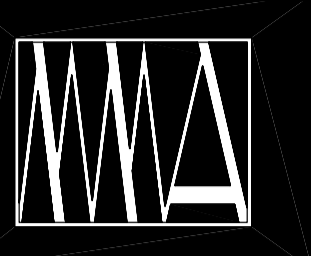
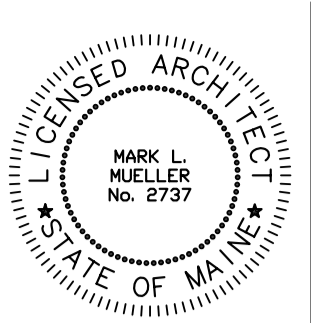


NOTES:  
 - USE GROUP: 5-2  
 - BUILDING CONSTRUCTION TYPE: 5B  
 - THE BUILDING IS NON-SPRINKLERED.  
 - METAL BUILDING MANUFACTURER:  
 STAR METAL BUILDINGS  
 OKLAHOMA CITY, OKLAHOMA

**LIFE SAFETY  
 LEGEND**

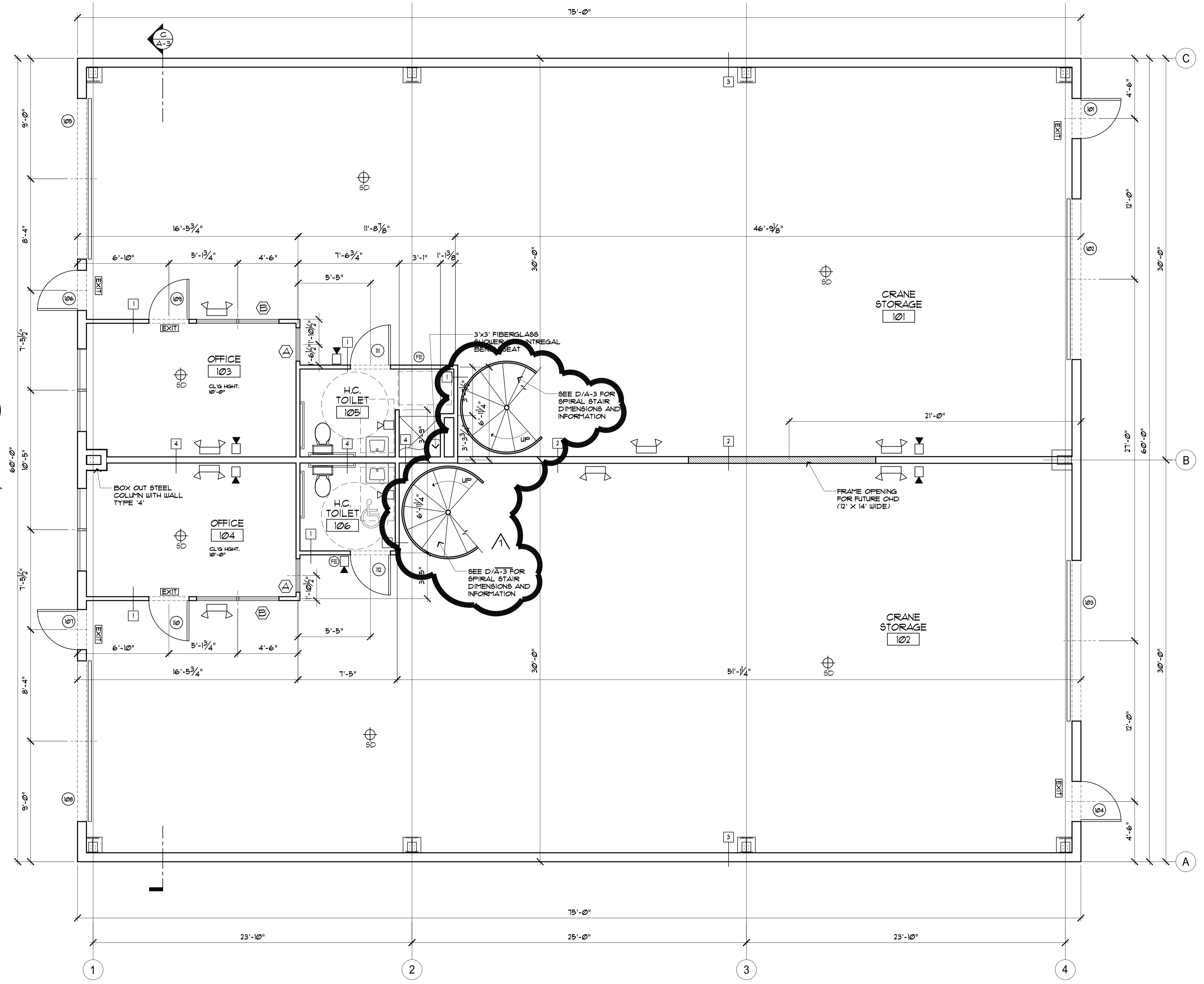
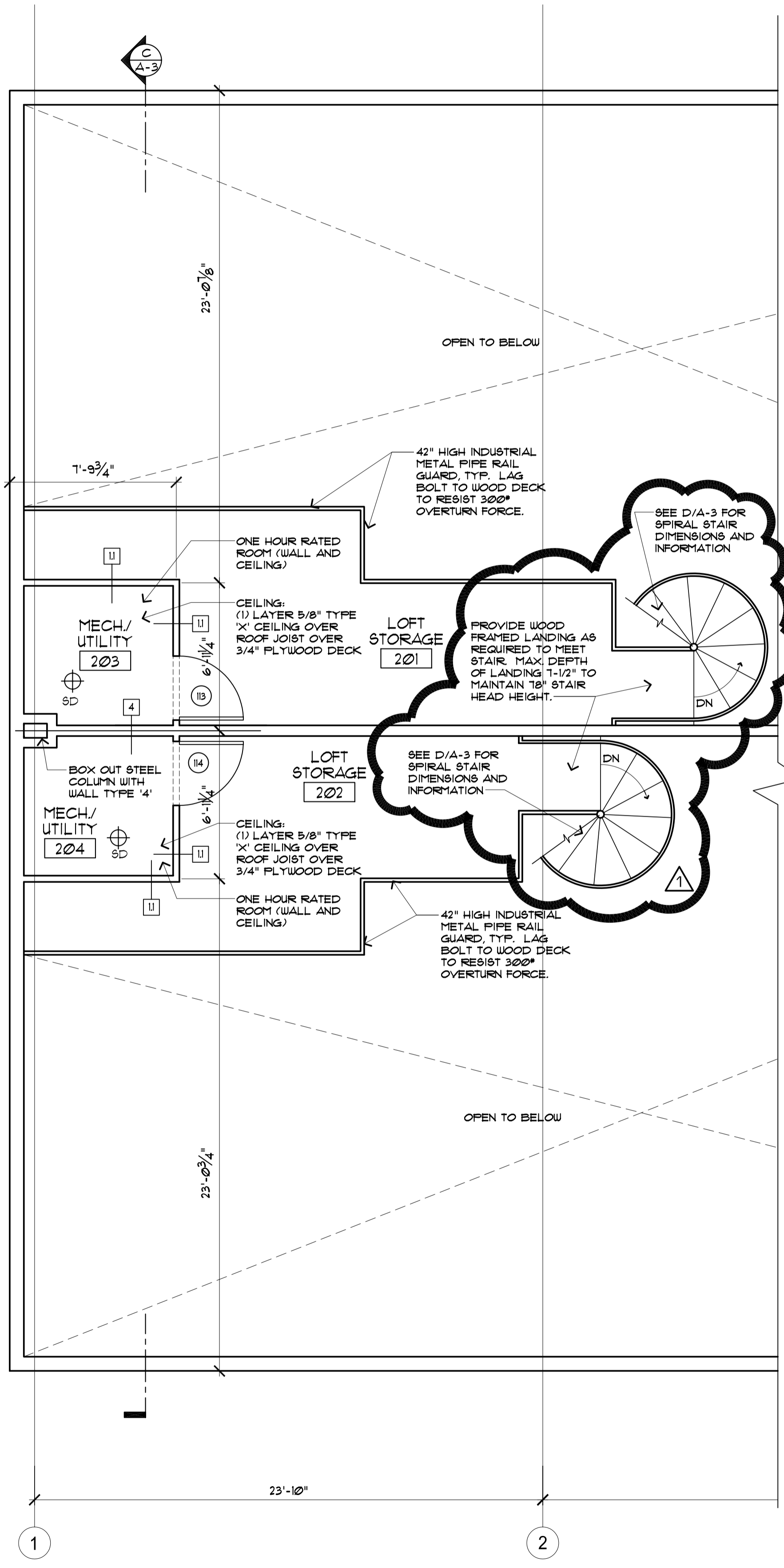
	EMERGENCY BACKUP LIGHT		HORN/STROBE
	EXIT LIGHT		STROBE
	SMOKE DETECTOR		FIRE EXTINGUISHER
	HEAT DETECTOR		



**MARK  
 MUELLER  
 ARCHITECTS  
 A.I.A.**  
 100 Commercial Street  
 Suite 205  
 Portland, Maine 04101  
 Phone: 207.774.9057  
 Fax: 207.773.3851  
 Email: mark@muelarchitects.com  
 Web: www.muellerarchitects.com

© COPYRIGHT  
 MARK MUELLER ARCHITECTS

**HARKIN / QUALITY CRANE**  
 31 BATES ROAD  
 PORTLAND, MAINE



**FLOOR PLANS**

REVISIONS  
 DATE: April 27, 2005  
 PROJECT: QUALITY CRANE  
 DRAWN BY: PCM  
 CHECK BY: MLM

