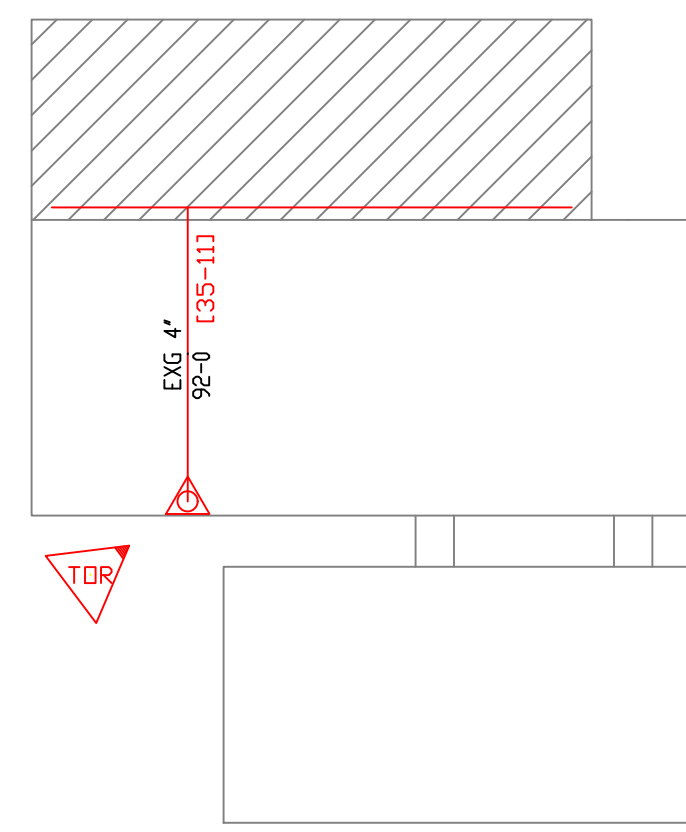
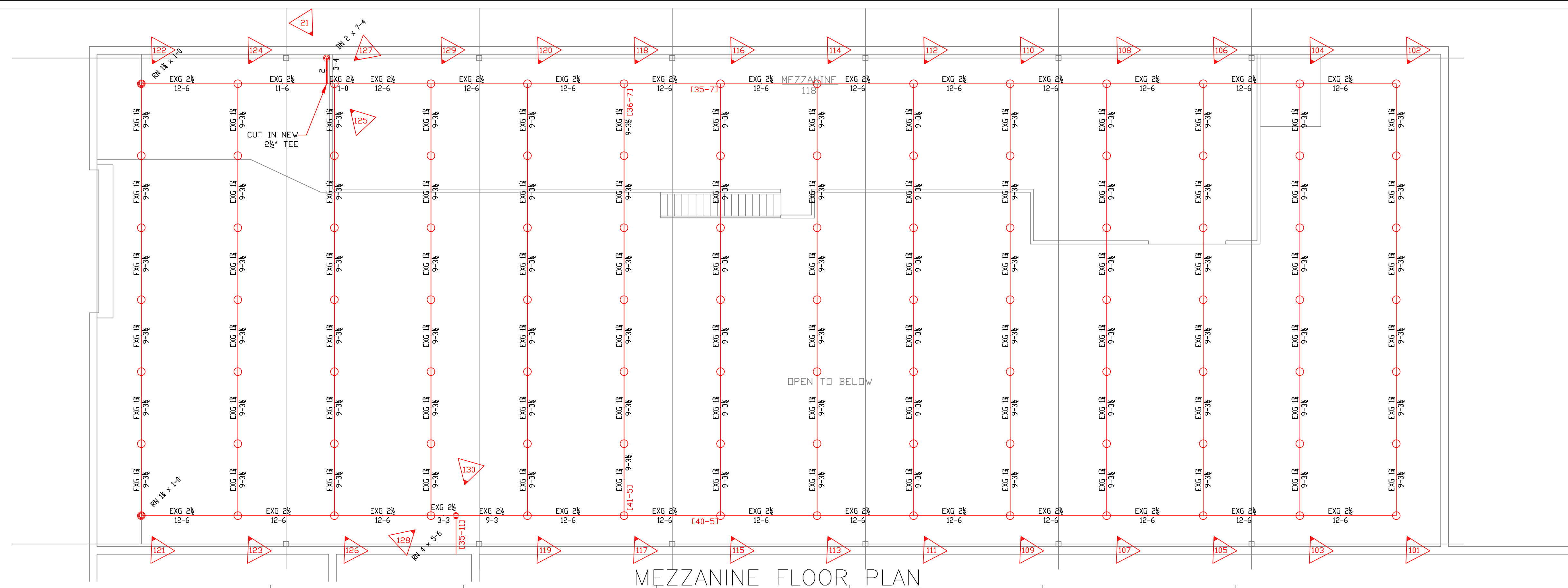


GENERAL NOTES:

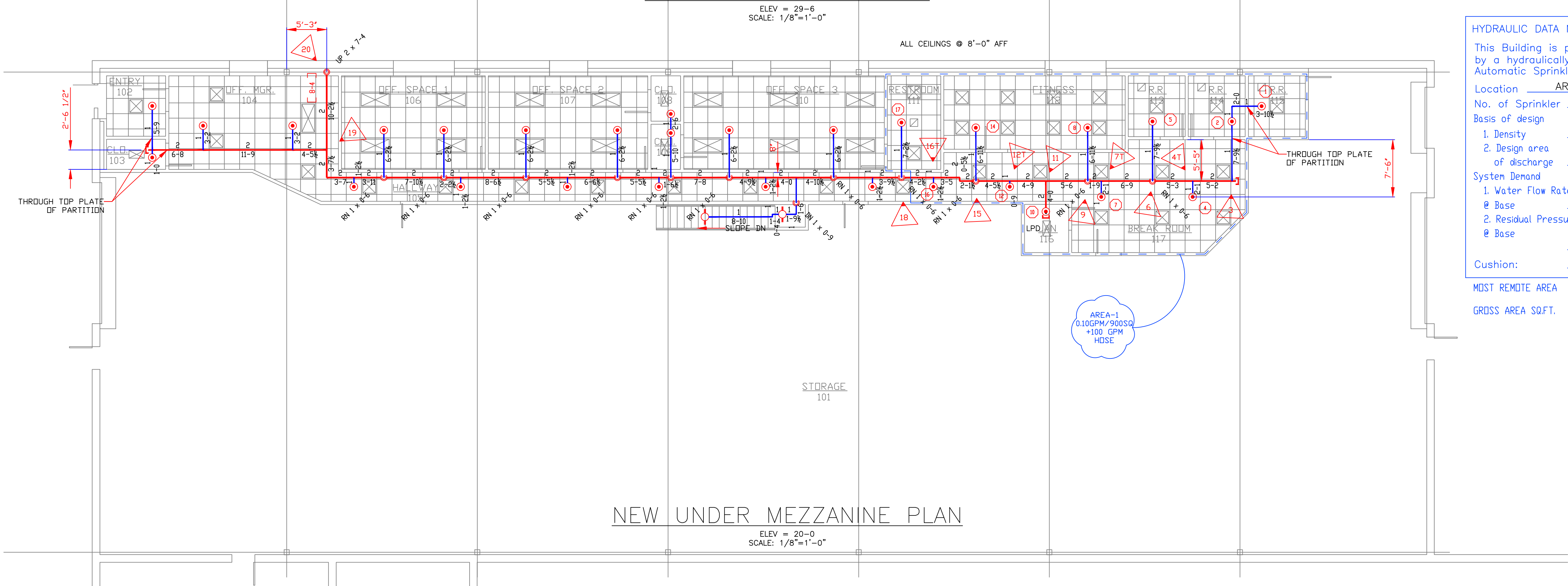
- IT IS THE BUILDING OWNERS RESPONSIBILITY TO PROVIDE ADEQUATE HEAT FOR ALL AREAS IN THE BUILDING PROTECTED BY WET SPRINKLER SYSTEMS AND FOR ALL WATER FILLED SUPPLY PIPES, VALVES AND SYSTEM RISERS IN ALL DRY PIPE SPRINKLER SYSTEMS.
- ALL NEW PIPING IS TO BE HYDROSTATICALLY TESTED AT NOT LESS THAN 200 PSI FOR 2 HOURS, OR AT 50 PSI IN EXCESS OF THE MAXIMUM PRESSURE, WHEN THE MAXIMUM PRESSURE TO BE MAINTAINED IS IN EXCESS OF 150 PSI. (PER NFPA 13)
- WHETHER OR NOT INDICATED ON DRAWINGS, THE FOLLOWING ITEMS ARE TO BE PROVIDED:
 - . SPARE HEAD CABINET WITH WRENCH (NFPA 13)
 - . PROVISIONS FOR FLUSHING CONNECTIONS AND DRAINING OF ALL PIPE.
 - . INSPECTORS TEST CONNECTION SHALL BE PROVIDED FOR EACH SYSTEM
 - A) FOR WET PIPE SYSTEMS SEE NFPA 13)
 - B) FOR DRY PIPE SYSTEMS SEE NFPA 13)
- . AIR PRESSURE SHALL BE MAINTAINED ON ALL DRY PIPE SYSTEMS BY AN APPROVED AUTOMATIC AIR COMPRESSOR OR PLANT AIR SYSTEM SPECIFICALLY APPROVED FOR AND CAPABLE OF AUTOMATICALLY MAINTAINING THE REQUIRED AIR PRESSURE.
- . WET PIPE SYSTEMS SHALL BE PROVIDED WITH A RELIEF VALVE NOT LESS THAN 1/2" IN SIZE. (NFPA 13).
- ALL PIPE 1" SHALL BE SCHEDULE 40 STEEL WITH MALLEABLE IRON FITTINGS.
- ALL PIPE 1 1/2" AND LARGER, SHALL BE SCHEDULE 10 STEEL, WITH GROOVED COUPLINGS AND VICTAULIC® MECHANICAL FITTINGS OR EQUIVALENT.
- ALL MECHANICAL TRADES ARE TO COORDINATE THEIR WORK WITH SPRINKLER WORK AS SHOWN ON THESE PLANS.
- ALL HANGERS AND LOCATIONS ARE TO BE IN ACCORDANCE WITH NFPA 13.
- ALL SPRINKLER HEADS IN SUSPENDED CEILING TILES ARE TO BE LOCATED IN AN AESTHETIC, SYMMETRICAL PATTERN WHENEVER POSSIBLE WITH THE HEADS NO CLOSER THAN 3" TO THE T-BAR.
- ALL PIPING IS TO BE PITCHED IN ACCORDANCE WITH NFPA 13.
- HYDRAULIC DATA REFERENCE POINTS: (25) (26)
- CENTER LINE OF PIPE ABOVE FINISH FLOOR 12'-0" BELOW DECK (12)
- PROTECTIVE CAPS ARE TO REMAIN ON THE SPRINKLER HEADS UNTIL AFTER CEILINGS ARE INSTALLED.
- WHERE SURFACE MOUNTED OBSTRUCTIONS EXIST DEEP ESCUTCHION SPRINKLER HEADS WILL BE INSTALLED.
- SCOPE OF WORK IS TO PROVIDE COMPLETE COVERAGE BELOW THE NEW MEZZANINE FROM THE EXISTING WET SPRINKLER SYSTEM AT THE ROOF AND IS LIMITED TO THE WORK SHOWN ON THESE DOCUMENTS.



KEY PLAN
SCALE: 1"=60'-0"

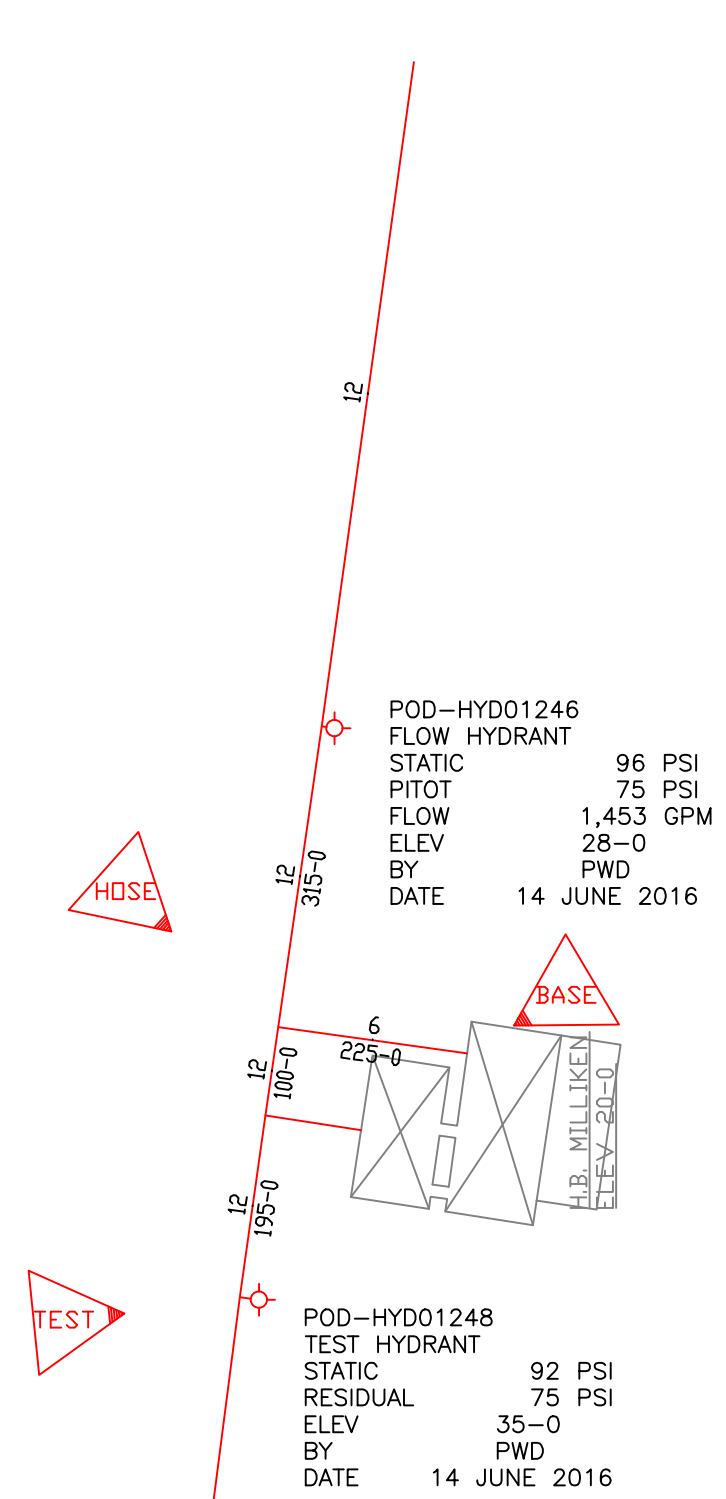


MEZZANINE FLOOR PLAN
ELEV = 29'-6"
SCALE: 1/8"=1'-0"

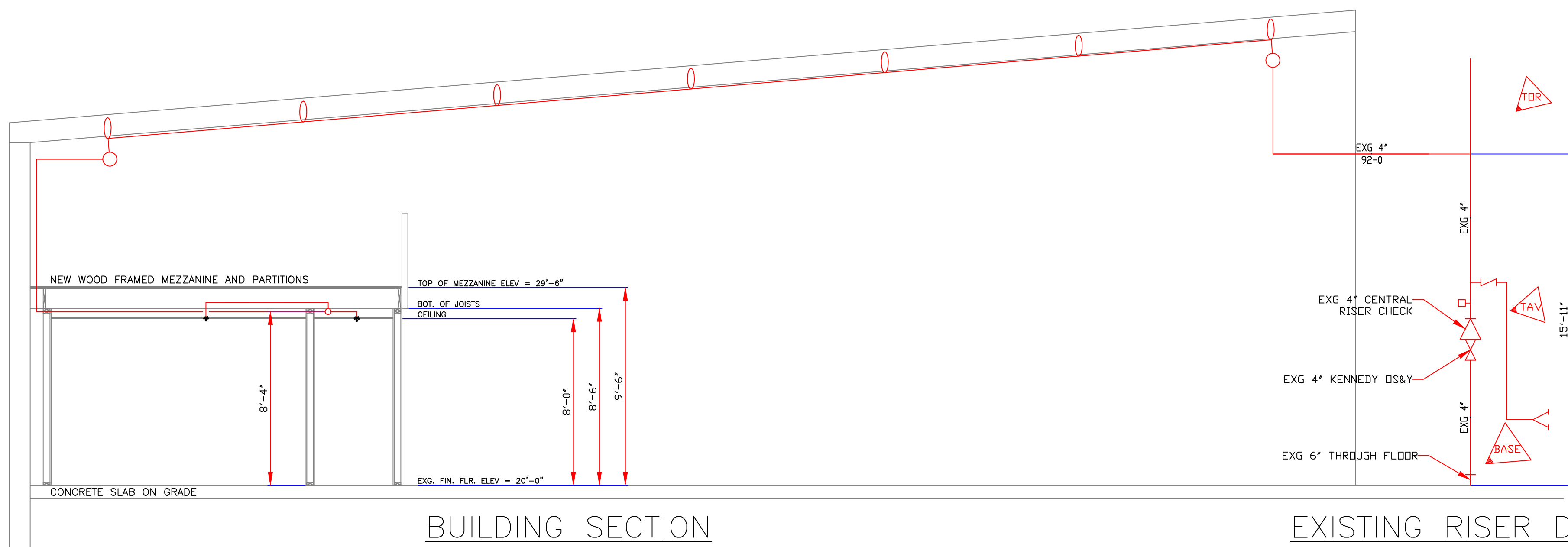


NEW UNDER MEZZANINE PLAN
ELEV = 20'-0"
SCALE: 1/8"=1'-0"

HYDRAULIC DATA NAMEPLATE	
This Building is protected by a hydraulically designed Automatic Sprinkler System	
Location	AREA-1
No. of Sprinkler	11
Basis of design	
1. Density	0.10 gpm/ft²
2. Design area of discharge	900 ft²
System Demand	
1. Water Flow Rate @ Base	226.89 gpm
2. Residual Pressure @ Base	83.083 psi
Cushion:	13.84 psi
MOST REMOTE AREA	
GROSS AREA SQ.FT.	2,600

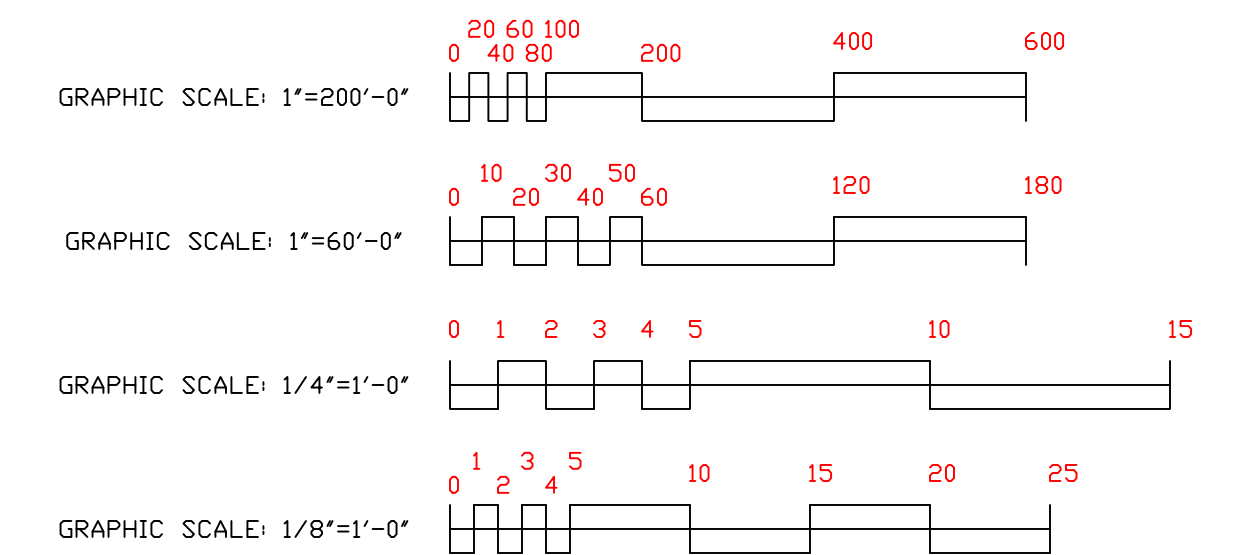


SITE PLAN
SCALE: 1"=200'-0"

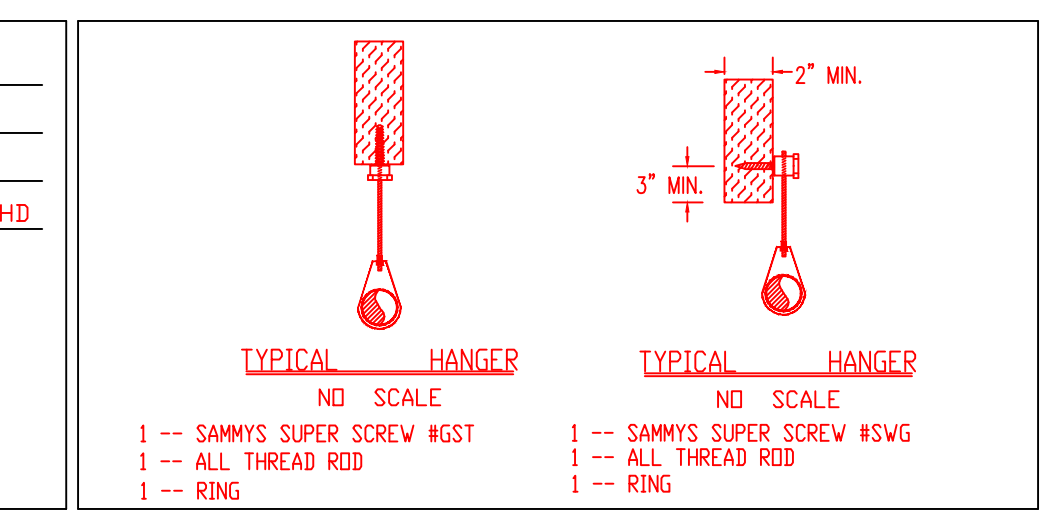


BUILDING SECTION
SCALE: 1/4"=1'-0"

EXISTING RISER DETAIL
SCALE: 1/4"=1'-0"



NORTH ←	1. Type of Hazard DRY / LIGHT 2. Deflector Distance _____
	3. Pipe Type Used 10/40 BLK 4. Sprinkler Area 2,930 SQ FT
	5. Type of Construction COMBUSTIBLE
	6. Maximum Spacing Allowed LIGHT=225 SQ FT/HD & DRD=130 SQ FT/HD
	7. PIPE SIZING METHOD: PIPE SCHEDULE <input type="checkbox"/> HYDRAULICALLY CALCULATED <input checked="" type="checkbox"/>
	8. ALL HANGERS AND LOCATIONS TO BE IN ACCORDANCE WITH NFPA PAMPHLET NO. 13
	9. HIGH DEGREE TEMPERATURE SPRINKLER HEADS TO BE INSTALLED IN ACCORDANCE WITH NFPA PAMPHLET NO. 13



HANGERS	
	AS SHOWN

ABBREVIATIONS	
B	Bottom of Beam
D	Bottom of Deck
P	Bottom of Pipe
N.A.C	Nipple and Cap Not in Contract
NC	Not to Scale
OS	Open Star Valve
PRV	Pressure Red Valve
RM	Roof Manifold
SP	Storage
TOB	Top of Beam
TOP	Top of Pipe
TOS	Top of Steel
UDN	Unless Otherwise Noted
CL	Centerline
NAL	No Automatic Sprinkler
OTA	Open to Above

CONTRACT RESPONSIBILITIES									
ITEM	FFC	OTHERS							
STREET CONN	●								
EXCAVATION	●								
FLUSHING	●								
WIRING	●								
PAINTING	●								
TAMPER SWITCHES	●								
FLOW SWITCHES	●								
STREET CONN	●								

SPRINKLER HEAD LEGEND											
#	SYMBOL	MAKE	MODEL	SIN	FINISH	TYPE	TEMP	NPT	ORIFICE	K-FACTOR	TOTAL
1		RELIABLE	F1FR56	RA1414	WHITE	RECESSED PLUNNET	155 F	1/2"	1/2"	5.6	29
2		RELIABLE	F1FR56	RA1425	WHITE	UPRIGHT	200 F	1/2"	1/2"	5.6	2

SUBMITTALS	
SENT TO	DATE RECEIVED
DATE SENT MM/DD/YY	
I S O	
F M	
L M	
I R I	
L A	
STATE FIRE	
LOCAL FIRE	
LOCAL WATER	
G. C.	

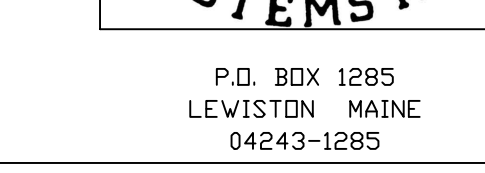
B.H. MILLIKEN TENANT FIT-UP
235 PRESUMPSCOT ST
PORTLAND, MAINE

FLOOR PLAN, NOTES AND DETAILS

CONTRACT WITH **OWNER**

SYSTEM TYPE	NO.	DATE	REVISIONS	DESCRIPTION
WET	<input type="checkbox"/>			
DRY	<input type="checkbox"/>			
DELUGE	<input type="checkbox"/>			
REACTION	<input type="checkbox"/>			
ML LIFE	<input type="checkbox"/>			

SCALE: AS NOTED
DRAWN BY: ARS
CHECKED BY: CDS
NICTET INT #78833
DATE: 5 JULY 2016
TOTAL SPRKS ON JOB: 11
SHEET#: FP-1
JOB#: 16-069



P.O. BOX 1285
LEWISTON, MAINE
04243-1285