

**CODE REVIEW SUMMARY**

APPLICANT: SETH KING  
144 FORE STREET, PORTLAND, ME 04101  
207-321-3854

PROJECT ARCHITECT: JANET HANSEN  
144 FORE STREET, PORTLAND, ME 04101  
207-321-3832

PROJECT DESCRIPTION: AN EXISTING STORAGE WAREHOUSE IS BEING CONVERTED TO A SELF-STORAGE RENTAL BUSINESS. A SMALL TWO STORY OFFICE AND BATHROOM WILL BE PARTIALLY DEMOLISHED TO MAKE ROOM FOR ADDITIONAL SELF-STORAGE UNITS.

FIRE: NFPA INCLUDING 101 LIFE SAFETY CODE, 2009 EDITION  
BUILDING: INTERNATIONAL BUILDING CODE, 2009 EDITION  
ACCESSIBILITY: ADA, ACCESSIBILITY GUIDELINES FOR BUILDINGS AND FACILITIES.  
PLUMBING: MAINE STATE PLUMBING CODE, 2009 EDITION  
ELECTRICAL: NATIONAL ELECTRICAL CODE, 2014 EDITION

EXISTING USE GROUP CLASSIFICATION(S) IBC: GROUP B  
EXISTING USE GROUP CLASSIFICATION(S) NFPA: GROUP BUSINESS

NEW USE GROUP CLASSIFICATION(S) IBC: GROUP B  
NEW USE GROUP CLASSIFICATION(S) NFPA: GROUP BUSINESS

SPECIFIC OCCUPANCY AREAS/  
HAZARDOUS AREA PROTECTION: IBC CHAPTER 3, TABLE 302.1.1  
NFPA 101 CHAPTER 38

TYPE OF CONSTRUCTION (EXISTING): IBC: CHAPTER 6, TABLE 601: NON-COMBUSTIBLE - TYPE IIB  
TYPE OF CONSTRUCTION (NEW): IBC: CHAPTER 6, TABLE 601: TYPE VA

HEIGHT/AREA LIMITATIONS: NO CHANGE IN HEIGHT OR AREA OR OCCUPANCY.

MINIMUM NUMBER OF EXITS REQUIRED  
PER FLOOR LEVEL: 2  
PER ROOM WITH >50 OCCUPANTS: 2

EGRESS CAPACITY: MINIMUM ALLOWABLE  
EXIT ACCESS CORRIDOR WIDTH: 44 IN. CLEAR  
DOOR WIDTH: 32 IN. CLEAR

ARRANGEMENT: MAXIMUM ALLOWABLE  
DEAD-END-CORRIDOR: 50 FT.  
COMMON PATH OF TRAVEL: 100 FT.  
TRAVEL DISTANCE TO EXIT: 300 FT.

EMERGENCY LIGHTING: EXISTING BATTERY BACK-UP FIXTURES WILL BE RELOCATED AND SUPPLEMENTED AS NECESSARY TO PROVIDE MINIMUM LIGHT LEVELS REQUIRED BY NFPA 101/7.9.2.

EXIT SIGNAGE: INTERNALLY ILLUMINATED EXIT SIGNS WITH BATTERY BACK-UP WILL BE RELOCATED AND SUPPLEMENTED AS NECESSARY IN RESPONSE TO THE REQUIREMENTS OF NFPA 101/7.10.

INTERIOR FINISH: IBC - CHAPTER 8, NFPA 101 - CHAPTERS 10 & 19  
WALL AND CEILING FINISHES: (IBC TABLE 803.5)  
VERTICAL EXITS & PASSAGEWAYS: NOT APPLICABLE  
EXIT ACCESS CORRIDORS: CLASS A OR B  
ROOMS & ENCLOSED SPACES: CLASS A, B OR C  
FLOOR FINISHES: NO REQUIREMENTS

DETECTION, ALARM,  
AND COMMUNICATIONS SYSTEMS: EXISTING ZONED FIRE ALARM SYSTEM.

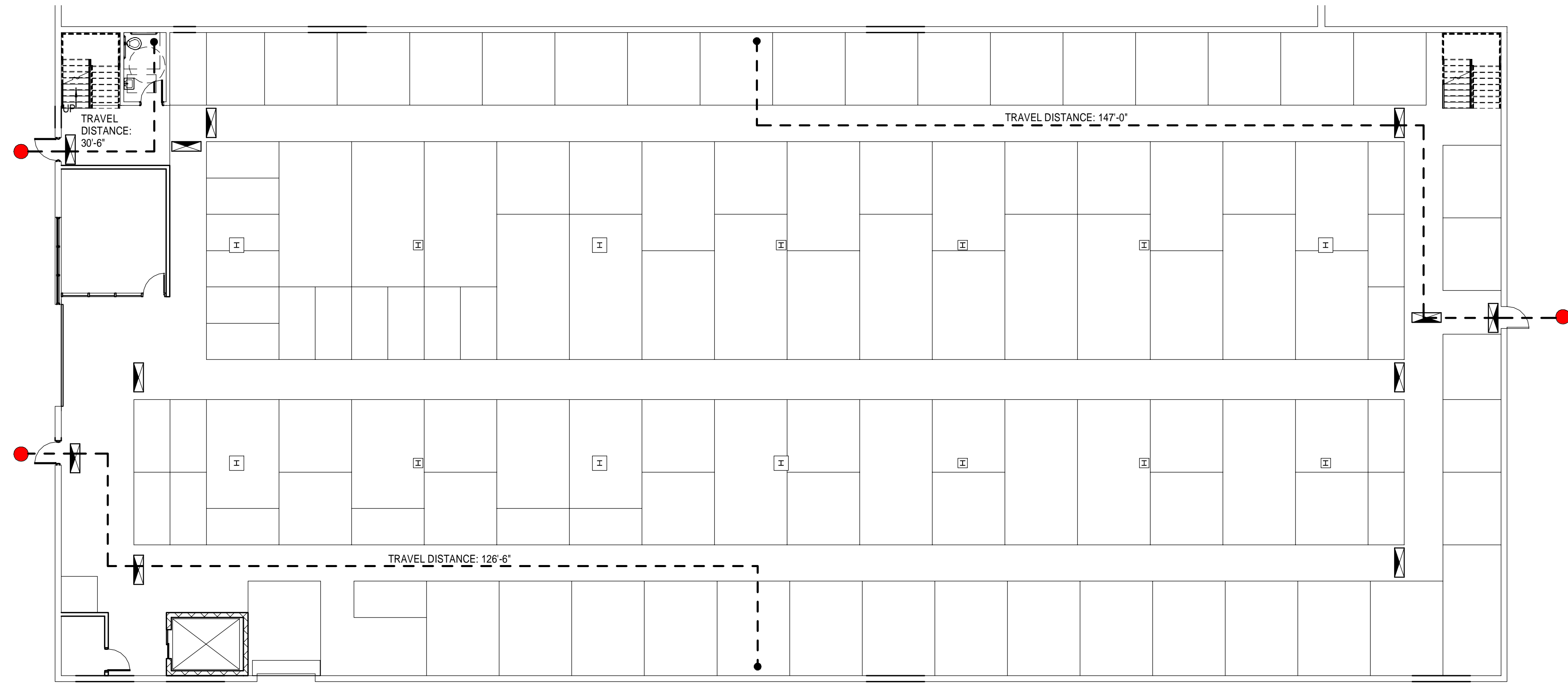
OCCUPANT: NOTIFICATION DEVICES CONFORMING WITH NFPA 9.6 WILL BE RELOCATED AND/OR SUPPLEMENTED AS REQUIRED BY THE PARTITION LAYOUT.

EXTINGUISHMENT REQUIREMENTS:  
AUTOMATIC FIRE SUPPRESSION: EXISTING WATER BASED SPRINKLER SYSTEM WILL HAVE HEAD LOCATIONS MODIFIED AS REQUIRED BY THE PARTITION LAYOUT.  
PORTABLE FIRE EXTINGUISHERS: EXISTING PORTABLE FIRE EXTINGUISHERS WILL REMAIN.

CORRIDORS: NO REQUIREMENTS.

**LIFE SAFETY LEGEND**

- EXIT DISCHARGE
- TRAVEL DISTANCE
- X EXIT SIGN



**A4** FIRST FLOOR - LIFE SAFETY  
3/32" = 1'-0"

144 Fore Street P.O. Box 618  
Portland, Maine 04104  
tel: (207) 772-3848  
fax: (207) 772-1070  
www.smrtinc.com

ARCHITECTURE  
ENGINEERING  
PLANNING  
INTERIORS  
ENERGY

**SMRT**

**LIFE STORAGE FIT-UP**  
235 PRESUMPSCOT STREET  
**UPDATED PERMIT SET**  
5-12-17  
CURRENT ISSUE STATUS:

REV	DESCRIPTION	DATE

GRAPHIC SCALE:  
0' 1'

SCALE: As indicated  
PROJECT MANAGER: JLH  
JC/DRAWN BY: SHK  
A/E OF RECORD: JLH  
PROJECT NO: 15105  
SMRT FILE: A-001-15105  
DATE:

SHEET TITLE:  
**CODE COMPLIANCE PLAN**

SHEET No.  
**A-001**