

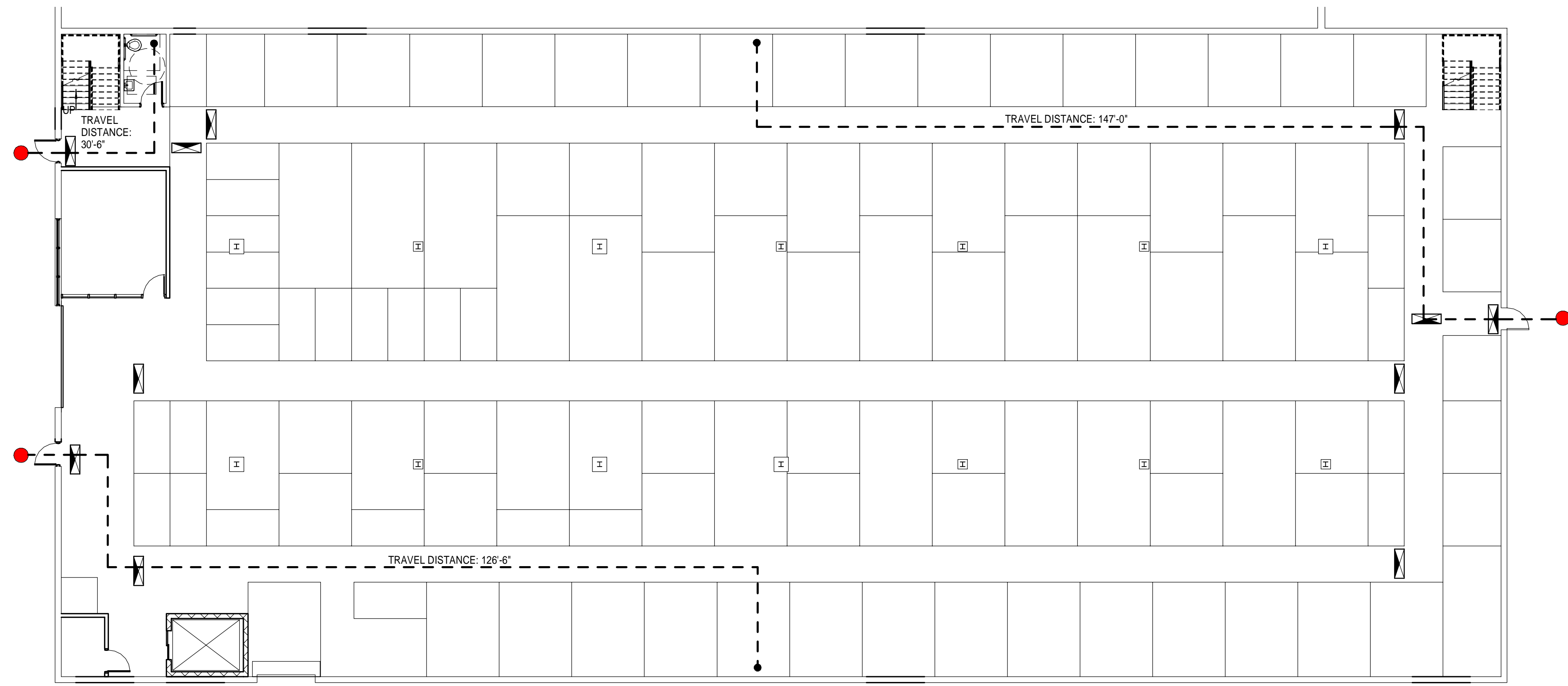
CODE REVIEW SUMMARY

APPLICANT: MICHAEL BARTON
 PROJECT ARCHITECT: JANET HANSEN
 144 FORE STREET, PORTLAND, ME 04101
 207-321-3805
 PROJECT DESCRIPTION: AN EXISTING STORAGE WAREHOUSE IS BEING CONVERTED TO A SELF-STORAGE RENTAL BUSINESS. A SMALL TWO STORY OFFICE AND BATHROOM WILL BE PARTIALLY DEMOLISHED TO MAKE ROOM FOR ADDITIONAL SELF-STORAGE UNITS.
 FIRE: NFPA INCLUDING 101 LIFE SAFETY CODE, 2009 EDITION
 BUILDING: INTERNATIONAL BUILDING CODE, 2009 EDITION
 ACCESSIBILITY: ADA, ACCESSIBILITY GUIDELINES FOR BUILDINGS AND FACILITIES.
 PLUMBING: MAINE STATE PLUMBING CODE, 2009 EDITION
 ELECTRICAL: NATIONAL ELECTRICAL CODE, 2014 EDITION
 EXISTING USE GROUP CLASSIFICATION(S) IBC: GROUP S-2 (LOW HAZARD STORAGE)
 EXISTING USE GROUP CLASSIFICATION(S) NFPA: GROUP STORAGE (CHAPTER 42)
 NEW USE GROUP CLASSIFICATION(S) IBC: GROUP S-1 (MODERATE HAZARD STORAGE)
 NEW USE GROUP CLASSIFICATION(S) NFPA: GROUP STORAGE (CHAPTER 42)
 TYPE OF CONSTRUCTION (EXISTING): IBC: CHAPTER 6, TABLE 601: NON-COMBUSTIBLE - TYPE IIB
 TYPE OF CONSTRUCTION (NEW): IBC: CHAPTER 6, TABLE 601: TYPE 11B
 HEIGHT/AREA LIMITATIONS: TABLE 503, 17,500 S.F. / 2 STORIES
 EXISTING S.F. = 17,424 S.F.
 MINIMUM NUMBER OF EXITS REQUIRED PER FLOOR LEVEL: 2
 PER ROOM WITH >50 OCCUPANTS: 2
 USE GROUP SEPARATION: LIFE STORAGE S-1 AND B.H. MILLIKEN MIXED USE NON-SEPARATED BUSINESS AND S-1 TABLE 508.4-NONE REQUIRED

EGRESS CAPACITY: MINIMUM ALLOWABLE
 EXIT ACCESS CORRIDOR WIDTH: 44 IN. CLEAR
 DOOR WIDTH: 32 IN. CLEAR
 ARRANGEMENT: MAXIMUM ALLOWABLE
 DEAD-END-CORRIDOR: 50 FT.
 COMMON PATH OF TRAVEL: 100 FT.
 TRAVEL DISTANCE TO EXIT: 300 FT.
 EMERGENCY LIGHTING: EXISTING BATTERY BACK-UP FIXTURES WILL BE RELOCATED AND SUPPLEMENTED AS NECESSARY TO PROVIDE MINIMUM LIGHT LEVELS REQUIRED BY NFPA 101/7.9.2.
 EXIT SIGNAGE: INTERNALLY ILLUMINATED EXIT SIGNS WITH BATTERY BACK-UP WILL BE RELOCATED AND SUPPLEMENTED AS NECESSARY IN RESPONSE TO THE REQUIREMENTS OF NFPA 101/7.10.
 INTERIOR FINISH: IBC - CHAPTER 8, NFPA 101 - CHAPTERS 10 & 19
 WALL AND CEILING FINISHES: (IBC TABLE 803.5)
 VERTICAL EXITS & PASSAGEWAYS: NOT APPLICABLE
 EXIT ACCESS CORRIDORS: CLASS A OR B
 ROOMS & ENCLOSED SPACES: CLASS A, B OR C
 FLOOR FINISHES: NO REQUIREMENTS
 DETECTION, ALARM, AND COMMUNICATIONS SYSTEMS: EXISTING ZONED FIRE ALARM SYSTEM.
 OCCUPANT: NOTIFICATION DEVICES CONFORMING WITH NFPA 9.6 WILL BE RELOCATED AND/OR SUPPLEMENTED AS REQUIRED BY THE PARTITION LAYOUT.
 EXTINGUISHMENT REQUIREMENTS: EXISTING NFPA 13 WATER BASED SPRINKLER SYSTEM WILL HAVE HEAD LOCATIONS
 AUTOMATIC FIRE SUPPRESSION: MODIFIED AS REQUIRED BY THE PARTITION LAYOUT.
 PORTABLE FIRE EXTINGUISHERS: EXISTING PORTABLE FIRE EXTINGUISHERS WILL REMAIN.
 CORRIDORS: NO REQUIREMENTS.

LIFE SAFETY LEGEND

- EXIT DISCHARGE
- TRAVEL DISTANCE
- EXIT SIGN



A4 FIRST FLOOR - LIFE SAFETY
 3/32" = 1'-0"

144 Fore Street, P.O. Box 618
 Portland, Maine 04104
 Tel: (207) 772-3846
 Fax: (207) 772-1070
 www.smrtinc.com

ARCHITECTURE
 ENGINEERING
 PLANNING
 INTERIORS
 ENERGY

SMART

LIFE STORAGE FIT-UP
 235 PRESUMPSCOT STREET
 UPDATED PERMIT SET
 5-12-17
 CURRENT ISSUE STATUS:

REV	DESCRIPTION	DATE

GRAPHIC SCALE:
 0' 1'

SCALE: As indicated
 PROJECT MANAGER: JLH
 JC/DRAWN BY: SHK
 A/E OF RECORD: JLH
 PROJECT NO: 15105
 SMRT FILE: A-001-15105
 DATE:

SHEET TITLE:
CODE COMPLIANCE PLAN

SHEET No.
A-001