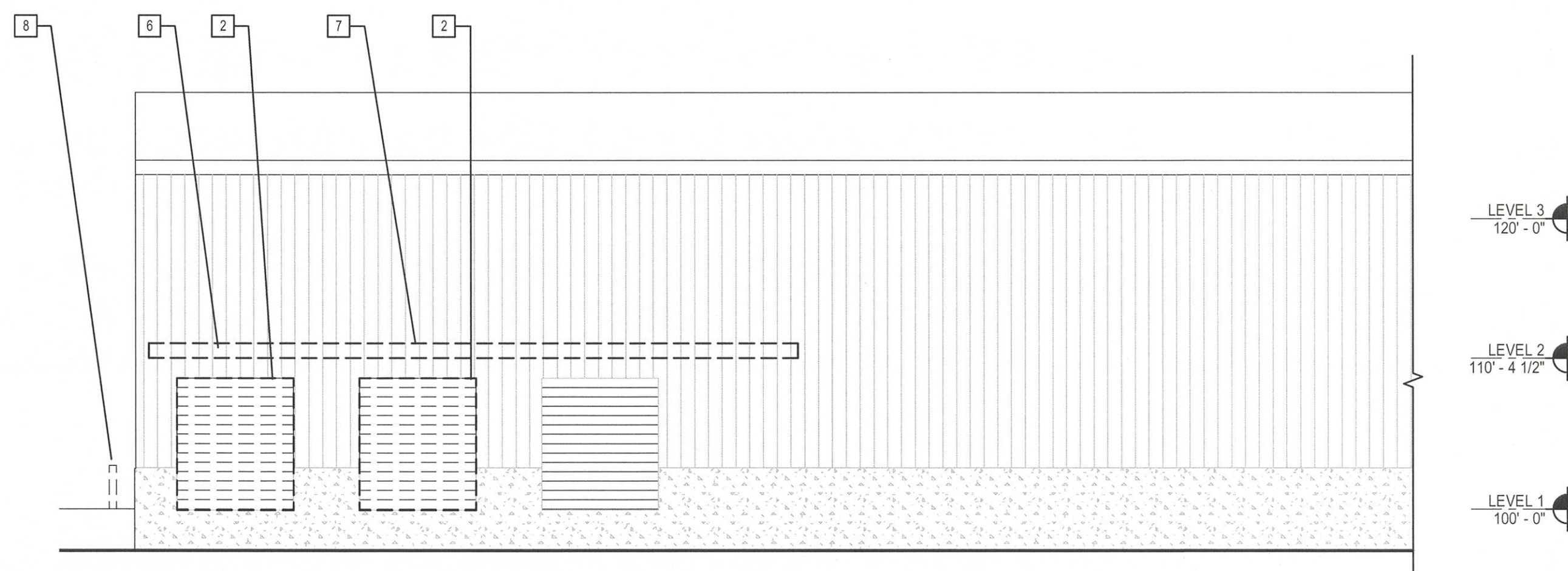


**F3** EXTERIOR ELEVATION  
1/8" = 1'-0"



**A7** EXTERIOR ELEVATION  
1/8" = 1'-0"

**GENERAL DEMOLITION NOTES:**

1. SEE G1001 FOR GENERAL PROJECT NOTES, SYMBOL, LEGEND, PARTITION LEGEND, AND ABBREVIATIONS
2. CONTRACTOR TO PROTECT ALL EXISTING SURFACES AND MATERIALS DURING DEMOLITION. ANY DAMAGE WILL BE CORRECTED OR REPLACED WITH NEW MATERIAL AND FINISH TO MATCH ADJACENT FINISH
3. IN AREAS WHERE EXISTING EQUIPMENT, FURNITURE, OR CEILINGS ARE IMPACTED BY DEMOLITION OR NEW WORK, CONTRACTOR SHALL REMOVE AND PROTECT DURING CONSTRUCTION AND REINSTALL/RETURN TO ORIGINAL LOCATION.

**DEMOLITION KEY NOTES:**

- 1 DEMOLISH EXISTING WALL COMPLETE
- 2 DEMOLISH EXISTING OH DOOR
- 3 DEMOLISH FLOOR AREA SHOWN HATCHED. COORDINATE WITH NEW CONSTRUCTION TO ENSURE THAT THE AREAS THAT ARE TO REMAIN CONTINUE TO BE APPROPRIATELY STRUCTURALLY SUPPORTED.
- 4 DEMOLISH EXISTING STEEL STAIRS
- 5 DEMOLISH FULL HEIGHT WALL COMPLETE, BUT DO NOT DISTURB OR REMOVE EITHER OF THE STEEL STRUCTURAL COLUMNS AND CONCRETE COLUMN BASES EMBEDDED IN THE WALL.
- 6 REMOVE EXISTING METAL AS REQUIRED TO PATCH AND MATCH FOR NEW INFILL
- 7 DEMOLISH EXISTING CANOPY.
- 8 DEMOLISH BOLLARDS AND PATCH PAVEMENT WHERE DISTURBED
- 9 CUT EXISTING SLAB AS REQUIRED FOR ELEVATOR PIT. EXCAVATE AND DISPOSE OF FILL MATERIAL.
- 10 DEMOLISH WALL TO EXTENT REQUIRED FOR INSTALLATION OF NEW WINDOW. SEE AE101.
- 11 DEMOLISH EXISTING DOOR IN PREPARATION FOR A NEW DOOR TO BE INSTALLED IN THE SAME LOCATION
- 12 NOT USED
- 13 DEMOLISH EXISTING DOOR
- 14 DEMOLISH EXISTING WINDOW FOR INFILL WITH NEW METAL SIDING WALL ASSEMBLY TO MATCH

144 Elm Street P.O. Box 618  
Portland, Maine 04104  
Tel: (207) 772-3846  
Fax: (207) 772-1070  
www.smartinc.com

ARCHITECTURE  
ENGINEERING  
PLANNING  
INTERIORS  
ENERGY

**SMART**



**LIFE STORAGE FIT-UP**  
238 PRESUMPSCOT STREET  
**UPDATED PERMIT SET**  
5-12-17  
CURRENT ISSUE STATUS:

REV	DESCRIPTION	DATE

GRAPHIC SCALE:  
0" 1"

SCALE: As indicated  
PROJECT MANAGER: JLH  
JC/DRAWN BY: SHK  
A/E OF RECORD: JLH  
PROJECT NO: 15105  
SMRT FILE: AD201-15105  
DATE:

SHEET TITLE:  
**DEMOLITION ELEVATIONS**

SHEET No.  
**AD201**