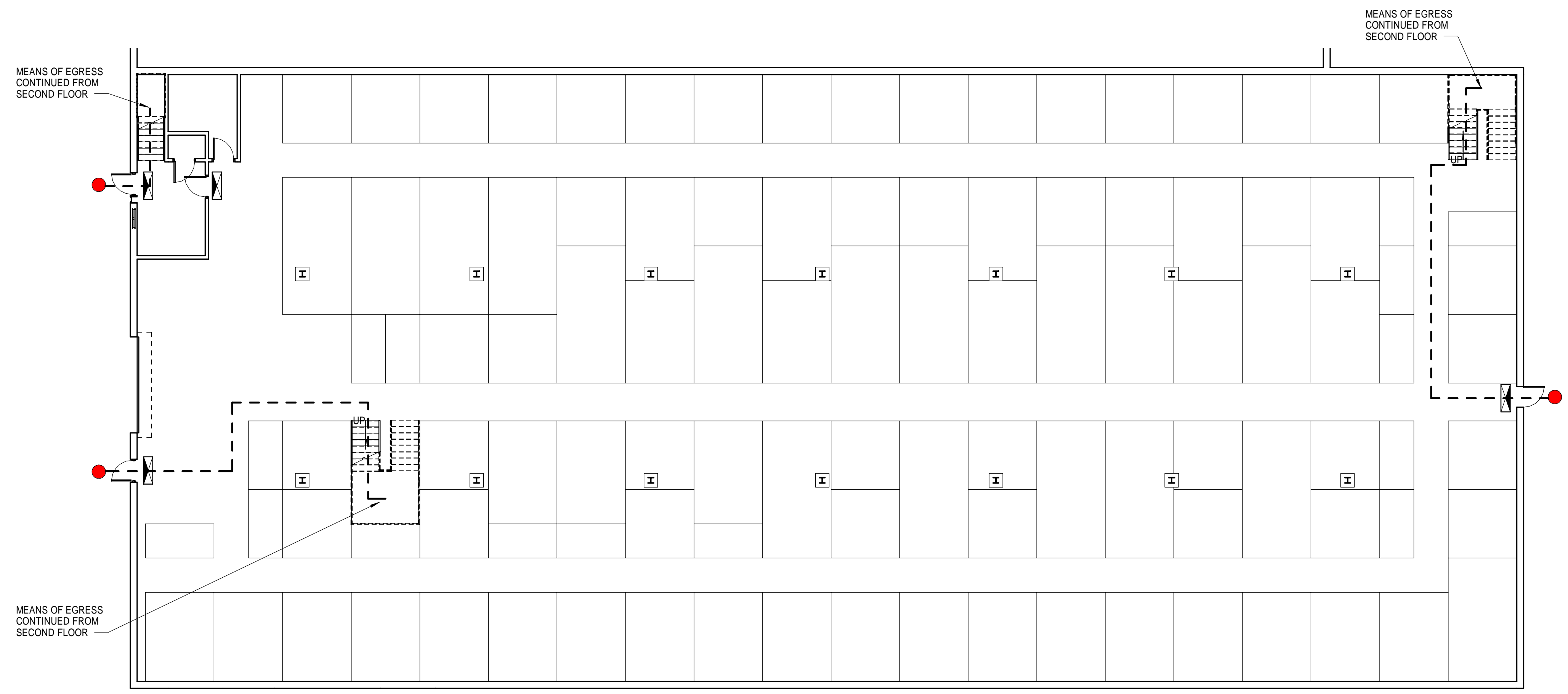


**G4 SECOND FLOOR - LIFE SAFETY**  
3/32" = 1'-0"



**A4 FIRST FLOOR - LIFE SAFETY (FOR SECOND FLOOR EGRESS)**  
3/32" = 1'-0"

**LIFE SAFETY LEGEND**

- EXIT DISCHARGE
- 172' TRAVEL DISTANCE
- EXIT SIGN

144 Elm Street P.O. Box 619  
Portland, Maine 04104  
Tel: (207) 772-3846  
Fax: (207) 772-1070  
www.smrtinc.com

ARCHITECTURE  
ENGINEERING  
PLANNING  
INTERIORS  
ENERGY

**SMRT**



**SELF-STORAGE TENANT FIT-UP**  
235 PRESUMPSCOT STREET  
**PERMIT SET**  
5-12-16  
CURRENT ISSUE STATUS:

REV	DESCRIPTION	DATE

GRAPHIC SCALE:  
0' 1'

SCALE: As indicated  
PROJECT MANAGER: JLH  
JC/DRAWN BY: SHK  
A/E OF RECORD: JLH  
PROJECT NO.: 15105  
SMRT FILE: A-002-15105  
DATE:

SHEET TITLE:  
**CODE COMPLIANCE PLAN**

SHEET No.  
**A-002**