

SELF STORAGE TENANT FIT-UP

ABBREVIATIONS:

| | | | |
|--------|-------------------------------------------|-------|-------------------------------------|
| AB | ANCHOR BOLT | L | ANGLE / LENGTH |
| A/C | AIR CONDITIONING | LF | LEFT |
| ACCU | AIR CONDITIONING CONDENSER UNIT | LINO | SHEET LINOLEUM |
| ACPLAS | ACOUSTICAL PLASTER | LL | LIVE LOAD |
| ACT | ACOUSTIC CEILING TILE | LLH | LONG LEG HORIZONTAL |
| AFF | ABOVE FINISH FLOOR | LLV | LONG LEG VERTICAL |
| AGG | AGGREGATE | LP | LIGHTING PANEL / LIQUIFIED PROPANE |
| ALT | ALTERNATE | | |
| AP | ACCESS PANEL | MAX | MAXIMUM |
| APROX | APPROXIMATE | MB | MARKER BOARD |
| ARCH | ARCHITECTURAL | MDO | MEDIUM DENSITY OVERLAY |
| | | MECH | MECHANICAL |
| BCX | BOTTOM CORD EXTENSION | MFR | MANUFACTURER |
| BD | BOARD | MIN | MINIMUM |
| BIT | BITUMINOUS | MISC | MISCELLANEOUS |
| BLDG | BUILDING | MO | MASONRY OPENING |
| BLP | BORROWED LIGHT PANEL | MR | MOISTURE-RESISTANT |
| BO | BOTTOM OF | MUA | MAKE-UP AIR |
| BOF | BOTTOM OF FOOTING | | |
| BOS | BOTTOM OF STEEL | N | NOSING |
| BOT | BOTTOM | NCB | NEW CATCH BASIN |
| BRDG | BRIDGING | NDMH | NEW DRAIN MANHOLE |
| BRG | BEARING | NFM | NEW FORCE MAIN |
| BS | BOTH SIDES | NIC | NOT IN CONTRACT |
| BSE | BRICK SHELF ELEVATION | NS | NEAR SIDE |
| | | NSD | NEW STORM DRAIN LINE |
| C | CHANNEL | NSS | NEW SANITARY SEWER LINE |
| CB | CATCH BASIN / CHALKBOARD | NTS | NOT TO SCALE |
| CEM BD | CEMENTITIOUS BACKER BOARD | NW | NEW WATER LINE |
| CFM | CUBIC FEET PER MINUTE | | |
| CIP | CAST IN PLACE | OC | ON CENTER |
| CJ | CONTROL JOINT / CONSTRUCTION JOINT | OF | OUTSIDE FACE |
| CL | CENTER LINE | OH | OVERHEAD |
| CLL | CONTRACT LIMIT LINE | | |
| CLR | CLEAR | PA | PUBLIC ADDRESS |
| CMU | CONCRETE MASONRY UNIT | PAF | POWER-ACTUATED FASTENER |
| COL | COLUMN | PDU | POOL DEHUMIDIFICATION UNIT |
| CONC | CONCRETE | PL | PLATE / PROPERTY LINE |
| CONT | CONTINUOUS | PLAM | PLASTIC LAMINATE |
| CT | CERAMIC TILE | PLF | POUNDS PER LINEAR FOOT |
| CUH | CABINET UNIT HEATER | PP | POWER PANEL |
| | | PSF | POUNDS PER SQUARE FOOT |
| D | DIAMETER | PSI | POUNDS PER SQUARE INCH |
| DBL | DOUBLE | PT | PRESSURE-TREATED |
| DF | DRINKING FOUNTAIN | PVC | POLYVINYL CHLORIDE |
| DL | DEAD LOAD | PVMT | PAVEMENT |
| DR | DISPLAY RAIL | | |
| DTL | DETAIL | R | RISER / RADIUS |
| DW | DISHWASHER | RB | RESILIENT BASE |
| DWG | DRAWING | RD | ROOF DRAIN |
| | | REINF | REINFORCED |
| EA | EACH | REQD | REQUIRED |
| EF | EXHAUST FAN / EACH FACE | RT | RIGHT |
| EJ | EXPANSION JOINT | RO | ROUGH OPENING |
| EL | ELEVATION | ROW | RIGHT OF WAY |
| ELEC | ELECTRICAL | RR | RUB-RAIL |
| EOP | EDGE OF PAVEMENT | RTU | ROOF TOP UNIT (HVAC) |
| EPDM | ETHYLENE PROPYLENE DIENE MONOMER | | |
| EQ | EQUAL | SACT | SUSPENDED ACOUSTIC TILE CEILING |
| EW | EACH WAY | SC | SOLID CORE |
| EWC | ELECTRIC WATER COOLER | SF | SQUARE FOOT / SUPPLY FAN |
| EXIST | EXISTING | SFRM | SPRAYED FIRE-RESISTIVE MATERIAL |
| EXP | EXPANSION | SHT | SHEET |
| EXT | EXTERIOR | SIM | SIMILAR |
| | | SK | SHEAR KEY |
| FB | FLAT BAR | SN | SANITARY NAPKIN (DISPENSER) |
| FBO | FURNISHED BY OTHERS | SP | SPECIAL |
| FCO | FLOOR CLEA-OUT | SS | STAINLESS STEEL |
| FD | FLOOR DRAIN | STA | STATION |
| FE | FIRE EXTINGUISHER | STL | STEEL |
| FEC | FIRE EXTINGUISHER CABINET | STRUC | STRUCTURAL |
| FF | FINISH FLOOR / FAR FACE | | |
| FFE | FINISH FLOOR ELEVATION | T | TREAD |
| FO | FRAMED OPENING | TB | TACKBOARD |
| FRP | FIBER REINFORCED PLASTIC | T&B | TOP AND BOTTOM |
| FS | FAR SIDE | TBM | TEMPORARY BENCHMARK |
| FTG | FOOTING | TCE | TOP CHORD EXTENSION |
| | | TJ | TIE JOIST |
| GA | GAUGE | TO | TOP OF |
| GALV | GALVANIZED | TOC | TOP OF CONCRETE |
| GB | GRAB BAR | TOP | TOP OF FOOTING |
| GC | GENERAL CONTRACTOR | TOM | TOP OF MASONRY |
| GDT | GYPNUM DROP-IN TILE | TOP | TOP OF PIER |
| GV | GRAVITY VENT | TOS | TOP OF STEEL |
| GWB | GYPNUM WALL BOARD | TOW | TOP OF WALL |
| | | TP | TOILET PAPER (DISPENSER) / TEST PIT |
| H | HORIZONTAL | TS | TUBE STEEL |
| HC | HANDICAPPED / HOLLOW CORE | TYP | TYPICAL |
| HORIZ | HORIZONTAL | | |
| HM | HOLLOW METAL | UH | UNIT HEATER |
| HRU | HEAT RECOVERY UNIT | UNO | UNLESS NOTED OTHERWISE |
| H&V | HEATING AND VENTILATING | | |
| HVAC | HEATING, VENTILATING AND AIR CONDITIONING | V | VENT PIPE / VERTICAL |
| | | VB | VAPOR BARRIER |
| I | INCLUDED ANGLE | VCT | VINYL COMPOSITION TILE |
| ID | INSIDE DIAMETER | VERT | VERTICAL |
| IF | INSIDE FACE | VP | VISION PANEL |
| IJ | ISOLATION JOINT | VTR | VENT THROUGH THE ROOF |
| IMP | IMPACT RESISTANT | | |
| INS | INSULATED | W | WITH |
| INV | INVERT | WC | WATER CLOSET |
| | | WD | WOOD |
| JS | JOINT SUBSTITUTE | WF | WIDE FLANGE |
| | | WH | WATER HEATER |
| K | KIPS | W/O | WITH OUT |
| | | WP | WORKING POINT |
| | | WS | WEB STIFFENER |
| | | WWF | WELDED WIRE FABRIC |

SYMBOL LEGEND:

| | |
|--|-------------------------------|
| | BUILDING SECTION |
| | WALL SECTION |
| | DETAIL |
| | EXTERIOR ELEVATION |
| | INTERIOR ELEVATION |
| | LEVEL LINE |
| | KEY NOTE |
| | EQUIPMENT/ACCESSORY TAG |
| | WINDOW TAG |
| | PARTITION TAG |
| | DOOR TAG |
| | ROOM NAME |
| | ROOM NUMBER |
| | COLUMN BUBBLE AND CENTER LINE |
| | BACKER ROD AND SEALANT |
| | WALL MOUNTED EXIT SIGN |

DRAWING LIST:

| | |
|----------------------|---------------------------------------------------|
| GENERAL | |
| GI001 | COVER SHEET, LEGEND AND ABBREVIATIONS, WALL TYPES |
| ARCHITECTURAL | |
| A-001 | FIRST FLOOR CODE COMPLIANCE PLAN |
| A-002 | SECOND FLOOR CODE COMPLIANCE PLAN |
| AD101 | FIRST FLOOR DEMOLITION PLAN |
| AD102 | SECOND FLOOR DEMOLITION PLAN |
| AD121 | FIRST FLOOR DEMO RCP |
| AD122 | SECOND FLOOR DEMO RCP |
| AD201 | EXTERIOR DEMOLITION ELEVATION |
| AE101 | FIRST FLOOR PLAN |
| AE102 | SECOND FLOOR PLAN |
| AE121 | FIRST FLOOR RCP |
| AE122 | SECOND FLOOR RCP |
| AE201 | EXTERIOR ELEVATIONS |
| AE501 | DETAILS |

LOCATION MAP:

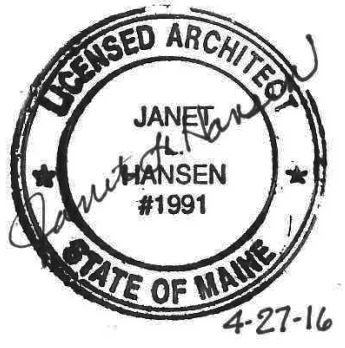


GENERAL NOTES:

- FIELD VERIFY ALL DIMENSIONS AND LAYOUT PRIOR TO PROCEEDING WITH WORK. NOTIFY ARCHITECT IN WRITING OF ANY DISCREPANCIES OR INCONSISTENCIES. FAILURE TO REPORT ANY DISCREPANCIES WITHIN THESE CONSTRUCTION DOCUMENTS TO THE ARCHITECT WILL NOT BE GROUNDS FOR ADDITIONAL COST OR CHANGE ORDERS.
- CONTRACTOR SHALL BE RESPONSIBLE FOR PROVIDING ALL MATERIALS (UNLESS NOTED OTHERWISE) AND WORKMANSHIP IN ACCORDANCE WITH FEDERAL, STATE, CITY, AND LOCAL BUILDING CODES AND THEIR REQUIREMENTS.
- CONTRACTOR AND ALL TRADES SHALL NOTE REQUIREMENTS OF "GENERAL NOTES" ON ALL SHEETS.
- EACH TRADE TO PROVIDE SMOKE OR FIRE SEALANT AT PENETRATIONS AS REQUIRED FOR WALL TYPE (UNLESS NOTED OTHERWISE). ALL SEALANT, FIRE STOPPING AND SMOKE STOPPING ASSEMBLIES SHALL BE U.L. RATED.
- REFER TO ALL CONSTRUCTION DOCUMENTS FOR REQUIREMENTS WHICH MAY AFFECT THE WORK IN ANOTHER AREA AND/OR DISCIPLINE AND COORDINATE.
- PROVIDE BLOCKING IN WALLS AS NECESSARY WHERE CASEWORK, FURNITURE, SHELVES, HANDRAILS, AND/OR OTHER MISC. EQUIPMENT IS LOCATED.
- DO NOT SCALE CONSTRUCTION DOCUMENTS.
- PROVIDE MEANS "FURNISH AND INSTALL".

144 Elm Street, P.O. Box 618
Portland, Maine 04104
Tel: (207) 772-2866
Fax: (207) 772-1070
www.smartinc.com

ARCHITECTURE
ENGINEERING
PLANNING
INTERIORS
ENERGY



SELF-STORAGE TENANT FIT-UP

PERMIT SET
4-27-16

235 PRESUMPSCOTT STREET
CURRENT ISSUE STATUS

| REV | DESCRIPTION | DATE |
|-----|-------------|------|
| | | |
| | | |
| | | |
| | | |
| | | |
| | | |
| | | |
| | | |
| | | |

GRAPHIC SCALE:

0' 1'

SCALE: As indicated

PROJECT MANAGER: JLH

JC/DRAWN BY: SHK

A/E OF RECORD: JLH

PROJECT NO: 15105

SMART FILE: GI001-15105

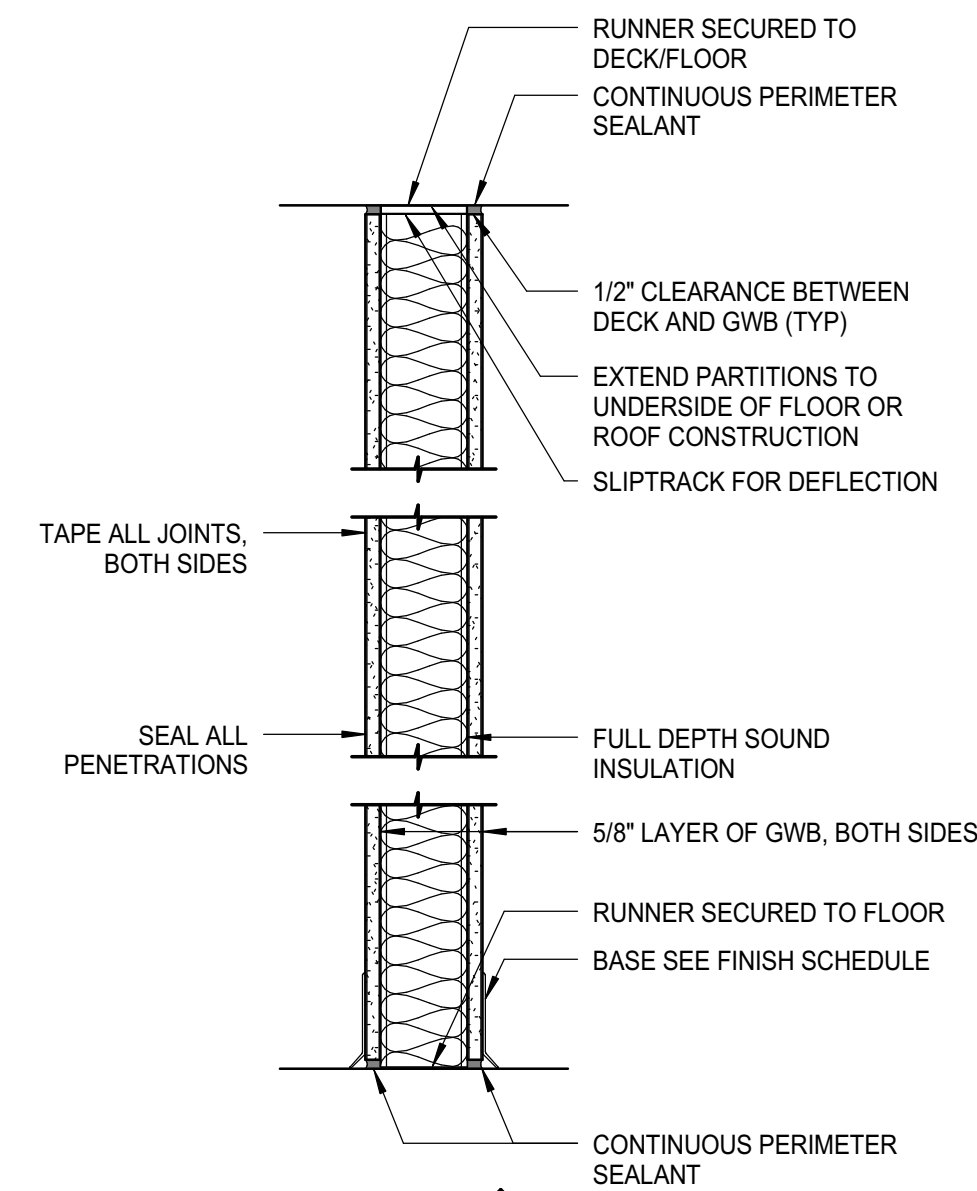
DATE:

SHEET TITLE:
COVER SHEET,
LEGEND AND
ABBREVIATIONS

SHEET No.

GI001

©COPYRIGHT 2014 SMART INC.



TYPE S3.a 1 HR FIRE RATED

(STC 45) ONE LAYER 5/8" GWB EACH SIDE OF 3/8" METAL STUDS.

A8 PARTITION TYPES
1 1/2" = 1'-0"