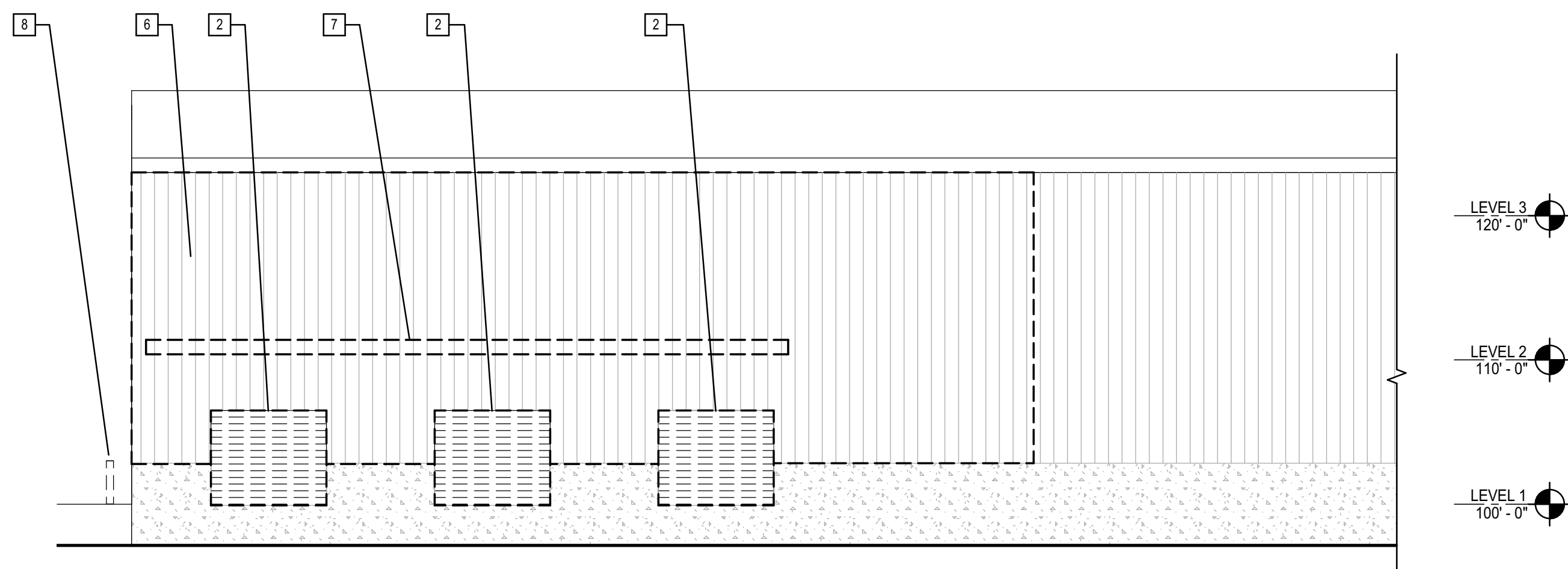


**F3** EXTERIOR ELEVATION  
1/8" = 1'-0"



**A7** EXTERIOR ELEVATION  
1/8" = 1'-0"

**GENERAL DEMOLITION NOTES:**

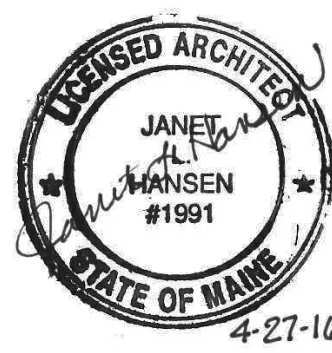
1. SEE G1001 FOR GENERAL PROJECT NOTES, SYMBOL LEGEND, PARTITION LEGEND, AND ABBREVIATIONS.
2. CONTRACTOR TO PROTECT ALL EXISTING SURFACES AND MATERIALS DURING DEMOLITION. ANY DAMAGE WILL BE CORRECTED OR REPLACED WITH NEW MATERIAL AND FINISH TO MATCH ADJACENT FINISH.
3. IN AREAS WHERE EXISTING EQUIPMENT, FURNITURE, OR CEILINGS ARE IMPACTED BY DEMOLITION OR NEW WORK, CONTRACTOR SHALL REMOVE AND PROTECT DURING CONSTRUCTION AND REINSTALL/RETURN TO ORIGINAL LOCATION.

**DEMOLITION KEY NOTES:**

- 1 DEMOLISH EXISTING WALL COMPLETE
- 2 DEMOLISH EXISTING OH DOOR
- 3 DEMOLISH FLOOR AREA SHOWN HATCHED. COORDINATE WITH NEW CONSTRUCTION TO ENSURE THAT THE AREAS THAT ARE TO REMAIN CONTINUE TO BE APPROPRIATELY STRUCTURALLY SUPPORTED.
- 4 DEMOLISH EXISTING STEEL STAIRS
- 5 DEMOLISH FULL HEIGHT WALL COMPLETE, BUT DO NOT DISTURB OR REMOVE EITHER OF THE STEEL STRUCTURAL COLUMNS AND CONCRETE COLUMN BASES EMBEDDED IN THE WALL.
- 6 REMOVE EXISTING METAL SIDING IN PREPERATION FOR REPLACEMENT IN-KIND.
- 7 DEMOLISH EXISTING CANOPY.
- 8 DEMOLISH BOLLARDS AND PATCH PAVEMENT WHERE DISTURBED
- 9 CUT EXISTING SLAB AS REQUIRED FOR LIFT AND NEW LIFT SUPPORT SLAB. SEE AE501.
- 10 DEMOLISH WALL TO EXTENT REQUIRED FOR INSTALLATION OF NEW WINDOW. SEE AE102.
- 11 DEMOLISH EXISTING DOOR AND ADJACENT WALL AND FOUNDATION WALL AS REQUIRED FOR A NEW DOOR TO BE INSTALLED IN THE SAME LOCATION
- 12 DEMOLISH DOWNLIGHT
- 13 DEMOLISH EXISTING WINDOW IN PREPERATION FOR NEW WINDOW IN THE SAME LOCATION
- 14 DEMOLISH EXISTING DOOR IN PREPERATION FOR A NEW DOOR TO BE INSTALLED IN THE SAME LOCATION
- 15 DEMOLISH EXISTING WALL TO THE EXTENT REQUIRED FOR THE INSTALLTION OF A NEW WINDOW. RE: AE101.

144 E. Spruce St. Box 618  
Portland, Maine 04104  
Tel: (207) 772-3868  
Fax: (207) 772-1070  
www.smartinc.com

ARCHITECTURE  
ENGINEERING  
PLANNING  
INTERIORS  
ENERGY



SELF-STORAGE TENANT FIT-UP

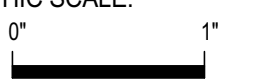
235 PRESUMPSCOT STREET

PERMIT SET  
4-27-16

CURRENT ISSUE STATUS

REV	DESCRIPTION	DATE

GRAPHIC SCALE:



SCALE: As indicated  
PROJECT MANAGER: JLH  
JC/DRAWN BY: SHK  
A/E OF RECORD: JLH  
PROJECT NO.: 15105  
SMART FILE: AD201-15105  
DATE:

SHEET TITLE:  
**DEMOLITION ELEVATIONS**

SHEET No.  
**AD201**

©Copyright 2014 SMART INC.