

CODE REVIEW SUMMARY

APPLICANT: SETH KING
144 FORE STREET, PORTLAND, ME 04101
207-321-3854

PROJECT ARCHITECT: ANDY TYNER
144 FORE STREET, PORTLAND, ME 04101
207-321-3832

PROJECT DESCRIPTION: RENOVATIONS OF AN EXISTING BUSINESS OCCUPANCY SPACE TO ACCOMMODATE A NAPA AUTOPARTS TENTANT FIT-UP. WORK INCLUDES DEMOLITION OF OFFICE SPACES; THE ENTIRETY OF THE SECOND FLOOR AND THE MAJORITY OF THE FIRST FLOOR. THE RESULTING SINGLE STORY SPACE WILL BE FILLED WITH TENANT PROVIDED EQUIPMENT AND FURNITURE.

FIRE: NFPA INCLUDING 101 LIFE SAFETY CODE, 2009 EDITION
BUILDING: INTERNATIONAL BUILDING CODE, 2009 EDITION
ACCESSIBILITY: ADA, ACCESSIBILITY GUIDELINES FOR BUILDINGS AND FACILITIES.
PLUMBING: MAINE STATE PLUMBING CODE, 2009 EDITION
ELECTRICAL: NATIONAL ELECTRICAL CODE, 2014 EDITION

EXISTING USE GROUP CLASSIFICATION(S) IBC: GROUP B
EXISTING USE GROUP CLASSIFICATION(S) NFPA: GROUP BUSINESS

NEW USE GROUP CLASSIFICATION(S) IBC: GROUP B
NEW USE GROUP CLASSIFICATION(S) NFPA: GROUP BUSINESS

SPECIFIC OCCUPANCY AREAS/
HAZARDOUS AREA PROTECTION: IBC CHAPTER 3, TABLE 302.1.1
NFPA 101 CHAPTER 38

TYPE OF CONSTRUCTION (EXISTING): IBC: CHAPTER 6, TABLE 601: NON-COMBUSTABLE - TYPE IIB
TYPE OF CONSTRUCTION (NEW): IBC: CHAPTER 6, TABLE 601: TYPE VA

HEIGHT/AREA LIMITATIONS: NO CHANGE IN HEIGHT OR AREA OR OCCUPANCY.

MINIMUM NUMBER OF EXITS REQUIRED
PER FLOOR LEVEL: 2
PER ROOM WITH >50 OCCUPANTS: 2

EGRESS CAPACITY: MINIMUM ALLOWABLE
EXIT ACCESS CORRIDOR WIDTH: 44 IN. CLEAR
DOOR WIDTH: 32 IN. CLEAR

ARRANGEMENT: MAXIMUM ALLOWABLE
DEAD-END-CORRIDOR: 50 FT.
COMMON PATH OF TRAVEL: 100 FT.
TRAVEL DISTANCE TO EXIT: 300 FT.

EMERGENCY LIGHTING: EXISTING BATTERY BACK-UP FIXTURES WILL BE RELOCATED AND SUPPLEMENTED AS NECESSARY TO PROVIDE MINIMUM LIGHT LEVELS REQUIRED BY NFPA 101/7.9.2.

EXIT SIGNAGE: INTERNALLY ILLUMINATED EXIT SIGNS WITH BATTERY BACK-UP WILL BE RELOCATED AND SUPPLEMENTED AS NECESSARY IN RESPONSE TO THE REQUIREMENTS OF NFPA 101/7.10.

INTERIOR FINISH: IBC - CHAPTER 8, NFPA 101 - CHAPTERS 10 & 19
WALL AND CEILING FINISHES: (IBC TABLE 803.5)
VERTICAL EXITS & PASSAGEWAYS: NOT APPLICABLE
EXIT ACCESS CORRIDORS: CLASS A OR B
ROOMS & ENCLOSED SPACES: CLASS A, B OR C
FLOOR FINISHES: NO REQUIREMENTS

DETECTION, ALARM, AND COMMUNICATIONS SYSTEMS: EXISTING ZONED FIRE ALARM SYSTEM.

OCCUPANT: NOTIFICATION DEVICES CONFORMING WITH NFPA 9.6 WILL BE RELOCATED AND/OR SUPPLEMENTED AS REQUIRED BY THE PARTITION LAYOUT.

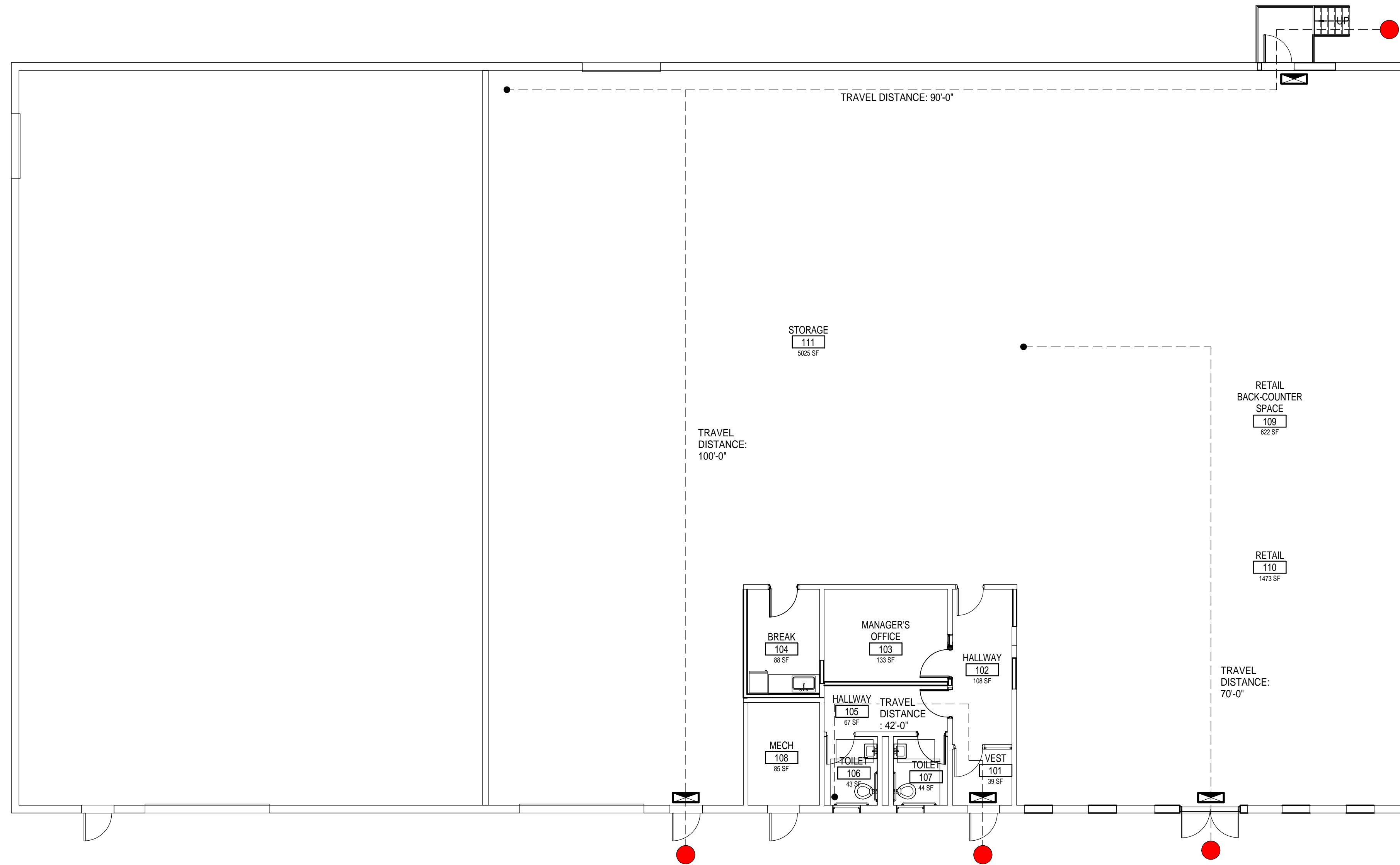
EXTINGUISHMENT REQUIREMENTS: EXISTING WATER BASED SPRINKLER SYSTEM WILL HAVE HEAD LOCATIONS MODIFIED AS REQUIRED BY THE PARTITION LAYOUT.
AUTOMATIC FIRE SUPPRESSION: EXISTING PORTABLE FIRE EXTINGUISHERS WILL REMAIN.

PORTABLE FIRE EXTINGUISHERS: EXISTING PORTABLE FIRE EXTINGUISHERS WILL REMAIN.

CORRIDORS: NO REQUIREMENTS.

LIFE SAFETY LEGEND

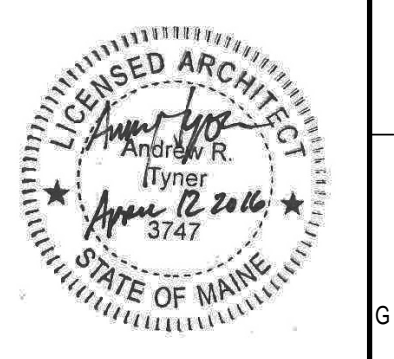
- EXIT DISCHARGE
- 172' TRAVEL DISTANCE
- EXIT SIGN



144 Fore Street P.O. Box 618
Portland, Maine 04104
tel. (207) 772-3846
fax. (207) 772-1070
www.smrtinc.com

ARCHITECTURE
ENGINEERING
PLANNING
INTERIORS
ENERGY

SMRTI



NAPA AUTOPARTS TENANT FIT-UP
235 PRESUMPSCOT ST. PORTLAND, MAINE
PERMIT SET
4-12-16
CURRENT ISSUE STATUS:

REV	DESCRIPTION	DATE

GRAPHIC SCALE:
0' 1'

SCALE: As indicated
PROJECT MANAGER: JLH
JC/DRAWN BY: SHK
A/E OF RECORD: JLH
PROJECT NO.: 15105
SMRT FILE: A-001-15105
DATE:

SHEET TITLE:
CODE COMPLIANCE

SHEET No.
A-001
©COPYRIGHT 2014 SMRT INC

A1 CODE COMPLIANCE PLAN
1/8" = 1'-0"