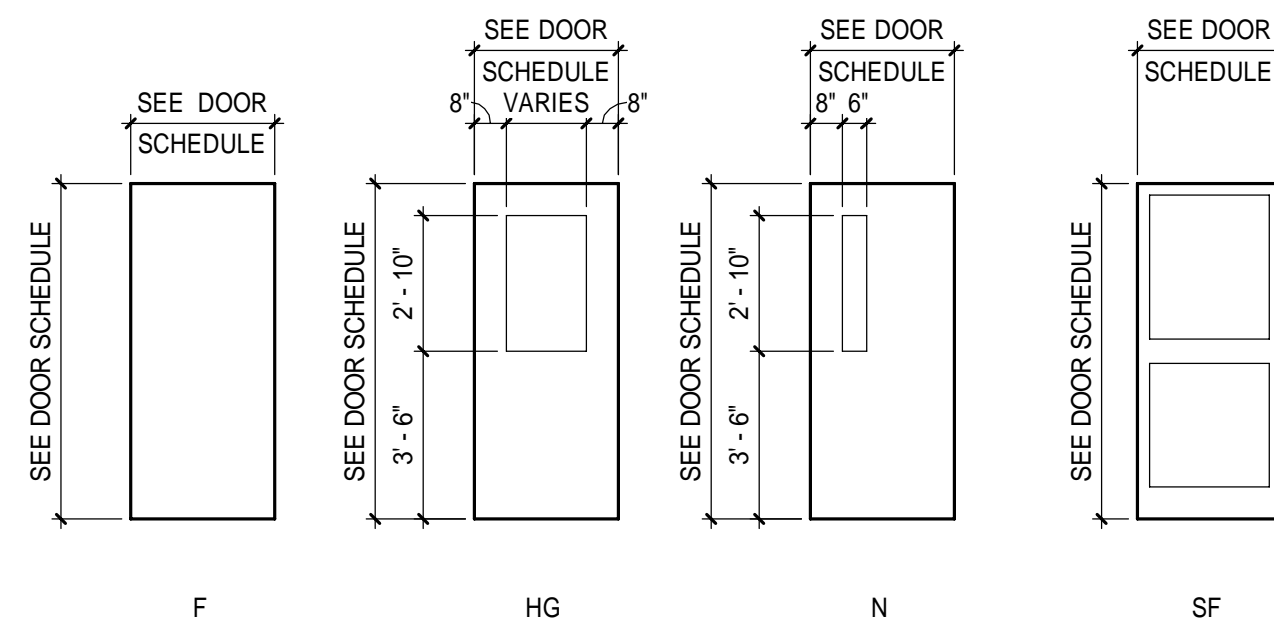
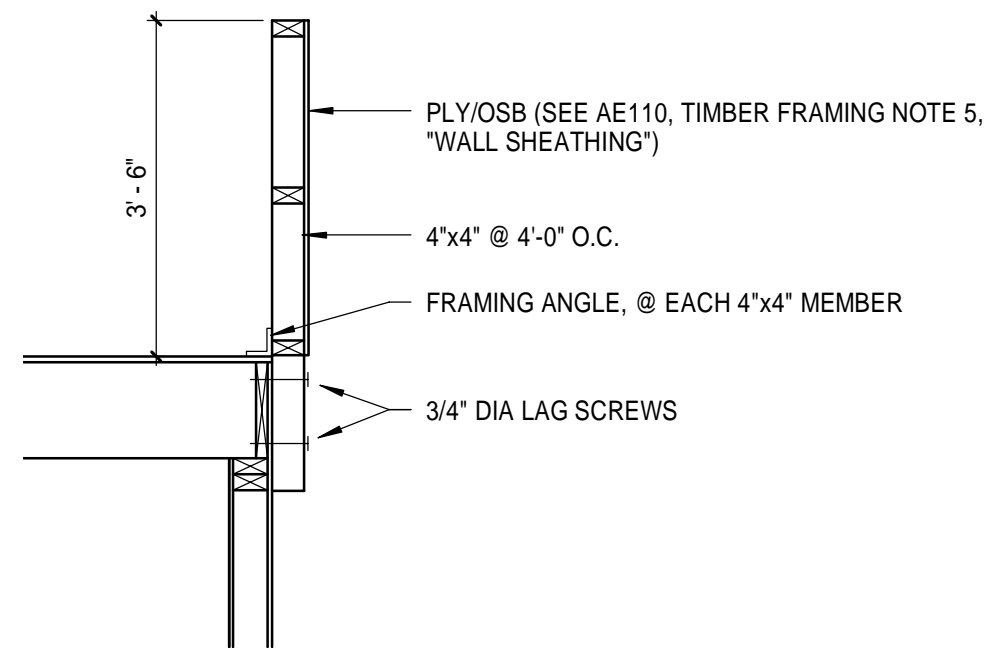


D1 BUILDING SECTION @ EXTERIOR WALL
1/2" = 1'-0"

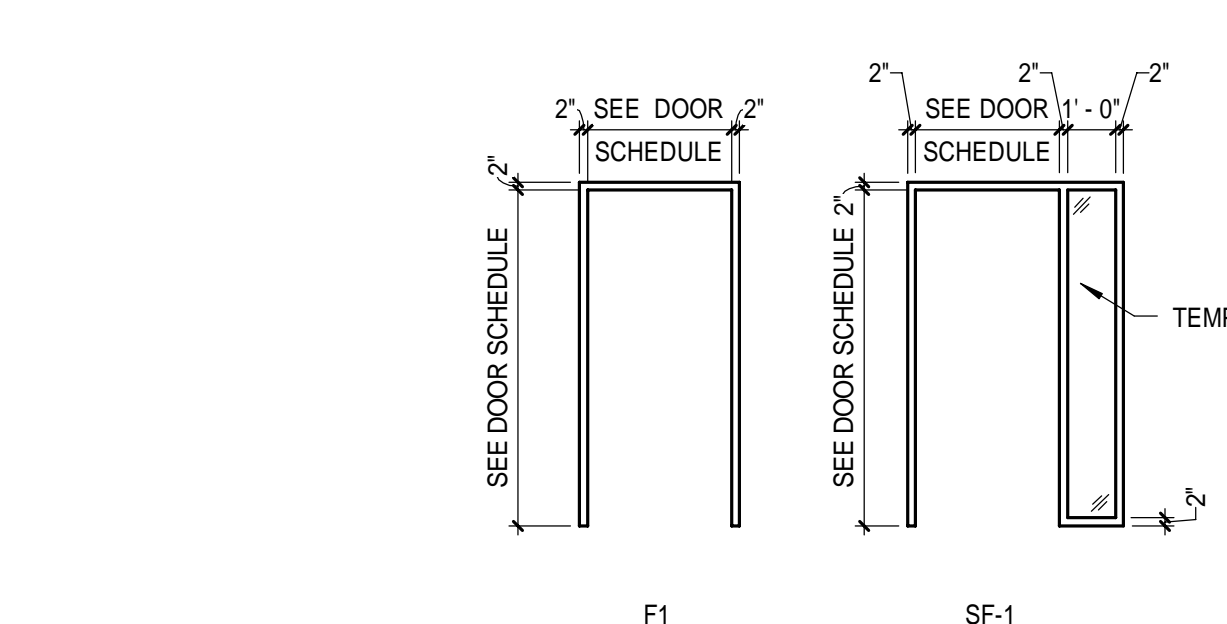


G5 DOOR LEAF TYPES
1/4" = 1'-0"

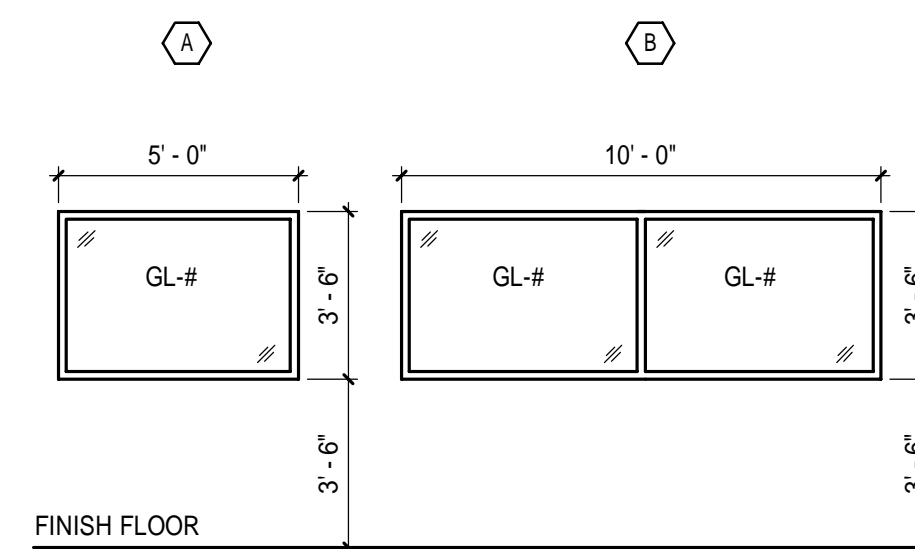


D5 MEZZANINE RAILING SECTION DETAIL
1/2" = 1'-0"

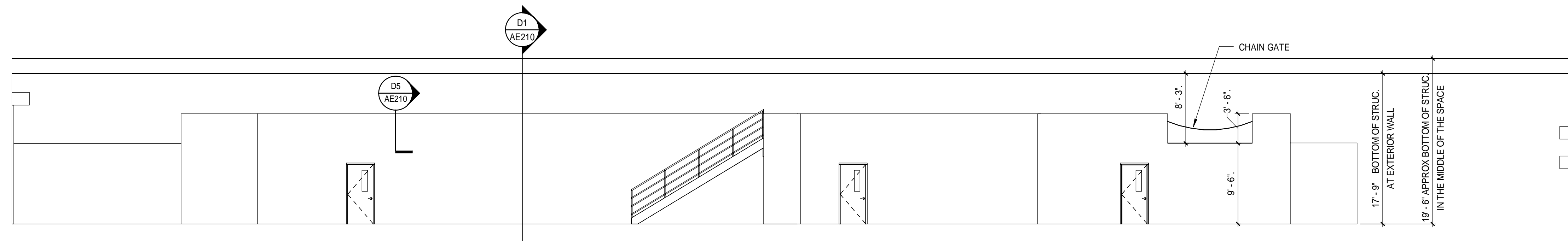
DOOR #	DOOR			ELEV	GLAZ	FRAME	
	WIDTH	HEIGHT	THICK			MAT'L	ELEV
102	3'-0"	6'-9 1/2"	0'-2"	SF	TEMP INSULATED		SF-1
102a	3'-0"	6'-8"	0'-2"	WD	HG	HM	F1
103	3'-0"	6'-8"	0'-2"	WD	-	HM	F1
105	3'-0"	7'-0"	0'-1 3/4"	HM	N	HM	F1
105a	3'-0"	7'-0"	0'-1 3/4"	HM	N	HM	F1
106	3'-0"	6'-8"	0'-2"	WD	N	HM	F1
107	3'-0"	6'-8"	0'-2"	WD	N	HM	F1
108	3'-0"	6'-8"	0'-2"	WD	-	HM	F1
109	3'-0"	6'-8"	0'-2"	WD	-	HM	F1
110	3'-0"	6'-8"	0'-2"	WD	N	HM	F1
111	3'-0"	6'-8"	0'-2"	WD	-	HM	F1
112	3'-0"	6'-8"	0'-2"	WD	N	HM	F1
113	3'-0"	6'-8"	0'-2"	WD	-	HM	F1
114	3'-0"	6'-8"	0'-2"	WD	-	HM	F1
115	3'-0"	6'-8"	0'-2"	WD	-	HM	F1
116	3'-0"	6'-8"	0'-2"	WD	-	HM	F1
117	3'-0"	7'-0"	0'-1 3/4"	HM	N	HM	F1



G9 DOOR FRAME TYPES
1/4" = 1'-0"



D9 WINDOW TYPES
1/4" = 1'-0"



A1 INTERIOR ELEVATION
1/8" = 1'-0"

DOOR AND FRAME SCHEDULE

DOOR NOTES:

- ALL SWINGING DOORS TO BE 1 3/4" THICK UNLESS NOTED OTHERWISE.
- ALL DOORS SHALL BE 3/4" UNDERCUT (TYPICAL) EXCEPT WHEN THERE IS A BOTTOM FRAME/THRESHOLD OR SPECIFICALLY NOTED OTHERWISE.
- ALL DOORS WITH BOTTOM FRAMES OR SILL THRESHOLDS SHALL HAVE MANUFACTURERS RECOMMENDED STANDARD UNDERCUT. GLAZING NOTED ON DOOR SCHEDULE IS FOR THE DOOR AND BORROWED LIGHT IN THE FRAME TYPICAL.
- SEE SPECIFICATIONS FOR GLAZING TYPES AND INFORMATION.
- GLAZING TO BE FREE OF STAMPS, MARKINGS, ETC. UNLESS REQUIRED BY CODE TO IDENTIFY A RATING.
- GLAZING STOPS ON BORROWED LIGHTS SHALL BE LOCATED ON THE ROOM SIDE OF FRAME. BUTT JOINT ALL GLAZING STOP TIGHT TO FRAME FOR A CLEAN, FINISHED APPEARANCE. CAULK PERIMETER OF DOOR AND WINDOW FRAMES TO THE WALL. MATCH FRAME COLOR. CAULK EDGES AND VOIDS ALONG WINDOW STOPS OF HOLLOW METAL FRAMES PRIOR TO PAINTING TO PROVIDE A CLEAN FINISHED APPEARANCE.
- ALL LABELS ON RATED DOORS TO BE FREE OF PAINT AND CLEARLY VISIBLE UPON INSPECTION.

DOOR ABBREVIATIONS:

- AL ALUMINUM
- FG FIBERGLASS
- HM HOLLOW METAL
- IN INSULATED
- SF STOREFRONT
- SS STAINLESS STEEL
- TEMP TEMPERED GLASS
- WIRE WIRED GLASS

144 Fore Street, P.O. Box 618
Portland, Maine 04104
Tel: (207) 772-3846
Fax: (207) 772-1070
www.smrtinc.com

ARCHITECTURE
ENGINEERING
PLANNING
INTERIORS
ENERGY

SMRT

LICENSED ARCHITECT
JANEZ
HANSEN
#1991
4-1-16

B.H. MILLIKEN TENANT FIT-UP

205 PRESUMPSCOT STREET, PORTLAND, ME
PERMIT SET
4-1-16

CURRENT ISSUE STATUS:

REV	DESCRIPTION	DATE

GRAPHIC SCALE:
0' 1'

SCALE: As indicated
PROJECT MANAGER: J.L.H.
JC/DRAWN BY: SHK
A/E OF RECORD: J.L.H.
PROJECT NO.: 16030
SMRT FILE: AE210-16030
DATE:

SHEET TITLE:
**INT. ELEVS,
SCHEDULES, &
DETAILS**

SHEET No.
AE210
©COPYRIGHT 2014 SMRT INC