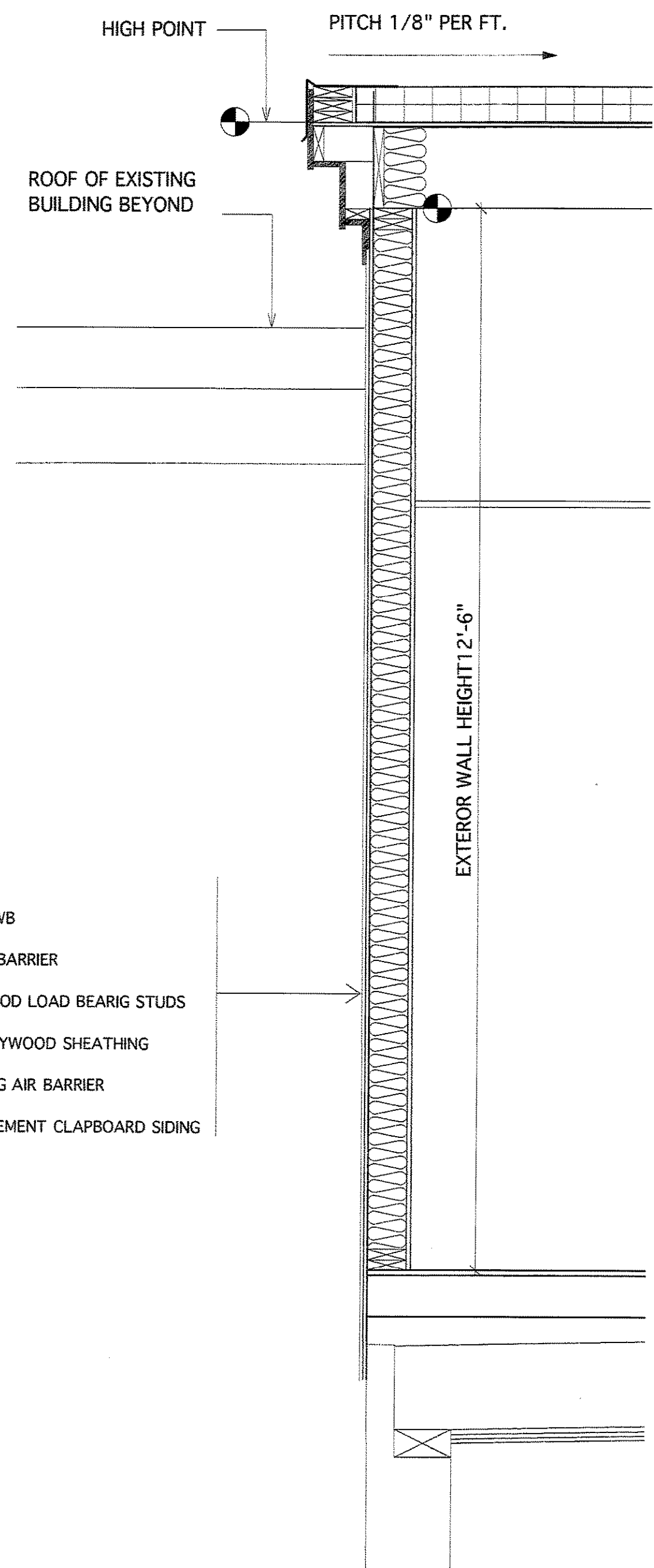


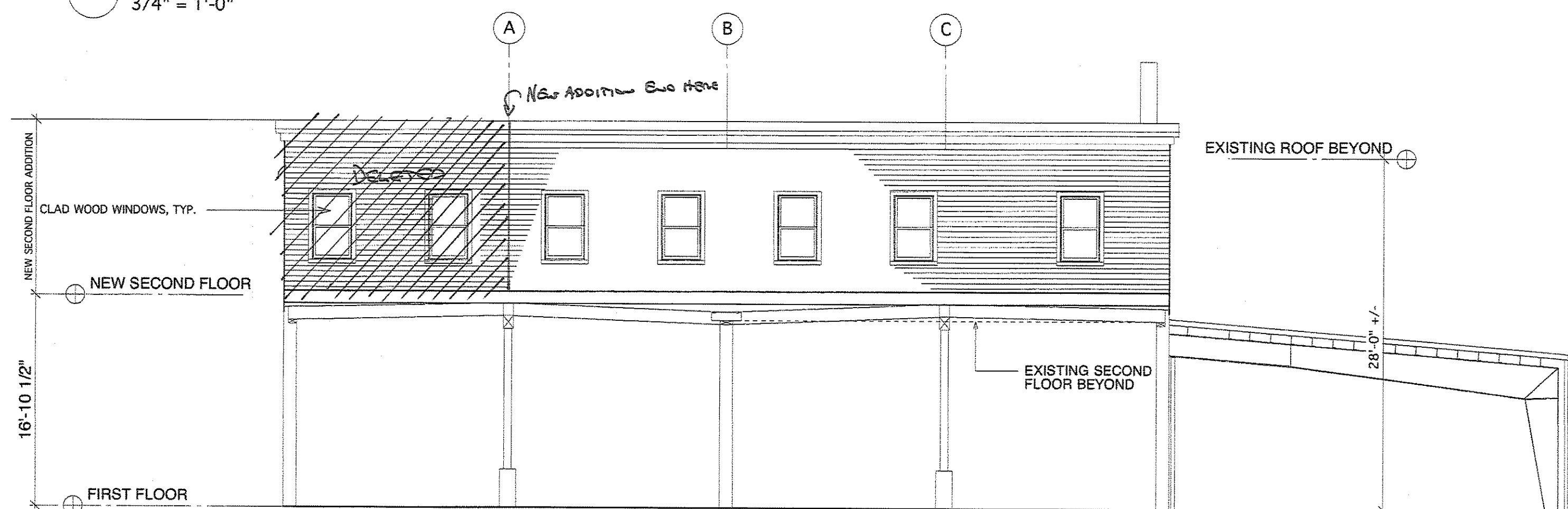
WRAP COLUMNS AND BEAMS WITH 2 LAYERS OF 5/8" TYPE X GWB INSTALLED ON FURRING OF 1 5/8" METAL STUDS. TYP.

2 LAYERS TYPE X 5/8" GWB ON HAT CHANNEL INSTALLED ON THE UNDERSIDE OF THE EXISTING ROOF RAFTERS TO FORM A RATED CEILING SEE PLANS FOR EXTENT OF WORK.

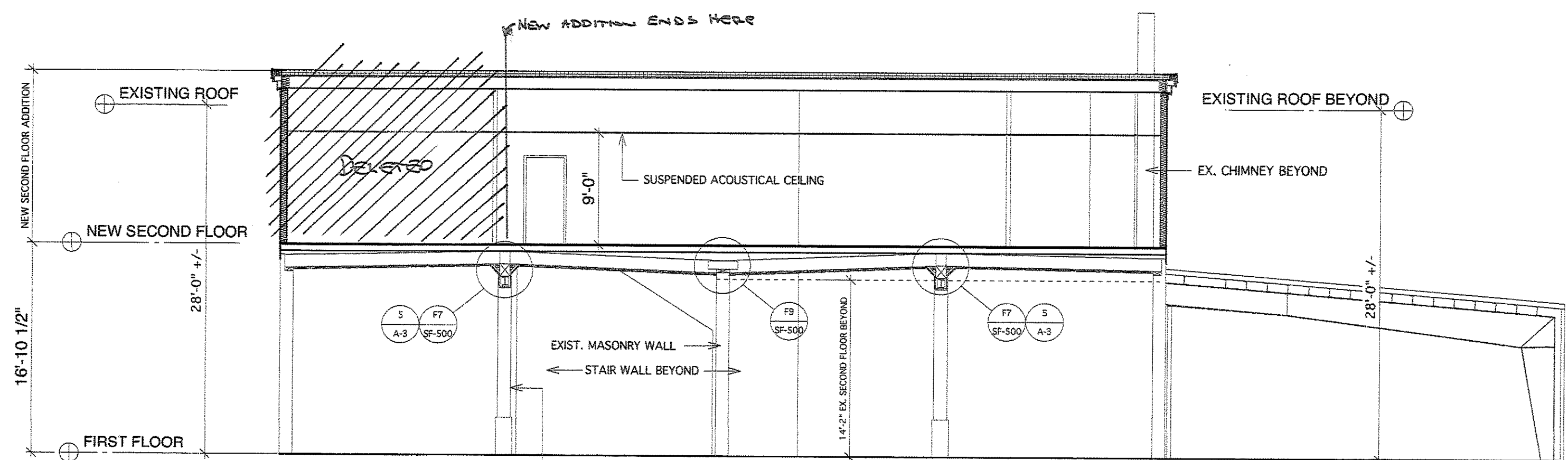
5 DETAIL  
3/4" = 1'-0"



4 WALL SECTION  
Scale: 3/4" = 1'-0"

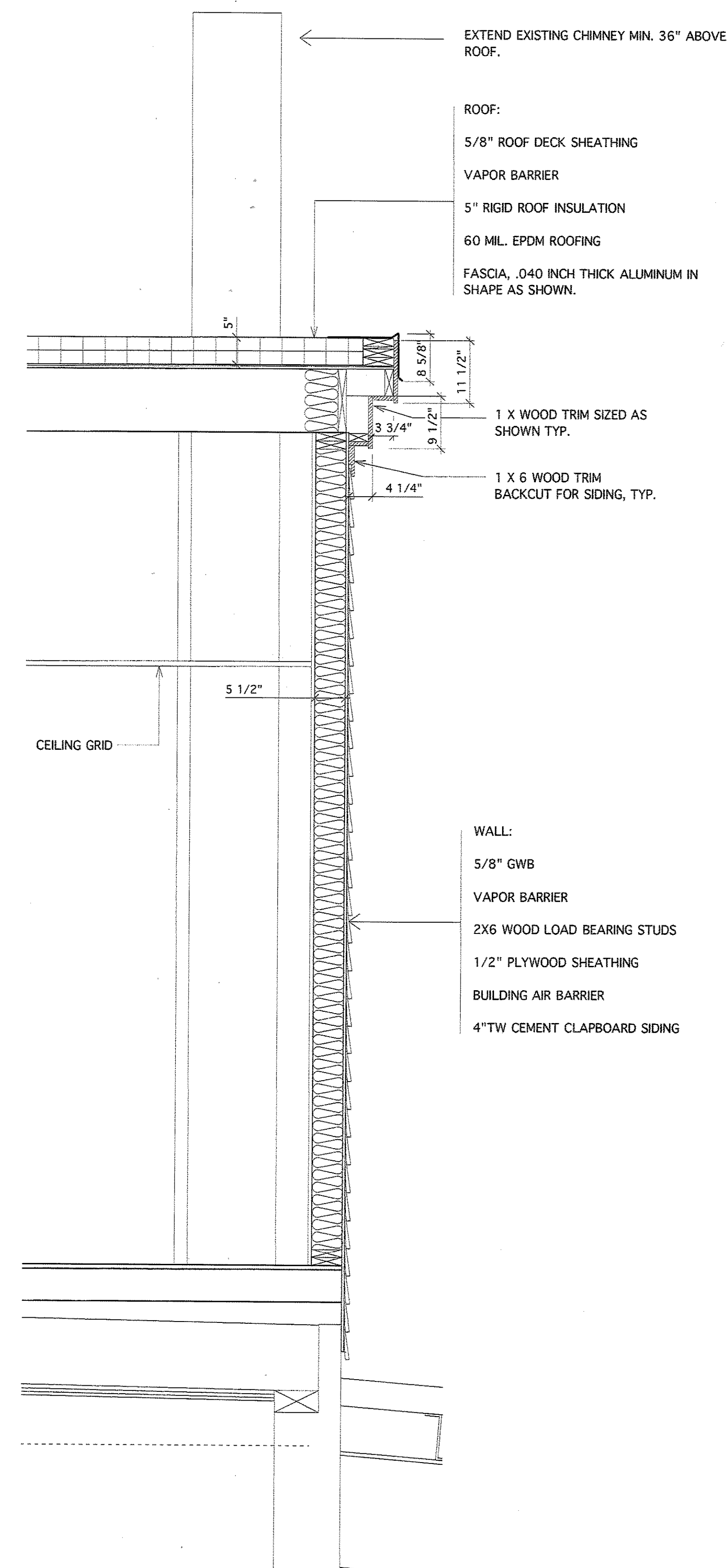


2 ELEVATION/SECTION  
Scale: 1/8" = 1'-0"



1 SECTION  
Scale: 1/8" = 1'-0"

2 HR. FIRE RATING FOR ALL COLUMNS AND BEAMS  
1 5/8" METAL STUDS  
2 LAYERS OF TYPE X 5/8" GWB



3 WALL SECTION  
Scale: 3/4" = 1'-0"

Design Firm  
HKTA / architects, inc.  
452 Congress Street, Suite 200  
Portland, Maine 04101  
HKTA / architects  
Phone: 207.778.6016  
Fax: 207.778.9128  
email: hktainc.com

Consultant

Project Title  
**HASCALL AND HALL BUILDING  
SECOND FLOOR ADDITION**  
273 Presumpscot Street  
Portland, Maine 04104

Issue/Revision	Date	Mark	Description
Project ID	2007030		
CAD File Name			
Drawn By			
Checked By	REH		
Issue Date	3/21/08		
Plot Date			
Reviewed by	REH		
Designed by	REH		
Submitted By			
Drawing Code	SHEET-ELEV-1		
Sheet Title	SECTION/ELEVATION		

SECTION/ELEVATION

Drawing No.  
**A-3**  
of 3