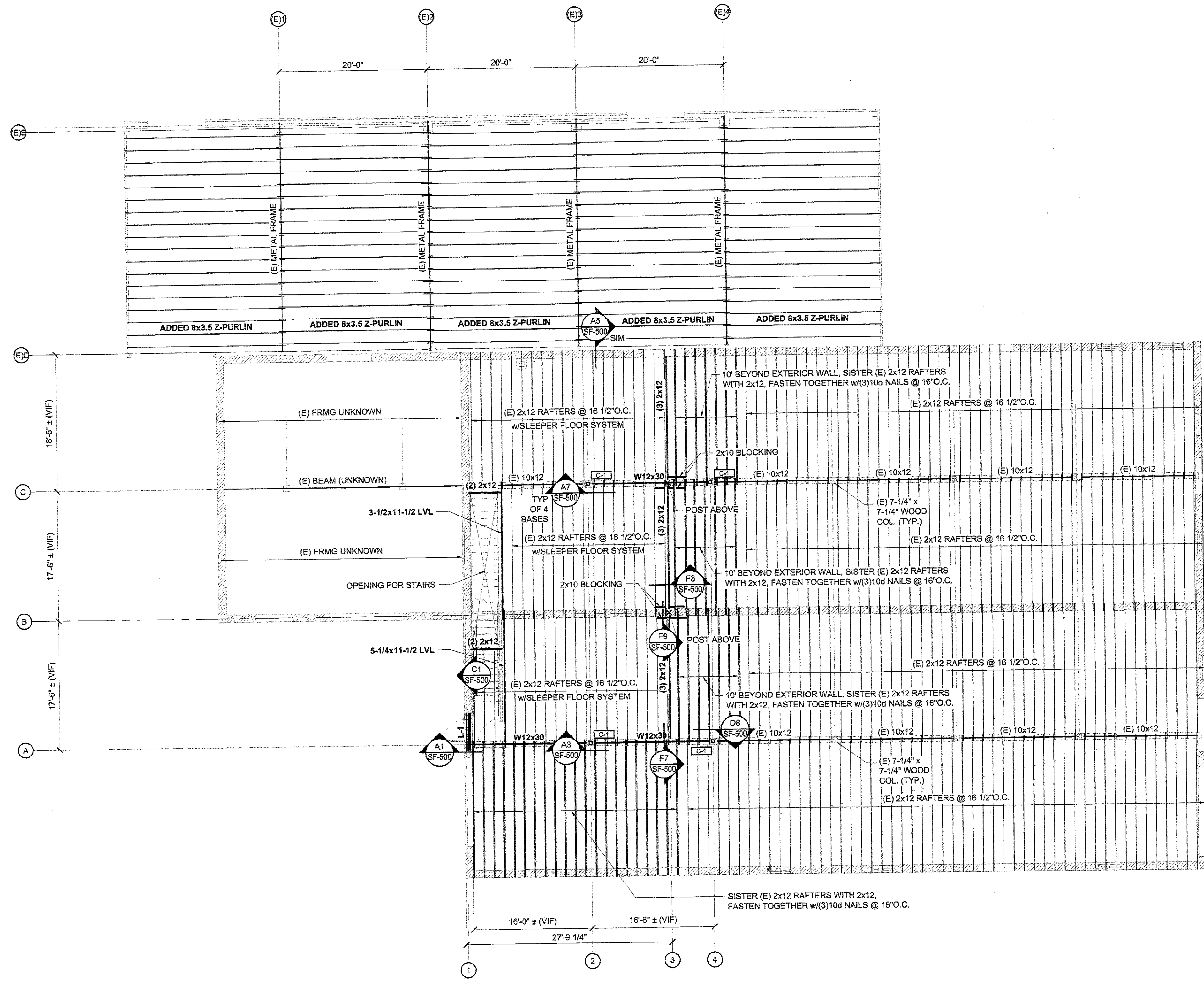


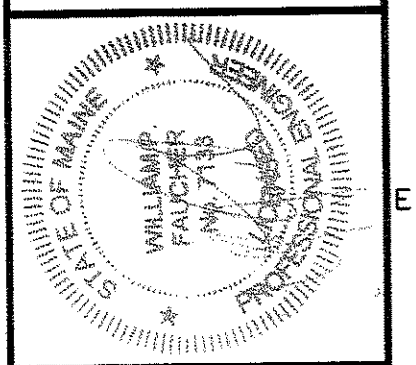
N:\Projects\2007\07099 - Hascall and Hall Building\00 Drawing Files\07099S.dwg Sep 10, 2010 - 11:34am



- SECOND FLOOR FRAMING PLAN NOTES:**
- C-1 = HSS 5x5x5/16
  - L-1 = PROVIDE SINGLE L6x4x1/4(LLV) PER WYTHE MIN. 4" BEARING EACH END
  - SEE DRAWING SA-100 FOR PROPOSED FLOOR PLAN LAYOUT INCLUDING STAIR DETAILS

160 Veranda Street  
 Portland, Maine 04103  
 T: 207.221.2260  
 F: 207.221.2266  
 Web: www.allied-eng.com

**Allied Engineering**  
 Structural Mechanical Electrical Commissioning



REVISIONS	
NUMBER	DESCRIPTION

Date: 09/10/2010  
 Drawn By: PED  
 Checked By: WPF  
 Project Mgr: WPF  
 Project No: 07099  
 Cad File: 07099S.DWG  
 Graphic Scale: 0 1'

STRUCTURAL PLANS ~  
 SECOND FLOOR FRAMING

HASCALL AND HALL BUILDING  
 SECOND FLOOR ADDITION  
 PORTLAND, MAINE

**SF-100**