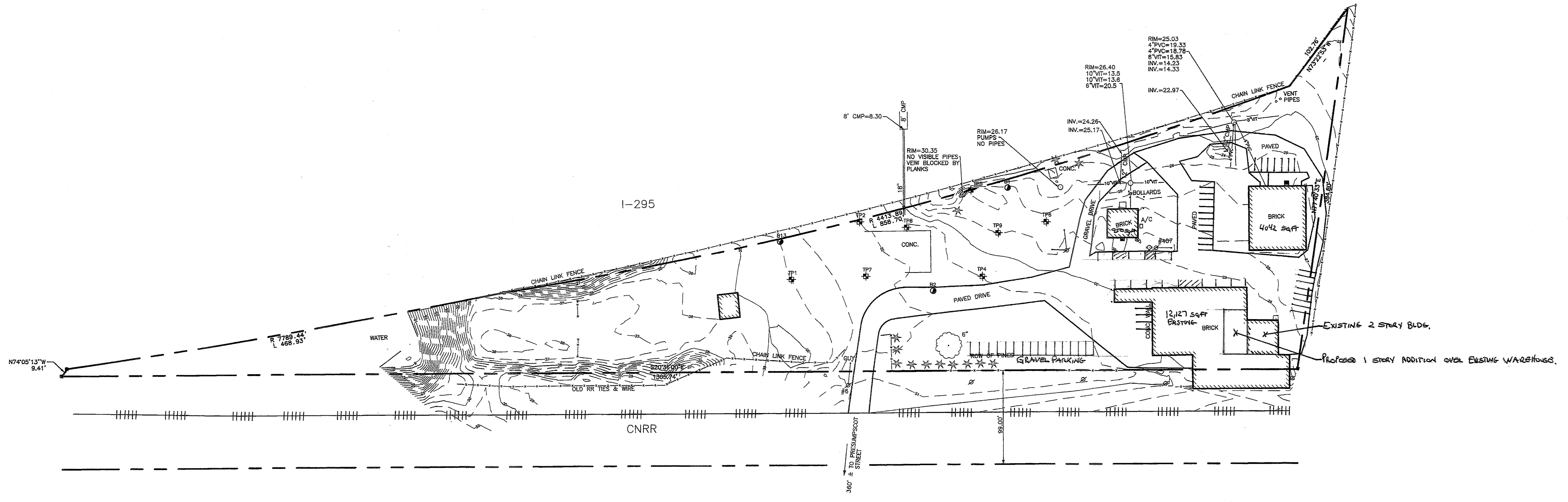


LOCATION MAP N.T.S.



I-295

CNRR

#299  
PRESUMPSCOT STREET

PLAN REFERENCE:

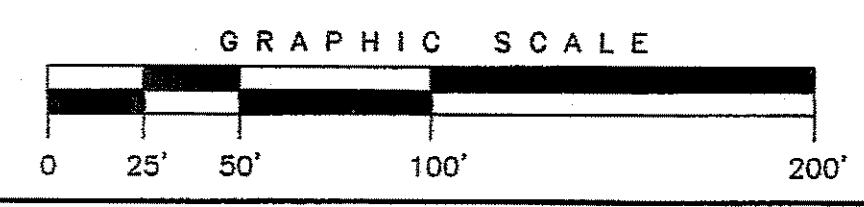
1. "LAND IN PORTLAND, MAINE BELONGING TO EDWIN F. SMITH AND RUDOLPH L. VIOLETTE" BY A.W.I. ENGINEERING CO. DATED NOVEMBER 1984.

LEGEND:

- IRON PIPE OR ROD FOUND
- CONC. MONUMENT FOUND
- HYDRANT
- UTILITY POLE
- MANHOLE
- CATCH BASIN
- WATER VALVE
- DECIDUOUS TREE
- CONIFEROUS TREE
- FENCE
- - - EXISTING 1' CONTOUR
- ⊕ TEST PIT
- BORING

NOTE:

1. PERIMETER BOUNDARYS TAKEN FROM PLAN REFERENCE 1.



**TOPOGRAPHIC SURVEY**  
ON  
PRESUMPSCOT STREET, PORTLAND, MAINE  
MADE FOR  
**HASCALL & HALL**  
273 PRESUMPSCOT STREET, PORTLAND, MAINE

**OWEN HASKELL, INC.**  
16 CASCO STREET, PORTLAND, ME 04101 (207) 774-0424  
PROFESSIONAL LAND SURVEYORS

Drwn By	EC	Date	Job No.
Trace By	RWC	OCTOBER 13, 1999	99289P
Check By	JPRC	Scale	Drwg. No.
Book No.	884	1" = 50'	1