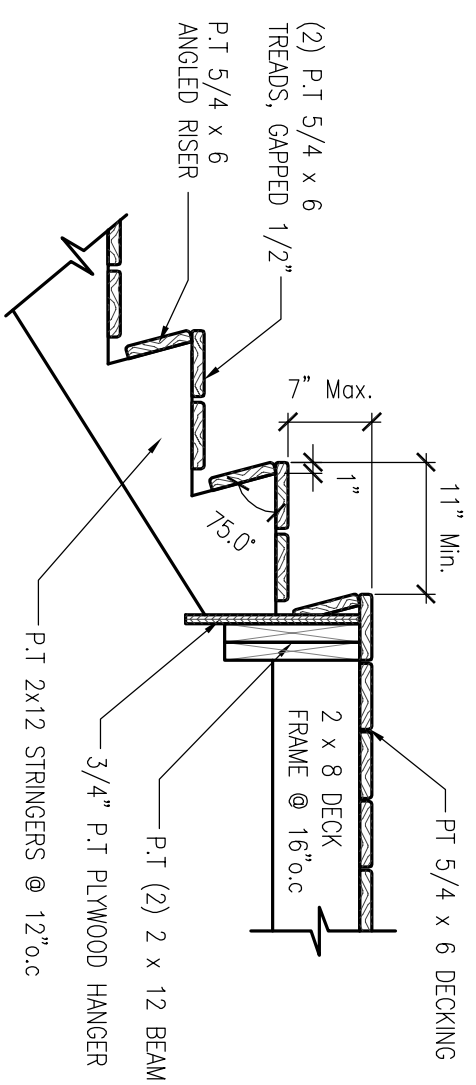


**ABBREVIATIONS:**

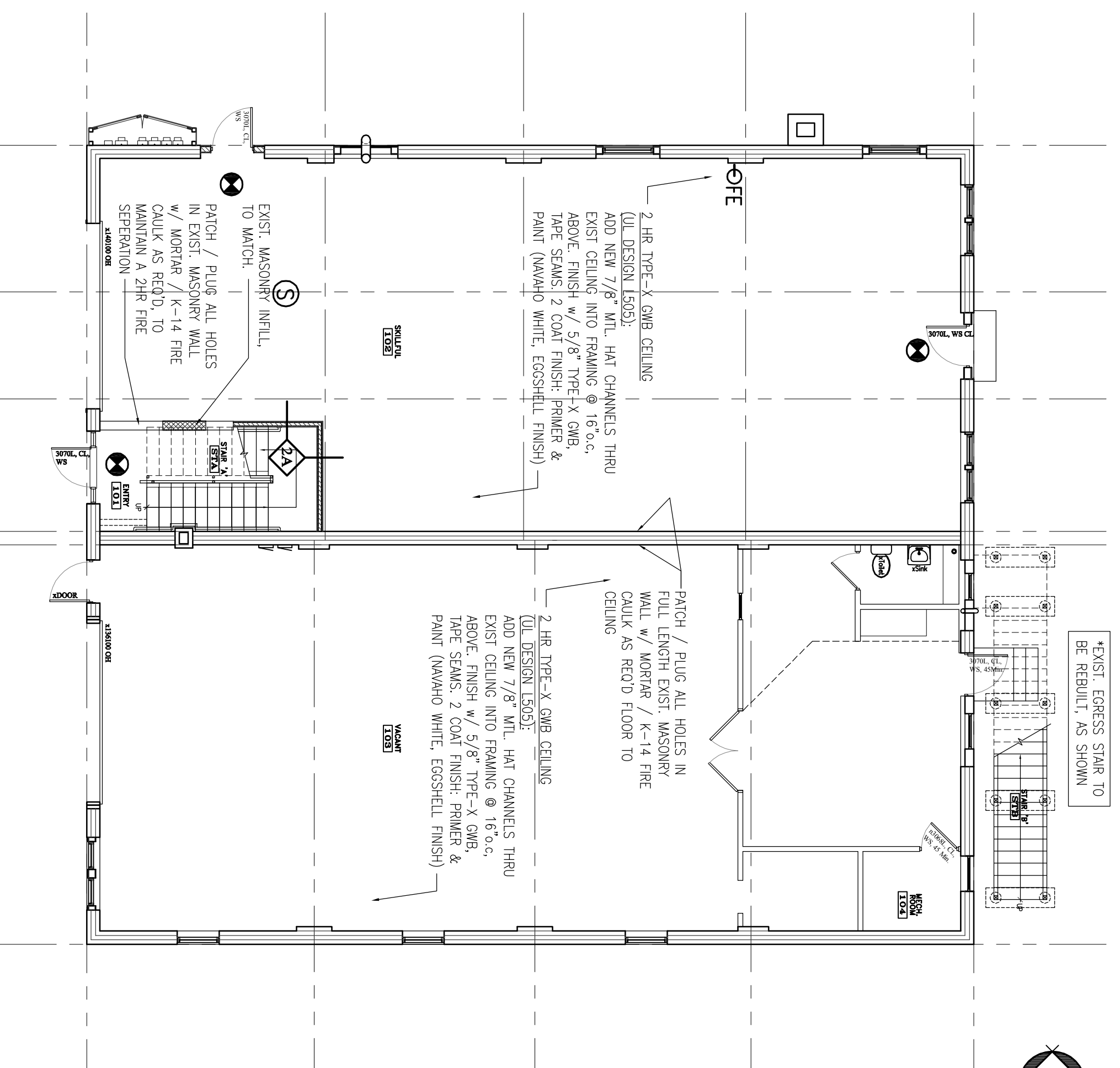
C.O.	=	CASED OPENING w/ 1x3 FLAT CASING
CL	=	w/ EASED EDGES
CS	=	DOOR CLOSER
DB	=	WEATHER STRIPPING SYSTEM
L	=	DATA BOLT
LS	=	LOCKED
X	=	EXISTING TO REMAIN



EGRESS STAIR NOSING DETAIL  
SCALE: 3/4" = 1'-0"

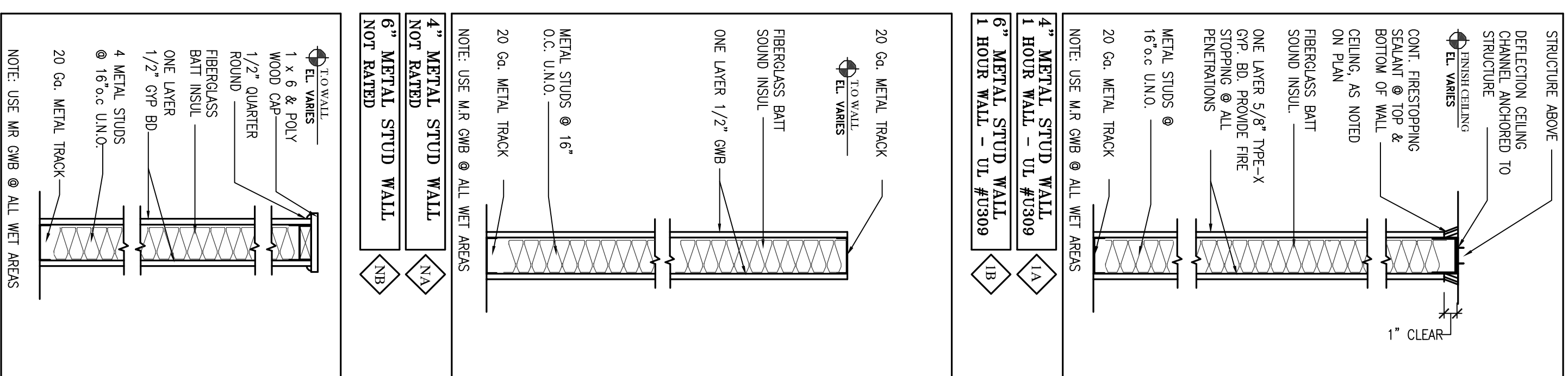
**FIRE PROTECTION LEGEND**

- FE FIRE EXTINGUISHER
- EXIT LIGHT
- STROBE ONLY WITH CANDELLA RATING AS NOTED
- HORN STROBE WITH CANDELLA RATING AS NOTED
- DUAL EMERGENCY LIGHT
- SINGLE EMERGENCY LIGHT
- SMOKE DETECTOR (CEILING)
- CARBON MONOXIDE DETECTOR
- FIRE ALARM MASTER CONTROL PANEL
- PULL STATION
- EXTERIOR EGRESS LIGHT
- MAE NOT AN EXIT SIGN w/ RASSED BRILLE
- VAIA VAI ACCESSIBLE
- CD CARBON MONOXIDE DETECTOR



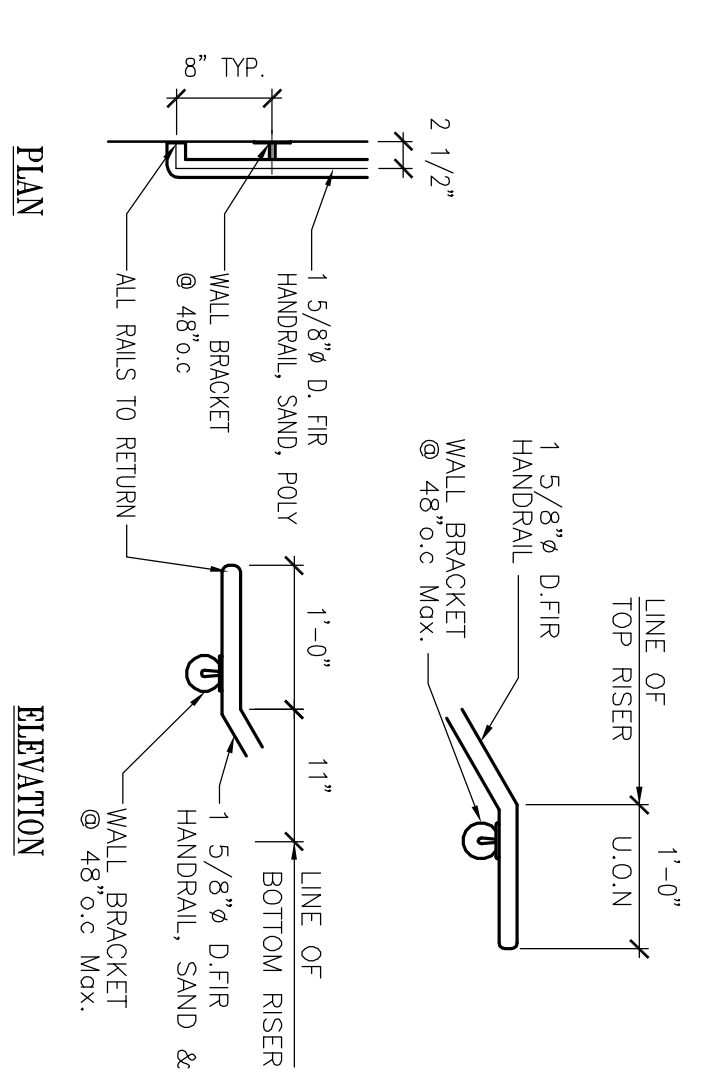
FIRST FLOOR PLAN  
SCALE: 1/8" = 1'-0"

REFER TO DWG A-1.1 FOR ENLARGED FIRST FLOOR PLAN

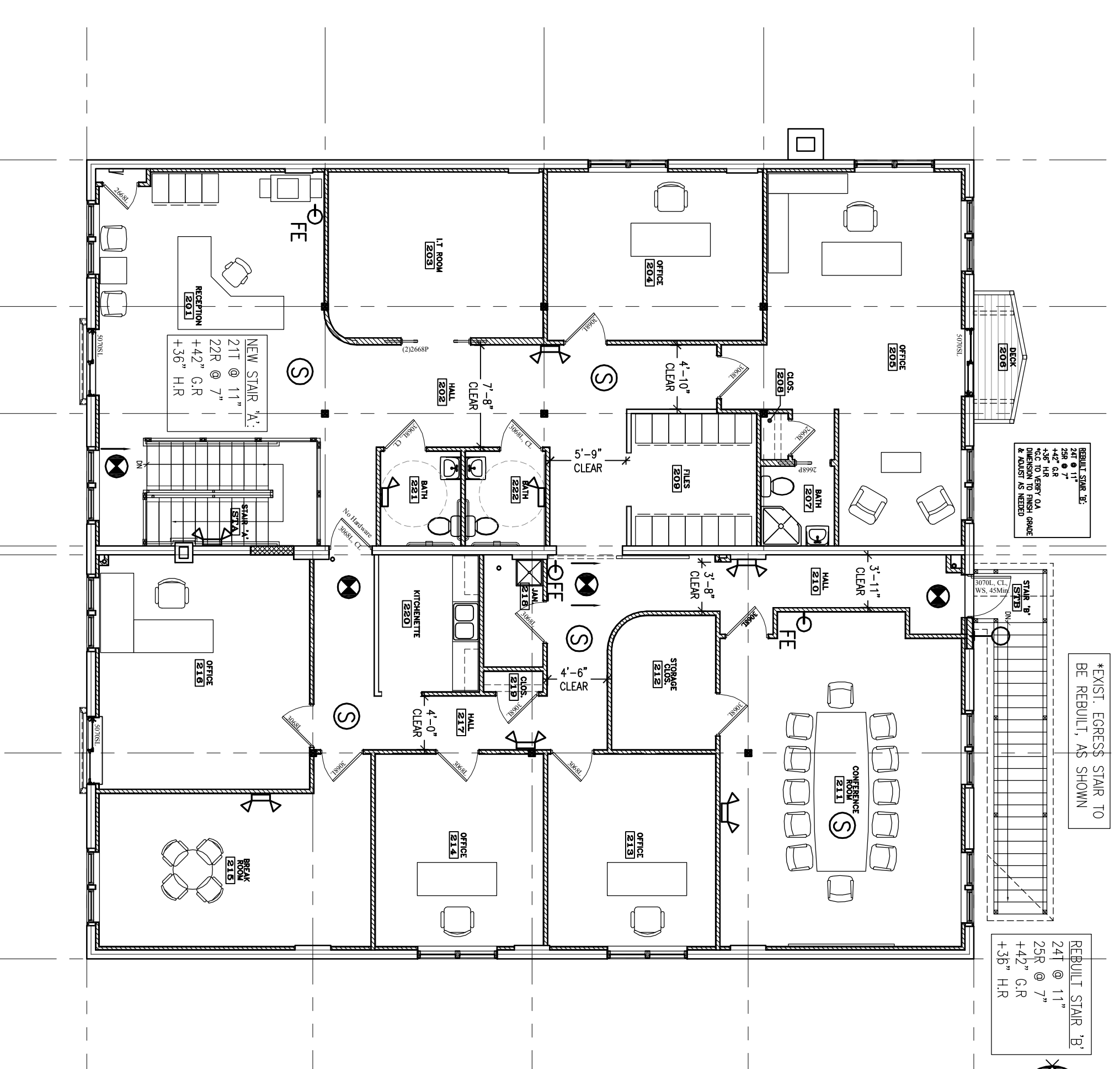


HAIR WALL @ FILLS AREA NOT RATED

PARTITION TYPES:  
SCALE: NTS

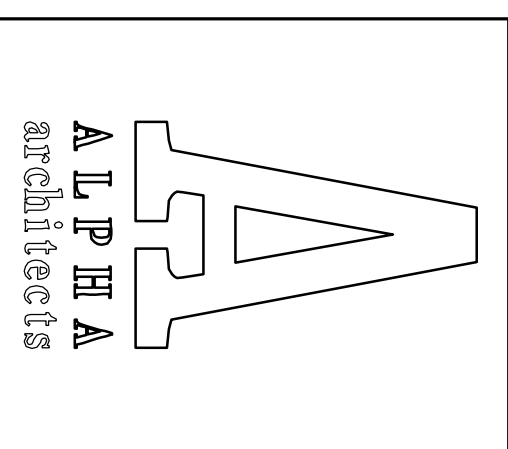


WALL MOUNTED RAILING DETAIL  
SCALE: 3/4" = 1'-0"



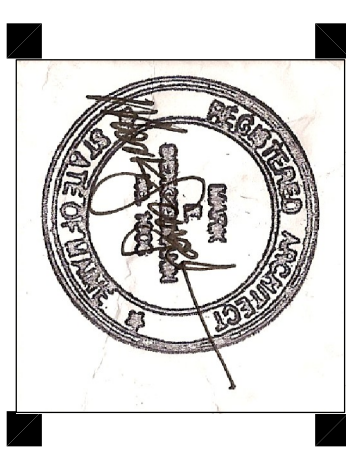
SECOND FLOOR PLAN  
SCALE: 1/8" = 1'-0"

REFER TO DWG A-1.2 FOR ENLARGED SECOND FLOOR PLAN



17 CHESTNUT STREET  
PORTLAND, ME 04101  
PHONE: 207.761.9500  
FAX: 207.761.9595  
design@alpharchitects.com

**COPYRIGHT**  
Reuse or reproduction of the contents of this document is not permitted without written permission of ALPHA ARCHITECTS



**Hascall and Hall Offices**  
273 Presumpscot Street  
Portland, ME 04103

JOB: 11112

ISSUE DATE	
PRELIM.	03-23-11
Board	-
CDS	-
REV. 1	-
REV. 2	-
PRINT	05-11-11

FIRST & SECOND FLOOR PLANS  
**A-1.0**

PERMIT SET  
05-11-11