



RYAN SENATORE  
**ARCHITECTURE**  
505 CONGRESS STREET  
PORTLAND, MAINE 04101  
207-650-6414  
senatorearchitecture.com

CONSULTANTS:  
**STRUCTURAL:**  
Structural Integrity  
77 Oak Street  
Portland, ME 04101  
207-774-4614

REVISIONS:

DATE: 10-16-17

PROJECT No.

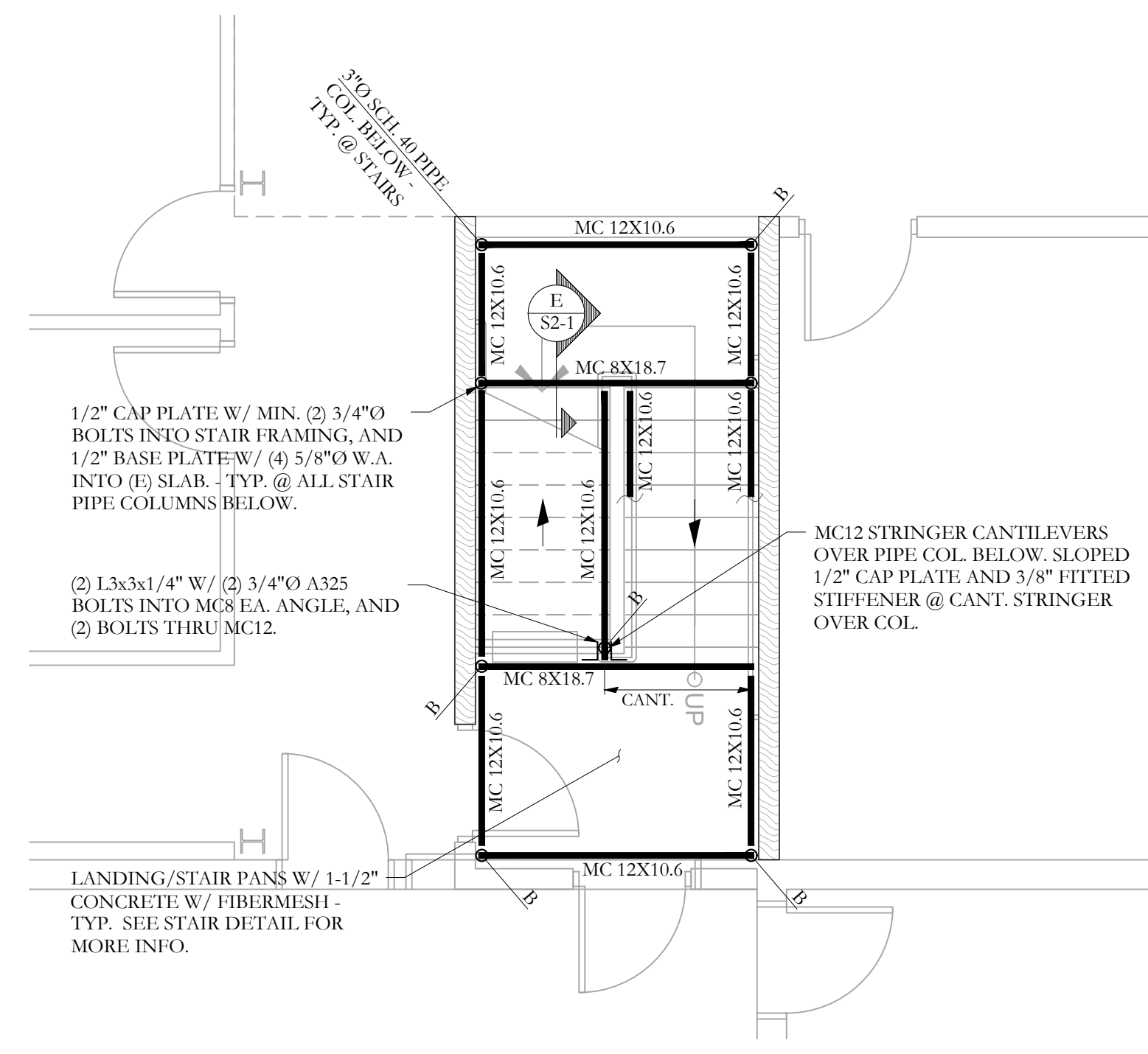
DRAWN BY: BDO

CHECKED BY: ACJ

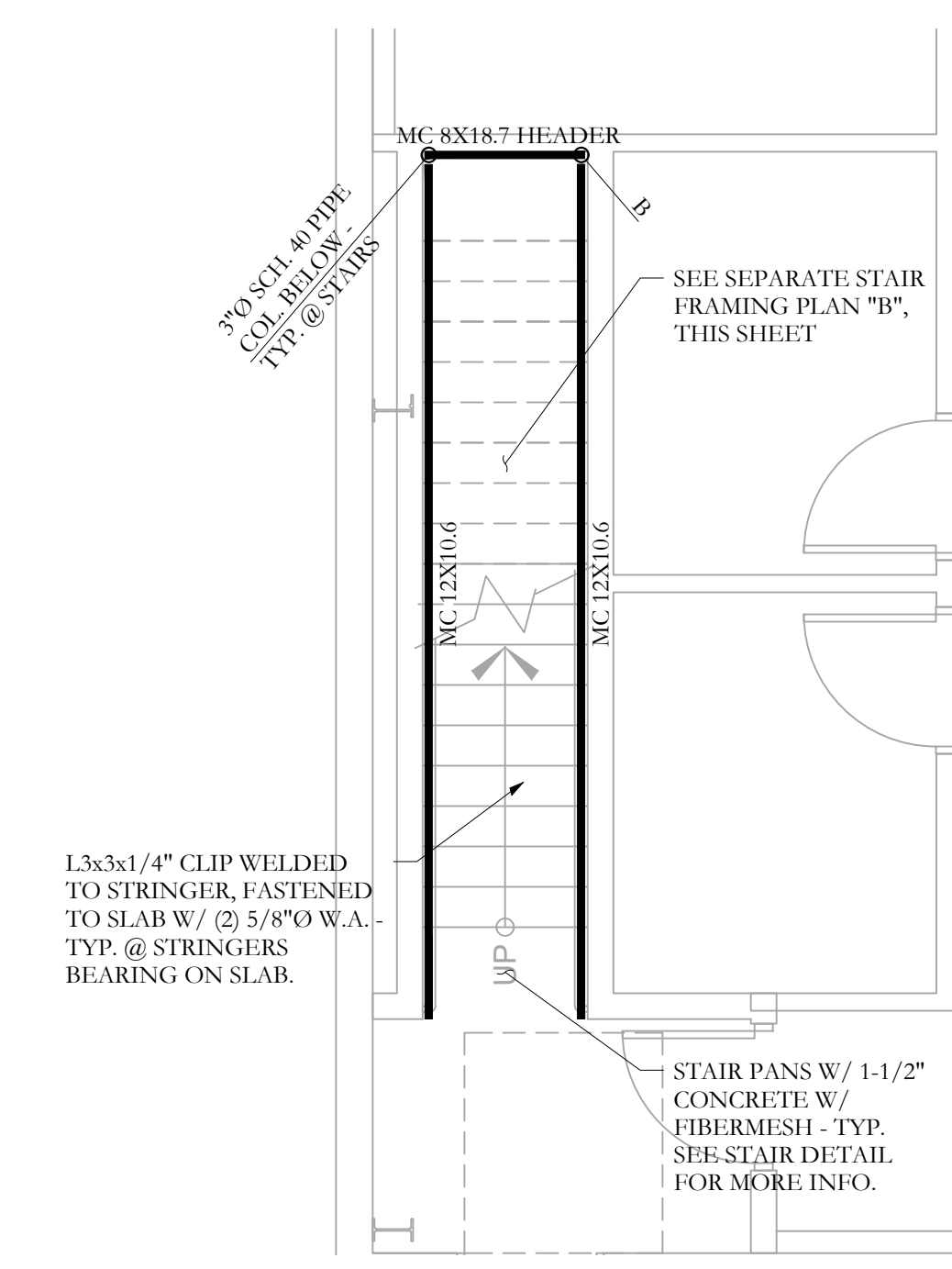
SCALE: AS NOTED

SHEET TITLE:  
SECOND FLOOR FRAMING PLAN

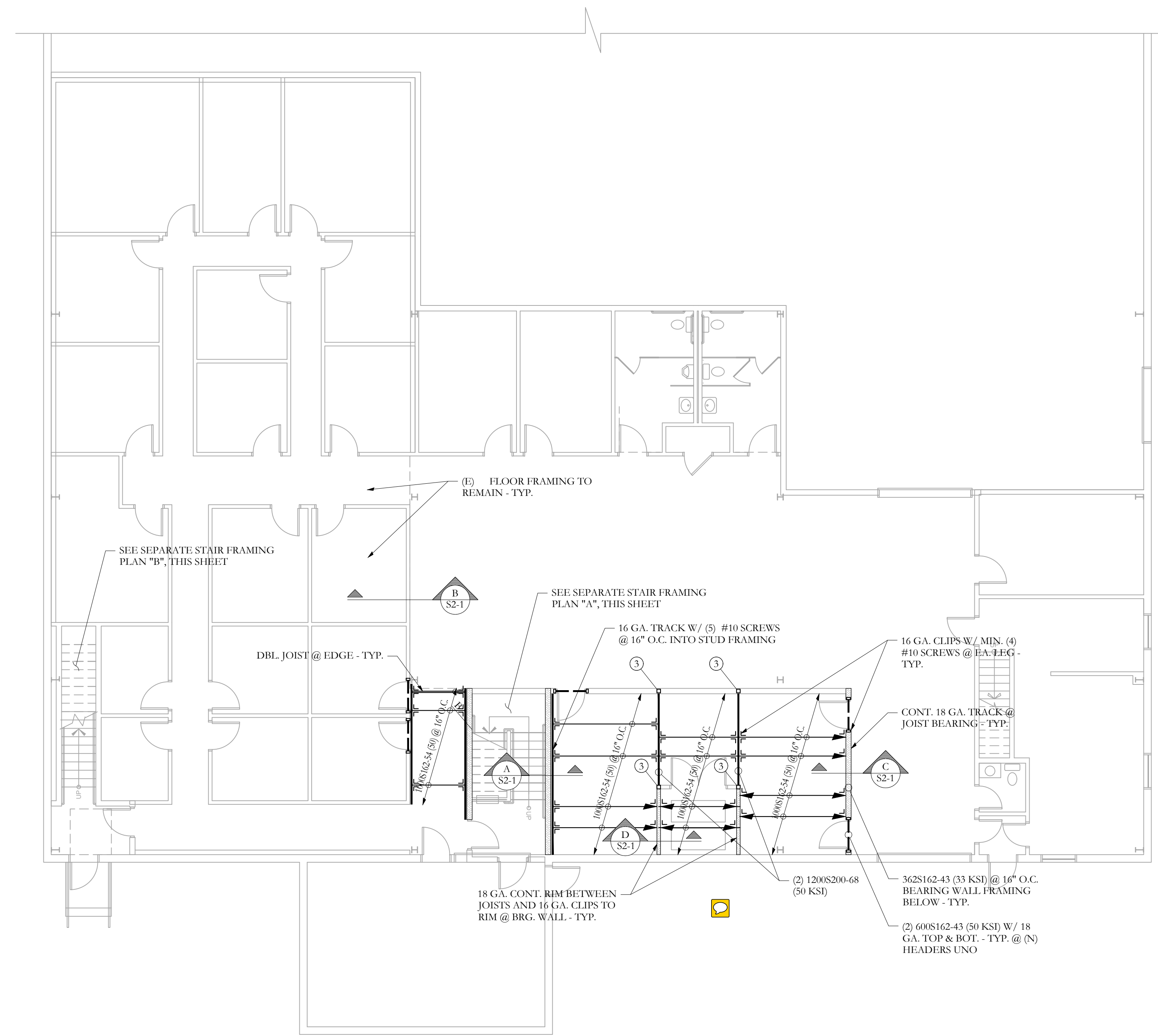
S1.1



STAIR FRAMING PLAN "A"  
SCALE 1/4"=1'-0"



STAIR FRAMING PLAN "B"  
SCALE 1/4"=1'-0"

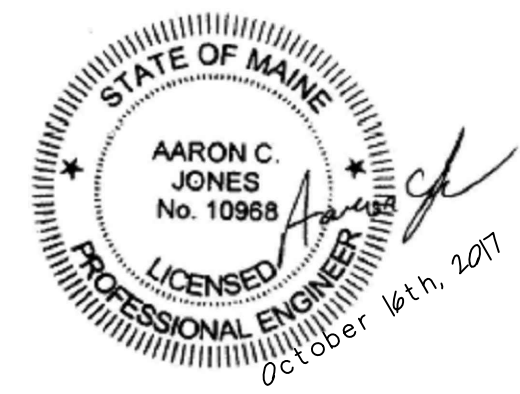


SECOND FLOOR FRAMING PLAN  
NOTES:  
1. 2" CONCRETE TOPPING OVER METAL DECK - TYP.  
2. SEE GENERAL NOTES FOR MORE INFO. - TYP.  
SCALE 1/8"=1'-0"

FRAMING PLAN SYMBOLS KEY	
□	POST
○	STEEL COLUMN
(X)	NUMBER OF METAL STUDS IN POST BELOW
▲	COLUMN ABOVE THIS LEVEL
●	COLUMN CONTINUOUS THROUGH THIS LEVEL
/E/	EXISTING COLUMN BELOW
←	JOIST BEARING
→	CONTINUOUS JOIST WITH INTERMEDIATE BEARING
↔	FLUSH FRAMED JOIST BEARING WITH HANGER
▬	METAL STUD BEARING WALL BELOW
▬	SHEAR WALL
2xT	NUMBER OF TRIM STUDS UNDER HEADER
2xK	NUMBER OF KING STUDS ADJACENT TO HEADER



46 Forest Avenue  
Portland, ME, 04101  
P. 207-774-4614  
F. 866-793-7835  
www.structuralinteg.com  
BUILD WITH CONFIDENCE  
© 2017 Structural Integrity Consulting Engineers, Inc.  
SI # 17-0188



FOR PERMIT