

© 2017 RYAN SENATORE ARCHITECTURE

GRIME STUDIOS
PORTLAND, MAINE



RYAN SENATORE
ARCHITECTURE
565 CONGRESS STREET, SUITE 304
PORTLAND, MAINE 04101
207-850-6414
senatorearchitecture.com

CONSULTANTS:

REVISIONS:

DATE: OCTOBER 16, 2017

PROJECT No. 1428

DRAWN BY: RJS / RRT

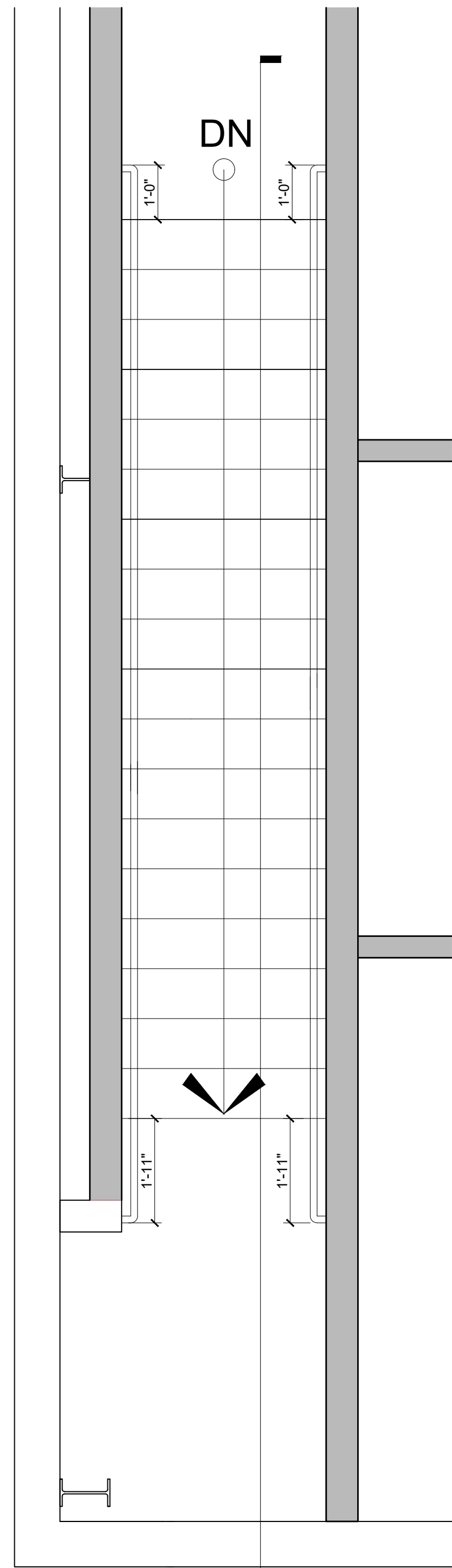
CHECKED BY: RJS

SCALE: AS NOTED

SHEET TITLE:

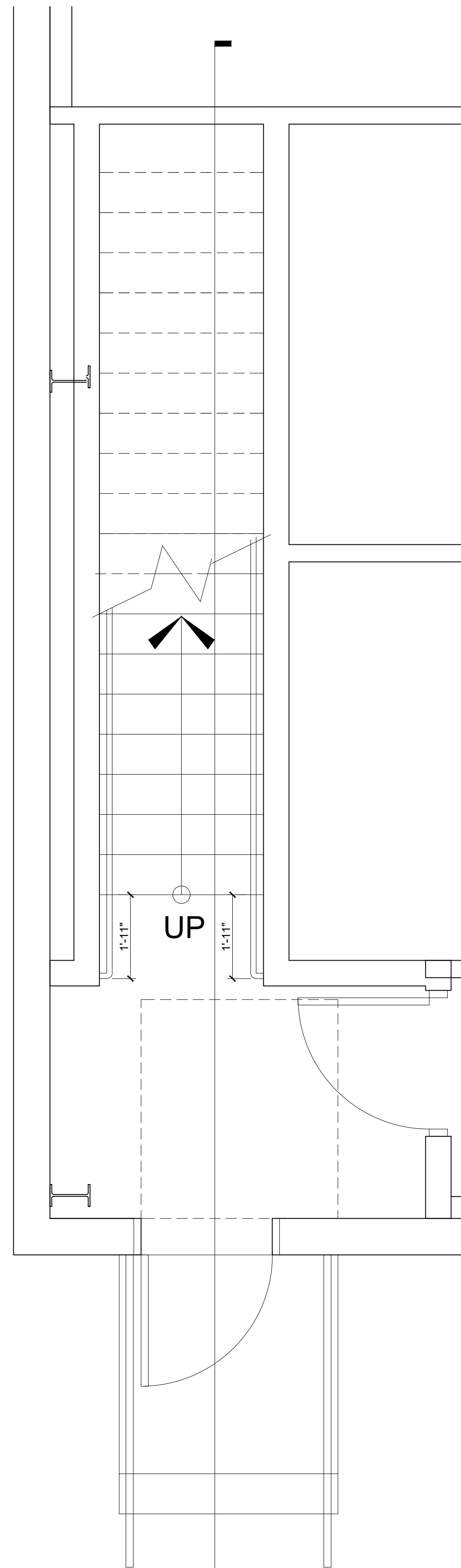
STAIR DETAILS

A6-1



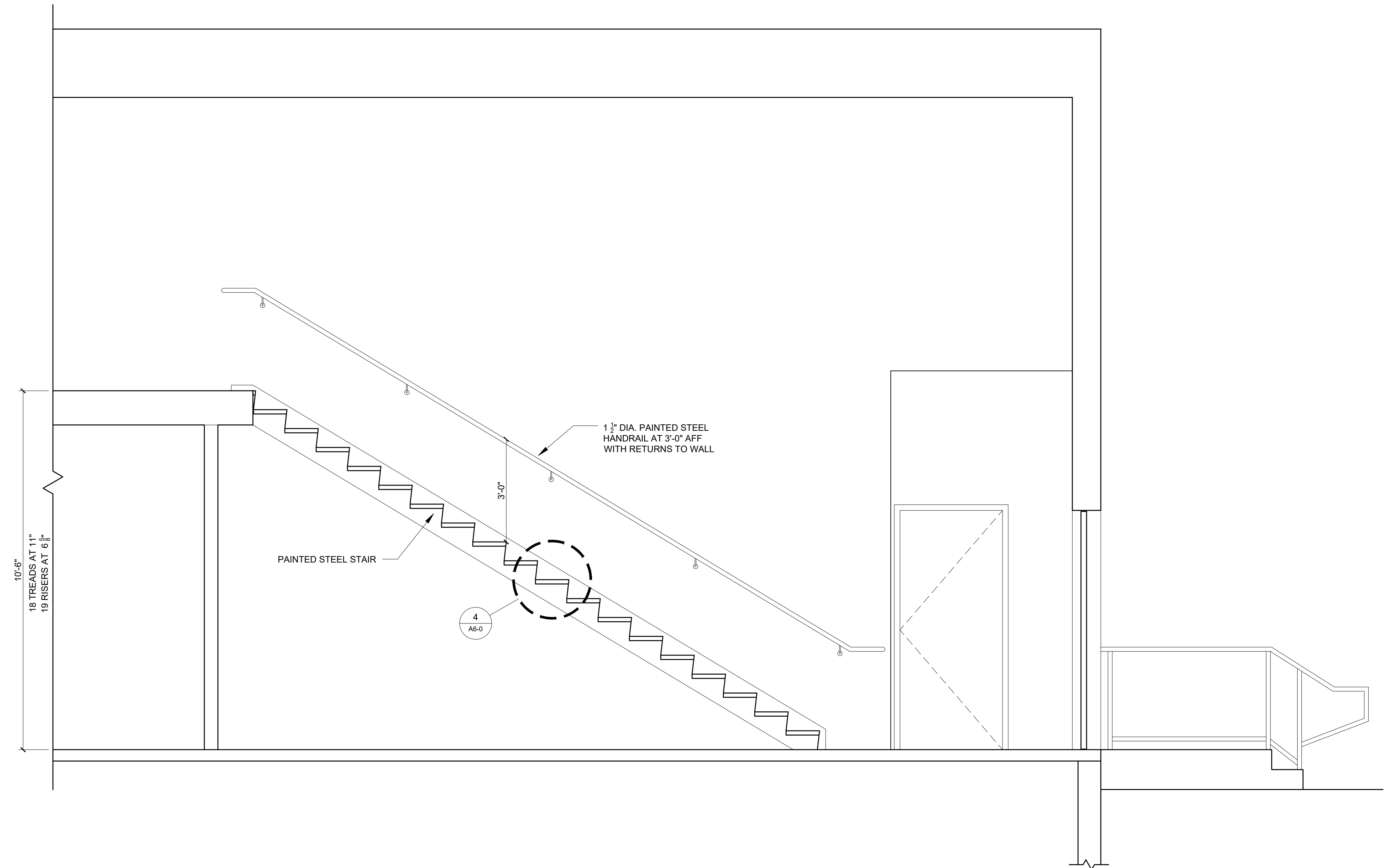
1
A6-1

3 STAIR PLAN
1/2" = 1'-0"



1
A6-1

2 STAIR PLAN
1/2" = 1'-0"



1 STAIR SECTION
1/2" = 1'-0"