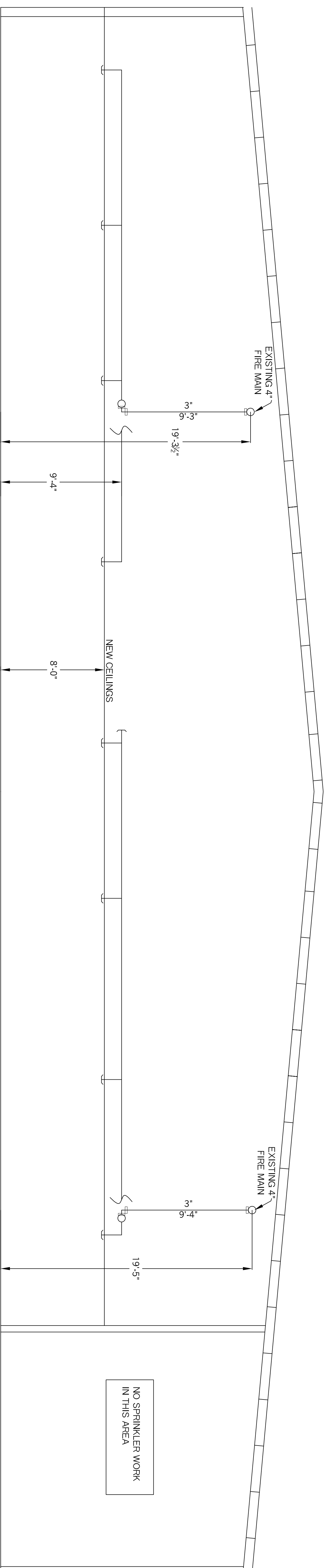
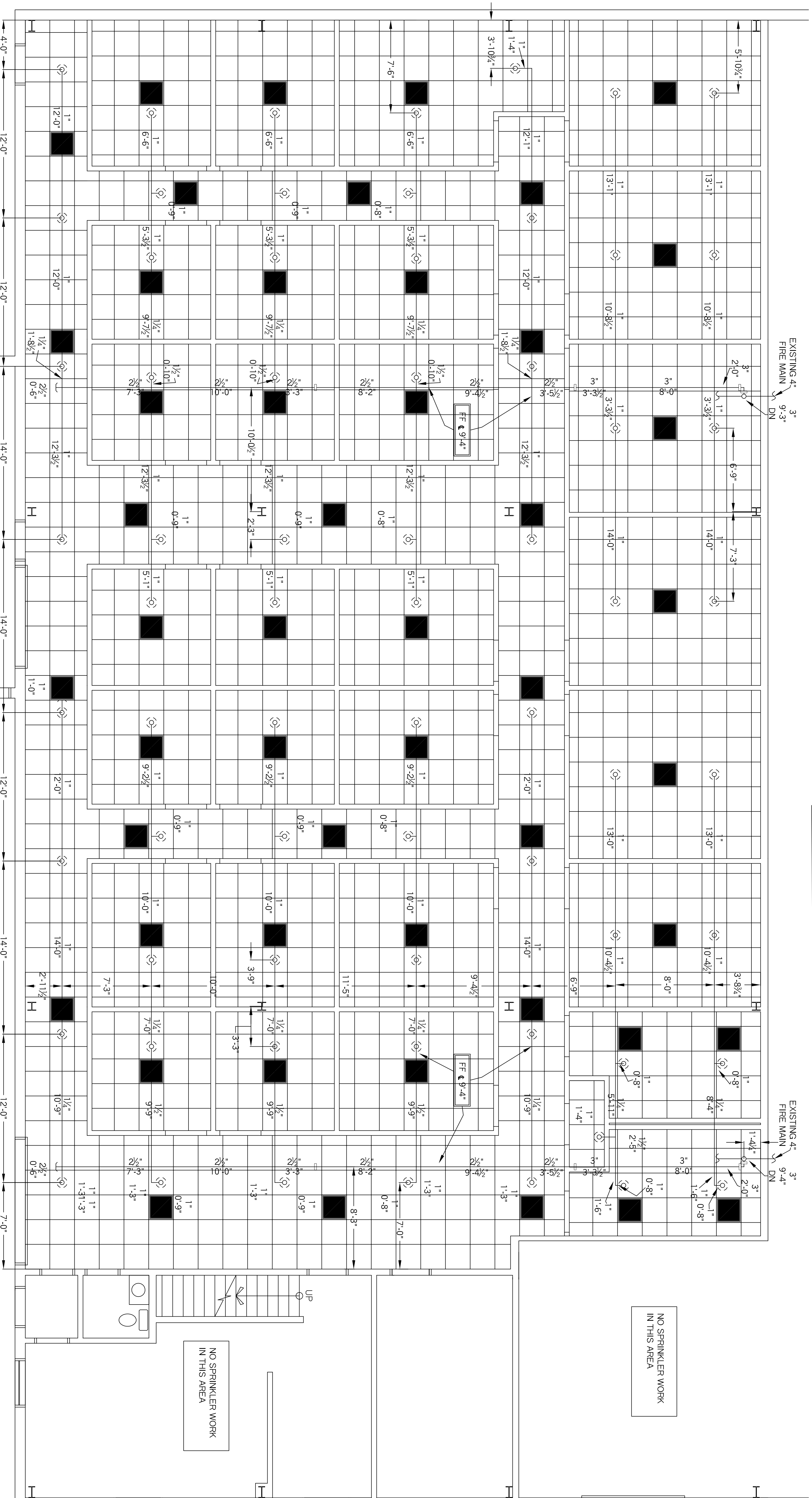


PLAN NORTH



CROSS SECTION

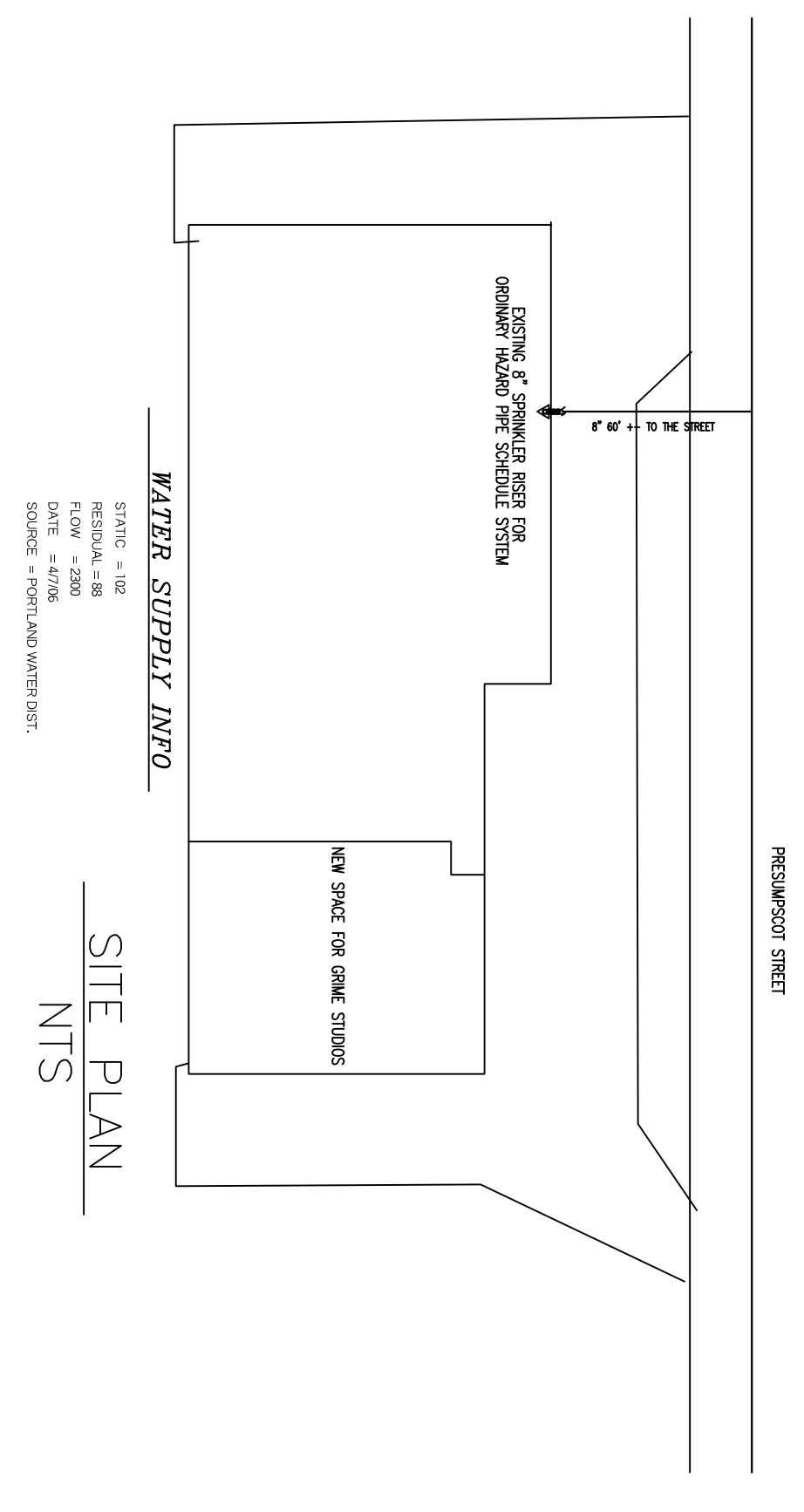


NEW LAYOUT

NO SPRINKLER WORK
IN THIS AREA

NO SPRINKLER WORK
IN THIS AREA

NO SPRINKLER WORK
IN THIS AREA



SITE PLAN

- LEGEND**
- ▷ 155F OR 1/2" WHITE SIDEWALL
 - 155F 1/2 BRASS PENDENT
 - 155F 1/2 BRASS UPRIGHT
 - ⊗ 155F OR 1/2" WHITE RECESSED PENDENT
 - 200F OR 1/2" BRASS UPRIGHT
 - HANGER
 - RISE OR DROP NIPPLE
 - VICTALUC COUPLING
 - FF K=XX FIN FLR TO CENTERLINE OF PIPE
 - C K=XX CEILING TO CENTERLINE OF PIPE
 - T J K=TOP OF JOIST TO CENTERLINE OF PIPE
 - B J K=BOTTOM OF JOIST TO CENTERLINE OF PIPE
 - BB K=BOTTOM OF BEAM TO CENTERLINE OF PIPE
 - ELEV K=GIVL ELEVATION OF CENTERLINE OF PIPE

- 66 VIKING VK302
- 155F WHITE OR RECESSED PENDENTS
- 1/2"x1/2" K=5.6

SYSTEM DESIGN

A WET PIPE SYSTEM OF AUTOMATIC SPRINKLERS TO BE DESIGNED AND INSTALLED PER NFPA 13 PIPE SCHEDULE ALL SPRINKLERS TO BE BASED ON LIGHT HAZARD

GENERAL NOTES

- ALL DIMENSIONS ARE CENTER TO CENTER U/N
- ALL THREADED PIPE TO BE SCH. 40 BLACK STEEL
- ALL SCREWED FITTINGS TO BE STD. WT. C.I. BLACK U/N
- ALL GROOVED PIPE TO BE SCH 10 BLACK STEEL

RESIDENTIAL FIRE PROTECTION, LLC
 PHONE (607) 946-3473 FAX (607) 946-3474
 64 DAGGETT HILL ROAD GREENE, MAINE 04236

REVISION NUMBER	DATE	SUBMITTED BY	DATE	TITLE
66	12-13-14	IRP/AMN BY	12-13-14	GRIME STUDIOS
65	12-15-14	APPROVED BY	12-15-14	299 PRESUMPCOTT STREET
64	1-10-14	SCALE	1/2"=1'-0" U/N	PORTLAND, MAINE
63	1-10-14	SCALE	1/2"=1'-0" U/N	
62	1-10-14	SCALE	1/2"=1'-0" U/N	
61	1-10-14	SCALE	1/2"=1'-0" U/N	
60	1-10-14	SCALE	1/2"=1'-0" U/N	
59	1-10-14	SCALE	1/2"=1'-0" U/N	
58	1-10-14	SCALE	1/2"=1'-0" U/N	
57	1-10-14	SCALE	1/2"=1'-0" U/N	
56	1-10-14	SCALE	1/2"=1'-0" U/N	
55	1-10-14	SCALE	1/2"=1'-0" U/N	
54	1-10-14	SCALE	1/2"=1'-0" U/N	
53	1-10-14	SCALE	1/2"=1'-0" U/N	
52	1-10-14	SCALE	1/2"=1'-0" U/N	
51	1-10-14	SCALE	1/2"=1'-0" U/N	
50	1-10-14	SCALE	1/2"=1'-0" U/N	
49	1-10-14	SCALE	1/2"=1'-0" U/N	
48	1-10-14	SCALE	1/2"=1'-0" U/N	
47	1-10-14	SCALE	1/2"=1'-0" U/N	
46	1-10-14	SCALE	1/2"=1'-0" U/N	
45	1-10-14	SCALE	1/2"=1'-0" U/N	
44	1-10-14	SCALE	1/2"=1'-0" U/N	
43	1-10-14	SCALE	1/2"=1'-0" U/N	
42	1-10-14	SCALE	1/2"=1'-0" U/N	
41	1-10-14	SCALE	1/2"=1'-0" U/N	
40	1-10-14	SCALE	1/2"=1'-0" U/N	
39	1-10-14	SCALE	1/2"=1'-0" U/N	
38	1-10-14	SCALE	1/2"=1'-0" U/N	
37	1-10-14	SCALE	1/2"=1'-0" U/N	
36	1-10-14	SCALE	1/2"=1'-0" U/N	
35	1-10-14	SCALE	1/2"=1'-0" U/N	
34	1-10-14	SCALE	1/2"=1'-0" U/N	
33	1-10-14	SCALE	1/2"=1'-0" U/N	
32	1-10-14	SCALE	1/2"=1'-0" U/N	
31	1-10-14	SCALE	1/2"=1'-0" U/N	
30	1-10-14	SCALE	1/2"=1'-0" U/N	
29	1-10-14	SCALE	1/2"=1'-0" U/N	
28	1-10-14	SCALE	1/2"=1'-0" U/N	
27	1-10-14	SCALE	1/2"=1'-0" U/N	
26	1-10-14	SCALE	1/2"=1'-0" U/N	
25	1-10-14	SCALE	1/2"=1'-0" U/N	
24	1-10-14	SCALE	1/2"=1'-0" U/N	
23	1-10-14	SCALE	1/2"=1'-0" U/N	
22	1-10-14	SCALE	1/2"=1'-0" U/N	
21	1-10-14	SCALE	1/2"=1'-0" U/N	
20	1-10-14	SCALE	1/2"=1'-0" U/N	
19	1-10-14	SCALE	1/2"=1'-0" U/N	
18	1-10-14	SCALE	1/2"=1'-0" U/N	
17	1-10-14	SCALE	1/2"=1'-0" U/N	
16	1-10-14	SCALE	1/2"=1'-0" U/N	
15	1-10-14	SCALE	1/2"=1'-0" U/N	
14	1-10-14	SCALE	1/2"=1'-0" U/N	
13	1-10-14	SCALE	1/2"=1'-0" U/N	
12	1-10-14	SCALE	1/2"=1'-0" U/N	
11	1-10-14	SCALE	1/2"=1'-0" U/N	
10	1-10-14	SCALE	1/2"=1'-0" U/N	
9	1-10-14	SCALE	1/2"=1'-0" U/N	
8	1-10-14	SCALE	1/2"=1'-0" U/N	
7	1-10-14	SCALE	1/2"=1'-0" U/N	
6	1-10-14	SCALE	1/2"=1'-0" U/N	
5	1-10-14	SCALE	1/2"=1'-0" U/N	
4	1-10-14	SCALE	1/2"=1'-0" U/N	
3	1-10-14	SCALE	1/2"=1'-0" U/N	
2	1-10-14	SCALE	1/2"=1'-0" U/N	
1	1-10-14	SCALE	1/2"=1'-0" U/N	

STANLEY J. CAMIC
 NICTET III +478665
 C14028