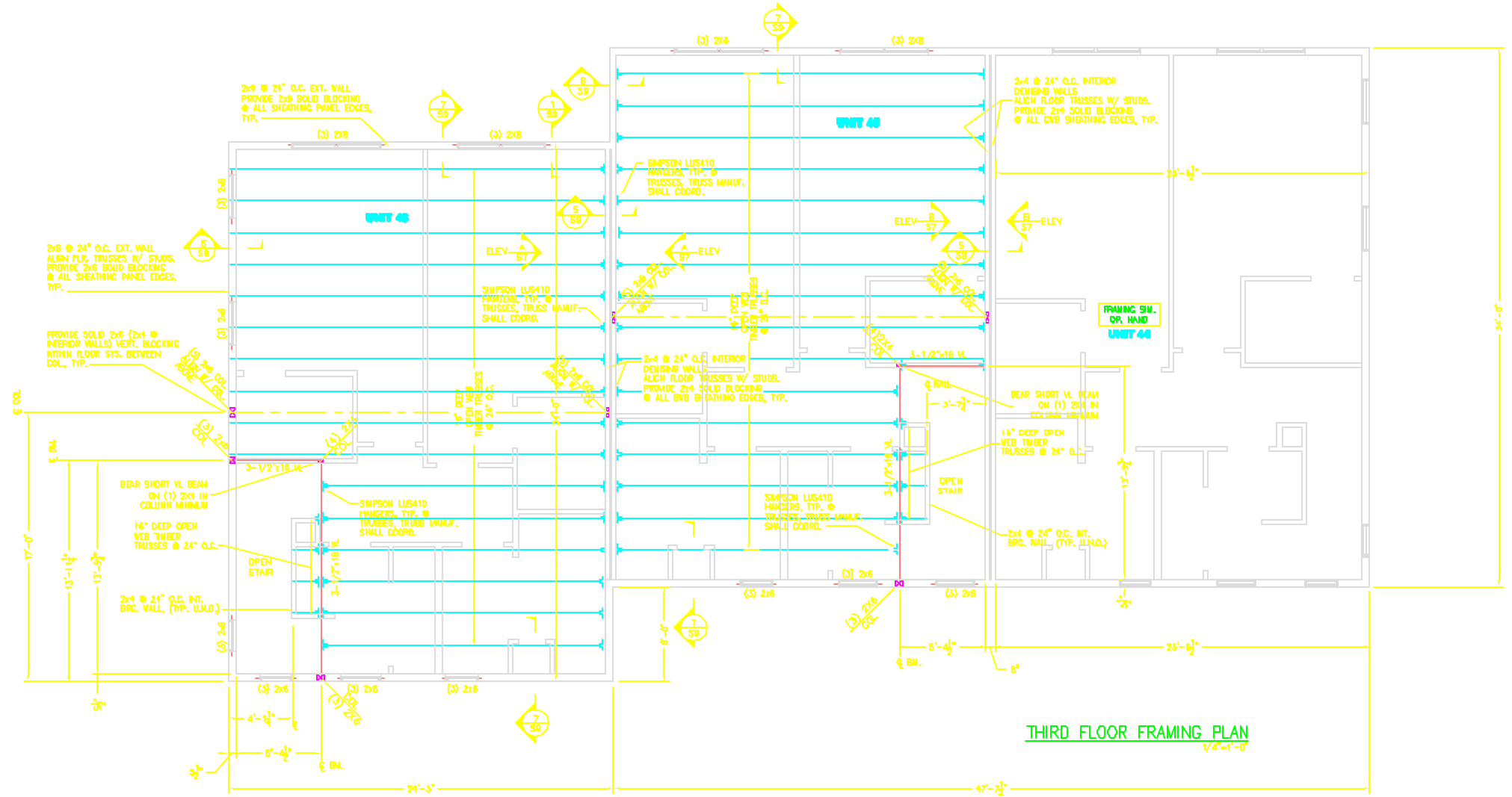
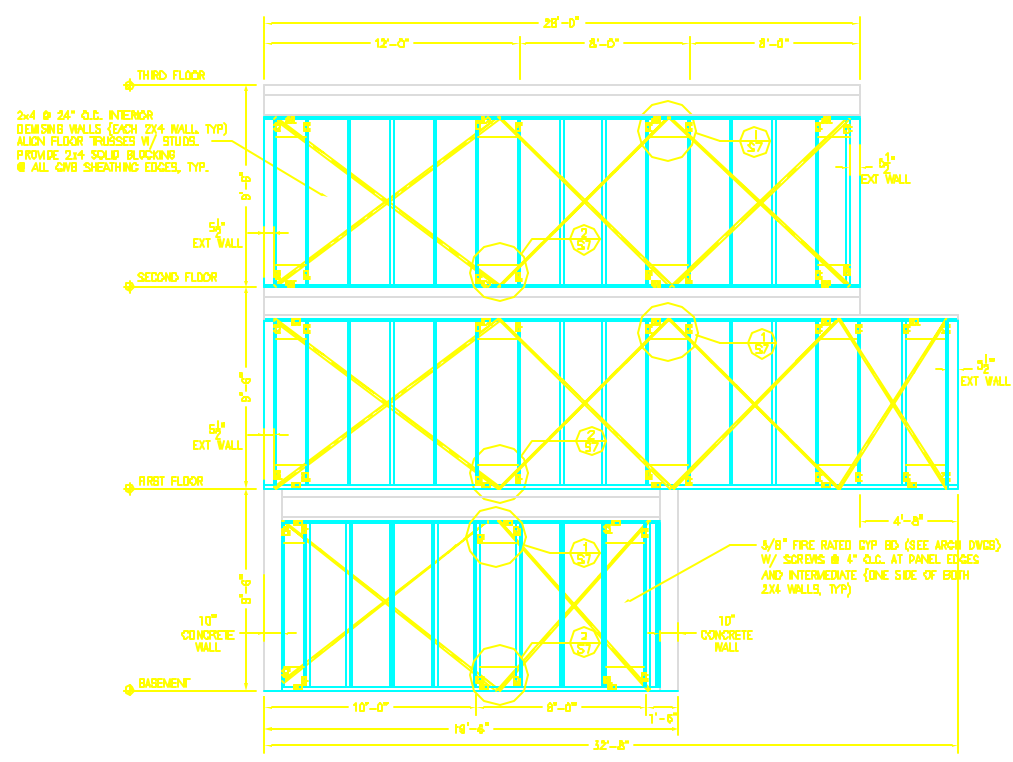




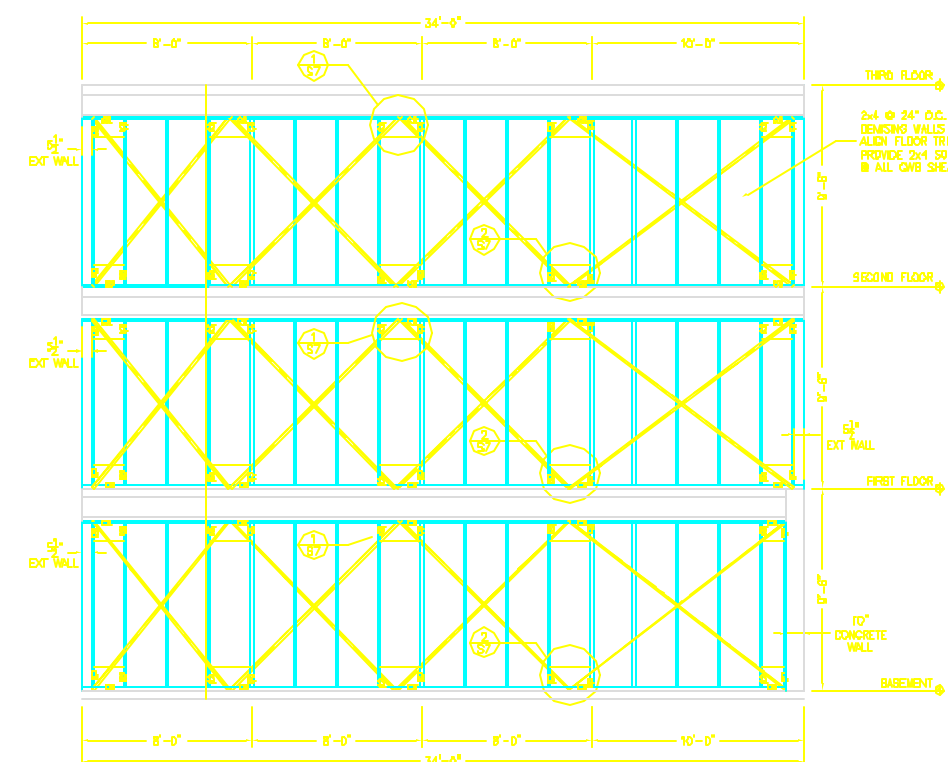
L & L STRUCTURAL
ENGINEERING SERVICES, INC.
 SIX Q. STREET
 SOUTH PORTLAND, MAINE 04106
 PHONE: (207) 767-4830
 FAX: (207) 761-5432
 EMAIL: lleng@maineengineering.com



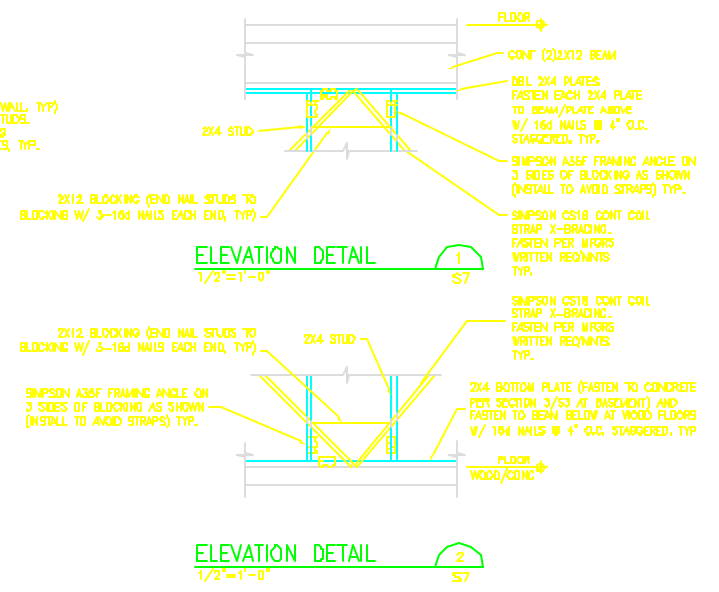
THIRD FLOOR FRAMING PLAN
1/4"=1'-0"



BRACING ELEVATION A
1/4"=1'-0" S5, S6, S7



BRACING ELEVATION B
1/4"=1'-0" S5, S6, S7



ELEVATION DETAIL 1
1/2"=1'-0" S7

ELEVATION DETAIL 2
1/2"=1'-0" S7

LEGEND

BEARING WALL

NOTES

1. SEE GENERAL NOTES ON S1.
2. "VL" INDICATES VERSALAM BEAM MANUFACTURED BY BOBE CABOCADES CORP. OR APPROVED EQUAL.
3. PROVIDE 2x6 JACK STUDS PLUS 2x6 KING STUD AT JAMBS AT BOTH ENDS OF HEADERS. (TYP. UNLD.)

OCEAN RIDGE CONDOMINIUMS
 852 OCEAN AVENUE
 PORTLAND, MAINE
THIRD FLOOR FRAMING PLAN
 UNITS 44, 45 & 46

S7

THIS DOCUMENT IS THE PROPERTY OF L & L STRUCTURAL ENGINEERING SERVICES, INC. AND IS NOT TO BE REPRODUCED OR TRANSMITTED IN ANY FORM OR BY ANY MEANS, ELECTRONIC OR MECHANICAL, INCLUDING PHOTOCOPYING, RECORDING, OR BY ANY INFORMATION STORAGE AND RETRIEVAL SYSTEM. WITHOUT THE WRITTEN PERMISSION OF L & L STRUCTURAL ENGINEERING SERVICES, INC.

Designed by: JLL	Checked by: JLL
Drawn by: JLL	Reviewed by: JLL
Created by: JLL	Scale:
Date: OCTOBER 5, 2024	Plot Date:
Project # 24035	