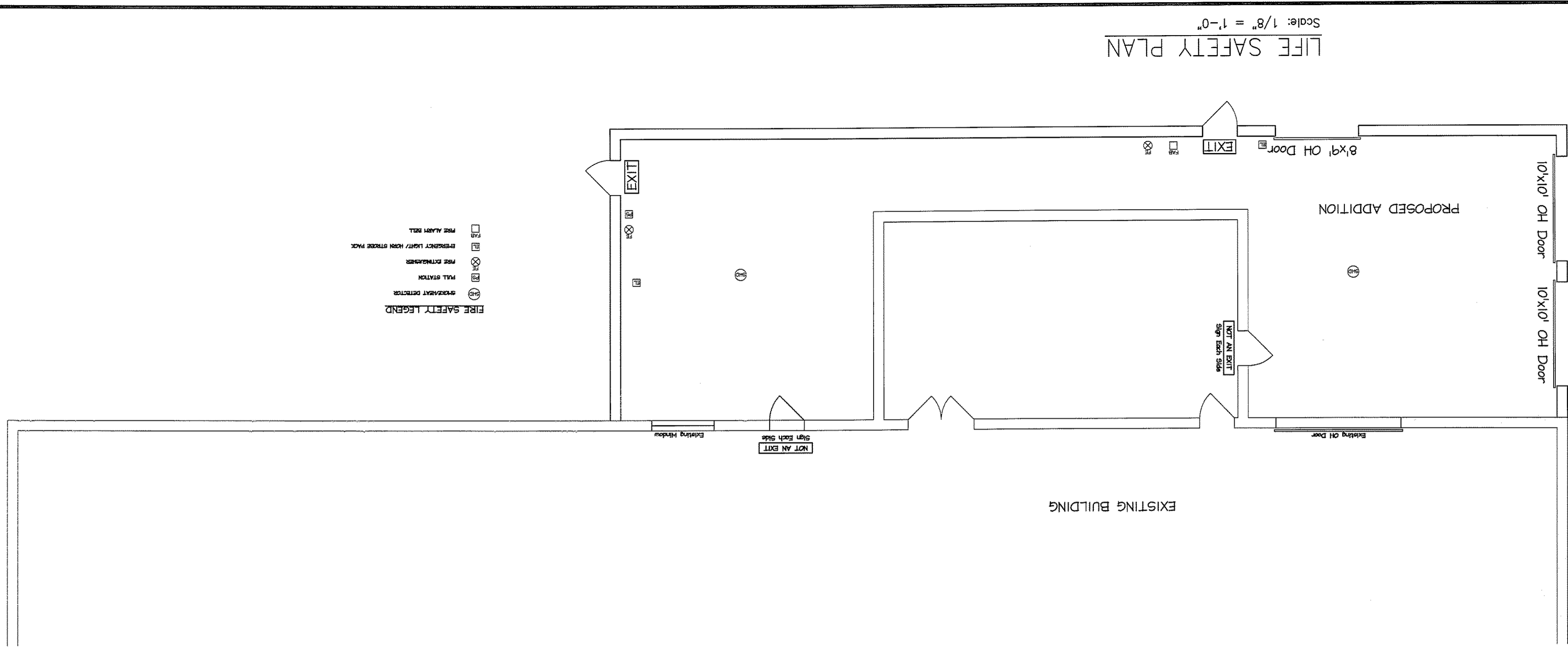
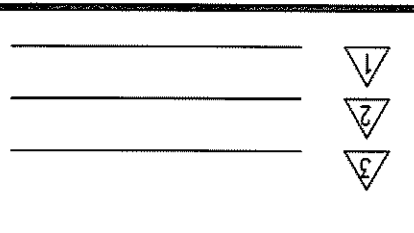
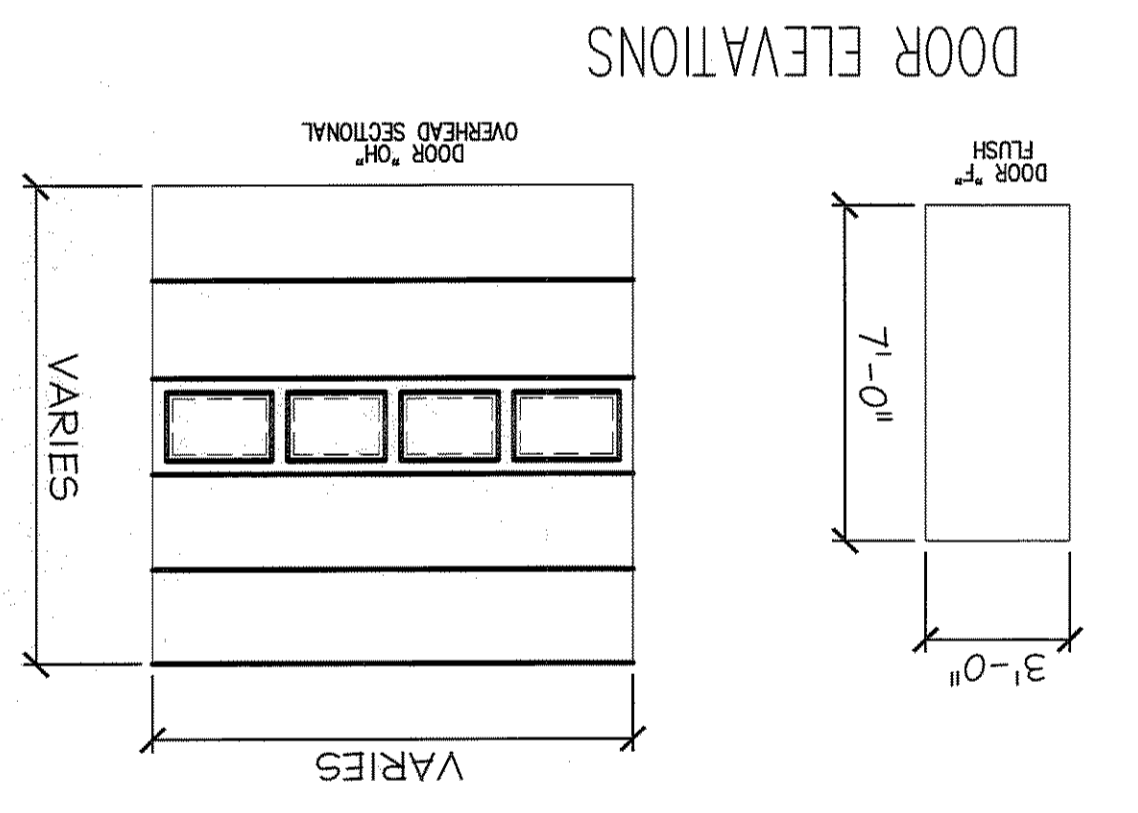


MAILED	STRUCTURAL ENGINEERS, P.A. 90 Bridge Street, Suite 252 Westbrook, Maine 04092 207.639.0980	MOODY'S BUILDING ADDITION PORTLAND, MAINE
DATE:	1/15/16	SCALE: AS SHOWN
DRYING NUMBER:	PROJ NO. 2015-283	SCALE: AS SHOWN
TITLE: LIFE SAFETY PLAN & NOTES		

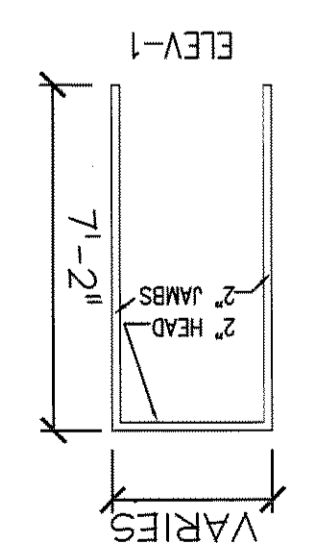
FOR PERMIT - 2/19/16



LIFE SAFETY PLAN
Scale: 1/8" = 1'-0"



DOOR ELEVATIONS



FRAME ELEVATION

INSTALL SAFETY GLASS AS REQUIRED BY CODE
ALL HOLLOW METAL FRAMES TO BE HD WELDED FRAMES (FLUSH FRAMES)
METAL INSULATED DOORS TO BE 1" THICK
EXTERIOR PERIMETER DOORS TO BE METAL INSULATED
& HAVE A MIN. "U" FACTOR OF 0.10
OVERHEAD DOORS SHALL BE CONSTRUCTED OF 3 LAYERS
25ga EXTERIOR, EXTRUDED POLYSTYRENE (R-VALUE = 17.05
AND 25ga INTERIOR

NOTE - ALL 3070 DOORS TO HAVE LEVER HANDLES

DOOR #	SIZE	LABEL	DOOR		FRAME		REMARKS
			MTL	INS.	MTL	ELEV	
101	10'x10'H		OH	INS.	OH	INS.	SECTIONAL OVERHEAD ELECTRIC OPENER
102	10'x10'H		OH	INS.	OH	INS.	SECTIONAL OVERHEAD ELECTRIC OPENER
103	8'x4'H		OH	INS.	OH	INS.	SECTIONAL OVERHEAD ELECTRIC OPENER
104	3070		F	INS.	HM		PANIC HARDWARE & EXT. PULL
105	3070		F	INS.	HM		PANIC HARDWARE & EXT. PULL

DOOR SCHEDULE

2003 INTERNATIONAL BUILDING CODE (IBC)
2009 NFPA 101 LIFE SAFETY CODE
USE AND OCCUPANCY CLASSIFICATION
USE GROUP: B - BUSINESS (OFFICE AREA):
720 SF - 2ND STY
1 ST, 9', 1,393 SF
TOTAL BUILDING AREA: (MOTOR VEHICLE REPAIR GARAGE)
2 ST, 20', 18,362 SF
TYPE OF CONSTRUCTION: SECTION 602
CONSTRUCTION TYPE: 3B PROTECTED
GENERAL BUILDING HEIGHTS AND AREAS SECTION 503
USE GROUP: B - BUSINESS (OFFICE AREA):
4 ST, 55', 19,000 SF
USE GROUP: B - BUSINESS (OFFICE AREA):
CONSTRUCTION TYPE: TYPE 3B
USE GROUP: 5-1 - MODERATE HAZARD STORAGE (MOTOR VEHICLE REPAIR GARAGE):
CONSTRUCTION TYPE: TYPE 3B
3 ST, 44', 17,500 SF
SECTION 506 AREA MODIFICATIONS:
506.2 STREET FRONTAGE INCREASE:
(100% FRONTAGE)-(25%) = 75%
= 150% ALLOWABLE INCREASE
B-BUSINESS:
(19,000 SF)(75%)(2)+(19,000 SF) = 47,500 SF MAX AREA
5-1 - MODERATE HAZARD STORAGE: (17,500 SF)(75%)(2)+(17,500 SF) = 43,750 SF MAX AREA
SECTION 507 - UNLIMITED AREA BUILDINGS:
507.3 TWO STY EQUIPPED W/ SPRINKLER = UNLIMITED AREA.
FIRE RATINGS:
EXTERIOR WALLS: 0 HOUR
ROOF CONSTRUCTION: 0 HOUR
NONBEARING WALLS: 0 HOUR
BEARING WALLS: 2 HOUR
CORRIDORS: 0 HOUR
STORAGE (+100 SF): 0 HOUR
MECHANICAL RMS: 1 HOUR
302.3.1 NONSEPARATED USES
FIRE SEPARATION ARE NOT REQUIRED BETWEEN USES AS THE HEIGHT AND AREA LIMITATIONS
FOR EACH OF THE OCCUPANCIES APPLIES TO THE ENTIRE BUILDING
903.2.2 GROUP 5-1
AN AUTOMATIC SPRINKLER SYSTEM REQUIRED IF THE FIRE AREA CONTAINING
A GROUP 5-1 OCCUPANCY EXCEEDS 12,000 SF
SPRINKLER SYSTEM IS REQUIRED AS THE FIRE AREA CONTAINING
THE GROUP 5-1 OCCUPANCY IS GREATER THAN 12,000 SF
MEANS OF EGRESS
TABLE 1004.1.2 OCCUPANT LOAD:
BUSINESS: 100 GROSS 1ST FLOOR: (1,393 SF) / 100 SF PER OCCUPANT = 14 OCCUPANTS
2ND FLOOR: (720 SF) / 100 SF PER OCCUPANT = 7 OCCUPANTS
STORAGE: 300 GROSS 1ST FLOOR: (16,519 SF) / 300 SF PER OCCUPANT = 55 OCCUPANTS
1018.1 MINIMUM NUMBER OF EXITS
1 - 500; 2 EXITS
1014.1 SPACES WITH ONE MEANS OF EGRESS
BUSINESS: MAXIMUM 50 OCCUPANT LOAD
STORAGE: MAXIMUM 30 OCCUPANT LOAD
1018.2 - ONE MEANS OF EGRESS FROM SECOND FLOOR ACCEPTABLE
1009.1 STAIRWAY WIDTH
EXCEPTION #: 36" IF OCCUPANT LOAD IS LESS THAN 50 OCCUPANTS
1005.1 EGRESS WIDTH PER OCCUPANT (WITH SPRINKLER SYSTEM)
DOORS & CORRIDORS: 0.15" PER OCCUPANT
STAIRWAYS: 0.2" PER OCCUPANT
CODE REVIEW

DOORS & WINDOWS:
HOLLOW METAL FRAMES TO BE FLUSH FRAMES;
INSTALL SAFETY GLASS AS REQUIRED BY CODE
LOCKSETS SHALL BE SARGENT 10LUNE
HD. CYLINDRICAL KEY-IN-LEVER W/ 26D FINISH
HINGES: (3) 4"x4" HAGER FULL MORTISE #700
PLAIN BEARING STEEL
STOPS (ALL DOORS): HAGER #252F CAST STOP
CLOSER: NORTON #1605 SURFACE CLOSER
EXTERIOR DOORS TO BE METAL INSULATED
DOOR HARDWARE:
LOCKSETS SHALL BE SARGENT 10LUNE
HD. CYLINDRICAL KEY-IN-LEVER W/ 26D FINISH
HINGES: (3) 4"x4" HAGER FULL MORTISE #700
PLAIN BEARING STEEL
STOPS (ALL DOORS): HAGER #252F CAST STOP
CLOSER: NORTON #1605 SURFACE CLOSER