

NOTE:
SEE RFDS FOR RRH
FREQUENCY AND
MODEL NUMBER

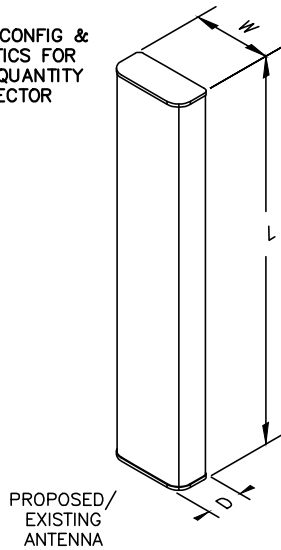
PROPOSED RRH
REFER TO THE FINAL RFDS
AND CHART FOR QUANTITY,
MODEL AND DIMENSIONS

	L	W	D
RRUS - 12	20.4"	18.5"	7.5"
LTE - A2	16.4"	15.2"	3.4"

NOTE:
MOUNT PER MANUFACTURER'S
SPECIFICATIONS.

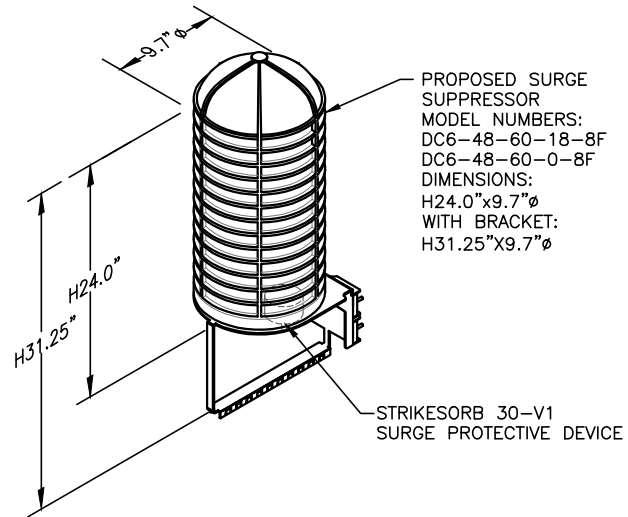
RRH DETAIL 1
SCALE: N.T.S. A-3

NOTES:
1. REFER TO RF CONFIG &
SECTOR SCHEMATICS FOR
MODEL, TYPE & QUANTITY
REQUIRED PER SECTOR



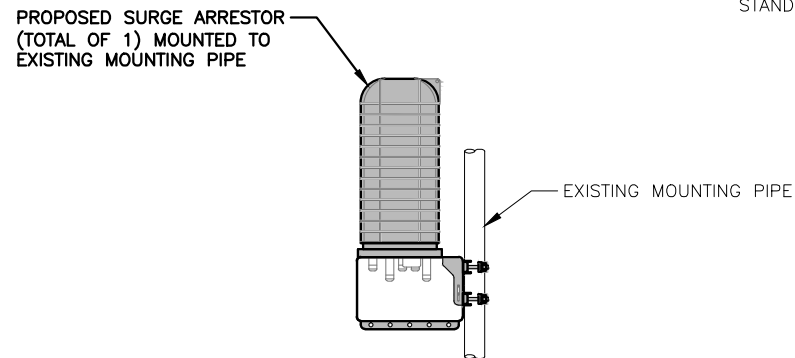
TECHNOLOGY	ANTENNA MODEL	L	W	D
UMTS DB	7770	55.0"	11.0"	5.0"
LTE 700 BC/AWS	P65-17-XLH-RR	96.0"	12.0"	6.0"
LTE 700 BC/AWS	SBNH-1D6565C	96.4"	11.9"	7.1"
LTE 700 BC/AWS	AM-X-CD-16-65-001-RET	72.0"	11.8"	5.9"
LTE PCS	HPA-65R-BUU-H8	92.4"	14.8"	7.4"

ANTENNA DETAIL 3
SCALE: N.T.S. A-3

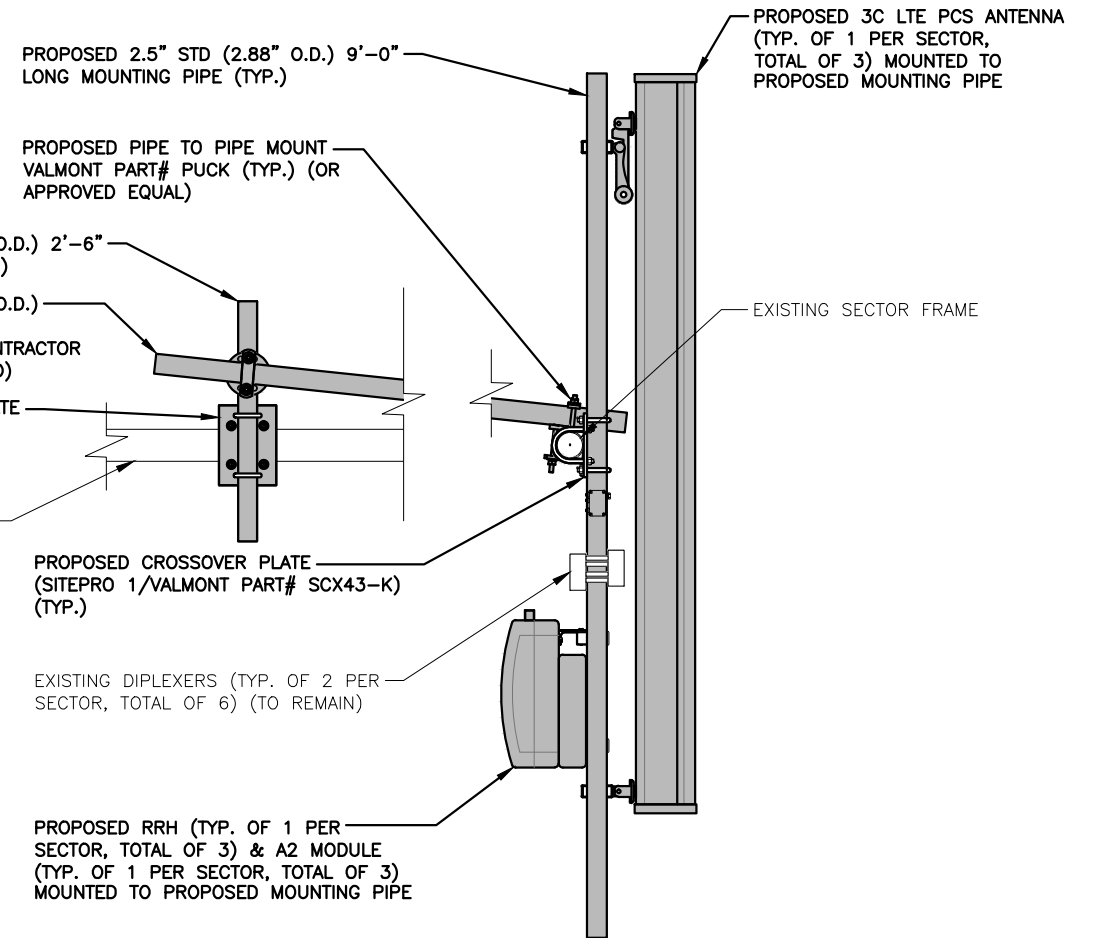


NOTE:
MOUNT PER MANUFACTURER'S SPECIFICATIONS.

DC SURGE ARRESTOR DETAIL 2
SCALE: N.T.S. A-3



PROPOSED SURGE ARRESTOR MOUNTING DETAIL 4
SCALE: N.T.S. A-3



PROPOSED LTE 3C ANTENNA & RRH MOUNTING DETAIL 5
SCALE: N.T.S. A-3

NOTE:
ALL ANTENNAS AND LINES TO BE
INSTALLED IN ACCORDANCE WITH
STRUCTURAL ANALYSIS PROVIDED
BY CROWN CASTLE AND FINAL
AT&T RF DATA SHEET.

NOTE:
REFER TO THE FINAL RF DATA
SHEET FOR FINAL ANTENNA
SETTINGS.

Hudson Design Group
1600 OSGOOD STREET
BUILDING 20 NORTH, SUITE 309D
N. ANDOVER, MA 01845
TEL: (978) 557-5553
FAX: (978) 336-5586

EMPIRE telecom
16 ESQUIRE ROAD
BILLERICA, MA 01862
TEL: (978) 608-8400

SITE NUMBER: ME5022
SITE NAME: EAST DEERING
517 PRESUMPCOT STREET
PORTLAND, ME 04103
CUMBERLAND COUNTY

at&t
550 COCHITUATE ROAD
FRAMINGHAM, MA 01701

NO.	DATE	REVISIONS	BY	CHK	APP'D	JOB NUMBER	DRAWING NUMBER	REV
1	10/05/16	ISSUED FOR CONSTRUCTION	SO	JC	DC	ME5022	A-3	1
0	09/23/16	ISSUED FOR REVIEW	FM	JC	DC			

SCALE: AS SHOWN DESIGNED BY: JC DRAWN BY: FM

AT&T
DETAILS
(LTE 3C)

STATE OF MAINE
Derek J. Creaser
Professional Engineer
No. 12752