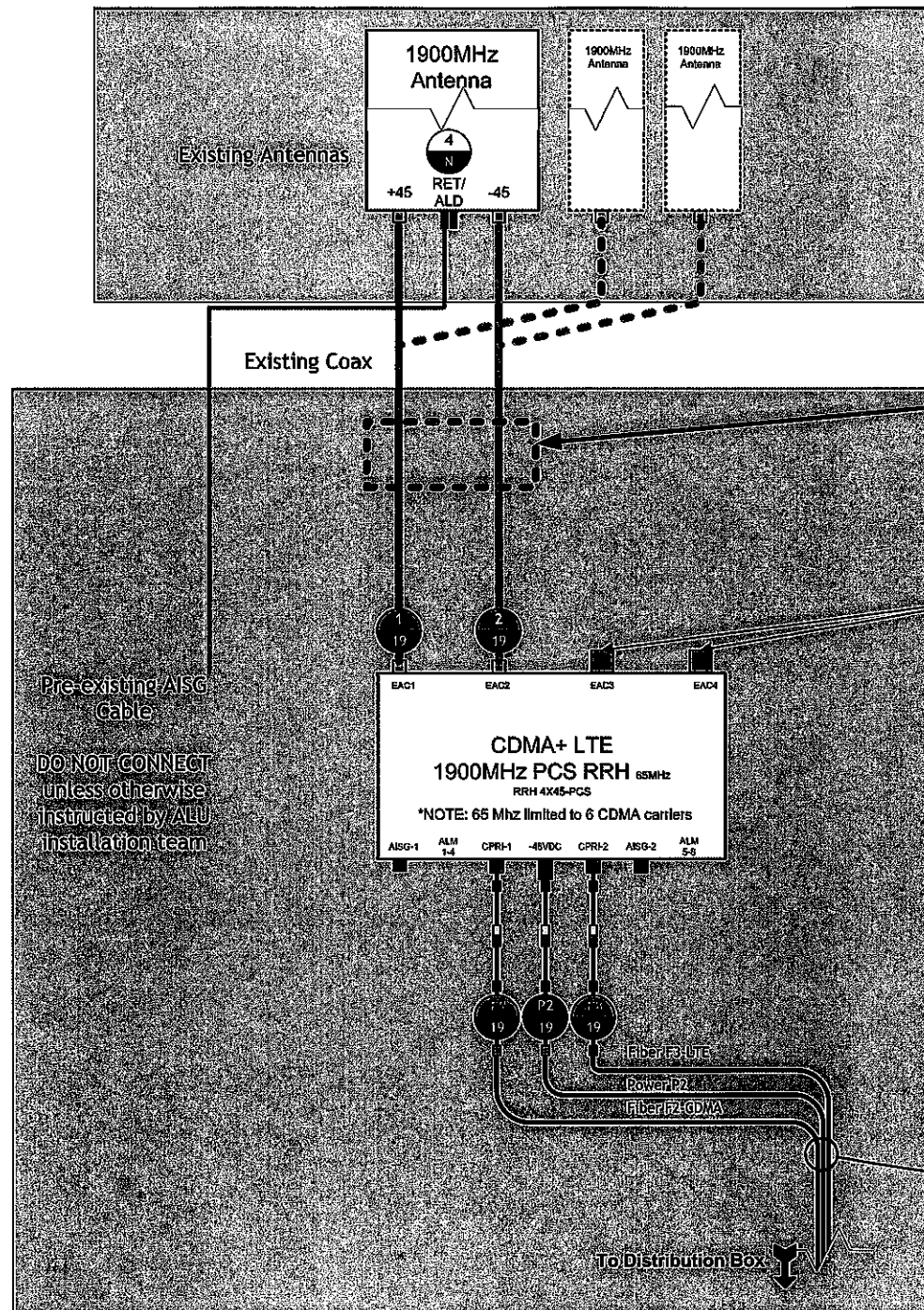


SCENARIO 135_v2.5



1 TOWER TOP BLOCK DIAGRAM
BD2 SCALE: N.T.S.

2 GROUND MOUNT BLOCK DIAGRAM
BD2 SCALE: N.T.S.
Dust cap

There may be existing Splitters, Diplexers etc...

PROPOSED FIBER/DC POWER IN 1" SEAL TIGHT (TOTAL OF 6) EACH SUPPORT AT 18" O.C. AND AT HORIZONTAL/VERTICAL TRANSITIONS

Pre-existing AISG Cable
DO NOT CONNECT unless otherwise instructed by ALU installation team

IMPORTANT:
GENERAL CONTRACTOR/TOWER CREW SHALL VERIFY THAT THE LATEST NETWORK VISION RAN CONNECTION DIAGRAMS ARE USED FOR EQUIPMENT INSTALLATION.

IMPORTANT:
VELCRO STRAPS ONLY MAY BE USED ON FIBER. CABLE TIES OR TIE WRAP MUST NOT BE USED ON FIBER.

0
0
0
0
0
0

COAX
FIBER
POWER
NOTES

0
0

FREQ

3
BD2

DIAGRAM LEGEND
SCALE: N.T.S.

Sprint
VISION
NETWORK VISION RAN/MTS LAUNCH
1 INTERNATIONAL BLVD, SUITE 600
MAHWAH, NJ 07495
TEL: (800) 357-7641

CROWN CASTLE
CROWN CASTLE
500 WEST CUMMINGS PARK, SUITE 3600
WOBURN, MA 01801

Hudson Design Group, Inc.
1600 OSGOOD STREET
BUILDING 20 NORTH, SUITE 3090
N. ANDOVER, MA 01845
TEL: (978) 557-5553
FAX: (978) 336-5586

STATE OF MAINE
Professional Engineer
Daniel P. Hamm

CHECKED BY: JX

APPROVED BY: DPH

SUBMITTALS			
REV.	DATE	DESCRIPTION	BY
2	07/31/13	FOR CONSTRUCTION	SF
1	03/04/13	ISSUED FOR REVIEW	SF

SITE NUMBER:
NM03XC068
SITE NAME:
PORTLAND NORTH
SITE ADDRESS:
527 PRESUMPCOT STREET
PORTLAND, ME 04103

SHEET TITLE:
WIRING DIAGRAM

SHEET NUMBER:
A-5