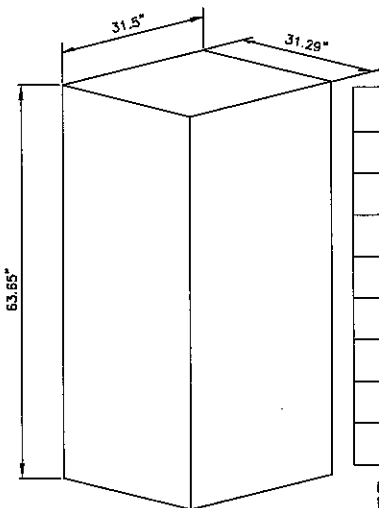


**ALCATEL-LUCENT 9928/9927 OUTDOOR CABINET**

SCALE: N.T.S.

1  
A-3



EMERSON NEXT GEN BATTERY CABINET SPECIFICATIONS

HEIGHT	63.65"
WIDTH	31.5"
DEPTH	31.29"
SHIPPING WEIGHT	600 lbs
LIFT WEIGHT	540 lbs
TOTAL WEIGHT W/ BATTERIES	2640 lbs
BATTERY WEIGHT	105 lbs

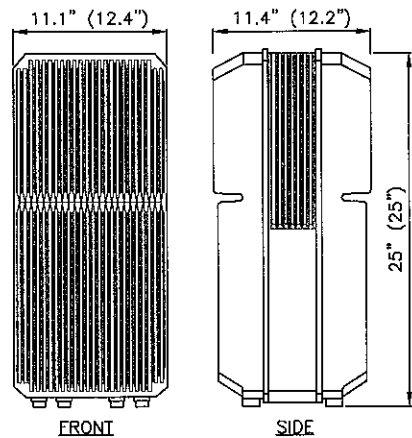
\*DO NOT LIFT WITH BATTERIES IN CABINET

NOTE: EQUIPMENT SHALL BE ANCHORED PER MANUFACTURERS SPECIFICATIONS.

**BATTERY BACK-UP CABINET**

SCALE: N.T.S.

2  
A-3



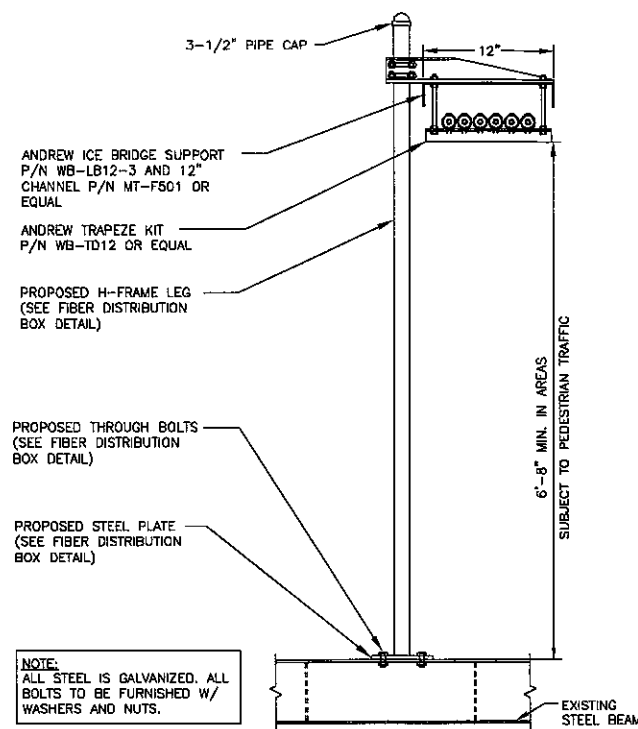
DIMENSIONS WITHIN PARENTHESES ARE FOR THE OPTIONAL SOLAR SHIELD

1900MHz RRH WEIGHT: 60 LBS

**1900MHz RRH**

SCALE: N.T.S.

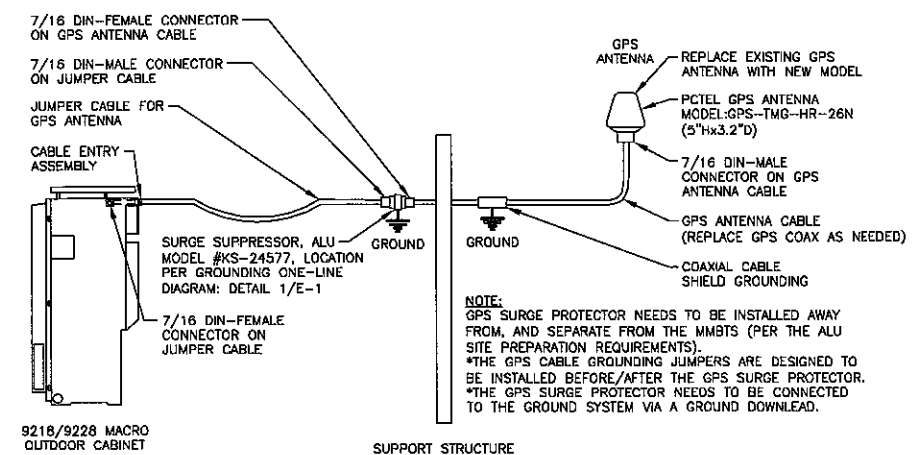
3  
A-3



**COAX ICE BRIDGE DETAIL**

SCALE: N.T.S.

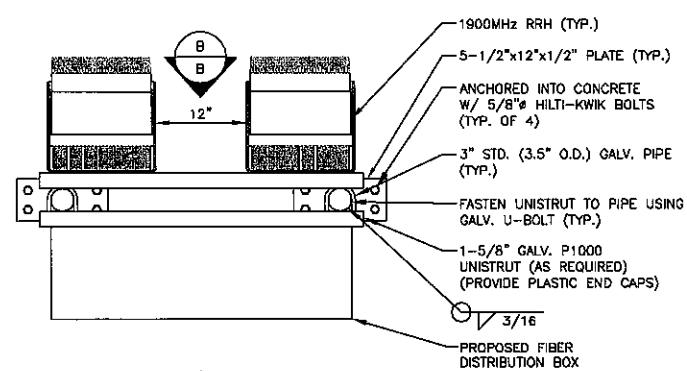
4  
A-3



**GPS ANTENNA DETAIL**

SCALE: N.T.S.

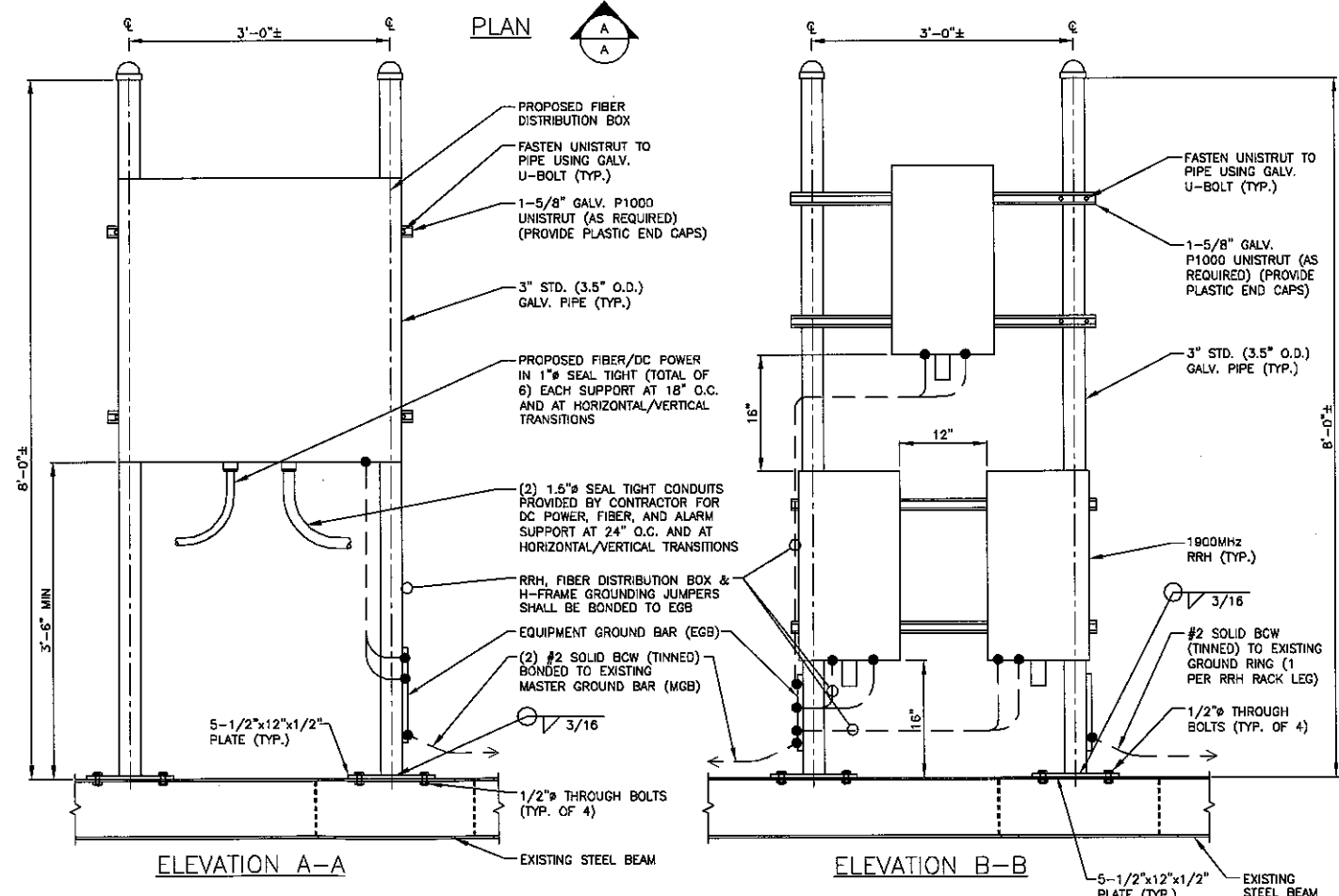
5  
A-3



NOTE: EQUIPMENT SHALL BE ANCHORED PER MANUFACTURERS SPECIFICATIONS.

FIBER DISTRIBUTION BOX SPECIFICATIONS

HEIGHT	39"
WIDTH	39"
DEPTH	12"



**ELEVATION A-A**

**ELEVATION B-B**

**FIBER DISTRIBUTION BOX**

SCALE: N.T.S.

6  
A-3

**Sprint**  
VISION  
NETWORK VISION MMIBS LAUNCH  
1 INTERNATIONAL BLVD. SUITE 800  
MAHWAH, NJ 07495  
TEL: (800) 357-7641

**CROWN CASTLE**  
CROWN CASTLE  
500 WEST CLUMMINGS PARK, SUITE 3600  
WOBURN, MA 01801

**Hudson Design Group**  
1600 OSGOOD STREET  
BUILDING 20 NORTH, SUITE 3090  
N. ANDOVER, MA 01845  
TEL: (978) 557-5553  
FAX: (978) 336-5586

STATE OF MAINE  
PROFESSIONAL ENGINEER  
DANIEL P. HAMM

CHECKED BY: JX

APPROVED BY: DPH

SUBMITTALS

REV.	DATE	DESCRIPTION	BY
2	07/31/13	FOR CONSTRUCTION	SF
1	03/04/13	ISSUED FOR REVIEW	SF

SITE NUMBER:  
NM03XC068  
SITE NAME:  
PORTLAND NORTH  
SITE ADDRESS:  
527 PRESUMPSCOT STREET  
PORTLAND, ME 04103

SHEET TITLE  
DETAILS

SHEET NUMBER  
A-3