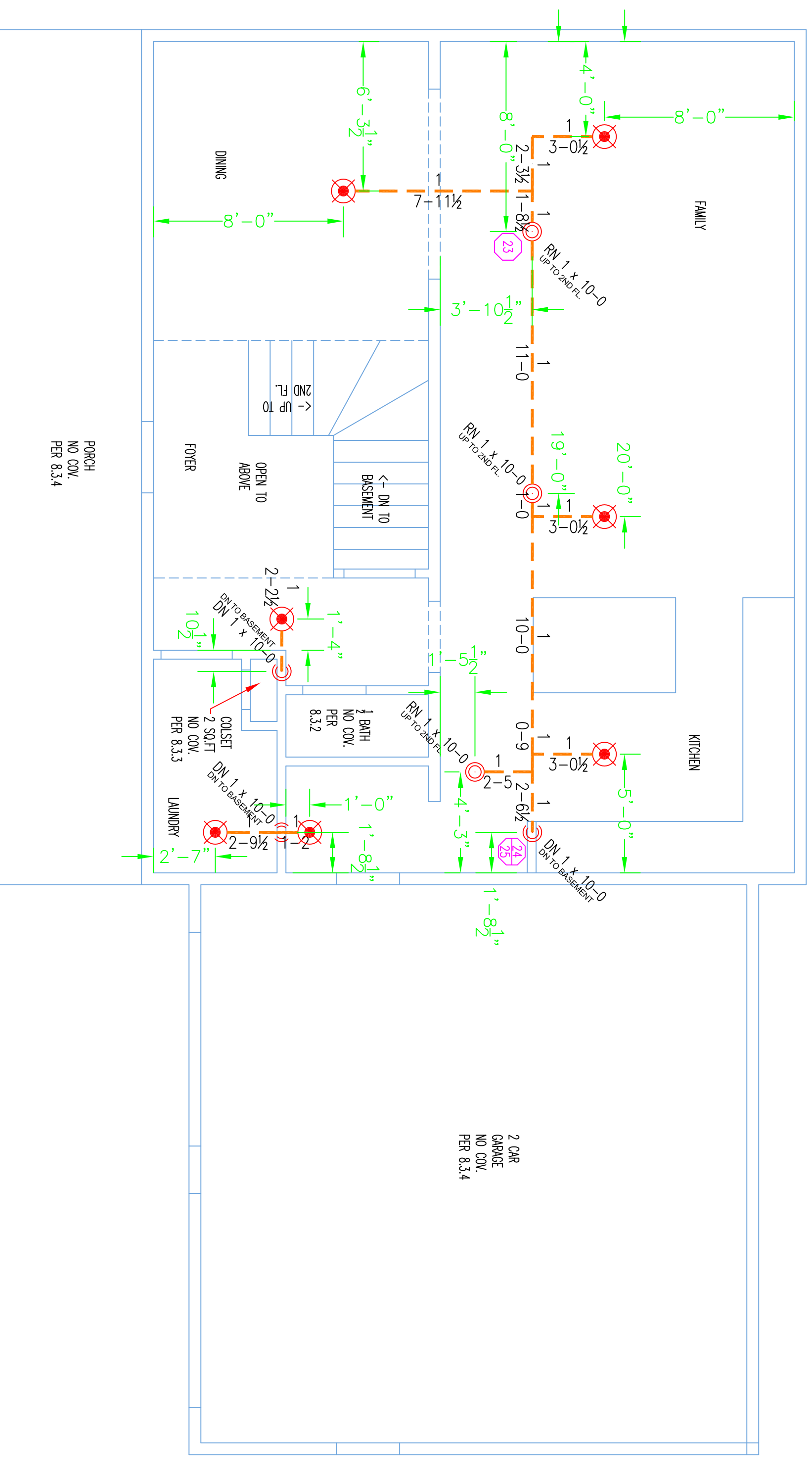
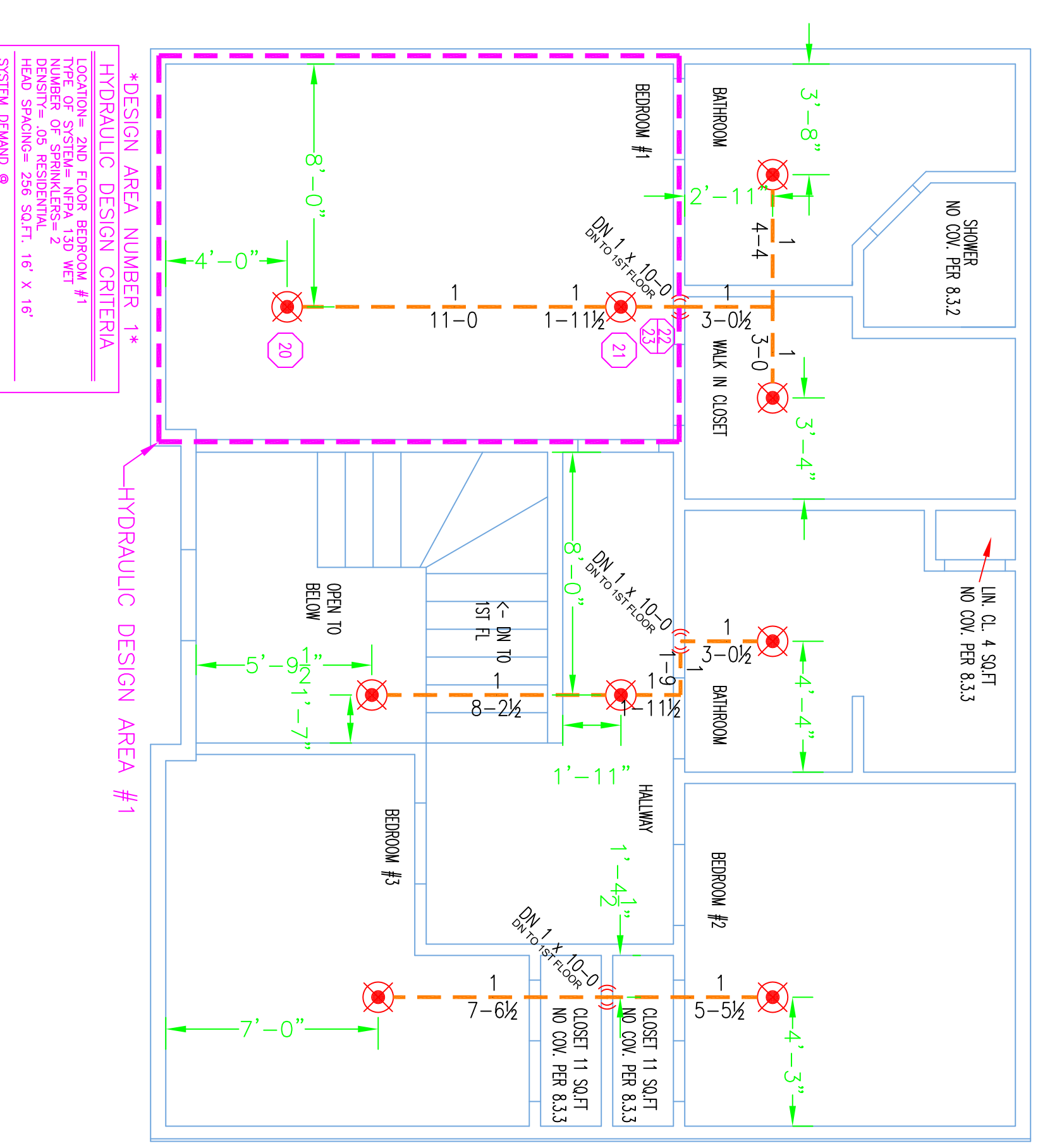


EXCEPTIONS FOR 13D 2016ed. SYSTEM

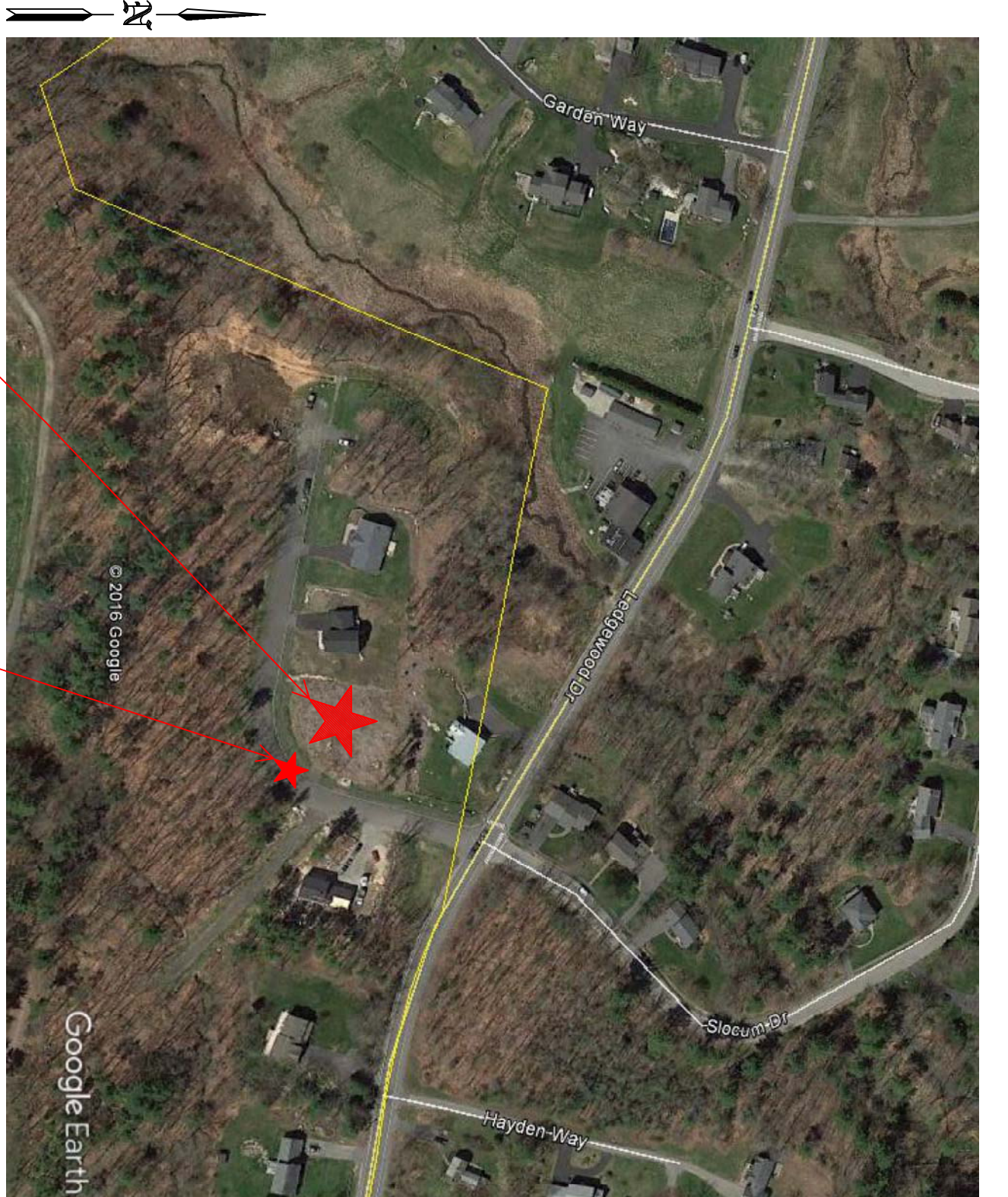
- SPRINKLERS SHALL BE INSTALLED IN ALL AREAS EXCEPT AS NOTED BELOW
- (13D) 8.2.1 SPRINKLERS SHALL NOT BE REQUIRED IN WALKWAYS
- (13D) 8.2.3 SPRINKLERS SHALL NOT BE REQUIRED IN CLOSET AREAS, LINEN CLOSETS, AND PARTIES WITHIN THE DWELLING UNITS
- (13D) 8.2.4 SPRINKLERS SHALL NOT BE REQUIRED IN UNOCCUPIED AREAS
- (13D) 8.2.5 SPRINKLERS SHALL NOT BE REQUIRED IN ATTICS
- (13D) 8.2.6 SPRINKLERS SHALL NOT BE REQUIRED IN PENETRATION POINTS
- (13D) 8.2.7 SPRINKLERS SHALL NOT BE REQUIRED IN PENETRATION POINTS
- (13D) 8.2.8 SPRINKLERS SHALL NOT BE REQUIRED IN GARAGES, OPEN UNLESS REQUIRED BY THE AUTHORITY HAVING JURISDICTION
- (13D) 8.2.9 SPRINKLERS SHALL NOT BE REQUIRED IN GARAGES, OPEN UNLESS REQUIRED BY THE AUTHORITY HAVING JURISDICTION
- (13D) 8.2.10 SPRINKLERS SHALL NOT BE REQUIRED IN GARAGES, OPEN UNLESS REQUIRED BY THE AUTHORITY HAVING JURISDICTION
- (13D) 8.2.11 SPRINKLERS SHALL NOT BE REQUIRED IN GARAGES, OPEN UNLESS REQUIRED BY THE AUTHORITY HAVING JURISDICTION
- (13D) 8.2.12 SPRINKLERS SHALL NOT BE REQUIRED IN GARAGES, OPEN UNLESS REQUIRED BY THE AUTHORITY HAVING JURISDICTION
- (13D) 8.2.13 SPRINKLERS SHALL NOT BE REQUIRED IN GARAGES, OPEN UNLESS REQUIRED BY THE AUTHORITY HAVING JURISDICTION
- (13D) 8.2.14 SPRINKLERS SHALL NOT BE REQUIRED IN GARAGES, OPEN UNLESS REQUIRED BY THE AUTHORITY HAVING JURISDICTION
- (13D) 8.2.15 SPRINKLERS SHALL NOT BE REQUIRED IN GARAGES, OPEN UNLESS REQUIRED BY THE AUTHORITY HAVING JURISDICTION
- (13D) 8.2.16 SPRINKLERS SHALL NOT BE REQUIRED IN GARAGES, OPEN UNLESS REQUIRED BY THE AUTHORITY HAVING JURISDICTION
- (13D) 8.2.17 SPRINKLERS SHALL NOT BE REQUIRED IN GARAGES, OPEN UNLESS REQUIRED BY THE AUTHORITY HAVING JURISDICTION
- (13D) 8.2.18 SPRINKLERS SHALL NOT BE REQUIRED IN GARAGES, OPEN UNLESS REQUIRED BY THE AUTHORITY HAVING JURISDICTION
- (13D) 8.2.19 SPRINKLERS SHALL NOT BE REQUIRED IN GARAGES, OPEN UNLESS REQUIRED BY THE AUTHORITY HAVING JURISDICTION
- (13D) 8.2.20 SPRINKLERS SHALL NOT BE REQUIRED IN GARAGES, OPEN UNLESS REQUIRED BY THE AUTHORITY HAVING JURISDICTION
- (13D) 8.2.21 SPRINKLERS SHALL NOT BE REQUIRED IN GARAGES, OPEN UNLESS REQUIRED BY THE AUTHORITY HAVING JURISDICTION
- (13D) 8.2.22 SPRINKLERS SHALL NOT BE REQUIRED IN GARAGES, OPEN UNLESS REQUIRED BY THE AUTHORITY HAVING JURISDICTION
- (13D) 8.2.23 SPRINKLERS SHALL NOT BE REQUIRED IN GARAGES, OPEN UNLESS REQUIRED BY THE AUTHORITY HAVING JURISDICTION
- (13D) 8.2.24 SPRINKLERS SHALL NOT BE REQUIRED IN GARAGES, OPEN UNLESS REQUIRED BY THE AUTHORITY HAVING JURISDICTION
- (13D) 8.2.25 SPRINKLERS SHALL NOT BE REQUIRED IN GARAGES, OPEN UNLESS REQUIRED BY THE AUTHORITY HAVING JURISDICTION
- (13D) 8.2.26 SPRINKLERS SHALL NOT BE REQUIRED IN GARAGES, OPEN UNLESS REQUIRED BY THE AUTHORITY HAVING JURISDICTION
- (13D) 8.2.27 SPRINKLERS SHALL NOT BE REQUIRED IN GARAGES, OPEN UNLESS REQUIRED BY THE AUTHORITY HAVING JURISDICTION
- (13D) 8.2.28 SPRINKLERS SHALL NOT BE REQUIRED IN GARAGES, OPEN UNLESS REQUIRED BY THE AUTHORITY HAVING JURISDICTION
- (13D) 8.2.29 SPRINKLERS SHALL NOT BE REQUIRED IN GARAGES, OPEN UNLESS REQUIRED BY THE AUTHORITY HAVING JURISDICTION
- (13D) 8.2.30 SPRINKLERS SHALL NOT BE REQUIRED IN GARAGES, OPEN UNLESS REQUIRED BY THE AUTHORITY HAVING JURISDICTION
- (13D) 8.2.31 SPRINKLERS SHALL NOT BE REQUIRED IN GARAGES, OPEN UNLESS REQUIRED BY THE AUTHORITY HAVING JURISDICTION
- (13D) 8.2.32 SPRINKLERS SHALL NOT BE REQUIRED IN GARAGES, OPEN UNLESS REQUIRED BY THE AUTHORITY HAVING JURISDICTION
- (13D) 8.2.33 SPRINKLERS SHALL NOT BE REQUIRED IN GARAGES, OPEN UNLESS REQUIRED BY THE AUTHORITY HAVING JURISDICTION
- (13D) 8.2.34 SPRINKLERS SHALL NOT BE REQUIRED IN GARAGES, OPEN UNLESS REQUIRED BY THE AUTHORITY HAVING JURISDICTION
- (13D) 8.2.35 SPRINKLERS SHALL NOT BE REQUIRED IN GARAGES, OPEN UNLESS REQUIRED BY THE AUTHORITY HAVING JURISDICTION
- (13D) 8.2.36 SPRINKLERS SHALL NOT BE REQUIRED IN GARAGES, OPEN UNLESS REQUIRED BY THE AUTHORITY HAVING JURISDICTION
- (13D) 8.2.37 SPRINKLERS SHALL NOT BE REQUIRED IN GARAGES, OPEN UNLESS REQUIRED BY THE AUTHORITY HAVING JURISDICTION
- (13D) 8.2.38 SPRINKLERS SHALL NOT BE REQUIRED IN GARAGES, OPEN UNLESS REQUIRED BY THE AUTHORITY HAVING JURISDICTION
- (13D) 8.2.39 SPRINKLERS SHALL NOT BE REQUIRED IN GARAGES, OPEN UNLESS REQUIRED BY THE AUTHORITY HAVING JURISDICTION
- (13D) 8.2.40 SPRINKLERS SHALL NOT BE REQUIRED IN GARAGES, OPEN UNLESS REQUIRED BY THE AUTHORITY HAVING JURISDICTION
- (13D) 8.2.41 SPRINKLERS SHALL NOT BE REQUIRED IN GARAGES, OPEN UNLESS REQUIRED BY THE AUTHORITY HAVING JURISDICTION
- (13D) 8.2.42 SPRINKLERS SHALL NOT BE REQUIRED IN GARAGES, OPEN UNLESS REQUIRED BY THE AUTHORITY HAVING JURISDICTION
- (13D) 8.2.43 SPRINKLERS SHALL NOT BE REQUIRED IN GARAGES, OPEN UNLESS REQUIRED BY THE AUTHORITY HAVING JURISDICTION
- (13D) 8.2.44 SPRINKLERS SHALL NOT BE REQUIRED IN GARAGES, OPEN UNLESS REQUIRED BY THE AUTHORITY HAVING JURISDICTION
- (13D) 8.2.45 SPRINKLERS SHALL NOT BE REQUIRED IN GARAGES, OPEN UNLESS REQUIRED BY THE AUTHORITY HAVING JURISDICTION
- (13D) 8.2.46 SPRINKLERS SHALL NOT BE REQUIRED IN GARAGES, OPEN UNLESS REQUIRED BY THE AUTHORITY HAVING JURISDICTION
- (13D) 8.2.47 SPRINKLERS SHALL NOT BE REQUIRED IN GARAGES, OPEN UNLESS REQUIRED BY THE AUTHORITY HAVING JURISDICTION
- (13D) 8.2.48 SPRINKLERS SHALL NOT BE REQUIRED IN GARAGES, OPEN UNLESS REQUIRED BY THE AUTHORITY HAVING JURISDICTION
- (13D) 8.2.49 SPRINKLERS SHALL NOT BE REQUIRED IN GARAGES, OPEN UNLESS REQUIRED BY THE AUTHORITY HAVING JURISDICTION
- (13D) 8.2.50 SPRINKLERS SHALL NOT BE REQUIRED IN GARAGES, OPEN UNLESS REQUIRED BY THE AUTHORITY HAVING JURISDICTION
- (13D) 8.2.51 SPRINKLERS SHALL NOT BE REQUIRED IN GARAGES, OPEN UNLESS REQUIRED BY THE AUTHORITY HAVING JURISDICTION
- (13D) 8.2.52 SPRINKLERS SHALL NOT BE REQUIRED IN GARAGES, OPEN UNLESS REQUIRED BY THE AUTHORITY HAVING JURISDICTION
- (13D) 8.2.53 SPRINKLERS SHALL NOT BE REQUIRED IN GARAGES, OPEN UNLESS REQUIRED BY THE AUTHORITY HAVING JURISDICTION
- (13D) 8.2.54 SPRINKLERS SHALL NOT BE REQUIRED IN GARAGES, OPEN UNLESS REQUIRED BY THE AUTHORITY HAVING JURISDICTION
- (13D) 8.2.55 SPRINKLERS SHALL NOT BE REQUIRED IN GARAGES, OPEN UNLESS REQUIRED BY THE AUTHORITY HAVING JURISDICTION
- (13D) 8.2.56 SPRINKLERS SHALL NOT BE REQUIRED IN GARAGES, OPEN UNLESS REQUIRED BY THE AUTHORITY HAVING JURISDICTION
- (13D) 8.2.57 SPRINKLERS SHALL NOT BE REQUIRED IN GARAGES, OPEN UNLESS REQUIRED BY THE AUTHORITY HAVING JURISDICTION
- (13D) 8.2.58 SPRINKLERS SHALL NOT BE REQUIRED IN GARAGES, OPEN UNLESS REQUIRED BY THE AUTHORITY HAVING JURISDICTION
- (13D) 8.2.59 SPRINKLERS SHALL NOT BE REQUIRED IN GARAGES, OPEN UNLESS REQUIRED BY THE AUTHORITY HAVING JURISDICTION
- (13D) 8.2.60 SPRINKLERS SHALL NOT BE REQUIRED IN GARAGES, OPEN UNLESS REQUIRED BY THE AUTHORITY HAVING JURISDICTION
- (13D) 8.2.61 SPRINKLERS SHALL NOT BE REQUIRED IN GARAGES, OPEN UNLESS REQUIRED BY THE AUTHORITY HAVING JURISDICTION
- (13D) 8.2.62 SPRINKLERS SHALL NOT BE REQUIRED IN GARAGES, OPEN UNLESS REQUIRED BY THE AUTHORITY HAVING JURISDICTION
- (13D) 8.2.63 SPRINKLERS SHALL NOT BE REQUIRED IN GARAGES, OPEN UNLESS REQUIRED BY THE AUTHORITY HAVING JURISDICTION
- (13D) 8.2.64 SPRINKLERS SHALL NOT BE REQUIRED IN GARAGES, OPEN UNLESS REQUIRED BY THE AUTHORITY HAVING JURISDICTION
- (13D) 8.2.65 SPRINKLERS SHALL NOT BE REQUIRED IN GARAGES, OPEN UNLESS REQUIRED BY THE AUTHORITY HAVING JURISDICTION
- (13D) 8.2.66 SPRINKLERS SHALL NOT BE REQUIRED IN GARAGES, OPEN UNLESS REQUIRED BY THE AUTHORITY HAVING JURISDICTION
- (13D) 8.2.67 SPRINKLERS SHALL NOT BE REQUIRED IN GARAGES, OPEN UNLESS REQUIRED BY THE AUTHORITY HAVING JURISDICTION
- (13D) 8.2.68 SPRINKLERS SHALL NOT BE REQUIRED IN GARAGES, OPEN UNLESS REQUIRED BY THE AUTHORITY HAVING JURISDICTION
- (13D) 8.2.69 SPRINKLERS SHALL NOT BE REQUIRED IN GARAGES, OPEN UNLESS REQUIRED BY THE AUTHORITY HAVING JURISDICTION
- (13D) 8.2.70 SPRINKLERS SHALL NOT BE REQUIRED IN GARAGES, OPEN UNLESS REQUIRED BY THE AUTHORITY HAVING JURISDICTION
- (13D) 8.2.71 SPRINKLERS SHALL NOT BE REQUIRED IN GARAGES, OPEN UNLESS REQUIRED BY THE AUTHORITY HAVING JURISDICTION
- (13D) 8.2.72 SPRINKLERS SHALL NOT BE REQUIRED IN GARAGES, OPEN UNLESS REQUIRED BY THE AUTHORITY HAVING JURISDICTION
- (13D) 8.2.73 SPRINKLERS SHALL NOT BE REQUIRED IN GARAGES, OPEN UNLESS REQUIRED BY THE AUTHORITY HAVING JURISDICTION
- (13D) 8.2.74 SPRINKLERS SHALL NOT BE REQUIRED IN GARAGES, OPEN UNLESS REQUIRED BY THE AUTHORITY HAVING JURISDICTION
- (13D) 8.2.75 SPRINKLERS SHALL NOT BE REQUIRED IN GARAGES, OPEN UNLESS REQUIRED BY THE AUTHORITY HAVING JURISDICTION
- (13D) 8.2.76 SPRINKLERS SHALL NOT BE REQUIRED IN GARAGES, OPEN UNLESS REQUIRED BY THE AUTHORITY HAVING JURISDICTION
- (13D) 8.2.77 SPRINKLERS SHALL NOT BE REQUIRED IN GARAGES, OPEN UNLESS REQUIRED BY THE AUTHORITY HAVING JURISDICTION
- (13D) 8.2.78 SPRINKLERS SHALL NOT BE REQUIRED IN GARAGES, OPEN UNLESS REQUIRED BY THE AUTHORITY HAVING JURISDICTION
- (13D) 8.2.79 SPRINKLERS SHALL NOT BE REQUIRED IN GARAGES, OPEN UNLESS REQUIRED BY THE AUTHORITY HAVING JURISDICTION
- (13D) 8.2.80 SPRINKLERS SHALL NOT BE REQUIRED IN GARAGES, OPEN UNLESS REQUIRED BY THE AUTHORITY HAVING JURISDICTION
- (13D) 8.2.81 SPRINKLERS SHALL NOT BE REQUIRED IN GARAGES, OPEN UNLESS REQUIRED BY THE AUTHORITY HAVING JURISDICTION
- (13D) 8.2.82 SPRINKLERS SHALL NOT BE REQUIRED IN GARAGES, OPEN UNLESS REQUIRED BY THE AUTHORITY HAVING JURISDICTION
- (13D) 8.2.83 SPRINKLERS SHALL NOT BE REQUIRED IN GARAGES, OPEN UNLESS REQUIRED BY THE AUTHORITY HAVING JURISDICTION
- (13D) 8.2.84 SPRINKLERS SHALL NOT BE REQUIRED IN GARAGES, OPEN UNLESS REQUIRED BY THE AUTHORITY HAVING JURISDICTION
- (13D) 8.2.85 SPRINKLERS SHALL NOT BE REQUIRED IN GARAGES, OPEN UNLESS REQUIRED BY THE AUTHORITY HAVING JURISDICTION
- (13D) 8.2.86 SPRINKLERS SHALL NOT BE REQUIRED IN GARAGES, OPEN UNLESS REQUIRED BY THE AUTHORITY HAVING JURISDICTION
- (13D) 8.2.87 SPRINKLERS SHALL NOT BE REQUIRED IN GARAGES, OPEN UNLESS REQUIRED BY THE AUTHORITY HAVING JURISDICTION
- (13D) 8.2.88 SPRINKLERS SHALL NOT BE REQUIRED IN GARAGES, OPEN UNLESS REQUIRED BY THE AUTHORITY HAVING JURISDICTION
- (13D) 8.2.89 SPRINKLERS SHALL NOT BE REQUIRED IN GARAGES, OPEN UNLESS REQUIRED BY THE AUTHORITY HAVING JURISDICTION
- (13D) 8.2.90 SPRINKLERS SHALL NOT BE REQUIRED IN GARAGES, OPEN UNLESS REQUIRED BY THE AUTHORITY HAVING JURISDICTION
- (13D) 8.2.91 SPRINKLERS SHALL NOT BE REQUIRED IN GARAGES, OPEN UNLESS REQUIRED BY THE AUTHORITY HAVING JURISDICTION
- (13D) 8.2.92 SPRINKLERS SHALL NOT BE REQUIRED IN GARAGES, OPEN UNLESS REQUIRED BY THE AUTHORITY HAVING JURISDICTION
- (13D) 8.2.93 SPRINKLERS SHALL NOT BE REQUIRED IN GARAGES, OPEN UNLESS REQUIRED BY THE AUTHORITY HAVING JURISDICTION
- (13D) 8.2.94 SPRINKLERS SHALL NOT BE REQUIRED IN GARAGES, OPEN UNLESS REQUIRED BY THE AUTHORITY HAVING JURISDICTION
- (13D) 8.2.95 SPRINKLERS SHALL NOT BE REQUIRED IN GARAGES, OPEN UNLESS REQUIRED BY THE AUTHORITY HAVING JURISDICTION
- (13D) 8.2.96 SPRINKLERS SHALL NOT BE REQUIRED IN GARAGES, OPEN UNLESS REQUIRED BY THE AUTHORITY HAVING JURISDICTION
- (13D) 8.2.97 SPRINKLERS SHALL NOT BE REQUIRED IN GARAGES, OPEN UNLESS REQUIRED BY THE AUTHORITY HAVING JURISDICTION
- (13D) 8.2.98 SPRINKLERS SHALL NOT BE REQUIRED IN GARAGES, OPEN UNLESS REQUIRED BY THE AUTHORITY HAVING JURISDICTION
- (13D) 8.2.99 SPRINKLERS SHALL NOT BE REQUIRED IN GARAGES, OPEN UNLESS REQUIRED BY THE AUTHORITY HAVING JURISDICTION
- (13D) 8.2.100 SPRINKLERS SHALL NOT BE REQUIRED IN GARAGES, OPEN UNLESS REQUIRED BY THE AUTHORITY HAVING JURISDICTION



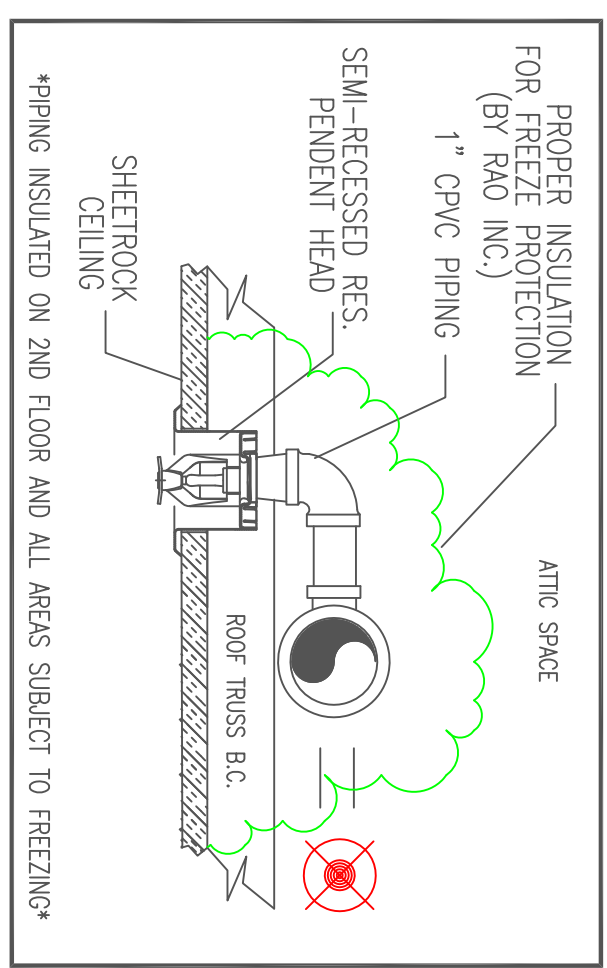
1 FIRST FLOOR
TOTAL PROTECTED AREA 920 SQ.FT.
SCALE: 1/4" = 1'-0"



2 SECOND FLOOR
TOTAL PROTECTED AREA 970 SQ.FT.
SCALE: 1/4" = 1'-0"



5 PLOT PLAN
SCALE: N.T.S.



4 HEAD DETAIL
SCALE: N.T.S.

CPVC CURING TIMES

FOR TFP-400, TFP-500
SPEARS FS-5

PIPE SIZE (INCHES)	AMBIENT TEMPERATURE DURING CURE PERIOD	CURE TIME (HOURS)
3/4"	60°F TO 120°F	48 HR.
1"	40°F TO 120°F	72 HR.
1-1/4"	40°F TO 120°F	16 HR.
1-1/2"	15 HR.	16 HR.
2"	15 HR.	36 HR.
2-1/2"	8 HR.	72 HR.

NOTE: FOR THESE SYSTEMS, THE SOLVENT CURE TIME CAN BE ADOPTED TO MAINTAIN TEMPERATURES BELOW 32°F. HOWEVER, THE SPRINKLER SYSTEM ABOVE AND ALLOWED TO CURE PER THE ABOVE RECOMMENDATIONS FROM TO PRESSURE TESTINGS.

CPVC HANGING NOTES

PIPE SIZE	NOMINAL PIPE SIZE	SPACING (FT)
3/4"	1"	1'-1/4"
1"	1-1/4"	1'-1/2"
1-1/4"	1-1/2"	2'
1-1/2"	2"	2'-1/2"
2"	2-1/2"	3'

PROJECT DESCRIPTION

BUILDING CONST.:
THE BUILDING IS 2 LEVELS ABOVE GRADE. 1 BELOW, CONSTRUCTED OF WOOD FRAMING, FIBERGLASS INSULATION, AND GYP BOARD CONSTRUCTION. CPVC SPRINKLER PIPING AS SHOWN ON PLAN.
BUILDING OCCUPANCY:
THE BUILDING WAS BUILT & DESIGNED FOR RESIDENTIAL LIVING USAGE. UNOCCUPIED ATTIC SPACE AND GARAGE.
SPRINKLER SYSTEM DESIGN:
WHERE IS A WET SYSTEM FOR THE DWING UNIT IN ACCORDANCE WITH NFPA 13D 2016ed.
RESIDENTIAL LIVING SPACE PROTECTED WITH RESIDENTIAL RATED CPVC SPRINKLER HEADS. THE CPVC SPRINKLER PIPING ABOVE OR IN WALL GC TO PROPERLY INSULATE AROUND SPRINKLER PIPING TO PREVENT WATER FILLED PIPE FROM FREEZING. THE SPRINKLER SYSTEM WAS DESIGNED TO MEET APPLICABLE CODE REBARING NFPA 13D 2016ed. SYSTEM.

HIGH TECH FIRE PROTECTION
P.O. BOX 156
MANTON, ME 04258-0258
TEL: (207) 998-2531 FAX: (207) 998-4887
OFFICE: 1800-962-0021

NAME LICENSE # 102
GENERAL CONTRACTOR ON RECORD:
RAO ENTERPRISES INC.
24 WHITNEY BROOK LN, CANTON, ME
OFFICE: (207) 778-4352
CELL: (207) 850-9620

SPECIAL APPLICATIONS:

DESIGN & SYSTEM NOTES:
WITH PERMITTED (7.6.1) PER THE SCHEDULE TO ALL PIPING 1 1/4" & SMALLER TO BE SPRINKLED AND APPROPRIATE FINISH OR CPVC.
POSITION, LOCATION, SPACING, AND USE OF HANGERS SHALL BE IN ACCORDANCE WITH NFPA 13, (SEE PLAN REVISIONS) AND SYSTEM HANGING NOTES.
HIGH TECH FIRE PROTECTION IS TO BEGIN WORK AT 6" MAIN 1" AFF NEAR OF BUILDING.
DIMENSIONS AND LOCATIONS GIVEN FOR SPRINKLER EQUIPMENT TO PROTECT WATER FILLED PIPING AND EQUIPMENT FROM FREEZE TEMPERATURES.
OWNER TO PROVIDE APPROPRIATE HEAT THROUGHOUT ACTUAL FIELD CONDITIONS.
OWNER IS RESPONSIBLE TO MAINTAIN THE SPRINKLER OF NEPA A "FUNCTIONAL TESTING, A TEST WITNESS OF WATER-BASED FIRE PROTECTION SYSTEMS" AND/ LINES, CORES AND BRANCHES. ANZ AND/OR LOCAL ALL MECHANICAL, ELECTRICAL AND PLUMBING SPRINKLER CONTRACTOR.
ALL ELECTRICAL WORK IS TO BE DONE BY OTHERS.

LEGEND:
○ MAIN PIPE RISER UP OR DOWN
○ MAIN PIPE DRAIN
— CPVC PIPE
— STEEL PIPE
▲ SYSTEM RISER
+ PIPE PITCH & MAINS ½ LINES
● HYDRULIC CALC. POINT

MODEL: QLOBE*
K=4.95
K=4.95
22 / 7.155
1 1/2" WHITE PENDANT SEMI-RECESSED ESC.
16" X 16" MAX SPACING
14 GPM @ 0.2 FSI

MODEL: QLOBS*
K=5.8
K=5.8
22 / 7.155
1 1/2" BRASS UPRIGHT DEFLECTORS 1" TO 1 1/2" BELOW NON-COMBUSTIBLE CEILINGS

DATE: APRIL 19, 2017
DESIGNER: ED BOLLIN (RMS# 5153)
CHECKED BY: AL FOSS

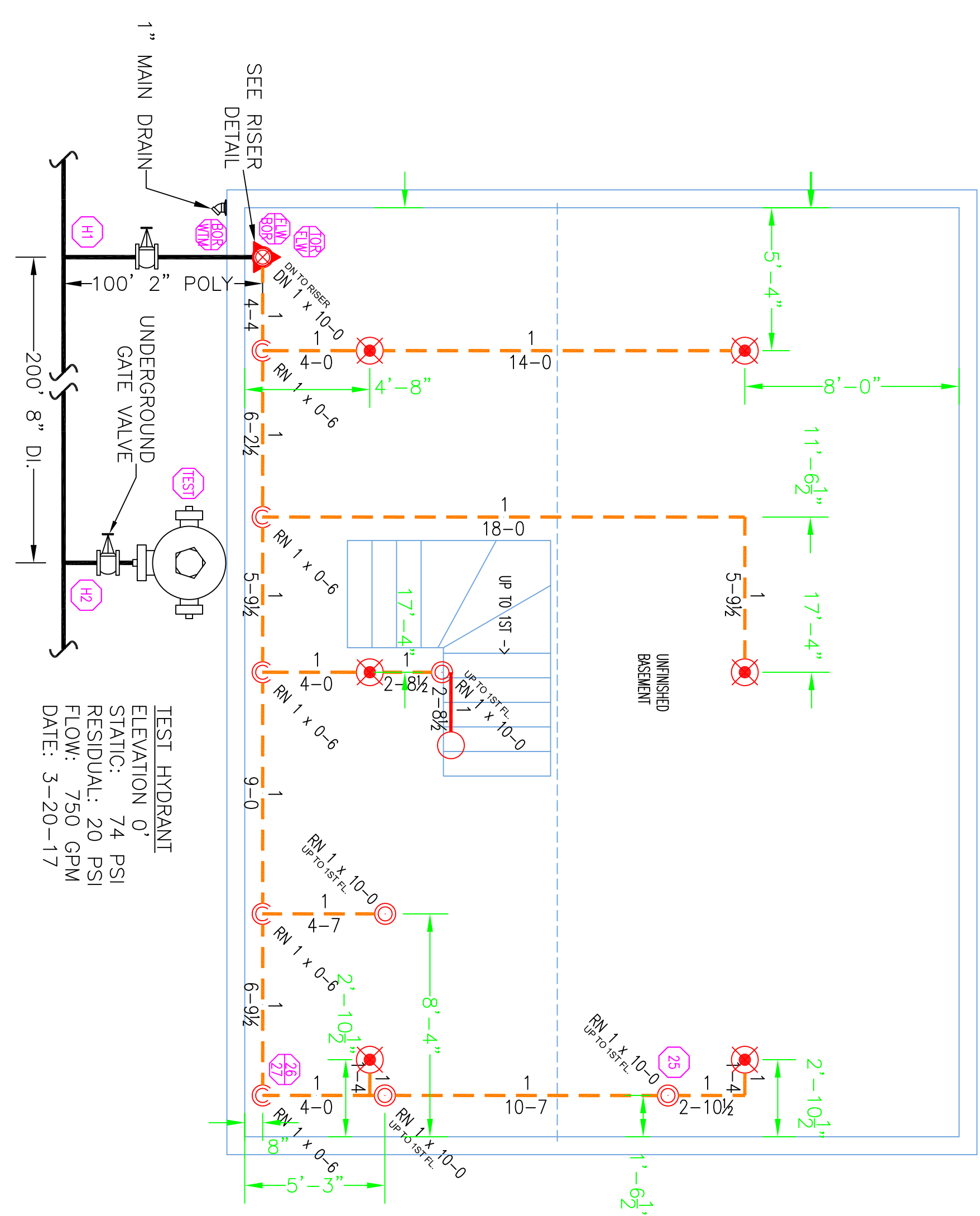
LOCATION:
21 ICE POND DRIVE
PORTLAND, ME

DRAWING TITLE:
BRANDON & LAURA
GERVAIS HOME

FIRE PROTECTION PLAN (NFPA 13D 2016ed.)

DRAWING NO.: FP-01

0 BASEMENT LEVEL
TOTAL PROTECTED AREA 920 SQ.FT.
SCALE: 1/4" = 1'-0"



3 RISER DETAIL
SCALE: N.T.S.

