

## Gervais

---

- Specify the depth at which the foundation reaches  
The foundation wall will be 94" with 82" backfilled.

Add dimension to drawings to show extent of the 94"

Please see Attachment 1 with additional information to include request.

- Specify the type of damp proofing.  
Foundation tar rolled-on application prior to backfilling.

Provide more info.  
See IRC sect. 406

### **R406.2 Concrete and masonry foundation waterproofing.**

In areas where a high water table or other severe soil-water conditions are known to exist, exterior foundation walls that retain earth and enclose interior spaces and floors below *grade* shall be waterproofed from the top of the footing to the finished *grade*. Walls shall be waterproofed in accordance with one of the following:

1. Two-ply hot-mopped felts.
2. Fifty five pound (25 kg) roll roofing.
3. Six-mil (0.15 mm) polyvinyl chloride.
4. Six-mil (0.15 mm) polyethylene.
5. Forty-mil (1 mm) polymer-modified asphalt.
6. Sixty-mil (1.5 mm) flexible polymer cement.
7. One-eighth inch (3 mm) cement-based, fiber-reinforced, waterproof coating.



The Seal-Krete 5 gal. Clear Waterproofing Sealer protects vertical concrete, masonry, metal and vinyl surfaces against the damaging effects of moisture penetration. This water-based sealer can be mixed with latex paint to extend the life of the paint and improve paint adhesion. The acrylic formula provides resistance from UV rays and mildew to ensure a rejuvenated, brightened finish.

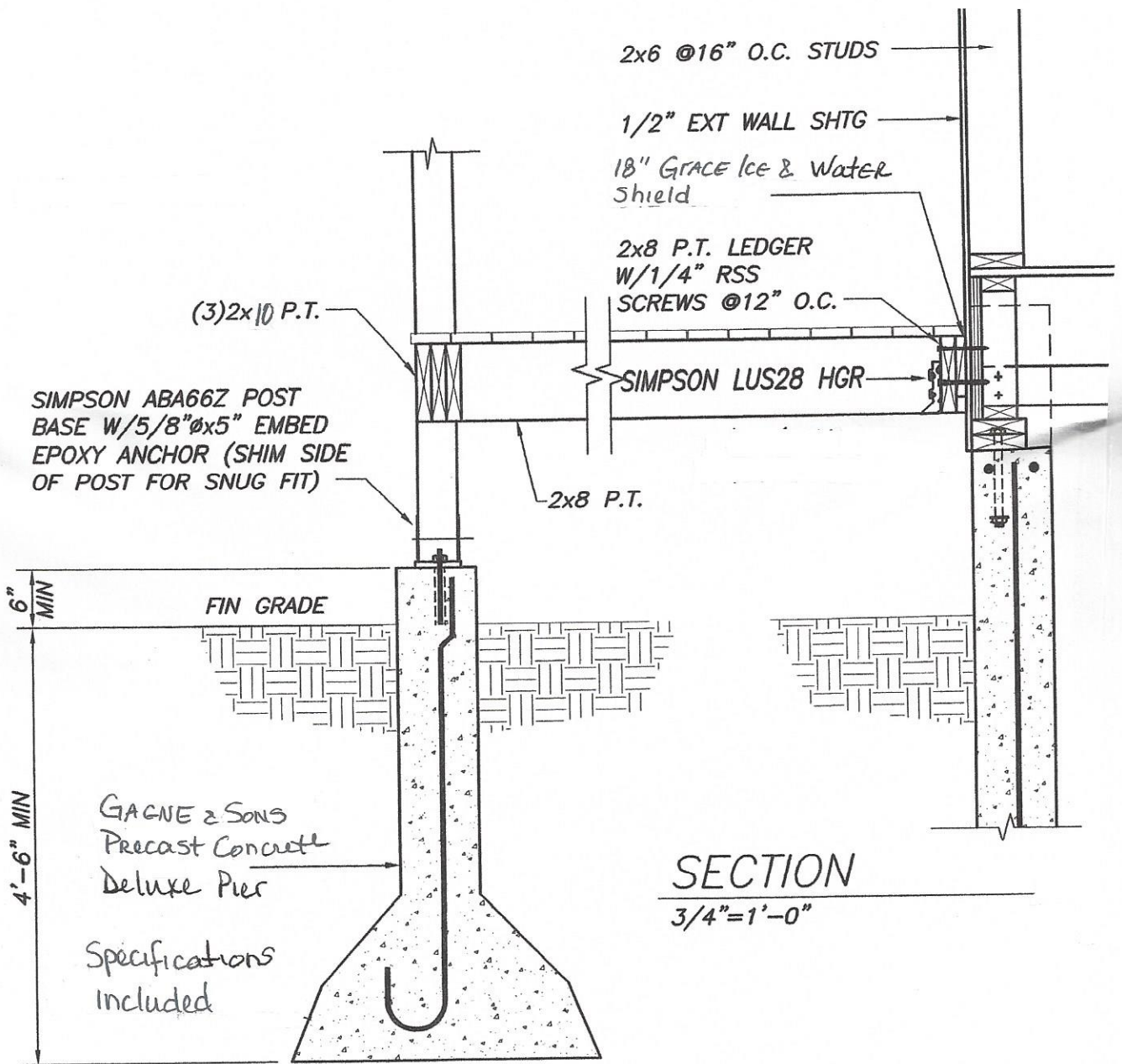
- Seals and protects stucco, brick, concrete, painted metal and vinyl surfaces from the damaging effects of water penetration
- 5 gal. container waterproofs up to 1,500 sq. ft.
- Clear finish rejuvenates color on older painted and colored surfaces
- UV resistant to guard against fading
- Mildew resistant to prevent the coated surface from rotting and discoloring
- Dries to the touch in 1 hour to provide quick protection
- 2 coats are recommended for maximum
- Water-based acrylic formula mixes with latex paint to extend the paint life
- Low odor for less irritation during use

# Gervais

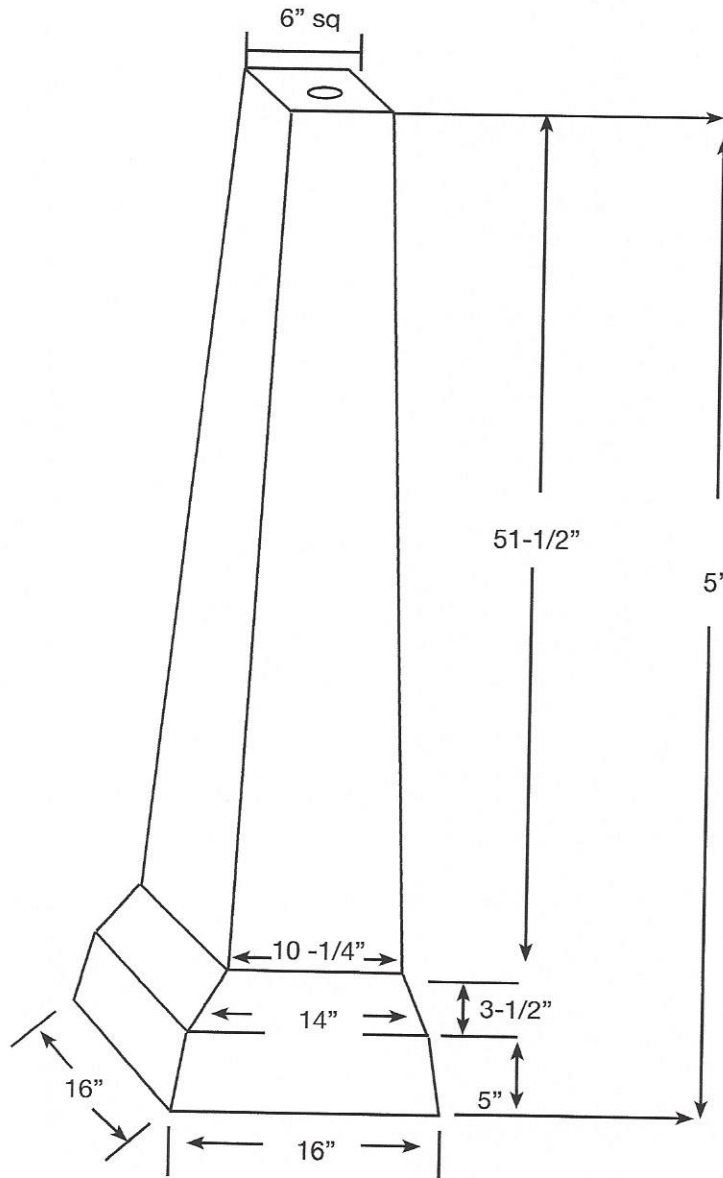
- Detail the support of the deck, the connection of the deck to the main structure, baluster spacing & railing heights.

Ledger to be lagged with 5/16" X 4" exterior lag bolts attached every two feet.

Provide Drawing (R502.2.2)



Precast Concrete Deluxe Pier



Design Notes:

1. Concrete Mix Design is 5,000 PSI standard at 28 days, Type 3 Cement.
2. Reinforced Steel ASTM A 615, Grade 60.
3. Smooth Finish on all exposed surfaces.

## ABA/ABU/ABW Adjustable and Standoff Post Bases

---

The AB series of retrofit adjustable post bases provide a 1" standoff for the post, are slotted for adjustability and can be installed with nails, Strong-Drive® SD Connector screws or bolts (ABU). Depending on the application needs, these adjustable standoff post bases are designed for versatility, cost-effectiveness and maximum uplift performance.

### Key Features

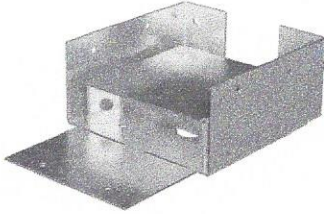
- The slot in the base enables flexible positioning around the anchor bolt, making precise post placement easier
- The 1" standoff helps prevent rot at the end of the post and meets code requirements for structural posts installed in basements or exposed to weather or water splash

### Material

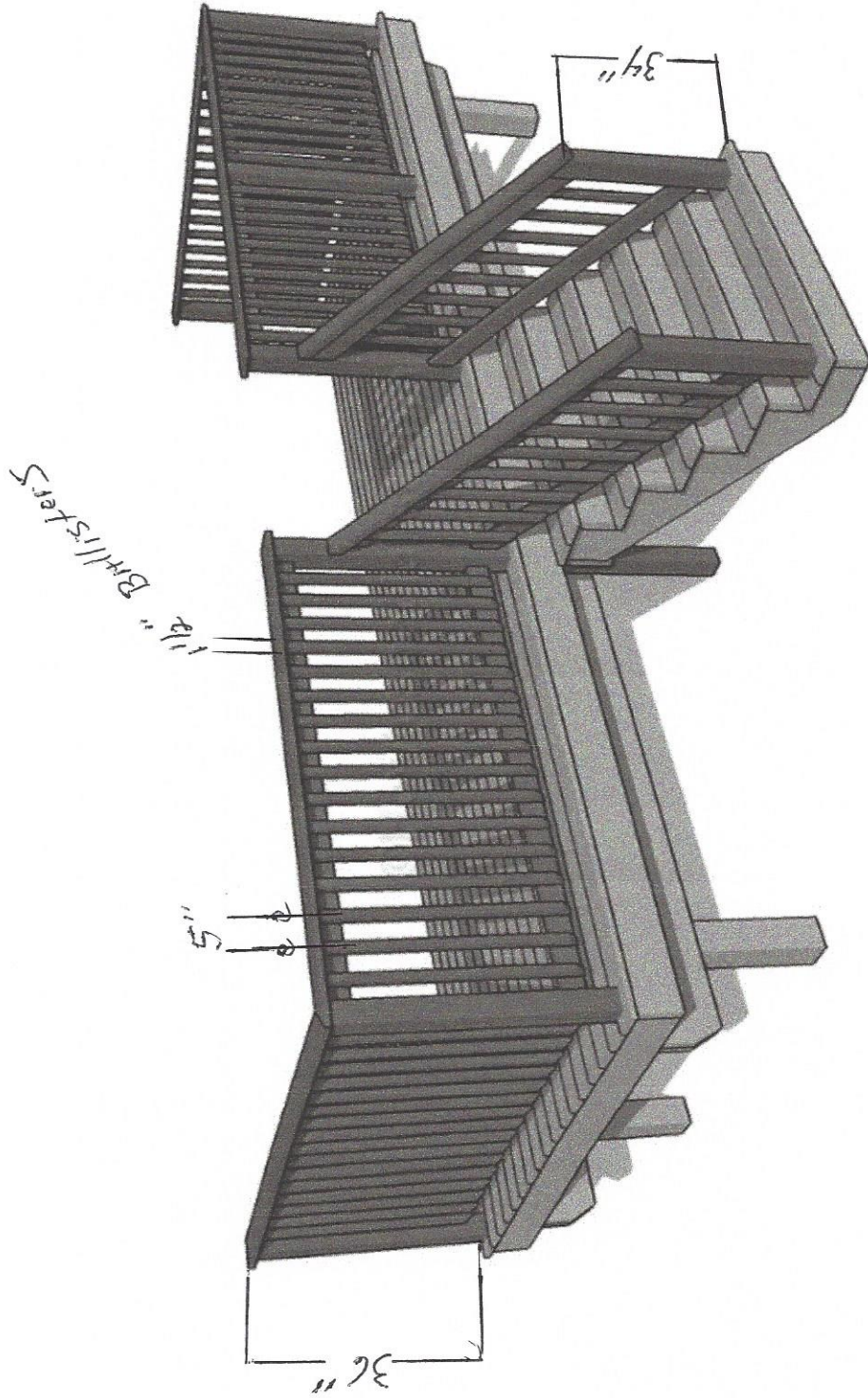
- Varies (see model table)

### Finish

- All galvanized. Most offered in ZMAX® coating. See Corrosion Information.



Gervais



# Gervais

- Specify appropriate fire separation construction methods have been taken (R302.6)  
5/8" Sheet Rock on common wall and ceiling of attached garage  
Sprinkler System of High Tech Fire Protection

All walls or just one wall?

TABLE R302.6  
DWELLING/GARAGE SEPARATION

SEPARATION		MATERIAL
From the residence and attics	YES = 5/8 inch	Not less than 1/2-inch gypsum board or equivalent applied to the garage side
From all habitable rooms above the garage	↑	Not less than 5/8-inch Type X gypsum board or equivalent
Structure(s) supporting floor/ceiling assemblies used for separation required by this section	N/A	Not less than 1/2-inch gypsum board or equivalent
Garages located less than 3 feet from a dwelling unit on the same lot	↓	Not less than 1/2-inch gypsum board or equivalent applied to the interior side of exterior walls that are within this area

For SI: 1 inch = 25.4 mm, 1 foot = 304.8 mm.

5/8" gypsum board will be used on the interior common wall between the attached garage and the home AND on the ceiling of the garage

See Attachment 2

## Gervais

---

- How do you access the attic area of both the house and garage?  
Attic access to house is via the walk in closet on 2<sup>nd</sup> floor in Master Bedroom.  
Attic access to the garage will be centered in garage ceiling.

Show in drawings. Show dimensions

Please see Attachment 2 with additional information to include request.

- Provide header schedule for openings requiring headers.  
All headers under a 6' rough opening will be 2X10 boxed with insulation.  
All header over 6' rough opening will be 3-ply 2X10 with 2-ply ½" plywood and double jacks.

single 2x10?

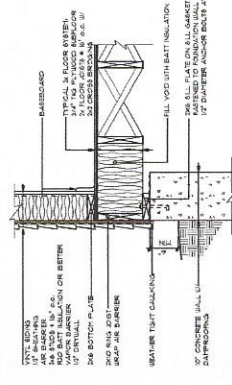
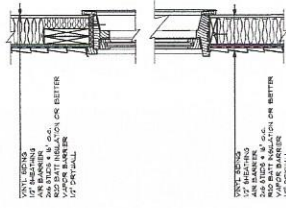
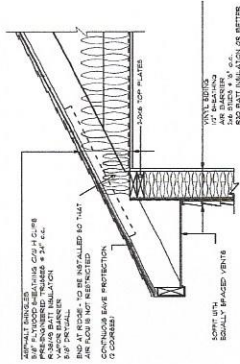
All headers under a 6' rough opening will be boxed: two (2) 2X10 with 2X6 top and bottom and insulation in the middle.

All header over 6' rough opening will be 3-ply 2X10 with 2-ply ½" plywood and double jacks.

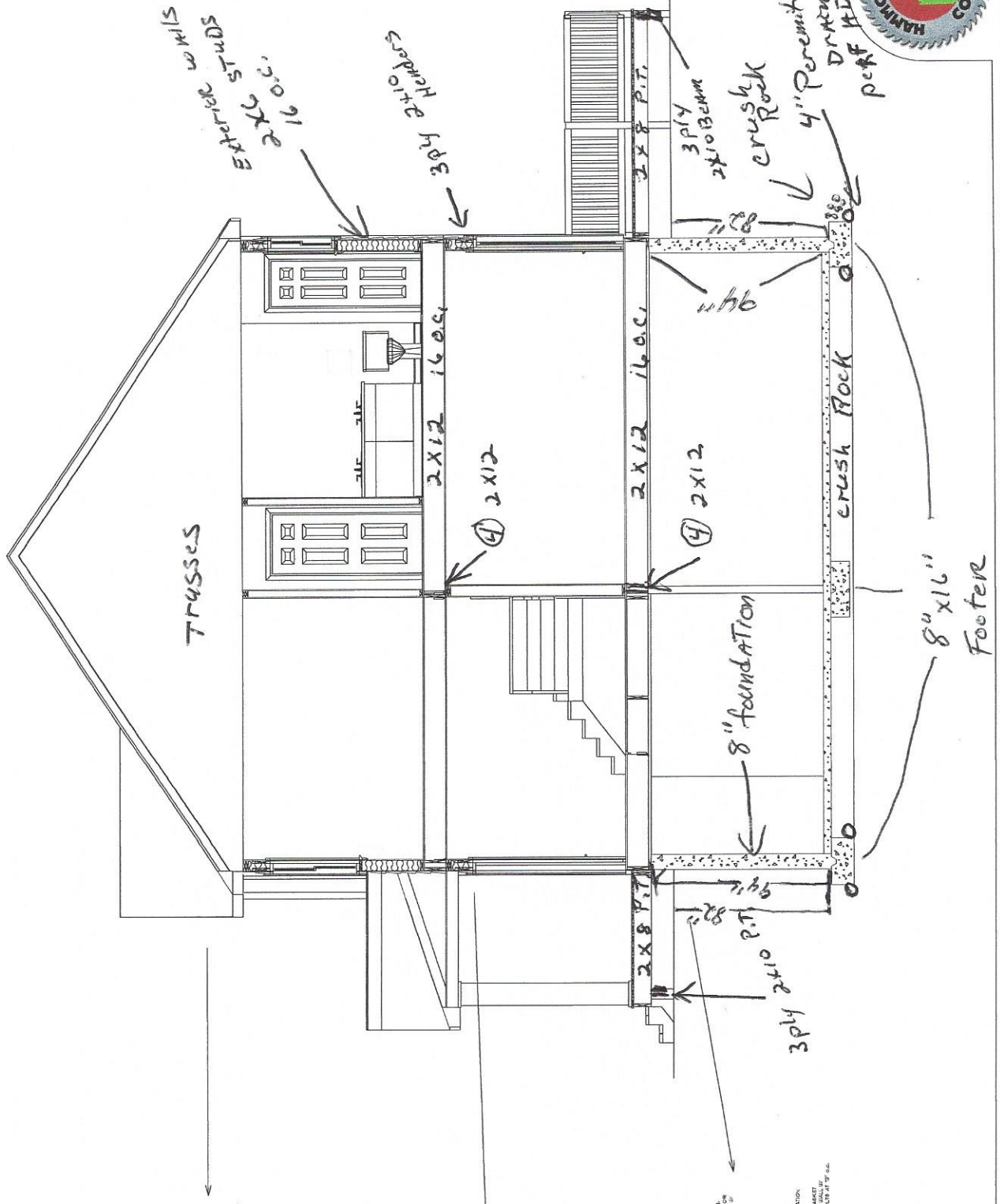


Gervais - Attachment 1

**PRELIMINARY DRAWING  
NOT FOR CONSTRUCTION**

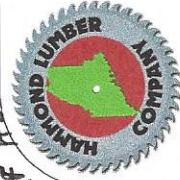


SECTION SCALE: 1/4" = 1'-0"



BRANDON & LAURA GERVAIS  
GERVAIS RESIDENCE  
28 X 36 1 STORY

NAME: BRANDON & LAURA GERVAIS  
DATE: JUN 11  
SCALE: AS NOTED  
PROJECT NUMBER: 2026

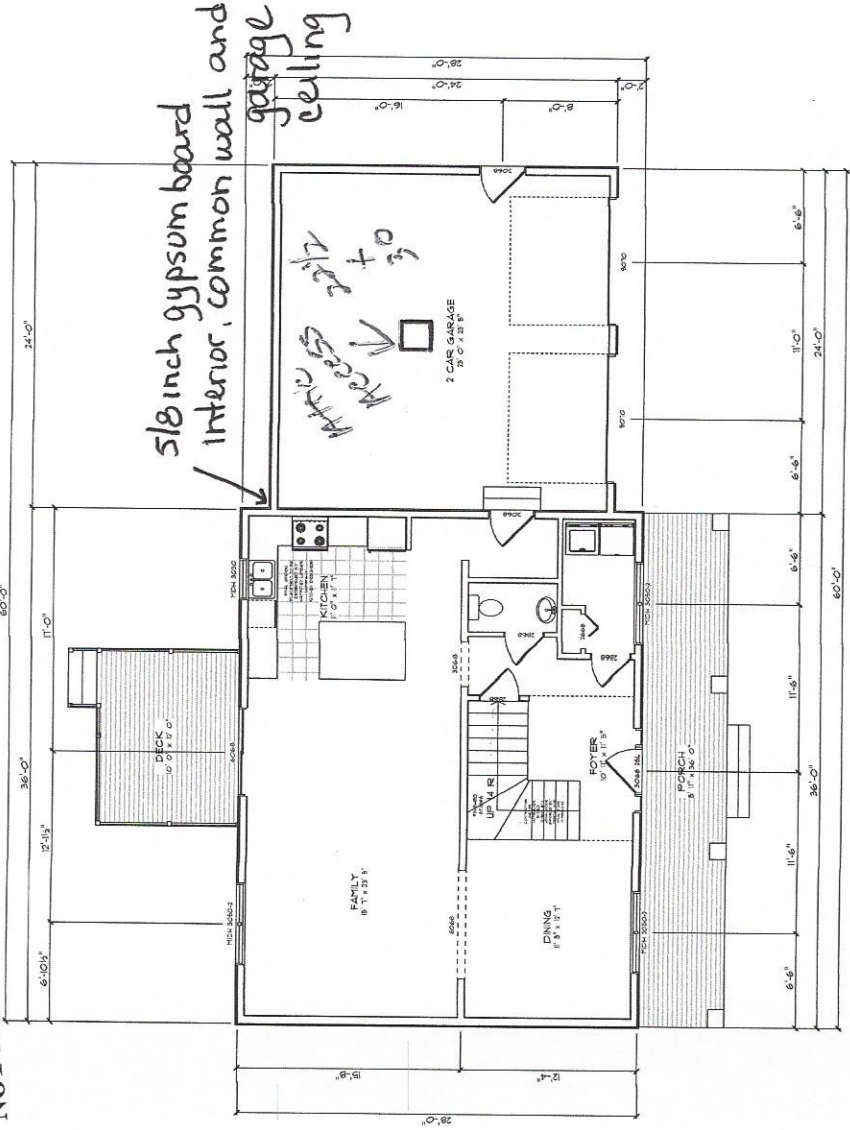


PLANNING AND DESIGN SERVICES FOR RESIDENTIAL PROJECTS ARE PROVIDED BY HAMMOND LUMBER COMPANY AS A SEPARATE SERVICE FROM THE SALE OF LUMBER. HAMMOND LUMBER COMPANY DOES NOT PROVIDE ARCHITECTURAL SERVICES AND IS NOT A LICENSED ARCHITECT. ALL SERVICES ARE PROVIDED AS A DESIGN PROFESSIONAL SERVICE ONLY AND ARE SUBJECT TO THE STANDARD CONDITIONS OF CONTRACT FOR RESIDENTIAL PROJECTS. THIS DRAWING IS NOT TO BE USED AS A BASIS FOR CONSTRUCTION AND HAMMOND LUMBER COMPANY DISCLAIMS ANY RESPONSIBILITY THEREFOR.

Hammond Lumber Company  
2111 184th Avenue  
Humboldt, BC V2Y 1A2  
Canada  
Tel: 250-338-3842

# Gerrais - Attachment 2

**PRELIMINARY DRAWING  
NOT FOR CONSTRUCTION**



**FIRST FLOOR**  
SCALE: 1/4" = 1'-0"

**AREA SCHEDULE**

AREA	AREA
FIRST FLOOR (MAIN)	1,004.45 S.F.
FIRST FLOOR (GARAGE)	154.14 S.F.
SECOND FLOOR (MAIN)	1,004.45 S.F.
PERIMETER	242.41 S.F.

**AREA SCHEDULE**

**WINDOW SCHEDULE**

WINDOW	DATE	REVISION
1	12-15-2009	REVISION SCHEDULE
2	12-15-2009	REVISION SCHEDULE
3	12-15-2009	REVISION SCHEDULE
4	12-15-2009	REVISION SCHEDULE
5	12-15-2009	REVISION SCHEDULE

**WINDOW SCHEDULE**

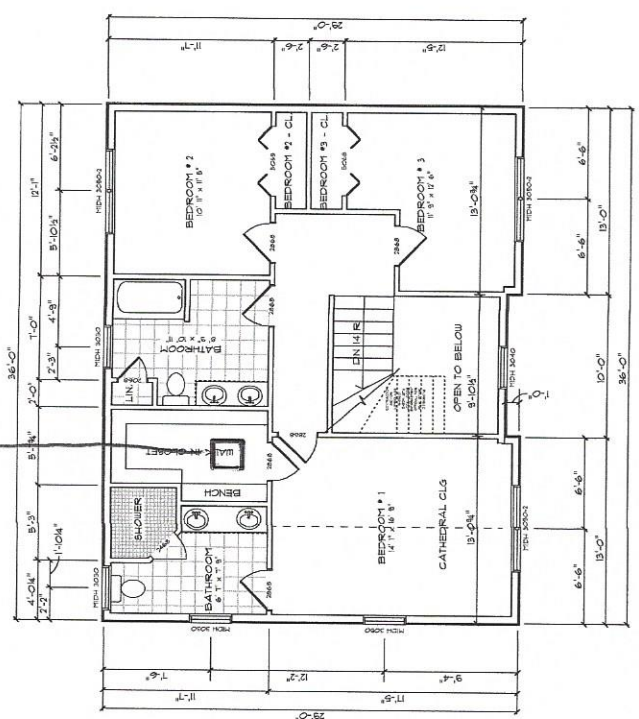
**REVISION SCHEDULE**

NO.	DATE	DESCRIPTION
1	12-15-2009	REVISION SCHEDULE
2	12-15-2009	REVISION SCHEDULE
3	12-15-2009	REVISION SCHEDULE
4	12-15-2009	REVISION SCHEDULE
5	12-15-2009	REVISION SCHEDULE

**REVISION SCHEDULE**

5/8 inch gypsum board interior, common wall and garage ceiling  
Attic access 2/3 to 2/4

Attic access 2/3 to 2/4



**SECOND FLOOR**  
SCALE: 1/4" = 1'-0"

**Lumber Company**

BRANDON & LAURA GERRAIS  
29 X 36 2 STORY  
PORTLAND

**201604**

DATE	201604
SCALE	AS NOTED
PROJECT	29 X 36 2 STORY



BRANDON & LAURA GERRAIS  
29 X 36 2 STORY  
PORTLAND

