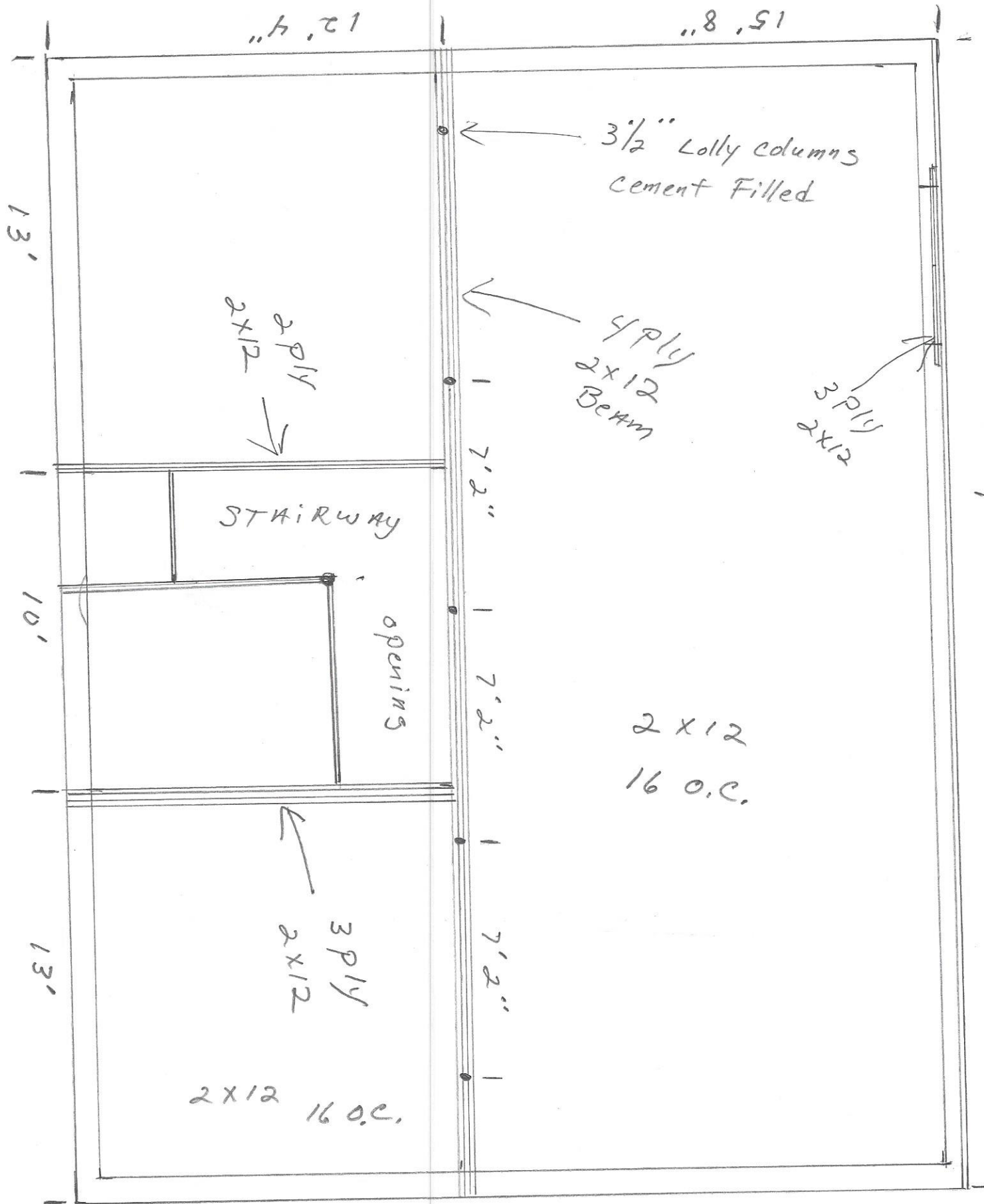


1st Floor: Garrais



12' 4"

15' 8"

13'

2 ply  
2x12

3 1/2" Lolly columns  
cement Filled

4 ply  
2x12  
Beam

3 ply  
2x12

STAIRWAY

10'

opening

7' 2"

7' 2"

2x12  
16 o.c.

3 ply  
2x12

7' 2"

13'

2x12 16 o.c.