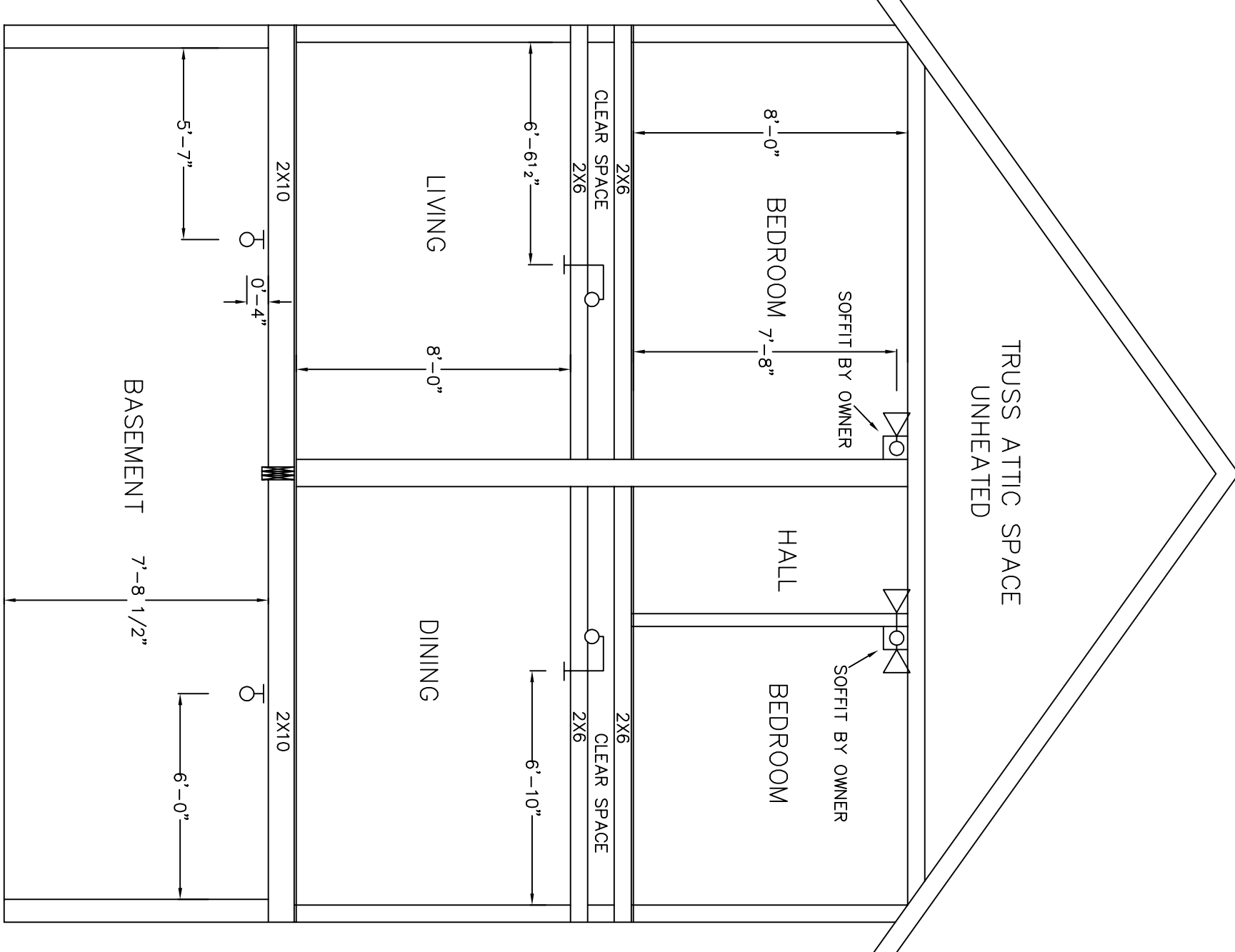
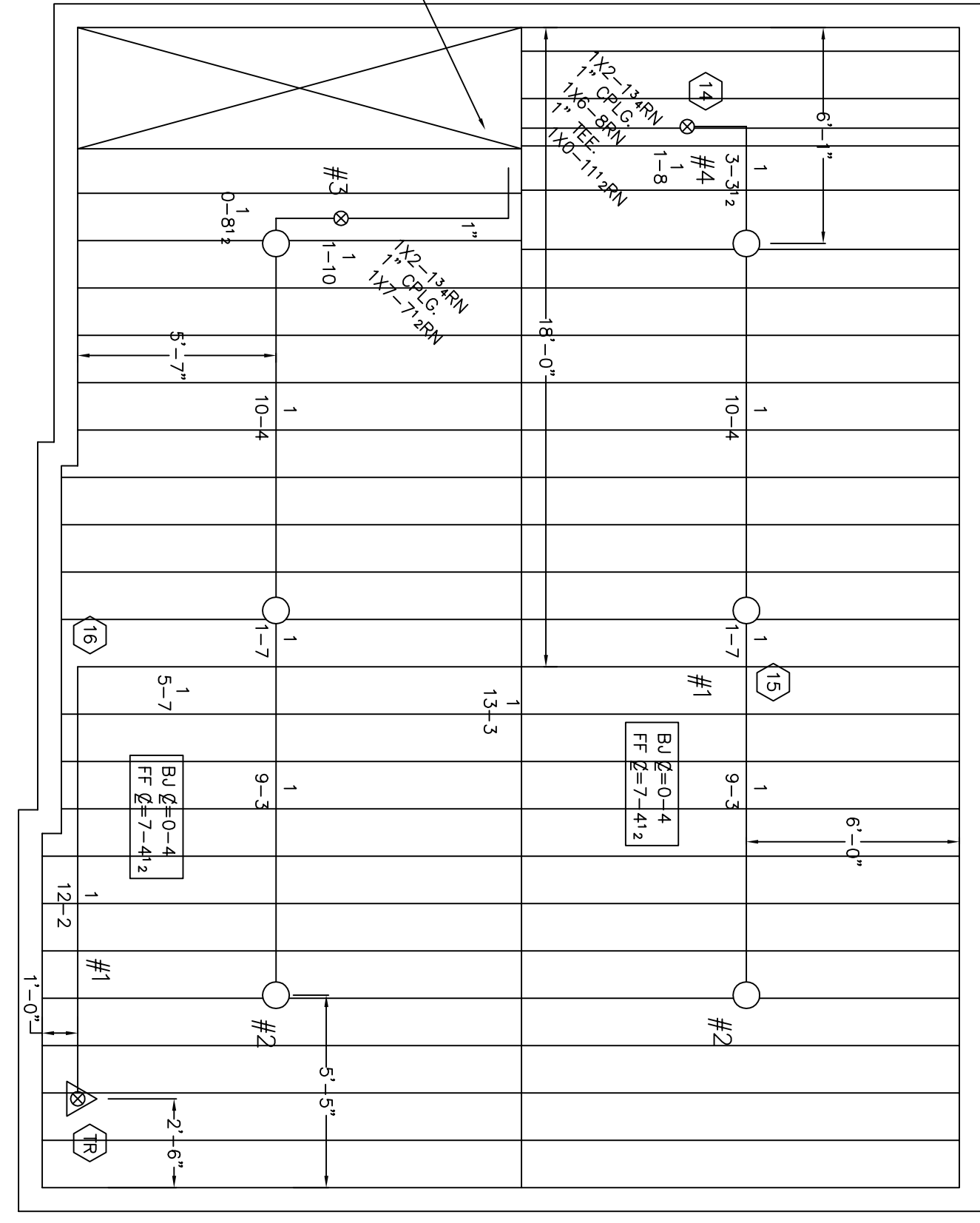
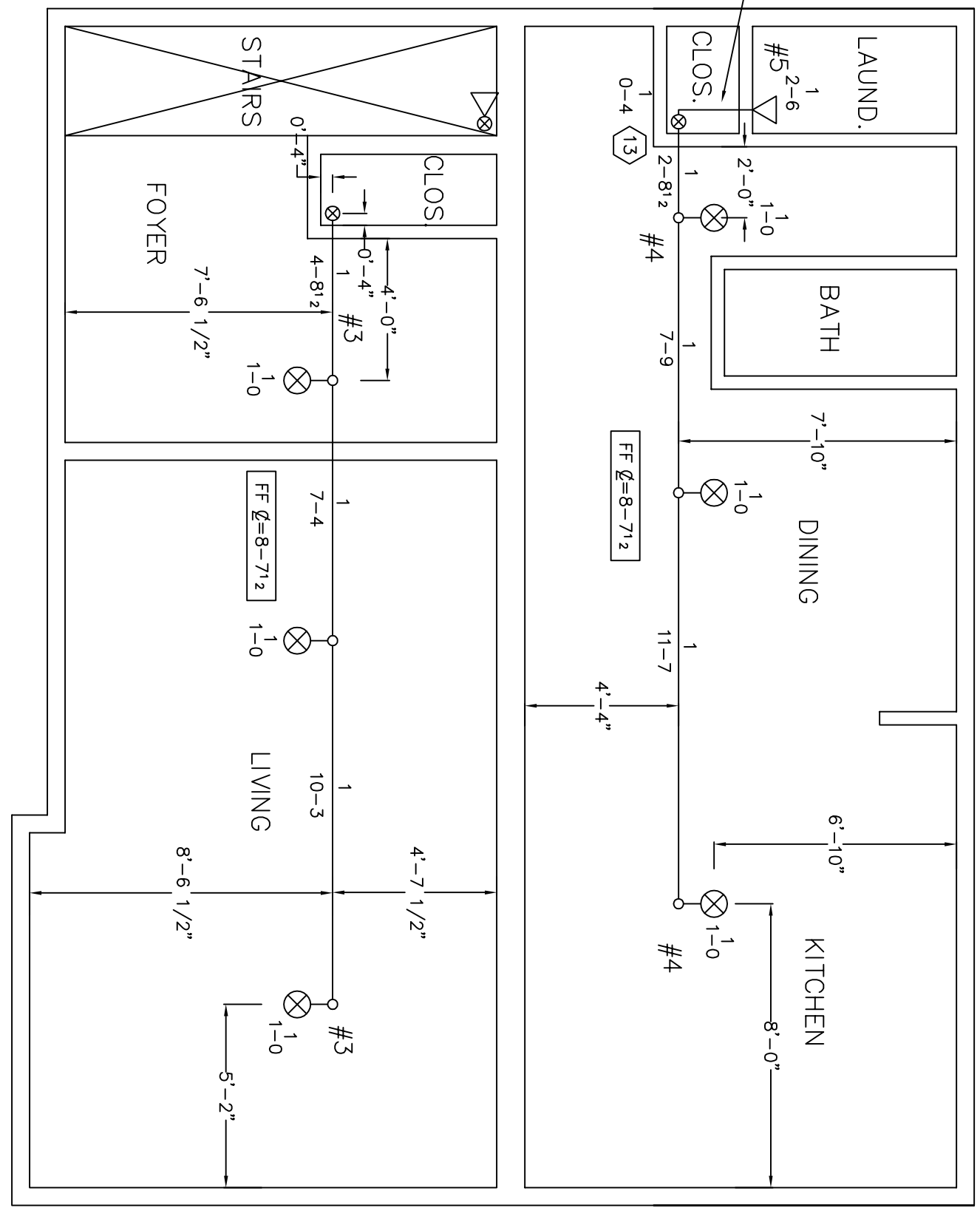
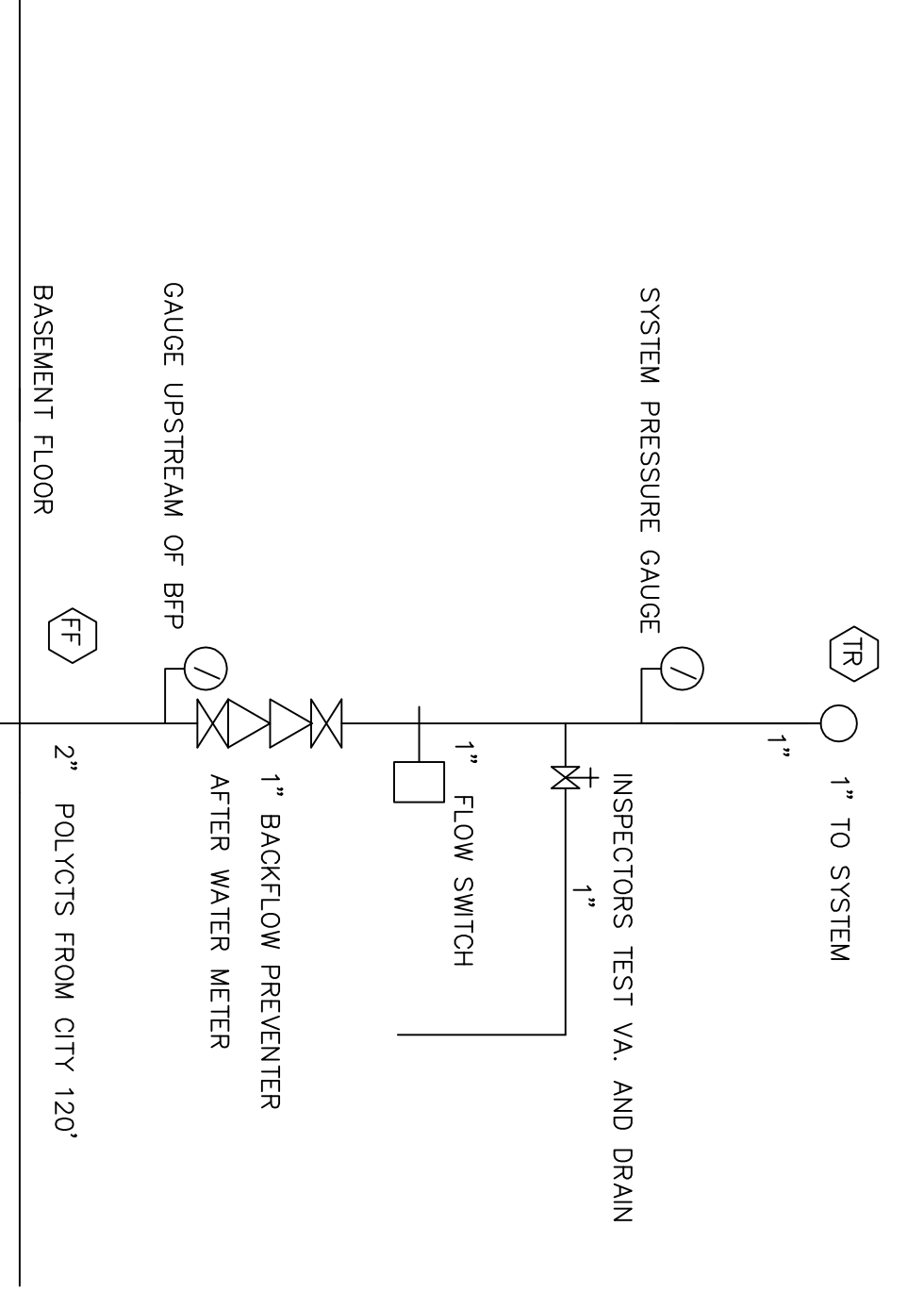


CALC. 58 ICE POND DRIVE, WAF
 HYDRAULIC DATA:
 BASIS OF DESIGN:
 DESIGN PRESSURE 155 PSI
 TOTAL OFFICE TEMP SPRINKLERS 2 7/16" 155"
 SYSTEM DEMAND AT CITY RESERVE 2.500
 SAFETY MARGIN 15.9 PSI OCCUPANCY: RESIDENCE



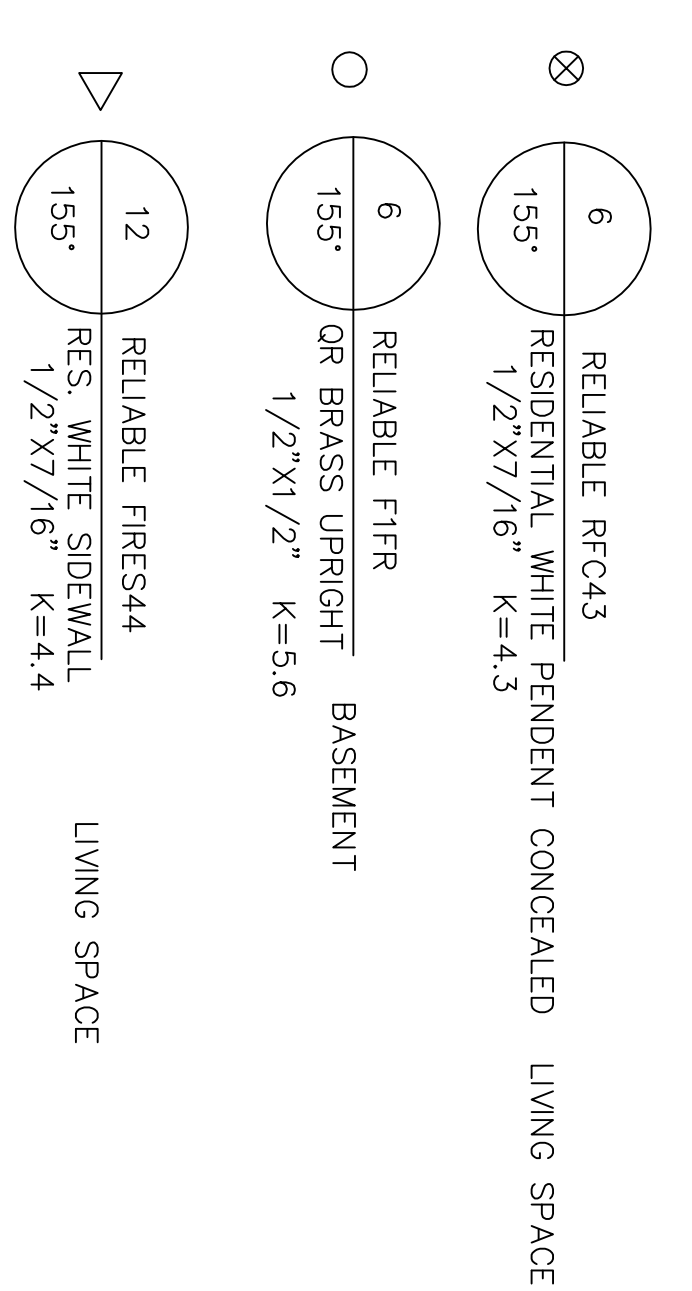
BUILDING SECTION



RISER SECTION
 NO SCALE

GENERAL NOTES
 ALL DIMENSIONS ARE CENTER TO CENTER U/N
 ALL 2" AND SMALLER PIPE TO SCH 40 BLACK STEEL
 ALL SCREWED FITTINGS TO BE STD. WT. C.I. BLACK U/N/
 ALL HANGER SPACING AND SIZES TO CONFORM TO NFPA #13
 SUFFICIENT HEAT TO PREVENT FREEZING OF THE WET PIPE SPRINKLER SYSTEM
 AND REQUIRED INSULATION METHODS PER NFPA STANDARDS
 ARE REQUIRED TO BE FURNISHED BY THE BUYER/OWNER

- LEGEND**
- ▷ 12-155' RELIABLE FIFRES44 WHITE RES HOR SIDEWALL SPRINKLER LIVING SPACE
 - ⊗ 6-165' RELIABLE RFC43 RES. WHITE CONCEALED PENDENT LIVING SPACE
 - 6-155' RELIABLE FIFR Q R BRASS UPRIGHT BASEMENT
 - FF \bar{q} =XX FIN FLR TO CENTERLINE OF PIPE
 - BU \bar{q} =XX BOTTOM OF JOISTS TO CENTERLINE OF PIPE
 - C \bar{q} =XX CEILING TO CENTERLINE OF PIPE
 - RISE OR DROP NIPPLE
 - ⊙ RISER BETWEEN FLOORS



SYSTEM CLASSIFICATION

A WET PIPE NFPA #13D
 SPRINKLER SYSTEM TO BE INSTALLED IN ALL
 AREAS OF THE RESIDENCE TO MEET NFPA,
 STATE, AND CITY OF PORTLAND CODES.

DEAN & ALLYN, INC.
 FIRE PROTECTION • SPECIAL HAZARD

PO BOX 709, GRAY, MAINE 04039
 (207)657-5646 FAX: (207)657-5647

NO. OF REVISIONS	DATE	BY	DESCRIPTION
6	8-12-16	HAK	TITLE
5	8-13-16	HAK	DRAWN BY
4		DAS	CHECKED BY
3		DAS	DATE
2		AT DEAN & ALLYN, INC	SCALE 1/4"=1'-0"
1			SHEET NO. 1 OF 1

58 ICE POND DRIVE
 ERIC STODDARD RESIDENCE
 PORTLAND MAINE

NO. OF REVISIONS
 24
 NO. OF SPRINKLERS
 24
 CHANGE NO.
 C161365