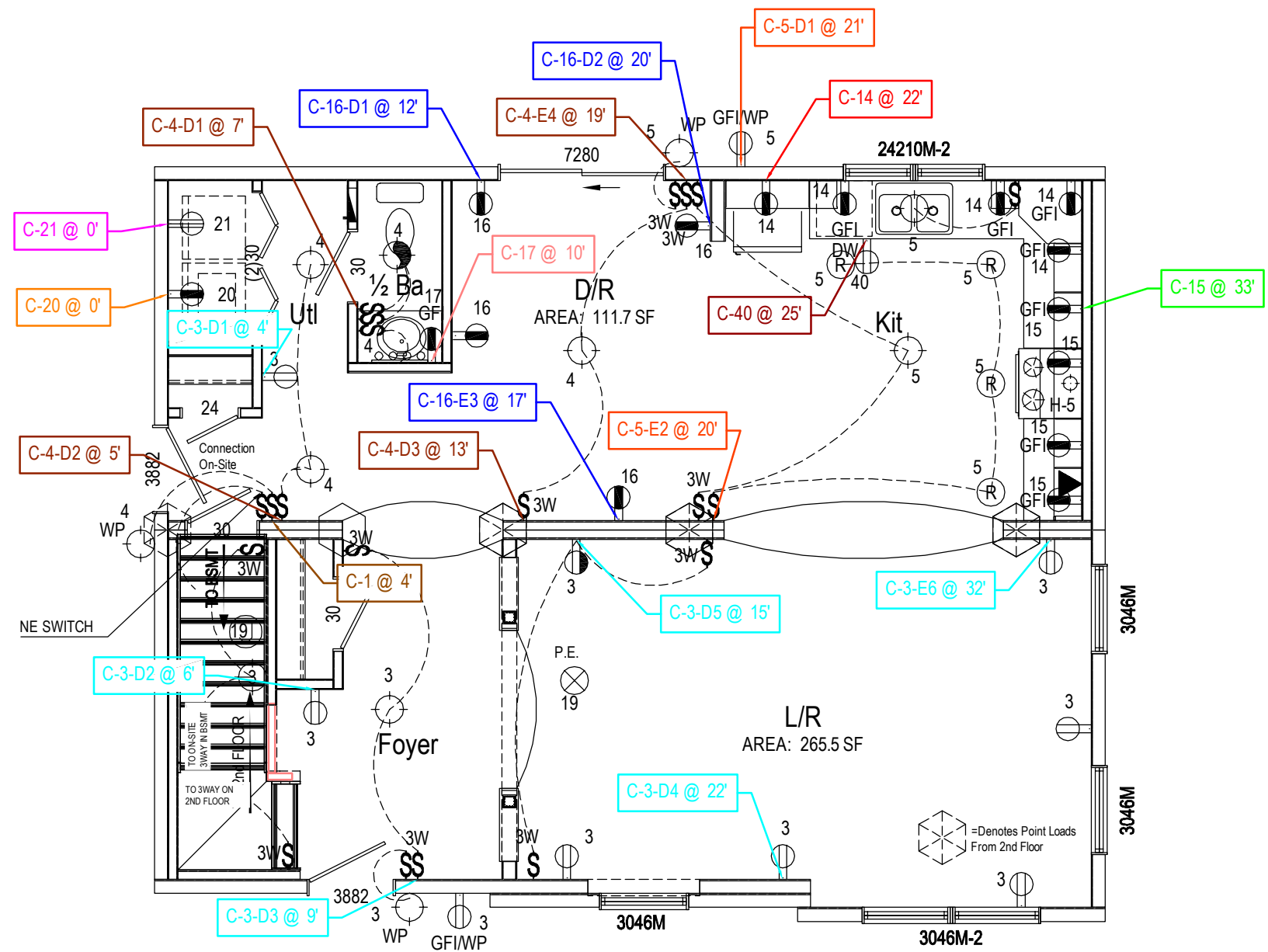


NOTE: RECEP.TS. IN OPT. F.P., LIBRARY, OR ENTER. CENTER AREA MAY NEED TO BE OMITTED ADDED OR MOVED

A = 22½x30½ ATTIC ACCESS
 AP = 22½x54 PULL DOWN ATTIC ACCESS

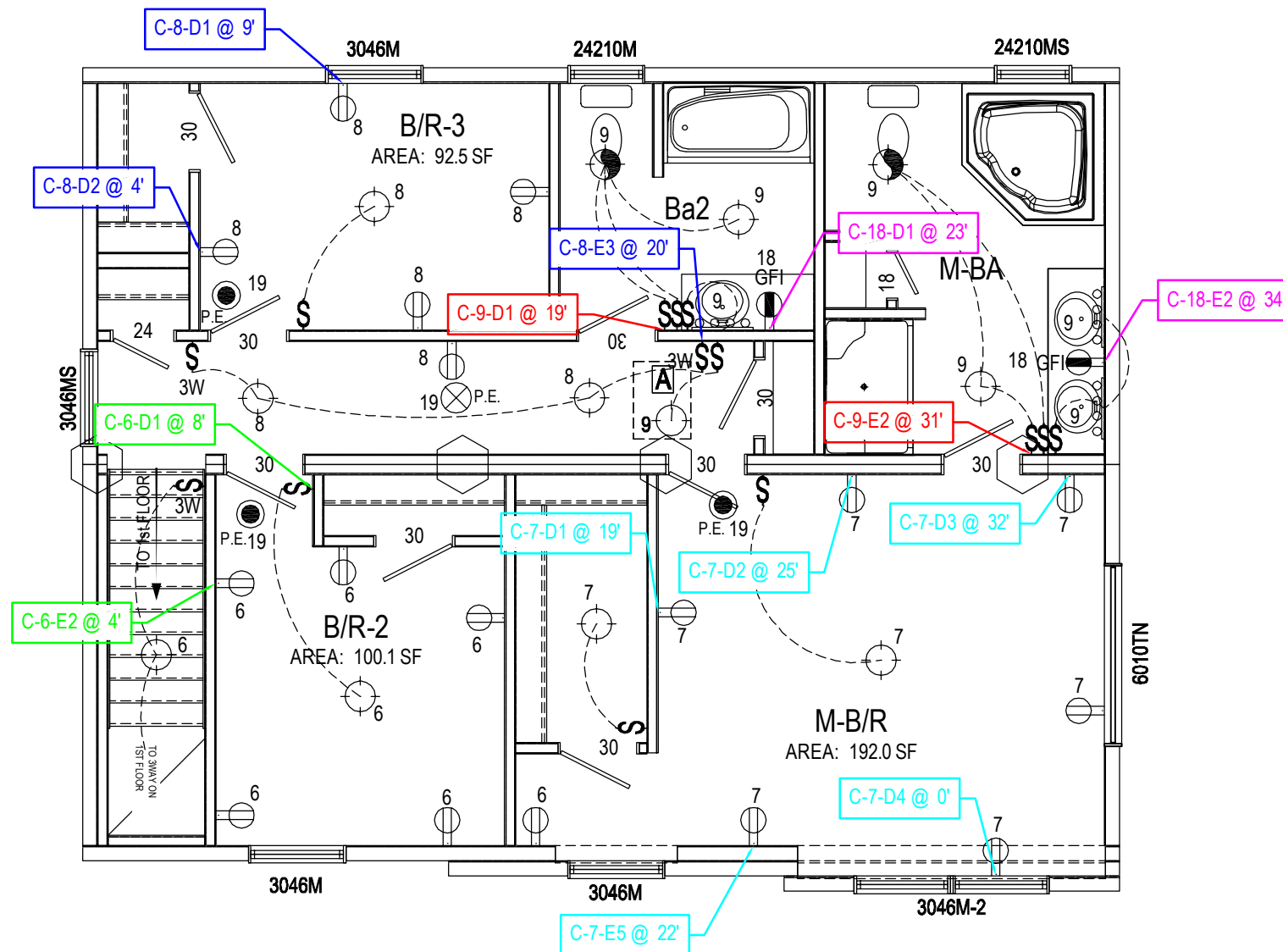


THESE PLANS HAVE BEEN EXTRACTED FROM APPROVED BUILDING SYSTEM DOCUMENTATION ON FILE WITH THE STATE. THE MANUFACTURER CERTIFIES THAT THIS STRUCTURE IS NOT A MANUFACTURED HOME SUBJECT TO THE PROVISIONS OF THE NATIONAL MANUFACTURING HOUSING CONSTRUCTION AND SAFETY STANDARDS ACT. DESIGNATED ONLY FOR ERECTION OR INSTALLATION ON A SITE-BUILT PERMANENT FOUNDATION; NOT DESIGNED TO BE MOVED ONCE ERECTED OR INSTALLED; DESIGNED AND MANUFACTURED TO COMPLY WITH A NATIONALLY RECOGNIZED MODEL BUILDING CODE OR AN EQUIVALENT TO BUILDING CODES FOR SITE-BUILT HOUSING OR WITH MINIMUM PROPERTY STANDARDS ADOPTED BY THE SECRETARY PURSUANT TO TITLE 2 OF THE NATIONAL HOUSING ACT; AND TO THE MANUFACTURER'S KNOWLEDGE IS NOT INTENDED TO BE USED OTHER THAN ON A SITE-BUILT PERMANENT FOUNDATION.

Builder: Pennwest Homes	Callout: 2634	Revisions	Scale: 3/16" = 1'-0"	Date: 03/18/2014	Cust: Stock	Model/Eng. No.: HZ106-A1
Title: Code		Date	Drawn By: MH	Reference: NONE	Dir: Schiavi Home Builders	Pg.: CODE
		Number			S/N:	

NOTE: RECEP.TS. IN OPT. F.P., LIBRARY, OR ENTER. CENTER AREA MAY NEED TO BE OMITTED ADDED OR MOVED

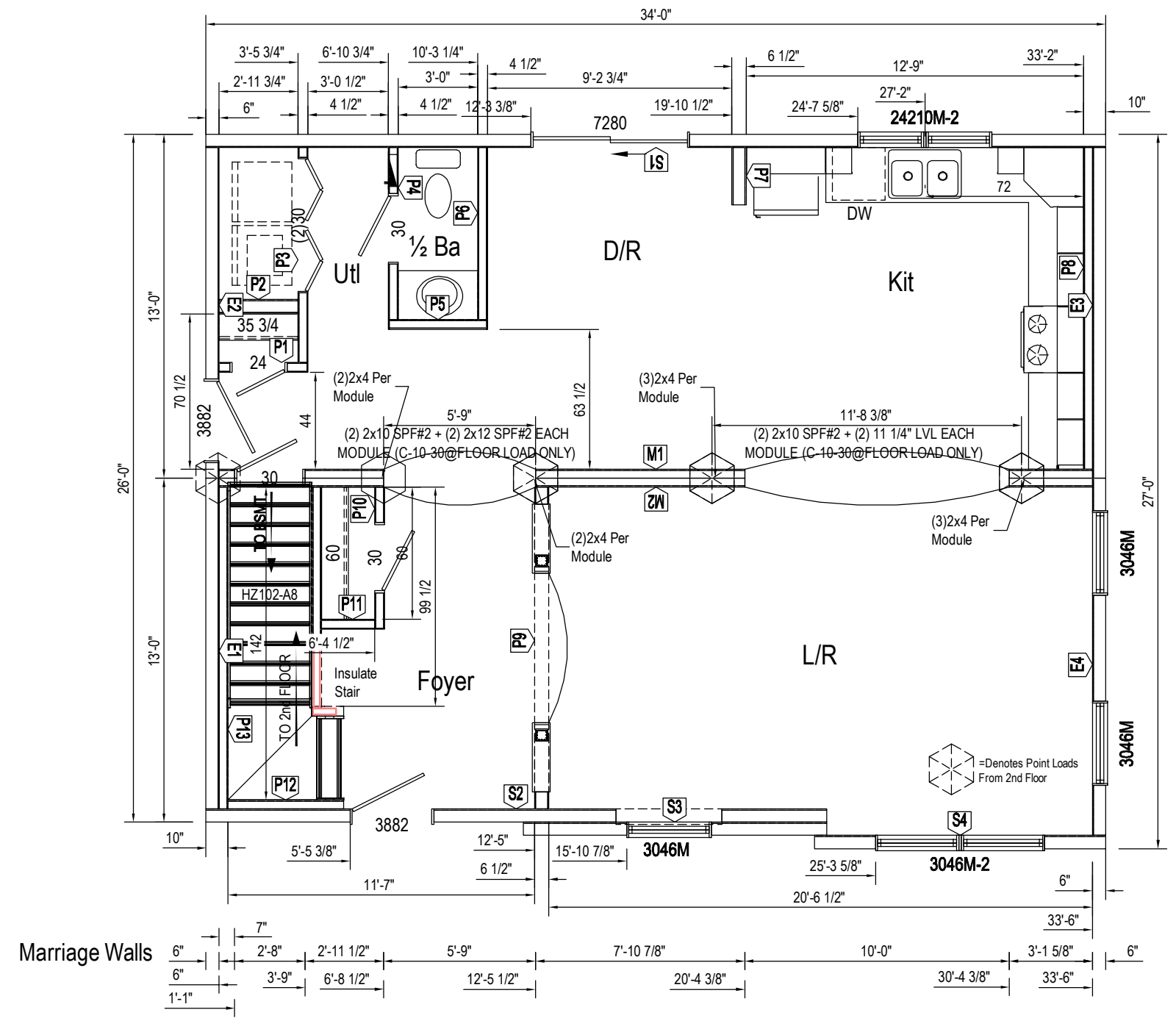
A = 22½x30½ ATTIC ACCESS
 AP = 22½x54 PULL DOWN ATTIC ACCESS



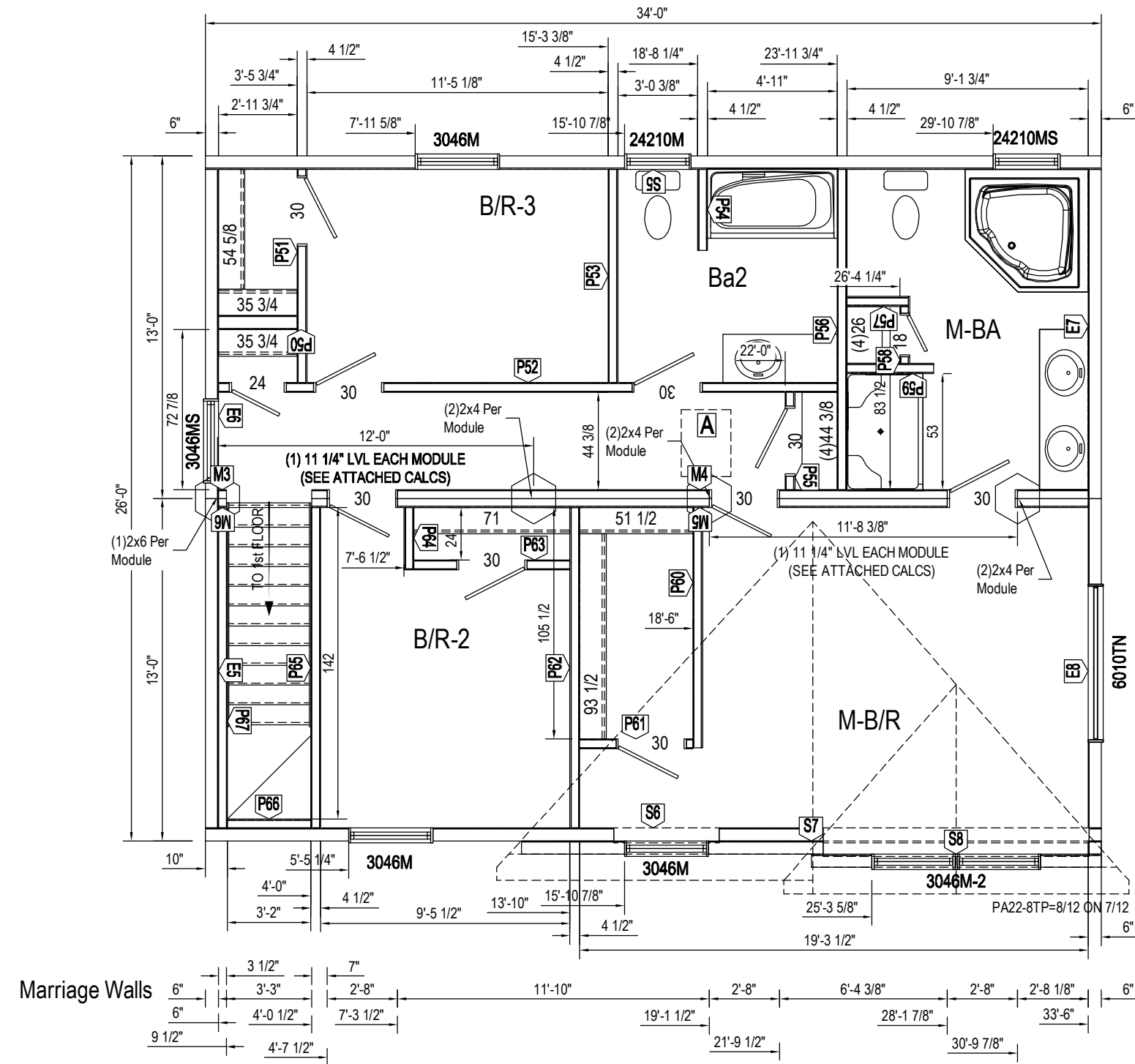
THESE PLANS HAVE BEEN EXTRACTED FROM APPROVED BUILDING SYSTEM DOCUMENTATION ON FILE WITH THE STATE. THE MANUFACTURER CERTIFIES THAT THIS STRUCTURE IS NOT A MANUFACTURED HOME SUBJECT TO THE PROVISIONS OF THE NATIONAL MANUFACTURING HOUSING CONSTRUCTION AND SAFETY STANDARDS ACT. DESIGNATED ONLY FOR ERECTION OR INSTALLATION ON A SITE-BUILT PERMANENT FOUNDATION; NOT DESIGNED TO BE MOVED ONCE ERECTED OR INSTALLED; DESIGNED AND MANUFACTURED TO COMPLY WITH A NATIONALLY RECOGNIZED MODEL BUILDING CODE OR AN EQUIVALENT TO BUILDING CODES FOR SITE-BUILT HOUSING, OR WITH MINIMUM PROPERTY STANDARDS ADAPTED BY THE SECRETARY PURSUANT TO TITLE 2 OF THE NATIONAL HOUSING ACT, AND TO THE MANUFACTURER'S KNOWLEDGE IS NOT INTENDED TO BE USED OTHER THAN ON A SITE-BUILT PERMANENT FOUNDATION.

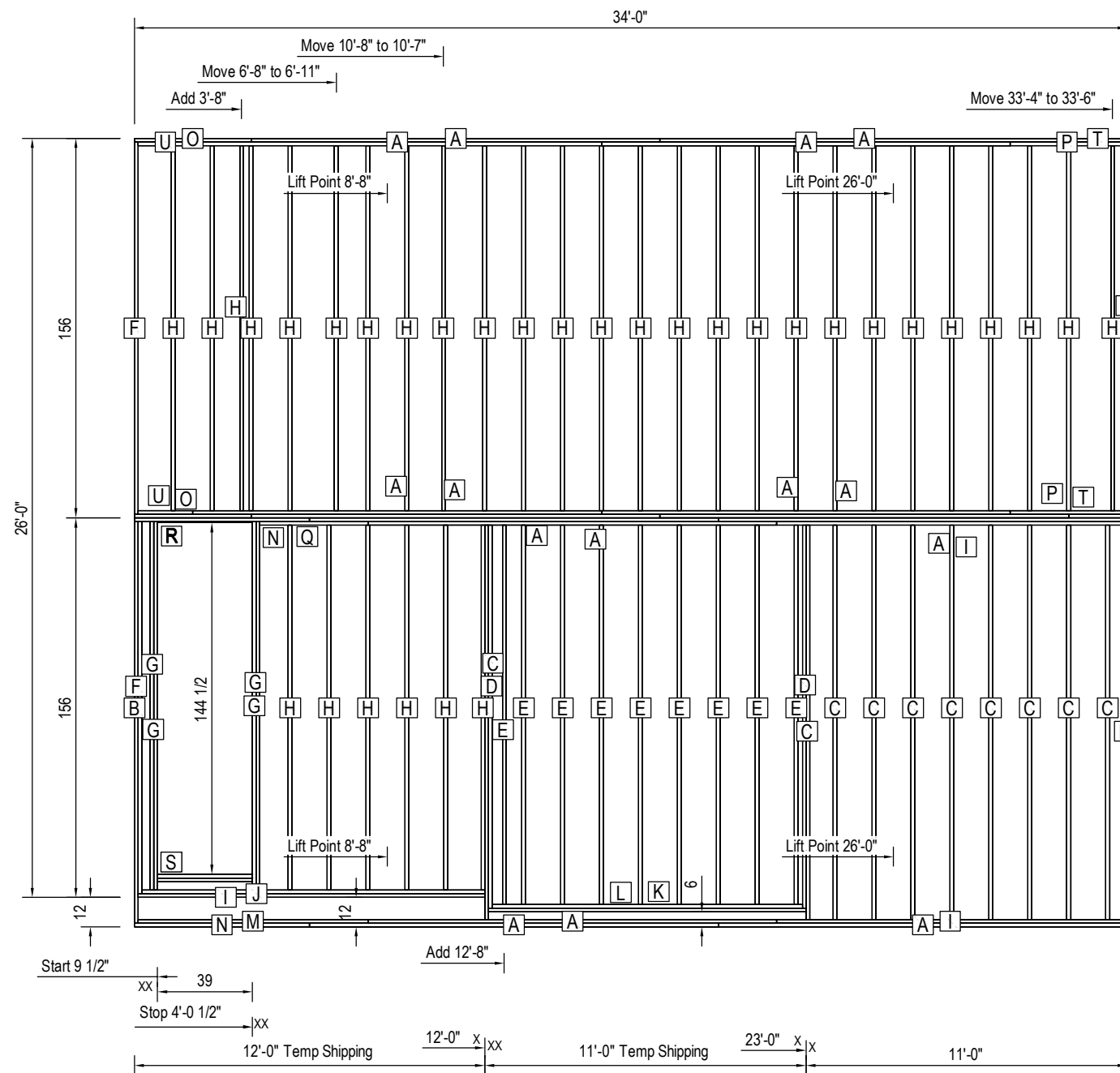
Builder: Pennwest Homes	Callout: 2634	Revisions	Scale: 3/16" = 1'-0"	Date: 03/18/2014	Cust: Stock	Model/Eng. No.: HZ106-A1
Title: Code 2		Date	Drawn By: MH	Reference: NONE	Dir: Schiavi Home Builders	Pg.: CODE-2
		Number			S/N:	

[A] = 22½x30½ ATTIC ACCESS
 [AP] = 22½x54 PULL DOWN ATTIC ACCESS



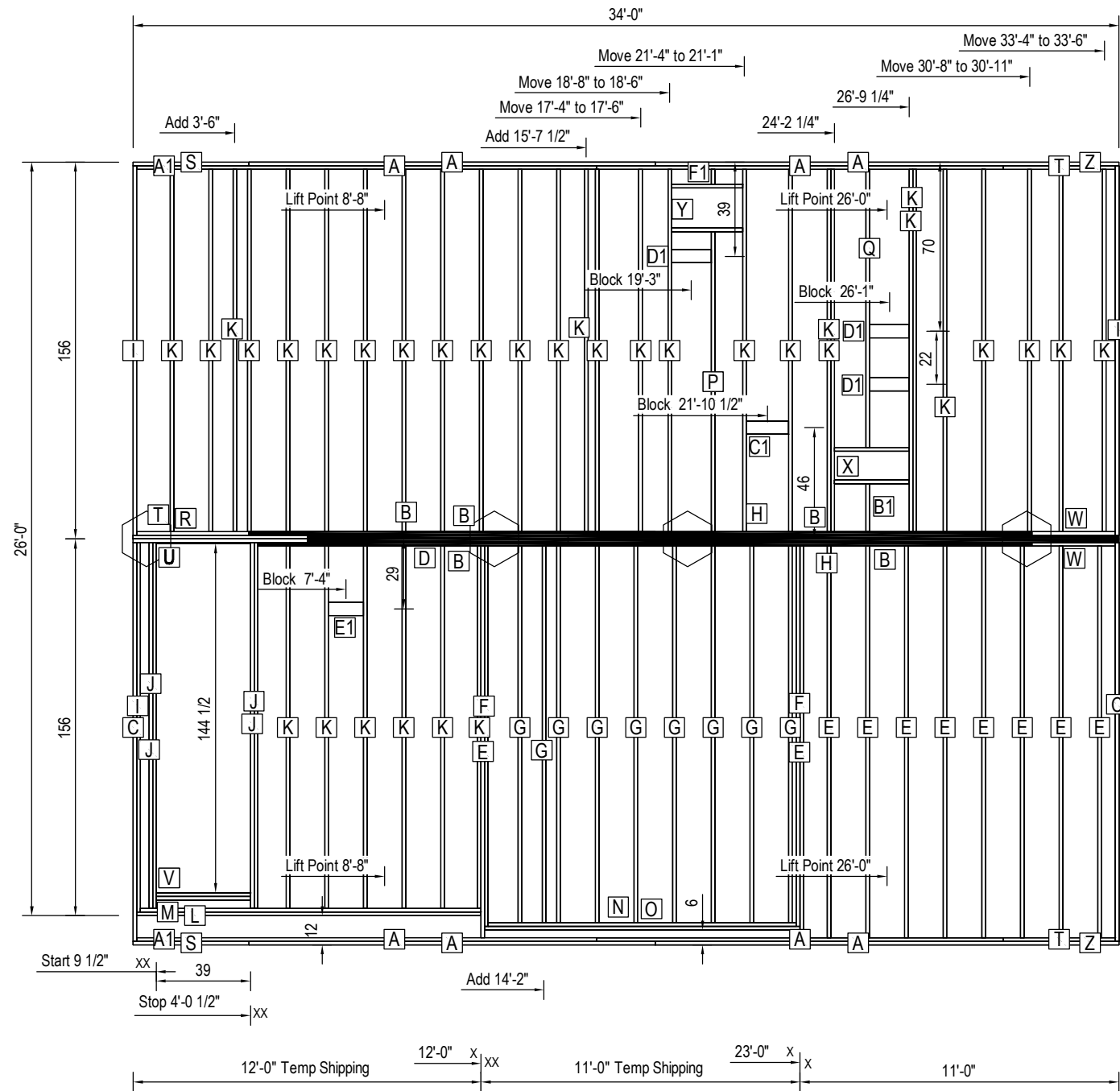
[A] = 22½x30½ ATTIC ACCESS
 [AP] = 22½x54 PULL DOWN ATTIC ACCESS





Floor Framing Cut List B BOX				
Lab	Qty	Mat'l	Description	Length
A	8	2x10	Joist	14'-0"
F	2	2x10	Joist	12'-9"
H	26	2x10	Joist	12'-6"
O	2	2x10	Joist	4'-0"
P	2	2x10	Joist	3'-10 1/2"
T	2	2x10	Joist	2'-0"
U	2	2x10	Joist	1'-10 1/2"

Floor Framing Cut List A BOX				
Lab	Qty	Mat'l	Description	Length
A	6	2x10	Joist	14'-0"
B	2	2x10	Joist	13'-9"
C	10	2x10	Joist	13'-6"
D	2	2x10	Joist	13'-1 1/2"
E	9	2x10	Joist	13'-0"
F	1	2x10	Joist	12'-9"
G	4	2x10	Joist	12'-7 1/2"
H	6	2x10	Joist	12'-6"
I	3	2x10	Joist	11'-10 1/2"
J	1	2x10	Joist	11'-9"
K	1	2x10	Joist	10'-10 1/2"
L	1	2x10	Joist	10'-7 1/2"
M	1	2x10	Joist	7'-10 1/2"
N	2	2x10	Joist	6'-0"
Q	1	2x10	Joist	3'-8 1/2"
R	1	1/2 Ply	Shim	3'-3"
S	2	2x10	Block	3'-3"

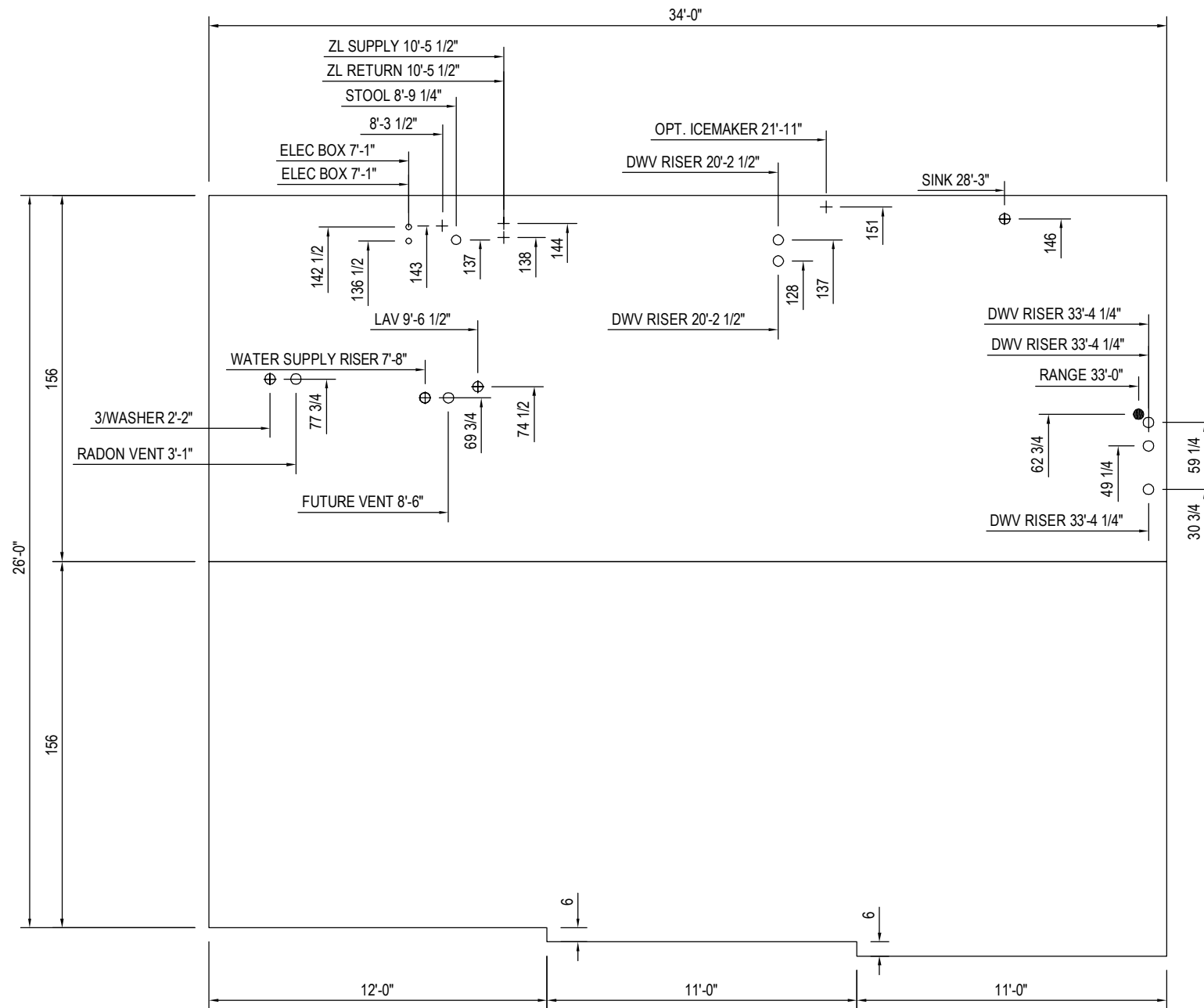


Floor Framing Cut List B BOX

Lab	Qty	Mat'l	Description	Length
A	4	2x10	Joist	14'-0"
B	3	1.50x9.25 LVL	Joist	14'-0"
H	1	1.50x9.25 LVL	Joist	13'-0"
I	2	2x10	Joist	12'-9"
K	27	2x10	Joist	12'-6"
P	1	2x10	Joist	10'-4 1/4"
Q	1	2x10	Joist	9'-7 1/4"
R	1	2x10	Joist	6'-0"
S	1	2x10	Joist	4'-0"
T	2	2x10	Joist	3'-10 1/2"
W	1	2x10	Joist	2'-10 1/2"
X	2	2x10	Block	2'-7"
Y	2	2x10	Block	2'-5 1/2"
Z	1	2x10	Joist	2'-0"
A1	1	2x10	Joist	1'-10 1/2"
B1	1	2x10	Joist	1'-7 3/4"
C1	1	2x6	Block Lay Flat	1'-5 1/2"
D1	3	2x6	Block Lay Flat	1'-4 1/2"
F1	1	2x10	Joist	6 1/4"

Floor Framing Cut List A BOX

Lab	Qty	Mat'l	Description	Length
A	4	2x10	Joist	14'-0"
B	2	1.50x9.25 LVL	Joist	14'-0"
C	2	2x10	Joist	13'-9"
D	1	1.50x9.25 LVL	Joist	13'-8 1/2"
E	10	2x10	Joist	13'-6"
F	2	2x10	Joist	13'-1 1/2"
G	9	2x10	Joist	13'-0"
H	1	1.50x9.25 LVL	Joist	13'-0"
I	1	2x10	Joist	12'-9"
J	4	2x10	Joist	12'-7 1/2"
K	6	2x10	Joist	12'-6"
L	1	2x10	Joist	11'-10 1/2"
M	1	2x10	Joist	11'-9"
N	1	2x10	Joist	10'-10 1/2"
O	1	2x10	Joist	10'-7 1/2"
R	1	2x10	Joist	6'-0"
S	1	2x10	Joist	4'-0"
T	1	2x10	Joist	3'-10 1/2"
U	1	1/2 Ply	Shim	3'-3"
V	2	2x10	Block	3'-3"
W	1	2x10	Joist	2'-10 1/2"
Z	1	2x10	Joist	2'-0"
A1	1	2x10	Joist	1'-10 1/2"
E1	1	2x6	Block Lay Flat	1'-2 1/2"

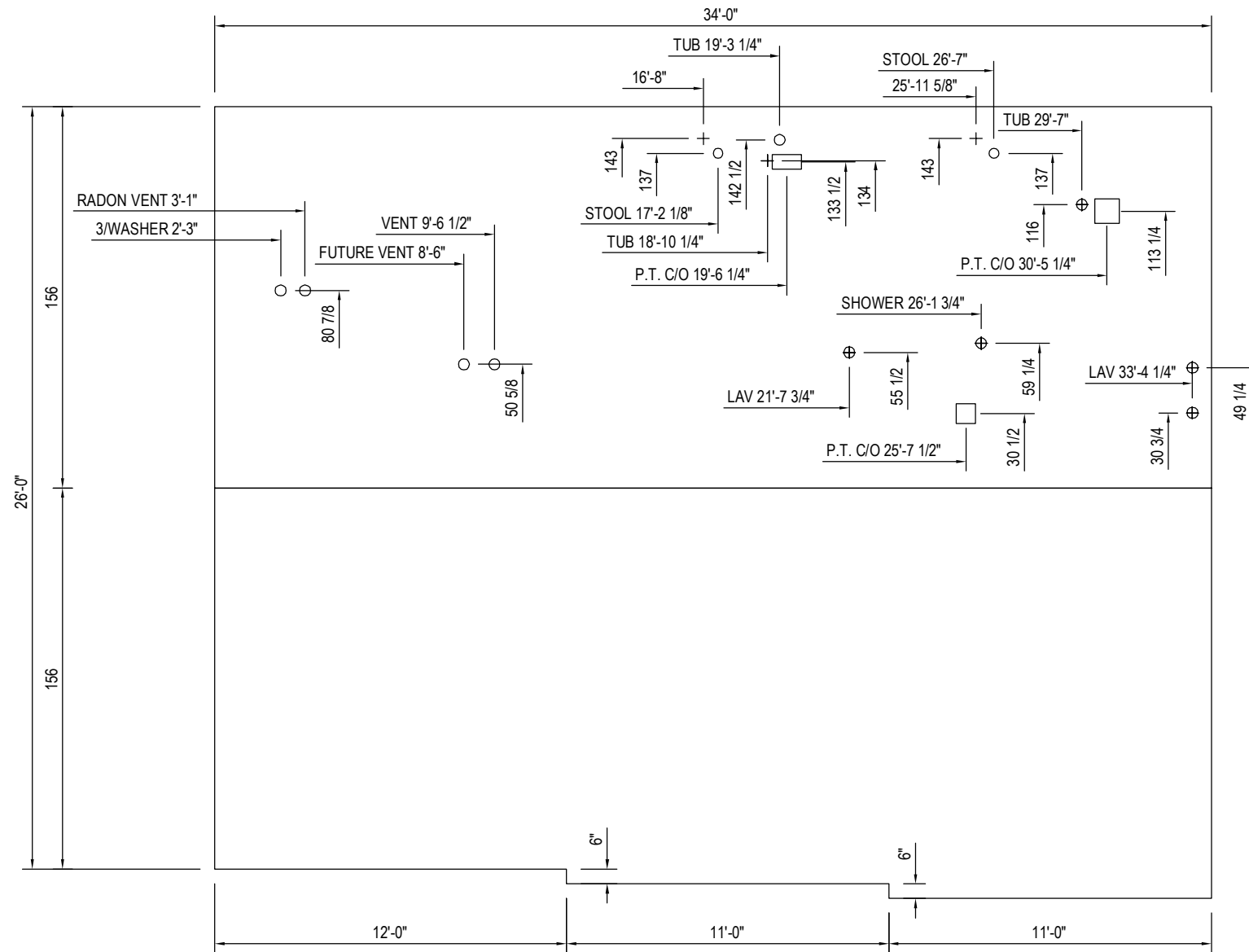


⊕ DENOTES DRAIN, WASTE, & VENT
 + DENOTES HOT & COLD WATER LINE
 ● DENOTES GAS LINE # = 4x3 CB

TOTAL FLOOR AREA: XX'-X" x XX'-X"
 BOTTOM BOARD ACCESS LOCATED DIRECTLY UNDER P-TRAP CUT-OUT UNLESS NOTED

REFER TO INLINE OR PERIMETER HEAT DUCT DRAWING FOR REGISTER CUT-OUTS & HOLE IN FLOOR TOE KICK REGISTER APPL.

Builder: Pennwest Homes	Callout: 2634	Revisions	Scale: 3/16" = 1'-0"	Date: 03/18/2014	Cust: Stock	Model/Eng. No.: HZ106-A1
Title: Floor Cut-Outs		Date	Drawn By: MH	Reference: NONE	Dir: Schiavi Home Builders	Pg.: FCO



⊕ DENOTES DRAIN, WASTE, & VENT
 + DENOTES HOT & COLD WATER LINE
 ● DENOTES GAS LINE # = 4x3 CB

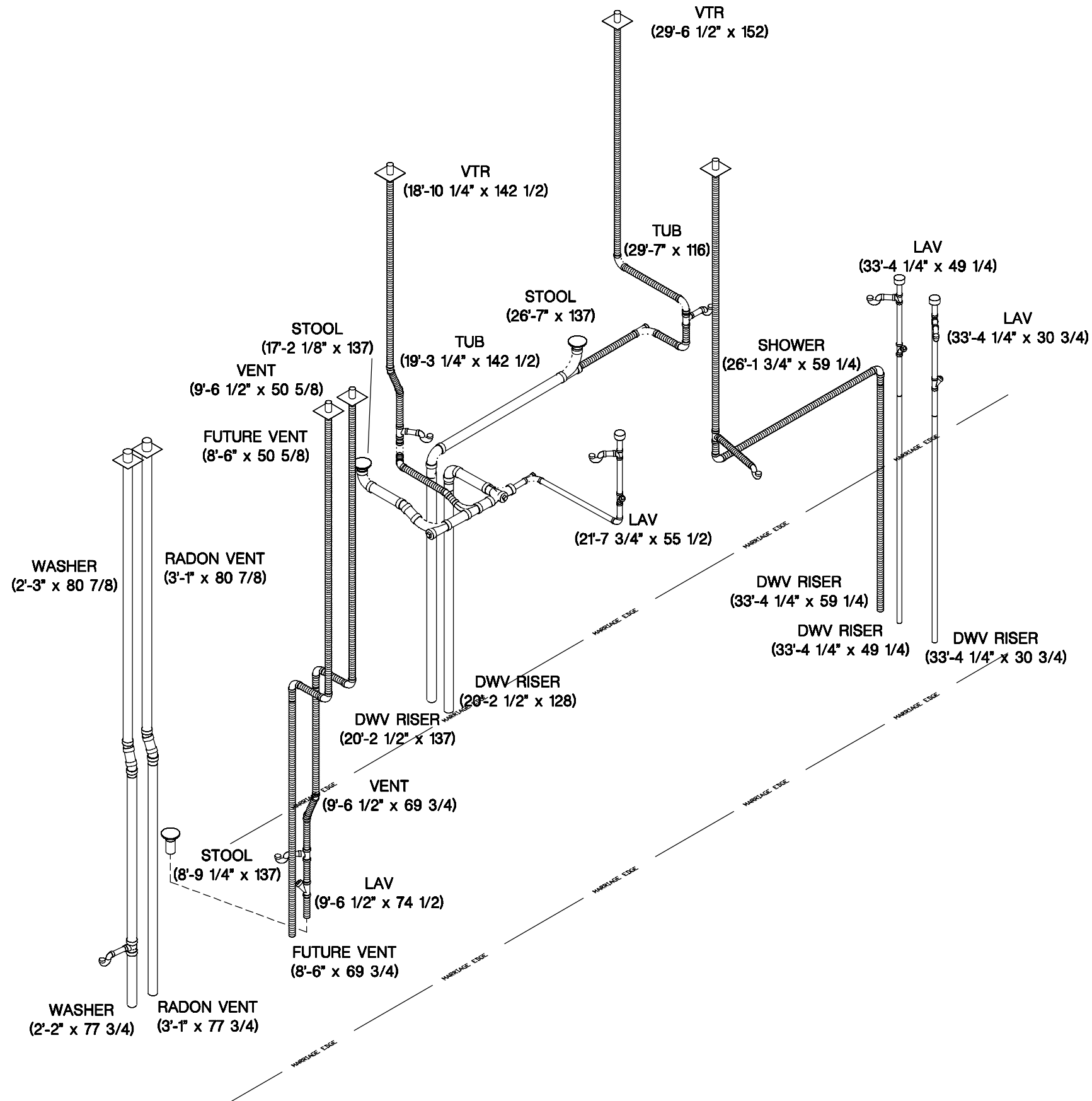
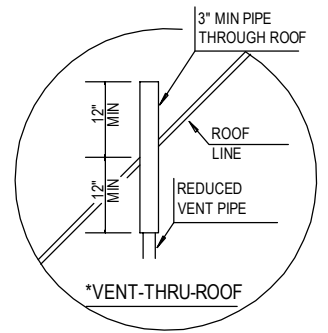
TOTAL FLOOR AREA: XX'-X" x XX'-X"
 BOTTOM BOARD ACCESS LOCATED DIRECTLY
 UNDER P-TRAP CUT-OUT UNLESS NOTED

REFER TO INLINE OR PERIMETER HEAT
 DUCT DRAWING FOR REGISTER CUT-OUTS &
 HOLE IN FLOOR TOE KICK REGISTER APPL.

Builder: Pennwest Homes	Callout: 2634	Revisions	Scale: 3/16" = 1'-0"	Date: 03/18/2014	Cust: Stock	Model/Eng. No.: HZ106-A1
Title: Floor Cut-Outs 2		Date	Drawn By: MH	Reference: NONE	Dir: Schiavi Home Builders	Pg.: FCO-2
		Number			S/N:	

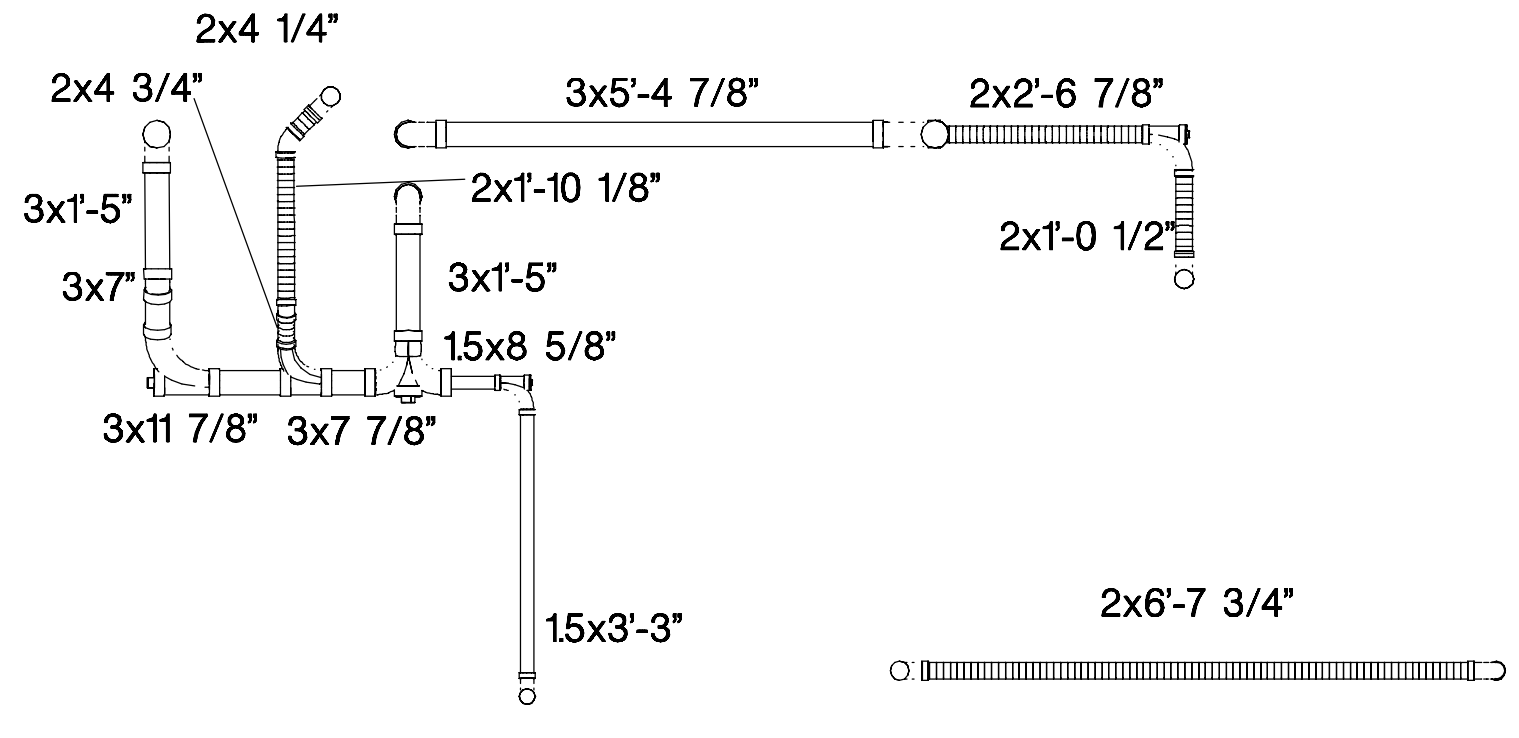
NOTE:

1. ALL LINES 1/4" SLOPE/FOOT MIN. UNLESS OTHERWISE NOTED.
2. ←○→ DENOTES 1/8" SLOPE/FOOT.
3. ALL 2" DIA. LINES SHOWN FILLED (BOLD).
4. ALL LINES 1-1/2" DIA. MINIMUM OTHERWISE NOTED.
5. LINES SERVING STOOL ARE 3" DIA. CONTINUOUS TO OUTLET.
6. AIR ADMITTANCE VALVES SHOWN ARE IN ACCORDANCE w/ASSE 1051 & MANUFACTURER'S INSTRUCTIONS.
7. VENT STACK MUST BE A MIN. DIAMETER OF 3" WHEREVER IT EXTENDS THROUGH ROOF TO OUTSIDE. A REDUCER MAY BE INSTALLED WHERE STACK IS LESS THAN 3" OFF ITS RESPECTIVE FIXTURE.
8. CONTINUOUS WASTE APPL. ON SINKS AND LAVATORIES WHERE SPACING DOES NOT EXCEED 30".
9. PER APPLICABLE CODE, INSTALL CLEANOUT AT THE BASE OF EACH VERTICAL WASTE OR SOIL STACK.


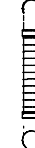


ALL DIM. FROM REAR & MARRIAGE EDGE

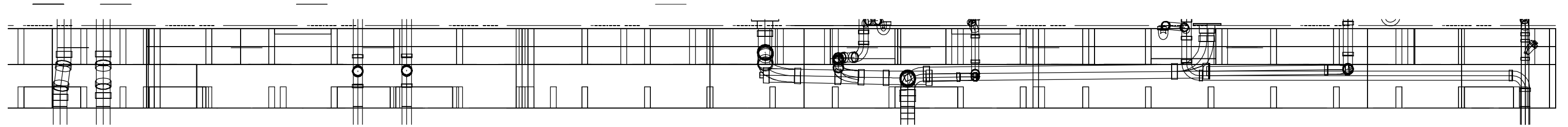
HANGER SPACING - DRAIN PIPE (DWV)	
MAX HORIZONTAL SPACING (FT.)	VERTICAL SPACING
4'-0"	Vertical piping shall be supported at each story or floor level.



3x7"   3x6 1/2"

2x1'-0 1/2"   2x1'-0 1/2"

MARRIAGE EDGE MARRIAGE EDGE MARRIAGE EDGE MARRIAGE EDGE MARRIAGE EDGE MARRIAGE EDGE MARRIAGE EDGE MARRIAGE EDGE MARRIAGE EDGE MARRIAGE EDGE



Builder: Pennwest Homes

Title: Front

Callout:
2634

Revisions	
Date	Number
.	.
.	.
.	.
.	.

Scale:
1'-0" = 1'-0"

Drawn By:

Date:

Reference:
NONE

Cust: Stock

Dir: Schiavi Home Builders

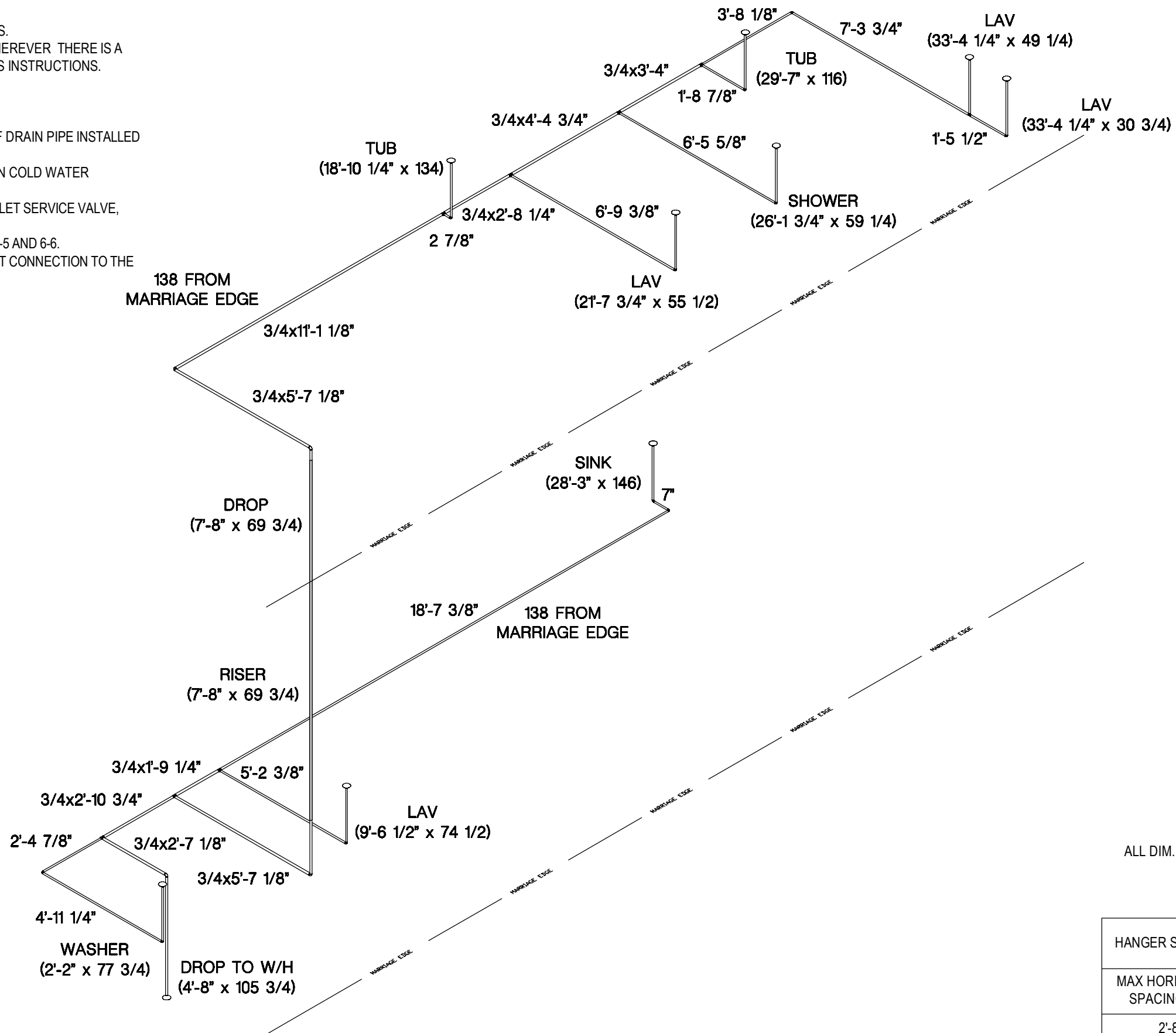
S/N:

Model/Eng. No.:

HZ106-A1

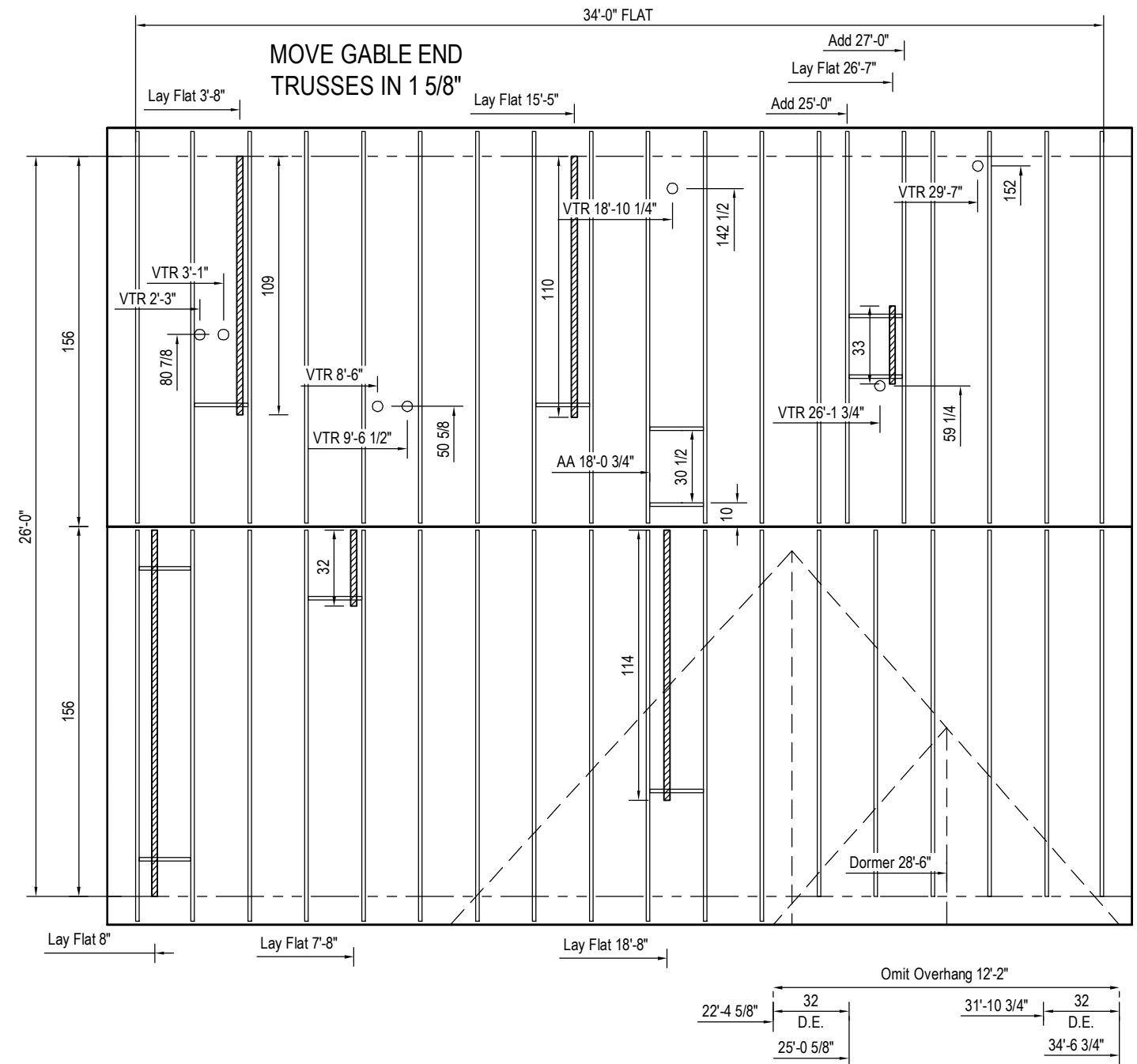
Pg.: FRONT

- NOTE:
1. 3/4" I.D. GALVANIZED, OR COPPER RELIEF DRAIN (NOT SHOWN) THRU FLOOR w/VISIBLE AIR GAP
 2. INLET WITH 1" CAP & CHAIN.
 3. ALL WATER SUPPLY PIPING CONSTRUCTED OF PEX MATERIAL
 4. ANTI-SCALD DEVICE ON ALL SHOWER, AND TUB/SHOWER COMBINATIONS.
 5. WATER-HAMMER ARRESTORS AT BATTERY OF FIXTURES INSTALLED WHEREVER THERE IS A QUICK-CLOSING VALVE CONFORMING TO ASSE 1010 & MANUFACTURER'S INSTRUCTIONS.
 6. SHUT-OFF VALVE IS REQUIRED AT EACH FIXTURE
 7. BATHROOMS WITH DOUBLE LAVS ARE FED FROM THE SAME RISER.
 8. ANY LINE NOT LABELED IS 1/2" I.D.
 9. WATER HEATER TEMPERATURE & PRESSURE RELIEF VALVE AND RELIEF DRAIN PIPE INSTALLED PER MANUFACTURER'S SPECIFICATIONS.
 10. SHUT-OFF VALVE AT WATER HEATER IS FULL OPEN VALVE INSTALLED ON COLD WATER SUPPLY PIPE AT EACH WATER HEATER, PER CODE.
 11. FULLWAY SHUT-OFF VALVE WITH BLEED ORIFICE INSTALLED AT MAIN INLET SERVICE VALVE, INSTALLED ON-SITE, PER CODE.
 12. WATER LINE SIZING SHALL BE DONE IN ACCORDANCE TO UPC TABLES 6-5 AND 6-6.
 13. METAL PIPING SHALL BE INSTALLED FOR A MINIMUM DISTANCE OF 18" AT CONNECTION TO THE WATER HEATER PER UPC 604.11.2.



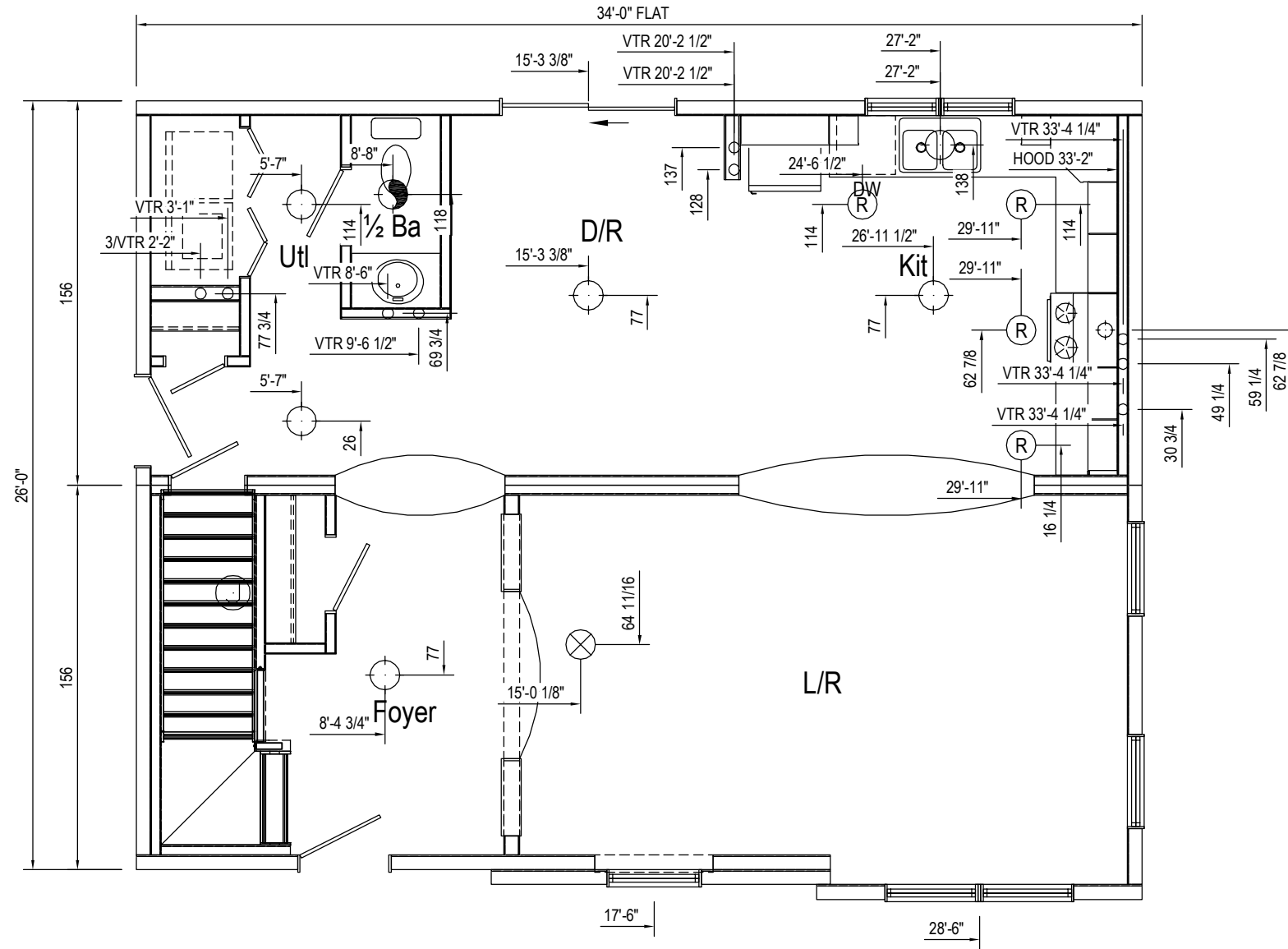
ALL DIM. FROM REAR & MARRIAGE EDGE

HANGER SPACING - PEX PIPE (SUPPLY)	
MAX HORIZONTAL SPACING (FT.)	MAX VERTICAL SPACING (FT.)
2'-8"	4'-0"



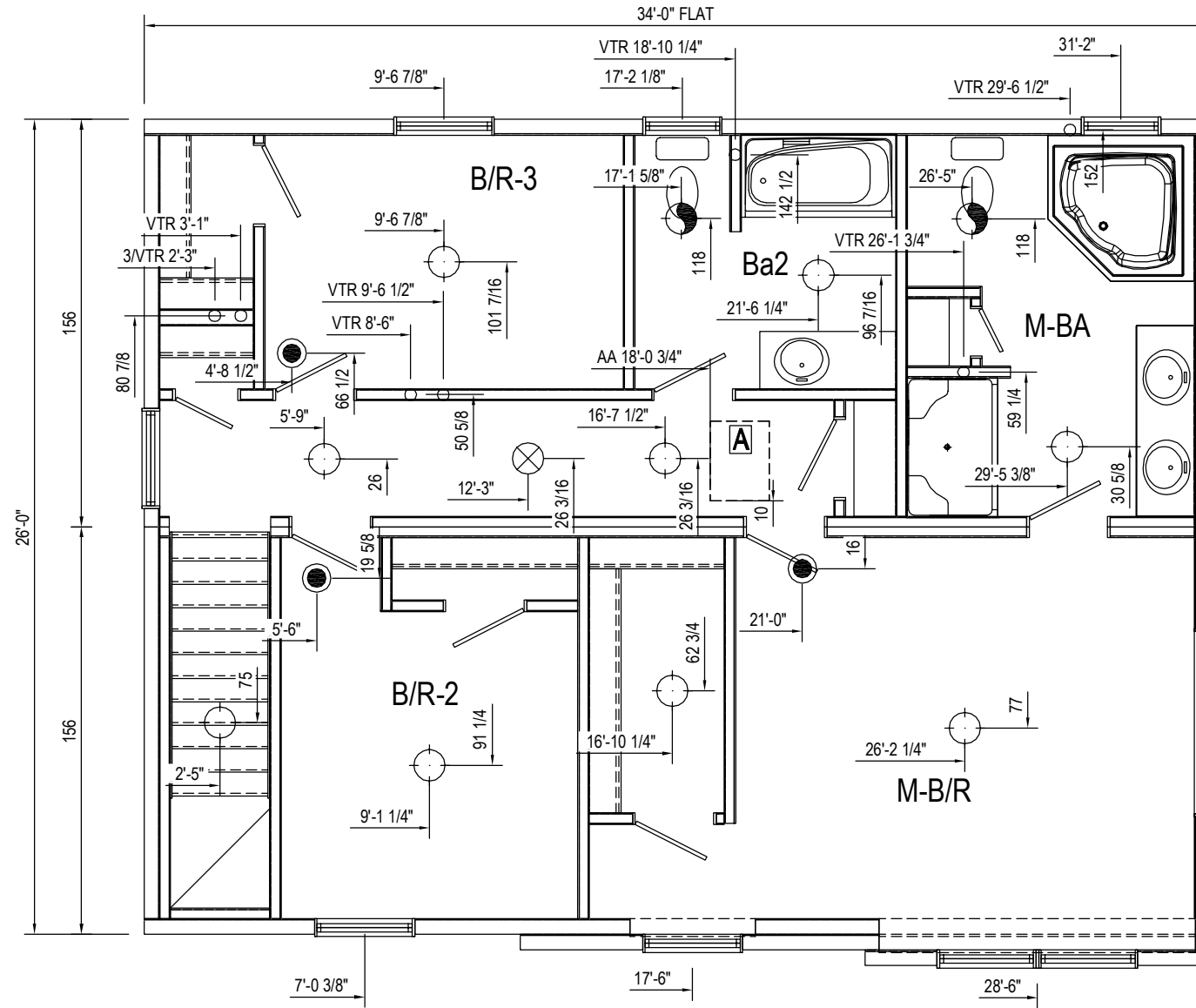
[A] = 22½x30½ ATTIC ACCESS
 [AP] = 22½x54 PULL DOWN ATTIC ACCESS

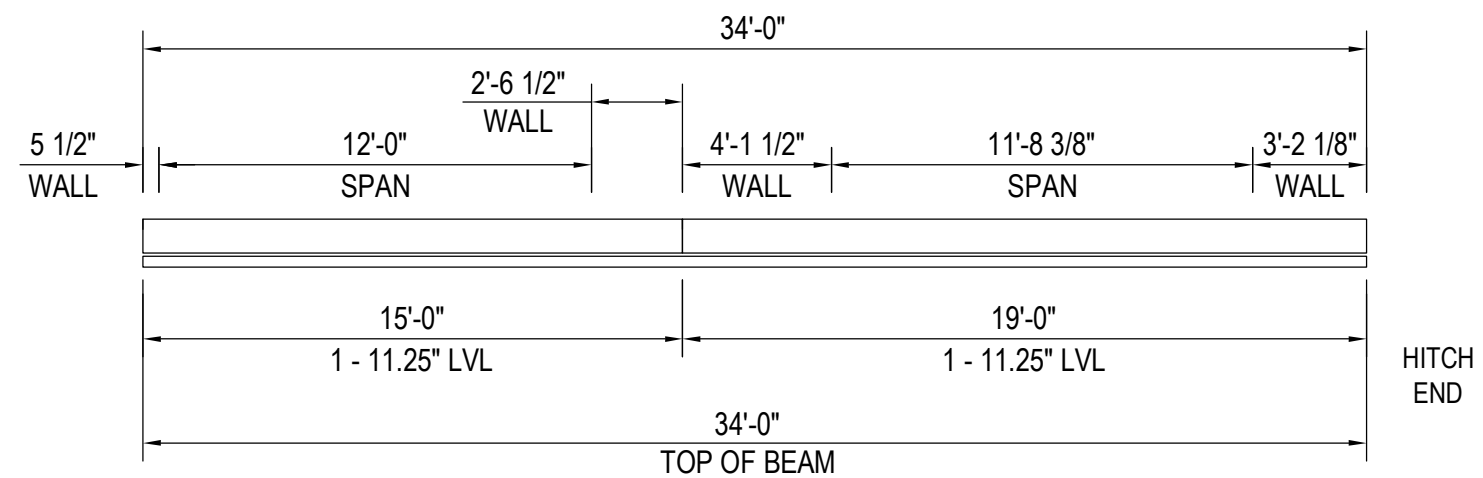
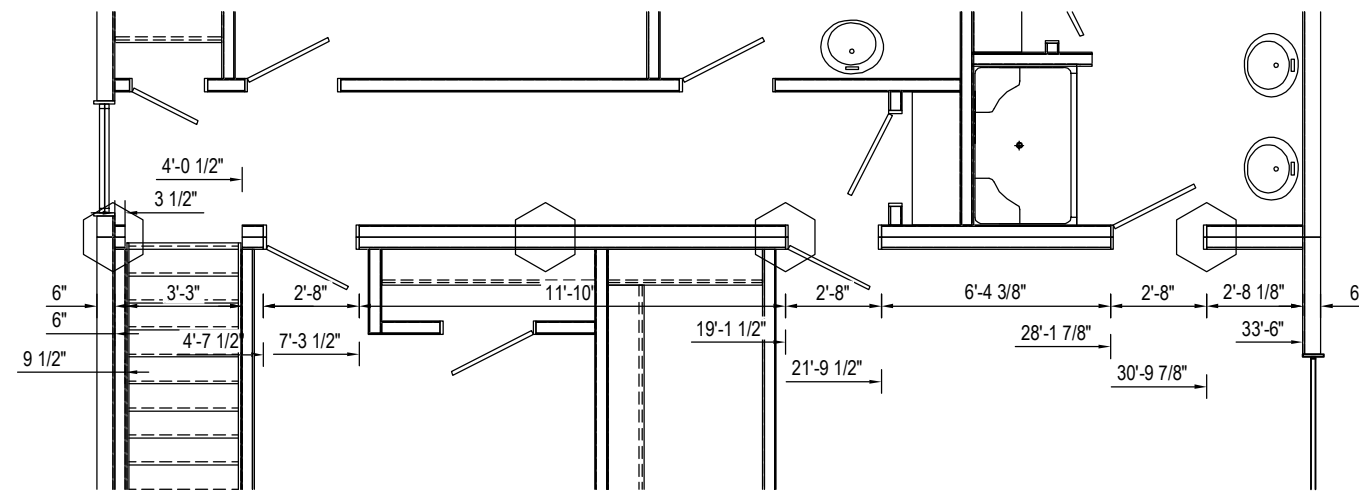
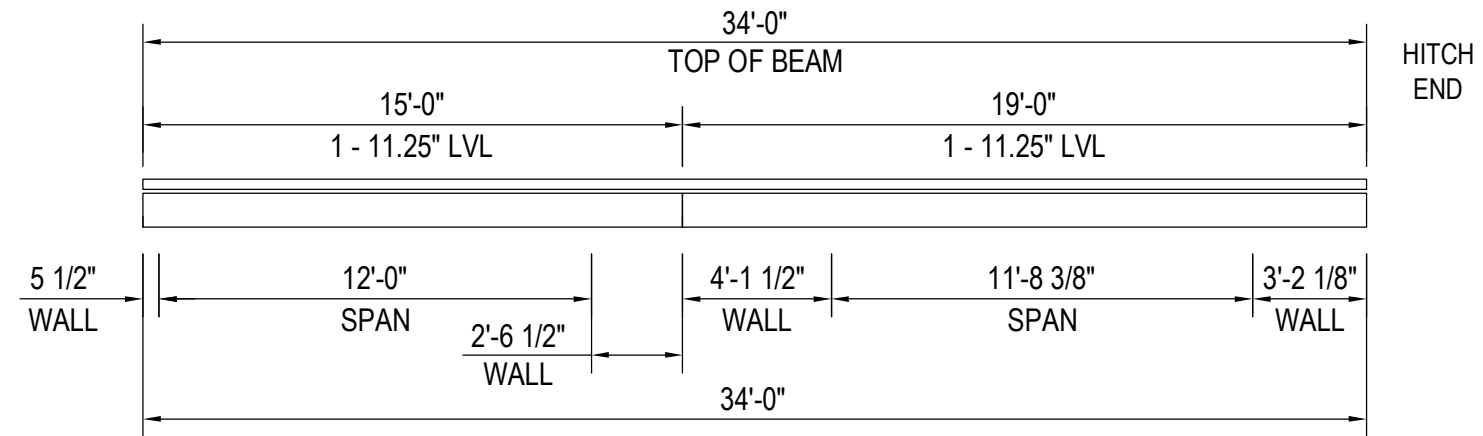
SEE CEILING RETURN AIR SYSTEM SHEET (IF APPLICABLE)
 FOR ADDITIONAL REQUIRED RETURN AIR CUTOUTS.



[A] = 22½x30½ ATTIC ACCESS
 [AP] = 22½x54 PULL DOWN ATTIC ACCESS

SEE CEILING RETURN AIR SYSTEM SHEET (IF APPLICABLE)
 FOR ADDITIONAL REQUIRED RETURN AIR CUTOUTS.





▲ = SPLICE BLOCK LOCATIONS (IF APPLICABLE).

Builder: Pennwest Homes

Title: Ridge Beam 40 PSF

Callout: 2634

Revisions	
Date	Number

Scale: 3/16" = 1'-0"

Date: 03/18/2014

Drawn By: MH

Reference: NONE

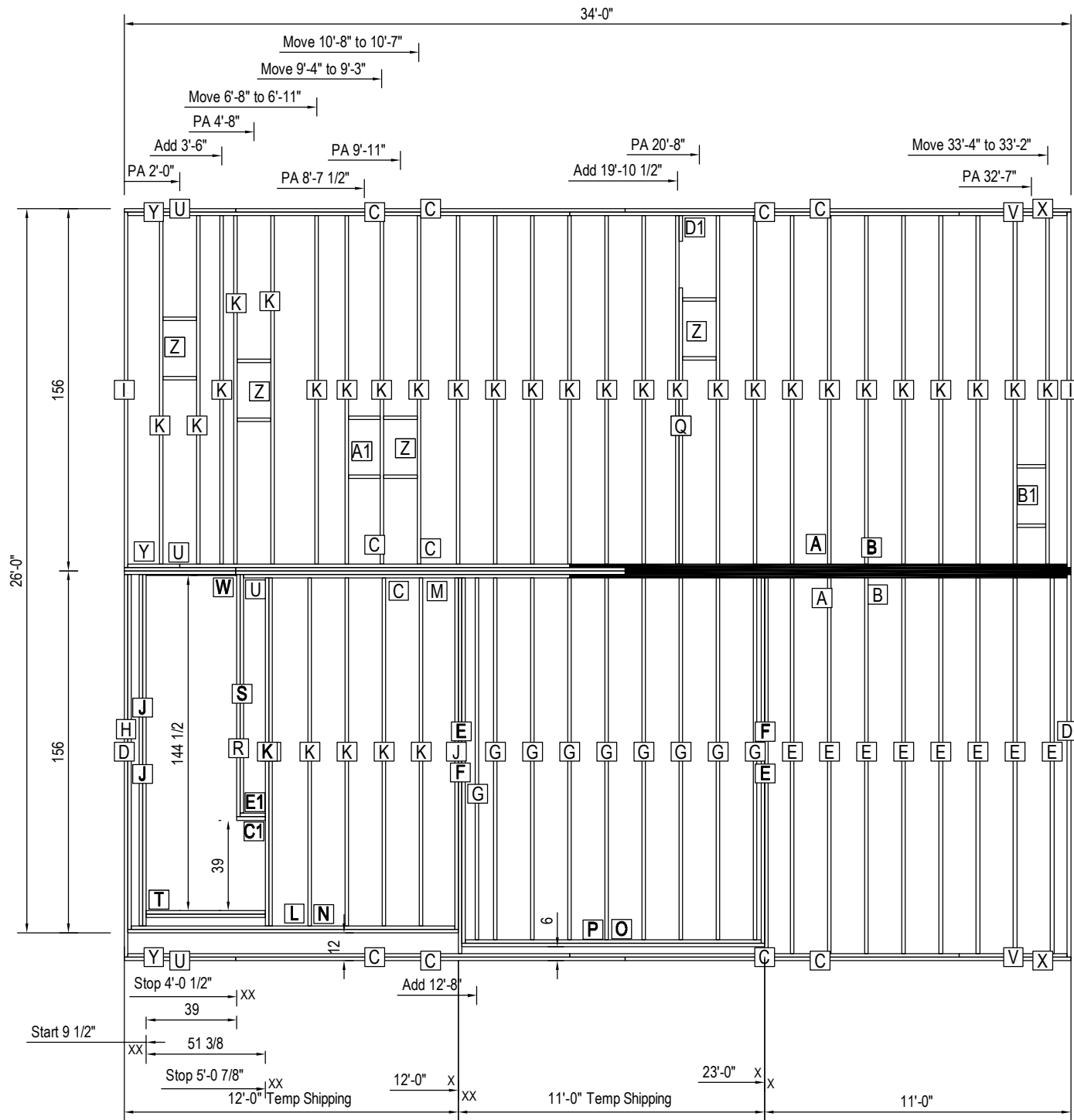
Cust: Stock

Dir: Schiavi Home Builders

S/N: .

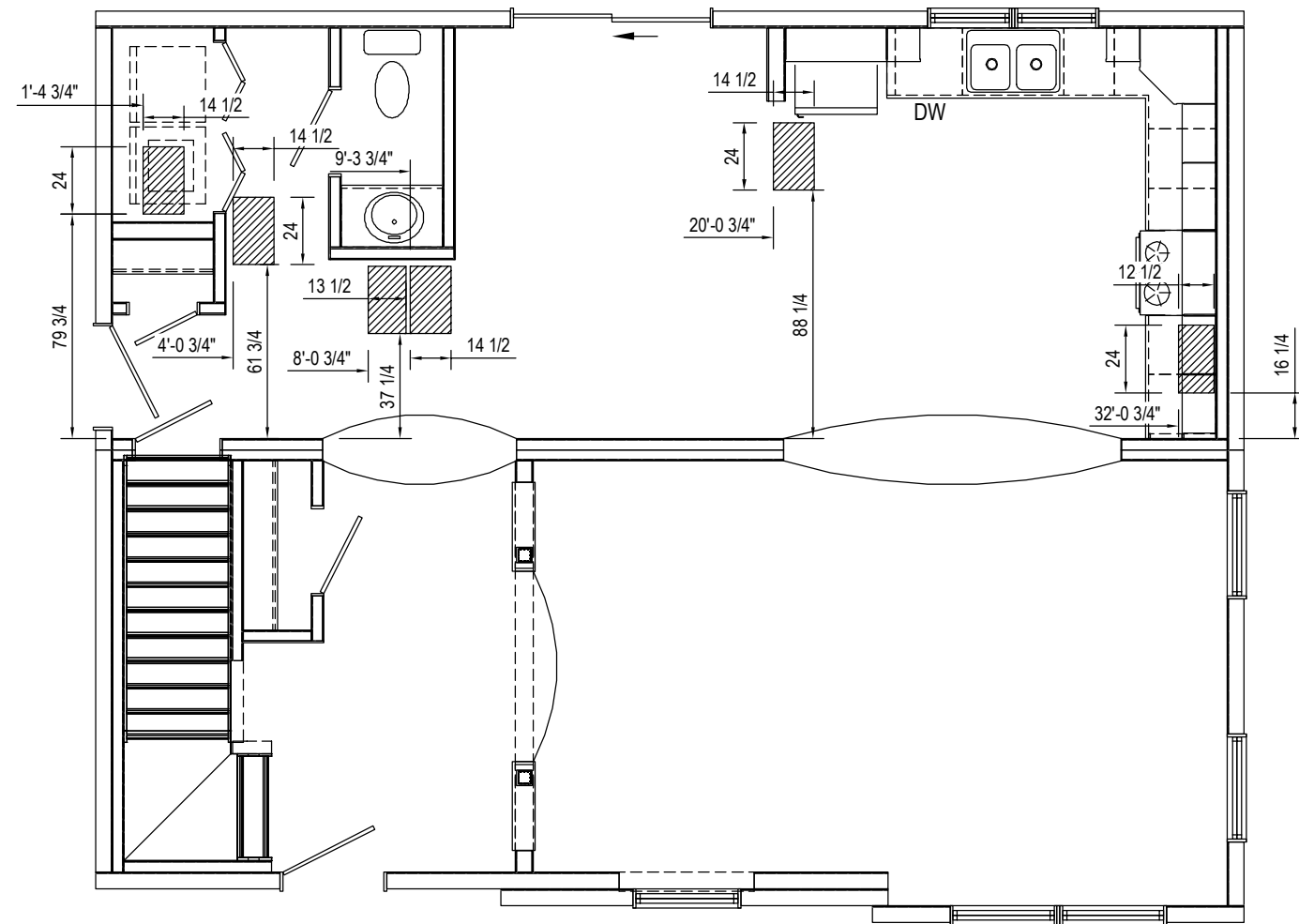
Model/Eng. No.: HZ106-A1

Pg.: RB40#



Floor Framing Cut List B BOX				
Lab	Qty	Mat'l	Description	Length
A	1	1.50x11.25 LVL	Joist	17'-10 1/2"
B	1	1.50x11.25 LVL	Joist	16'-0"
C	6	2x12	Joist	14'-0"
I	2	2x12	Joist	12'-9"
K	26	2x6	Joist	12'-6"
Q	1	2x6	Joist	9'-11"
U	2	2x12	Joist	4'-0"
V	1	2x12	Joist	3'-10 1/2"
X	1	2x12	Joist	2'-0"
Y	2	2x12	Joist	1'-10 1/2"
Z	8	2x6	Block	1'-2 1/2"
A1	2	2x6	Block	1'-1 1/2"
B1	2	2x6	Block	1'-0 1/2"
D1	1	2x6	Joist	11"

Floor Framing Cut List A BOX				
Lab	Qty	Mat'l	Description	Length
A	1	1.50x11.25 LVL	Joist	17'-10 1/2"
B	1	1.50x11.25 LVL	Joist	16'-0"
C	5	2x12	Joist	14'-0"
D	2	2x12	Joist	13'-9"
E	10	2x6	Joist	13'-6"
F	2	2x6	Joist	13'-1 1/2"
G	9	2x6	Joist	13'-0"
H	1	2x6	Joist	12'-9"
J	3	2x6	Joist	12'-7 1/2"
K	6	2x6	Joist	12'-6"
L	1	2x12	Joist	11'-10 1/2"
M	1	2x12	Joist	11'-8 1/2"
N	1	2x12	Joist	11'-7 1/2"
O	1	2x12	Joist	10'-10 1/2"
P	1	2x12	Joist	10'-7 1/2"
R	1	2x6	Joist	8'-8 1/2"
S	1	2x6	Joist	8'-7"
T	2	2x12	Joist	4'-3 3/8"
U	2	2x12	Joist	4'-0"
V	1	2x12	Joist	3'-10 1/2"
W	1	1/2 Ply	Shim	3'-3"
X	1	2x12	Joist	2'-0"
Y	1	2x12	Joist	1'-10 1/2"
C1	1	2x12	Joist	1'-0 3/8"
E1	1	2x12	Joist	10 7/8"



Builder: Pennwest Homes

Title: Access

Callout: 2634

Revisions	
Date	Number

Scale: 1'-0" = 1'-0"

Drawn By:

Date:

Reference: NONE

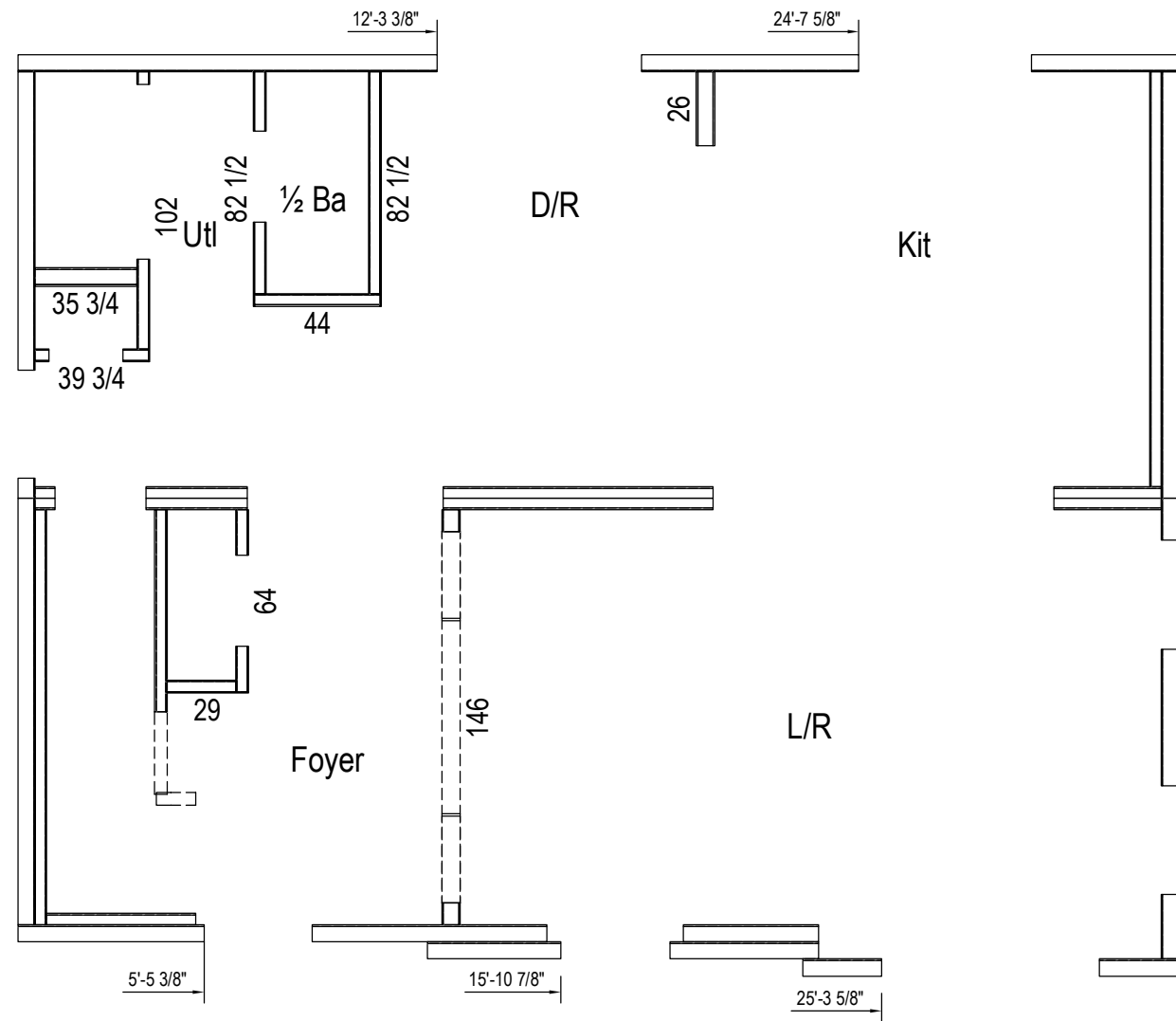
Cust: Stock

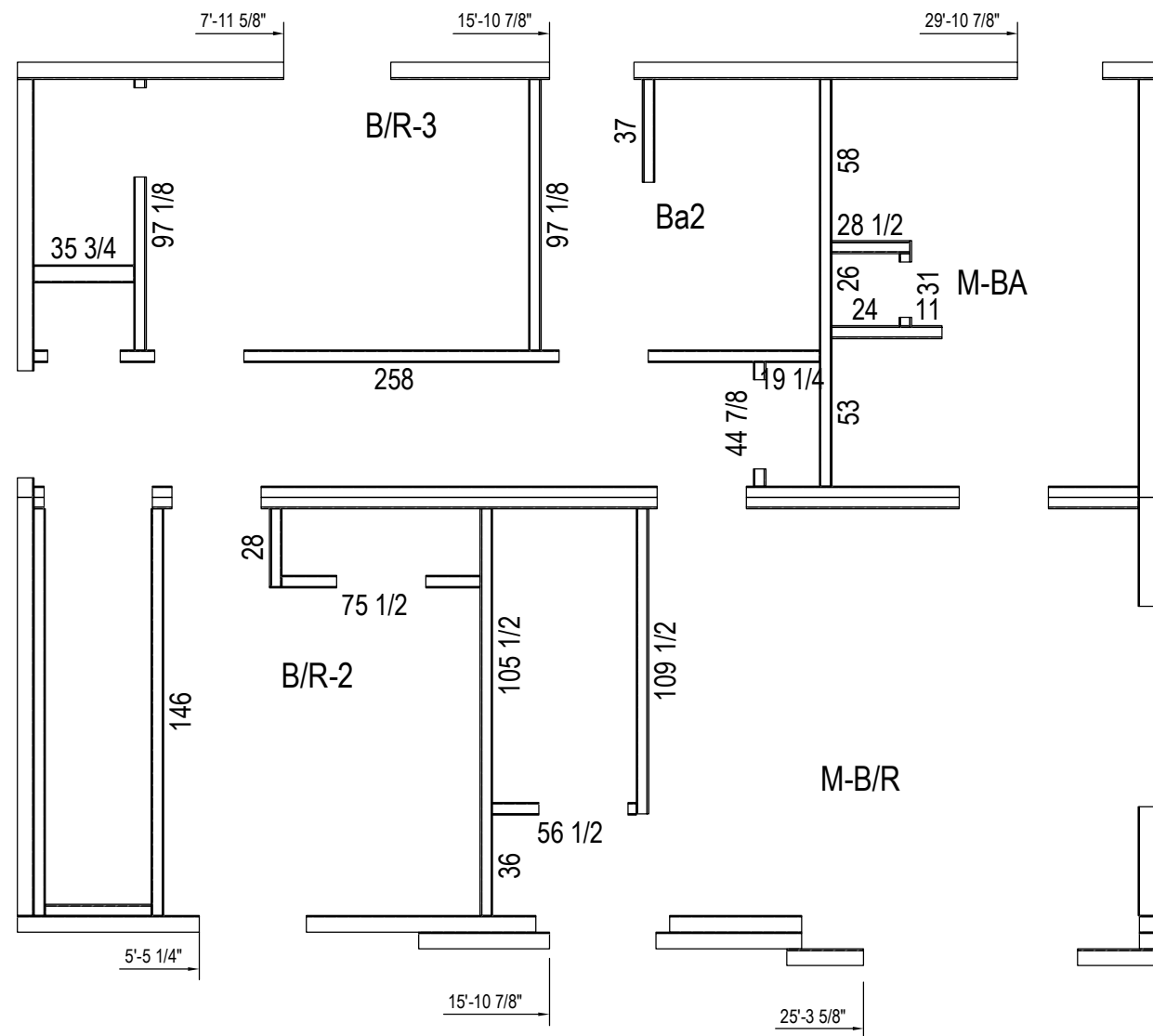
Dir: Schiavi Home Builders

S/N:

Model/Eng. No.: HZ106-A1

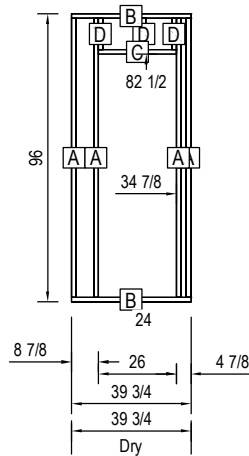
Pg.: ACCESS



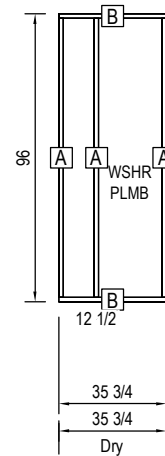


Revisions	
Date	Number

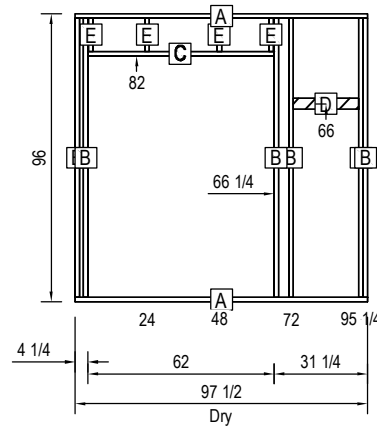
P1
Cut List
Sym Qty Mat'l Length
A 4 2x4 93
B 2 2x4 39 3/4
C 1 2x4 26
D 3 2x4 10 1/2



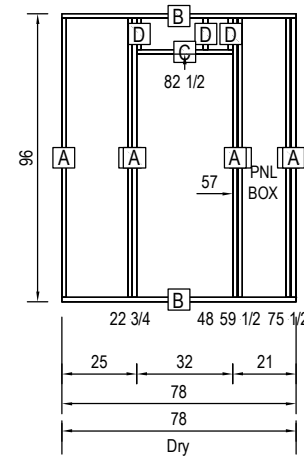
P2
Cut List
Sym Qty Mat'l Length
A 3 2x6 93
B 2 2x6 35 3/4



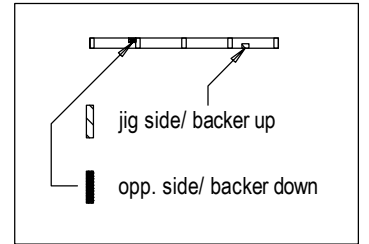
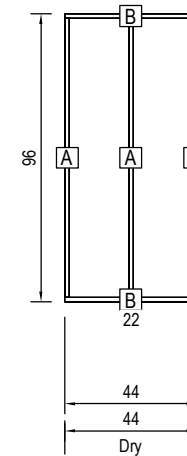
P3
Cut List
Sym Qty Mat'l Length
A 2 2x4 97 1/2
B 6 2x4 93
C 1 2x4 62
D 1 2x4 21 3/4
E 4 2x4 11



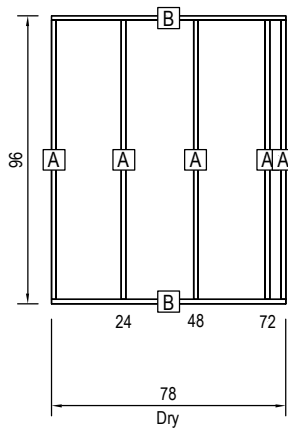
P4
Cut List
Sym Qty Mat'l Length
A 7 2x4 93
B 2 2x4 78
C 1 2x4 32
D 3 2x4 10 1/2



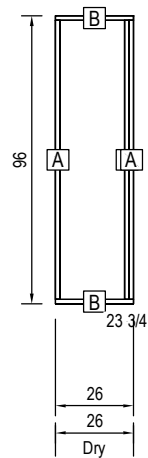
P5
Cut List
Sym Qty Mat'l Length
A 3 2x4 93
B 2 2x4 44



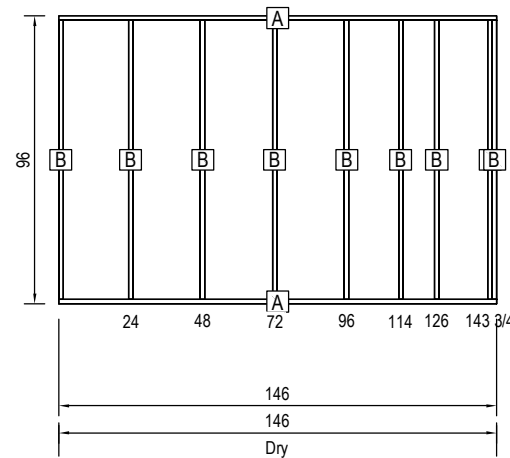
P6
Cut List
Sym Qty Mat'l Length
A 5 2x4 93
B 2 2x4 78



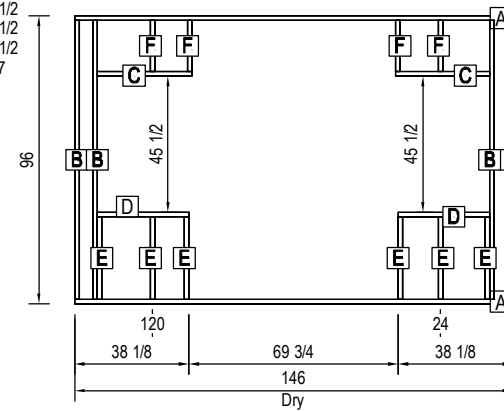
P7
Cut List
Sym Qty Mat'l Length
A 3 2x6 93
B 2 2x6 26



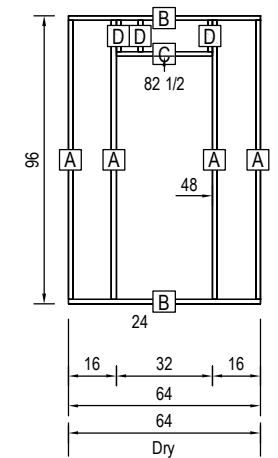
P8
Cut List
Sym Qty Mat'l Length
A 2 2x4 146
B 9 2x4 93



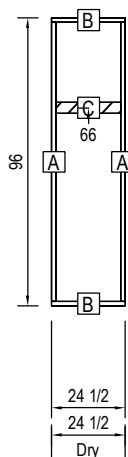
P9
Cut List
Sym Qty Mat'l Length
A 2 2x6 146
B 4 2x6 93
C 2 2x6 31 1/2
D 2 2x6 30 1/2
E 6 2x6 27 1/2
F 4 2x6 17



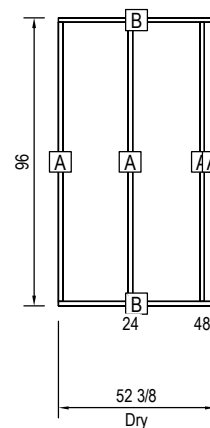
P10
Cut List
Sym Qty Mat'l Length
A 4 2x4 93
B 2 2x4 64
C 1 2x4 32
D 3 2x4 10 1/2



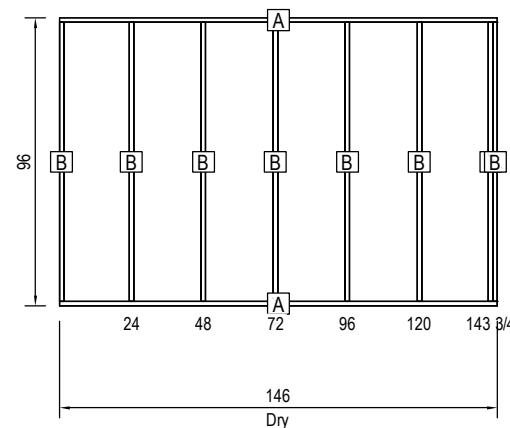
P11
Cut List
Sym Qty Mat'l Length
A 2 2x4 93
B 2 2x4 24 1/2
C 1 2x4 21 1/2



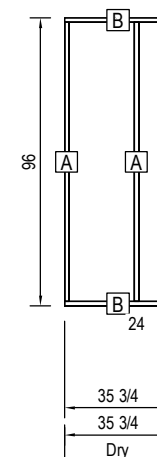
P12
Cut List
Sym Qty Mat'l Length
A 4 2x4 93
B 2 2x4 52 3/8



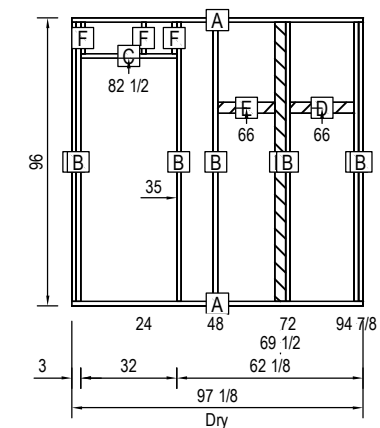
P13
Cut List
Sym Qty Mat'l Length
A 2 2x4 146
B 8 2x4 93



P50
Cut List
Sym Qty Mat'l Length
A 3 2x6 93
B 2 2x6 35 3/4



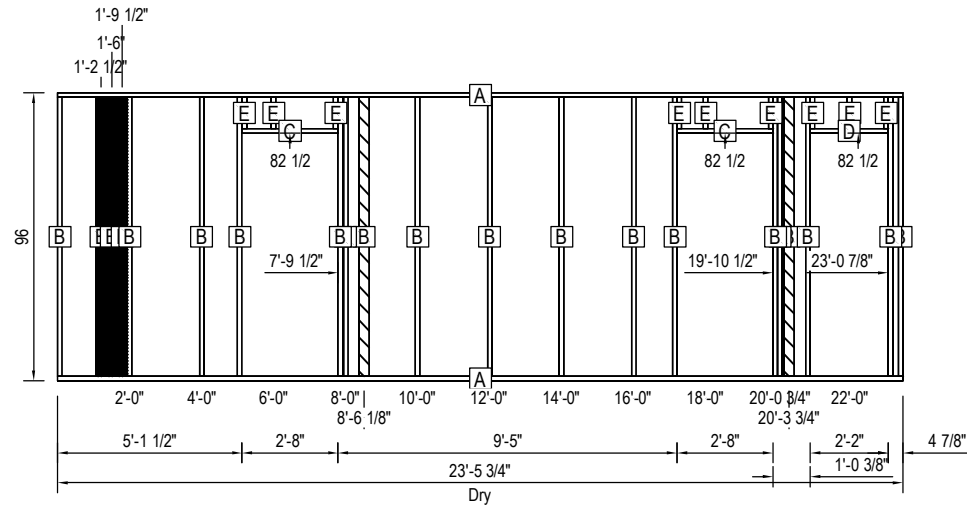
P51
Cut List
Sym Qty Mat'l Length
A 2 2x4 97 1/8
B 8 2x4 93
C 1 2x4 32
D 1 2x4 21 3/8
E 1 2x4 19
F 3 2x4 10 1/2



P52

Cut List

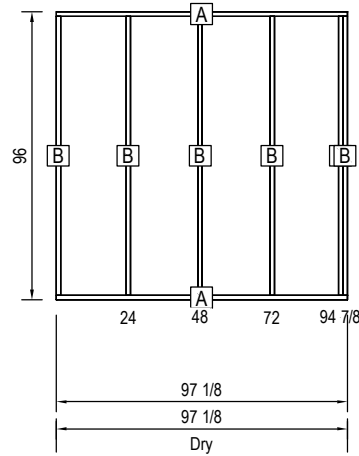
Sym	Qty	Mat'l	Length
A	2	2x4	281 3/4
B	21	2x4	93
C	2	2x4	32
D	1	2x4	26
E	9	2x4	10 1/2



P53

Cut List

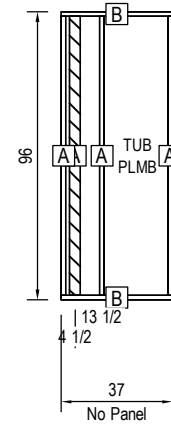
Sym	Qty	Mat'l	Length
A	2	2x4	97 1/8
B	6	2x4	93



P54

Cut List

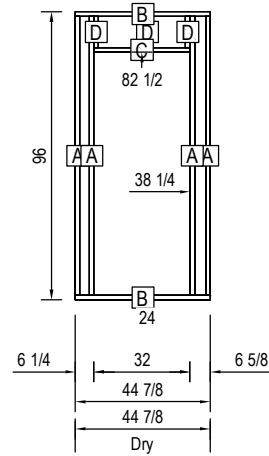
Sym	Qty	Mat'l	Length
A	4	2x4	93
B	2	2x4	37



P55

Cut List

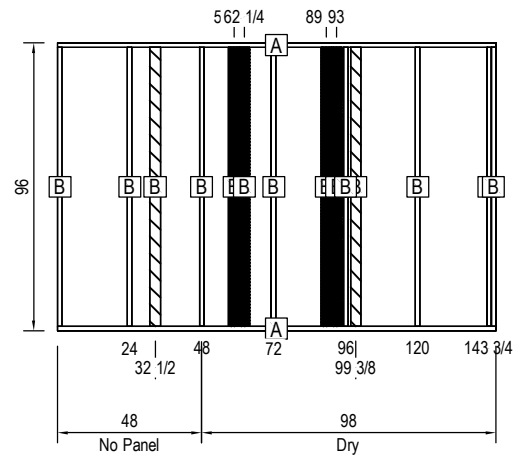
Sym	Qty	Mat'l	Length
A	4	2x4	93
B	2	2x4	44 7/8
C	1	2x4	32
D	3	2x4	10 1/2



P56

Cut List

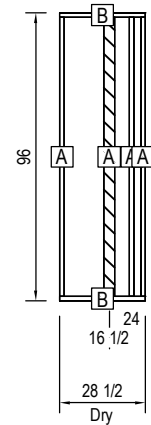
Sym	Qty	Mat'l	Length
A	2	2x4	146
B	14	2x4	93



P57

Cut List

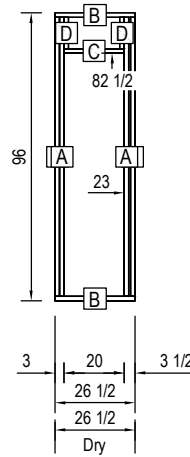
Sym	Qty	Mat'l	Length
A	4	2x4	93
B	2	2x4	28 1/2



P58

Cut List

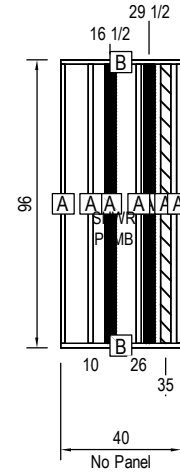
Sym	Qty	Mat'l	Length
A	4	2x4	93
B	2	2x4	26 1/2
C	1	2x4	20
D	2	2x4	10 1/2



P59

Cut List

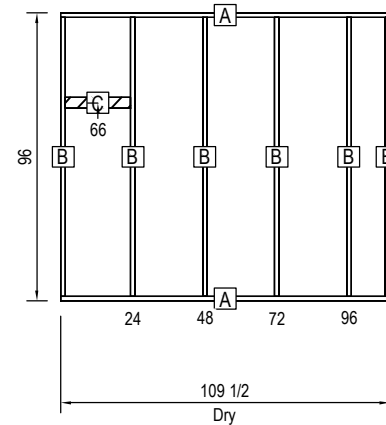
Sym	Qty	Mat'l	Length
A	7	2x4	93
B	2	2x4	40



P60

Cut List

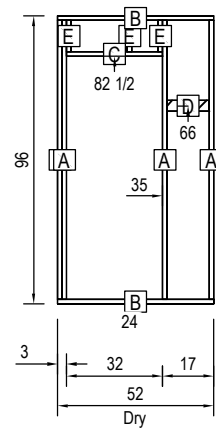
Sym	Qty	Mat'l	Length
A	2	2x4	109 1/2
B	6	2x4	93
C	1	2x4	21 3/4



P61

Cut List

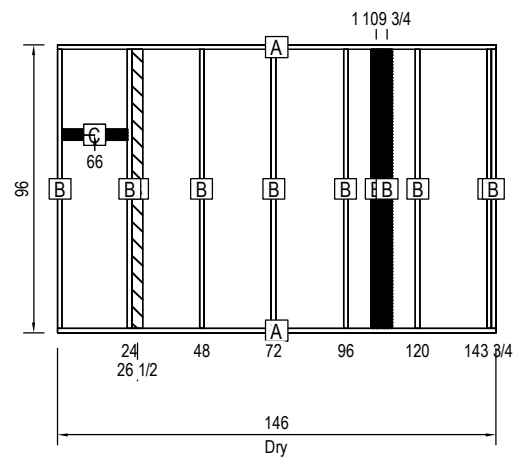
Sym	Qty	Mat'l	Length
A	4	2x4	93
B	2	2x4	52
C	1	2x4	32
D	1	2x4	14
E	3	2x4	10 1/2



P62

Cut List

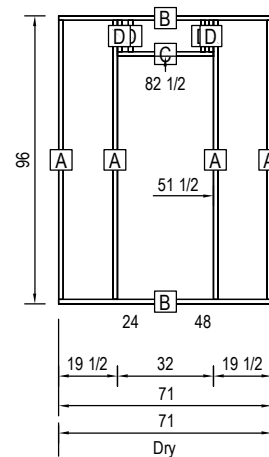
Sym	Qty	Mat'l	Length
A	2	2x4	146
B	11	2x4	93
C	2	2x4	21 3/4



P63

Cut List

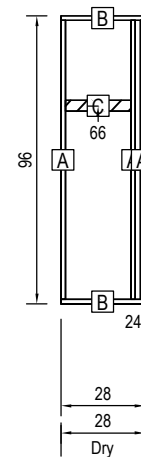
Sym	Qty	Mat'l	Length
A	4	2x4	93
B	2	2x4	71
C	1	2x4	32
D	4	2x4	10 1/2



P64

Cut List

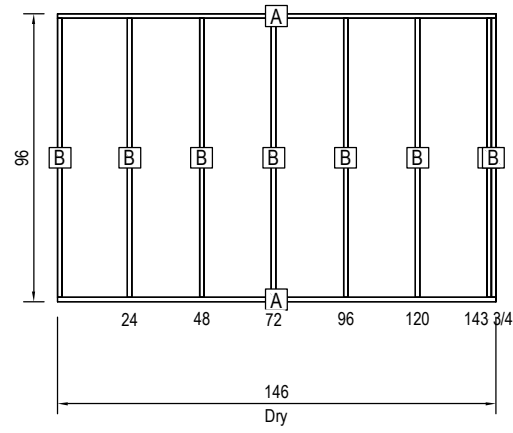
Sym	Qty	Mat'l	Length
A	3	2x4	93
B	2	2x4	28
C	1	2x4	21 3/4



P65

Cut List

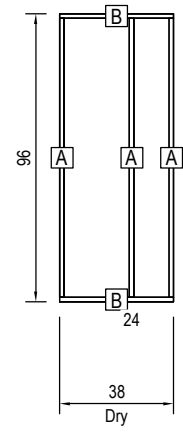
Sym	Qty	Mat'l	Length
A	2	2x4	146
B	8	2x4	93



P66

Cut List

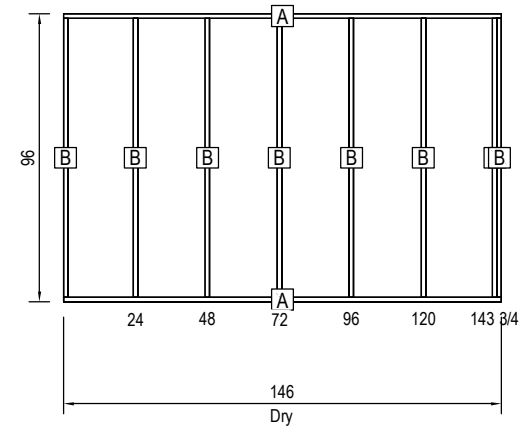
Sym	Qty	Mat'l	Length
A	3	2x4	93
B	2	2x4	38



P67

Cut List

Sym	Qty	Mat'l	Length
A	2	2x4	146
B	8	2x4	93

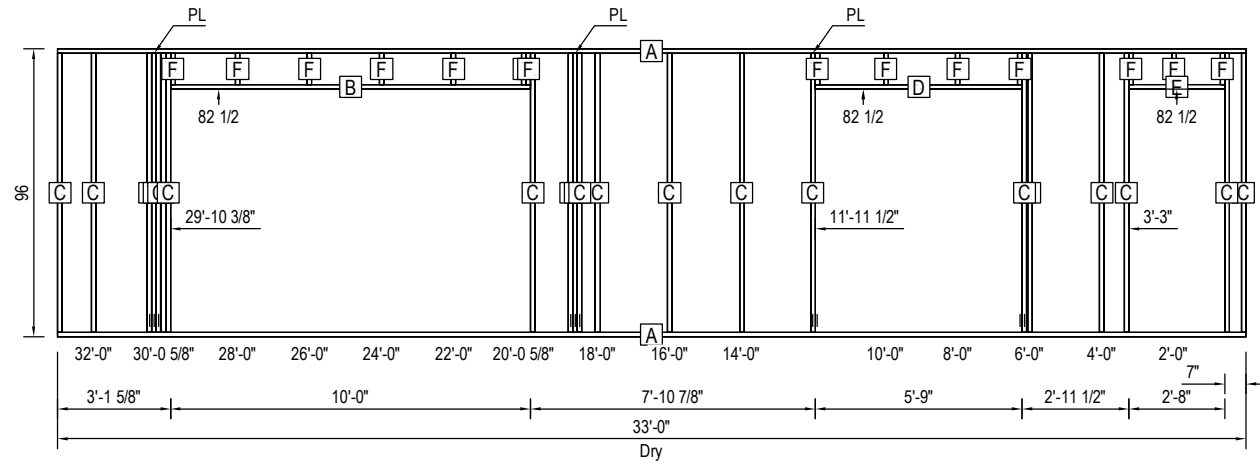


Revisions	
Date	Number

M1

Cut List

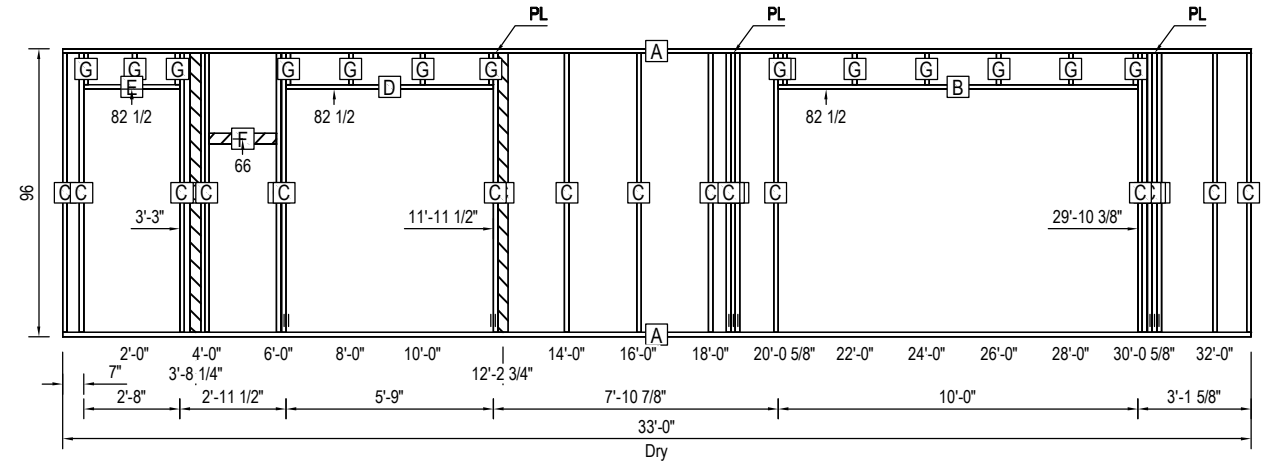
Sym	Qty	Mat'l	Length
A	2	2x4	396
B	1	2x4	120
C	21	2x4	93
D	1	2x4	69
E	1	2x4	32
F	14	2x4	10 1/2



M2

Cut List

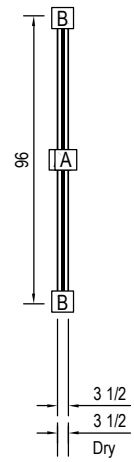
Sym	Qty	Mat'l	Length
A	2	2x4	396
B	1	2x4	120
C	23	2x4	93
D	1	2x4	69
E	1	2x4	32
F	1	2x4	22 1/2
G	14	2x4	10 1/2



M3

Cut List

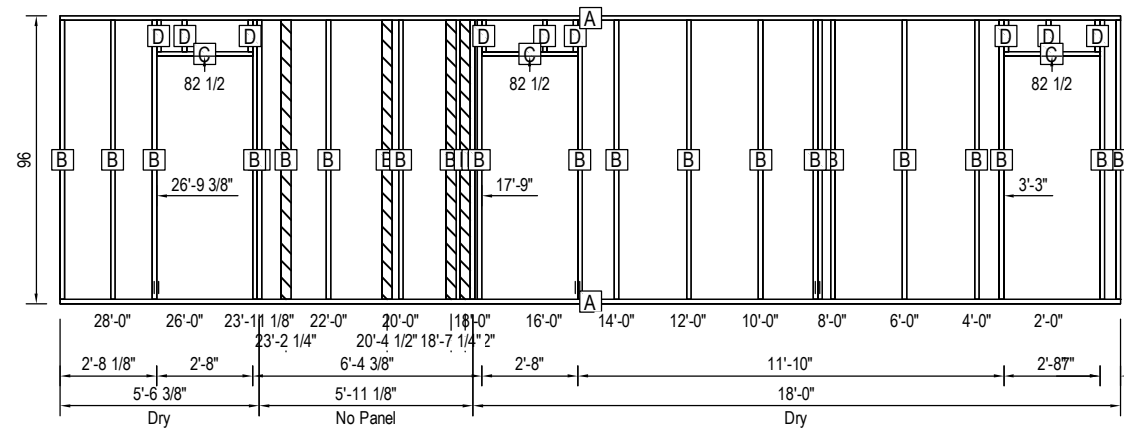
Sym	Qty	Mat'l	Length
A	2	2x4	93
B	2	2x4	3 1/2



M4

Cut List

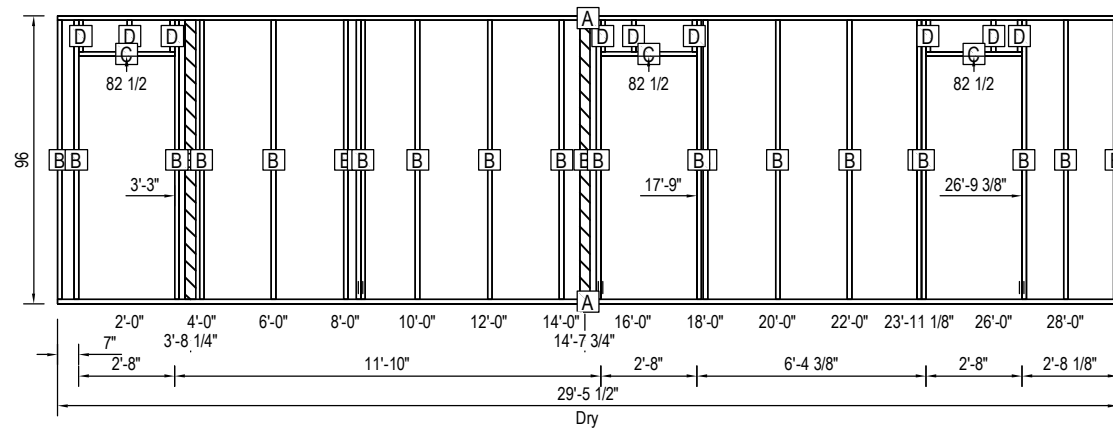
Sym	Qty	Mat'l	Length
A	2	2x4	353 1/2
B	25	2x4	93
C	3	2x4	32
D	9	2x4	10 1/2



M5

Cut List

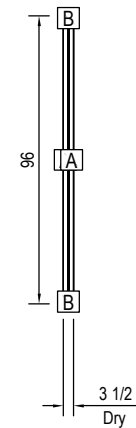
Sym	Qty	Mat'l	Length
A	2	2x4	353 1/2
B	23	2x4	93
C	3	2x4	32
D	9	2x4	10 1/2



M6

Cut List

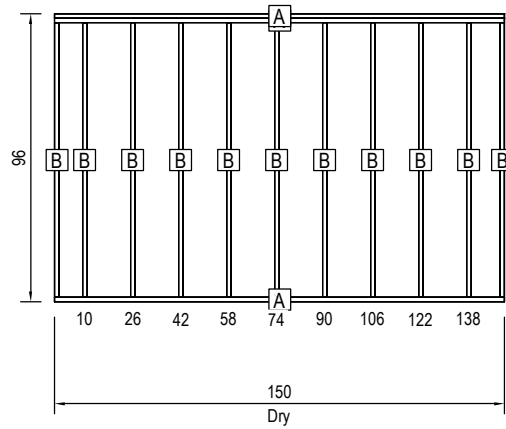
Sym	Qty	Mat'l	Length
A	2	2x4	93
B	2	2x4	3 1/2



E1

Cut List

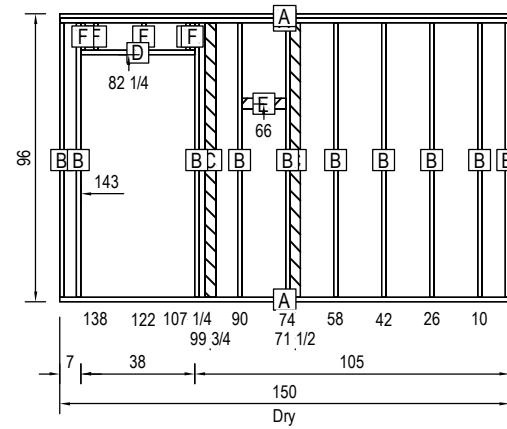
Sym	Qty	Mat'l	Length
A	3	2x6	150
B	11	2x6	91 1/2



E2

Cut List

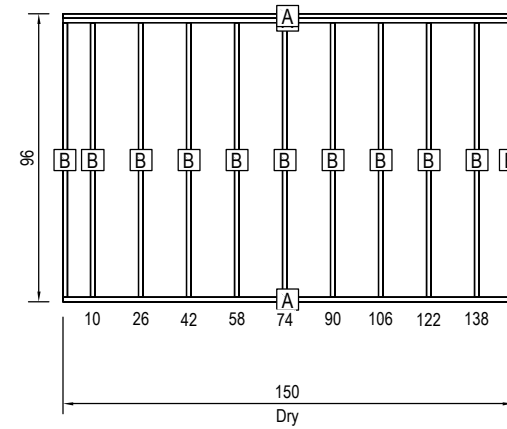
Sym	Qty	Mat'l	Length
A	3	2x6	150
B	10	2x6	91 1/2
C	2	2x4	91 1/2
D	1	2x6	38
E	1	2x4	14 1/2
F	5	2x6	9 1/4



E3

Cut List

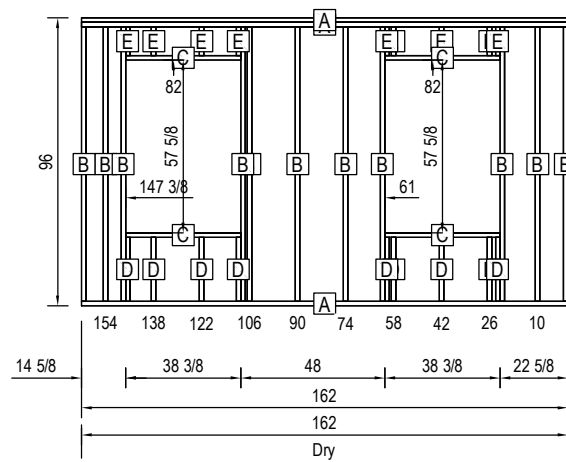
Sym	Qty	Mat'l	Length
A	3	2x6	150
B	11	2x6	91 1/2



E4

Cut List

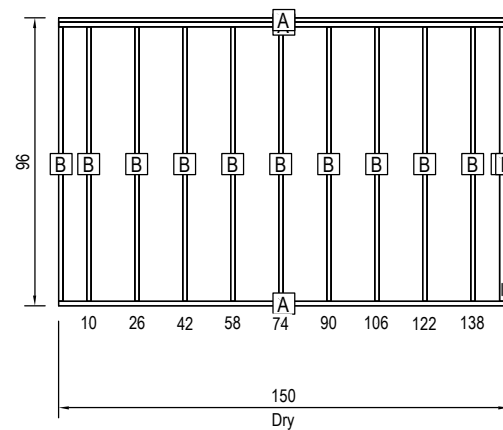
Sym	Qty	Mat'l	Length
A	3	2x6	162
B	11	2x6	91 1/2
C	4	2x6	38 3/8
D	9	2x6	21 3/8
E	9	2x6	9 1/2



E5

Cut List

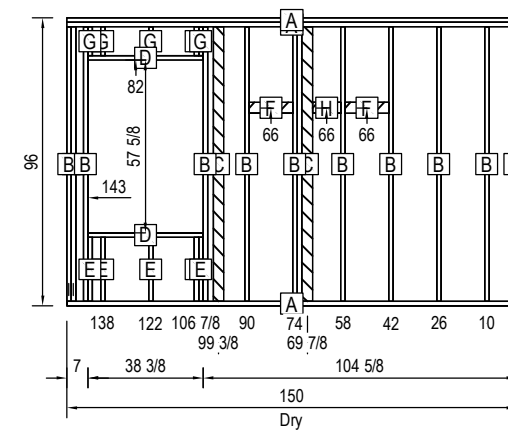
Sym	Qty	Mat'l	Length
A	3	2x6	150
B	12	2x6	91 1/2



E6

Cut List

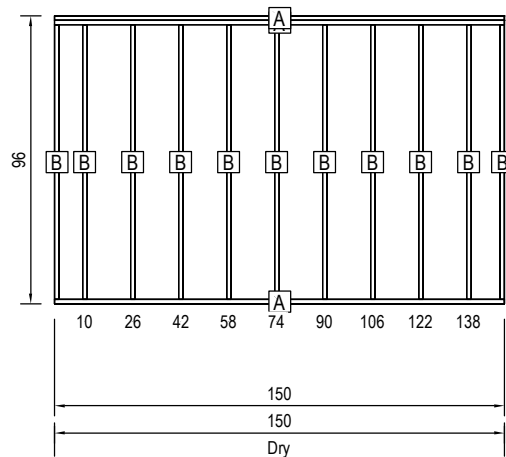
Sym	Qty	Mat'l	Length
A	3	2x6	150
B	11	2x6	91 1/2
C	2	2x4	91 1/2
D	2	2x6	38 3/8
E	5	2x6	21 3/8
F	2	2x4	14 1/2
G	5	2x6	9 1/2
H	1	2x4	9 3/8



E7

Cut List

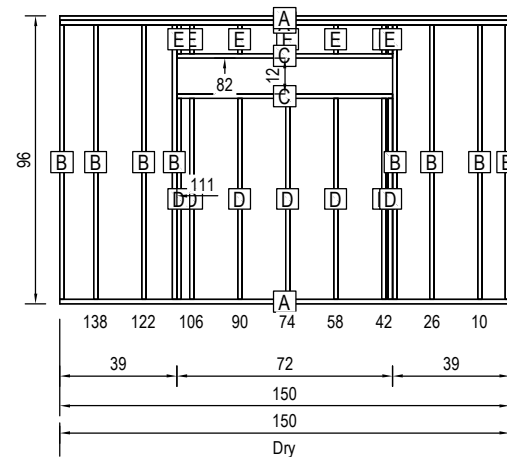
Sym	Qty	Mat'l	Length
A	3	2x6	150
B	11	2x6	91 1/2



E8

Cut List

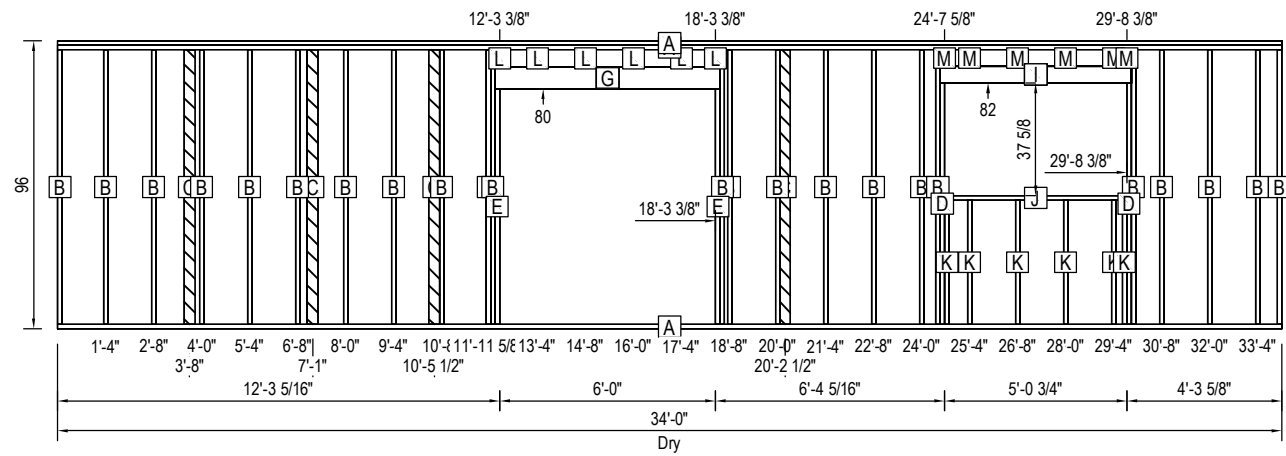
Sym	Qty	Mat'l	Length
A	3	2x6	150
B	8	2x6	91 1/2
C	2	2x6	72
D	7	2x6	67
E	7	2x6	9 1/2



S1

Cut List

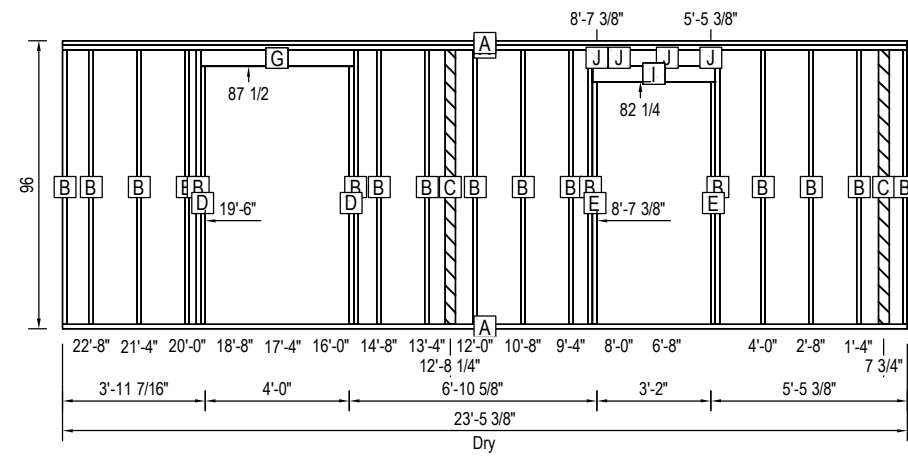
Sym	Qty	Mat'l	Length
A	3	2x6	408
B	23	2x6	91 1/2
C	4	2x4	91 1/2
D	2	2x6	80 1/2
E	2	2x6	78 1/2
F	2	1/2 Ply	75
G	3	2x8	75
H	2	1/2 Ply	63 3/4
I	3	2x6	63 3/4
J	1	2x6	60 3/4
K	6	2x6	41 3/8
L	6	2x6	5 3/4
M	6	2x6	5 1/2



S2

Cut List

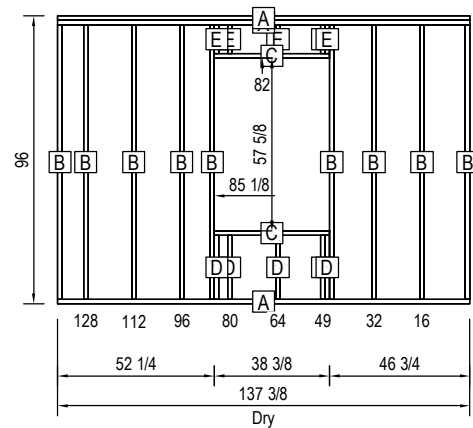
Sym	Qty	Mat'l	Length
A	3	2x6	281 1/2
B	17	2x6	91 1/2
C	2	2x4	91 1/2
D	2	2x6	86
E	2	2x6	80 3/4
F	2	1/2 Ply	51
G	3	2x6	51
H	2	1/2 Ply	41
I	3	2x6	41
J	4	2x6	5 1/4



S3

Cut List

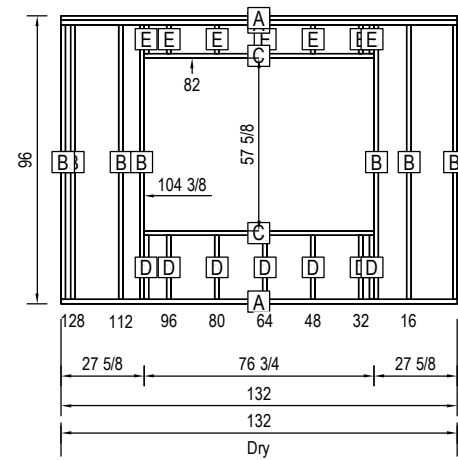
Sym	Qty	Mat'l	Length
A	3	2x6	137 1/2
B	9	2x6	91 1/2
C	2	2x6	38 3/8
D	5	2x6	21 3/8
E	5	2x6	9 1/2



S4

Cut List

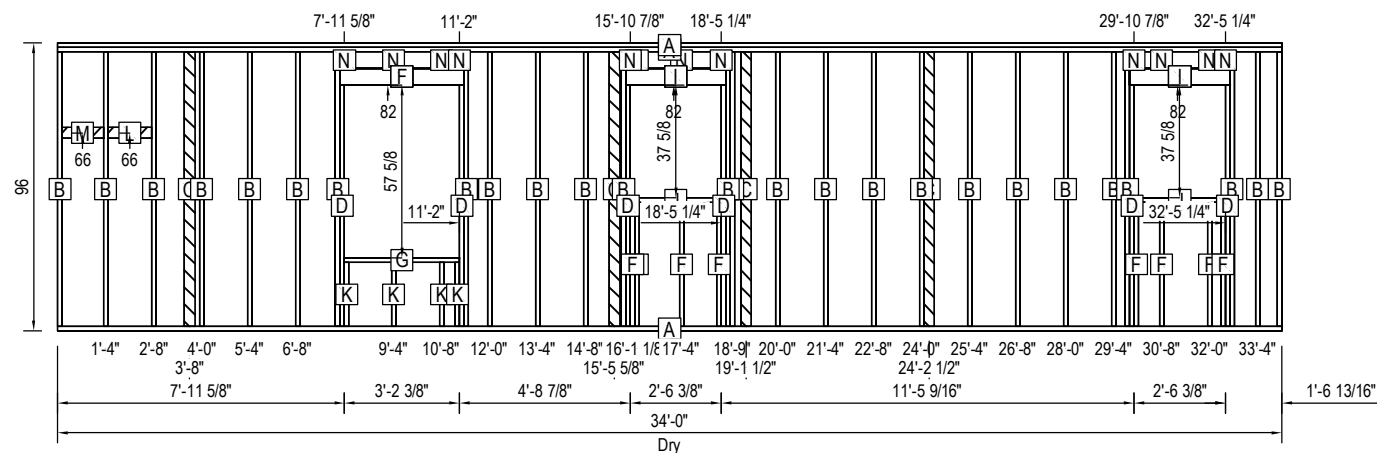
Sym	Qty	Mat'l	Length
A	3	2x6	132
B	7	2x6	91 1/2
C	2	2x6	76 3/4
D	7	2x6	21 3/8
E	7	2x6	9 1/2



S5

Cut List

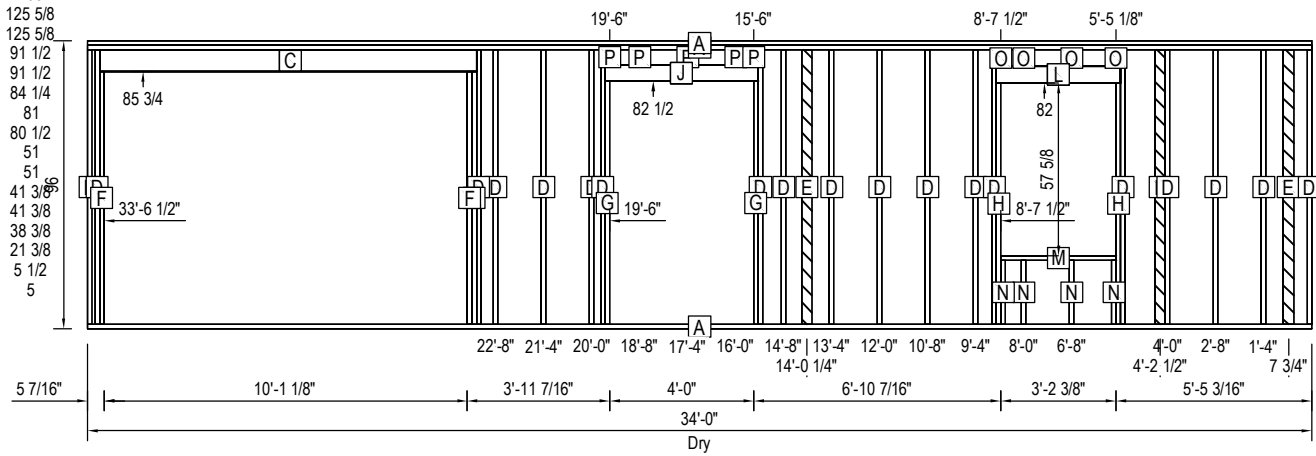
Sym	Qty	Mat'l	Length
A	3	2x6	408
B	26	2x6	91 1/2
C	4	2x4	91 1/2
D	6	2x6	80 1/2
E	2	1/2 Ply	41 3/8
F	11	2x6	41 3/8
G	1	2x6	38 3/8
H	4	1/2 Ply	33 3/8
I	6	2x6	33 3/8
J	2	2x6	30 3/8
K	4	2x6	21 3/8
L	1	2x4	14 1/2
M	1	2x4	13 3/4
N	12	2x6	5 1/2



S6

Cut List

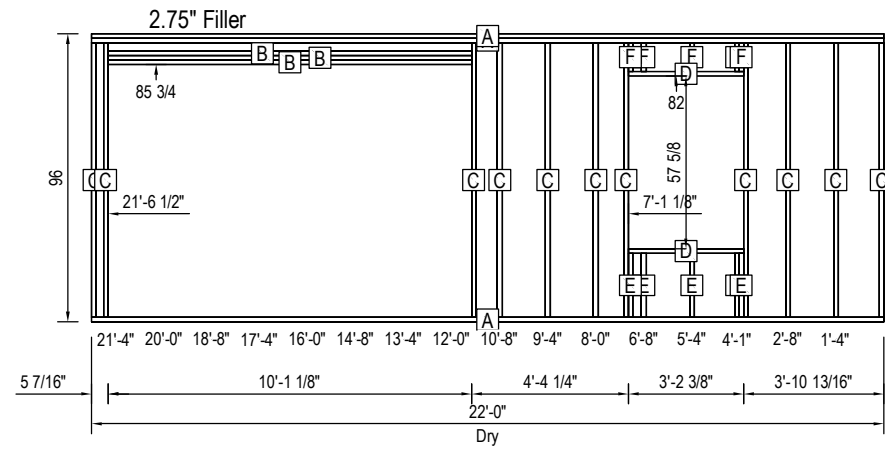
Sym	Qty	Mat'l	Length
A	3	2x6	408
B	2	1/2 Ply	125 5/8
C	3	1.50x7.25 LVL	125 5/8
D	19	2x6	91 1/2
E	3	2x4	91 1/2
F	3	2x6	84 1/4
G	2	2x6	81
H	2	2x6	80 1/2
I	2	1/2 Ply	51
J	3	2x6	51
K	2	1/2 Ply	41 3/8
L	3	2x6	41 3/8
M	1	2x6	38 3/8
N	4	2x6	21 3/8
O	4	2x6	5 1/2
P	5	2x6	5



S7

Cut List

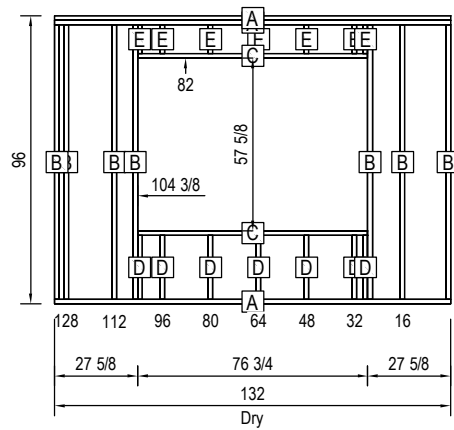
Sym	Qty	Mat'l	Length
A	3	2x6	264
B	3	2x6	121 1/8
C	11	2x6	91 1/2
D	2	2x6	38 3/8
E	5	2x6	21 3/8
F	5	2x6	9 1/2

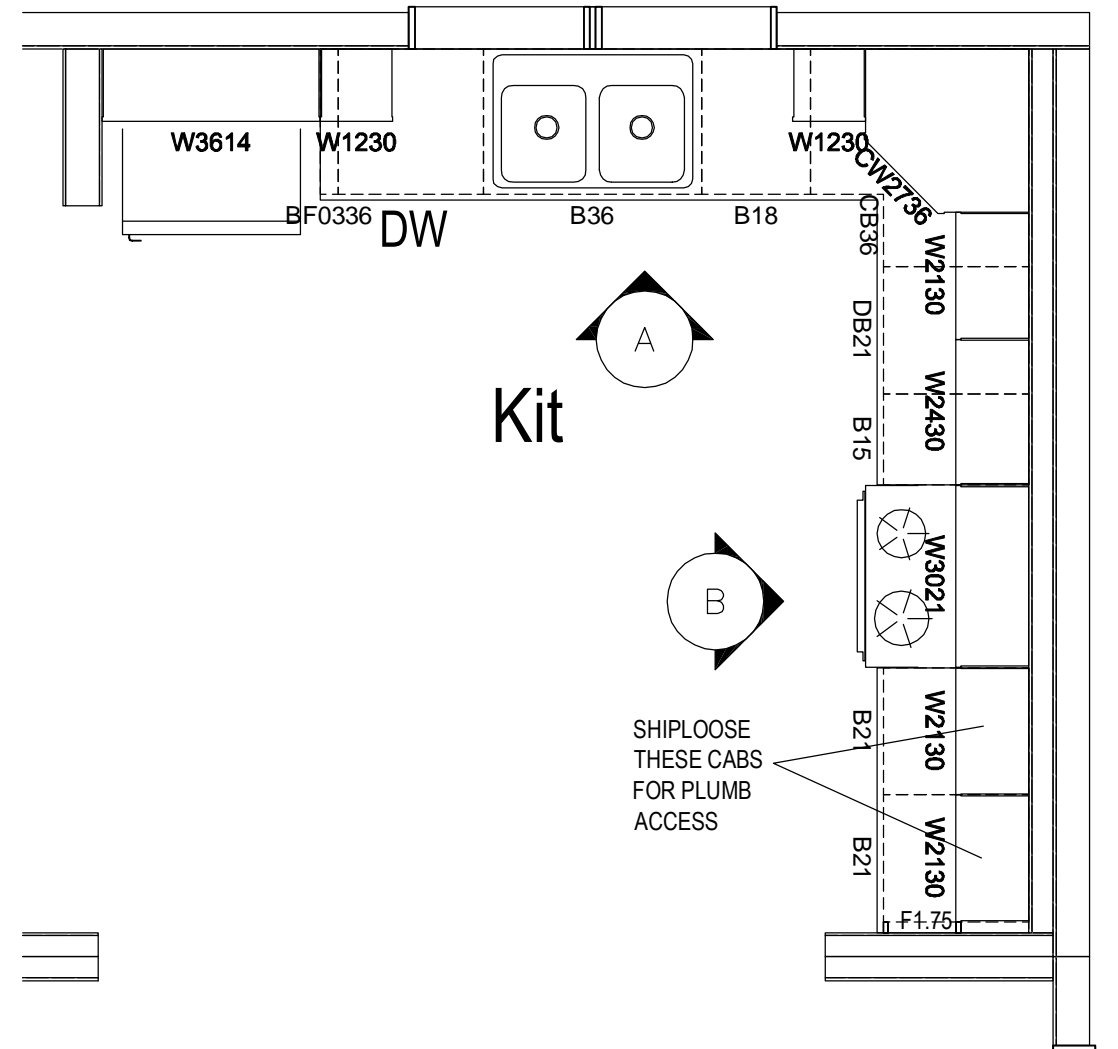
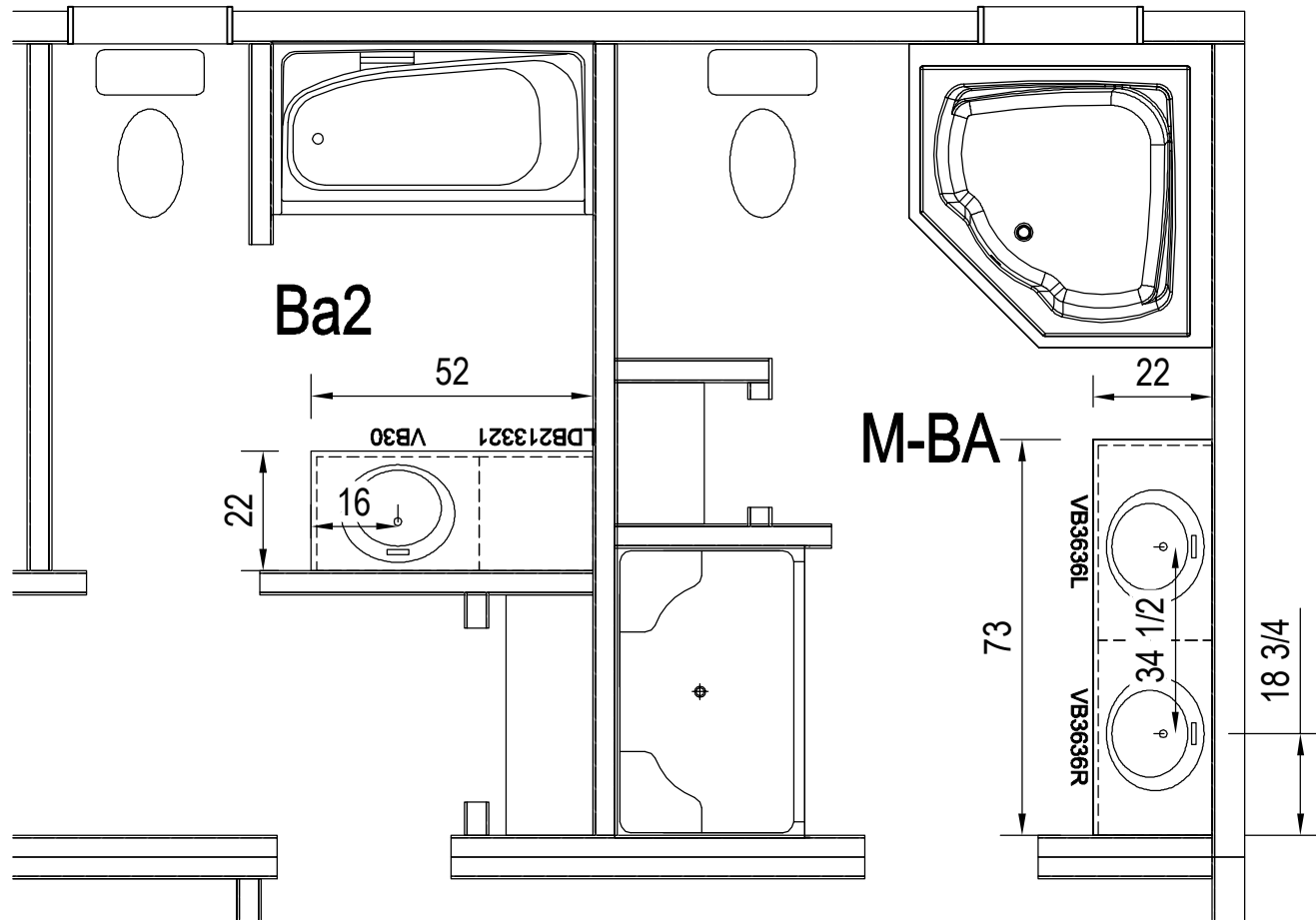
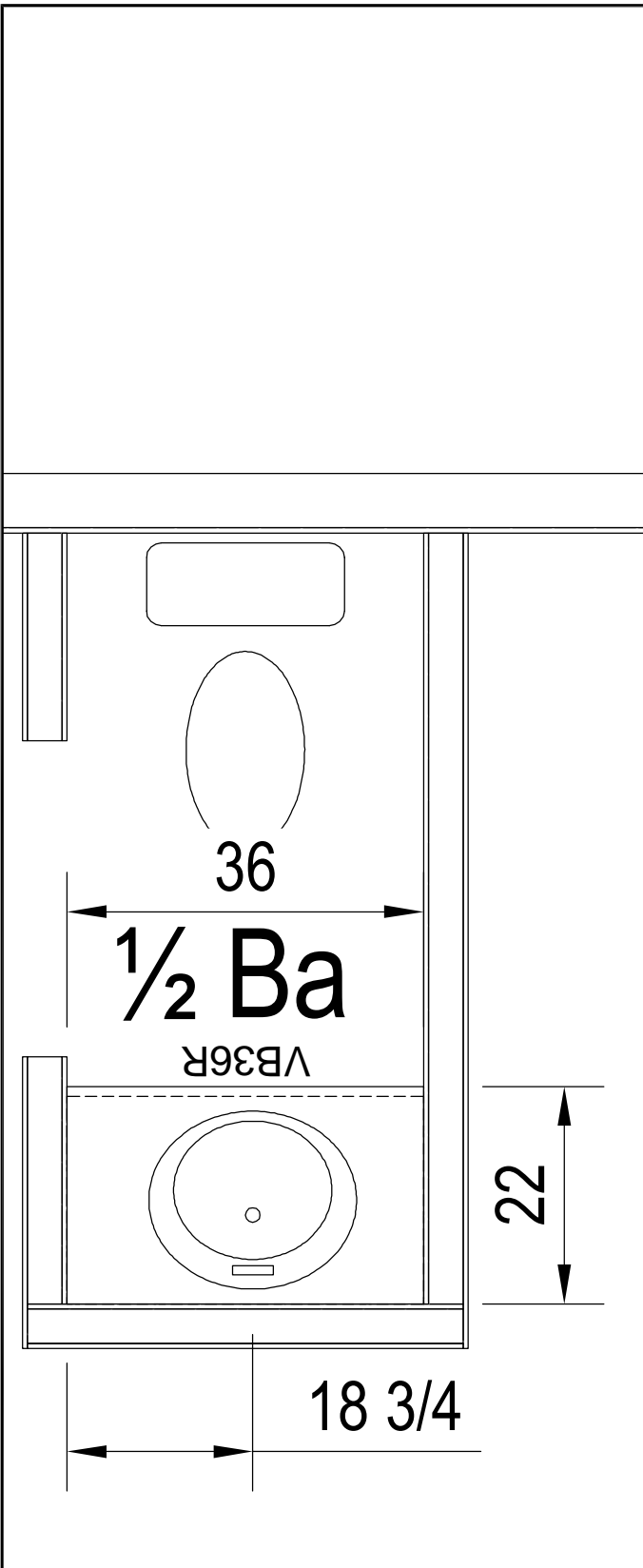


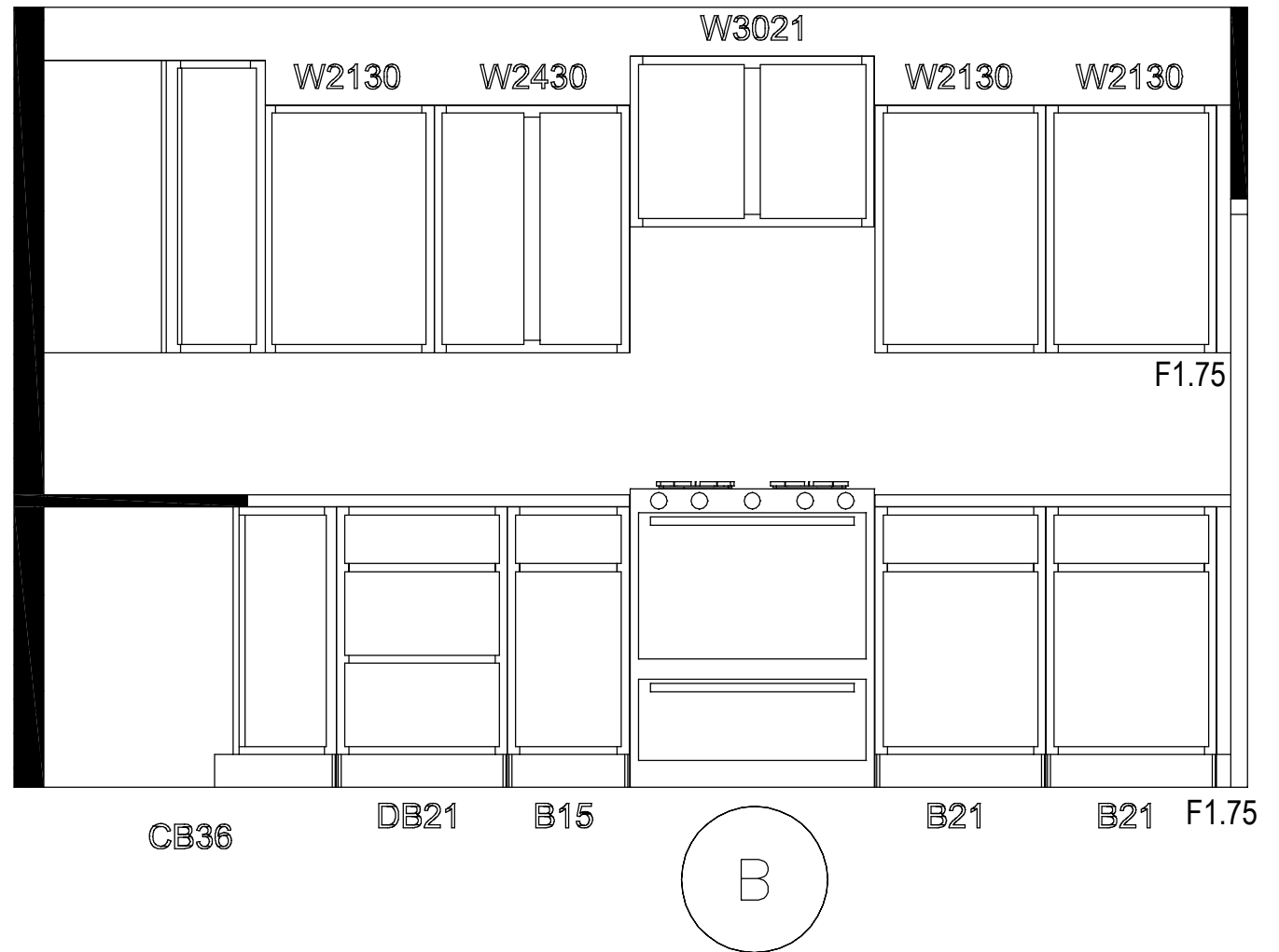
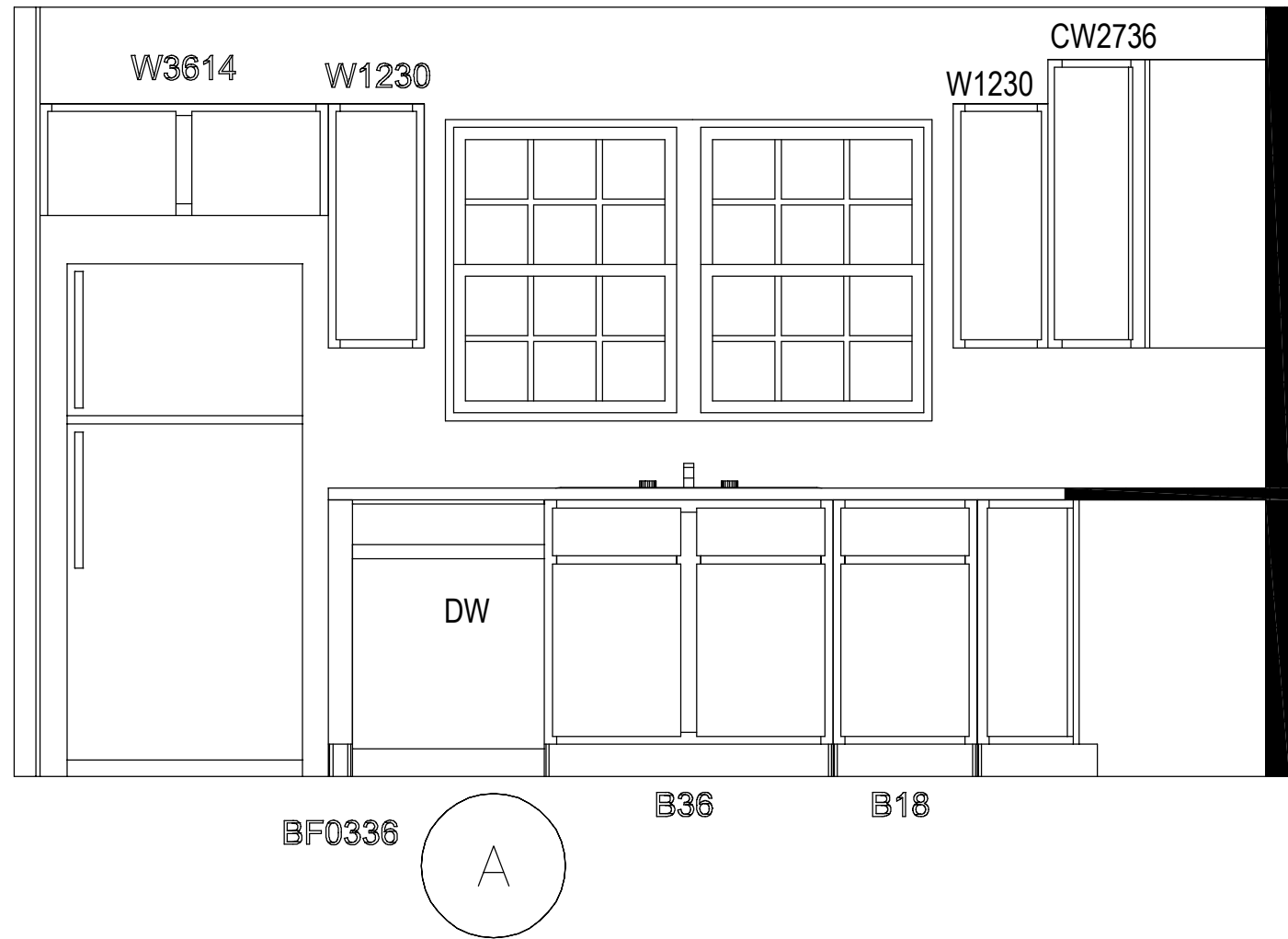
S8

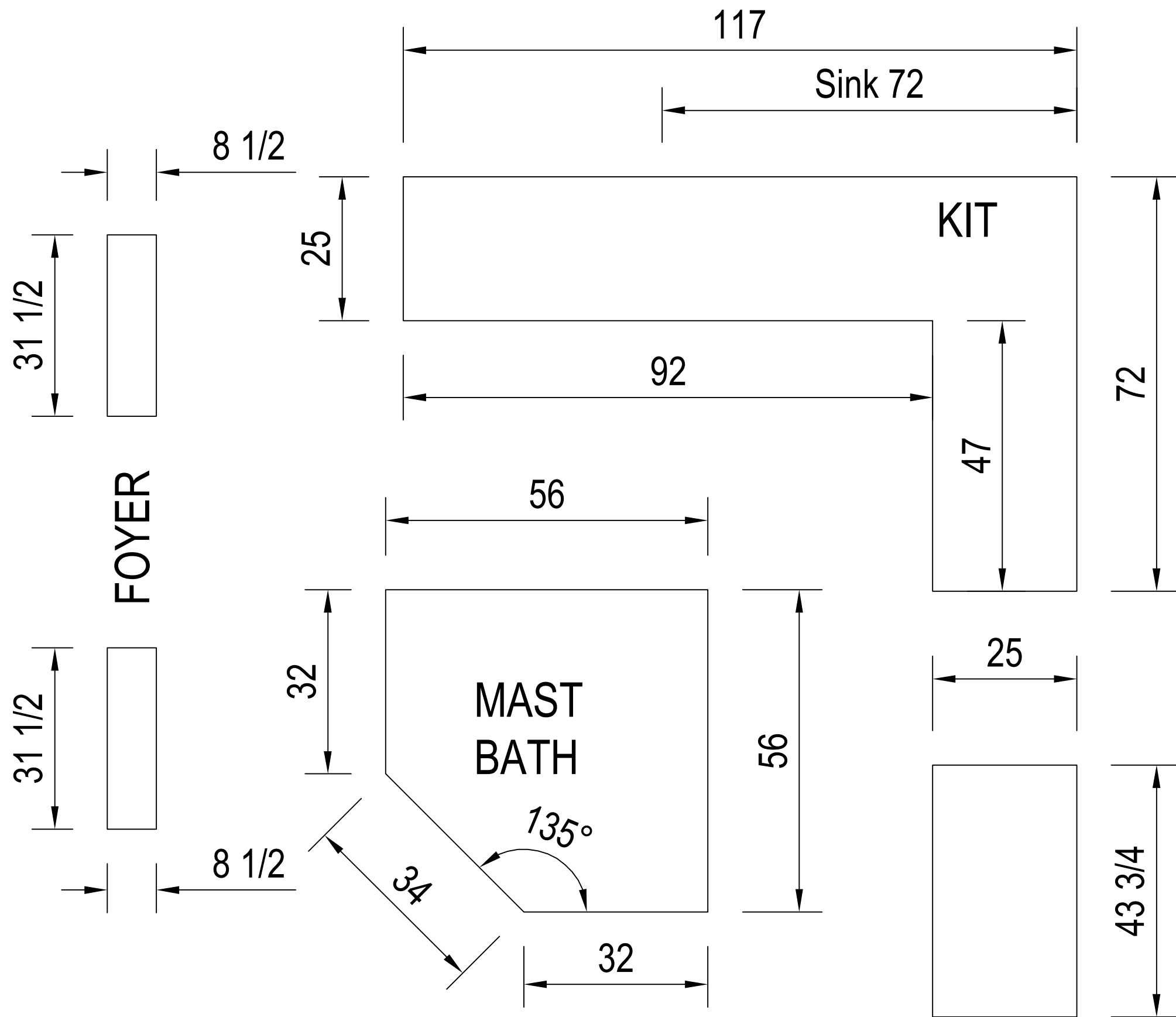
Cut List

Sym	Qty	Mat'l	Length
A	3	2x6	132
B	7	2x6	91 1/2
C	2	2x6	76 3/4
D	7	2x6	21 3/8
E	7	2x6	9 1/2







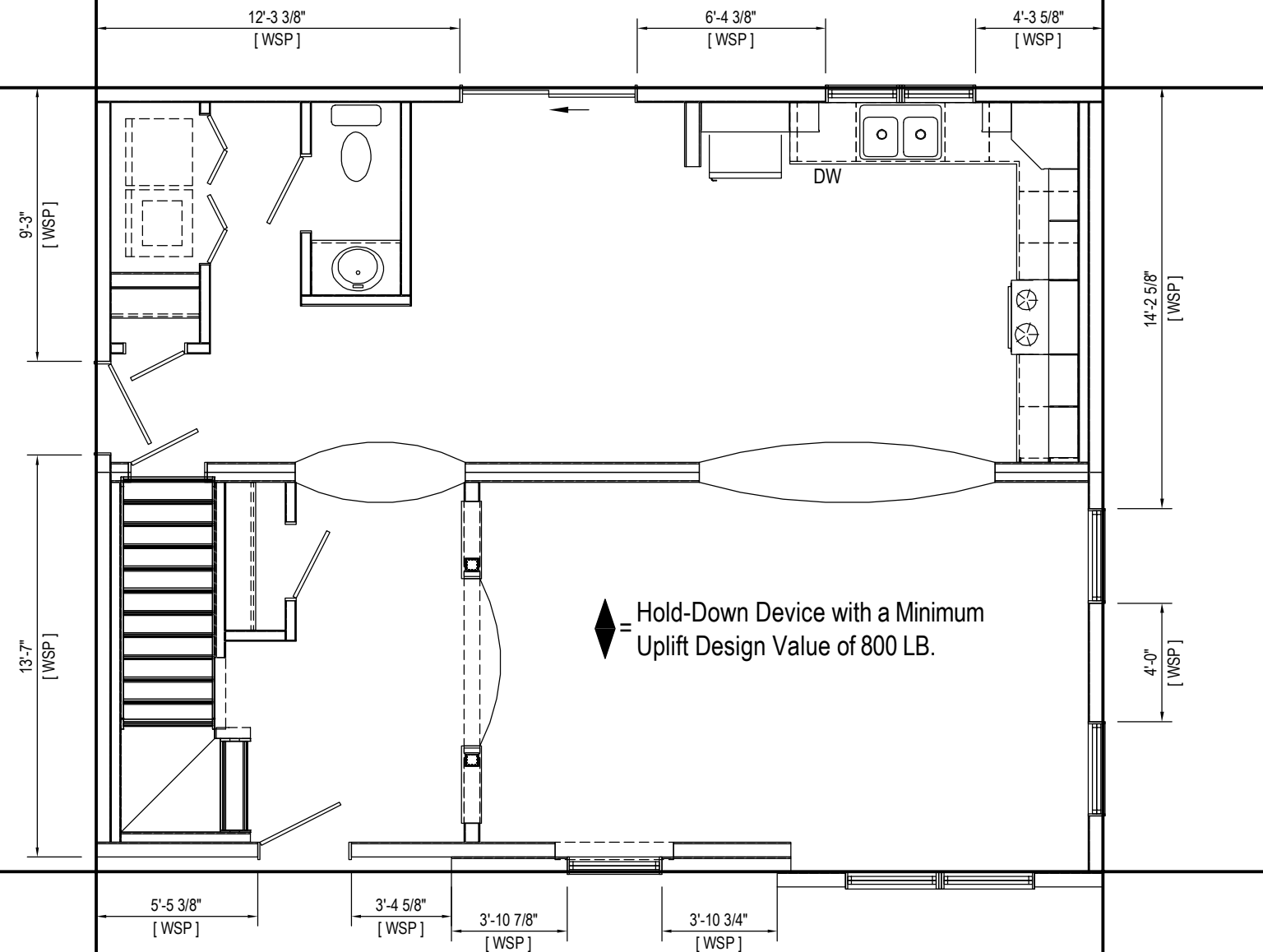


VERTICAL BWL1	
REQUIRED	12.91
PROVIDED	22.83
MEETS REQ	OK
BLOCKING REQ	YES

VERTICAL BWL2	
REQUIRED	12.91
PROVIDED	18.22
MEETS REQ	OK
BLOCKING REQ	YES

HORIZONTAL BWL 1	
REQUIRED	10.09
PROVIDED	21.97
MEETS REQ	OK
BLOCKING REQ	NO

HORIZONTAL BWL 2	
REQUIRED	10.09
PROVIDED	13.70
MEETS REQ	OK
BLOCKING REQ	YES



◆ = Hold-Down Device with a Minimum Uplift Design Value of 800 LB.

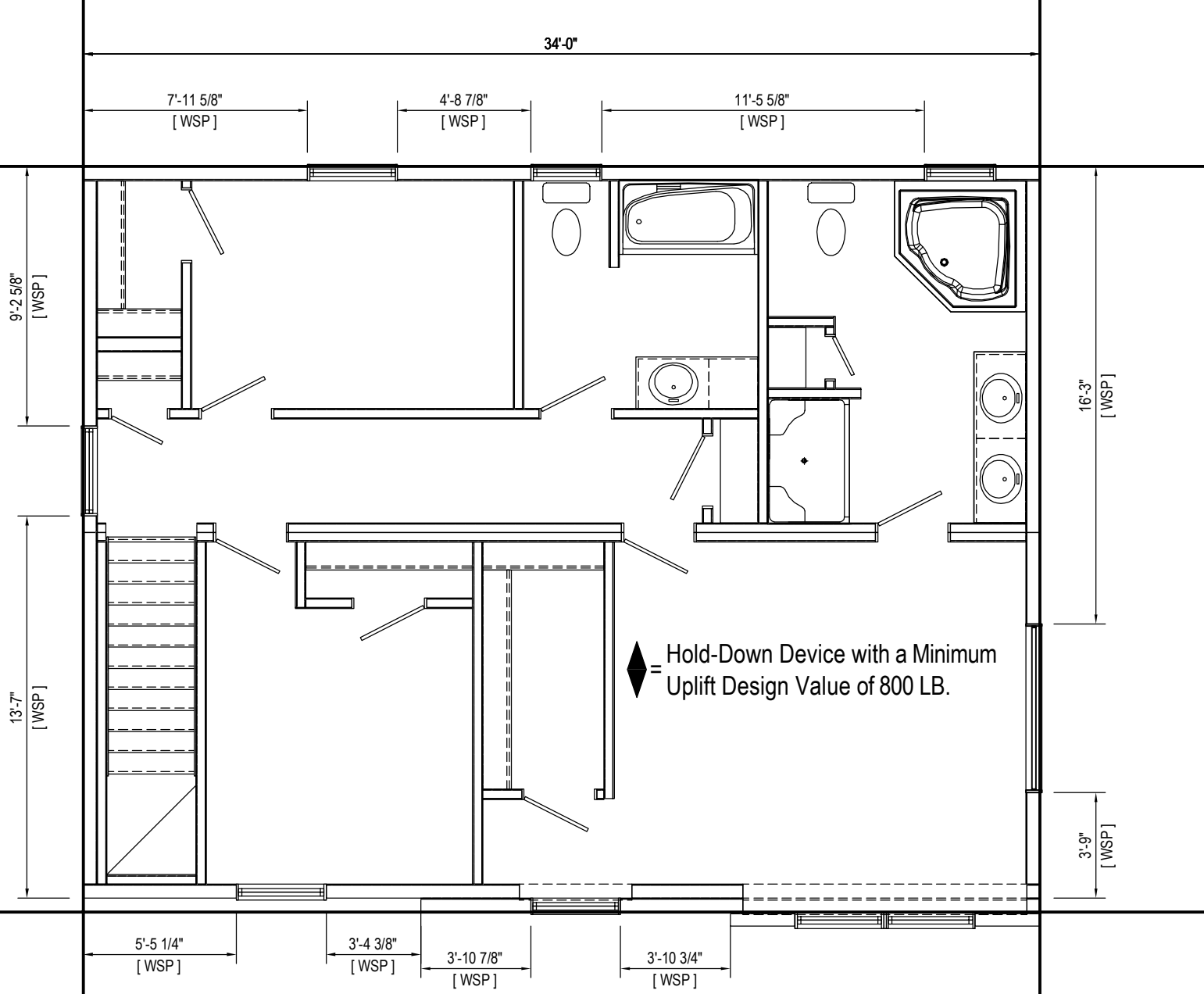
Braced Wall									
Unit	Method	Wind Load	Width	Length	Exposure	Roof Pitch	Sidewall Height	Seismic	Max. Mean Roof Height
MAIN	IRC_2009	90 mph	26'-0"	34'-0"	C	7/12	8'-0"	C	IRC

VERTICAL BWL1	
REQUIRED	6.30
PROVIDED	22.80
MEETS REQ	OK
BLOCKING REQ	NO

VERTICAL BWL2	
REQUIRED	6.30
PROVIDED	19.25
MEETS REQ	OK
BLOCKING REQ	NO

HORIZONTAL BWL 1	
REQUIRED	4.90
PROVIDED	24.17
MEETS REQ	OK
BLOCKING REQ	NO

HORIZONTAL BWL 2	
REQUIRED	4.90
PROVIDED	13.68
MEETS REQ	OK
BLOCKING REQ	NO



Braced Wall									
Unit	Method	Wind Load	Width	Length	Exposure	Roof Pitch	Sidewall Height	Seismic	Max. Mean Roof Height
MAIN	IRC_2009	90 mph	26'-0"	34'-0"	C	7/12	8'-0"	C	IRC