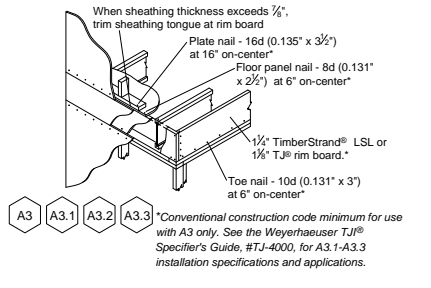


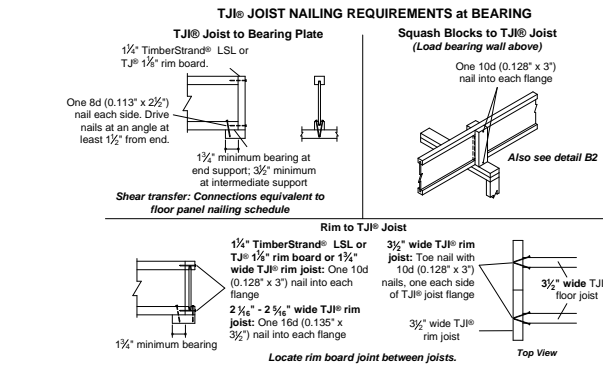
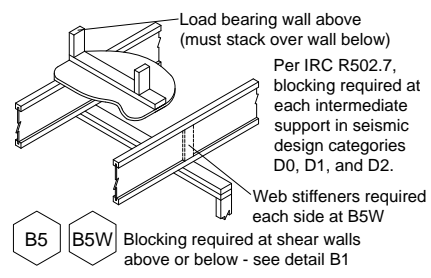


Structural Framers' Pocket Guide
 Access with your Smartphone
<http://www.level.com/literature/lj-9001.pdf>

 Weyerhaeuser



Joist Size	Span	Sheathing Thickness
16"	16'	1/2"
16"	18'	5/8"
16"	20'	3/4"
16"	22'	7/8"
16"	24'	1"
16"	26'	1 1/8"
16"	28'	1 1/4"
16"	30'	1 1/2"
16"	32'	1 3/4"
16"	34'	1 7/8"
16"	36'	2"
16"	38'	2 1/8"
16"	40'	2 1/4"
16"	42'	2 3/8"
16"	44'	2 1/2"
16"	46'	2 5/8"
16"	48'	2 3/4"
16"	50'	2 7/8"
16"	52'	3"
16"	54'	3 1/8"
16"	56'	3 1/4"
16"	58'	3 3/8"
16"	60'	3 1/2"
16"	62'	3 5/8"
16"	64'	3 3/4"
16"	66'	3 7/8"
16"	68'	4"
16"	70'	4 1/8"
16"	72'	4 1/4"
16"	74'	4 3/8"
16"	76'	4 1/2"
16"	78'	4 5/8"
16"	80'	4 3/4"
16"	82'	4 7/8"
16"	84'	5"
16"	86'	5 1/8"
16"	88'	5 1/4"
16"	90'	5 3/8"
16"	92'	5 1/2"
16"	94'	5 5/8"
16"	96'	5 3/4"
16"	98'	5 7/8"
16"	100'	6"



WARNING

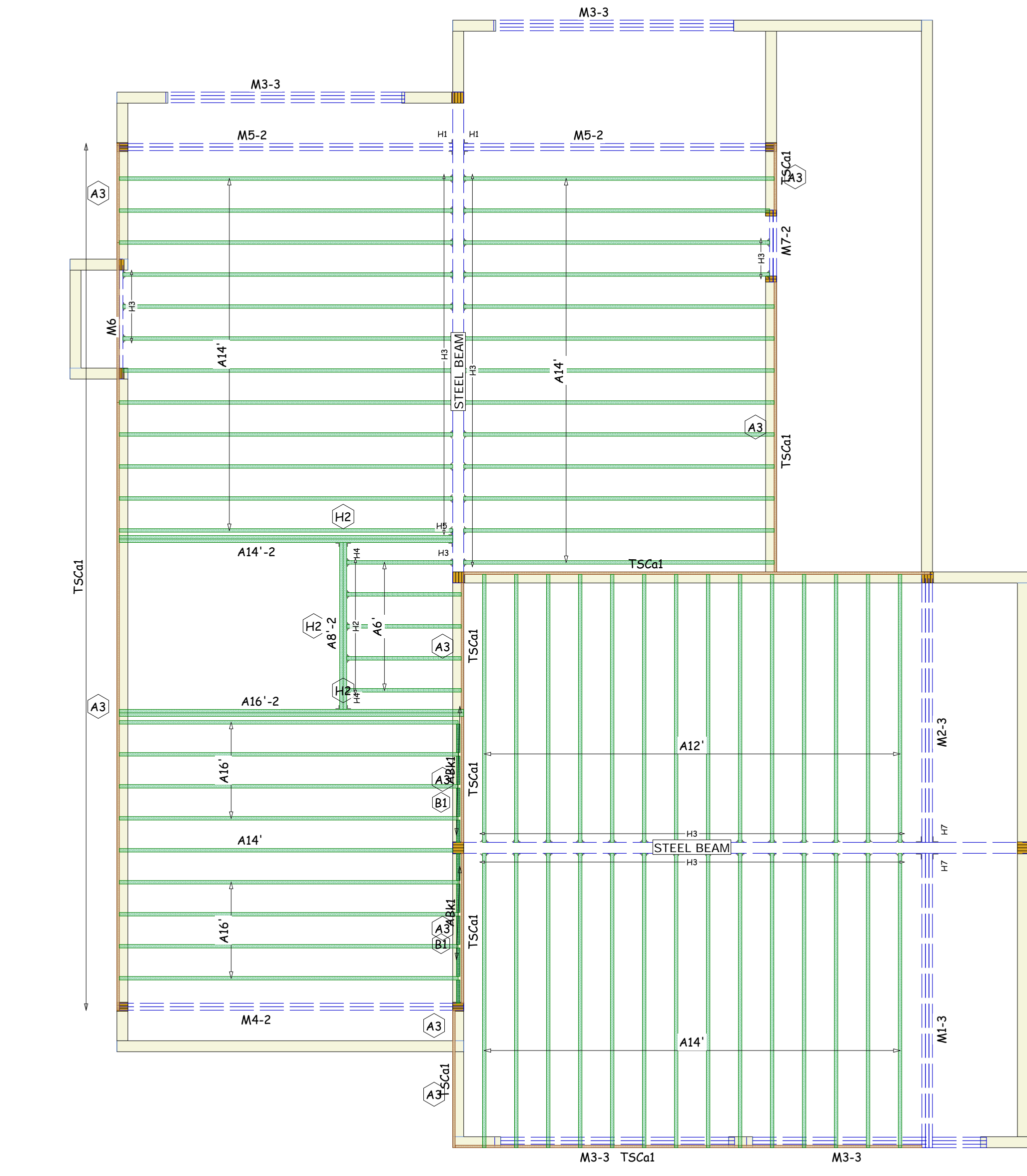
Joists are unstable until braced laterally.
 Bracing includes:
 • Blocking • Sheathing • Stud Lines
 • Hangers • Rim Board • Top Plate

DO NOT walk on joists until braced. **INJURY MAY RESULT.**

DO NOT walk on joists that are lying flat.

DO NOT stack building materials on unshored joists. **Stack only over beams or walls.**

WARNING NOTES:
 Lack of proper bracing during construction can result in serious accidents. Observe the following guidelines:
 1. All blocking, hangers, rim boards and top plates at the end supports of the T-Joint joists must be completely installed and properly nailed.
 2. Lumber strength, the braced end wall or an existing deck, must be established at the ends of the joist. This can also be accomplished by a temporary or permanent deck (sheathing) fastened to the first 4 feet of joist at the end of the bay.
 3. Safety bracing of end joists must be installed to a braced end wall or sheathed area (see note 2) and for each joist. Without this bracing, backing sideways or rollover is highly probable under light construction loads - such as a worker or one bag of completed sheathing.
 4. Sheathing must be completely attached to each T-Joint joist before additional loads can be placed on the system.
 5. Ends of joists must remain braced on both the top and bottom flanges.
 6. The flanges must remain straight within 1/2" from true alignment.
 ▲ Weyerhaeuser, Level®, Microllam®, Parallelam®, Glens® Floors®, TimberStrand®, T-Joint®, T-Joint and Truss Joists® are registered trademarks of Weyerhaeuser NR. © 2012 Weyerhaeuser NR Company. All rights reserved.



PlotID	Qty	Manuf	Product	Design Method	Face Nails	Top Nails	Member Nails	Skew	Slope	Backer Blks	Filler	Web Stiff
H1	2	Simpson	H6US410	Geometry Only	46- 16d common	-	16- 16d double shear	-	-	No	No	No
H2	5	Simpson	IUS1.81/9.5	Geometry Only	-	-	-	-	-	1	Yes	No
H3	59	Simpson	IUS1.81/9.5	Geometry Only	8- 10d x 1-1/2	-	-	-	-	No	No	No
H4	2	Simpson	IUS3.56/9.5	Geometry Only	10- 10d x 1-1/2	-	-	-	-	1	Yes	No
H5	1	Simpson	IUS3.56/9.5	Geometry Only	10- 10d x 1-1/2	-	-	-	-	No	No	No
H7	2	Simpson	H6US50/10	Geometry Only	46- 16d common	-	16- 16d double shear	-	-	No	No	No

PlotID	Length	Product	Plies	Net Qty
A16'-2	16' 0"	9 1/2" TJI@ 110	2	2
A16'	16' 0"	9 1/2" TJI@ 110	1	8
A14'-2	14' 0"	9 1/2" TJI@ 110	2	2
A14'	14' 0"	9 1/2" TJI@ 110	1	40
A12'	12' 0"	9 1/2" TJI@ 110	1	14
ABK1	10' 1 7/8"	9 1/2" TJI@ 110	1	1
A8'-2	8' 0"	9 1/2" TJI@ 110	2	2
A6'	6' 0"	9 1/2" TJI@ 110	1	5
M1-3	14' 0"	1 3/4" x 11 7/8" 1.9E Microllam@ LVL	3	3
M2-3	12' 0"	1 3/4" x 11 7/8" 1.9E Microllam@ LVL	3	3
M3-3	10' 0"	1 3/4" x 11 7/8" 1.9E Microllam@ LVL	3	12
M4-2	16' 0"	1 3/4" x 9 1/2" 1.9E Microllam@ LVL	2	2
M5-2	14' 0"	1 3/4" x 9 1/2" 1.9E Microllam@ LVL	2	4
M6	6' 0"	1 3/4" x 9 1/2" 1.9E Microllam@ LVL	1	1
M7-2	4' 0"	1 3/4" x 9 1/2" 1.9E Microllam@ LVL	2	2
TSCo1	16' 0"	1 1/4" x 9 1/2" 1.3E TimberStrand@ LSL	1	8

PlotID	Length	Product	Plies	Net Qty
	6' 11 1/2"	2x6 Filler Blocks	1	1
	2' 0"	2x6 Filler Blocks	1	2
	1' 0"	5/8" or 3/4" Backer Blocks	1	7
		23/32"x48"x96" Weyerhaeuser Edge Gold Panel (0/24) T&G SF	1	39

Length	Product
972' 1 7/8"	9 1/2" TJI@ 110
198' 0"	1 3/4" x 11 7/8" 1.9E Microllam@ LVL
102' 0"	1 3/4" x 9 1/2" 1.9E Microllam@ LVL
128' 0"	1 1/4" x 9 1/2" 1.3E TimberStrand@ LSL
10' 11 1/2"	2x6 Filler Blocks
7' 0"	5/8" or 3/4" Backer Blocks

CONTRACTOR TO VERIFY ALL FRAMING AREAS, DIMENSIONS, OPENINGS, LOADING CONDITIONS, ETC. WITH ARCHITECT/ENGINEER PRIOR TO CONSTRUCTION TO ENSURE COMPLIANCE WITH ARCHITECTURAL DRAWINGS.

THINK SAFETY. READ INSTALLATION INFORMATION BEFORE PROCEEDING. A COMPLETE JAVELIN LAYOUT INCLUDES THE ILEVEL FRAMER'S POCKET GUIDE.

iLevel® Green Estimator

Contribution to National Green Bldg Std:	36
Contribution to LEED® for Homes:	1

The points identified above indicate the potential number of green building points allowed by the ICC-700 2008 National Green Building Standard or the U.S. Green Building Council's LEED® for Homes based on the iLevel® structural frame solutions represented on this project. You are advised to confirm point calculations with the appropriate authorized organization. Contact Level Technical Services for recommendations on achieving additional green points.

BlueInx Corporation
 419 Maple Street
 Bellingham, MA 02019
 Phone: (508) 966-5546
 Fax: (508) 966-5553
 Plans may also be e-mailed to: BluePlans@blueinxco.com

SECOND FLOOR LAYOUT
 CARSON RESIDENCE
 PORTLAND, MAINE

DATE: 1/19/2018
 SCALE: 1/4" = 1'-0"
 DRAWN BY: Guy Poisson

REV	DATE	DESCRIPTION
A		
B		
C		
D		
E		

PROJECT NUMBER:

SHEET
2 OF 2

BlueInx now offers Precision End Trim Pre-Cut Blocking panels for on center spacings of 12", 16" and 24". All panels are undercut by 7/8" for ease of installation. Speak with your sales representative or design team for more information on these and other great products specified on this plan.