
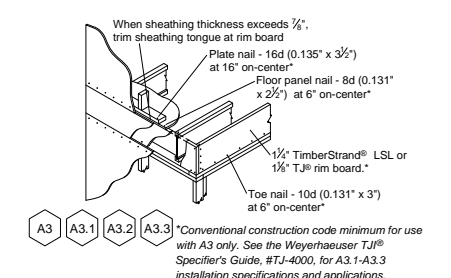


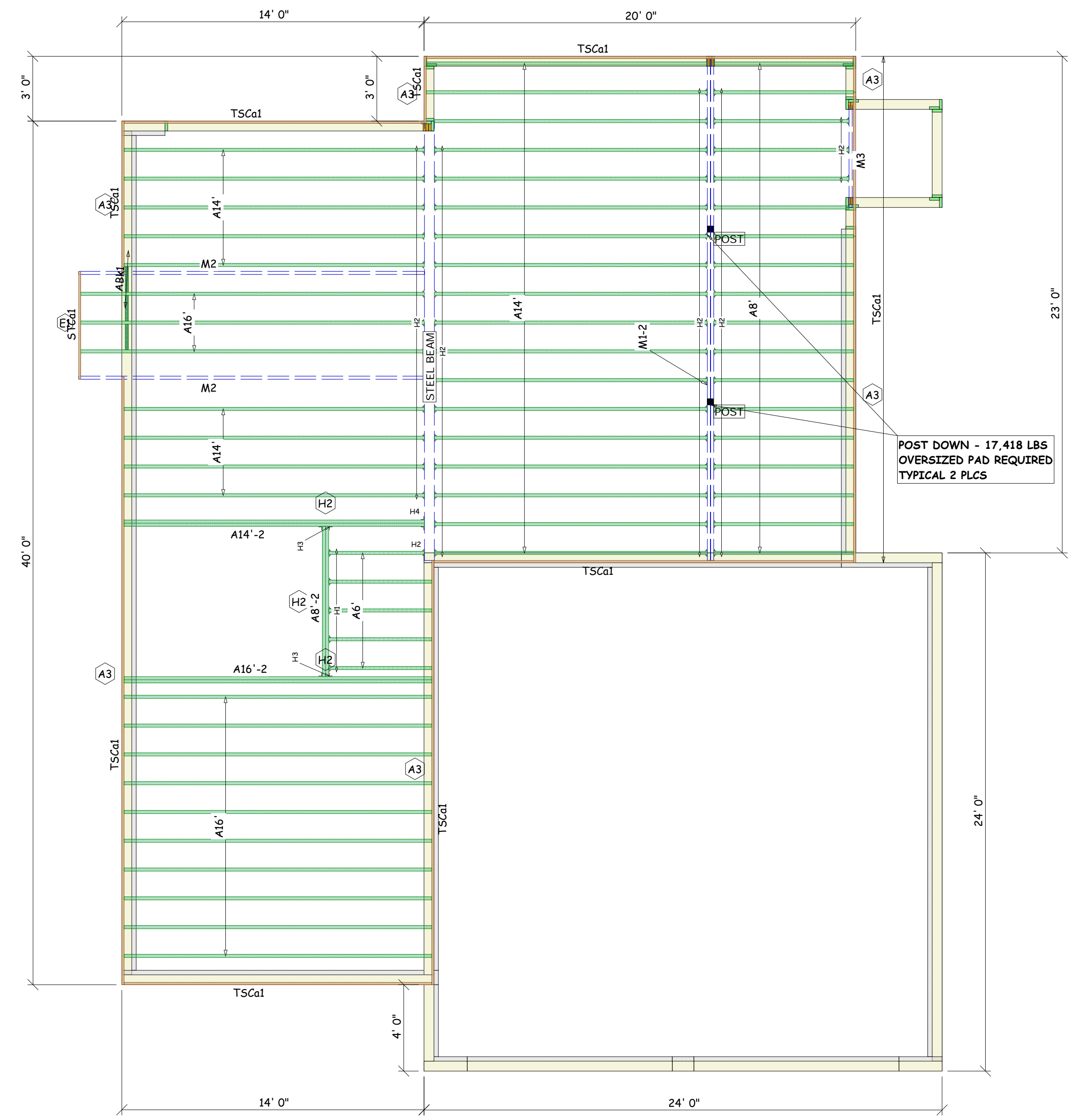
**Structural Framers' Pocket Guide**  
 Access with your Smartphone  
<http://www.level.com/literature/IJ-9001.pdf>



Weyerhaeuser



THINK SAFETY. READ INSTALLATION INFORMATION BEFORE PROCEEDING.  
 A COMPLETE JAVELIN™ LAYOUT INCLUDES THE ILEVEL™ FRAMER'S POCKET GUIDE.



PlotID	Qty	Manuf	Product	Design Method	Face Nails	Top Nails	Member Nails	Skew	Slope	Backer Blks	Filler	Web Stiff
H1	5	Simpson	IUS1.81/9.5	Geometry Only	8- 10d x 1-1/2	-	-	-	-	1	Yes	No
H2	65	Simpson	IUS1.81/9.5	Geometry Only	8- 10d x 1-1/2	-	-	-	-	No	No	No
H3	2	Simpson	IUS3.56/9.5	Geometry Only	10- 10d x 1-1/2	-	-	-	-	1	Yes	No
H4	1	Simpson	IUS3.56/9.5	Geometry Only	10- 10d x 1-1/2	-	-	-	-	No	No	No

PlotID	Length	Product	Plies	Net Qty
A16'-2	16' 0"	9 1/2" TJI® 110	2	2
A16'	16' 0"	9 1/2" TJI® 110	1	13
A14'-2	14' 0"	9 1/2" TJI® 110	2	2
A14'	14' 0"	9 1/2" TJI® 110	1	27
A8'-2	8' 0"	9 1/2" TJI® 110	2	2
A8'	8' 0"	9 1/2" TJI® 110	1	18
A6'	6' 0"	9 1/2" TJI® 110	1	5
ABK1	3' 6 3/4"	9 1/2" TJI® 110	1	1
M1-2	24' 0"	1 3/4" x 9 1/2" 1.9E Microllam® LVL	2	2
M2	18' 0"	1 3/4" x 9 1/2" 1.9E Microllam® LVL	1	2
M3	6' 0"	1 3/4" x 9 1/2" 1.9E Microllam® LVL	1	1
TSCa1	16' 0"	1 1/4" x 9 1/2" 1.3E TimberStrand® LSL	1	10
STCa1	12' 0"	1 1/8" x 9 1/2" TJO® Rim Board	1	1


PlotID	Length	Product	Plies	Net Qty
	6' 8 3/4"	2x6 Filler Blocks	1	1
	2' 0"	2x6 Filler Blocks	1	2
	1' 0"	5/8" or 3/4" Backer Blocks	1	7
		23/32"x48"x96" Weyerhaeuser Edge Gold Panel (0/24) T&G SF	1	33

Length	Product
839' 6 3/4"	9 1/2" TJI® 110
90' 0"	1 3/4" x 9 1/2" 1.9E Microllam® LVL
160' 0"	1 1/4" x 9 1/2" 1.3E TimberStrand® LSL
12' 0"	1 1/8" x 9 1/2" TJO® Rim Board
10' 8 3/4"	2x6 Filler Blocks
7' 0"	5/8" or 3/4" Backer Blocks

**iLevel® Green Estimator**

Contribution to National Green Bldg Std:	36
Contribution to LEED® for Homes:	1

The points identified above indicate the potential number of green building points allowed by the ICC-700 2008 National Green Building Standard or the U.S. Green Building Council's LEED® for Homes based on the iLevel® structural frame solutions represented on this project. You are advised to confirm point calculations with the appropriate authorized organization. Contact Level Technical Services for recommendations on achieving additional green points.



**BlueInX Corporation**  
 419 Maple Street  
 Bellingham, MA 02019  
 Phone: (508) 966-5546  
 Fax: (508) 966-5553

**MAIN FLOOR LAYOUT**

CARSON RESIDENCE  
 Portland, Maine

BlueInX Corporation  
 Plans may also be e-mailed to: [BluePlans@blueinlxco.com](mailto:BluePlans@blueinlxco.com)

DATE: 1/19/2018  
 SCALE: 1/4" = 1'-0"  
 DRAWN BY: Guy Poisson  
 DESIGNER: Carson Residence

REV	DATE	DESCRIPTION
A		
B		
C		
D		
E		

PROJECT NUMBER:

**Design Criteria:**  
 Floor Loading  
 Live Load = 40 psf  
 Dead Load = 12 psf

**FLOOR DESIGN ASSUMES TRUSSED ROOF.**

**ALL FRAMING 16" OC - U.N.O.**

**CONTRACTOR TO VERIFY ALL FRAMING AREAS, DIMENSIONS, OPENINGS, LOADING CONDITIONS, ETC. WITH ARCHITECT/ENGINEER PRIOR TO CONSTRUCTION TO ENSURE COMPLIANCE WITH ARCHITECTURAL DRAWINGS.**