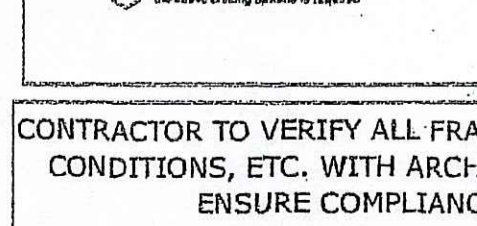
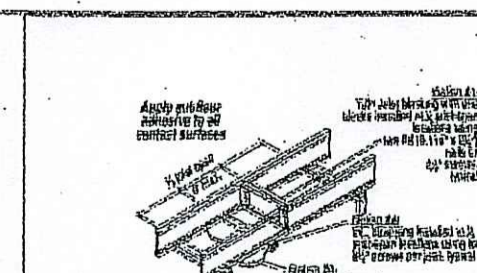
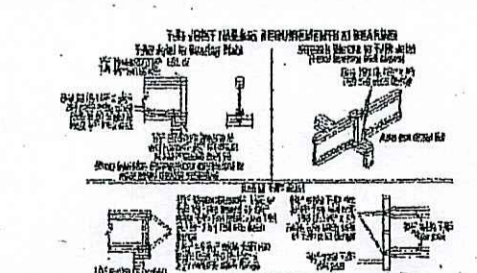


WEB SPURTS ATTACHMENT

Member	Product	Design Method	Fast Nails	Top Nails	Member Nails	Skew	Edge	Becker Blks	Filler	Web Stiff
H1	2 Simpson HHUB410	Geometry Only	30- 16d common	-	10- 16d double shear	-	-	No	No	No
H2	2 Simpson HU410	Geometry Only	14- 10d common	-	6- 10d common	-	-	No	No	No
H3	55 Simpson TU01.01/11.00	Geometry Only	10- 10d x 1-1/2	-	-	-	-	No	No	No

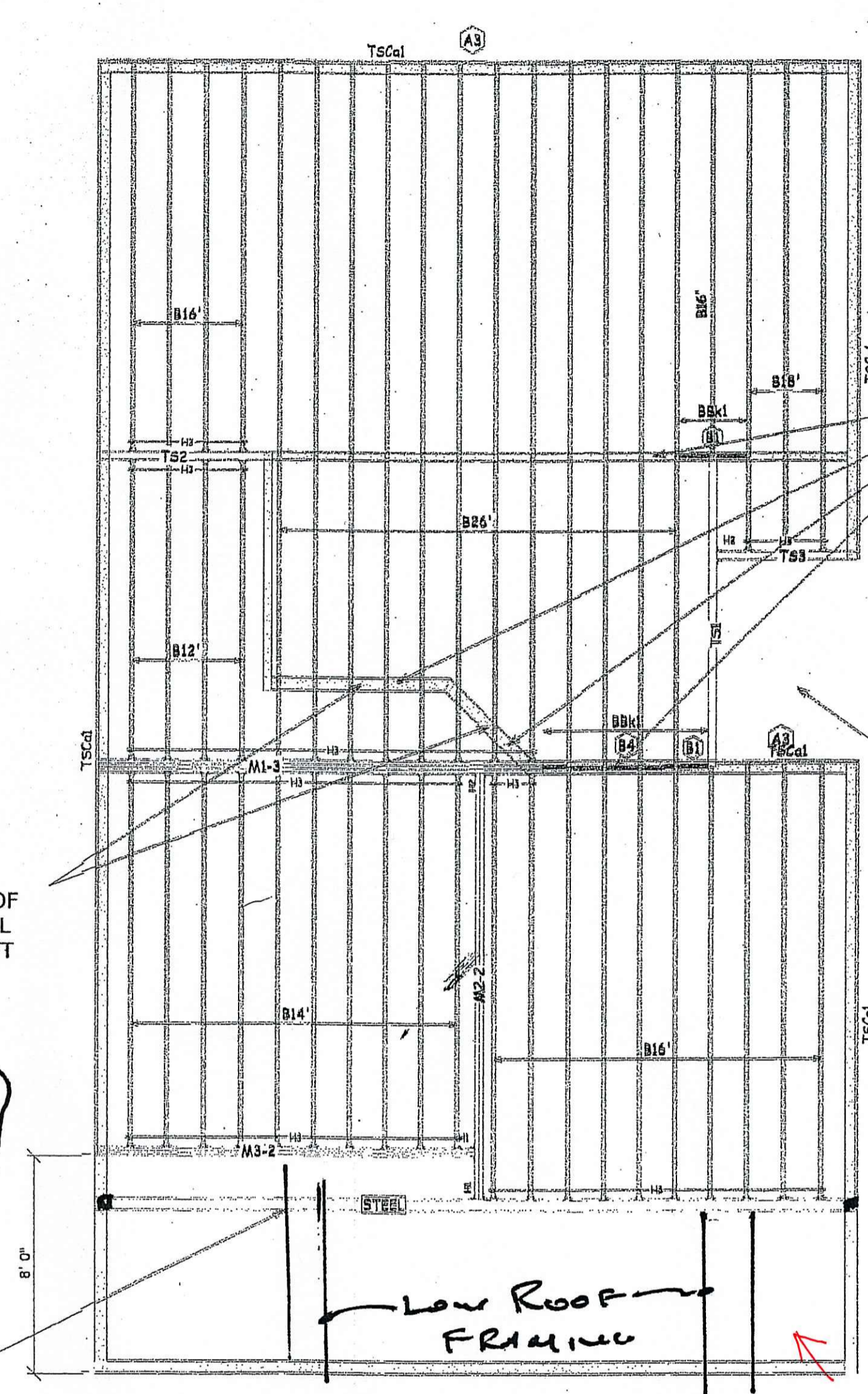


THINK SAFETY- READ INSTALLATION INFORMATION BEFORE PROCEEDING
A COMPLETE JAVELIN™ LAYOUT INCLUDES THE ILEVEL™ FRAMER'S POCKET GUIDE.

PBO = POST BY OTHERS
BBO = BEAM BY OTHERS

CONTRACTOR TO VERIFY ALL FRAMING AREAS, DIMENSIONS, OPENINGS, LOADING CONDITIONS, ETC. WITH ARCHITECT/ENGINEER PRIOR TO CONSTRUCTION TO ENSURE COMPLIANCE WITH ARCHITECTURAL DRAWINGS.

FLOOR DESIGN ASSUMES TRUSSED ROOF



MAIN ROOF ABOVE SUPPORTED BY GIRDER TRUSS

STEEL BEAM
W14x34
OR
W16x31

BEARING WALL- STRIP FOOTING REQUIRED

VERIFY SIZE AND LOCATION OF STAIRWELL PRIOR TO CONSTRUCTION

CUT TOP FLANGE OF I-JOIST OVER WALL TO PREVENT UPLIFT

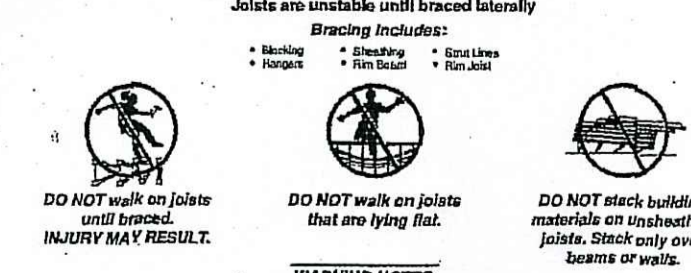
SECOND FLOOR LAYOUT
SCALE 1/4" = 1'-0"

Ceiling joists 2x6 at 16 oc. with LUS 262 at steel beam
Roof Rafter 2x8 at 16 oc with LSSU 28 on ledger

Framing Connector Summary												
Product	Qty	Manuf	Product	Design Method	Fast Nails	Top Nails	Member Nails	Skew	Edge	Becker Blks	Filler	Web Stiff
H1	2	Simpson	HHUB410	Geometry Only	30- 16d common	-	10- 16d double shear	-	-	No	No	No
H2	2	Simpson	HU410	Geometry Only	14- 10d common	-	6- 10d common	-	-	No	No	No
H3	55	Simpson	TU01.01/11.00	Geometry Only	10- 10d x 1-1/2	-	-	-	-	No	No	No

Floor					Beam/Post				
PlotID	Length	Product	Pieces	Net Qty	PlotID	Length	Product	Pieces	Net Qty
B26	26' 0"	11 7/8" TJI® 110	1	12	M1-3	18' 0"	1 3/4" x 11 7/8" 2.0E Microllam® LVL	3	3
B18	18' 0"	11 7/8" TJI® 110	1	3	M2-2	16' 0"	1 3/4" x 11 7/8" 2.0E Microllam® LVL	2	2
B16	16' 0"	11 7/8" TJI® 110	1	15	M3-2	14' 0"	1 3/4" x 11 7/8" 2.0E Microllam® LVL	2	2
B14	14' 0"	11 7/8" TJI® 110	1	10	T01	12' 0"	3 1/2" x 11 7/8" 1.5SE TimberStrand® LSL	1	1
B12	12' 0"	11 7/8" TJI® 110	1	4	T02	8' 0"	3 1/2" x 11 7/8" 1.5SE TimberStrand® LSL	1	1
BBk1	2' 0"	11 7/8" TJI® 110	1	6	T03	6' 0"	3 1/2" x 11 7/8" 1.5SE TimberStrand® LSL	1	1
BBk1	1' 0"	11 7/8" TJI® 110	1	1					
TSCal	16' 0"	1 1/4" x 11 7/8" 1.3E TimberStrand® LSL	1	7					
		23/32"x48"x96" Weyerhaeuser Edge Gold Panel (0/24) T&G SF	1	35					

WARNING

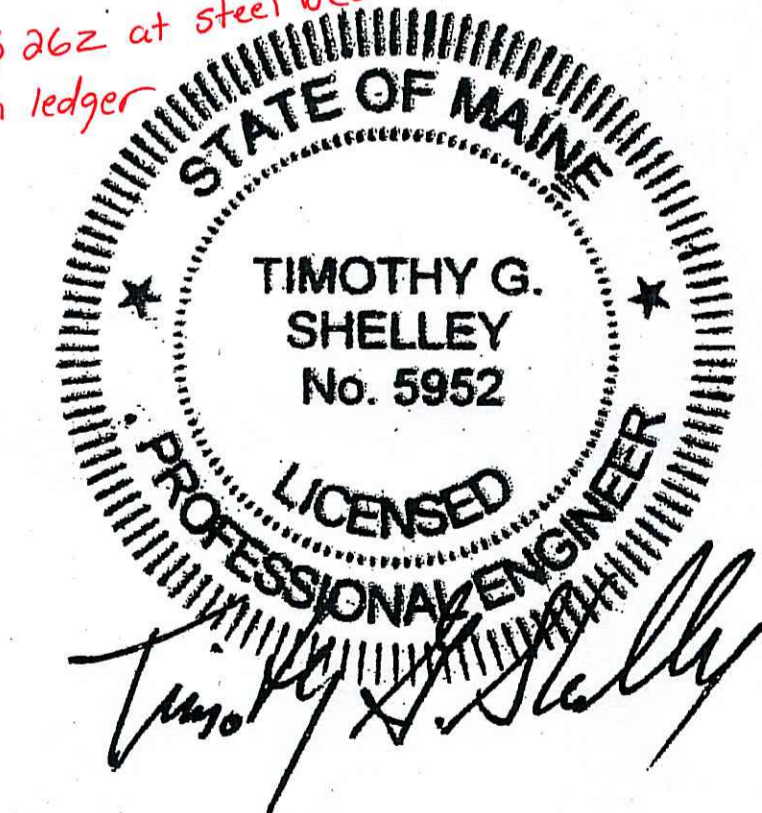


Joists are unstable until braced bilaterally.
Bracing includes:
• Blocking
• Sheathing
• Stakes
• Straps

DO NOT walk on joists until braced.
DO NOT walk on joists that are lying flat.
DO NOT stack building materials on unbraced joists. Stack only over beams or walls.

Lack of proper bracing during construction can result in serious accidents. Observe the following guidelines:
1. All blocking, bracing, air bracing and air bracing at the end and supports of the joists must be completely installed and properly braced.
2. Ceiling strength, the floor and ceiling or ceiling and floor must be braced for the entire floor. The top and bottom of the joist must be braced for the entire floor.
3. Ceiling bracing or ceiling strength must be braced in a truss or other braced form for the entire floor.
4. Without the bracing, building ways or other bracing is highly probable under light construction loads - such as a number of workers and materials.
5. Bracing must be completely installed to each joist before additional loads can be placed on the joists.
6. Bracing must be installed to each joist for the top and bottom flanges.
7. The joist must remain straight until the top and bottom flanges are braced.

Weyerhaeuser, LVLam, Microllam, PanelDeck, Silent Floor, TimberStrand, T&G and Top Joist are registered trademarks of Weyerhaeuser. © 2019 Weyerhaeuser. All rights reserved.



Design Criteria:
Floor Loading
Live Load = 40 psf
Dead Load = 12 psf

A-9
2nd floor framing

iLevel® Green Estimator

Contribution to National Green Bldg Std:

Contribution to LEED® for Homes:

The points identified above indicate the potential number of green building points allowed by the 2009-2012 National Green Building Standard or the U.S. Green Building Council's LEED® for Homes based on the LVLam structural frame solutions represented on this project. You are advised to confirm point calculations with the appropriate authorized organization. Contact LVLam Technical Services for recommendations on achieving additional green points.

BlueLinx

BlueLinx Corporation

419 Maple Street
Bellingham, MA 02019
Phone: (508) 966-5546
Fax: (508) 966-5553

SECOND FLOOR LAYOUT

JAKE & CHRIS SMALL
Portland, Maine

DATE: 7/15/2017
SCALE: 1/4" = 1'-0"
DRAWN BY: Chris Bennett

REV	DATE	DESCRIPTION
1		
2		
3		
4		
5		

PROJECT NUMBER:

BlueLinx now offers Precision End Trim Pre-Cut Blocking panels for on center spacings of 12", 16", 24" and 32". All panels are undercut by 1/8" for ease of installation. Speak with your sales representative or design team for more information on areas and other great products available on this plan.