

DRAWINGS ARE PROVIDED BY HAMMOND LUMBER COMPANY AS A SERVICE TO THE CUSTOMER. THESE DRAWINGS ARE FOR ILLUSTRATIVE AND INFORMATIONAL PURPOSES ONLY. THE INFORMATION PRESENTED IN THESE DRAWINGS IS NOT PREPARED OR REVIEWED BY A REGISTERED PROFESSIONAL ENGINEER OR ARCHITECT. HAMMOND LUMBER COMPANY SUGGESTS THAT ITS CUSTOMERS SEEK THE SERVICES OF A REGISTERED ARCHITECT TO OBTAIN TECHNICAL ADVICE AND ASSISTANCE. HAMMOND LUMBER COMPANY'S DRAWINGS ARE NOT TO BE USED AS A BASIS FOR CONSTRUCTION AND HAMMOND LUMBER COMPANY DISCLAIMS ANY RESPONSIBILITY IF THEY ARE SO USED.

DATE	1/28/2011
REVISED	
BY	JHO
DATE	1/11/2011
BY	JHO
DATE	8/7/2011
BY	JHO
DATE	Friday, September 23, 2011
SCALE	AS NOTED
SCALE	6 OF 6
FOR	6 OF 6

DRAWING: CN10195

PORTLAND

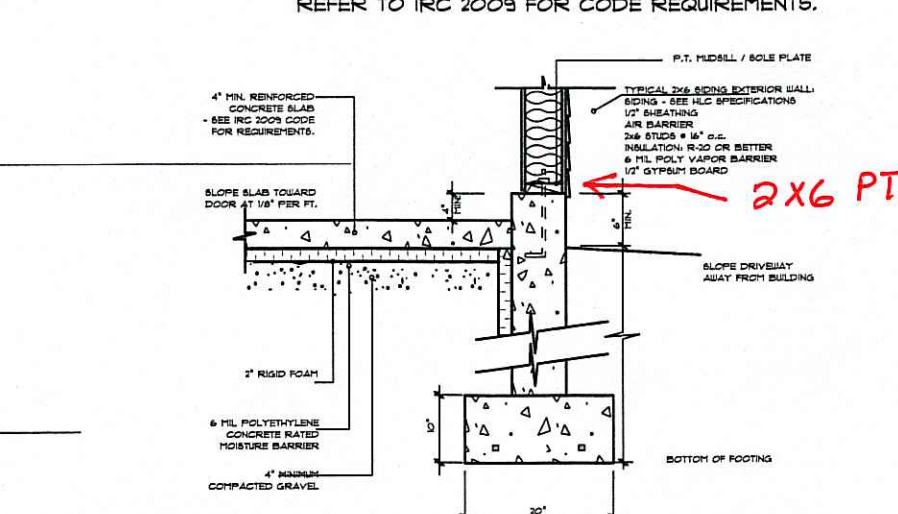
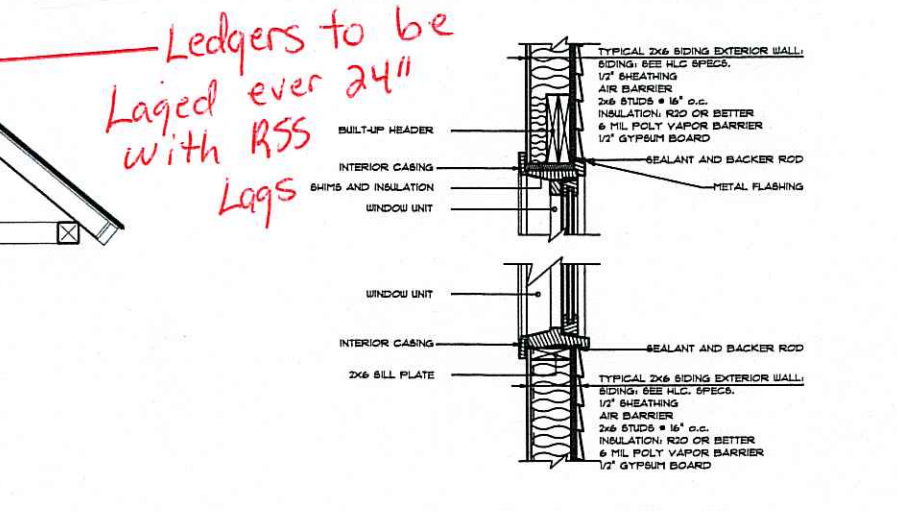
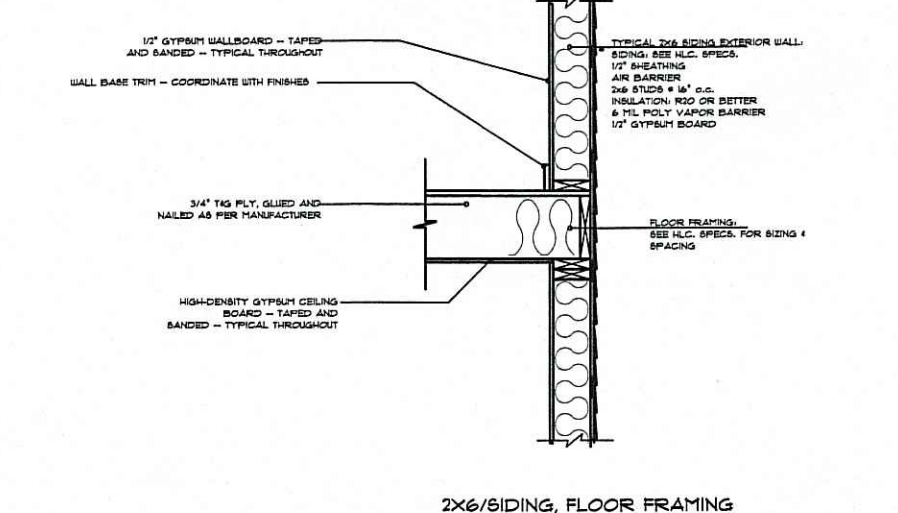
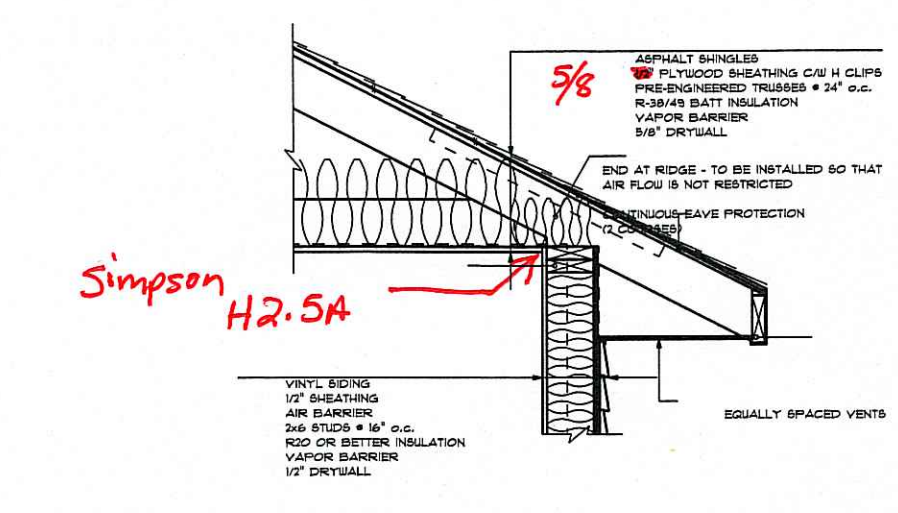
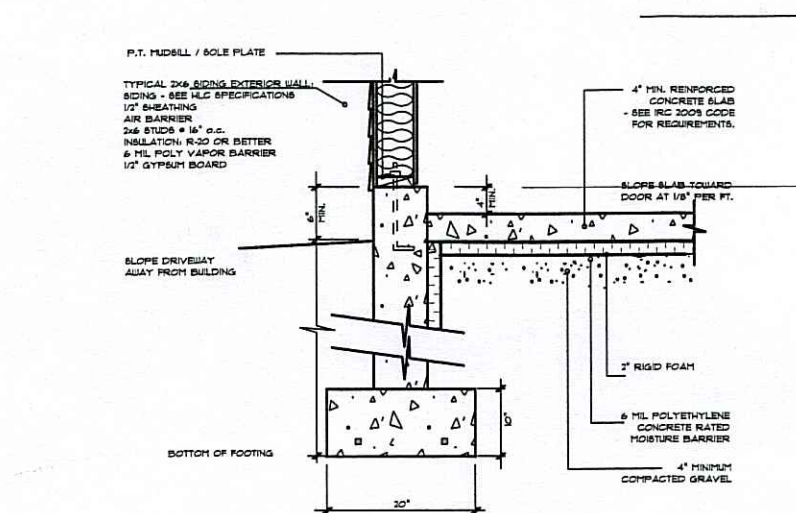
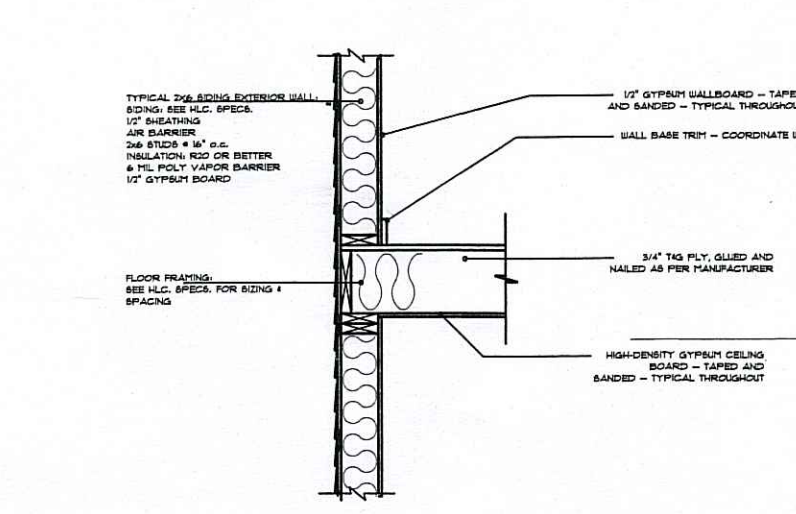
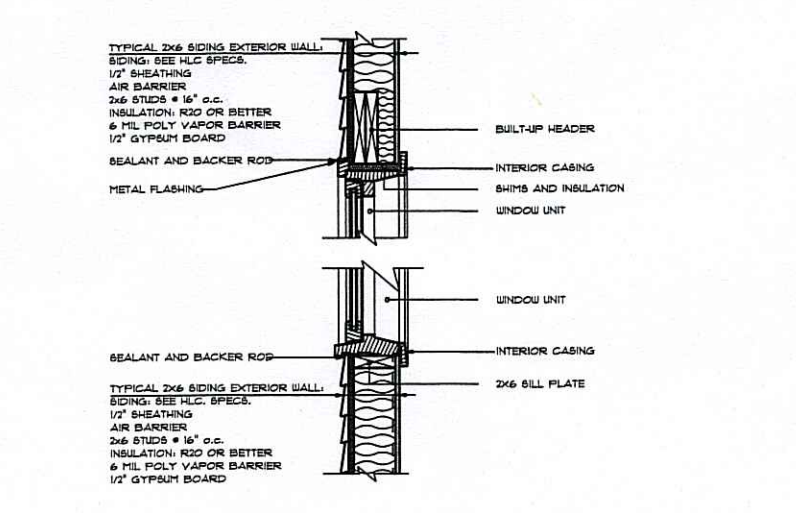
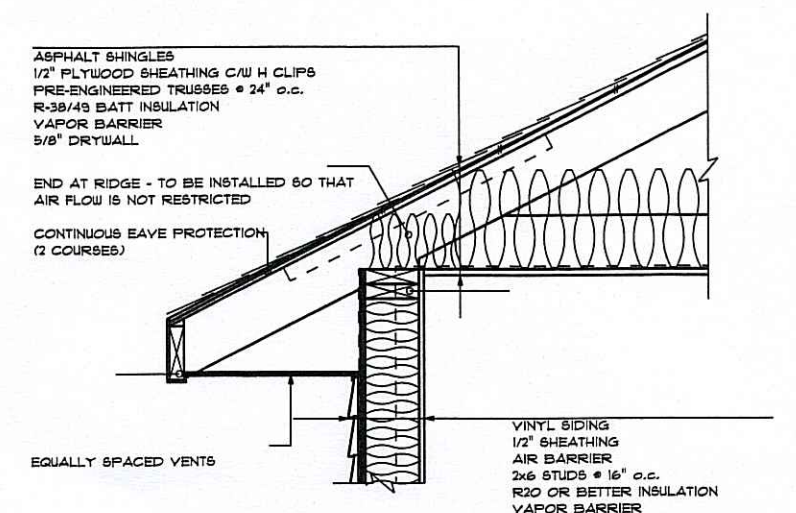
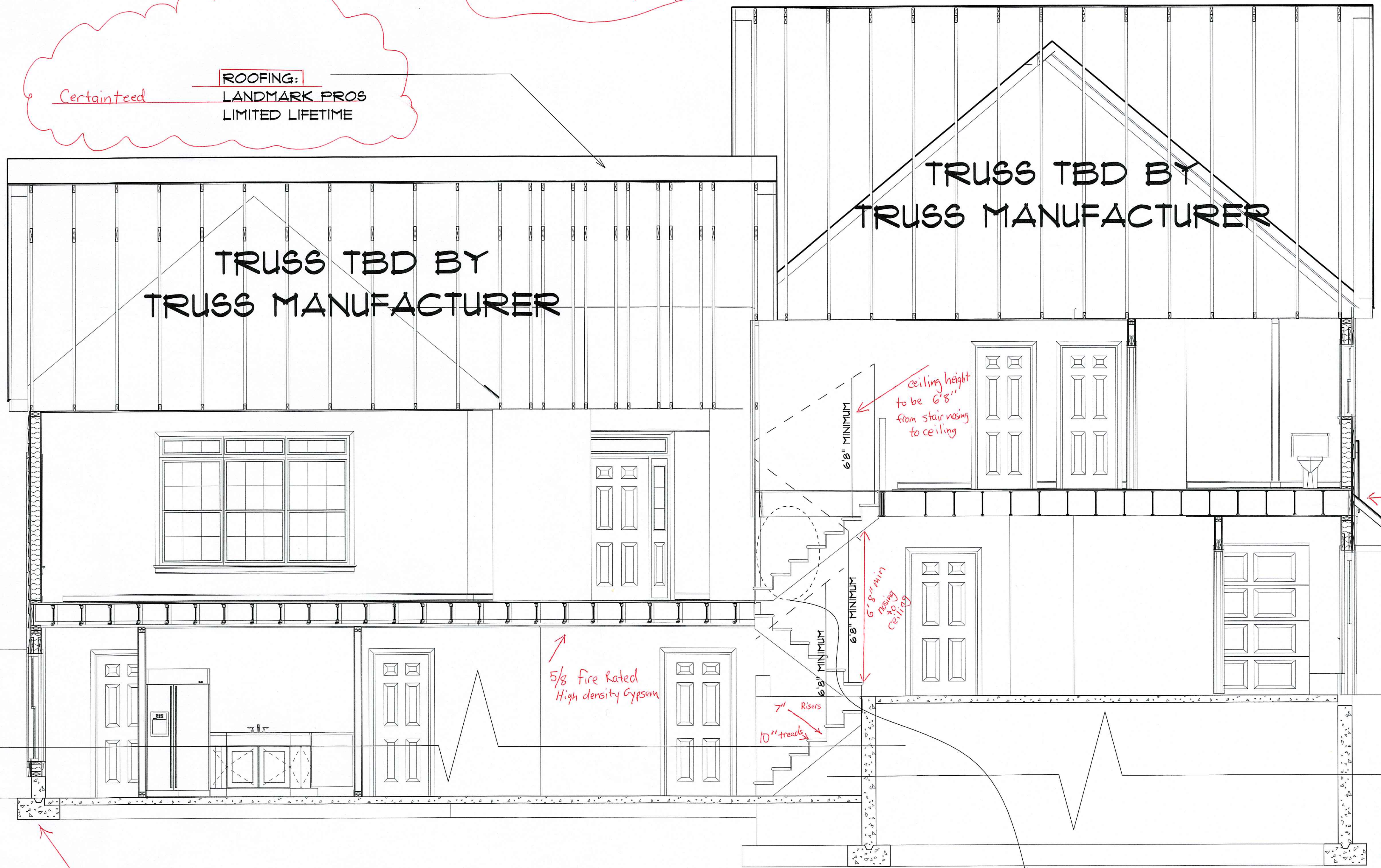
JAKE & CHRIS SMALL
 62X48 CONTEMPORARY

OWN

Mechanical Fasteners
 * Roof and trusses will be fastened with H 2.5 Hurricane fasteners
 See A-8 and A-9 for the floor systems hangers and connections
 Truss to Girders Trusses connected with Hus 28 connectors
 * See 1st and second floor framing layouts Page A-8 and A-9 for the fasteners/Hangers.

All Sheeting 8d ring nail
 All Framing 16d common
 All PT framing will be Galvanized

CertainTeed
ROOFING:
 LANDMARK PROS
 LIMITED LIFETIME



4 ft minimum of Frost Protection

ceiling height to be 6'8\"/>

6'8\"/>

5/8 Fire Rated High density Gypsum

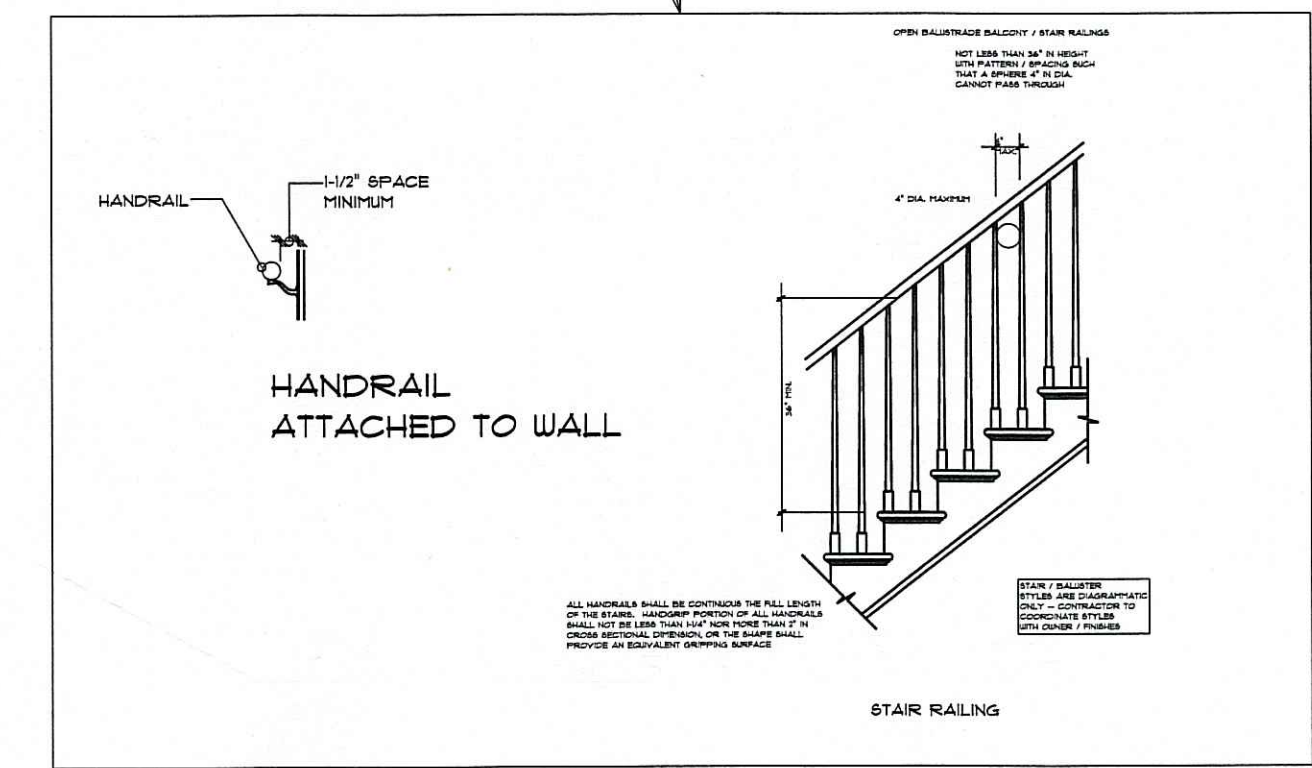
Ledgers to be Laged over 2x4\"/>

4ft of Frost protection minimum

CROSS SECTION

TYPICAL - NOT TO SCALE

HAMMOND LUMBER COMPANY HAS SUPPLIED THIS DRAWING FOR ILLUSTRATIVE AND INFORMATIONAL PURPOSES ONLY. THE HOMEOWNER/CONTRACTOR IS RESPONSIBLE FOR ENSURING THAT THE MATERIALS CHOSEN WILL COMPLY WITH LOCAL BUILDING CODES AND/OR STANDARD BUILDING PRACTICES. HAMMOND LUMBER COMPANY SUGGESTS THAT 18\"/>



SPECIFY TREAD: 10\"/>
 SPECIFY RISER: 7\"/>

Cross Section
 Plan +
 Stair Railing plan
 A7

