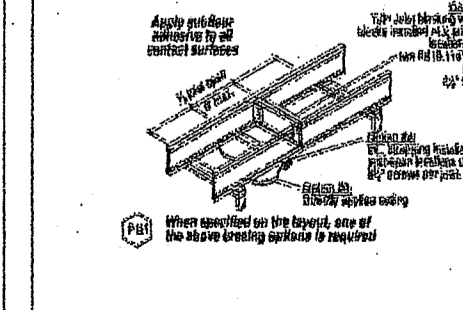
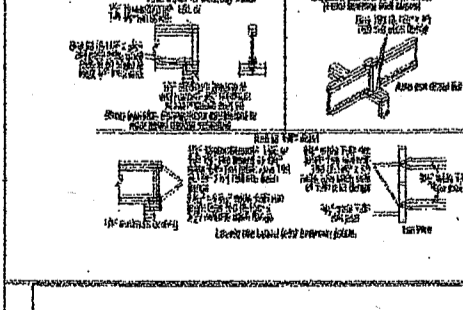
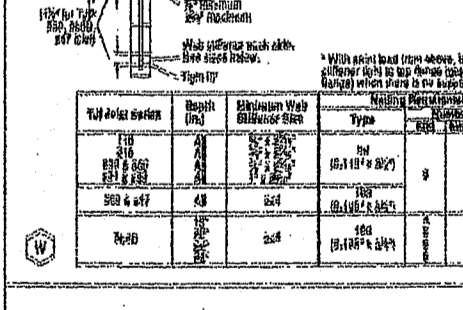
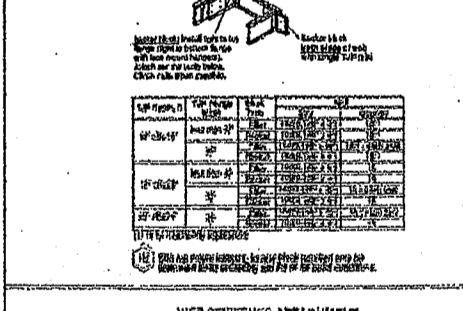
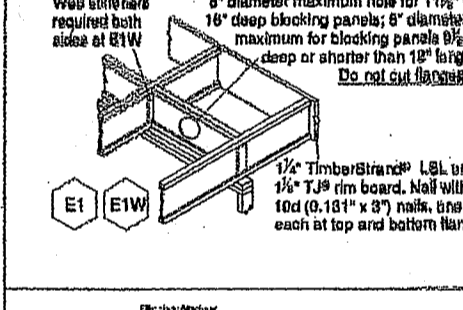
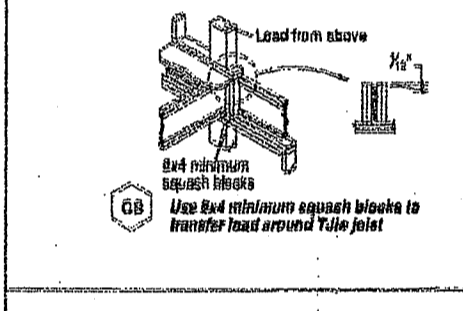
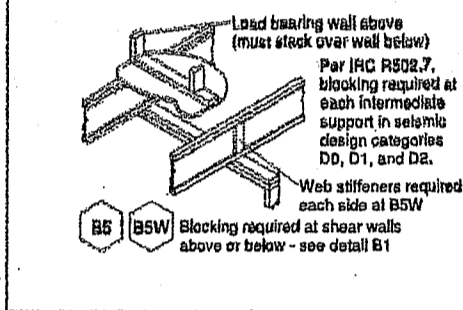
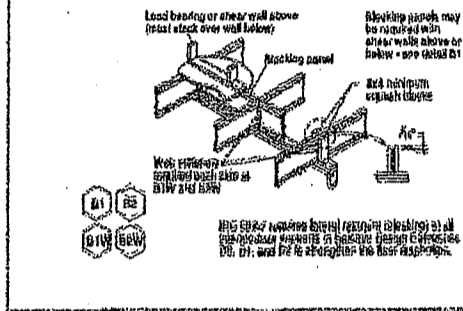
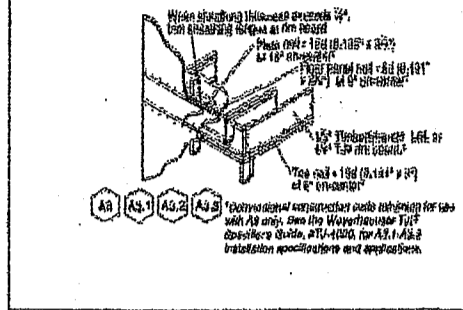


Hammond Lumber Company

Structural Framers' Pocket Guide



Access with your smartphone



CONTRACTOR TO VERIFY ALL FRAMING AREAS, DIMENSIONS, OPENINGS, LOADING CONDITIONS, ETC. WITH ARCHITECT/ENGINEER PRIOR TO CONSTRUCTION TO ENSURE COMPLIANCE WITH ARCHITECTURAL DRAWINGS.

THINK SAFETY! READ INSTALLATION INFORMATION BEFORE PROCEEDING. A COMPLETE JAVELINTM LAYOUT INCLUDES THE ILEVELTM FRAMER'S POCKET GUIDE.

PBO = POST BY OTHERS
BBO = BEAM BY OTHERS

WARNING
Joints are unstable until braced laterally.

- Nailing
- Shear
- Buckling
- Pull-out

DO NOT walk on joints until secured.

DO NOT walk on joints that are lying flat.

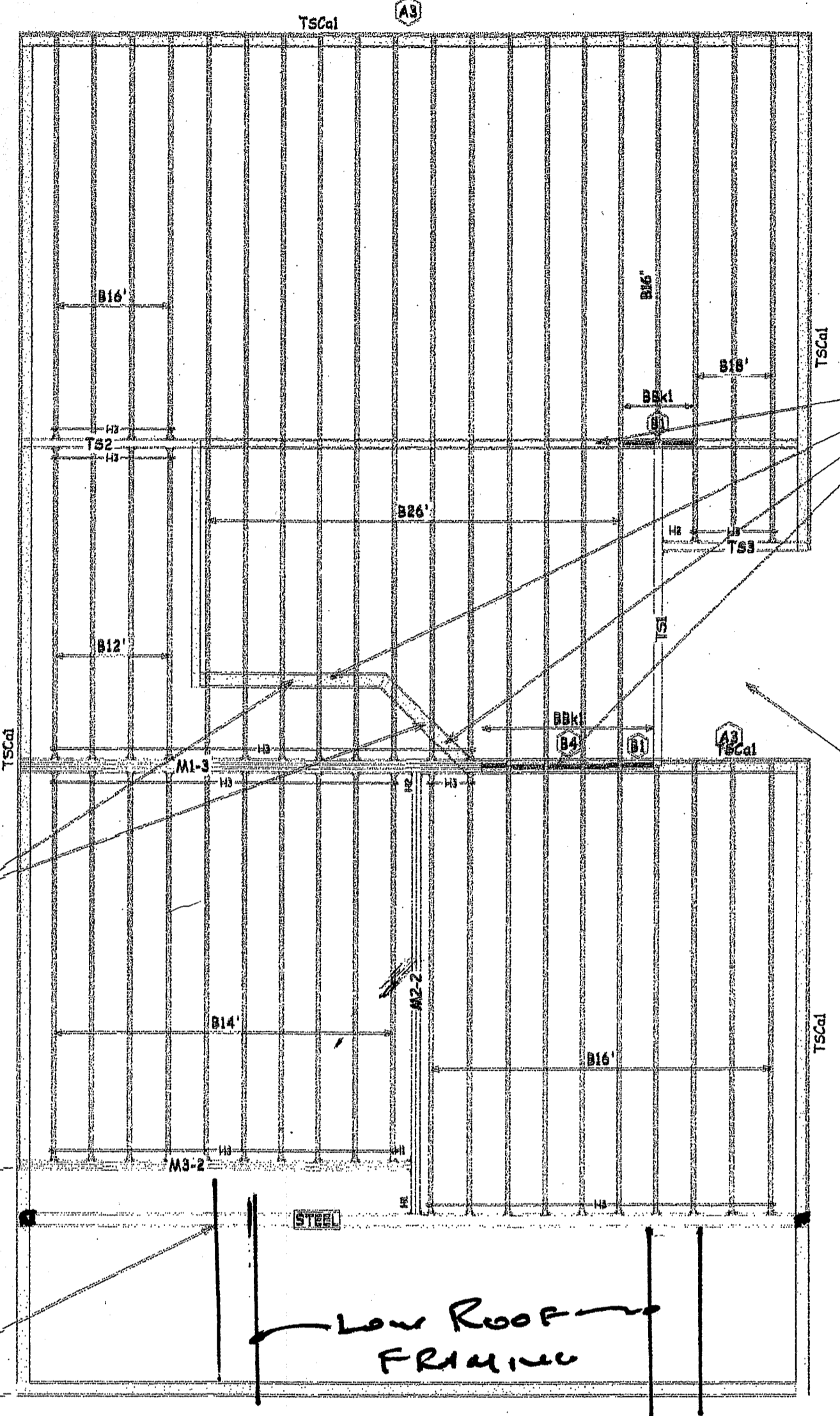
DO NOT stack building materials on unbraced joints. Stack only over beams or walls.

WARNING NOTES:
Lack of proper bracing during construction can result in serious accidents. Observe the following guidelines:

1. All blocking, hangers, end bracing and end bracing at the end supports of the joist must be completely installed and properly nailed.
2. Lateral strength, the transfer of load to an end support, must be established at the ends of the joist. This may also be accomplished by a temporary or permanent end bracing between the first end of joist at the end of the joist.
3. Lateral strength of the structure must be established in a braced end wall or otherwise prior to the installation of the joist.
4. Shear walls must be completely installed by the time the joist is fully installed and braced.
5. The joist must be completely installed by the time the joist is fully installed and braced.
6. The joist must be completely installed by the time the joist is fully installed and braced.

Weyerhaeuser, LVL, MicroLam, Parallel, Steel Joist, TimberStrand® LSL, T&G, T&G and T&G are registered trademarks of Weyerhaeuser. © 2013 Weyerhaeuser NA Company. All rights reserved.

FLOOR DESIGN ASSUMES TRUSSED ROOF



BEARING WALL- STRIP FOOTING REQUIRED

VERIFY SIZE AND LOCATION OF STAIRWELL PRIOR TO CONSTRUCTION

CUT TOP FLANGE OF I-JOIST OVER WALL TO PREVENT UPLIFT

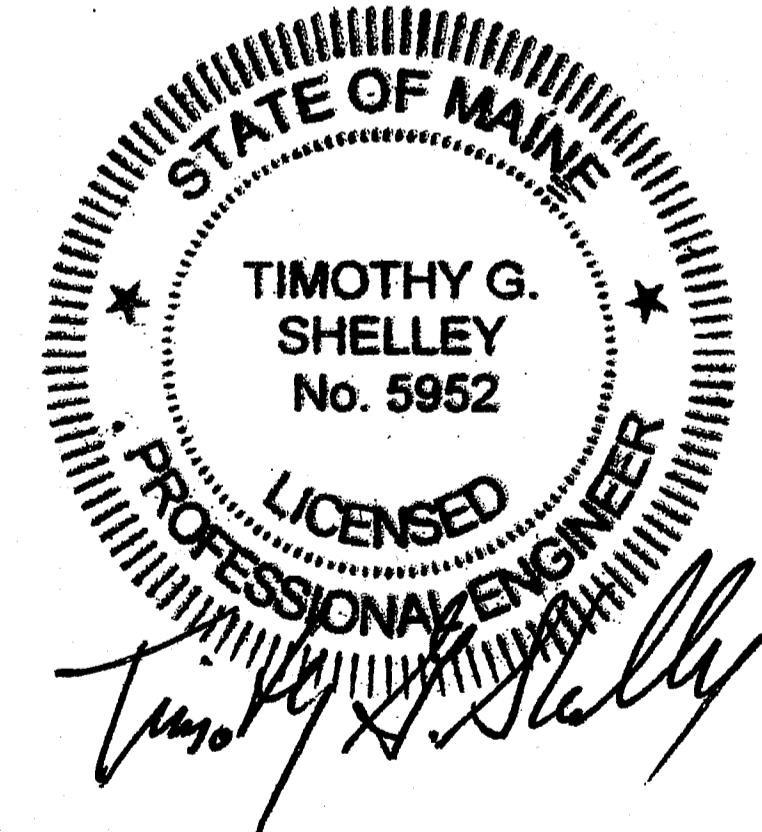
MAIN ROOF ABOVE SUPPORTED BY GIRDER TRUSS

STEEL BEAM
W14x34
OR
W16x31

SECOND FLOOR LAYOUT
SCALE 1/4" = 1'-0"

Framing Connector Summary												
Block ID	Qty	Manuf	Product	Design Method	Fase Nails	Top Nails	Member Nails	Skew	Slope	Becker Blks	Filler	Web Stiff
H1	2	Simpson	HU410	Geometry Only	30- 16d common	-	10- 16d double shear	-	-	No	No	No
H2	2	Simpson	HU410	Geometry Only	14- 16d common	-	6- 10d common	-	-	No	No	No
H3	55	Simpson	TU01.B1/11.B8	Geometry Only	10- 10d x 1-1/2	-	-	-	-	No	No	No

Floor				Beam/Post			
PlotID	Length	Product	Pieces	PlotID	Length	Product	Pieces
B26	26' 0"	11 7/8" TJI® 110	1	M1-3	18' 0"	1 3/4" x 11 7/8" 2.0E Microllam® LVL	3
B18	18' 0"	11 7/8" TJI® 110	1	M2-2	16' 0"	1 3/4" x 11 7/8" 2.0E Microllam® LVL	2
B16	16' 0"	11 7/8" TJI® 110	1	M3-2	14' 0"	1 3/4" x 11 7/8" 2.0E Microllam® LVL	2
B14	14' 0"	11 7/8" TJI® 110	1	T01	12' 0"	3 1/2" x 11 7/8" 1.55E TimberStrand® LSL	1
B12	12' 0"	11 7/8" TJI® 110	1	T02	8' 0"	3 1/2" x 11 7/8" 1.55E TimberStrand® LSL	1
BBK1	2' 0"	11 7/8" TJI® 110	1	T03	6' 0"	3 1/2" x 11 7/8" 1.55E TimberStrand® LSL	1
BBK1	1' 0"	11 7/8" TJI® 110	1				
TSC01	16' 0"	1 1/4" x 11 7/8" 1.5E TimberStrand® LSL	1				
		23/32"x48"x24" Weyerhaeuser® Edge Gold Panel (0/24) T&G 6F	1				



Design Criteria:
Floor Loading
Live Load = 40 psf
Dead Load = 12 psf

A-9
2nd floor framing

iLevel® Green Estimator	
Contribution to National Green Bldg Std:	
Contribution to LEED® for Homes:	
The points identified above indicate the potential number of green building points earned by the 2009-2012 National Green Building Standard or the U.S. Green Building Council's LEED® for Homes based on the iLevel® structural frame solutions represented on this project. You are advised to confirm point calculations with the appropriate authorized organization. Contact iLevel Technical Services for recommendations on achievable additional green value.	

BlueLinx

BlueLinx Corporation
419 Maple Street
Bellingham, MA 02019
Phone: (508) 966-5546
Fax: (508) 966-5553

SECOND FLOOR LAYOUT
JAKE & CHRIS SMALL
Portland, Maine

DATE: 7/15/2017
SCALE: 1/4" = 1'-0"
DRAWN BY: Chris Bennett

DESCRIPTION

BlueLinx now offers Precision End Trim Pre-Cut Blocking panels for on-center blocking. Call 1-800-451-7777 for more information on these and other great products specified on this plan.

PROJECT NUMBER: