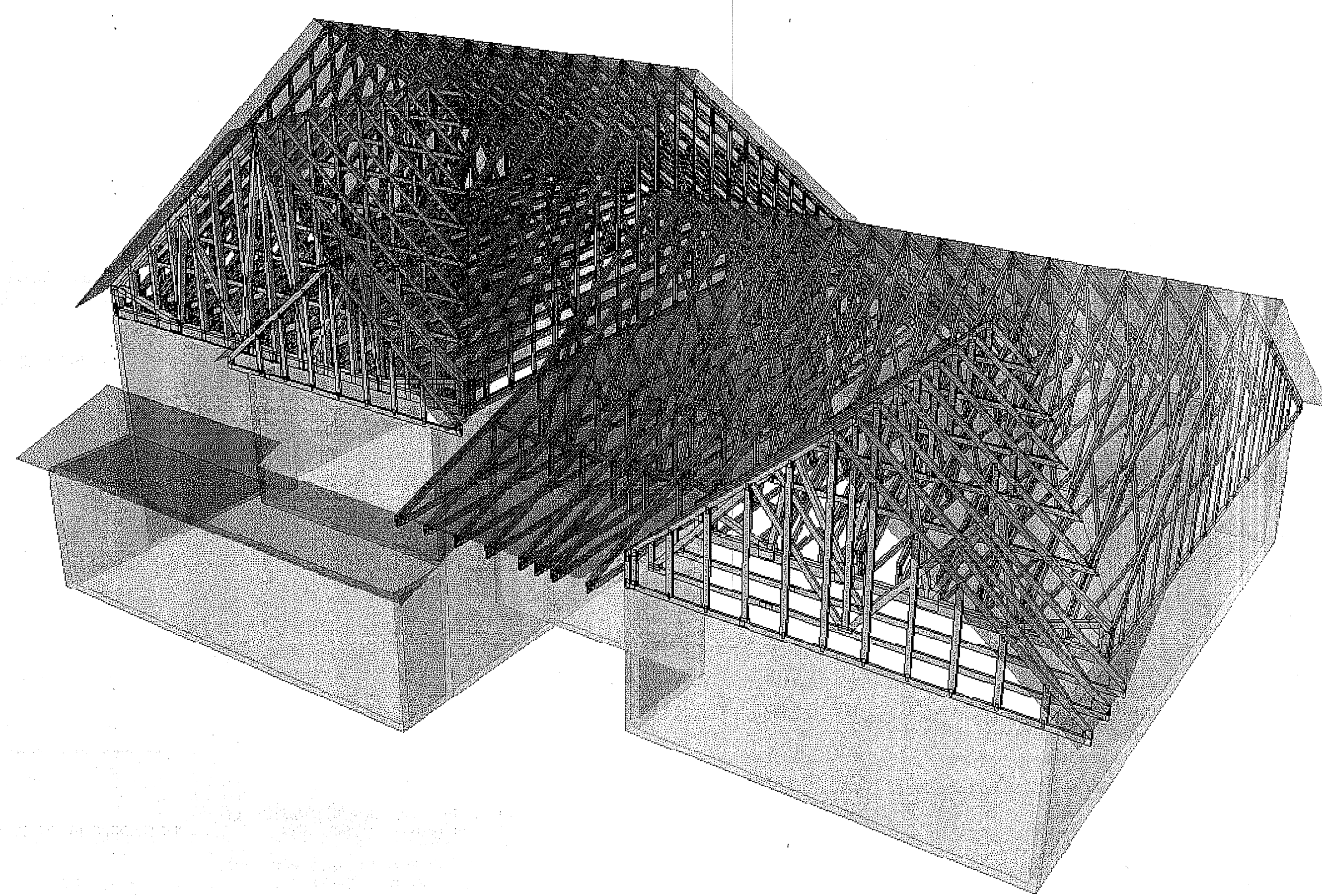
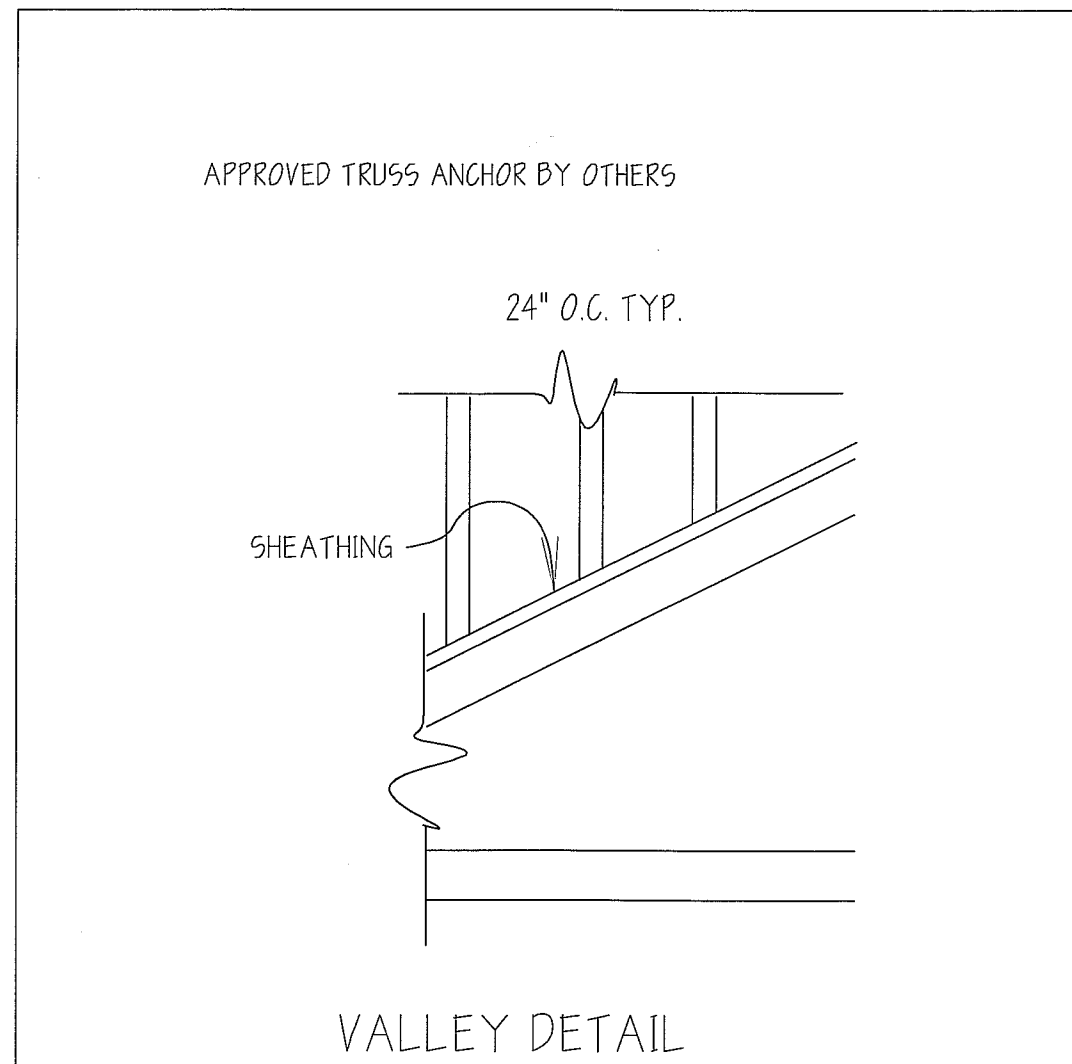


Truss Connector Total List		
Manuf	Product	Qty
USP	US28	10



ROOF TRUSS LAYOUT
SCALE: 1/4" = 1'-0"

TRUSSES @ 24"o.c. (MAX)

**APPROVAL REQUIRED.
NOT FOR CONSTRUCTION.**

JOB SPECIFIC NOTES

- A) ANY FRAMING NOT SHOWN ON THIS LAYOUT IS BY OTHERS.
- B) ANY CONNECTION NOT SHOWN ON THIS LAYOUT IS BY OTHERS.
- C) HANGERS SUPPLIED BY BOISE CASCADE ARE MANUFACTURED BY USP.

GENERAL NOTES:

- 1) FOR BRACING REQUIREMENTS & ERECTION INFORMATION SEE T.P.I. PUBLICATION BCSI-B2.
- 2) BRACING STOCK (2x4 MIN) NOT SUPPLIED BY BOISE CASCADE.
- 3) SEE TRUSS ENGINEERING FOR ADDITIONAL INFORMATION.
- 4) ALL DIMENSIONS, DESIGN LOADS & TRUSS QUANTITIES MUST BE VERIFIED PRIOR TO FABRICATION.
- 5) ADDITIONAL FRAMING AS REQUIRED BY OTHERS.
- 6) THIS DRAWING IS INTENDED TO SERVE AS A LAYOUT GUIDE FOR THE TRUSS ERECTION CREW TO ENSURE PROPER PLACEMENT & SPACING OF TRUSSES. THIS IS NOT A COMPLETE FRAMING PLAN.
- 7) FINAL APPROVAL OF THIS LAYOUT & THE TRUSS COMPONENTS TO BE SUPPLIED FOR COMPLIANCE WITH PROJECT SPECIFICATIONS REMAINS THE RESPONSIBILITY OF THE ARCHITECT & ENGINEER OF RECORD.
- 8) VALLEY BY CONTRACTOR; VALLEY MUST BE FRAMED TO ENSURE UNIFORM DISTRIBUTION OF LIVE & DEAD LOADS. TOP CHORDS OF THE TRUSSES BELOW MUST BE LATERALLY BRACED BY MEANS OF SHEATHING OR PURLINS @ 24"O.C. MAX.
- 9) SOME HANGERS AND UPLIFT CONNECTORS CANNOT BE PROPERLY INSTALLED AFTER SETTING TRUSSES AND/OR ROOF SHEATHING.
- 10) BOISE CASCADE WILL ASSUME NO RESPONSIBILITY FOR ANY DEVIATION FROM THE CONTENT OF THESE DRAWINGS WITH REGARDS TO ANY STRUCTURAL MEMBERS THAT ARE MADE WITHOUT WRITTEN AUTHORIZATION FROM BOISE CASCADE.
- 11) BOISE CASCADE WILL NOT ACCEPT ANY BACK CHARGES FOR REPAIRS OR MODIFICATIONS WITHOUT NOTIFICATION PRIOR TO WORK BEING DONE WITHOUT REASONABLE OPPORTUNITY TO REVIEW PROBLEM. BACK CHARGES MUST BE AGREED UPON BY ALL PARTIES PRIOR TO WORK BEING DONE.

Roof Truss Layout #10

JOB #: 688107	DRAWN BY: BvB	CUSTOMER: HAMMOND LUMBER	LOADING CHART (psf) TCLL = 46.2 (60# Ground Snow) TCDL = 10.0 BCLL = 0.0 BCDL = 10.0
SCALE: 1/4" = 1'-0"	DATE: 07/12/2017	JOB NAME: JAKE SMALL/CHRIS FNL	DIMENSION KEY Feet: 12 (6) 8 Sixteenths
REVISED: 7/17/2017	ADDRESS: PORTLAND, ME.	ADDRESS: PORTLAND, ME.	
Boise Cascade Materials Distribution <i>"Structural Solutions"</i>			
20 Pomerleau Street Bridleford, Maine 04005 PH 1-877-291-5276 FX 1-877-782-0999			