

Job Name:	Date:
System Reference:	



Outdoor Unit: MXZ-5C42NAHZ

### ACCESSORIES

- Three-port Branch Box (PAC-MKA30BC)
- Five-port Branch Box (PAC-MKA50BC)
- Distribution Pipe for Flare Connection (MSDD-50AR; necessary for installing two branch boxes)
- Distribution Pipe for Brazed Connection (MSDD-50BR; necessary for installing two branch boxes)
- 3/8" x 1/2" Port Adapter (MAC-A454JP)
- 1/2" x 3/8" Port Adapter (MAC-A455JP)
- 1/2" x 5/8" Port Adapter (MAC-A456JP)
- 1/4" x 3/8" Port Adapter (PAC-493PI)
- 3/8" x 5/8" Port Adapter (PAC-SG76RJ)
- Airflow Guide (PAC-SH96SG-E)

(For data on specific indoor units, see the MXZ-C Technical and Service Manual.)

Specifications			Model Name
Unit Type			MXZ-5C42NAHZ
<b>Cooling*</b> (Non-ducted / Ducted)	Rated Capacity	Btu/h	42,000 / 42,000
	Capacity Range	Btu/h	6,000 - 42,000
	Rated Total Input	W	3,130 / 3,890
<b>Heating at 47°F*</b> (Non-ducted / Ducted)	Rated Capacity	Btu/h	48,000 / 48,000
	Capacity Range	Btu/h	7,200 - 48,000
	Rated Total Input	W	3,430 / 4,350
<b>Heating at 17°F*</b> (Non-ducted/Ducted)	Rated Capacity	Btu/h	35,800 / 36,600
	Maximum Capacity		48,000 / 48,000
	Rated Total Input	W	3,650 / 4,290
<b>Heating at 5°F*</b>	Maximum Capacity	Btu/h	48,000
<b>Energy Star®</b> (ENERGY STAR products are third-party certified by an EPA-recognized Certification Body.)			Yes
<b>Electrical Requirements</b>	<b>Power Supply</b>	<b>Voltage, Phase, Hertz</b>	208 / 230V, 1-Phase, 60 Hz
	<b>Recommended Fuse/Breaker Size</b>	<b>A</b>	50
	<b>MCA</b>	<b>A</b>	42
<b>Voltage</b>	<b>Indoor - Outdoor S1-S2</b>	<b>V</b>	AC 208 / 230
	<b>Indoor - Outdoor S2-S3</b>	<b>V</b>	DC ±24
<b>Compressor</b>			Hermetic
<b>Fan Motor (ECM)</b>		<b>F.L.A.</b>	0.4+0.4
<b>Sound Pressure Level</b>	<b>Cooling</b>	<b>dB(A)</b>	50
	<b>Heating</b>	<b>dB(A)</b>	54
<b>External Dimensions (H x W x D)</b>		<b>In / mm</b>	52-11/16 x 41-11/32 x 13+1 1338 x 1050 x 330+25
<b>Net Weight</b>		<b>Lbs / kg</b>	276 / 125
<b>External Finish</b>			Munsell No. 3Y 7.8/11
<b>Refrigerant Pipe Size O.D. — Eight Ports</b>	<b>Liquid (High Pressure)</b>	<b>In / mm</b>	3/8 / 9.52
	<b>Gas (Low Pressure)</b>	<b>In / mm</b>	5/8 / 15.88
<b>Max. Refrigerant Line Length</b>		<b>Ft / m</b>	492 (150)
<b>Max. Piping Length between outdoor unit and branch boxes</b>		<b>Ft / m</b>	180 (55)
<b>Max. Piping Length after branch box</b>		<b>Ft / m</b>	82 (25)
<b>Max. Total Piping Length between branch boxes and indoor units</b>		<b>Ft / m</b>	311 (95)
<b>Max. Refrigerant Pipe Height Difference</b>	<b>If IDU is Above ODU</b>	<b>Ft / m</b>	131 (40)
	<b>If IDU is Below ODU</b>	<b>Ft / m</b>	164 (50)
<b>Connection Method</b>			Flared/Flared
<b>Refrigerant</b>			R410A

\* Rating Conditions per AHRI Standard:

Cooling | Indoor: 80° F (27° C) DB / 67° F (19° C) WB  
Cooling | Outdoor: 95° F (35° C) DB / 75° F (24° C) WB

Heating at 47° F | Indoor: 70° F (21° C) DB  
Heating at 47° F | Outdoor: 47° F (8° C) DB / 43° F (6° C) WB

Heating at 17° F | Indoor: 70° F (21° C) DB  
Heating at 17° F | Outdoor: 17° F (-8° C) DB / 15° F (-9° C) WB

# SPECIFICATIONS : MXZ-5C42NAHZ, contd.

**OPERATING RANGE:**

	Outdoor
Cooling	D.B 23 to 115°F [ D.B.-5 to 46°C ]*1
Heating	W.B. -13 to 59° F [ W.B. -25 to 15° C ]

\*1. D.B. 5 to 115° F [ D.B. -15 to 46° C ], when an optional Air Outlet Guide is installed.

**ENERGY EFFICIENCIES:**

Indoor Unit Type	SEER	EER	HSPF	COP @ 47°F	COP @ 17°F
<b>Non-ducted</b>	19.0	13.40	11.0	4.10	2.85
<b>Ducted and Non-ducted</b>	17.00	12.11	10.55	3.67	2.68
<b>Ducted</b>	15.0	10.80	10.1	3.23	2.50

**NOTES:**

- Minimum of two Indoor Units must be connected to the MXZ-5C42NAHZ.
- Minimum installed capacity cannot be less than 12,000 Btu/h.
- Total connected capacity must not exceed 130% of outdoor unit capacity.
- System can operate with only one Indoor Unit turned on.
- Information provided at 208/230V.
- For Reference:
  - MXZ-C Technical & Service Manual for detailed specifications and additional information per Indoor Unit Combination.
  - MXZ Series Multi-Zone Indoor/Outdoor Combination Table for allowed unit combinations.

**MVZ CONNECTION RULES:**

- Up to 2 MVZ's may be connected to this system\*.
- When 2 MVZ's are connected, no additional indoor units can be used\*.
- When 1 MVZ is connected, additional indoor units can be connected.
- When 1 MVZ is connected, total connected capacity must not exceed 130%.

\*No limitation to the number of units connected when the SPTB1 accessory is used, total connected capacity must not exceed 130% (refer to SPTB1 documentation for more information).

Notes:

# MXZ-5C42NAHZ SYSTEM DESIGN

Outdoor unit			MXZ-5C42NAHZ		
			4.5HP		
	Rated capacity (kBTU/h)	Cooling	42		
		Heating	48		
Refrigerant			R410A		
Connectable indoor unit	<b>Capacity</b>		Type 06 to Type 36		
	<b>Caution:</b> The indoor unit which rated capacity exceeds 36 kBTU/h (Type 36) can NOT be connected.				
	Number of units		2 to 5 units		
Total system wide capacity		29 to 130% of outdoor unit capacity (12 to 54.6 kBTU/h)			
Connectable branch box	Number of units		1 or 2 units		



Connectable indoor unit lineups (Heat pump inverter type)				Capacity class [kBTU/h]							
Model type		Model name		06	09	12	15	18	24	30	36
Wall mounted	Deluxe	MSZ-FE09/12/18NA			●	●		●			
		MSZ-FH09/12/15NA			●	●	●				
	Standard	MSZ-GE06/09/12/15/18/24NA		●	●	●	●	●	●		
Ceiling concealed	Low static pressure	SEZ-KD09/12/15/18NA			●	●	●	●			
	Middle static pressure	PEAD-A24/30/36AA4							●	●	●
4-way ceiling cassette	2 by 2 type	SLZ-KA09/12/15NA			●	●	●				
	Standard	PLA-A12/18/24/30/36BA4				●		●	●	●	●
Floor standing		MFZ-KA09/12/18NA			●	●		●			
Multi-position		MVZ-A12/18/24/30/36AA4				●		●	●	●	●

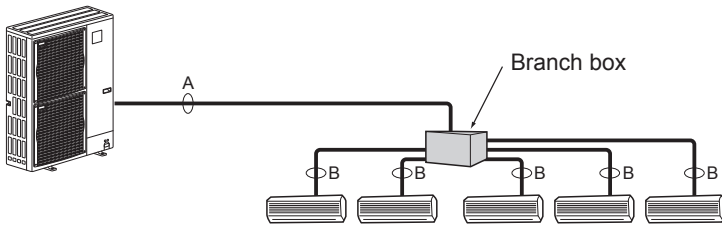


Branch box	PAC-MKA50BC	PAC-MKA30BC
Number of branches (Indoor unit that can be connected)	5 branches (MAX. 5 units)	3 branches (MAX. 3 units)

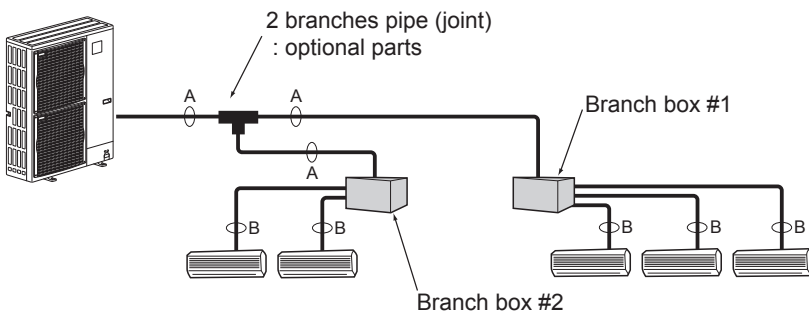
Note: A maximum of 2 branch boxes can be connected to 1 outdoor unit.

Branch Box Combinations	
Three-port	Five-port
1	0
0	1
1	1
2	0
0	2 (Up to 8 IDU)

- If Using One Branch Box  
Flare connection employed (No brazing)



- If Using Two Branch Boxes



- Installation procedure (2 branches pipe (joint))  
Refer to the installation manuals of MSDD-50AR-E and MSDD-50BR-E.

### Piping connection size

	A	B
Liquid	$\phi 9.52$ mm (3/8 inch)	The piping connection size differs according to the type and capacity of indoor units. Match the piping connection size of branch box with indoor unit. If the piping connection size of branch box does not match the piping connection size of indoor unit, use optional different-diameter (deformed) joints to the branch box side. (Connect deformed joint directly to the branch box side.)
Gas	$\phi 15.88$ mm (5/8 inch)	

# MXZ-5C42NAHZ COOLING AND HEATING CAPACITY AND CHARACTERISTICS

## 1. Method for obtaining system cooling and heating capacity:

To obtain the system cooling and heating capacity and the electrical characteristics of the outdoor unit, first add up the ratings of all the indoor units connected to the outdoor unit (see table below). For Standard Capacity Diagram, please refer to the MXZ-C Technical & Service Manual.

### (1) Capacity of indoor unit

	Model Number for indoor unit	Model 06	Model 09	Model 12	Model 15	Model 18	Model 24	Model 30	Model 36
M series	Model Capacity [kBtu/h]	6.0	9.0	12.0	14.0* <sup>1</sup> 15.0* <sup>2</sup>	17.2* <sup>3</sup> 18.0* <sup>4</sup>	22.5	—	—
P series		—	—	12.0	—	18.0	24.0	30.0	35.0
SEZ		—	8.1	11.5	14.1	17.2	—	—	—
SLZ		—	8.4	11.1	15.0	—	—	—	—
MVZ		—	—	12.0	—	18.0	24.0	30.0	36.0

\*1 The value is for MSZ-GE15NA.

\*2 The value is for MSZ-FH15NA.

\*3 The value is for MSZ-GE/FH18NA.

\*4 The value is for MSZ-FE18NA or MFZ-KA18NA.

### (2) Sample calculation

1 System assembled from indoor and outdoor unit (in this example the total capacity of the indoor units is greater than that of the outdoor unit)

- Outdoor unit MXZ-5C42NAHZ
- Indoor unit MSZ-GE09NA × 2 + MSZ-FH15NA × 2

2 According to the conditions in 1, the total capacity of the indoor unit will be:  $9.0 \times 2 + 15.0 \times 2 = 48.0$

3 The following figures are obtained from the 16.8 total capacity of indoor units, referring the standard capacity diagram in "4-3-3. MXZ-5C42NAHZ <cooling>" and "4-3-4. MXZ-5C42NAHZ <heating>".

Capacity (kBTU/h)		Outdoor unit power consumption (kW)		Outdoor unit current (A)/ 230 V	
Cooling	Heating	Cooling	Heating	Cooling	Heating
A 42.0	B 48.0	3.46	4.37	15.26	19.31

## 2. Method for obtaining the heating and cooling capacity of an indoor unit:

(1) The capacity of each indoor unit (kW) = the capacity A (or B)  $\times \frac{\text{model capacity}}{\text{total model capacity of all indoor units}}$

(2) Sample calculation (using the system described above in 4-1-1. (2) ):

#### During cooling:

- The total model capacity of the indoor unit is:  
 $9.0 \times 2 + 15.0 \times 2 = 48.0$  kBTU/h  
Therefore, the capacity of MSZ-GE09NA and MSZ-FH15NA will be calculated as follows by using the formula in 4-1-2. (1):

$$\text{Model 09} = 42.0 \times \frac{9.0}{48.0} = 7.88 \text{ kBTU/h}$$

$$\text{Model 15} = 42.0 \times \frac{15.0}{48.0} = 13.13 \text{ kBTU/h}$$

#### During heating:

- The total model capacity of indoor unit is:  
 $10.9 \times 2 + 18.0 \times 2 = 57.8$  kBTU/h  
Therefore, the capacity of MSZ-GE09NA and MSZ-FH15NA will be calculated as follows by using the formula in 4-1-2. (1):

$$\text{Model 25} = 48.0 \times \frac{10.9}{57.8} = 9.05 \text{ kBTU/h}$$

$$\text{Model 50} = 48.0 \times \frac{18.0}{57.8} = 14.95 \text{ kBTU/h}$$

# MXZ-5C42NAHZ OPERATIONAL PERFORMANCE

Operational Performance for Indoor Unit Combinations (Unit A + Unit B + Unit C + Unit D + Unit E)	Cooling Capacity Range (Btu/h)					Power Usage Range (W)	Current (208/230V)
	Heating Capacity Range (Btu/h)						
	Unit A	Unit B	Unit C	Unit D	Unit E		
6	6000	0	0	0	0	600	3.2 / 3
	7000	0	0	0	0	601	3.8 / 3.9
9	9000	0	0	0	0	700	3.7 / 3.4
	10600	0	0	0	0	901	4.9 / 5.3
12	12000	0	0	0	0	800	3.5 / 3.8
	14200	0	0	0	0	1200	6.1 / 6.6
15	15000	0	0	0	0	988	4.4 / 4.8
	17800	0	0	0	0	1500	7.3 / 7.9
18	18000	0	0	0	0	1175	5.2 / 5.8
	21400	0	0	0	0	1800	8.4 / 9.3
24	24000	0	0	0	0	1550	6.9 / 7.8
	28500	0	0	0	0	2400	10.7 / 12
30	30000	0	0	0	0	2450	10.8 / 12.1
	36800	0	0	0	0	3450	15.3 / 17
36	36000	0	0	0	0	3352	14.7 / 16.4
	45000	0	0	0	0	4499	19.8 / 22
6 + 6	6000	6000	0	0	0	800	3.5 / 3.8
	7100	7100	0	0	0	1200	6.1 / 6.6
6 + 9	6000	9000	0	0	0	988	4.4 / 4.8
	7120	10680	0	0	0	1500	7.3 / 7.9
6 + 12	6000	12000	0	0	0	1175	5.2 / 5.8
	7133	14267	0	0	0	1800	8.4 / 9.3
6 + 15	6000	15000	0	0	0	1363	6.1 / 6.8
	7143	17857	0	0	0	2100	9.6 / 10.6
6 + 18	6000	18000	0	0	0	1550	6.9 / 7.8
	7125	21375	0	0	0	2400	10.7 / 12
6 + 24	6000	24000	0	0	0	2450	10.8 / 12.1
	7360	29440	0	0	0	3450	15.3 / 17
6 + 30	6000	30000	0	0	0	3352	14.7 / 16.4
	7500	37500	0	0	0	4499	19.8 / 22
6 + 36	6000	36000	0	0	0	4050	17.7 / 19.8
	6857	41143	0	0	0	5000	22 / 24.3
9 + 9	9000	9000	0	0	0	1175	5.2 / 5.8
	10700	10700	0	0	0	1800	8.4 / 9.3
9 + 12	9000	12000	0	0	0	1363	6.1 / 6.8
	10714	14286	0	0	0	2100	9.6 / 10.6
9 + 15	9000	15000	0	0	0	1550	6.9 / 7.8
	10688	17812	0	0	0	2400	10.7 / 12
9 + 18	9000	18000	0	0	0	2000	8.9 / 9.9
	10900	21800	0	0	0	2925	13 / 14.5
9 + 24	9000	24000	0	0	0	2900	12.8 / 14.2
	11155	29745	0	0	0	3975	17.6 / 19.5
9 + 30	9000	30000	0	0	0	3702	16.2 / 18.1
	10731	35769	0	0	0	4749	20.9 / 23.2
9 + 36	8400	33600	0	0	0	3750	16.5 / 18.3
	9600	38400	0	0	0	4685	20.7 / 25.5
12 + 12	12000	12000	0	0	0	1550	6.9 / 7.8
	14250	14250	0	0	0	2400	10.7 / 12
12 + 15	12000	15000	0	0	0	2000	8.9 / 9.9
	14533	18167	0	0	0	2925	13 / 14.5
12 + 18	12000	18000	0	0	0	2450	10.8 / 12.1
	14720	22080	0	0	0	3450	15.3 / 17
12 + 24	12000	24000	0	0	0	3352	14.7 / 16.4
	15000	30000	0	0	0	4499	19.8 / 22
12 + 30	12000	30000	0	0	0	4050	17.7 / 19.8
	13714	34286	0	0	0	5000	22 / 24.3
12 + 36	10500	31500	0	0	0	3452	15.2 / 16.9
	12000	36000	0	0	0	4370	19.3 / 21.5
15 + 15	15000	15000	0	0	0	2450	10.8 / 12.1
	18400	18400	0	0	0	3450	15.3 / 17

# MXZ-5C42NAHZ OPERATIONAL PERFORMANCE, contd.

Operational Performance for Indoor Unit Combinations (Unit A + Unit B + Unit C + Unit D + Unit E)	Cooling Capacity Range (Btu/h)					Power Usage Range (W)	Current (208/230V)
	Heating Capacity Range (Btu/h)						
	Unit A	Unit B	Unit C	Unit D	Unit E		
15 + 18	15000	18000	0	0	0	2900	12.8 / 14.2
	18591	22309	0	0	0	3975	17.6 / 19.5
15 + 24	15000	24000	0	0	0	3702	16.2 / 18.1
	17885	28615	0	0	0	4749	20.9 / 23.2
15 + 30	14000	28000	0	0	0	3750	16.5 / 18.3
	16000	32000	0	0	0	4685	20.7 / 25.5
15 + 36	12353	29647	0	0	0	3427	15.2 / 16.8
	14118	33882	0	0	0	4310	19.1 / 20
18 + 18	18000	18000	0	0	0	3352	14.7 / 16.4
	22500	22500	0	0	0	4499	19.8 / 22
18 + 24	18000	24000	0	0	0	4050	17.7 / 19.8
	20571	27429	0	0	0	5000	22 / 24.3
18 + 30	15750	26250	0	0	0	3452	15.2 / 16.9
	18000	30000	0	0	0	4370	19.3 / 21.5
18 + 36	14000	28000	0	0	0	3402	15.1 / 16.7
	16000	32000	0	0	0	4250	18.9 / 21
24 + 24	21000	21000	0	0	0	3452	15.2 / 16.9
	24000	24000	0	0	0	4370	19.3 / 21.5
24 + 30	18667	23333	0	0	0	3402	15.1 / 16.7
	21333	26667	0	0	0	4250	18.9 / 21
6 + 6 + 6	6000	6000	6000	0	0	1175	5.2 / 5.8
	7133	7133	7133	0	0	1800	8.4 / 9.3
6 + 6 + 9	6000	6000	9000	0	0	1363	6.1 / 6.8
	7143	7143	10714	0	0	2100	9.6 / 10.6
6 + 6 + 12	6000	6000	12000	0	0	1550	6.9 / 7.8
	7125	7125	14250	0	0	2400	10.7 / 12
6 + 6 + 15	6000	6000	15000	0	0	2000	8.9 / 9.9
	7267	7267	18167	0	0	2925	13 / 14.5
6 + 6 + 18	6000	6000	18000	0	0	2450	10.8 / 12.1
	7360	7360	22080	0	0	3450	15.3 / 17
6 + 6 + 24	6000	6000	24000	0	0	3352	14.7 / 16.4
	7500	7500	30000	0	0	4499	19.8 / 22
6 + 6 + 30	6000	6000	30000	0	0	4050	17.7 / 19.8
	6857	6857	34286	0	0	5000	22 / 24.3
6 + 6 + 36	5250	5250	31500	0	0	3452	15.2 / 16.9
	6000	6000	36000	0	0	4370	19.3 / 21.5
6 + 9 + 9	6000	9000	9000	0	0	1550	6.9 / 7.8
	7125	10688	10688	0	0	2400	10.7 / 12
6 + 9 + 12	6000	9000	12000	0	0	2000	8.9 / 9.9
	7267	10900	14533	0	0	2925	13 / 14.5
6 + 9 + 15	6000	9000	15000	0	0	2450	10.8 / 12.1
	7360	11040	18400	0	0	3450	15.3 / 17
6 + 9 + 18	6000	9000	18000	0	0	2900	12.8 / 14.2
	7436	11155	22309	0	0	3975	17.6 / 19.5
6 + 9 + 24	6000	9000	24000	0	0	3702	16.2 / 18.1
	7154	10731	28615	0	0	4749	20.9 / 23.2
6 + 9 + 30	5600	8400	28000	0	0	3750	16.5 / 18.3
	6400	9600	32000	0	0	4685	20.7 / 25.5
6 + 9 + 36	4941	7412	29647	0	0	3427	15.2 / 16.8
	5647	8471	33882	0	0	4310	19.1 / 20
6 + 12 + 12	6000	12000	12000	0	0	2450	10.8 / 12.1
	7360	14720	14720	0	0	3450	15.3 / 17
6 + 12 + 15	6000	12000	15000	0	0	2900	12.8 / 14.2
	7436	14873	18591	0	0	3975	17.6 / 19.5
6 + 12 + 18	6000	12000	18000	0	0	3352	14.7 / 16.4
	7500	15000	22500	0	0	4499	19.8 / 22
6 + 12 + 24	6000	12000	24000	0	0	4050	17.7 / 19.8
	6857	13714	27429	0	0	5000	22 / 24.3
6 + 12 + 30	5250	10500	26250	0	0	3452	15.2 / 16.9
	6000	12000	30000	0	0	4370	19.3 / 21.5

# MXZ-5C42NAHZ OPERATIONAL PERFORMANCE, contd.

Operational Performance for Indoor Unit Combinations (Unit A + Unit B + Unit C+ Unit D + Unit E)	Cooling Capacity Range (Btu/h)					Power Usage Range (W)	Current (208/230V)
	Heating Capacity Range (Btu/h)						
	Unit A	Unit B	Unit C	Unit D	Unit E		
6 + 12 + 36	4667	9333	28000	0	0	3402	15.1 / 16.7
	5333	10667	32000	0	0	4250	18.9 / 21
6 + 15 + 15	6000	15000	15000	0	0	3352	14.7 / 16.4
	7500	18750	18750	0	0	4499	19.8 / 22
6 + 15 + 18	6000	15000	18000	0	0	3702	16.2 / 18.1
	7154	17885	21462	0	0	4749	20.9 / 23.2
6 + 15 + 24	5600	14000	22400	0	0	3750	16.5 / 18.3
	6400	16000	25600	0	0	4685	20.7 / 25.5
6 + 15 + 30	4941	12353	24706	0	0	3427	15.2 / 16.8
	5647	14118	28235	0	0	4310	19.1 / 20
6 + 18 + 18	6000	18000	18000	0	0	4050	17.7 / 19.8
	6857	20571	20571	0	0	5000	22 / 24.3
6 + 18 + 24	5250	15750	21000	0	0	3452	15.2 / 16.9
	6000	18000	24000	0	0	4370	19.3 / 21.5
6 + 18 + 30	4667	14000	23333	0	0	3402	15.1 / 16.7
	5333	16000	26667	0	0	4250	18.9 / 21
6 + 24 + 24	4667	18667	18667	0	0	3402	15.1 / 16.7
	5333	21333	21333	0	0	4250	18.9 / 21
9 + 9 + 9	9000	9000	9000	0	0	2000	8.9 / 9.9
	10900	10900	10900	0	0	2925	13 / 14.5
9 + 9 + 12	9000	9000	12000	0	0	2450	10.8 / 12.1
	11040	11040	14720	0	0	3450	15.3 / 17
9 + 9 + 15	9000	9000	15000	0	0	2900	12.8 / 14.2
	11155	11155	18591	0	0	3975	17.6 / 19.5
9 + 9 + 18	9000	9000	18000	0	0	3352	14.7 / 16.4
	11250	11250	22500	0	0	4499	19.8 / 22
9 + 9 + 24	9000	9000	24000	0	0	4050	17.7 / 19.8
	10286	10286	27429	0	0	5000	22 / 24.3
9 + 9 + 30	7875	7875	26250	0	0	3452	15.2 / 16.9
	9000	9000	30000	0	0	4370	19.3 / 21.5
9 + 9 + 36	7000	7000	28000	0	0	3402	15.1 / 16.7
	8000	8000	32000	0	0	4250	18.9 / 21
9 + 12 + 12	9000	12000	12000	0	0	2900	12.8 / 14.2
	11155	14873	14873	0	0	3975	17.6 / 19.5
9 + 12 + 15	9000	12000	15000	0	0	3352	14.7 / 16.4
	11250	15000	18750	0	0	4499	19.8 / 22
9 + 12 + 18	9000	12000	18000	0	0	3702	16.2 / 18.1
	10731	14308	21462	0	0	4749	20.9 / 23.2
9 + 12 + 24	8400	11200	22400	0	0	3750	16.5 / 18.3
	9600	12800	25600	0	0	4685	20.7 / 25.5
9 + 12 + 30	7412	9882	24706	0	0	3427	15.2 / 16.8
	8471	11294	28235	0	0	4310	19.1 / 20
9 + 15 + 15	9000	15000	15000	0	0	3702	16.2 / 18.1
	10731	17885	17885	0	0	4749	20.9 / 23.2
9 + 15 + 18	9000	15000	18000	0	0	4050	17.7 / 19.8
	10286	17143	20571	0	0	5000	22 / 24.3
9 + 15 + 24	7875	13125	21000	0	0	3452	15.2 / 16.9
	9000	15000	24000	0	0	4370	19.3 / 21.5
9 + 15 + 30	7000	11667	23333	0	0	3402	15.1 / 16.7
	8000	13333	26667	0	0	4250	18.9 / 21
9 + 18 + 18	8400	16800	16800	0	0	3750	16.5 / 18.3
	9600	19200	19200	0	0	4685	20.7 / 25.5
9 + 18 + 24	7412	14824	19765	0	0	3427	15.2 / 16.8
	8471	16941	22588	0	0	4310	19.1 / 20
12 + 12 + 12	12000	12000	12000	0	0	3352	14.7 / 16.4
	15000	15000	15000	0	0	4499	19.8 / 22
12 + 12 + 15	12000	12000	15000	0	0	3702	16.2 / 18.1
	14308	14308	17885	0	0	4749	20.9 / 23.2
12 + 12 + 18	12000	12000	18000	0	0	4050	17.7 / 19.8
	13714	13714	20571	0	0	5000	22 / 24.3

# MXZ-5C42NAHZ OPERATIONAL PERFORMANCE, contd.

Operational Performance for Indoor Unit Combinations (Unit A + Unit B + Unit C + Unit D + Unit E)	Cooling Capacity Range (Btu/h)					Power Usage Range (W)	Current (208/230V)
	Heating Capacity Range (Btu/h)						
	Unit A	Unit B	Unit C	Unit D	Unit E		
12 + 12 + 24	10500	10500	21000	0	0	3452	15.2 / 16.9
	12000	12000	24000	0	0	4370	19.3 / 21.5
12 + 12 + 30	9333	9333	23333	0	0	3402	15.1 / 16.7
	10667	10667	26667	0	0	4250	18.9 / 21
12 + 15 + 15	12000	15000	15000	0	0	4050	17.7 / 19.8
	13714	17143	17143	0	0	5000	22 / 24.3
12 + 15 + 18	11200	14000	16800	0	0	3750	16.5 / 18.3
	12800	16000	19200	0	0	4685	20.7 / 25.5
12 + 15 + 24	9882	12353	19765	0	0	3427	15.2 / 16.8
	11294	14118	22588	0	0	4310	19.1 / 20
12 + 18 + 18	10500	15750	15750	0	0	3452	15.2 / 16.9
	12000	18000	18000	0	0	4370	19.3 / 21.5
12 + 18 + 24	9333	14000	18667	0	0	3402	15.1 / 16.7
	10667	16000	21333	0	0	4250	18.9 / 21
15 + 15 + 15	14000	14000	14000	0	0	3750	16.5 / 18.3
	16000	16000	16000	0	0	4685	20.7 / 25.5
15 + 15 + 18	13125	13125	15750	0	0	3452	15.2 / 16.9
	15000	15000	18000	0	0	4370	19.3 / 21.5
15 + 15 + 24	11667	11667	18667	0	0	3402	15.1 / 16.7
	13333	13333	21333	0	0	4250	18.9 / 21
15 + 18 + 18	12353	14824	14824	0	0	3427	15.2 / 16.8
	14118	16941	16941	0	0	4310	19.1 / 20
18 + 18 + 18	14000	14000	14000	0	0	3402	15.1 / 16.7
	16000	16000	16000	0	0	4250	18.9 / 21
6 + 6 + 6 + 6	6000	6000	6000	6000	0	1550	6.9 / 7.8
	7125	7125	7125	7125	0	2400	10.7 / 12
6 + 6 + 6 + 9	6000	6000	6000	9000	0	2000	8.9 / 9.9
	7267	7267	7267	10900	0	2925	13 / 14.5
6 + 6 + 6 + 12	6000	6000	6000	12000	0	2450	10.8 / 12.1
	7360	7360	7360	14720	0	3450	15.3 / 17
6 + 6 + 6 + 15	6000	6000	6000	15000	0	2900	12.8 / 14.2
	7436	7436	7436	18591	0	3975	17.6 / 19.5
6 + 6 + 6 + 18	6000	6000	6000	18000	0	3352	14.7 / 16.4
	7500	7500	7500	22500	0	4499	19.8 / 22
6 + 6 + 6 + 24	6000	6000	6000	24000	0	4050	17.7 / 19.8
	6857	6857	6857	27429	0	5000	22 / 24.3
6 + 6 + 6 + 30	5250	5250	5250	26250	0	3452	15.2 / 16.9
	6000	6000	6000	30000	0	4370	19.3 / 21.5
6 + 6 + 6 + 36	4667	4667	4667	28000	0	3402	15.1 / 16.7
	5333	5333	5333	32000	0	4250	18.9 / 21
6 + 6 + 9 + 9	6000	6000	9000	9000	0	2450	10.8 / 12.1
	7360	7360	11040	11040	0	3450	15.3 / 17
6 + 6 + 9 + 12	6000	6000	9000	12000	0	2900	12.8 / 14.2
	7436	7436	11155	14873	0	3975	17.6 / 19.5
6 + 6 + 9 + 15	6000	6000	9000	15000	0	3352	14.7 / 16.4
	7500	7500	11250	18750	0	4499	19.8 / 22
6 + 6 + 9 + 18	6000	6000	9000	18000	0	3702	16.2 / 18.1
	7154	7154	10731	21462	0	4749	20.9 / 23.2
6 + 6 + 9 + 24	5600	5600	8400	22400	0	3750	16.5 / 18.3
	6400	6400	9600	25600	0	4685	20.7 / 25.5
6 + 6 + 9 + 30	4941	4941	7412	24706	0	3427	15.2 / 16.8
	5647	5647	8471	28235	0	4310	19.1 / 20
6 + 6 + 12 + 12	6000	6000	12000	12000	0	3352	14.7 / 16.4
	7500	7500	15000	15000	0	4499	19.8 / 22
6 + 6 + 12 + 15	6000	6000	12000	15000	0	3702	16.2 / 18.1
	7154	7154	14308	17885	0	4749	20.9 / 23.2
6 + 6 + 12 + 18	6000	6000	12000	18000	0	4050	17.7 / 19.8
	6857	6857	13714	20571	0	5000	22 / 24.3
6 + 6 + 12 + 24	5250	5250	10500	21000	0	3452	15.2 / 16.9
	6000	6000	12000	24000	0	4370	19.3 / 21.5



# MXZ-5C42NAHZ OPERATIONAL PERFORMANCE, contd.

Operational Performance for Indoor Unit Combinations (Unit A + Unit B + Unit C+ Unit D + Unit E)	Cooling Capacity Range (Btu/h)					Power Usage Range (W)	Current (208/230V)
	Heating Capacity Range (Btu/h)						
	Unit A	Unit B	Unit C	Unit D	Unit E		
6 + 6 + 12 + 30	4667	4667	9333	23333	0	3402	15.1 / 16.7
	5333	5333	10667	26667	0	4250	18.9 / 21
6 + 6 + 15 + 15	6000	6000	15000	15000	0	4050	17.7 / 19.8
	6857	6857	17143	17143	0	5000	22 / 24.3
6 + 6 + 15 + 18	5600	5600	14000	16800	0	3750	16.5 / 18.3
	6400	6400	16000	19200	0	4685	20.7 / 25.5
6 + 6 + 15 + 24	4941	4941	12353	19765	0	3427	15.2 / 16.8
	5647	5647	14118	22588	0	4310	19.1 / 20
6 + 6 + 18 + 18	5250	5250	15750	15750	0	3452	15.2 / 16.9
	6000	6000	18000	18000	0	4370	19.3 / 21.5
6 + 6 + 18 + 24	4667	4667	14000	18667	0	3402	15.1 / 16.7
	5333	5333	16000	21333	0	4250	18.9 / 21
6 + 9 + 9 + 9	6000	9000	9000	9000	0	2900	12.8 / 14.2
	7436	11155	11155	11155	0	3975	17.6 / 19.5
6 + 9 + 9 + 12	6000	9000	9000	12000	0	3352	14.7 / 16.4
	7500	11250	11250	15000	0	4499	19.8 / 22
6 + 9 + 9 + 15	6000	9000	9000	15000	0	3702	16.2 / 18.1
	7154	10731	10731	17885	0	4749	20.9 / 23.2
6 + 9 + 9 + 18	6000	9000	9000	18000	0	4050	17.7 / 19.8
	6857	10286	10286	20571	0	5000	22 / 24.3
6 + 9 + 9 + 24	5250	7875	7875	21000	0	3452	15.2 / 16.9
	6000	9000	9000	24000	0	4370	19.3 / 21.5
6 + 9 + 12 + 12	6000	9000	12000	12000	0	3702	16.2 / 18.1
	7154	10731	14308	14308	0	4749	20.9 / 23.2
6 + 9 + 12 + 15	6000	9000	12000	15000	0	4050	17.7 / 19.8
	6857	10286	13714	17143	0	5000	22 / 24.3
6 + 9 + 12 + 18	5600	8400	11200	16800	0	3750	16.5 / 18.3
	6400	9600	12800	19200	0	4685	20.7 / 25.5
6 + 9 + 12 + 24	4941	7412	9882	19765	0	3427	15.2 / 16.8
	5647	8471	11294	22588	0	4310	19.1 / 20
6 + 9 + 15 + 15	5600	8400	14000	14000	0	3750	16.5 / 18.3
	6400	9600	16000	16000	0	4685	20.7 / 25.5
6 + 9 + 15 + 18	5250	7875	13125	15750	0	3452	15.2 / 16.9
	6000	9000	15000	18000	0	4370	19.3 / 21.5
6 + 9 + 15 + 24	4667	7000	11667	18667	0	3402	15.1 / 16.7
	5333	8000	13333	21333	0	4250	18.9 / 21
6 + 9 + 18 + 18	4941	7412	14824	14824	0	3427	15.2 / 16.8
	5647	8471	16941	16941	0	4310	19.1 / 20
6 + 12 + 12 + 12	6000	12000	12000	12000	0	4050	17.7 / 19.8
	6857	13714	13714	13714	0	5000	22 / 24.3
6 + 12 + 12 + 15	5600	11200	11200	14000	0	3750	16.5 / 18.3
	6400	12800	12800	16000	0	4685	20.7 / 25.5
6 + 12 + 12 + 18	5250	10500	10500	15750	0	3452	15.2 / 16.9
	6000	12000	12000	18000	0	4370	19.3 / 21.5
6 + 12 + 12 + 24	4667	9333	9333	18667	0	3402	15.1 / 16.7
	5333	10667	10667	21333	0	4250	18.9 / 21
6 + 12 + 15 + 15	5250	10500	13125	13125	0	3452	15.2 / 16.9
	6000	12000	15000	15000	0	4370	19.3 / 21.5
6 + 12 + 15 + 18	4941	9882	12353	14824	0	3427	15.2 / 16.8
	5647	11294	14118	16941	0	4310	19.1 / 20
6 + 12 + 18 + 18	4667	9333	14000	14000	0	3402	15.1 / 16.7
	5333	10667	16000	16000	0	4250	18.9 / 21
6 + 15 + 15 + 15	4941	12353	12353	12353	0	3427	15.2 / 16.8
	5647	14118	14118	14118	0	4310	19.1 / 20
6 + 15 + 15 + 18	4667	11667	11667	14000	0	3402	15.1 / 16.7
	5333	13333	13333	16000	0	4250	18.9 / 21
9 + 9 + 9 + 9	9000	9000	9000	9000	0	3352	14.7 / 16.4
	11250	11250	11250	11250	0	4499	19.8 / 22
9 + 9 + 9 + 12	9000	9000	9000	12000	0	3702	16.2 / 18.1
	10731	10731	10731	14308	0	4749	20.9 / 23.2

# MXZ-5C42NAHZ OPERATIONAL PERFORMANCE, contd.

Operational Performance for Indoor Unit Combinations (Unit A + Unit B + Unit C+ Unit D + Unit E)	Cooling Capacity Range (Btu/h)					Power Usage Range (W)	Current (208/230V)
	Heating Capacity Range (Btu/h)						
	Unit A	Unit B	Unit C	Unit D	Unit E		
9 + 9 + 9 + 15	9000	9000	9000	15000	0	4050	17.7 / 19.8
	10286	10286	10286	17143	0	5000	22 / 24.3
9 + 9 + 9 + 18	8400	8400	8400	16800	0	3750	16.5 / 18.3
	9600	9600	9600	19200	0	4685	20.7 / 25.5
9 + 9 + 9 + 24	7412	7412	7412	19765	0	3427	15.2 / 16.8
	8471	8471	8471	22588	0	4310	19.1 / 20
9 + 9 + 12 + 12	9000	9000	12000	12000	0	4050	17.7 / 19.8
	10286	10286	13714	13714	0	5000	22 / 24.3
9 + 9 + 12 + 15	8400	8400	11200	14000	0	3750	16.5 / 18.3
	9600	9600	12800	16000	0	4685	20.7 / 25.5
9 + 9 + 12 + 18	7875	7875	10500	15750	0	3452	15.2 / 16.9
	9000	9000	12000	18000	0	4370	19.3 / 21.5
9 + 9 + 12 + 24	7000	7000	9333	18667	0	3402	15.1 / 16.7
	8000	8000	10667	21333	0	4250	18.9 / 21
9 + 9 + 15 + 15	7875	7875	13125	13125	0	3452	15.2 / 16.9
	9000	9000	15000	15000	0	4370	19.3 / 21.5
9 + 9 + 15 + 18	7412	7412	12353	14824	0	3427	15.2 / 16.8
	8471	8471	14118	16941	0	4310	19.1 / 20
9 + 12 + 12 + 12	8400	11200	11200	11200	0	3750	16.5 / 18.3
	9600	12800	12800	12800	0	4685	20.7 / 25.5
9 + 12 + 12 + 15	7875	10500	10500	13125	0	3452	15.2 / 16.9
	9000	12000	12000	15000	0	4370	19.3 / 21.5
9 + 12 + 12 + 18	7412	9882	9882	14824	0	3427	15.2 / 16.8
	8471	11294	11294	16941	0	4310	19.1 / 20
9 + 12 + 15 + 15	7412	9882	12353	12353	0	3427	15.2 / 16.8
	8471	11294	14118	14118	0	4310	19.1 / 20
9 + 12 + 15 + 18	7000	9333	11667	14000	0	3402	15.1 / 16.7
	8000	10667	13333	16000	0	4250	18.9 / 21
9 + 15 + 15 + 15	7000	11667	11667	11667	0	3402	15.1 / 16.7
	8000	13333	13333	13333	0	4250	18.9 / 21
12 + 12 + 12 + 12	10500	10500	10500	10500	0	3452	15.2 / 16.9
	12000	12000	12000	12000	0	4370	19.3 / 21.5
12 + 12 + 12 + 15	9882	9882	9882	12353	0	3427	15.2 / 16.8
	11294	11294	11294	14118	0	4310	19.1 / 20
12 + 12 + 12 + 18	9333	9333	9333	14000	0	3402	15.1 / 16.7
	10667	10667	10667	16000	0	4250	18.9 / 21
12 + 12 + 15 + 15	9333	9333	11667	11667	0	3402	15.1 / 16.7
	10667	10667	13333	13333	0	4250	18.9 / 21
6 + 6 + 6 + 6 + 6	6000	6000	6000	6000	6000	2450	10.8 / 12.1
	7360	7360	7360	7360	7360	3450	15.3 / 17
6 + 6 + 6 + 6 + 9	6000	6000	6000	6000	9000	2900	12.8 / 14.2
	7436	7436	7436	7436	11155	3975	17.6 / 19.5
6 + 6 + 6 + 6 + 12	6000	6000	6000	6000	12000	3352	14.7 / 16.4
	7500	7500	7500	7500	15000	4499	19.8 / 22
6 + 6 + 6 + 6 + 15	6000	6000	6000	6000	15000	3702	16.2 / 18.1
	7154	7154	7154	7154	17885	4749	20.9 / 23.2
6 + 6 + 6 + 6 + 18	6000	6000	6000	6000	18000	4050	17.7 / 19.8
	6857	6857	6857	6857	20571	5000	22 / 24.3
6 + 6 + 6 + 6 + 24	5250	5250	5250	5250	21000	3452	15.2 / 16.9
	6000	6000	6000	6000	24000	4370	19.3 / 21.5
6 + 6 + 6 + 6 + 30	4667	4667	4667	4667	23333	3402	15.1 / 16.7
	5333	5333	5333	5333	26667	4250	18.9 / 21
6 + 6 + 6 + 9 + 9	6000	6000	6000	9000	9000	3352	14.7 / 16.4
	7500	7500	7500	11250	11250	4499	19.8 / 22
6 + 6 + 6 + 9 + 12	6000	6000	6000	9000	12000	3702	16.2 / 18.1
	7154	7154	7154	10731	14308	4749	20.9 / 23.2
6 + 6 + 6 + 9 + 15	6000	6000	6000	9000	15000	4050	17.7 / 19.8
	6857	6857	6857	10286	17143	5000	22 / 24.3
6 + 6 + 6 + 9 + 18	5600	5600	5600	8400	16800	3750	16.5 / 18.3
	6400	6400	6400	9600	19200	4685	20.7 / 25.5

# MXZ-5C42NAHZ OPERATIONAL PERFORMANCE, contd.

Operational Performance for Indoor Unit Combinations (Unit A + Unit B + Unit C+ Unit D + Unit E)	Cooling Capacity Range (Btu/h)					Power Usage Range (W)	Current (208/230V)
	Heating Capacity Range (Btu/h)						
	Unit A	Unit B	Unit C	Unit D	Unit E		
6 + 6 + 6 + 9 + 24	4941	4941	4941	7412	19765	3427	15.2 / 16.8
	5647	5647	5647	8471	22588	4310	19.1 / 20
6 + 6 + 6 + 12 + 12	6000	6000	6000	12000	12000	4050	17.7 / 19.8
	6857	6857	6857	13714	13714	5000	22 / 24.3
6 + 6 + 6 + 12 + 15	5600	5600	5600	11200	14000	3750	16.5 / 18.3
	6400	6400	6400	12800	16000	4685	20.7 / 25.5
6 + 6 + 6 + 12 + 18	5250	5250	5250	10500	15750	3452	15.2 / 16.9
	6000	6000	6000	12000	18000	4370	19.3 / 21.5
6 + 6 + 6 + 12 + 24	4667	4667	4667	9333	18667	3402	15.1 / 16.7
	5333	5333	5333	10667	21333	4250	18.9 / 21
6 + 6 + 6 + 15 + 15	5250	5250	5250	13125	13125	3452	15.2 / 16.9
	6000	6000	6000	15000	15000	4370	19.3 / 21.5
6 + 6 + 6 + 15 + 18	4941	4941	4941	12353	14824	3427	15.2 / 16.8
	5647	5647	5647	14118	16941	4310	19.1 / 20
6 + 6 + 6 + 18 + 18	4667	4667	4667	14000	14000	3402	15.1 / 16.7
	5333	5333	5333	16000	16000	4250	18.9 / 21
6 + 6 + 9 + 9 + 9	6000	6000	9000	9000	9000	3702	16.2 / 18.1
	7154	7154	10731	10731	10731	4749	20.9 / 23.2
6 + 6 + 9 + 9 + 12	6000	6000	9000	9000	12000	4050	17.7 / 19.8
	6857	6857	10286	10286	13714	5000	22 / 24.3
6 + 6 + 9 + 9 + 15	5600	5600	8400	8400	14000	3750	16.5 / 18.3
	6400	6400	9600	9600	16000	4685	20.7 / 25.5
6 + 6 + 9 + 9 + 18	5250	5250	7875	7875	15750	3452	15.2 / 16.9
	6000	6000	9000	9000	18000	4370	19.3 / 21.5
6 + 6 + 9 + 9 + 24	4667	4667	7000	7000	18667	3402	15.1 / 16.7
	5333	5333	8000	8000	21333	4250	18.9 / 21
6 + 6 + 9 + 12 + 12	5600	5600	8400	11200	11200	3750	16.5 / 18.3
	6400	6400	9600	12800	12800	4685	20.7 / 25.5
6 + 6 + 9 + 12 + 15	5250	5250	7875	10500	13125	3452	15.2 / 16.9
	6000	6000	9000	12000	15000	4370	19.3 / 21.5
6 + 6 + 9 + 12 + 18	4941	4941	7412	9882	14824	3427	15.2 / 16.8
	5647	5647	8471	11294	16941	4310	19.1 / 20
6 + 6 + 9 + 15 + 15	4941	4941	7412	12353	12353	3427	15.2 / 16.8
	5647	5647	8471	14118	14118	4310	19.1 / 20
6 + 6 + 9 + 15 + 18	4667	4667	7000	11667	14000	3402	15.1 / 16.7
	5333	5333	8000	13333	16000	4250	18.9 / 21
6 + 6 + 12 + 12 + 12	5250	5250	10500	10500	10500	3452	15.2 / 16.9
	6000	6000	12000	12000	12000	4370	19.3 / 21.5
6 + 6 + 12 + 12 + 15	4941	4941	9882	9882	12353	3427	15.2 / 16.8
	5647	5647	11294	11294	14118	4310	19.1 / 20
6 + 6 + 12 + 12 + 18	4667	4667	9333	9333	14000	3402	15.1 / 16.7
	5333	5333	10667	10667	16000	4250	18.9 / 21
6 + 6 + 12 + 15 + 15	4667	4667	9333	11667	11667	3402	15.1 / 16.7
	5333	5333	10667	13333	13333	4250	18.9 / 21
6 + 9 + 9 + 9 + 9	6000	9000	9000	9000	9000	4050	17.7 / 19.8
	6857	10286	10286	10286	10286	5000	22 / 24.3
6 + 9 + 9 + 9 + 12	5600	8400	8400	8400	11200	3750	16.5 / 18.3
	6400	9600	9600	9600	12800	4685	20.7 / 25.5
6 + 9 + 9 + 9 + 15	5250	7875	7875	7875	13125	3452	15.2 / 16.9
	6000	9000	9000	9000	15000	4370	19.3 / 21.5
6 + 9 + 9 + 9 + 18	4941	7412	7412	7412	14824	3427	15.2 / 16.8
	5647	8471	8471	8471	16941	4310	19.1 / 20
6 + 9 + 9 + 12 + 12	5250	7875	7875	10500	10500	3452	15.2 / 16.9
	6000	9000	9000	12000	12000	4370	19.3 / 21.5
6 + 9 + 9 + 12 + 15	4941	7412	7412	9882	12353	3427	15.2 / 16.8
	5647	8471	8471	11294	14118	4310	19.1 / 20
6 + 9 + 9 + 12 + 18	4667	7000	7000	9333	14000	3402	15.1 / 16.7
	5333	8000	8000	10667	16000	4250	18.9 / 21
6 + 9 + 9 + 15 + 15	4667	7000	7000	11667	11667	3402	15.1 / 16.7
	5333	8000	8000	13333	13333	4250	18.9 / 21

# MXZ-5C42NAHZ OPERATIONAL PERFORMANCE, contd.

Operational Performance for Indoor Unit Combinations (Unit A + Unit B + Unit C+ Unit D + Unit E)	Cooling Capacity Range (Btu/h)					Power Usage Range (W)	Current (208/230V)
	Heating Capacity Range (Btu/h)						
	Unit A	Unit B	Unit C	Unit D	Unit E		
6 + 9 + 12 + 12 + 12	4941	7412	9882	9882	9882	3427	15.2 / 16.8
	5647	8471	11294	11294	11294	4310	19.1 / 20
6 + 9 + 12 + 12 + 15	4667	7000	9333	9333	11667	3402	15.1 / 16.7
	5333	8000	10667	10667	13333	4250	18.9 / 21
6 + 12 + 12 + 12 + 12	4667	9333	9333	9333	9333	3402	15.1 / 16.7
	5333	10667	10667	10667	10667	4250	18.9 / 21
9 + 9 + 9 + 9 + 9	8400	8400	8400	8400	8400	3750	16.5 / 18.3
	9600	9600	9600	9600	9600	4685	20.7 / 25.5
9 + 9 + 9 + 9 + 12	7875	7875	7875	7875	10500	3452	15.2 / 16.9
	9000	9000	9000	9000	12000	4370	19.3 / 21.5
9 + 9 + 9 + 9 + 15	7412	7412	7412	7412	12353	3427	15.2 / 16.8
	8471	8471	8471	8471	14118	4310	19.1 / 20
9 + 9 + 9 + 9 + 18	7000	7000	7000	7000	14000	3402	15.1 / 16.7
	8000	8000	8000	8000	16000	4250	18.9 / 21
9 + 9 + 9 + 12 + 12	7412	7412	7412	9882	9882	3427	15.2 / 16.8
	8471	8471	8471	11294	11294	4310	19.1 / 20
9 + 9 + 9 + 12 + 15	7000	7000	7000	9333	11667	3402	15.1 / 16.7
	8000	8000	8000	10667	13333	4250	18.9 / 21
9 + 9 + 12 + 12 + 12	7000	7000	9333	9333	9333	3402	15.1 / 16.7
	8000	8000	10667	10667	10667	4250	18.9 / 21

# DIMENSIONS: PAC-MKA30BC AND PAC-MKA50BC BRANCH BOXES

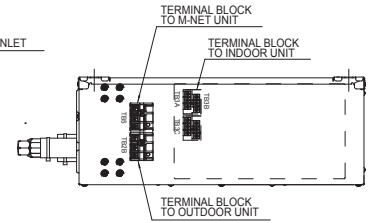
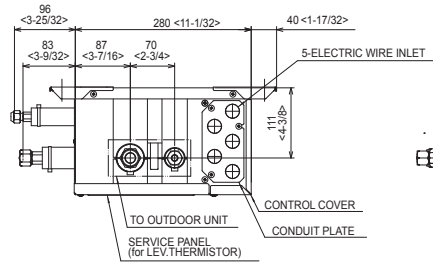
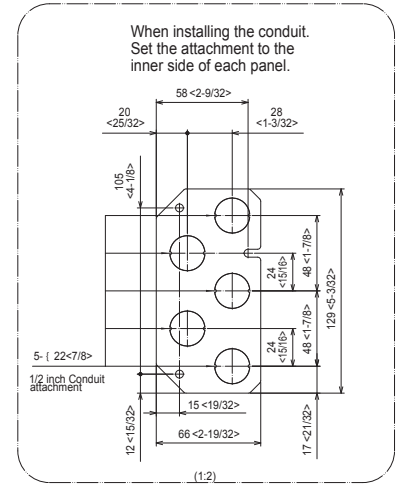
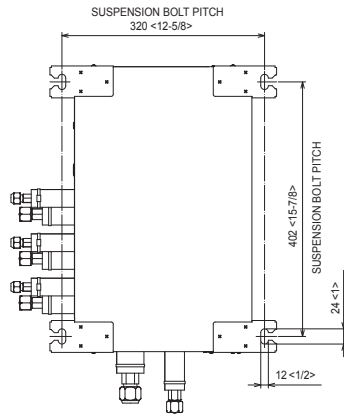
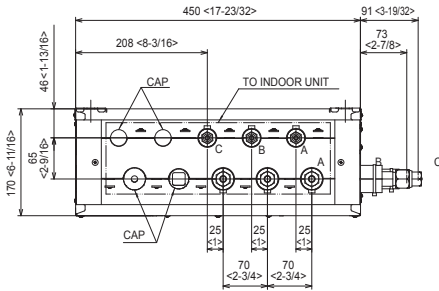
## PAC-MKA30BC

Unit: mm <in>

SUSPENSION BOLT : W3/8(M10)

REFRIGERANT PIPE FLARED CONNECTION

	A	B	C		TO OUTDOOR UNIT
LIQUID PIPE	1/4F	1/4F	1/4F		3/8F
GAS PIPE	3/8F	3/8F	3/8F		5/8F



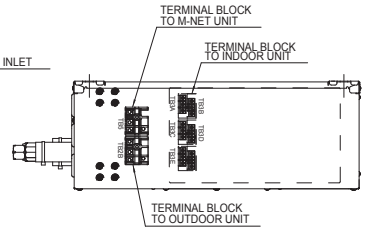
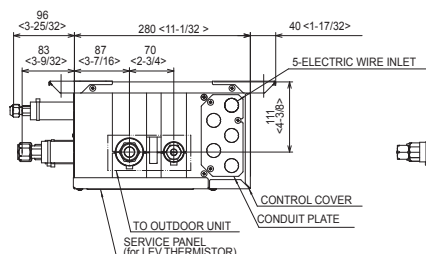
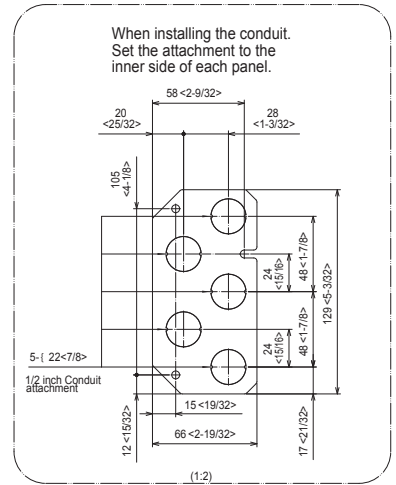
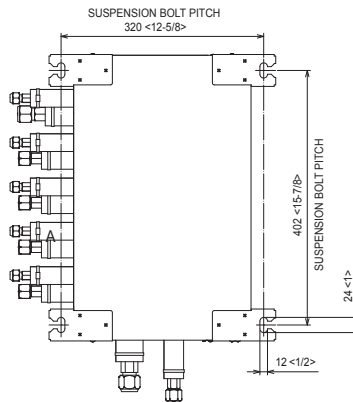
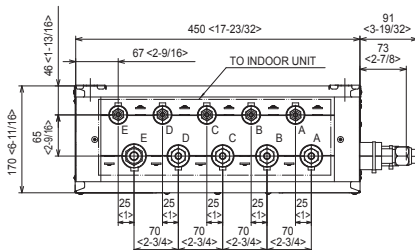
## PAC-MKA50BC

Unit: mm <in>

SUSPENSION BOLT : W3/8(M10)

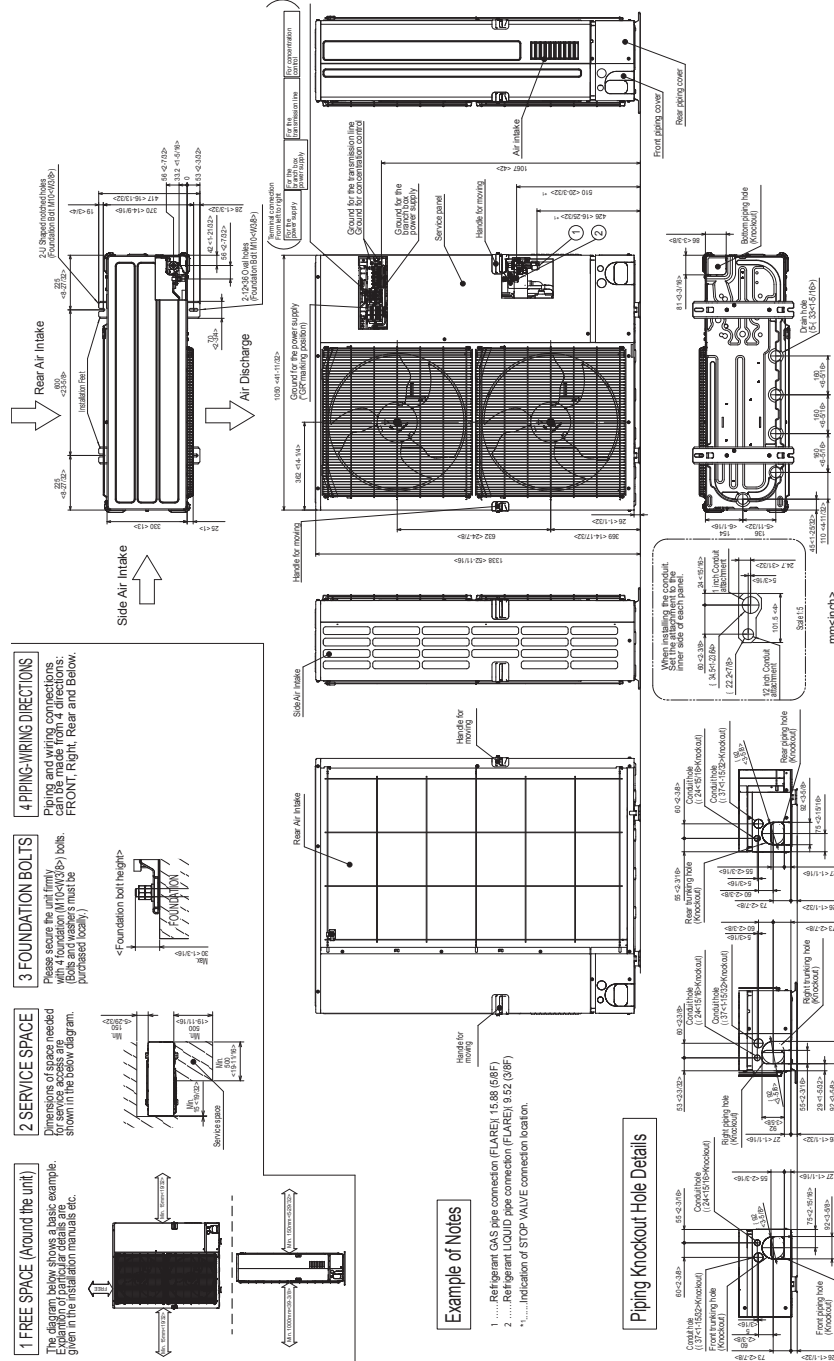
REFRIGERANT PIPE FLARED CONNECTION

	A	B	C	D	E	TO OUTDOOR UNIT
LIQUID PIPE	1/4F	1/4F	1/4F	1/4F	1/4F	3/8F
GAS PIPE	3/8F	3/8F	3/8F	3/8F	1/2F	5/8F



# DIMENSIONS: MXZ-5C42NAHZ

Unit: mm <in>



COOLING & HEATING

1340 Satellite Boulevard, Suwanee, GA 30024  
Toll Free: 800-433-4822 www.mehvac.com

