

Tc FLOW LINE DATA:

SUBCATCHMENT 1.1			
SEGMENT	LENGTH	SLOPE	FLOW TYPE
A-B	150'	0.080	SHEET FLOW
B-C	60'	0.080	SHEET FLOW
C-D	76'	0.060	SHALLOW CONCENTRATED FLOW
D-E	193'	0.047	TRAP FLOW

SUBCATCHMENT 1.2			
SEGMENT	LENGTH	SLOPE	FLOW TYPE
A-B	150'	0.050	SHEET FLOW
B-C	266'	0.065	SHALLOW CONCENTRATED FLOW

SUBCATCHMENT 2.1			
SEGMENT	LENGTH	SLOPE	FLOW TYPE
A-B	150'	0.080	SHEET FLOW
B-C	132'	0.023	SHALLOW CONCENTRATED FLOW

SUBCATCHMENT 2.2			
SEGMENT	LENGTH	SLOPE	FLOW TYPE
A-B	50'	0.044	SHEET FLOW
B-C	281'	0.034	TRAP FLOW
C-D	127'	0.008	SHALLOW CONCENTRATED FLOW

SUBCATCHMENT 2.3			
SEGMENT	LENGTH	SLOPE	FLOW TYPE
A-B	30'	0.133	SHEET FLOW
B-C	90'	0.033	SHEET FLOW
C-D	40'	0.075	SHALLOW CONCENTRATED FLOW

SUBCATCHMENT 3.1			
SEGMENT	LENGTH	SLOPE	FLOW TYPE
A-B	150'	0.134	SHEET FLOW
B-C	200'	0.134	SHALLOW CONCENTRATED FLOW
C-D	300'	0.023	TRAP FLOW

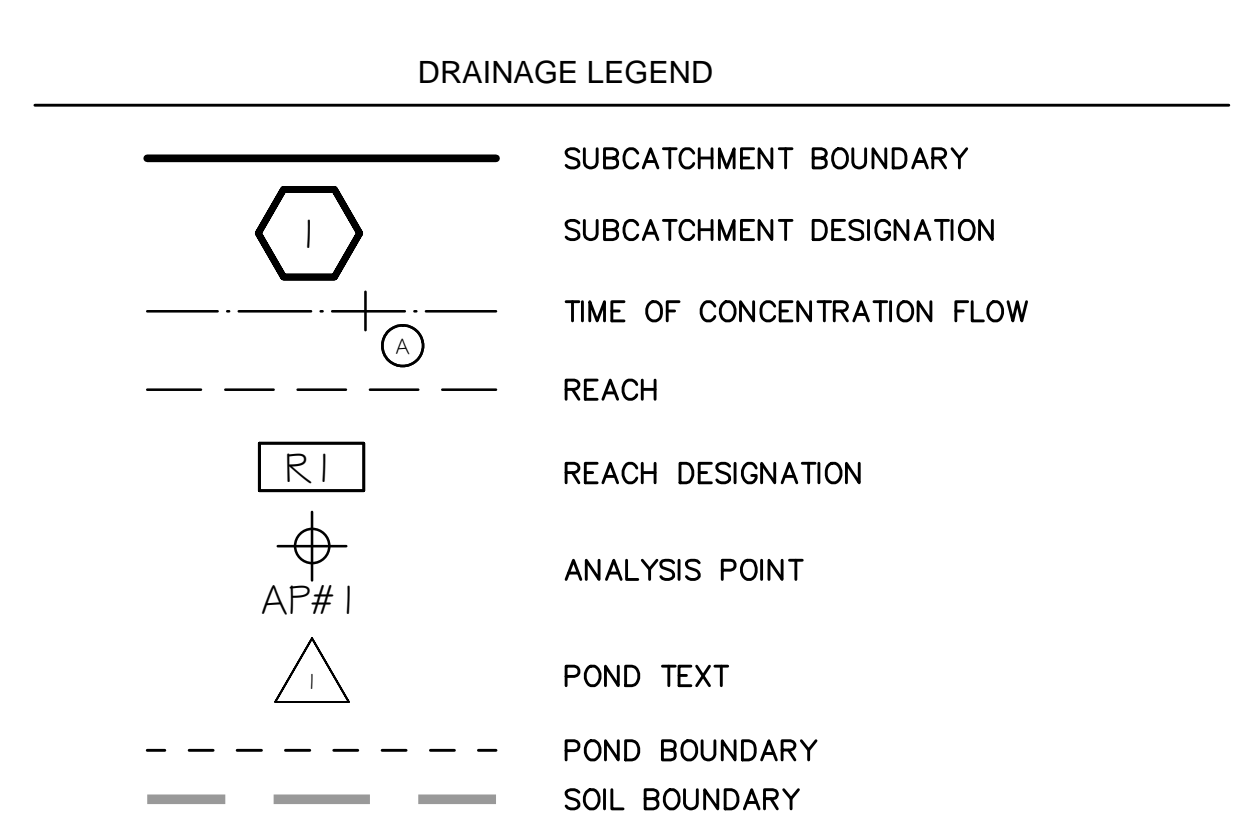
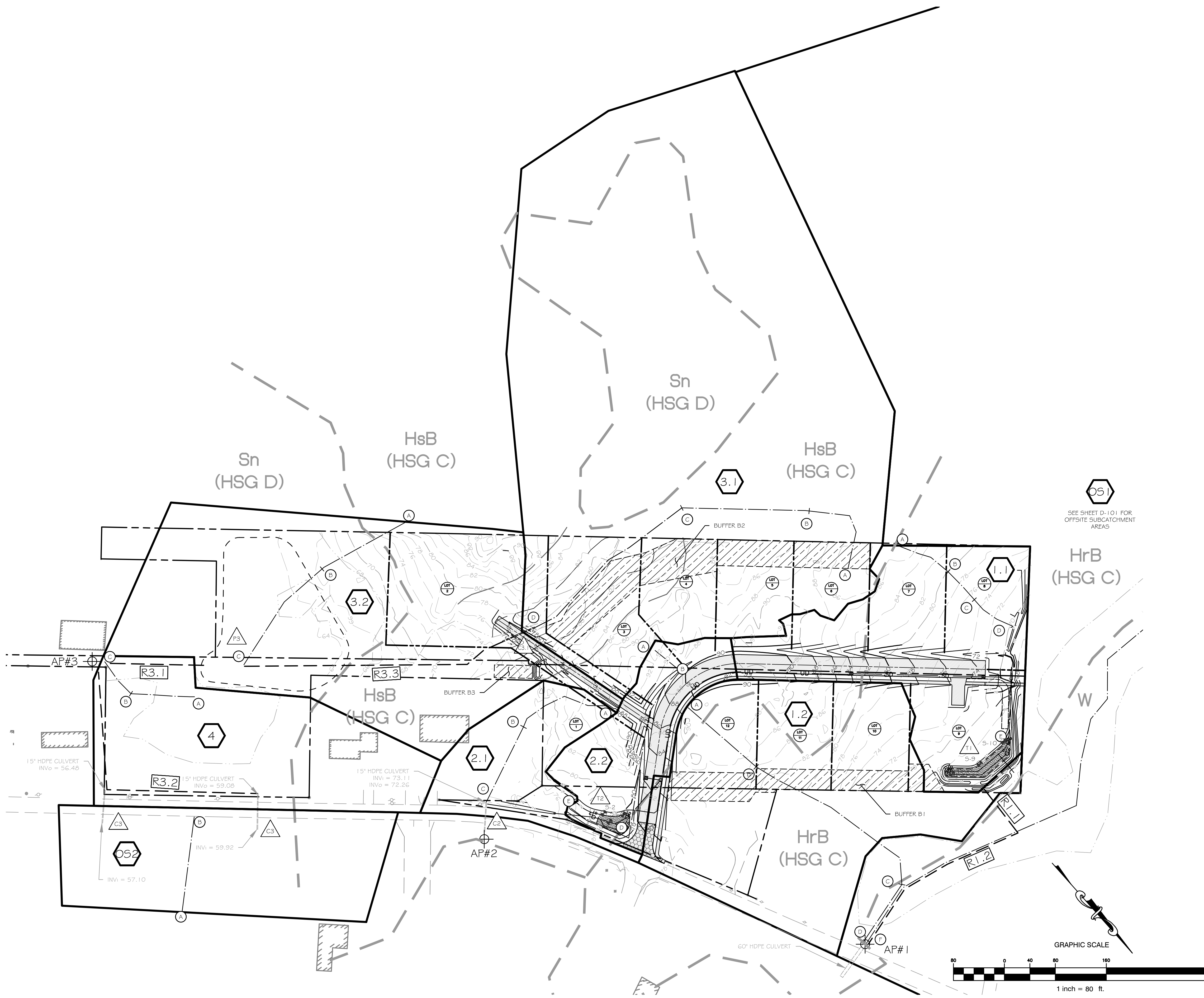
  

SUBCATCHMENT 3.2			
SEGMENT	LENGTH	SLOPE	FLOW TYPE
A-B	150'	0.047	SHEET FLOW
B-C	159'	0.047	SHALLOW CONCENTRATED FLOW
C-D	133'	0.110	SHALLOW CONCENTRATED FLOW
D-E	62'	0.065	SHALLOW CONCENTRATED FLOW
D-F	329'	0.015	PARABOLIC CHANNEL FLOW

SOIL LEGEND:

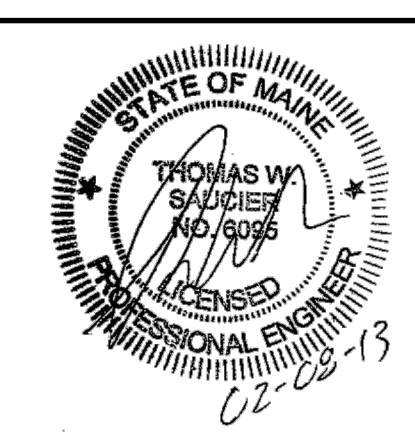
SYMBOL	DESCRIPTION	HYDROLOGIC SOIL GROUP
HsB	HOLLIS, VERY ROCKY, FINE SANDY LOAM, 3% TO 8% SLOPES	C/D
HrB	HOLLIS, FINE SANDY LOAM, 3% TO 8% SLOPES	C/D
Sn	SCANTIC SILT LOAM	D

SOURCE: SOIL SURVEY STAFF, NATURAL RESOURCES CONSERVATION SERVICE, UNITED STATES DEPARTMENT OF AGRICULTURE, WEB SOIL SURVEY, AVAILABLE ONLINE AT [HTTP://WEBSOILSURVEY.NRCS.USDA.GOV/](http://websoilsurvey.nrcs.usda.gov/), ACCESSED 11/8/12.



Drawing Name: \\h:\20\Projects\201 - Ledgerwood Drive Subdivision\201 - Base\Plan Data / Title, Feb. 8, 13 / 2:58 PM

REV.	DATE	STATUS	BY	CHKD.	APPD.	REV.	DATE	STATUS	BY	CHKD.	APPD.
C	2/8/13	ISSUED TO THE CITY OF PORTLAND FOR FINAL APPROVAL									
B	1/9/13	ISSUED TO THE TOWN OF FALMOUTH FOR PRELIMINARY PLAN REVIEW									
A	1/1/12	ISSUED FOR CITY OF PORTLAND WORKSHOP									



**LAND DESIGN SOLUTIONS**  
 LAND PLANNING, SITE PLANNING & LANDSCAPE ARCHITECTURE  
 P.O. Box 316, 160 Longwoods Road, Cumberland, ME 04081 tel:(207) 434-1717  
 CLIENT: **TPO PROPERTIES, LLC**  
 30 LEDGEWOOD DRIVE, FALMOUTH, MAINE 04104

**OLD BARN ESTATES**  
 1062 OCEAN AVENUE, PORTLAND, MAINE  
**POST DEVELOPMENT DRAINAGE PLAN**

DESIGN: PBB  
 DRAWN: DEPT.  
 CHKD: PBB

DATE: JAN 2013  
 SCALE: 1" = 80'

PROJ. NO.  
 DWG. NO.

REV. C  
**D-102**