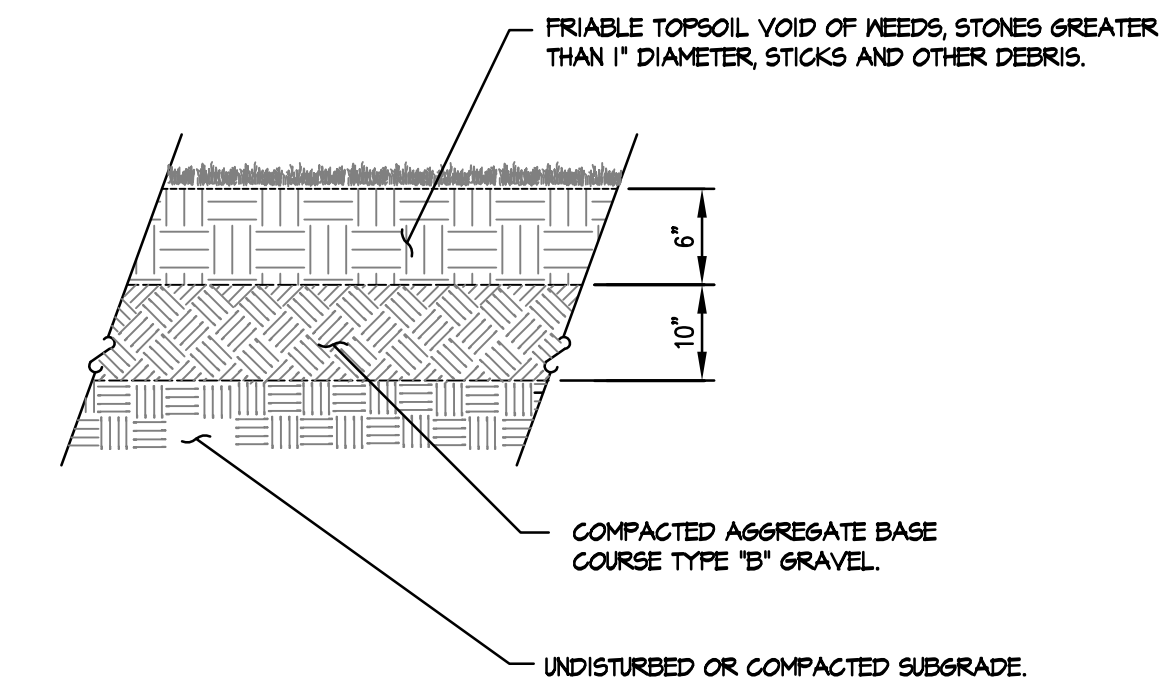
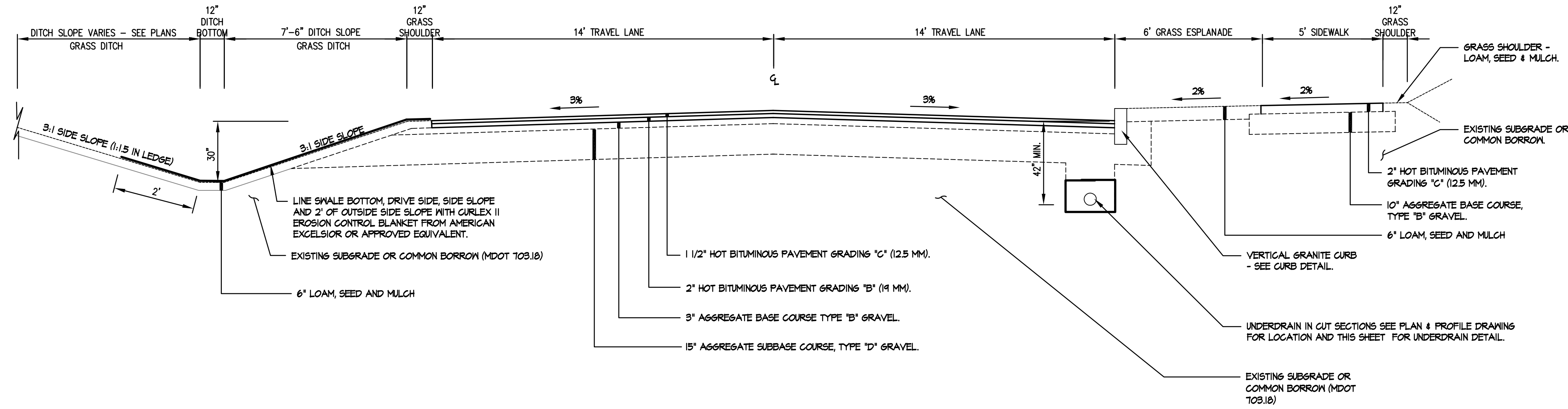
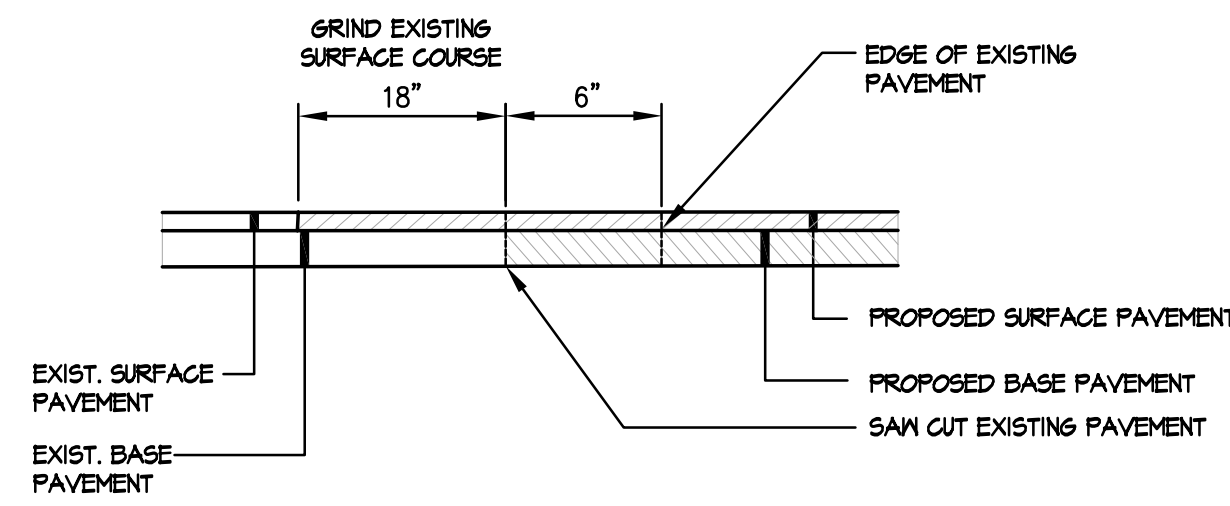


- NOTES:
- ADDITIONAL SUB-BASE GRAVEL AND/OR GEOTEXTILES MAY BE REQUIRED DURING CONSTRUCTION IF SOIL CONDITIONS WARRANT.
 - COMPACT SUB-BASE AND BASE GRAVEL TO 95 PERCENT OF MAXIMUM DRY DENSITY.
 - REMOVE ALL ORGANIC AND OTHER DELETERIOUS MATERIALS PRIOR TO PLACING BORROW OR SUB-BASE GRAVEL.
 - SUBDIVISION DRIVE SHALL CONFORM TO THE CITY OF PORTLAND TECHNICAL STANDARDS FOR LOCAL STREET FIGURE I-1.
 - SIDEWALK SHALL CONFORM TO THE CITY OF PORTLAND TECHNICAL STANDARDS FOR BITUMINOUS SIDEWALK FIGURE I-12.

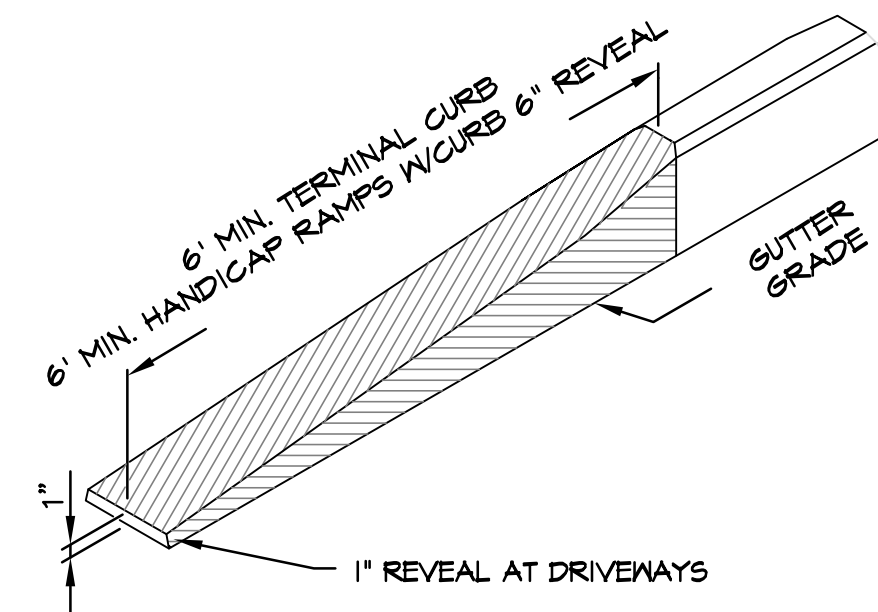


1 SUBDIVISION STREET AND SIDEWALK (ICE POND DRIVE) CROSS SECTION
SCALE: N.T.S.

2 GRASS MAINT. ACCESS DRIVE (LOT 9)
SCALE: N.T.S.

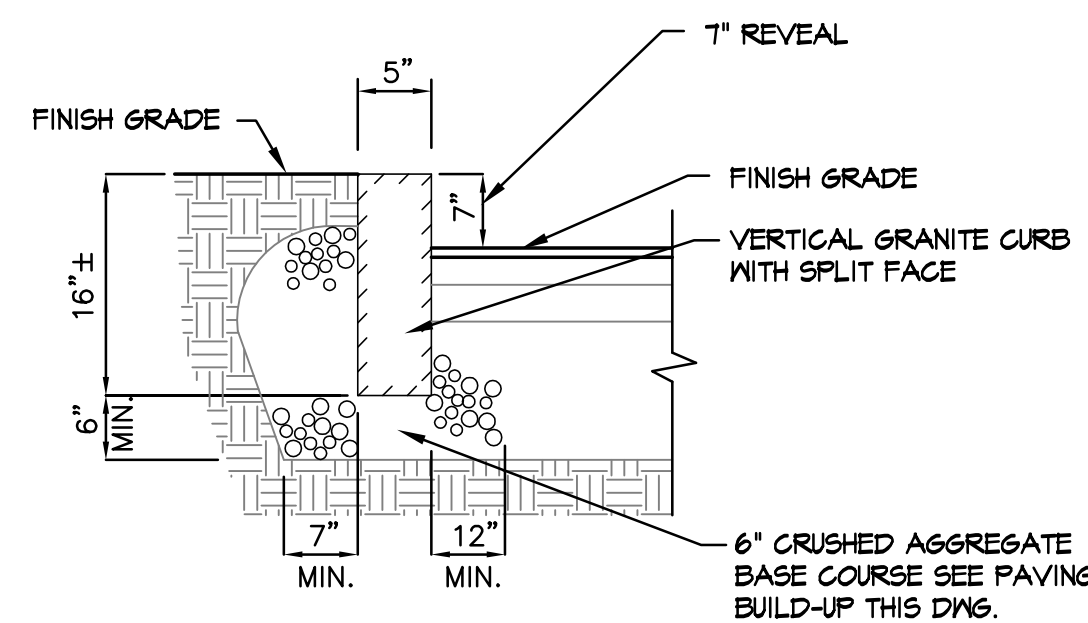


3 PAVEMENT BUTT JOINT
PROPOSED DRIVE AND LEDGEWOOD DRIVE



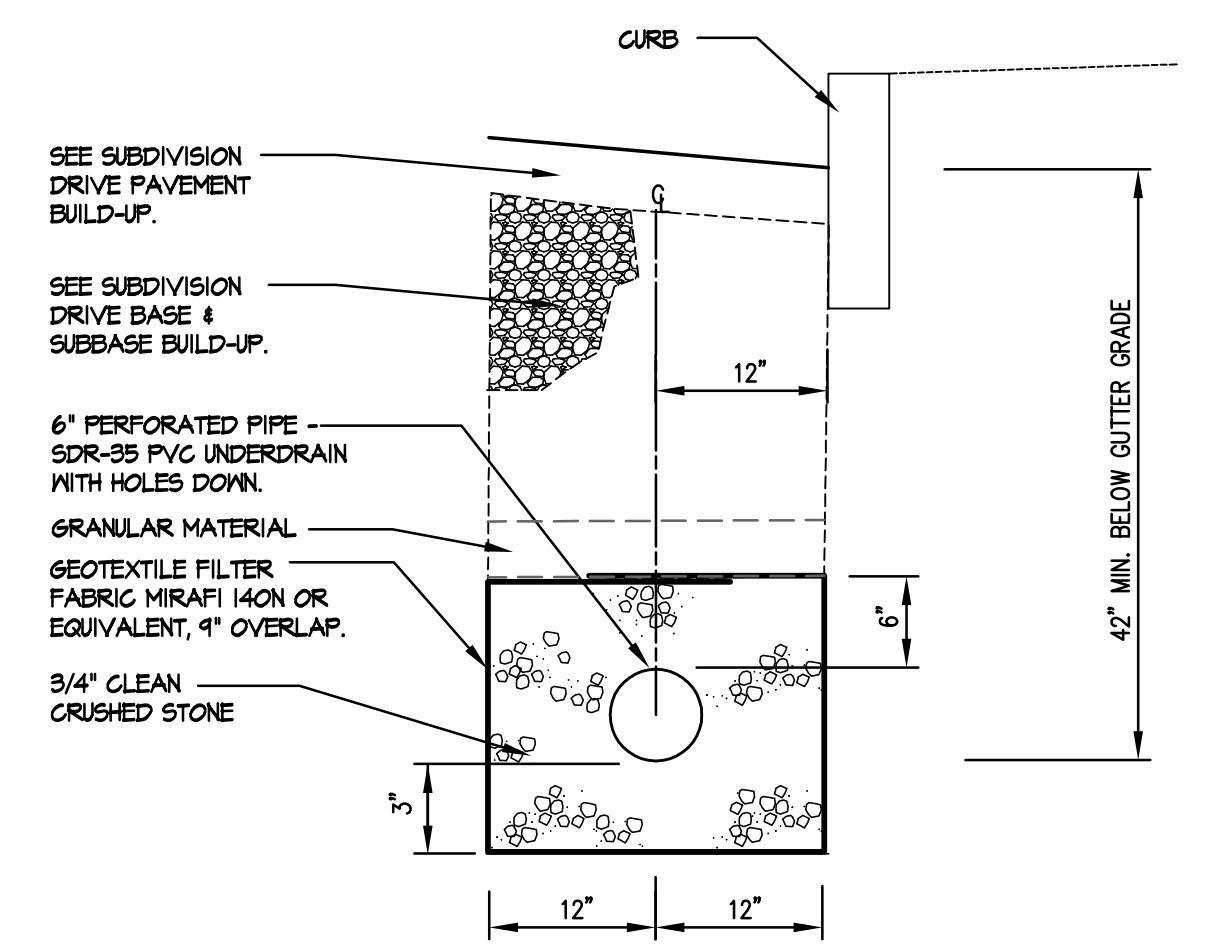
4 TERMINAL CURB SECTION
SCALE: N.T.S.

- NOTES:
- CURB ON RADIUS - VERTICAL CURB TYPE 1 SHALL BE USED ON RADIUS, NO STRAIGHT CURB STONES SHALL BE USED. 4 FT. MINIMUM LENGTH. SUBMIT SHOP DRAWINGS TO THE OWNER'S REPRESENTATIVE OF CURB STONE LENGTHS TO BE USED.
 - MINIMUM LENGTH OF STRAIGHT CURB STONES SHALL BE 4'.
 - MAXIMUM LENGTH OF STRAIGHT CURB STONES SHALL BE 8'.
 - JOINTS BETWEEN CURB STONES SHALL 1/4" +/- TO 1/8" MAX. PLACE 4"x8" 1/2" FILTER FABRIC IN THE BACK PORTION OF THE JOINT TO PREVENT BACKFILL MATERIAL INFILTRATION.
 - CONTRACTOR TO ADJUST CURB REVEAL AT HANDICAP TIP DOWN TO MEET 12:1 MAX. GRADE.
 - GRANITE CURB TO CONFORM TO THE CITY OF PORTLAND TECHNICAL STANDARDS FIGURE I-16.

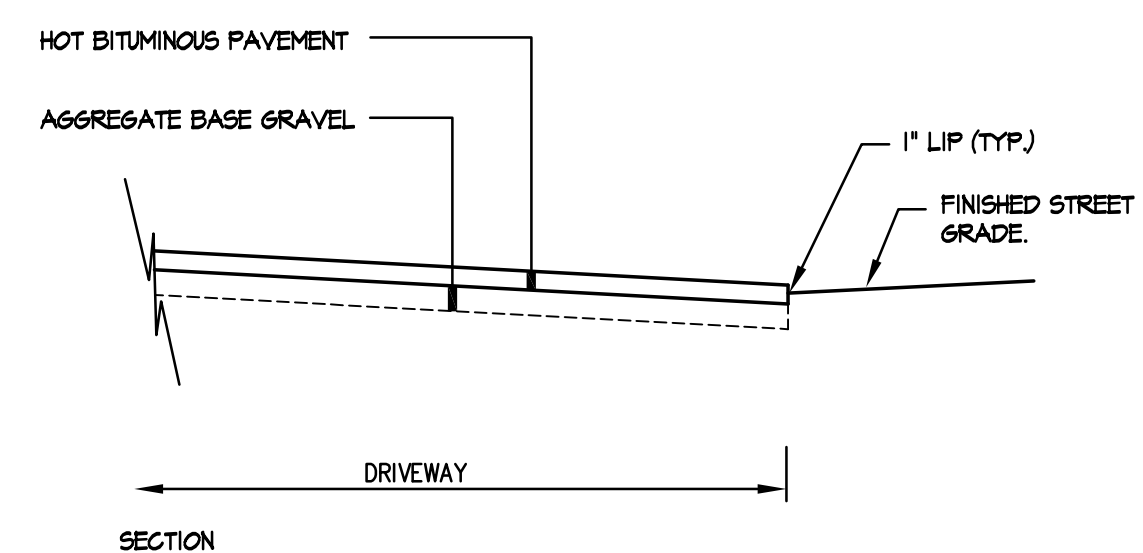
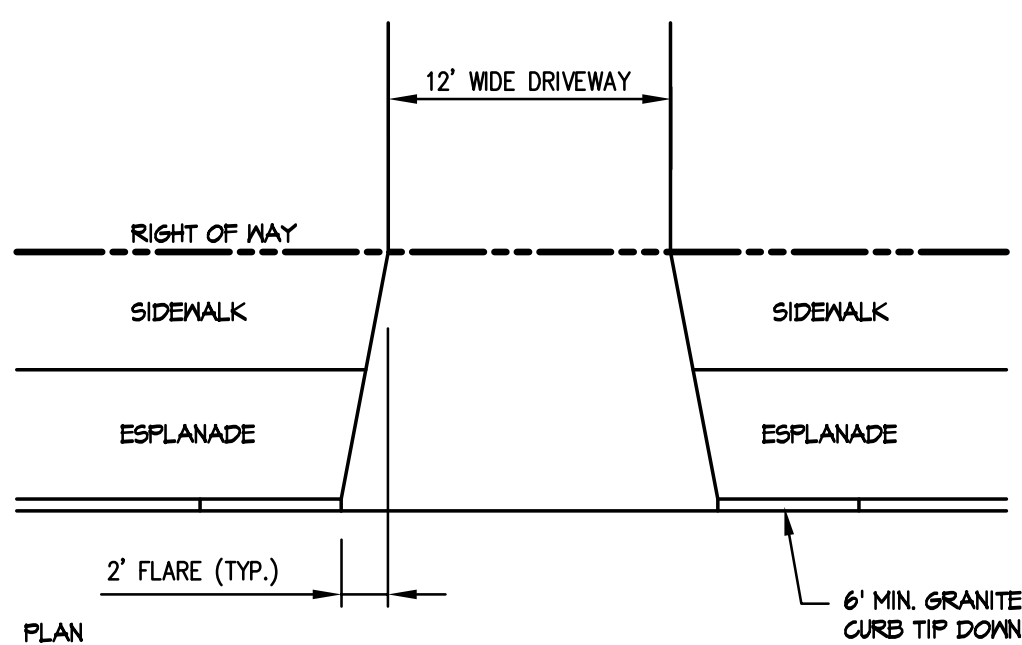


5 VERTICAL GRANITE CURB
SCALE: N.T.S.

- NOTES:
- THE UNDERDRAIN FOR THE SUBDIVISION DRIVE SHALL CONFORM TO THE CITY OF PORTLAND TECHNICAL STANDARDS FOR TYPE 'B' UNDERDRAIN INSTALLATION - SEE FIGURE I-20 ALTERNATIVE 'A'.



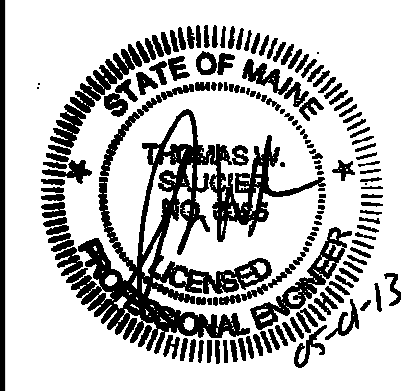
6 SUBDIVISION DRIVE UNDERDRAIN (TYPE B)
SCALE: N.T.S.



7 DRIVEWAY APRON LAYOUT

Drawing Name: K:\D_Brown\Open\Drawings\13\1301\1301.dwg / Title: May 1, 13 / 9:39 AM

REV.	DATE	STATUS	BY	CHKD.	APPD.	REV.	DATE	STATUS	BY	CHKD.	APPD.
E	5/1/13	REMOVED PEDESTRIAN WALKWAY DETAIL									
D	3/4/13	ISSUED TO THE TOWN OF FALMOUTH FOR FOR FINAL SUBDIVISION REVIEW	DEPT.	PBB	TWS						
C	2/8/13	ISSUED TO THE CITY OF PORTLAND FOR FINAL SUBDIVISION REVIEW	DEPT.	PBB	TWS						
B	1/9/13	ISSUED TO THE TOWN OF FALMOUTH FOR PRELIMINARY PLAN REVIEW	DEPT.	PBB	PBB						
A	1/01/13	SUBMITTED TO CITY OF PORTLAND FOR WORKSHOP	DEPT.	PBB	TWS						



LAND DESIGN SOLUTIONS
LAND PLANNING, SITE PLANNING & LANDSCAPE ARCHITECTURE
P.O. Box 316, 160 Longwoods Road, Cumberland, ME 04081 tel:(207) 434-1111
CLIENT: **TPO PROPERTIES, LLC**
30 LEDGEWOOD DRIVE, FALMOUTH, MAINE 04104

DESIGN: PBB
DRAWN: DEPT.
CHKD: PBB
DATE: MAY 2012
SCALE: AS NOTED

OLD BARN ESTATES
1062 OCEAN AVENUE, PORTLAND, MAINE

SITE DETAILS

PROJ. NO.	
DWG. NO.	C-301

REV. E