

A

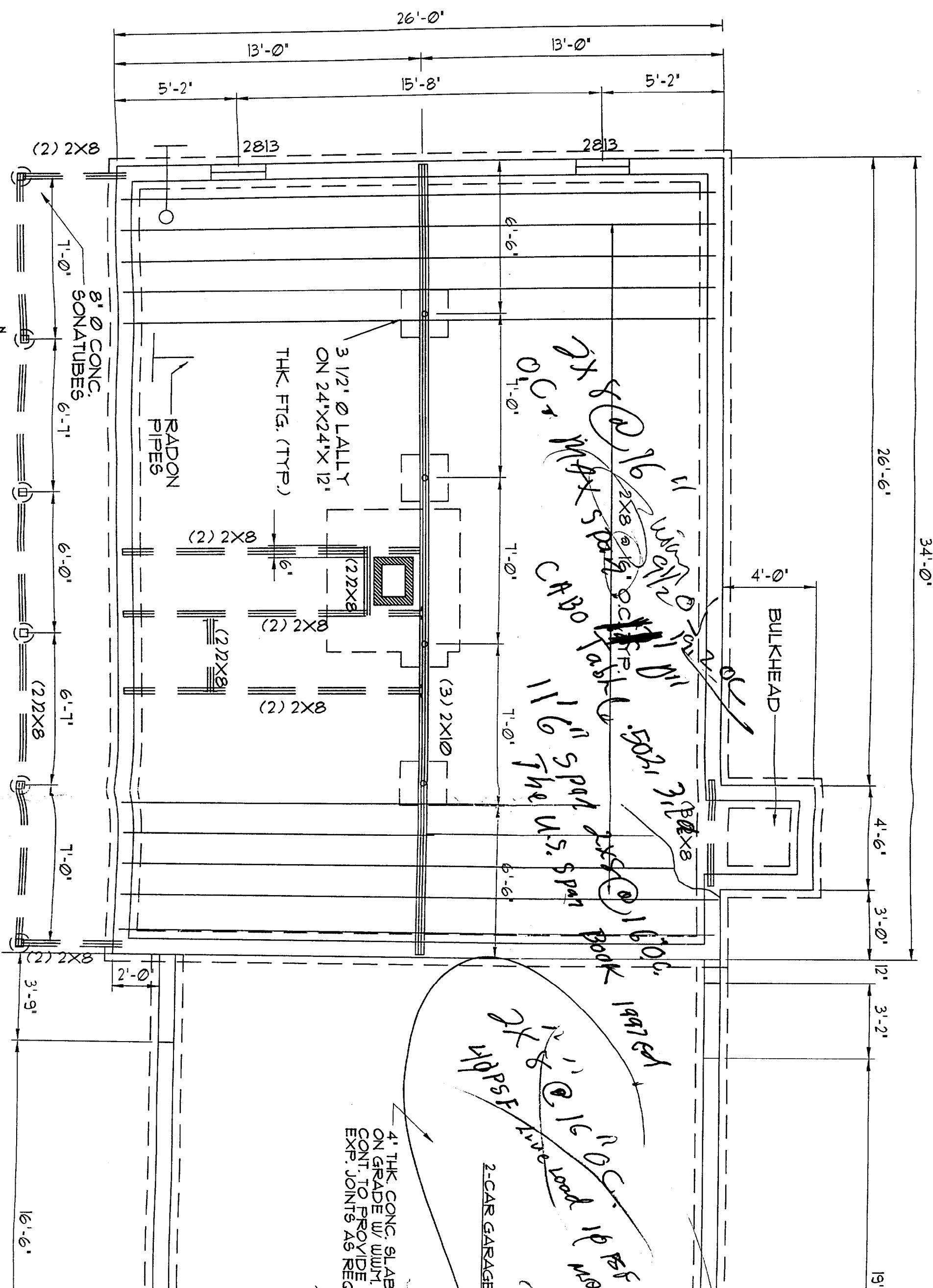
N

FOUNDATION

FOUNDATION

FOUNDATION

FOUNDATION



(2) 2X8

2813

2813

8" Ø CONC. SONATUBES

RADON PIPES

3 1/2" Ø LALLY ON 24"X24"X 12" THK FTG. (TYP.)

(2) 2X8

(2) 2X8

(2) 2X8

(3) 2X10

BULKHEAD

4" THK. CONC. SLAB ON GRADE W/ WURT. EXP. JOINTS AS REQ.

2-CAR GARAGE

Handwritten notes:
 11" joists @ 16" o.c.
 11" G" SPAN JOIST @ 16" o.c.
 CARBON FIBER
 11" G" SPAN JOIST @ 16" o.c.
 THE U.S. SPAN

Handwritten notes:
 11" G" SPAN JOIST @ 16" o.c.
 CARBON FIBER

26'-0"

13'-0"

13'-0"

5'-2"

15'-8"

5'-2"

26'-6"

34'-0"

4'-0"

4'-6"

3'-0"

12'

3'-2"

19'-

(2) 2X8

3'-9"

2'-0"

16'-6"

34'-0" A

26'-0"

13'-0"

5'-2"

15'-8"

(2) 2X8

2813

6" CONC
SONGMADE

RADON
PIPES

3 1/2" Ø LALLY
ON 24" X 24" X 12"
THK FIG. (TYP.)

(2) 2X8

(2) 2X8

(2) 2X8

(2) 2X8

(2) 2X8

(3) 2X10

Handwritten notes:
11'6" Spd
U.S. Spar
CABO
16'0"
1976

4" THK. CONC. SLAB
ON GRADE W/ WJM,
CONT. TO PROVIDE
EXP. JOINTS AS REQ'D.

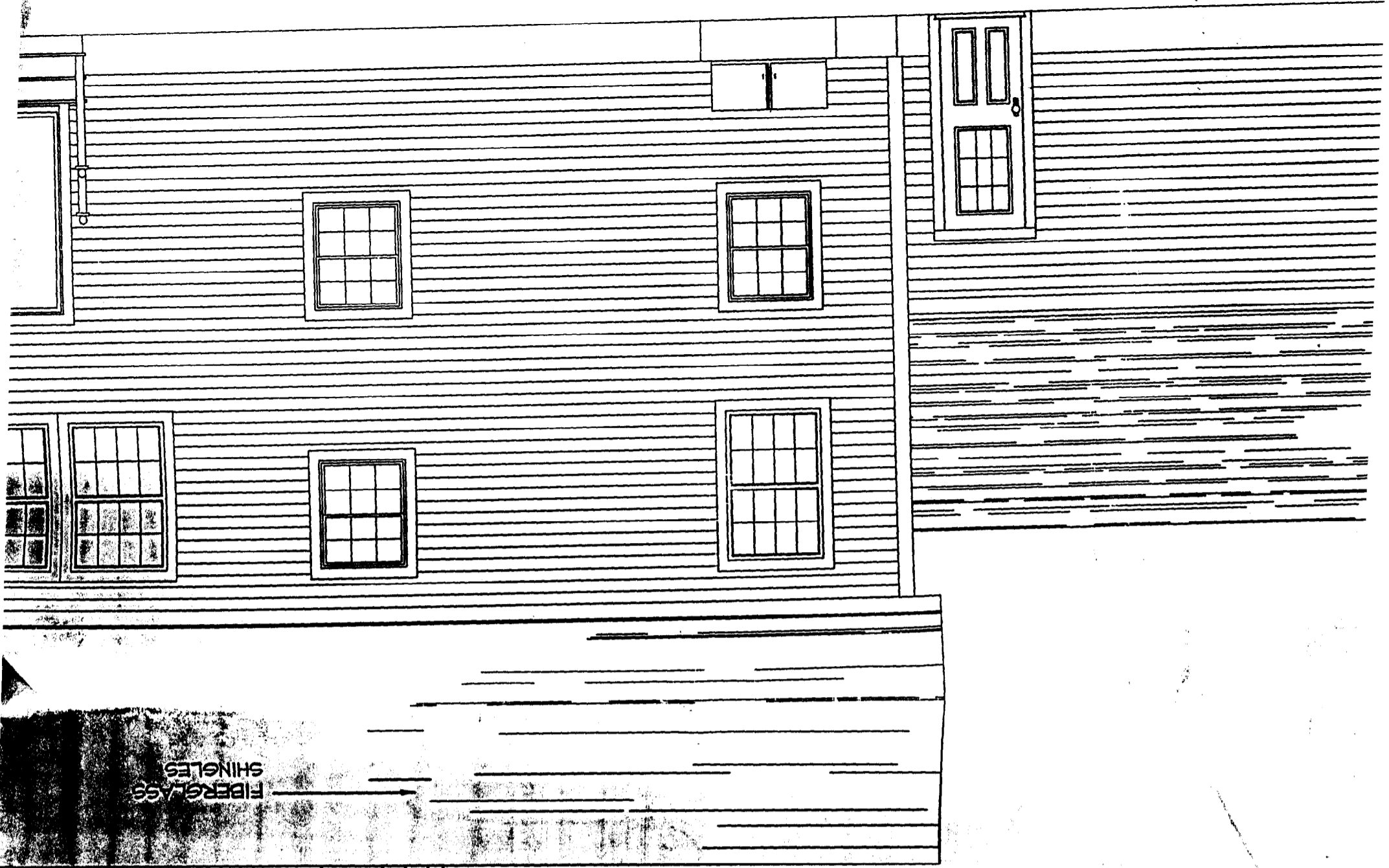
(2) 2X8

3'-9"

2'-0"

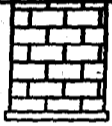
16'-6"

24'-0"

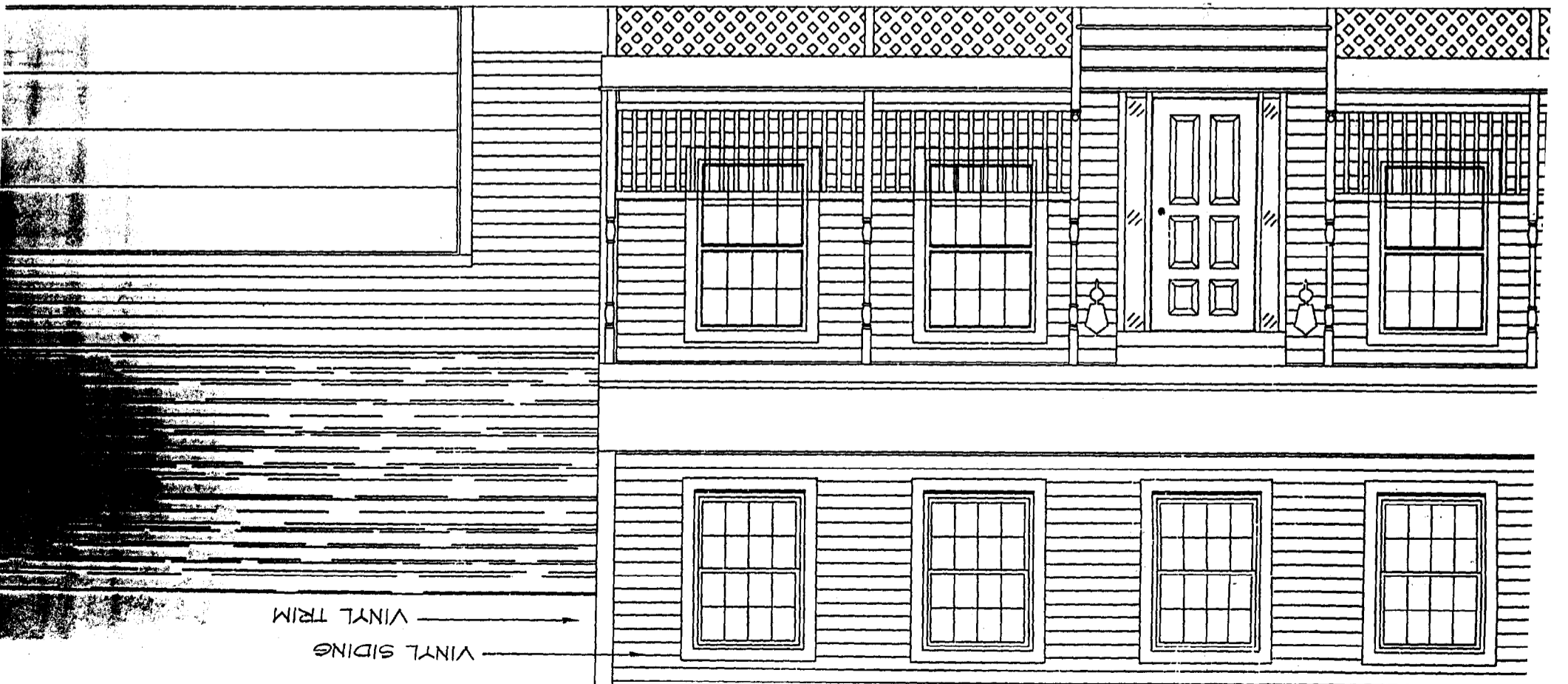


FIBERGLASS SHINGLES

2'-6"
(MIN.)



ELEVATION



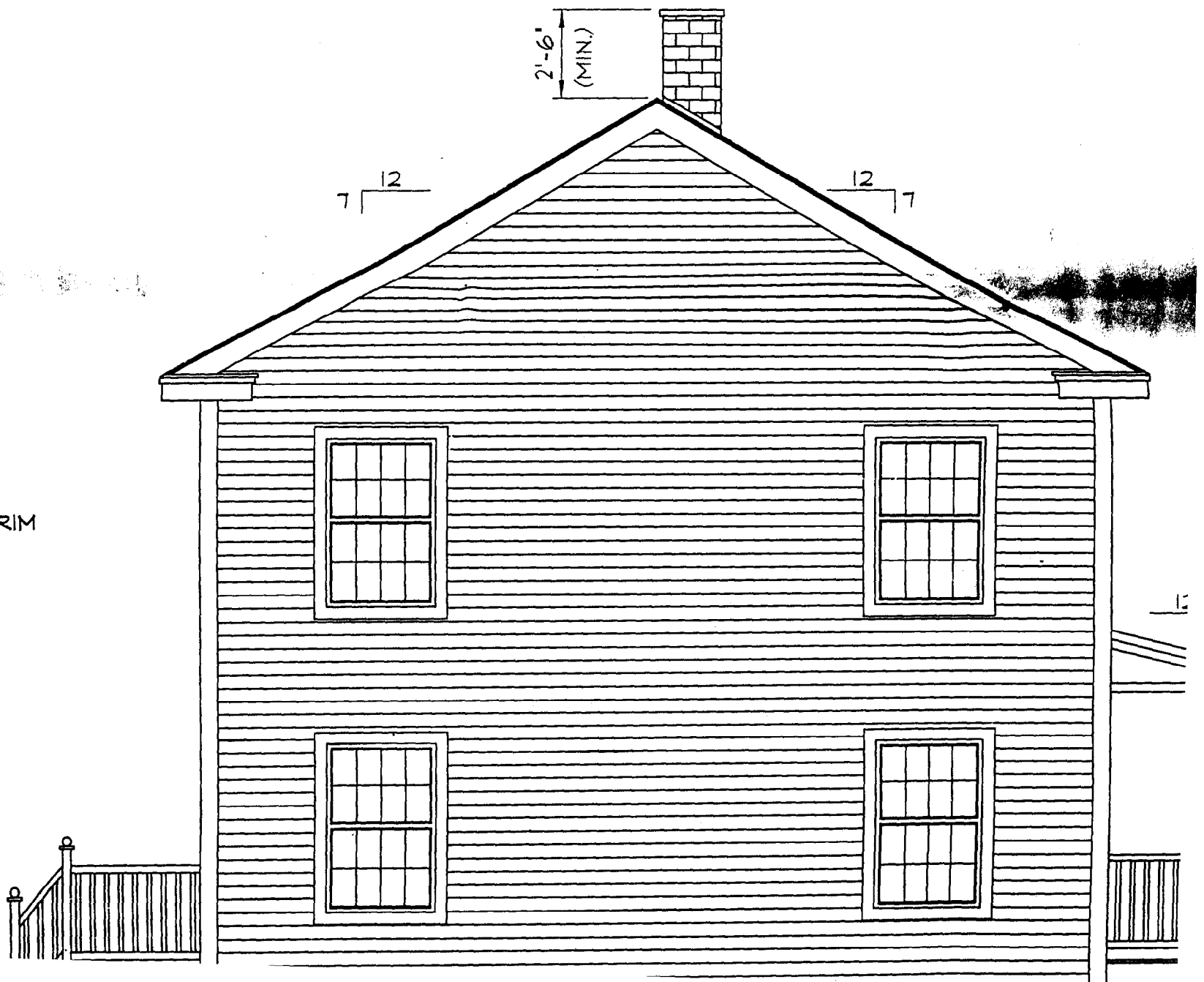
VINYL TRIM

VINYL SIDING

FIBERGLASS SHINGLES



RIGHT ELEVATION
 SCALE: 1/4" = 1'-0"



VINYL SIDING
 VINYL TRIM