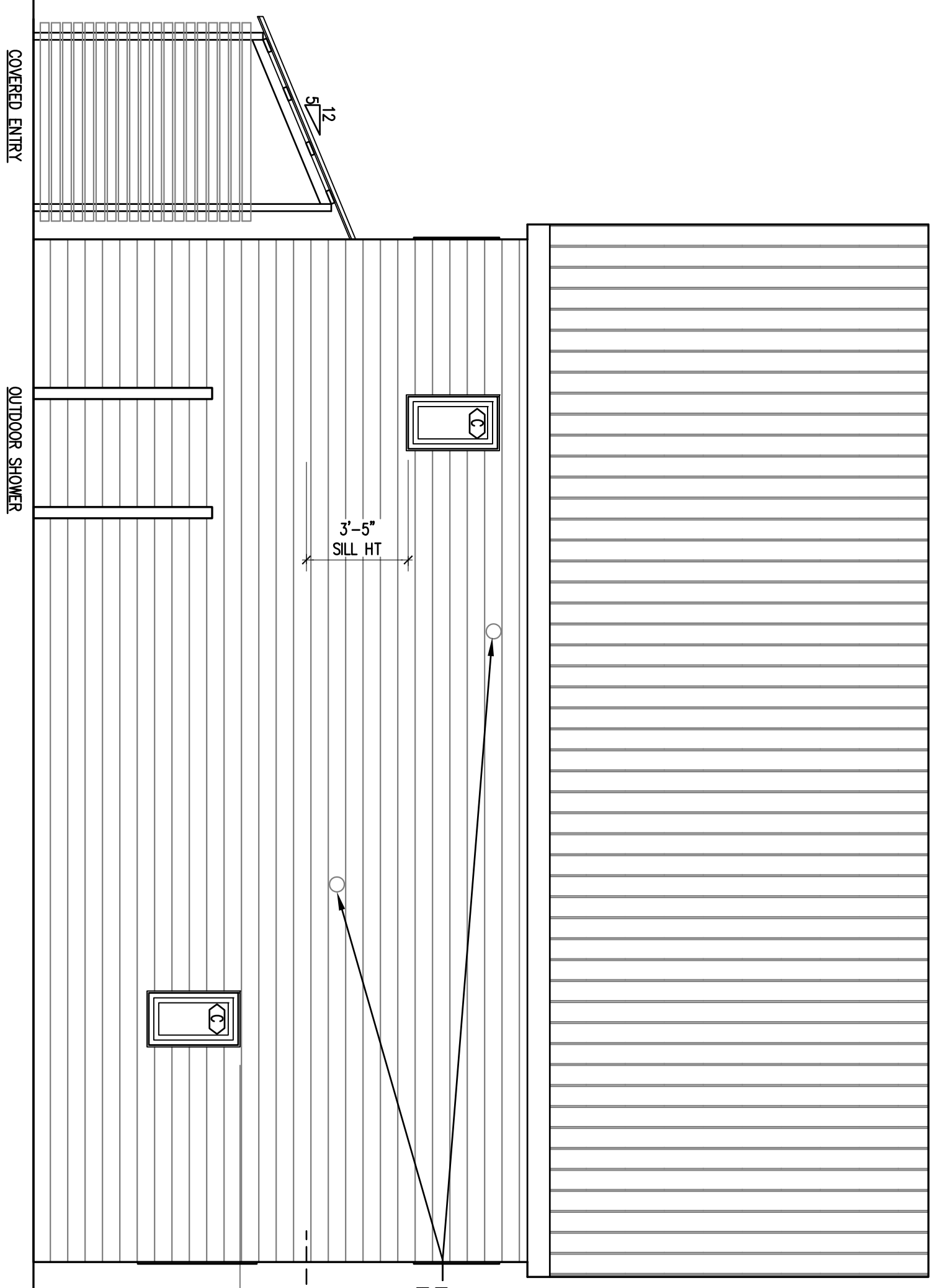


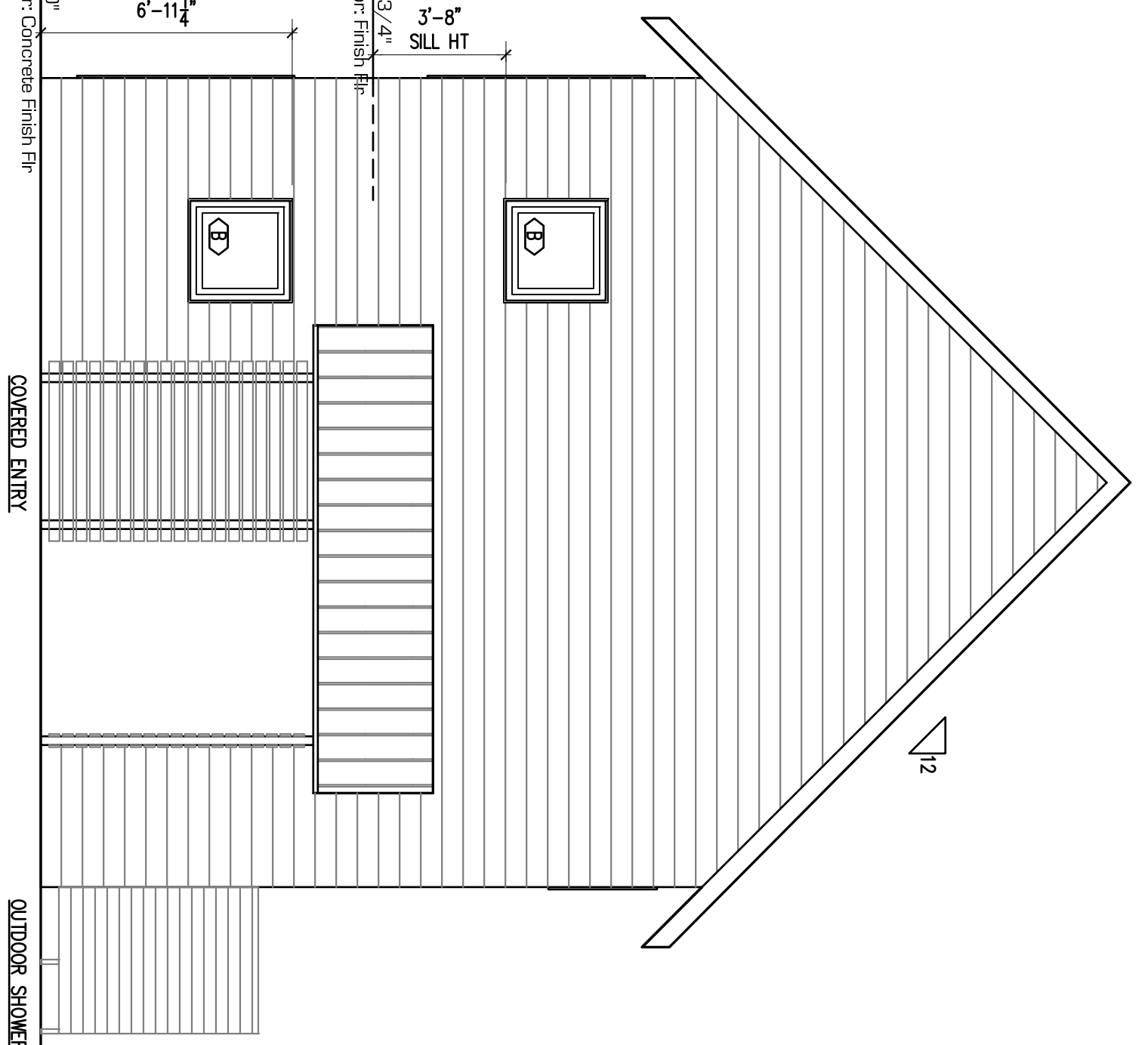




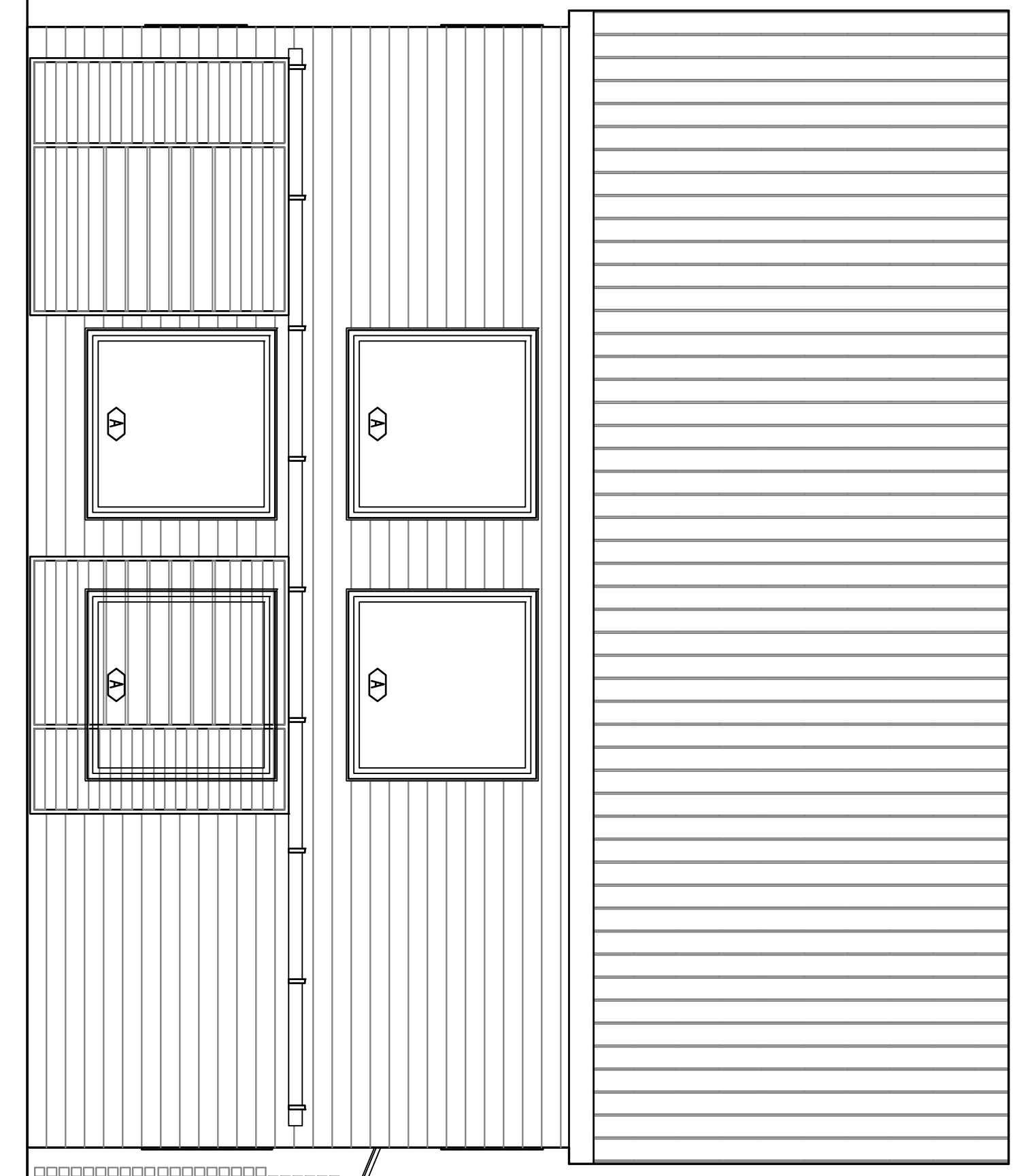
3 ELEVATION NORTH  
1/4" = 1'-0"



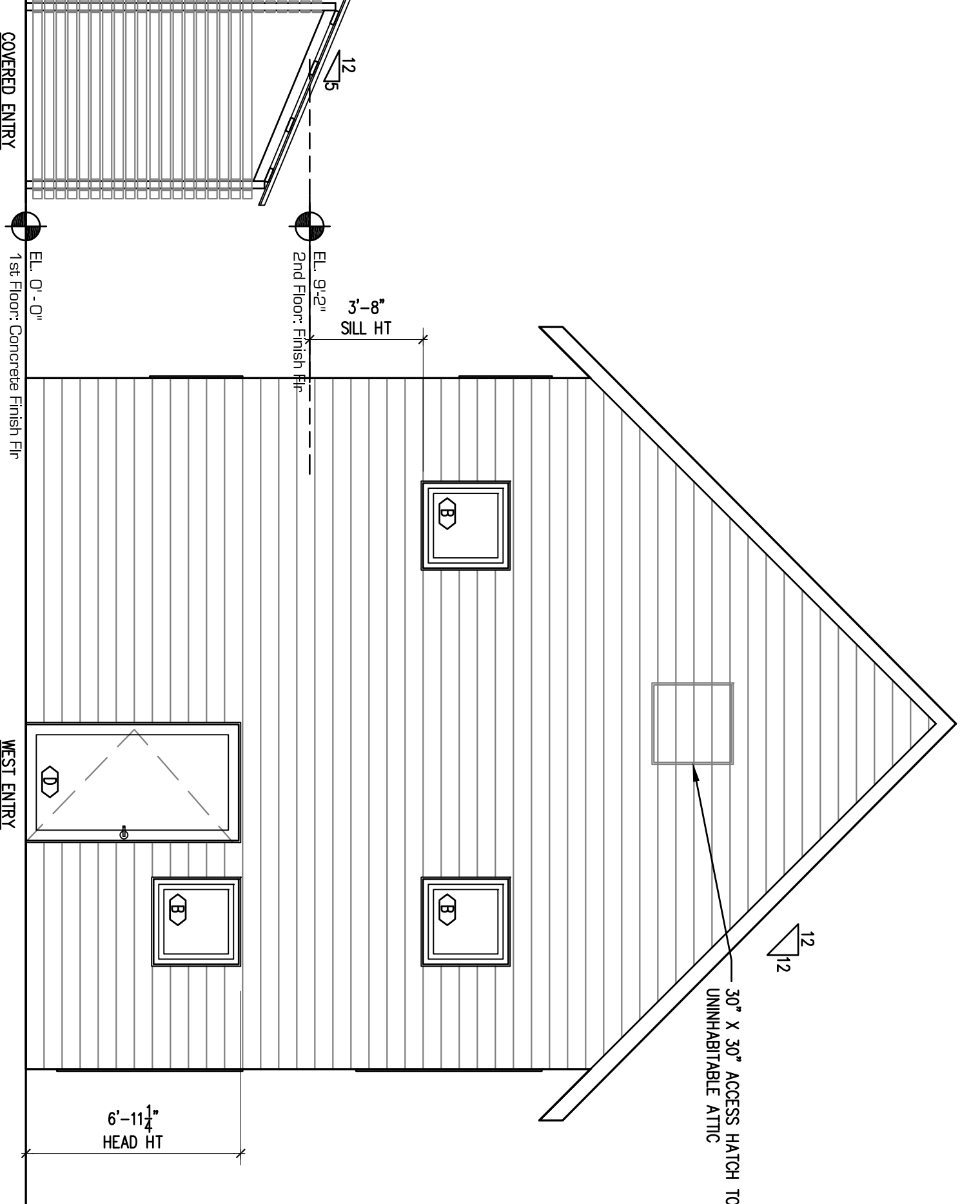
4 ELEVATION EAST  
1/4" = 1'-0"



1 ELEVATION SOUTH  
1/4" = 1'-0"



2 ELEVATION WEST  
1/4" = 1'-0"



# 760 OCEAN AVE

760 Ocean Avenue  
Portland Maine 04103

RELEASE HISTORY  
09 MAR 2013 BUILDING DEPT FILING

REVISION HISTORY

#	date	revision

SHEET TITLE:  
ELEVATIONS

SCALE: 1/4" = 1'-0"

DATE:

DRAWN BY: KCB  
CHECKED BY: ---

DRAWING #:

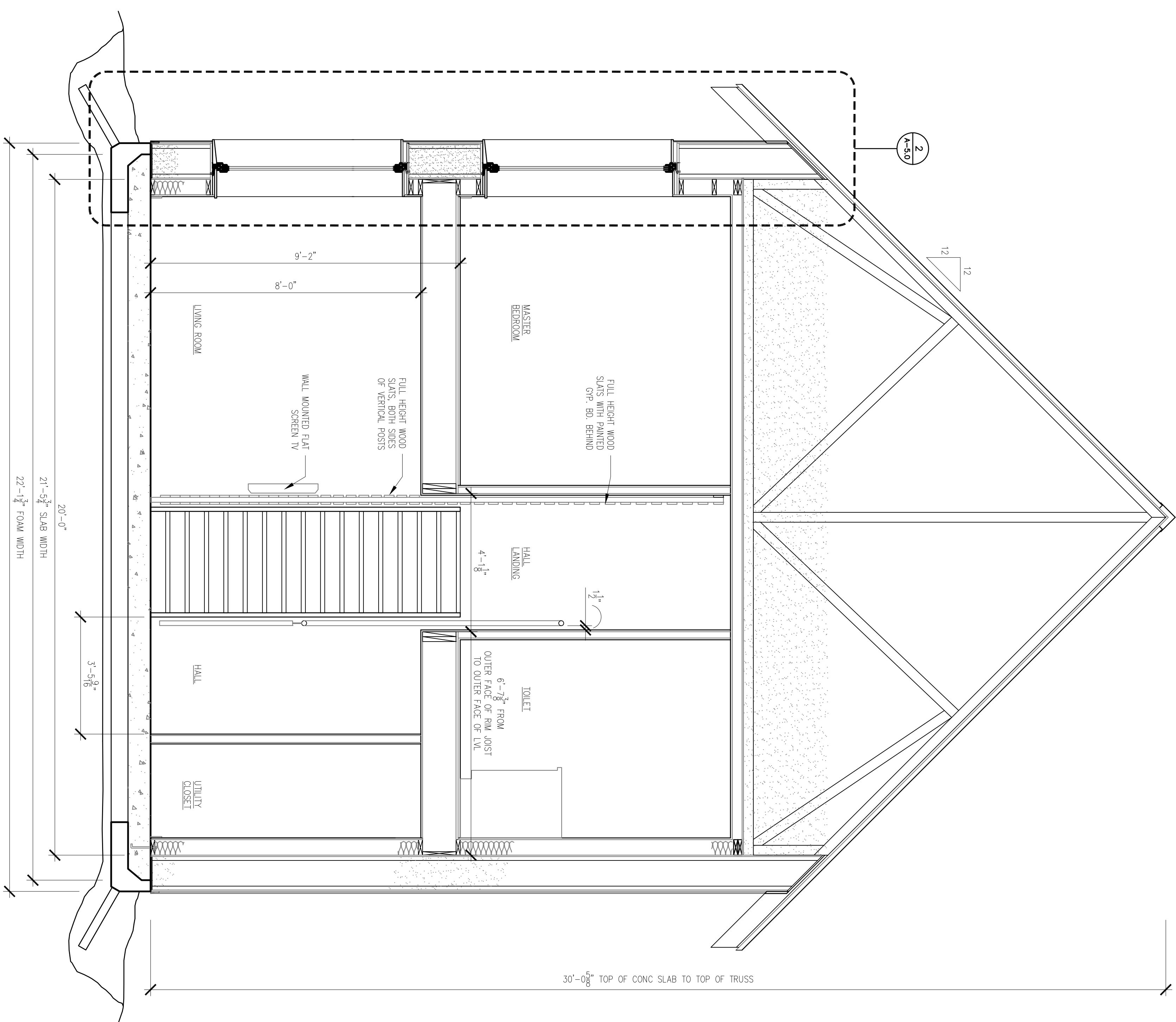
A-2.0

CONSULTANTS:

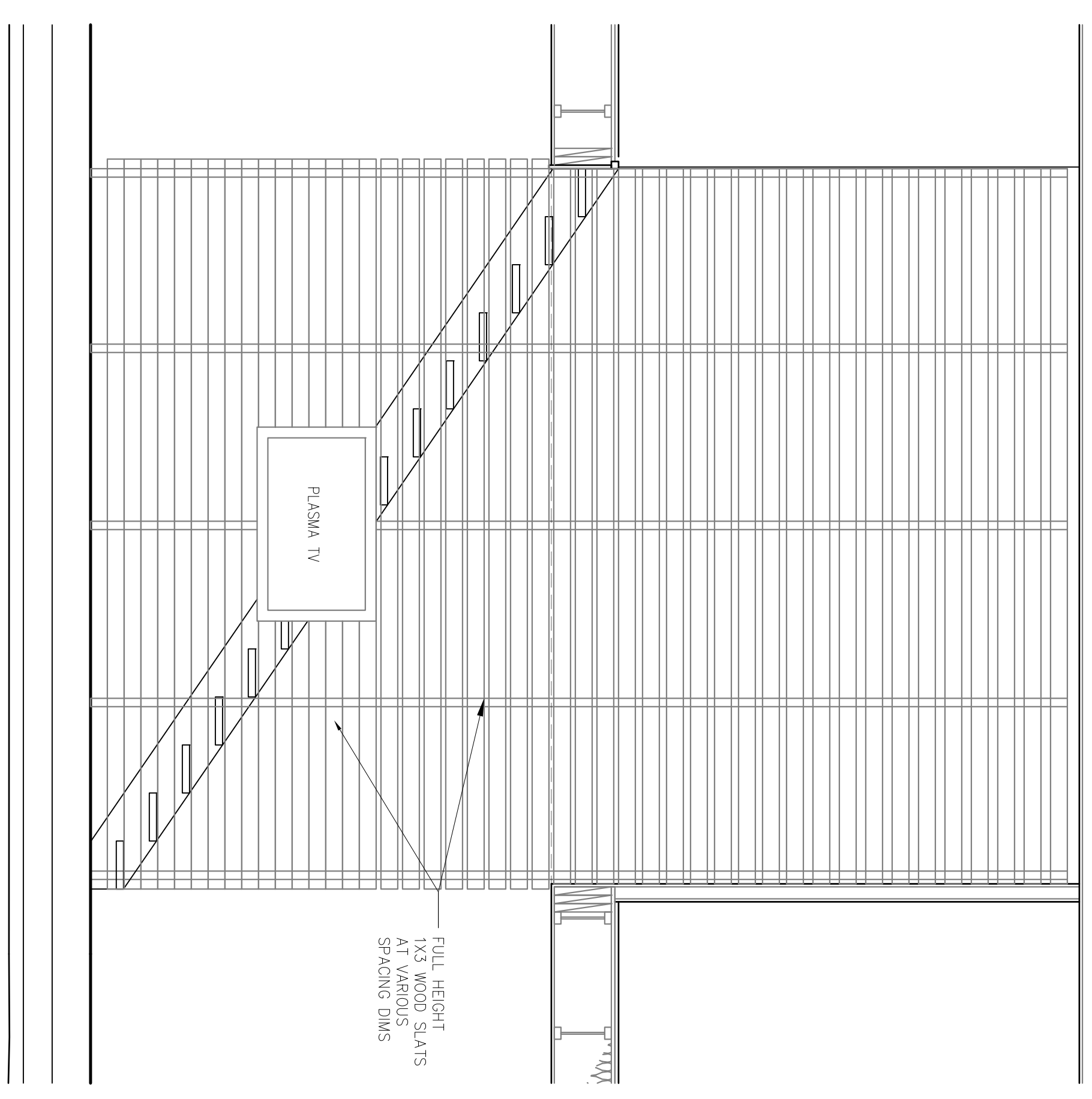
DRIFT INC. : DESIGN OFFICE  
KAREN BALA AIA LEED AP  
305 COMMERCIAL STREET  
PORTLAND MAINE 04101  
TEL: 917-776-3543

STAMP:

1 SECTION  
1/2" = 1'-0"



2 PARTIAL ELEVATION  
1/2" = 1'-0"



# 760 OCEAN AVE

760 Ocean Avenue  
Portland Maine 04103

RELEASE HISTORY  
08 MAR 2013 BUILDING DEPT FILING

date	revision

REVISION HISTORY

SHEET TITLE:  
SECTIONS AND DETAILS

SCALE:  
1/2" = 1'-0"

DATE:

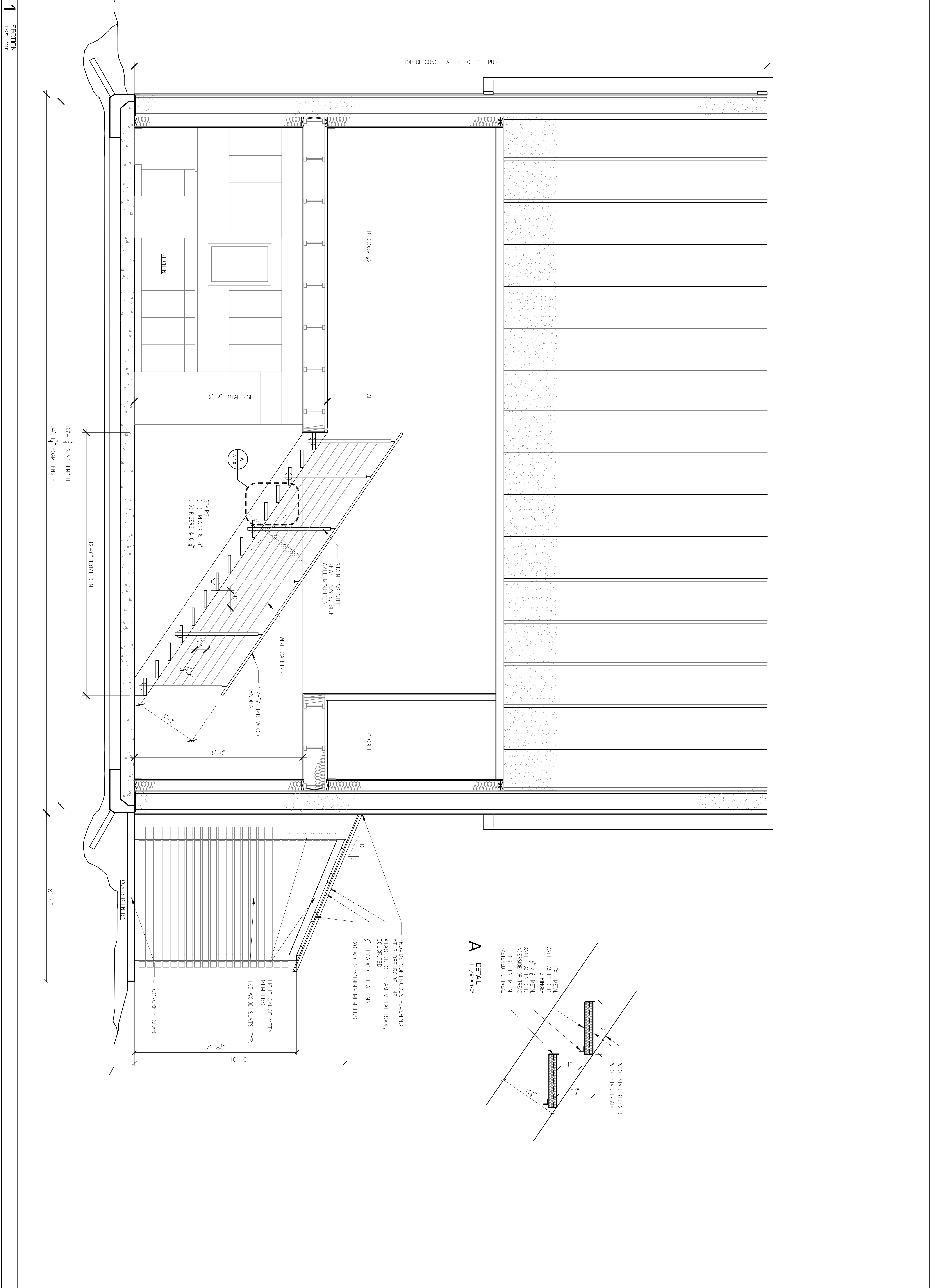
DRAWN BY: KCB  
CHECKED BY: ---

DRAWING #: A-3.0

**Drift**  
DESIGN OFFICE  
KAREN BALA AIA LEED AP  
305 COMMERCIAL STREET  
PORTLAND MAINE 04101  
TEL: 917-776-3543

CONSULTANTS:

STAMP:



STAMP:

**Drift**  
 DESIGN OFFICE  
 KAREN BALA AIA LEED AP  
 305 COMMERCIAL STREET  
 PORTLAND MAINE 04101  
 TEL: 917-776-3543

CONSULTANTS:

# 760 OCEAN AVE

760 Ocean Avenue  
 Portland Maine 04103

RELEASE HISTORY  
 09 MAR 2013 BUILDING DEPT FILING

REVISION HISTORY	
#	description

SHEET TITLE:  
 SECTIONS AND DETAILS

SCALE: AS NOTED

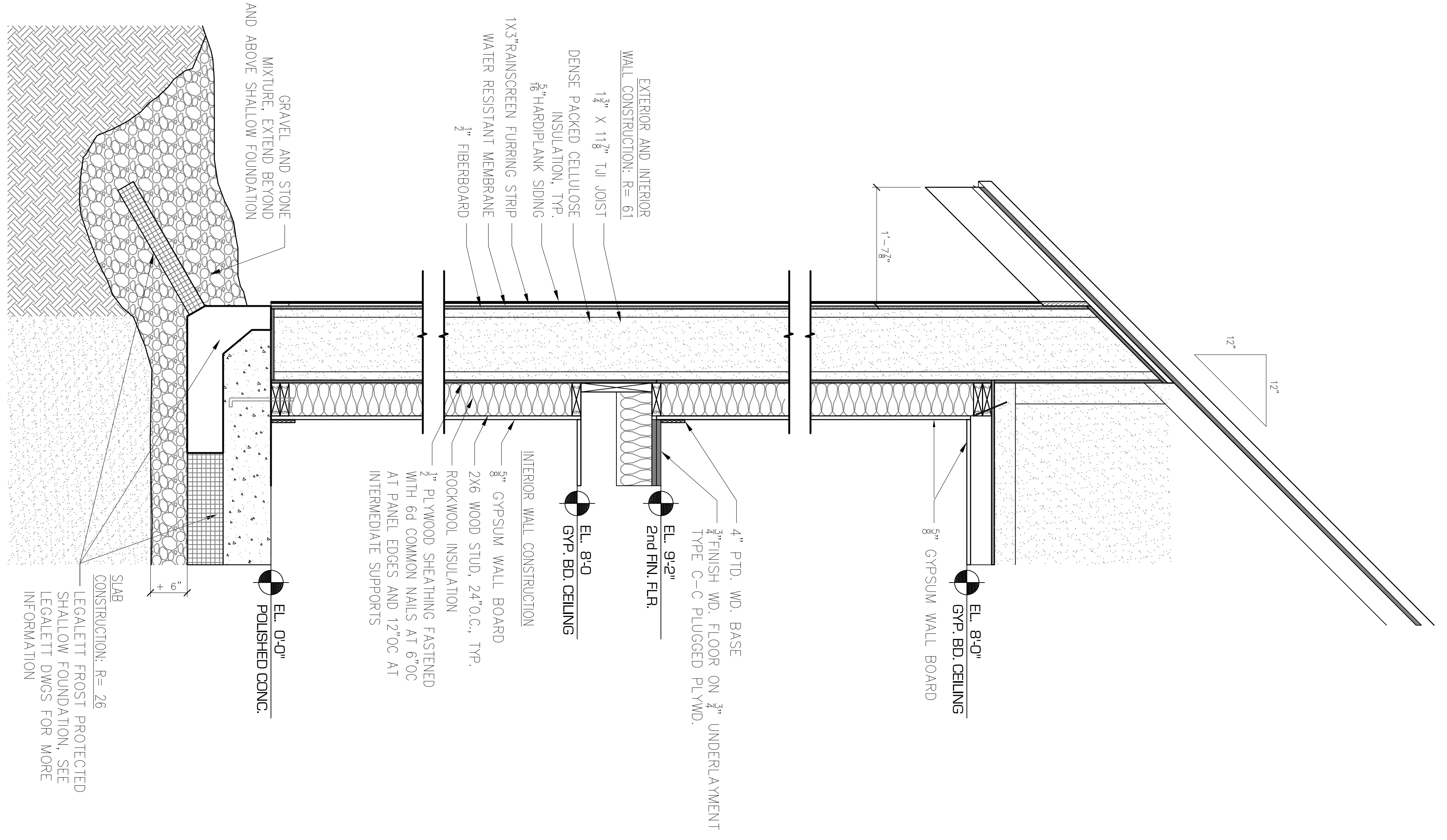
DATE:

DRAWN BY: KCB  
 CHECKED BY: ---

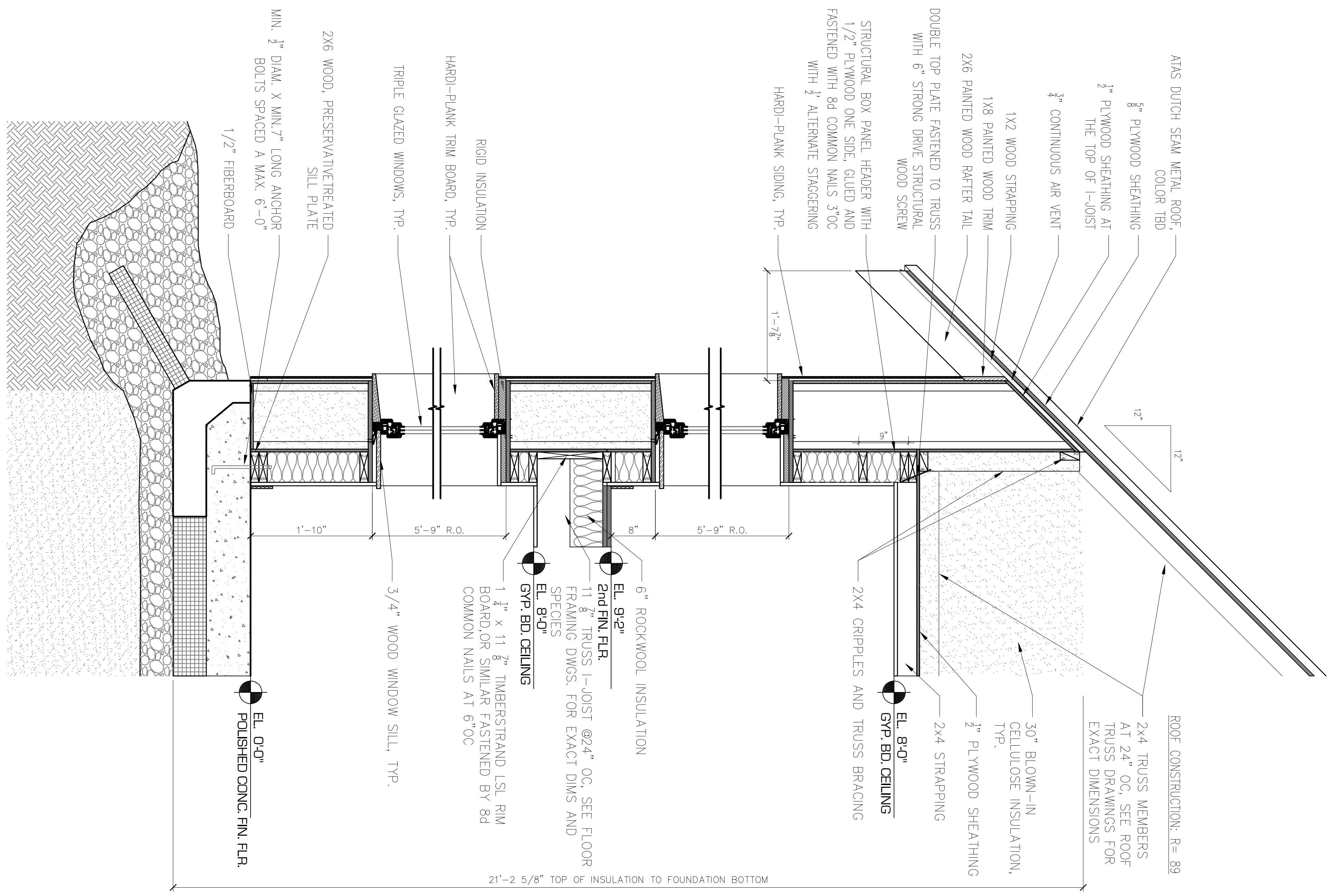
DRAWING #:

A-4.0

1 SECTION  
1" = 1'-0"



2 WALL SECTION  
1" = 1'-0"



# 760 OCEAN AVE

760 Ocean Avenue  
Portland Maine 04103

**Drift**  
DESIGN OFFICE  
KAREN BALA AIA LEED AP  
305 COMMERCIAL STREET  
PORTLAND MAINE 04101  
TEL: 917-776-3543

CONSULTANTS:

RELEASE HISTORY  
DATE: 03 MAR 2013 BUILDING DEPT FILING

REVISION HISTORY  
# DATE REVISION

#	DATE	REVISION

SHEET TITLE:  
SECTIONS AND DETAILS

SCALE: 1" = 1'-0"

DATE:

DRAWN BY: KCB  
CHECKED BY: ---

DRAWING #:

A-5.0

STAMP: