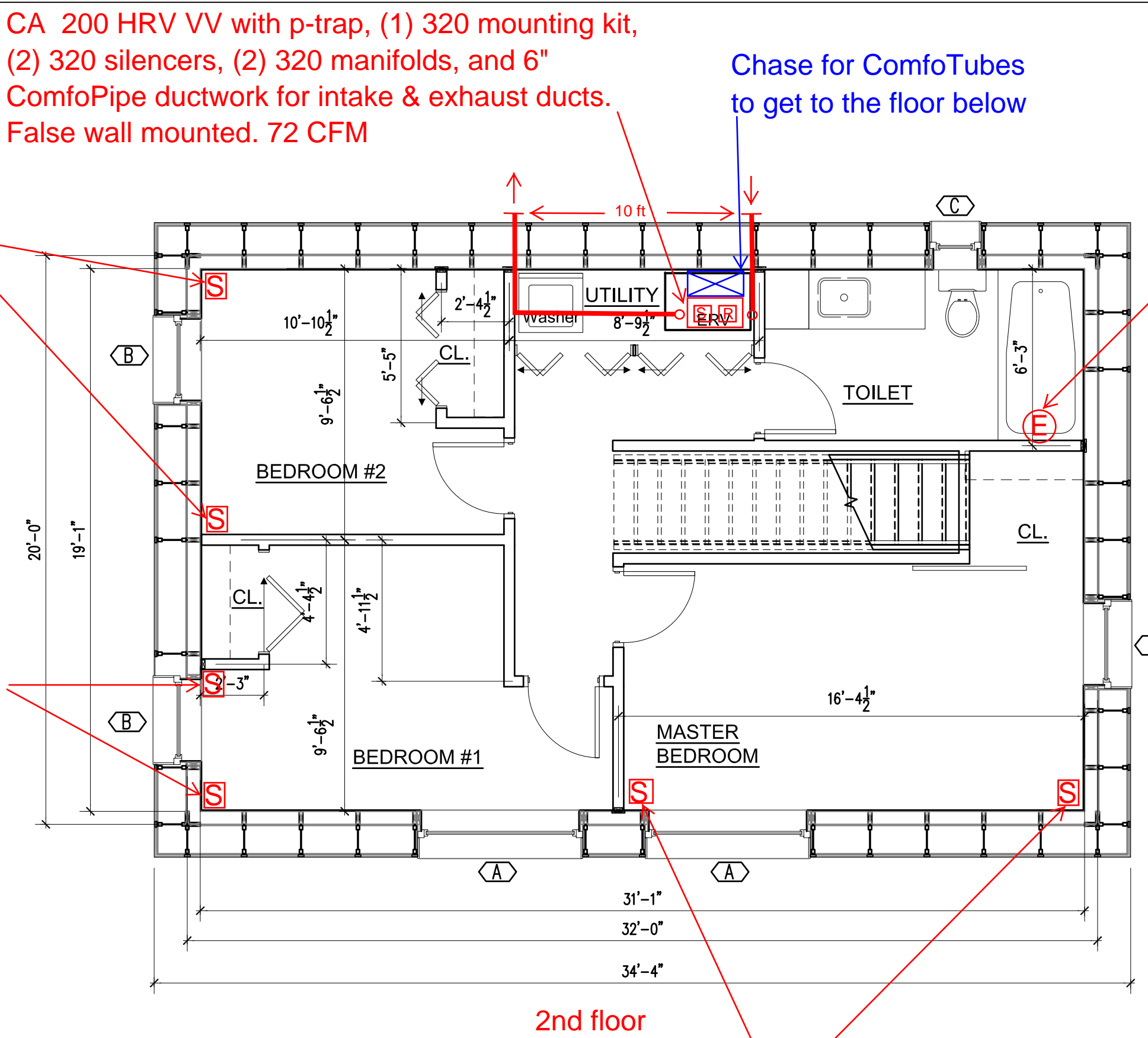
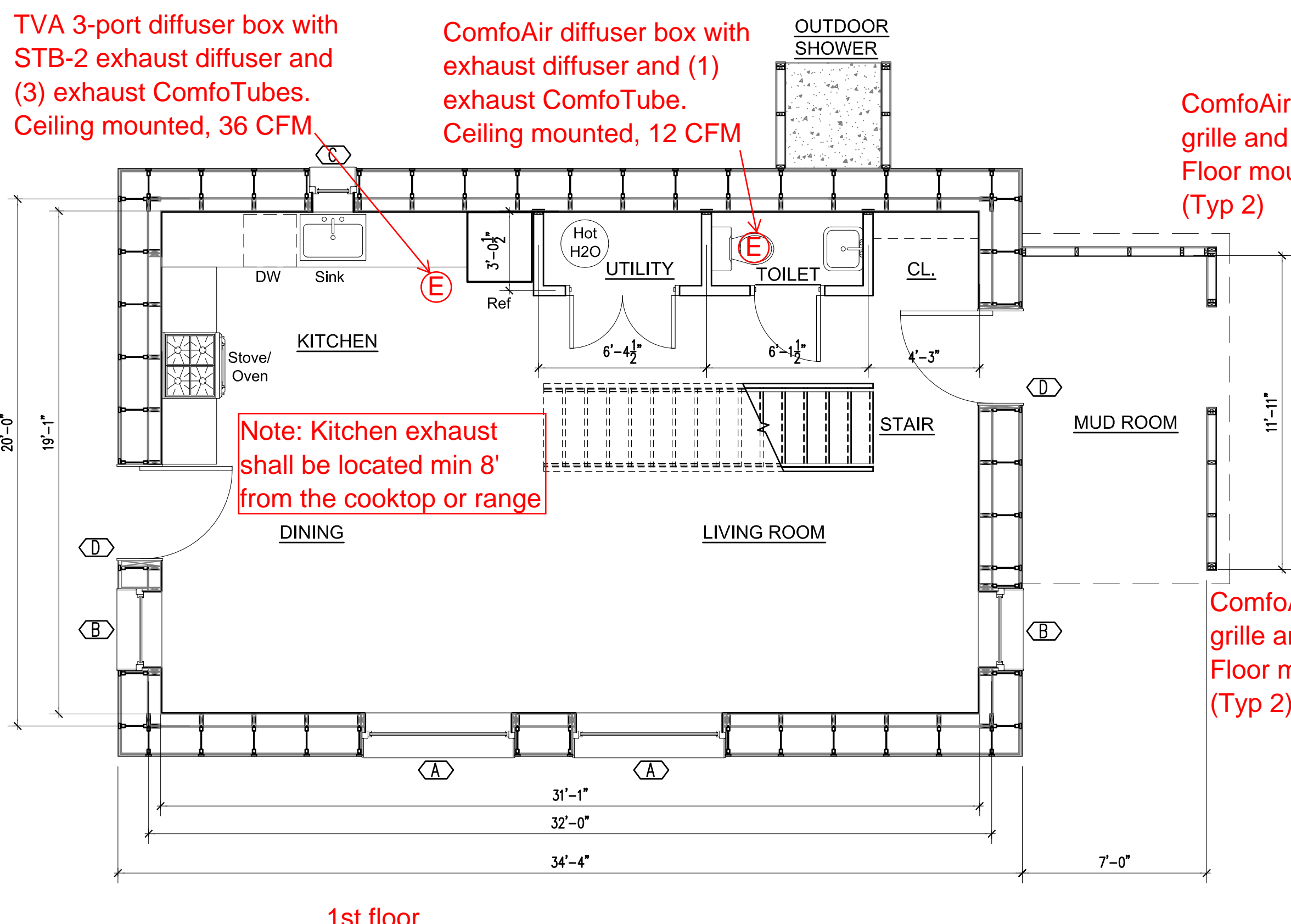


STAMP:

**drift**  
 DESIGN OFFICE  
 DRIFT INC. : DESIGN OFFICE  
 KAREN BALA AIA LEED AP  
 305 COMMERCIAL STREET  
 PORTLAND MAINE 04101  
 TEL: 917-776-3543

CONSULTANTS:



TVA 3-port diffuser box with STB-2 exhaust diffuser and (3) exhaust ComfoTubes. Ceiling mounted, 36 CFM.

ComfoAir diffuser box with exhaust diffuser and (1) exhaust ComfoTube. Ceiling mounted, 12 CFM

ComfoAir register box with grille and (1) ComfoTube. Floor mounted, 12 CFM (Typ 2)

CA 200 HRV VV with p-trap, (1) 320 mounting kit, (2) 320 silencers, (2) 320 manifolds, and 6" ComfoPipe ductwork for intake & exhaust ducts. False wall mounted. 72 CFM

Chase for ComfoTubes to get to the floor below

ComfoAir diffuser box with exhaust diffuser and (2) exhaust ComfoTubes. High wall mounted, 24 CFM

Note: Kitchen exhaust shall be located min 8' from the cooktop or range

ComfoAir register box with grille and (1) ComfoTube. Floor mounted, 12 CFM (Typ 2)

ComfoAir register box with grille and (1) ComfoTube. Floor mounted, 12 CFM (Typ 2)

1 CONSTRUCTION PLAN : 2nd Floor  
 1/4" = 1'-0"

2 CONSTRUCTION PLAN : 1st Floor  
 1/4" = 1'-0"

760 OCEAN AVE

760 Ocean Avenue  
 Portland Maine 04103

RELEASE HISTORY	
date:	remark:

REVISION HISTORY		
#	date:	revision:

SHEET TITLE:  
 PLANS

SCALE: 1/4" = 1'-0"

DATE:

DRAWN BY: KCB      CHECKED BY: ---

DRAWING #:

A-1.0