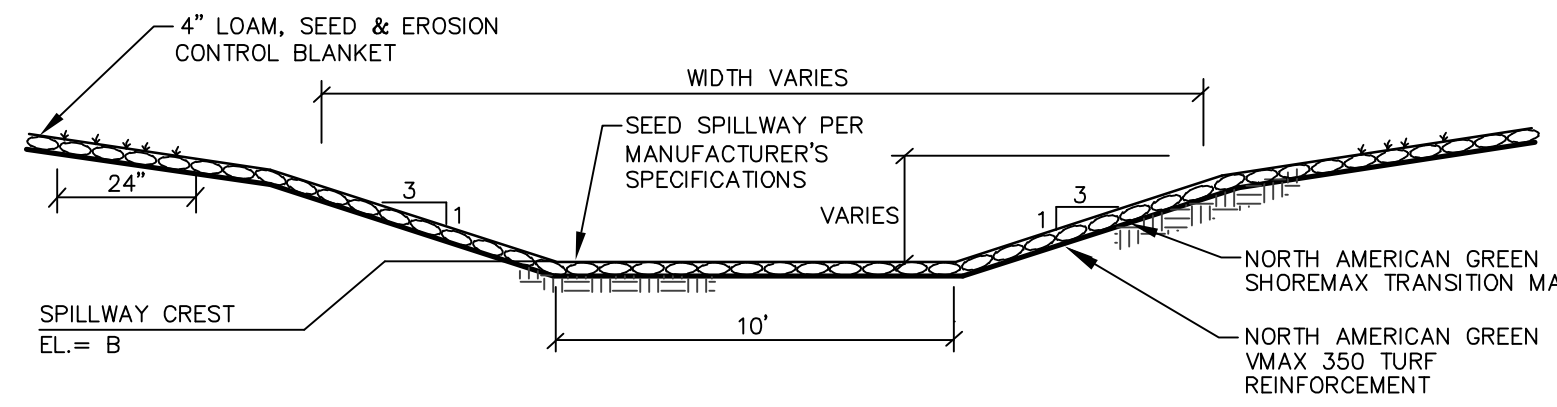
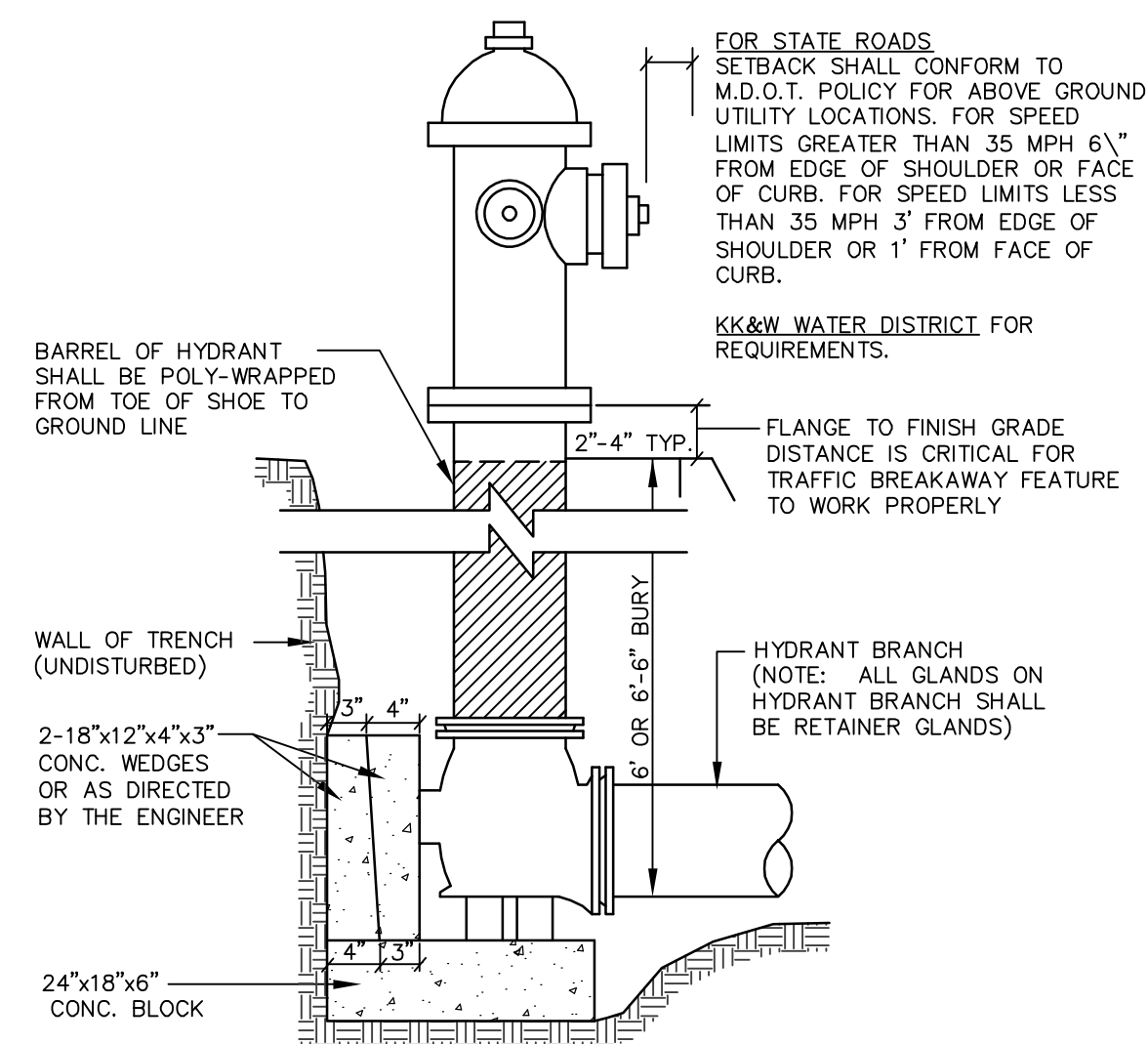


- EMBANKMENT CONSTRUCTION**
- CONSTRUCTION OF COMMON BORROW MATERIAL MEETING M.D.O.T. SPECIFICATION.
  - PLACE BORROW MATERIAL IN 12" LIFTS, COMPACTED TO 95% OF MAXIMUM DRY DENSITY.
  - EROSION CONTROL MESH WHERE SPECIFIED ON PLANS.
  - LOAM, SEED, AND STABILIZE IN ACCORDANCE WITH SEDIMENTATION AND EROSION CONTROL PLAN.

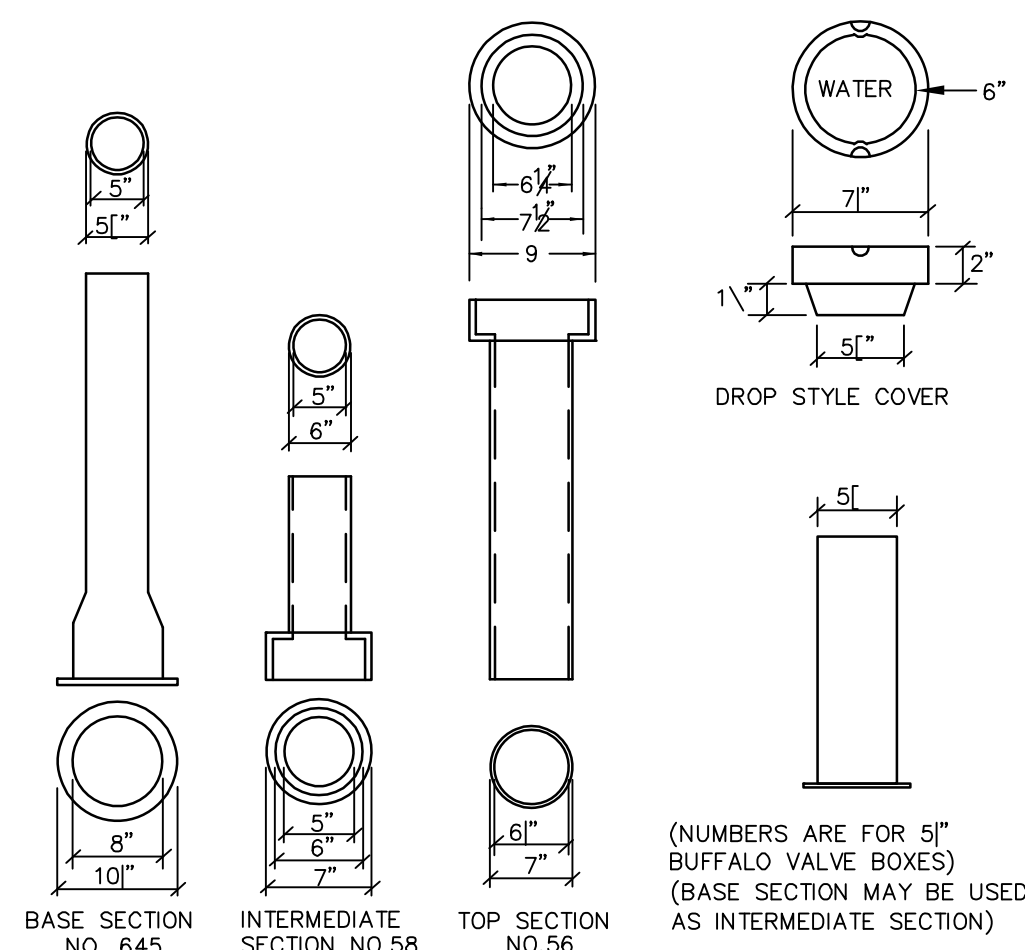
**1 SPILLWAY SECTION**  
NOT TO SCALE



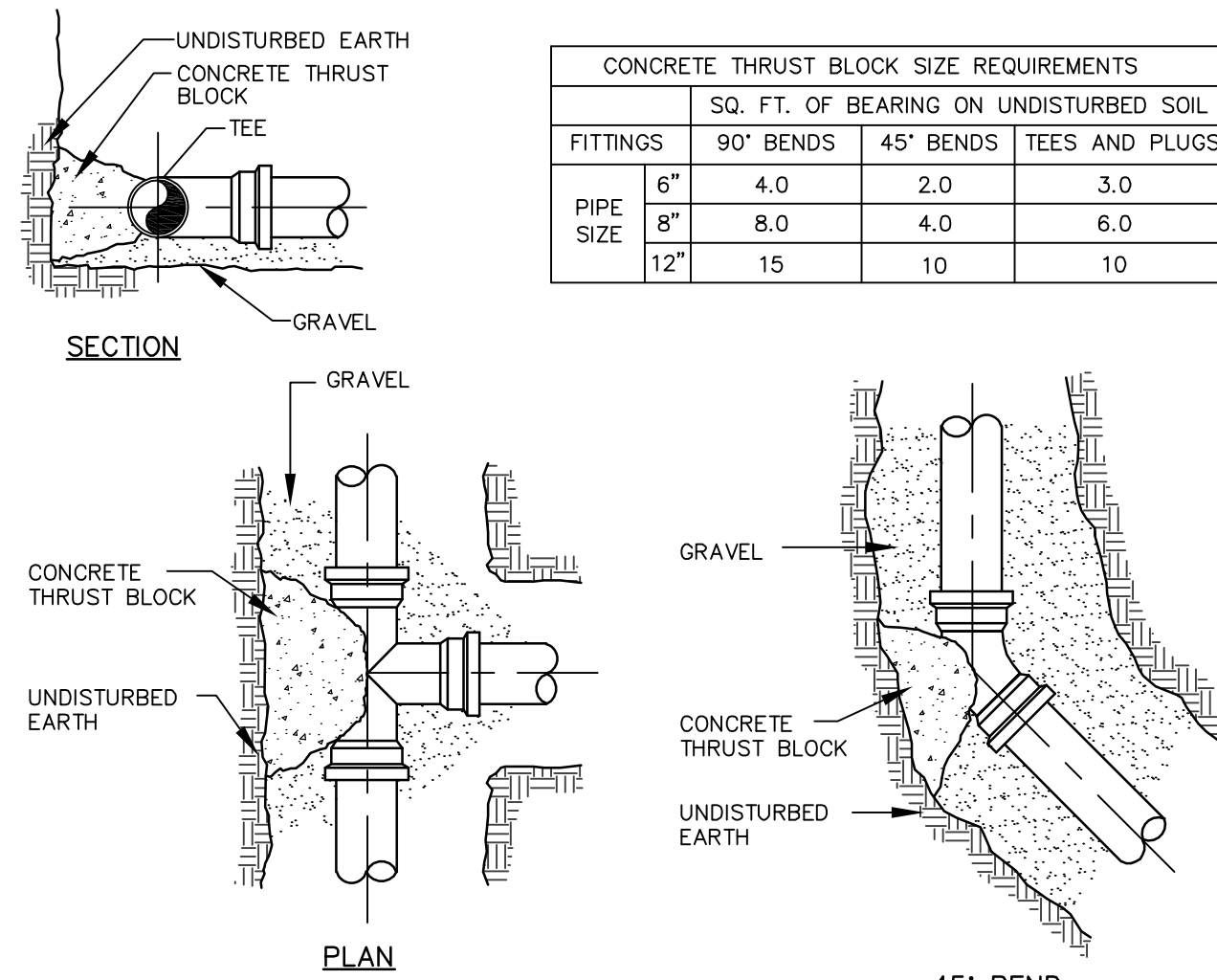
**2 EMERGENCY SPILLWAY CROSS-SECTION**  
NOT TO SCALE



**3 TYPICAL HYDRANT INSTALLATION**  
NOT TO SCALE

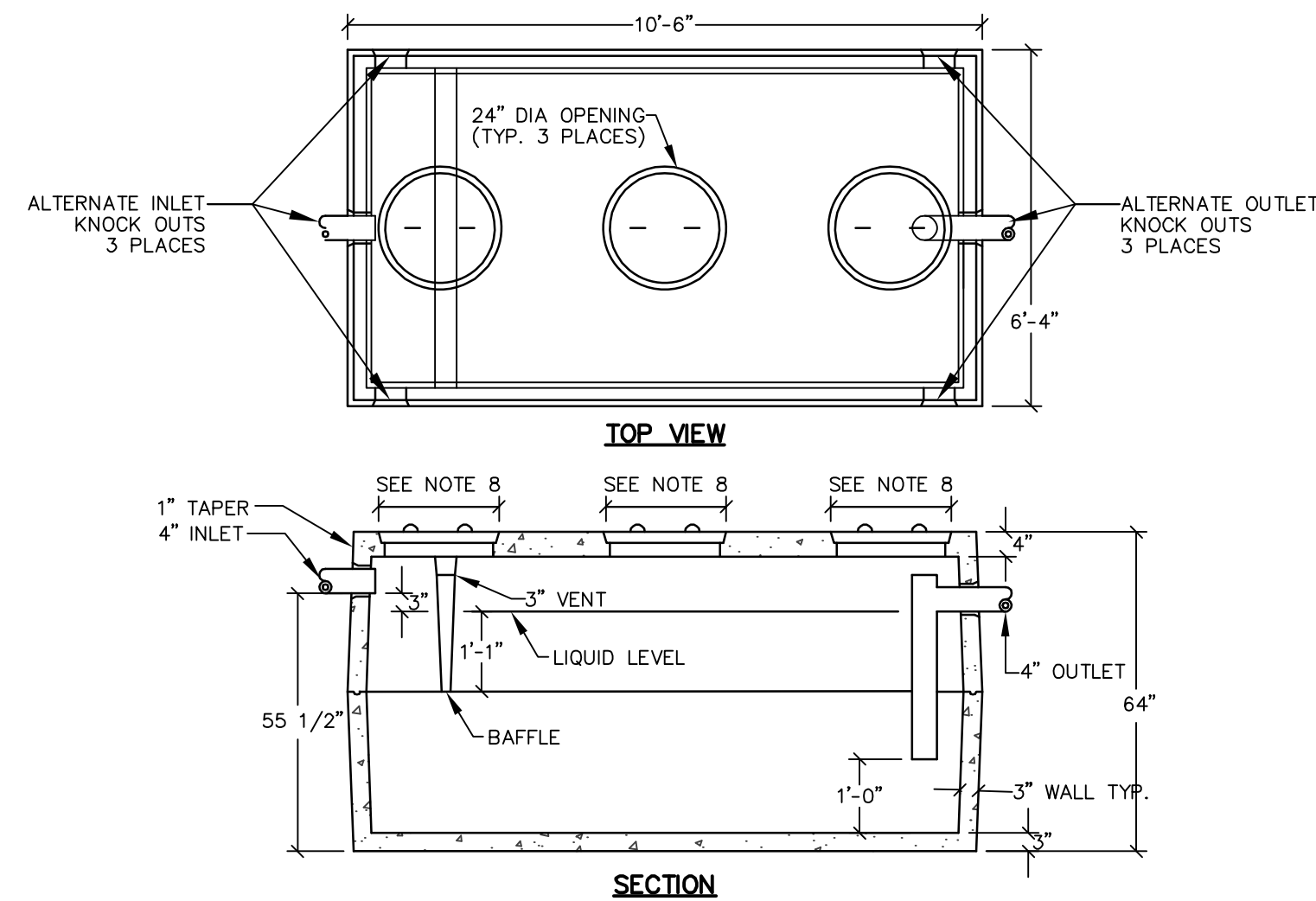


**4 VALVE BOX & COVER**  
NOT TO SCALE



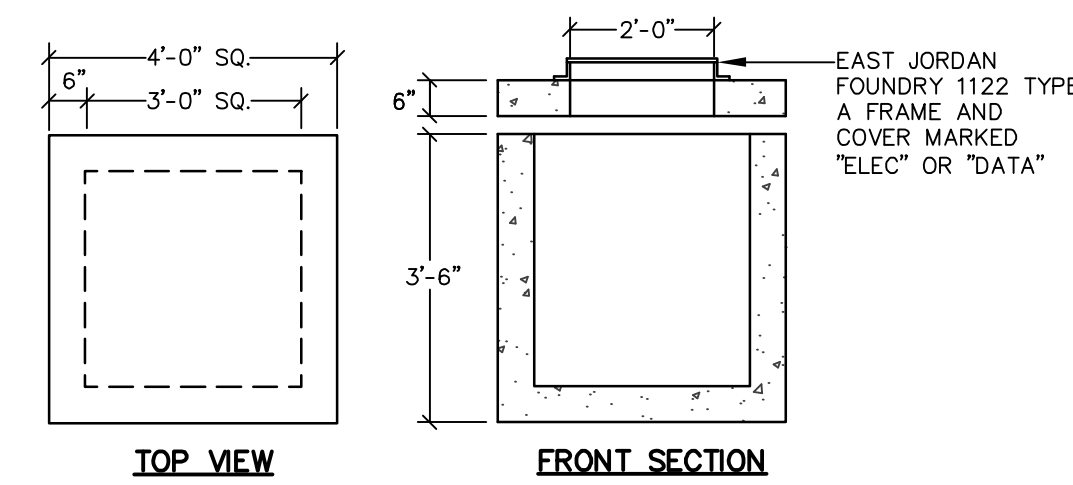
**5 WATER TEE & BEND DETAIL**  
NOT TO SCALE

FITTINGS	CONCRETE THRUST BLOCK SIZE REQUIREMENTS			
	SQ. FT. OF BEARING ON UNDISTURBED SOIL	90° BENDS	45° BENDS	TEES AND PLUGS
PIPE SIZE	6"	4.0	2.0	3.0
	8"	8.0	4.0	6.0
	12"	15	10	10



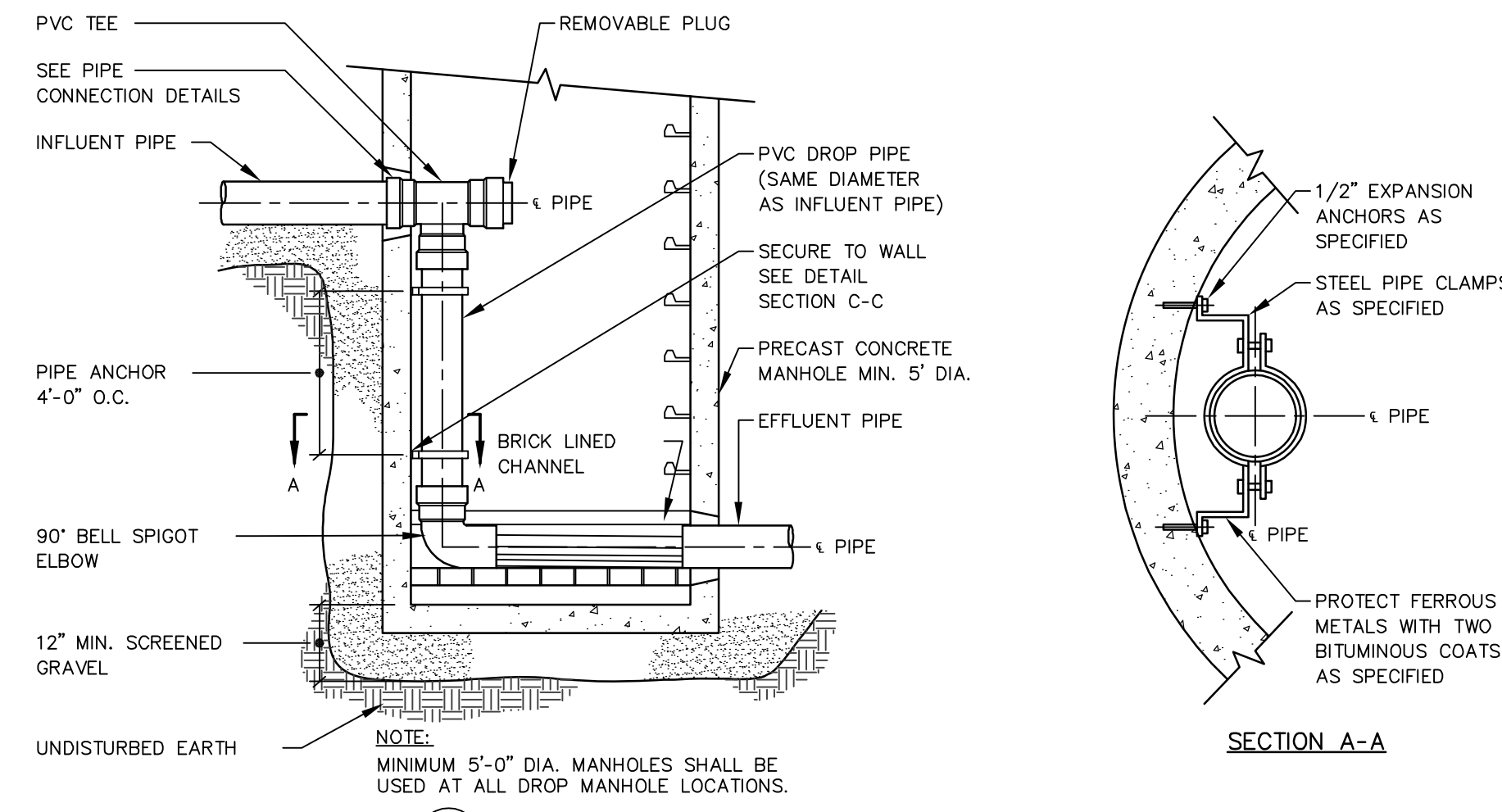
- NOTES:**
- STRUCTURE SHALL BE 1,500 GALLON GREASE TRAP AS MANUFACTURED BY PRECAST CONCRETE PRODUCTS OF MAINE, INC. (ITEM #8-904) OR APPROVED EQUAL.
  - CONCRETE 4000 PSI AT 28 DAYS.
  - INLET BAFFLE IS PRECAST AS ONE UNIT WITH THE TOP SECTION OF THE SEPTIC TANK.
  - TANKS REINFORCED WITH 6X6X10 G.A. WIRE.
  - KEYED JOINTS SEALED WITH ASPHALT SEALANT.
  - HEAVY DUTY SEPTIC TANK TOPS REINFORCED WITH 1/2" REBAR ON 6" CENTERS EACH WAY.
  - GREASE FILTER AVAILABLE.
  - PROVIDE PRECAST SECTIONS AND EAST JORDAN FOUNDRY 1122 TYPE A FRAME AND COVER MARKED "SEWER"

**6 1,500 GALLON GREASE TRAP**  
NOT TO SCALE

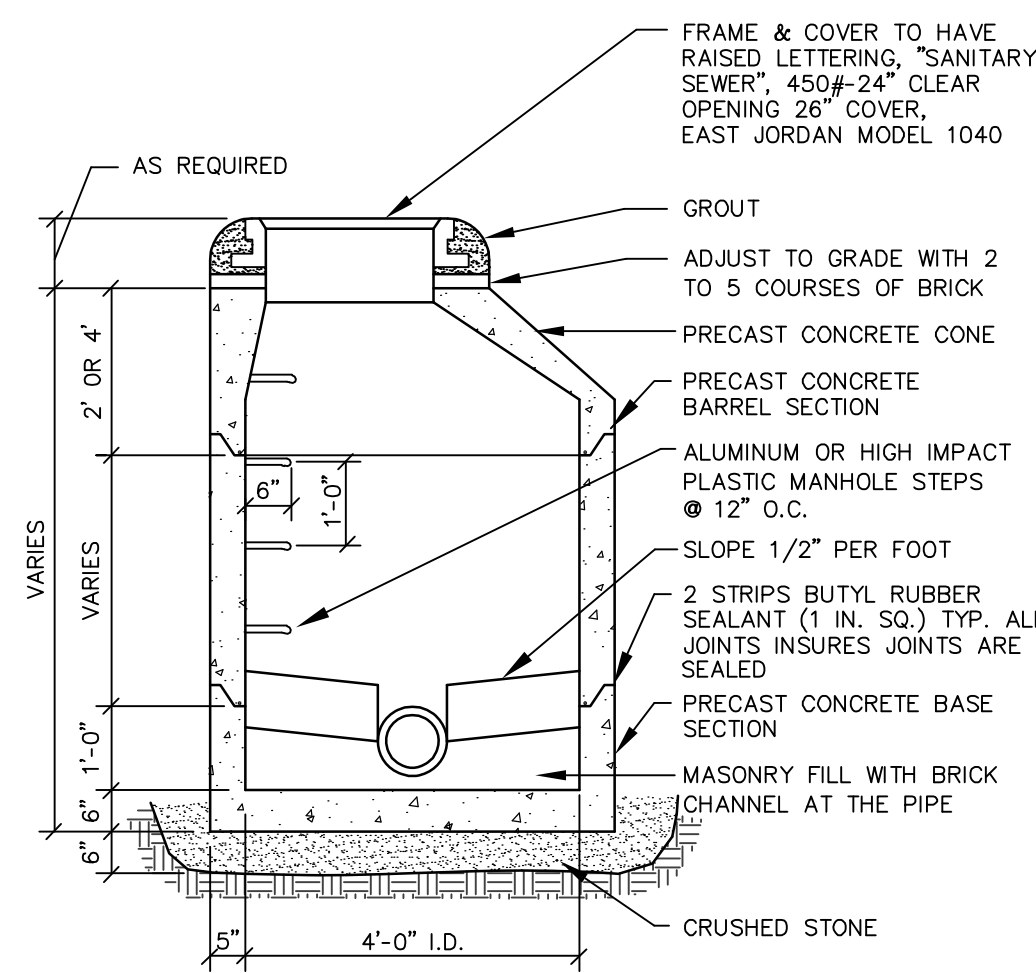


- NOTES:**
- STRUCTURE SHALL BE 3" SQ. UTILITY BOX WITH 6" WALLS AS MANUFACTURED BY PRECAST CONCRETE PRODUCTS OF MAINE, INC. (ITEM #B-14) OR APPROVED EQUAL.
  - CONCRETE 4000 PSI AT 28 DAYS.
  - STRUCTURE TO BE H-20 LOADED.
  - OPENINGS AS NEEDED.

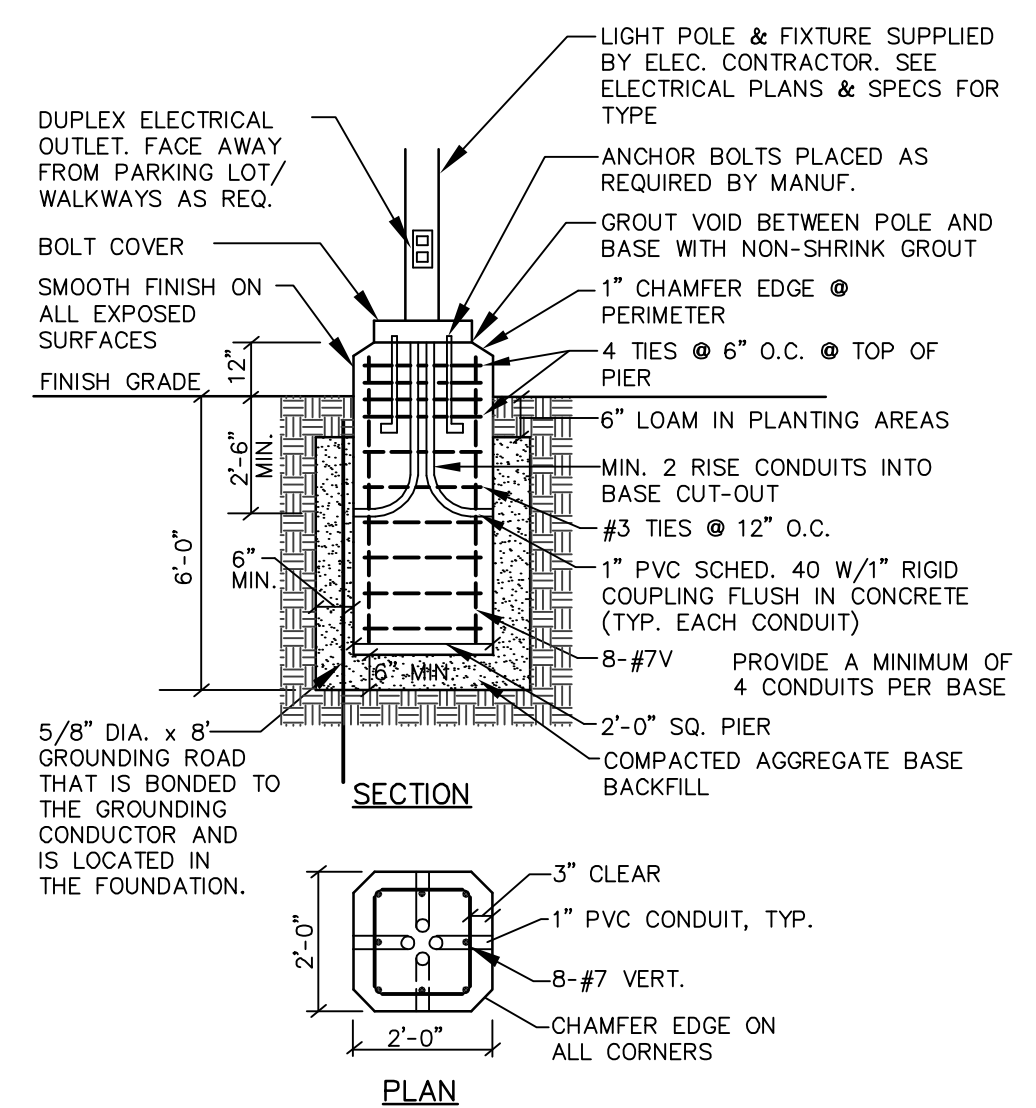
**7 UTILITY PULL BOX**  
NOT TO SCALE



**8 PVC DROP CONNECTION (INTERNAL)**  
NOT TO SCALE

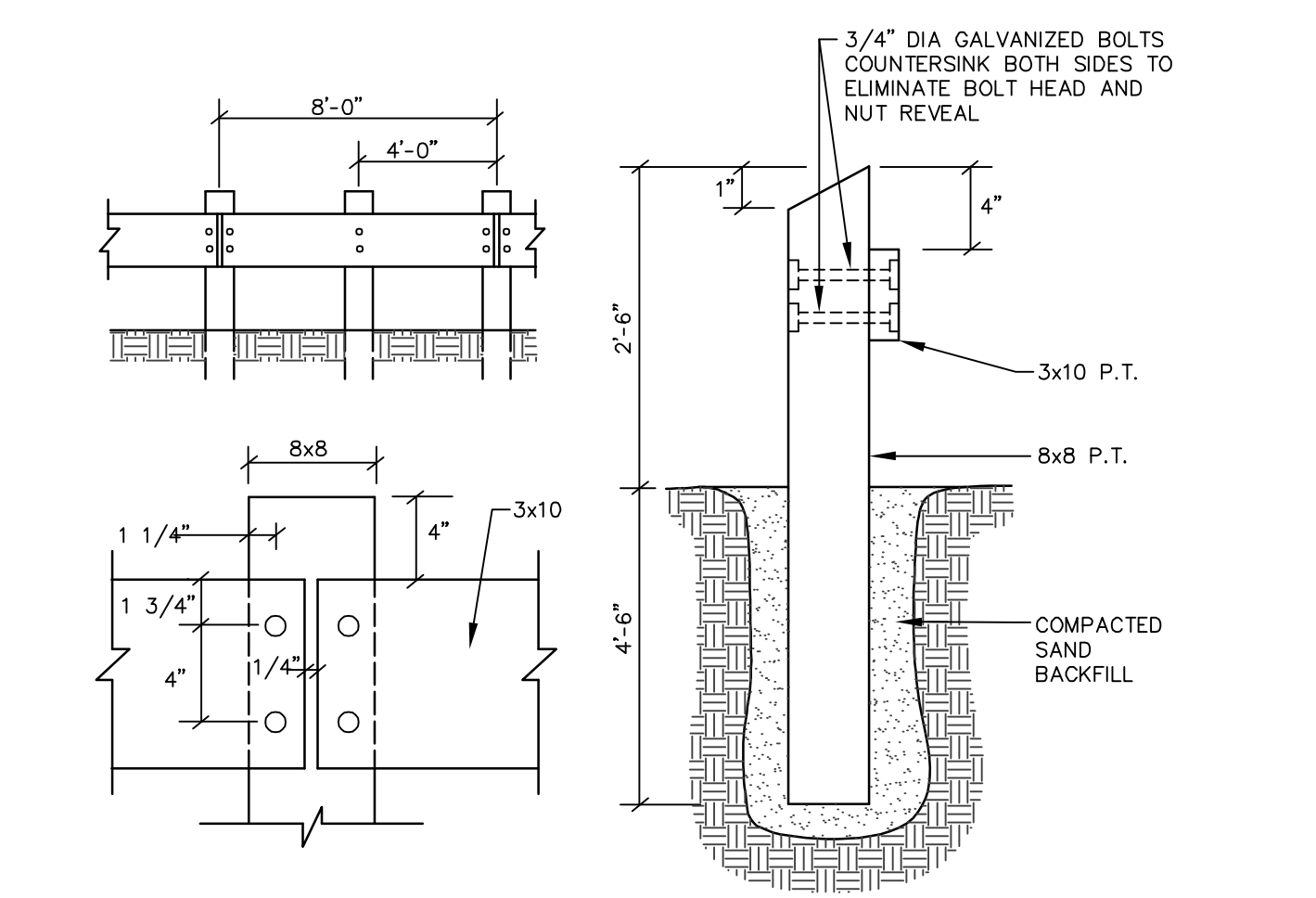


**9 PRECAST MANHOLE**  
NOT TO SCALE

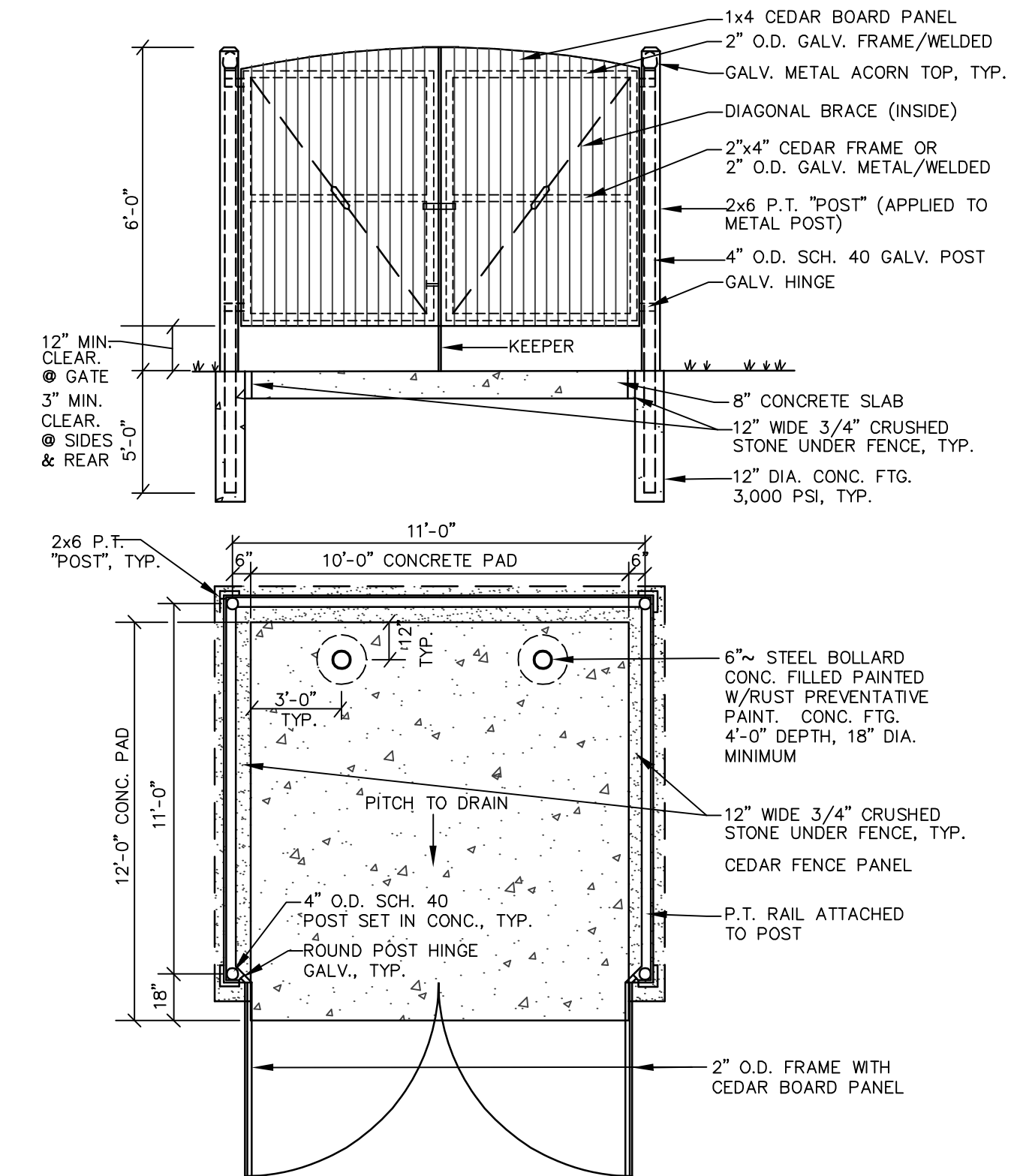


- NOTES:**
- CONCRETE f<sub>c</sub>=4000 psi.
  - REIN. STEEL GRADE 60 NEW BARS.
  - CONCRETE 3/4" AGG., 6 +/- 1% ENTRAINED AIR.
  - PROVIDE 2 COATS BITUMINOUS DAMPROOFING FOR ALL CONCRETE BELOW GRADE.
  - INSTALL BASE 3'-0" ABOVE FINISH GRADE IN LOCATIONS WHERE POLES ARE IN PARKING LOT PAVEMENT.
  - BID ALT. CONTRACTOR MAY SUBSTITUTE PRECAST CONCRETE LIGHT POLE BASE EQUAL TO ABOVE SPEC.

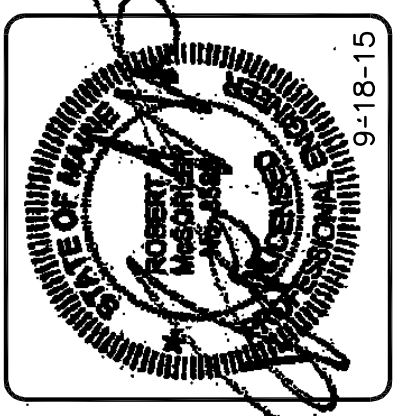
**10 LIGHT POLE BASE**  
NOT TO SCALE



**11 PRESSURE TREATED WOOD GUARDRAIL**  
NOT TO SCALE



**12 TYPICAL DUMPSTER ENCLOSURE**  
NOT TO SCALE



DESIGNED	CHECKED
PDO	RAM

A: RAM 9-18-15 PLAN SUBMISSION TO CITY OF PORTLAND  
 REV. BY: DATE: STATUS:  
 THIS PLAN SHALL NOT BE MODIFIED WITHOUT WRITTEN PERMISSION FROM SEBAGO TECHNICS, INC. ANY ALTERATIONS AUTHORIZED OR OTHERWISE, SHALL BE AT THE USER'S SOLE RISK AND WITHOUT LIABILITY TO SEBAGO TECHNICS, INC.

**SEBAGO TECHNICS**  
 WWW.SEBAGO TECHNICS.COM  
 75 John Roberts Rd., Suite 1A  
 South Portland, ME 04106  
 Tel. 207-200-9100 Fax 207-783-5656

**DETAILS OF:** PORTLAND RETIREMENT RESIDENCE  
 802 OCEAN AVENUE  
 PORTLAND, ME  
**FOR:** HAWTHORN DEVELOPMENT GROUP, LLC  
 9310 NE VANCOUVER WALL DR., STE200  
 VANCOUVER, WA 98662-8210

PROJECT NO.	SCALE
14432	NTS

SHEET 12 OF 14