

SPRINKLER SYSTEM NOTES

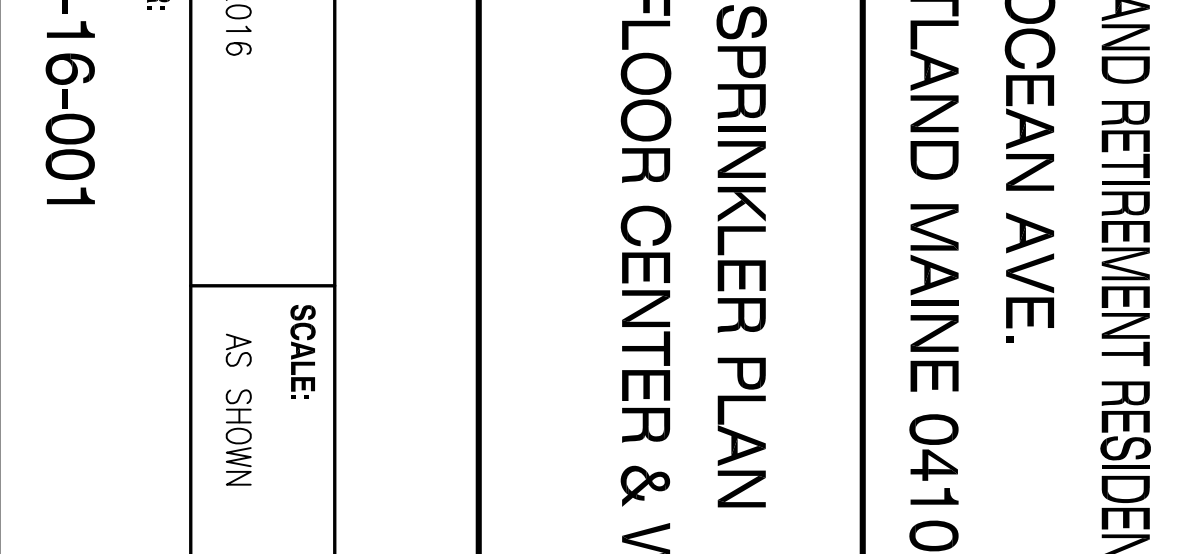
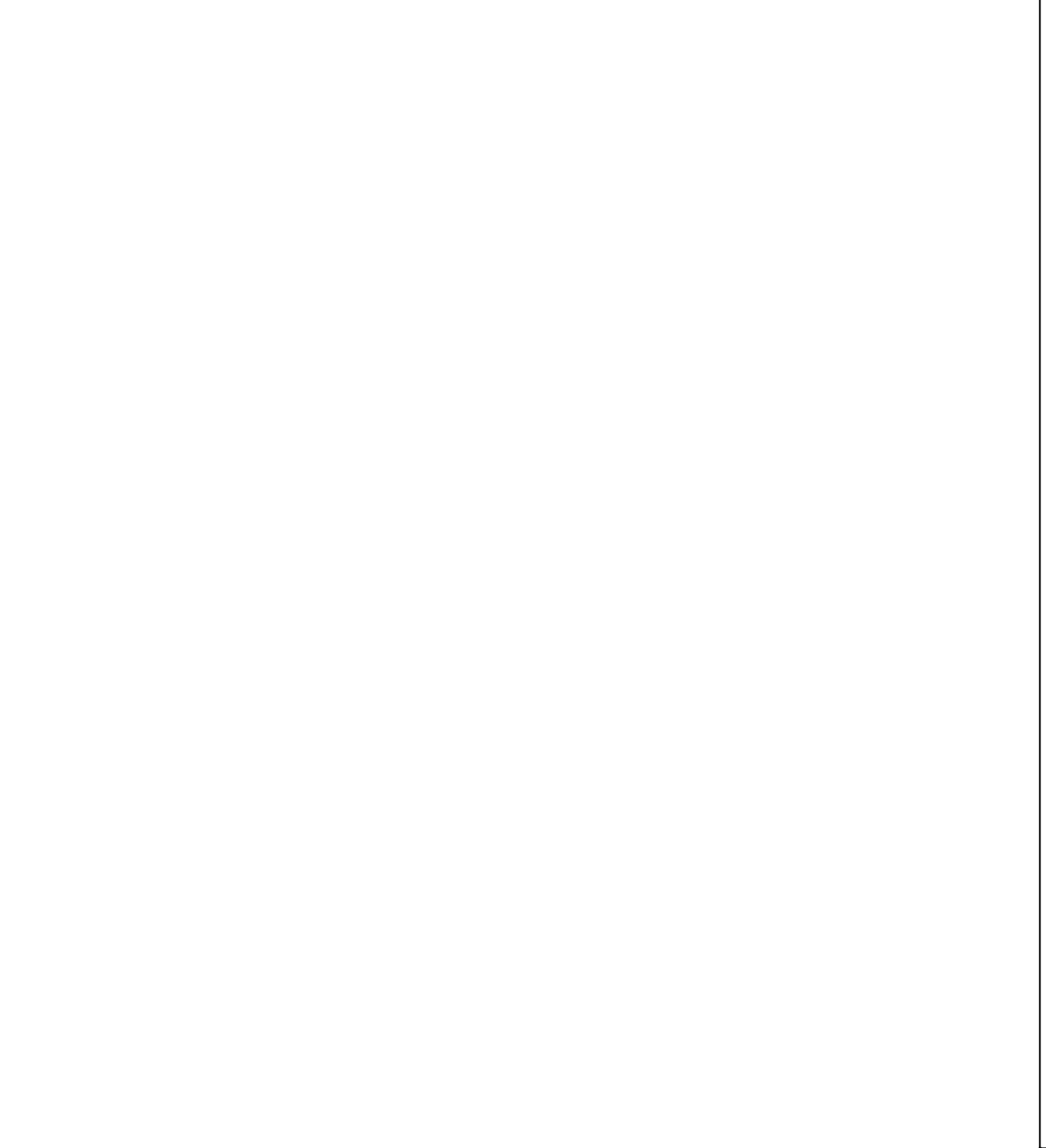
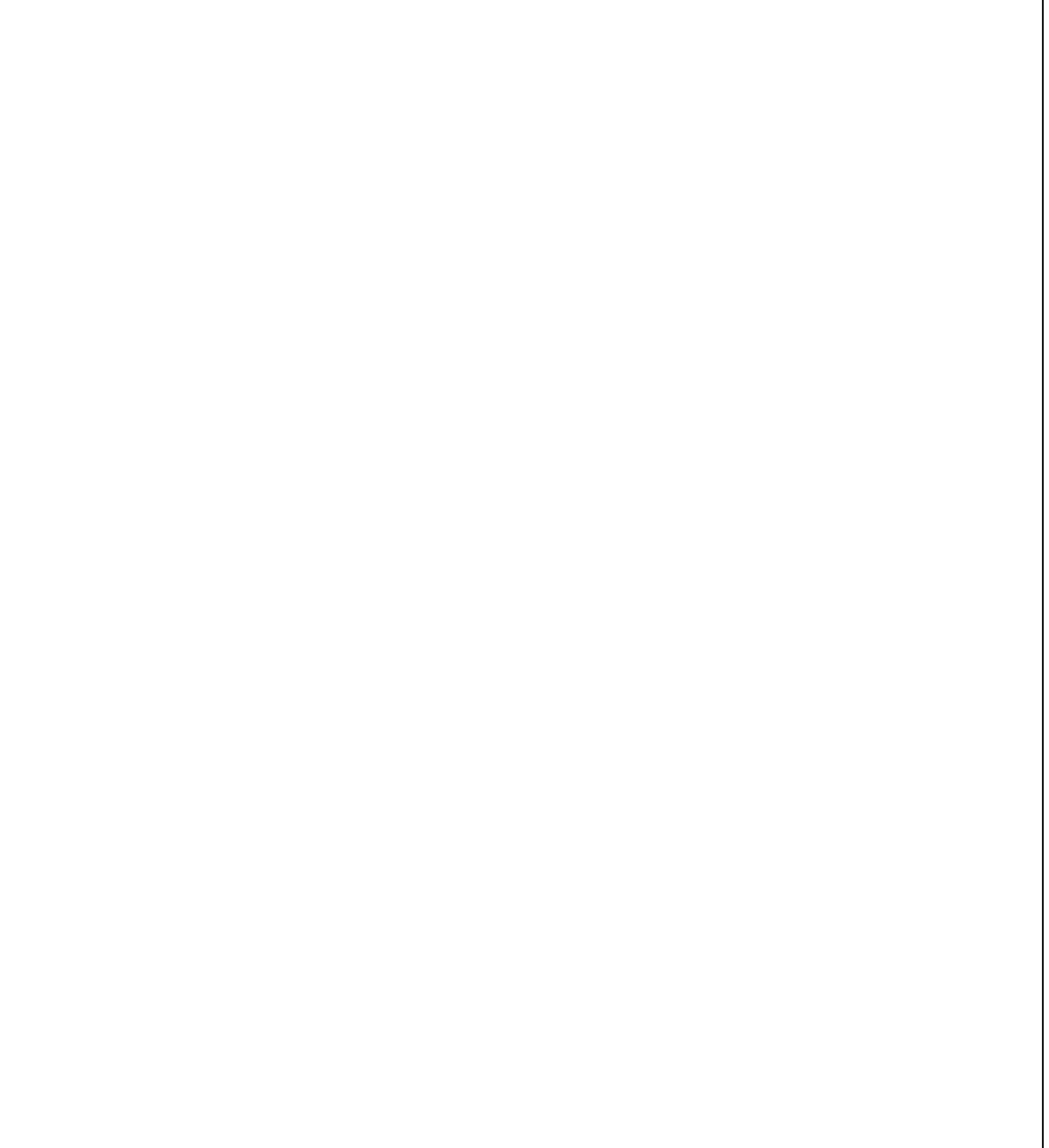
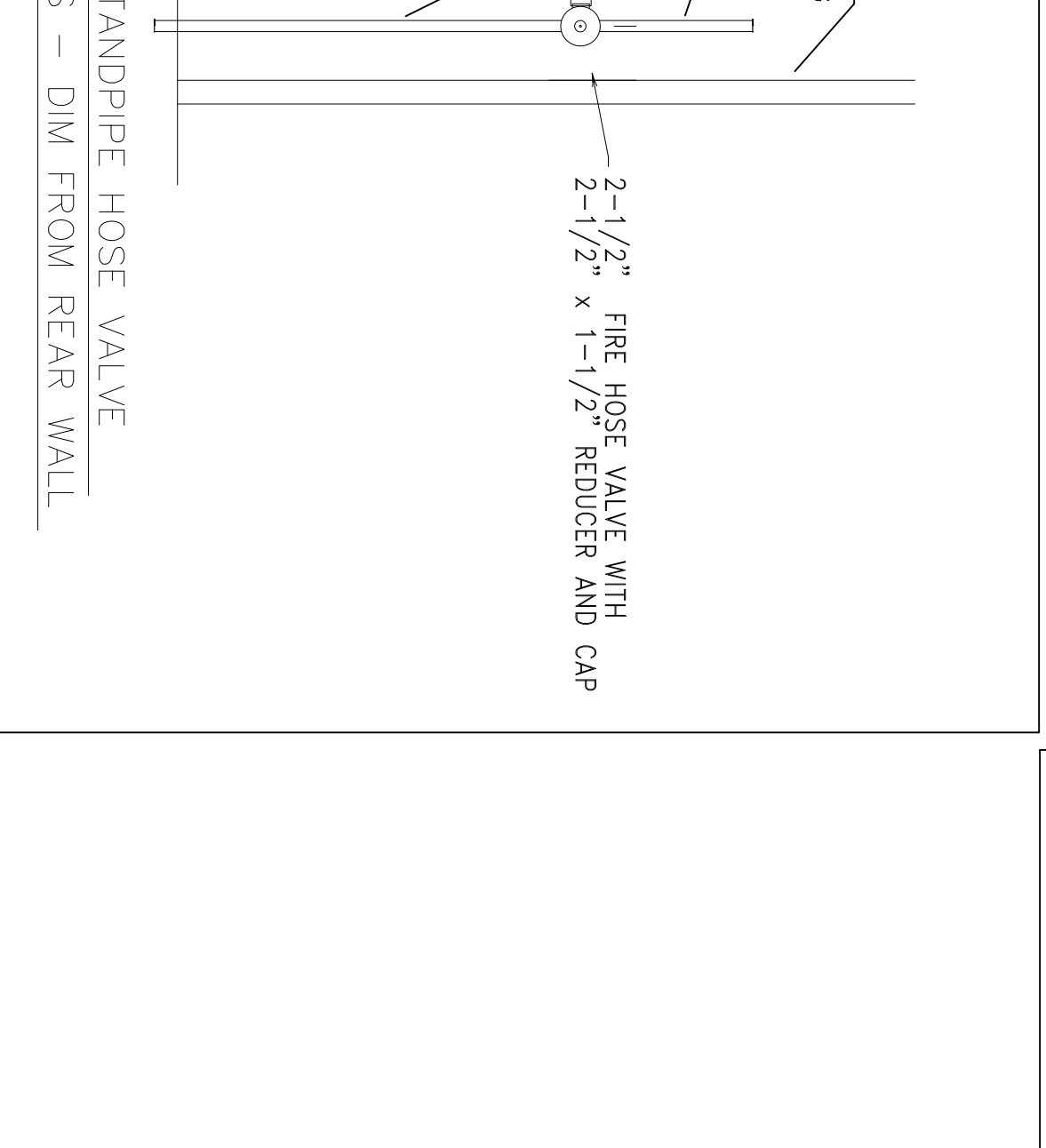
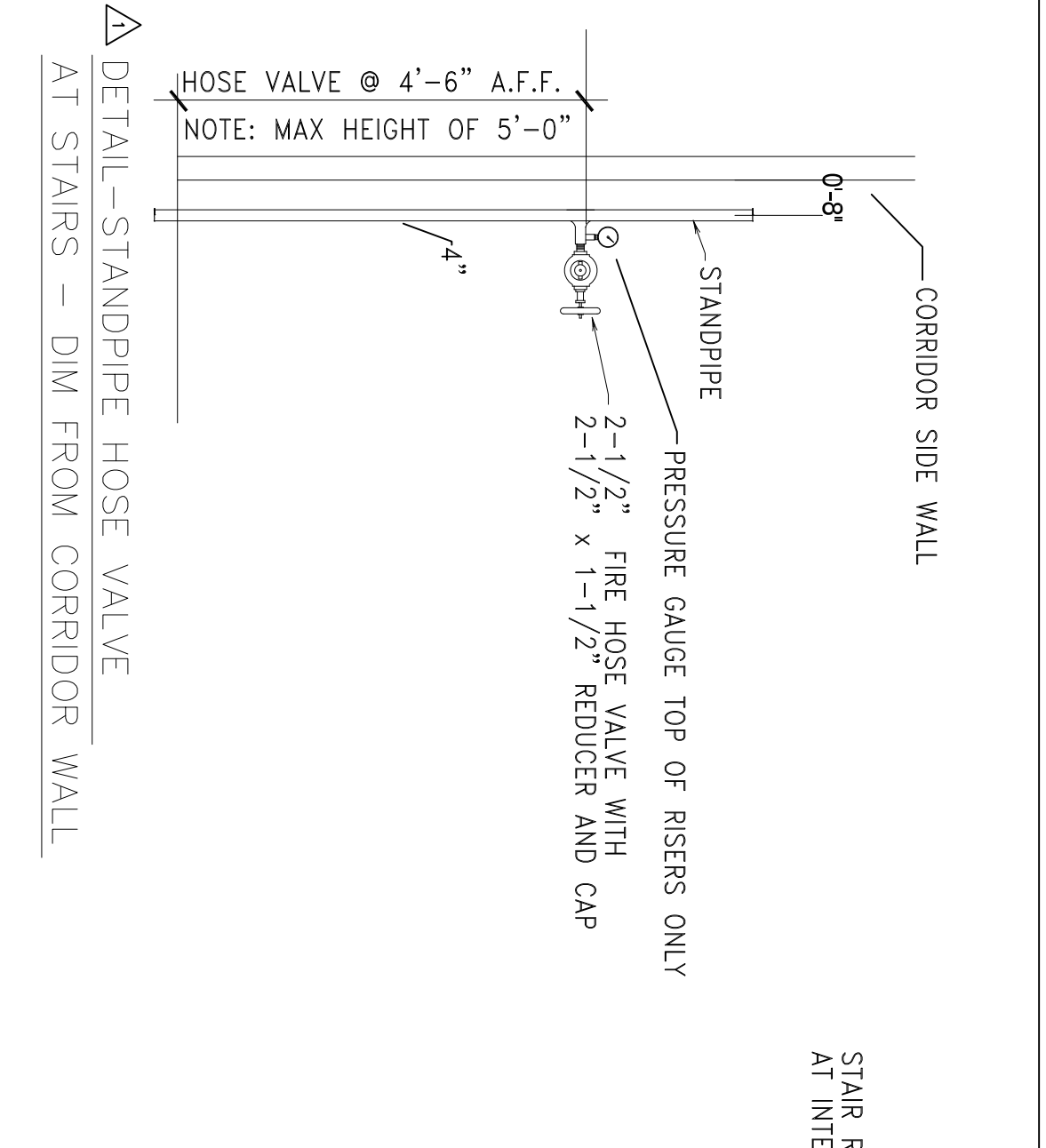
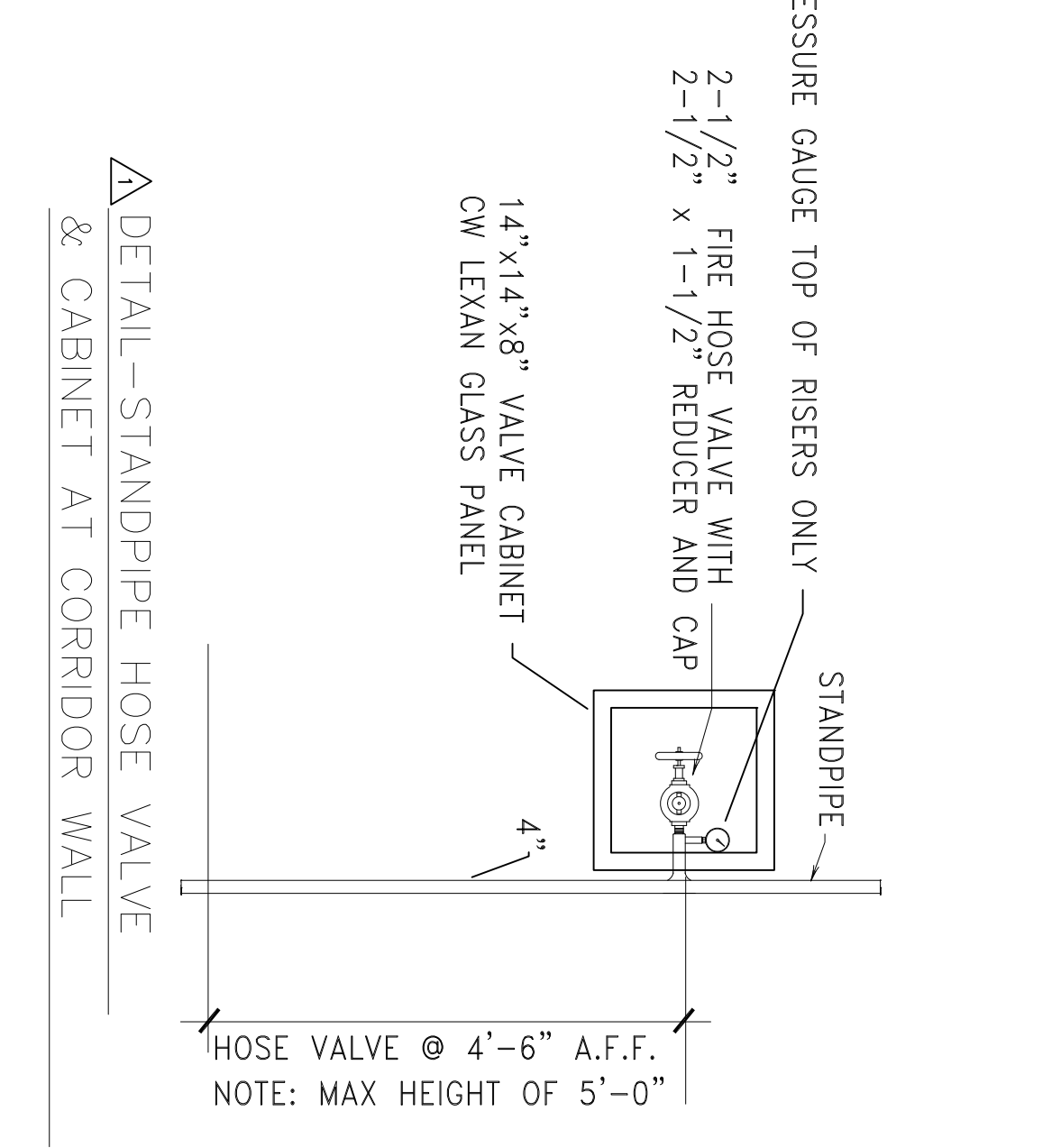
- 1) SCOPE OF WORK: INSTALLATION OF A 100 USPWH/SPRINT AUTOMATIC DRY PIPE SYSTEM TO INCLUDE SPRINKLERS IN A WET SYSTEM & 2 1/2\"/>

CURE TIMES WITH ONE STEP SOLVENT CEMENT
200 PSI (MAXIMUM) TEST PRESSURE

PIPE SIZE	60°F to 100°F	40°F to 60°F	10°F to 40°F
3/4"	45 min.	1.5 hr.	2.4 hr.
1"	45 min.	1.5 hr.	2.4 hr.
1 1/4"	1.5 hr.	1.6 hr.	1.8 hr.
1 1/2"	1.5 hr.	1.6 hr.	1.8 hr.
2"	6 hr.	36 hr.	See Note 1
2 1/2"	8 hr.	72 hr.	See Note 1
3"			

BLAZEMASTER PIPING
RECOMMENDED PRACTICES AND PRECAUTIONS
DO'S AND DON'TS

- DO'S**
- INSTALL PRODUCT ACCORDING TO THE MANUFACTURER'S INSTALLATION INSTRUCTIONS AND ALL APPLICABLE NATIONAL AND LOCAL CODES.
 - FOLLOW RECOMMENDED SAFE WORK PRACTICES.
 - MAKE CERTAIN THAT THREAD SEALANTS, GASKET LUBRICANTS, OR FIRE STOP MATERIALS ARE COMPATIBLE WITH BLAZEMASTER CPVC PIPE AND FITTINGS.
 - USE ONLY LATEX-BASED PAINTS IF PAINTING IS DESIRED.
 - COVER PIPE AND FITTINGS WITH AN OPAQUE TAPE IF STORED OUTDOORS.
 - FOLLOW PROPER HANDLING PROCEDURES.
 - USE TOOLS SPECIFICALLY DESIGNED FOR USE WITH PLASTIC PIPE AND FITTINGS.
 - USE PROPER SOLVENT CEMENT AND FOLLOW APPLICATION INSTRUCTIONS.
 - USE A DROP CLOTH TO PROTECT INTERIOR FINISHES.
 - DEBUR AND BEVEL THE PIPE END BEFORE SOLVENT CEMENTING.
 - ROTATE THE PIPE ONE EIGHTH TO ONE QUARTER TURN WHEN BOTTOMING PIPE IN FITTING SOCKET.
 - AVOID PUDDLING OF SOLVENT CEMENT IN FITTINGS AND PIPE.
 - MAKE CERTAIN THAT SOLVENT CEMENT DOES NOT RUN AND PLUG THE FITTING.
 - SPRINKLER HEADS SHOULD BE RECOMMENDED CURE TIMES PRIOR TO PRESSURE TESTING.
 - FILL LINES SLOWLY AND BLEED THE AIR FROM THE SYSTEM PRIOR TO PRESSURE TESTING.
 - SUPPORT SPRINKLER HEAD PROPERLY TO PREVENT LIFT UP OF THE HEAD THROUGH THE CEILING WHEN ACTIVATED.
 - INSTALL BLAZEMASTER CPVC IN WET FIRE SPRINKLER SYSTEMS ONLY.
 - USE ONLY INSULATION AND/OR GLYCERIN AND WATER SOLUTIONS FOR FREEZE PROTECTION.
 - ALLOW FOR MOVEMENT DUE TO EXPANSION AND CONTRACTION.
 - RENEW YOUR BLAZEMASTER CPVC FIRE SPRINKLER INSTALLATION TRAINING EVERY TWO YEARS.
- DON'TS**
- DO NOT USE EMULSIF OILS SUCH AS GRISOL, AS A GASKET LUBRICANT.
 - DO NOT USE ETHYLENE GLYCOL OR SOLVENT-BASED PAINTS, SEALANTS, LUBRICANTS, OR FIRE STOP MATERIALS.
 - DO NOT USE ANY ALCOHOL-BASED SOLUTIONS AS AN ANTI-FREEZE.
 - DO NOT MIX GLYCERIN AND WATER SOLUTIONS IN CONTAMINATED CONTAINERS.
 - DO NOT USE BOTH TETON TAPE AND THREAD SEALANTS.
 - DO NOT USE SOLVENT CEMENT THAT EXCEEDS ITS SHELF LIFE OR HAS BECOME DISCOLORED OR GELLED.
 - DO NOT ALLOW SOLVENT CEMENT TO PLUG THE SPRINKLER HEAD ORIFICE.
 - DO NOT CONNECT RIGID METAL COUPLERS TO BLAZEMASTER GROOVED ADAPTERS, TEE, WROTE OR DRILL BLAZEMASTER CPVC PIPE.
 - DO NOT THERMO WELD OR BURN BLAZEMASTER CPVC PIPE.
 - DO NOT USE SOLVENT CEMENT NEAR SOURCES OF HEAT, OPEN FLAME, OR WHEN SMOKING.
 - DO NOT USE DULL OR BROKEN CUTTING TOOL BLADES WHEN CUTTING BLAZEMASTER PIPE.
 - DO NOT USE BLAZEMASTER CPVC PIPE THAT HAS BEEN STORED OUTDOORS UNPROTECTED AND IS FROZEN IN COLOR.
 - DO NOT INSTALL BLAZEMASTER CPVC PIPE IN CONTACT WITH THE PIPE WITHOUT ALLOWING FOR EXPANSION.
 - DO NOT INSTALL BLAZEMASTER CPVC PIPE AND FITTINGS IN COLD WEATHER.
 - DO NOT INSTALL BLAZEMASTER CPVC PIPE AND FITTINGS IN DRY SYSTEMS.
 - DO NOT PRESSURE TEST WITH AIR OR COMPRESSED GAS.
- NOTE: THIS LIST DOES NOT CONSTITUTE A COMPLETE INSTALLATION GUIDE



SPRINKLER SYMBOL DESCRIPTION						
SYMBOL	SIZE	K/KFC	MAKE	PART#	RESPONSE	QTY
STYLE	F	MODEL	FINISH	COMMENTS		

7 THORNDIKE DRIVE
FRIELAND ACADEMY
PORTLAND, ME 04103
PHONE: (207) 850-2433
FAX: (207) 850-2434

EDGE
FIRE PROTECTION
FRONTLINE DEFENSE

PORTLAND RETIREMENT RESIDENCE
802 OCEAN AVE.
PORTLAND MAINE 04103

SHEET TITLE:
FIRE SPRINKLER PLAN
1ST FLOOR CENTER & WEST

DATE: DEC 14 2016
SCALE: AS SHOWN

JOB NUMBER: MEC-16-001

SHEET NUMBER: FP 1 OF 9