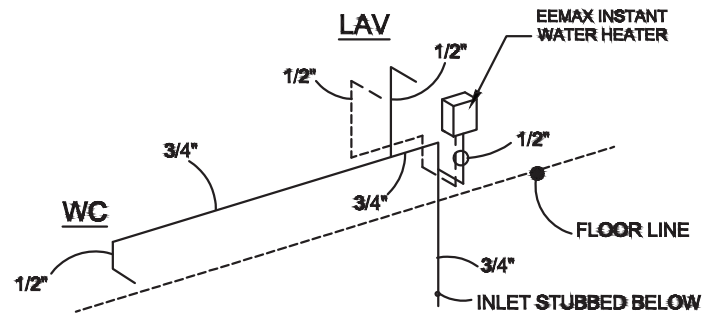


DWV RISERS
NTS

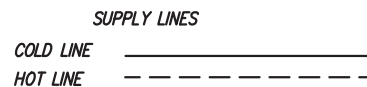
Change in direction in Schedule 40 DWV -PVC and ABS drainage piping shall be made by the appropriate use of 45° (0.785 rad) wyes, quarter bends or long sweep quarter bends, one-sixth, one-eighth, one-sixteenth bends, or by a combination of these or equivalent fittings. Single and double sanitary tees and quarter bends may be used in drainage lines only where the direction of flow is from the horizontal to the vertical.

Short sweeps not less than 3 inches diameter may be used in soil and waste lines where the change in direction of flow is from the horizontal to the vertical and may be for making necessary offsets between the ceiling and the next floor above.



WATER SUPPLY
NTS

ALL STUB UPS 1/2" MINIMUM
SIZING BASED ON INLET PRESSURE BETWEEN 50 TO 60 PSI



STANDARD 6.5 EEMAX WITH RESTROOM

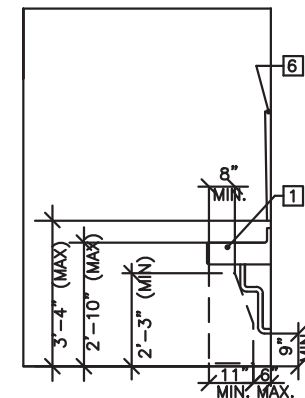
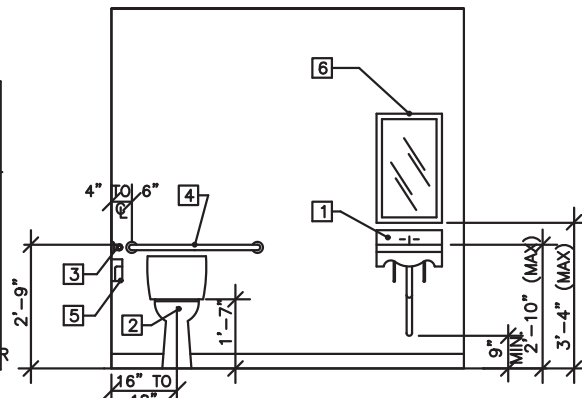
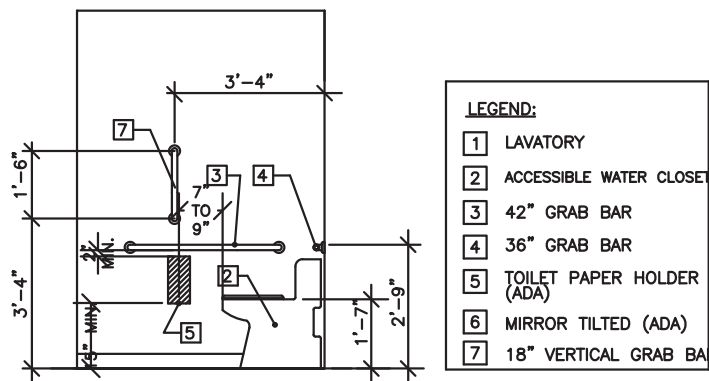
ELECTRICAL SCHEDULE			
CIRCUIT	NOMENCLATURE	BREAKER (AMPS)	WIRE (C.U.)
1/3	HVAC	60 A (2P) HACR TYPE	6-2 SE W/10 GND
8/10	W/H	30 A (2P)	10-2 NM
2,4,5,6	LIGHTS, FANS, AND RECEPTACLES	20 A	12-2 NM
ELECTRICAL PANEL SIZING			
DESCRIPTION	SUBPANEL	KVA	
GENERAL LIGHTING			
.0035 KW/SF X 431 SF X 1.25=		1.89	
.12 RECEPTS AT 180V/1000=		2.16	
WATER HEATERS		6.50	
.02 FANS AT .3 KW X 1.25=		0.75	
HVAC		10.75	
OTHER J BOX		---	
TOTAL		22.05	
TOTAL/240 X 1000=		91.9	
INSTALL		100 AMP PANEL	
120/240 V 1φ			

DRY UNIT

ELECTRICAL SCHEDULE			
CIRCUIT	NOMENCLATURE	BREAKER (AMPS)	WIRE (C.U.)
1/3	HVAC	60 A (2P) HACR TYPE	6-2 SE W/10 GND
---	W/H	30 A (2P)	10-2 NM
2,4,5,6	LIGHTS, FANS, AND RECEPTACLES	20 A	12-2 NM
ELECTRICAL PANEL SIZING			
DESCRIPTION	SUBPANEL	KVA	
GENERAL LIGHTING			
.0035 KW/SF X 431 SF X 1.25=		1.89	
.13 RECEPTS AT 180V/1000=		2.34	
WATER HEATERS		6.50	
.01 FANS AT .3 KW X 1.25=		0.38	
HVAC		10.75	
OTHER J BOX		---	
TOTAL		15.36	
TOTAL/240 X 1000=		64.00	
INSTALL		100 AMP PANEL	
120/240 V 1φ			

WIDE OPEN UNIT

ELECTRICAL SCHEDULE			
CIRCUIT	NOMENCLATURE	BREAKER (AMPS)	WIRE (C.U.)
1/3	HVAC	60 A (2P) HACR TYPE	6-2 SE W/10 GND
---	W/H	30 A (2P)	10-2 NM
2,5,6,7	LIGHTS, FANS, AND RECEPTACLES	20 A	12-2 NM
4	OPEN		
ELECTRICAL PANEL SIZING			
DESCRIPTION	SUBPANEL	KVA	
GENERAL LIGHTING			
.0035 KW/SF X 431 SF X 1.25=		1.89	
.10 RECEPTS AT 180V/1000=		1.80	
WATER HEATERS		6.50	
.01 FANS AT .3 KW X 1.25=		0.38	
HVAC		10.75	
OTHER J BOX		---	
TOTAL		14.82	
TOTAL/240 X 1000=		61.80	
INSTALL		100 AMP PANEL	
120/240 V 1φ			



[3] ADDITION BLOCKING REQUIRED IN WALL FOR 42" GRAB BAR @ 1'-0" C AND 4'-6" C OFF OF WALL, 2'-8" A.F.F.

[4] ADDITION BLOCKING REQUIRED IN WALL FOR 36" GRAB BAR @ 4" TO 6" C AND 4'-0" C OFF OF WALL, 2'-8" A.F.F.

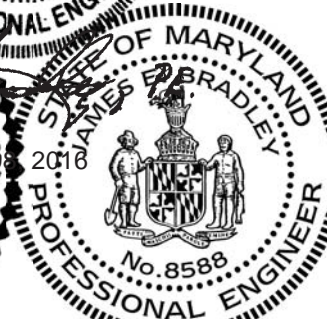
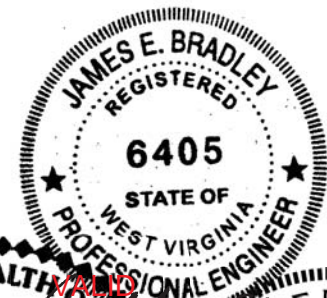
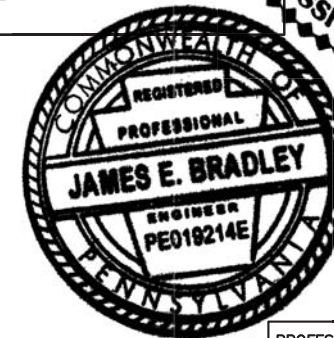
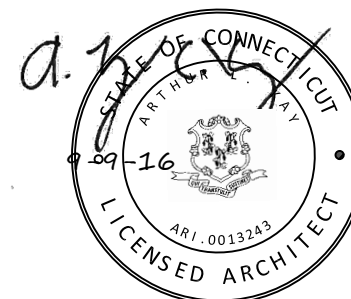
[3] ADDITION BLOCKING REQUIRED IN WALL FOR 42" GRAB BAR @ 1'-0" C AND 4'-6" C OFF OF WALL, 2'-8" A.F.F.

[4] ADDITION BLOCKING REQUIRED IN WALL FOR 36" GRAB BAR @ 4" TO 6" C AND 4'-0" C OFF OF WALL, 2'-8" A.F.F.

INTERIOR ELEVATIONS - (RESTROOM LAYOUT)



APPROVED
09 09 2016



PROFESSIONAL CERTIFICATION:
I HEREBY CERTIFY THAT THESE DOCUMENTS WERE PREPARED OR APPROVED BY ME, AND THAT I AM A DULY LICENSED PROFESSIONAL ENGINEER UNDER THE LAWS OF THE STATE OF MARYLAND, LICENSE NO. 8588
EXPIRATION DATE: 6-6-18

FOR CONNECTICUT
ARTHUR L. KAY, R.A.
5521 TERRAIN DE GOLF DRIVE
LUTZ, FL 33558

	MODULAR SPACE CORPORATION CORPORATE OFFICE: 1200 SWEDSFORD ROAD., BERWYN, PA 19312 MANUFACTURING PLANT: 60 INDUSTRIAL ROAD, ELIZABETHTOWN, PA 17022		DRAWN BY: BUS CHECKED BY:
	DATE: 8-18-16 CODES: MULTI STATE LABELS:	REVISIONS:	
OWNERSHIP OF DOCUMENTS <small>THIS DOCUMENT AND THE IDEAS AND DESIGNS INCORPORATED HEREIN, AS AN INSTRUMENT OF SERVICE, IS THE PROPERTY OF MODULAR SPACE CORPORATION (MODSPACE) AND IS NOT TO BE USED, IN WHOLE OR IN PART FOR ANY OTHER PROJECT WITHOUT THE WRITTEN PERMISSION OF MODULAR SPACE CORPORATION.</small>	SCALE: NTS PLUMBING SUPPLY AND DWV ISOMETRICS AND INTERIOR ELEVATIONS MODSPACE STOCK SINGLE WIDE (10"x4") JAMES E. BRADLEY, P.E. CONSULTING ENGINEER 1765 CARNEGIE AVENUE CLEARWATER, FL 33758	PLAN NO. MOD-1044 (Stock - ME) REVISIONS:	