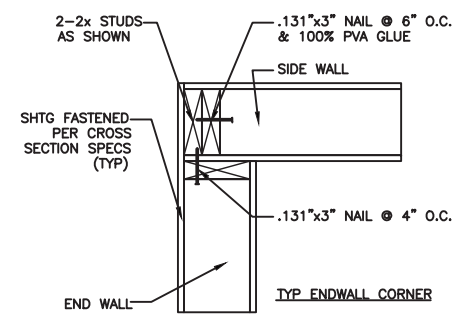


APPROVED
09 09 2016

DIMENSIONAL PLAN - OPTIONAL INTERIOR REMOVED



ENDWALL INTERSECTION DETAILS
SCALE: 3/4" = 1'-0" 1

JAMES E. BRADLEY
REGISTERED PROFESSIONAL ENGINEER
STATE OF WEST VIRGINIA
Lic. No. 6405

JAMES E. BRADLEY
REGISTERED PROFESSIONAL ENGINEER
COMMONWEALTH OF VIRGINIA
Lic. No. 006836

JAMES E. BRADLEY
REGISTERED PROFESSIONAL ENGINEER
STATE OF MARYLAND
Lic. No. 8588

JAMES E. BRADLEY
REGISTERED PROFESSIONAL ENGINEER
COMMONWEALTH OF PENNSYLVANIA
Lic. No. PE019214E

JAMES E. BRADLEY
REGISTERED PROFESSIONAL ENGINEER
STATE OF DELAWARE
Lic. No. 4520

ARTHUR L. KAY
REGISTERED PROFESSIONAL ARCHITECT
STATE OF CONNECTICUT
Lic. No. 0013243

FOR CONNECTICUT

ARTHUR L. KAY, R.A.
5521 TERRAIN DE GOLF DRIVE
LUTZ, FL 33558

PROFESSIONAL CERTIFICATION:
I HEREBY CERTIFY THAT THESE DOCUMENTS WERE PREPARED OR APPROVED BY ME, AND THAT I AM A DULY LICENSED PROFESSIONAL ENGINEER UNDER THE LAWS OF THE STATE OF MARYLAND, LICENSE NO. 8588
EXPIRATION DATE: 6-6-18

<p>ModSpace OWNERSHIP OF DOCUMENTS</p> <p><small>THIS DOCUMENT AND THE IDEAS AND DESIGNS INCORPORATED HEREIN, AS AN INSTRUMENT OF SERVICE, IS THE PROPERTY OF MODULAR SPACE CORPORATION (MODSPACE) AND IS NOT TO BE USED, IN WHOLE OR IN PART FOR ANY OTHER PROJECT WITHOUT THE WRITTEN PERMISSION OF MODULAR SPACE CORPORATION.</small></p>	<p>MODULAR SPACE CORPORATION CORPORATE OFFICE: 1200 SWEDSFORD ROAD, BERWYN, PA 19312 MANUFACTURING PLANT: 60 INDUSTRIAL ROAD, ELIZABETHTOWN, PA 17022</p>		<p>DATE: 8-18-16 CODES: MULTI STATE LABELS:</p>	<p>REVISIONS:</p>	<p>DRAWN BY: BJS CHECKED BY:</p>
	<p>SCALE: 3/16" = 1'-0"</p>		<p>DIMENSIONAL PLAN - OPTIONAL INTERIOR REMOVED MODSPACE STOCK SINGLE WIDE (10'x44')</p>		<p>PLAN NO. M08-1044 (Stock - NE) REVISIONS:</p>
<p>JAMES E. BRADLEY, P.E. CONSULTING ENGINEER 1765 CARNEGIE AVENUE CLEARWATER, FL 33756</p>		<p>6 OF 10</p>			