

**HVAC KEY NOTES:**

- 1 4" EXHAUST DUCT FROM BATHROOM EXHAUST FAN TO APPROVED DISCHARGE CAP WITH INTEGRAL BACK DRAFT DAMPER. MAINTAIN 3FT MIN. CLEARANCE TO BUILDING OPENINGS, AND 10' MIN. FROM MECHANICAL FRESH AIR INTAKES. SEE 3/M4.0 FOR ROOF DISCHARGE DETAIL. SEE 13/M4.0 FOR WALL DISCHARGE.
- 2 HOOD DRAWINGS (H-1 - H-5) FOR ADDITIONAL INFORMATION.
- 3 SEE SHEET M4.2 FOR KITCHEN HOOD SECTIONS
- 4 DISHWASHER: TYPE II HOOD AND EXHAUST SYSTEM. USE ALUMINUM DUCTWORK.
- 5 6"Ø SHEETMETAL EXHAUST DUCT IN SOFFIT TO APPROVED SOFFIT CAP WITH BACKDRAFT DAMPER.
- 6 6" EXHAUST DUCT TO APPROVED DISCHARGE CAP WITH INTEGRAL BACK DRAFT DAMPER. MAINTAIN 3FT MIN. CLEARANCE TO ALL OPENINGS, SEE 3/M4.0 FOR ROOF DISCHARGE DETAIL. SEE 13/M4.0 FOR WALL DISCHARGE.
- 7 7"Ø RANGE EXHAUST DUCT TO APPROVED CAP. PROVIDE UL LISTED FIRE CAULKING AT RATED MEMBRANE PENETRATIONS.
- 8 OUTDOOR COOLER/ FREEZER UNITS. ROUTE REFRIGERATION LINES UNDER SLAB IN 6" CONDUIT WITH LONG SWEEPS.
- 9 INSTALL ATTIC FANS (EF-9) NEAR ROOF PEAK, OPPOSITE OF MAIN PARKING.
- 10 8" EXHAUST DUCT FROM EXHAUST FAN TO APPROVED DISCHARGE CAP WITH INTEGRAL BACK DRAFT DAMPER. MAINTAIN 3FT MIN. CLEARANCE TO ALL OPENINGS. SEE 3/M4.0 FOR ROOF DISCHARGE DETAIL.
- 11 LOCATION OF FUTURE DOOR
- 12 MECHANICAL SHAFT COORDINATE WITH ARCHITECTURAL AND STRUCTURAL. SEE DETAILS 8/A8.8 AND 2/S2.5.
- 13 SPLIT SYSTEM EVAPORATORS, SEE MECH. SPECIFICATIONS
- 14 FILTER RETURN GRILLE FOR T-BAR INSTALLATION.
- 15 DUCT LOCATED IN ATTIC, INSULATE WITH EXTERIOR INSULATION MIN. 2"
- 16 ROUTE DRAIN OVER AND DOWN IN WALL. DAYLIGHT INTO JANITOR SINK.
- 17 EXHAUST DUCTS LOCATED IN THE ATTIC FROM BELOW 1" INSULATION.
- 18 8x8 EXHAUST DUCT TO APPROVED CAP.
- 19 ROUTE ALL DUCTWORK UNDER MECHANICAL WELL INTO ATTIC SPACE.
- 20 SEE SHEETS SMOKE CONTROL SHEETS SC1.1, 1.2 1.3, 1.4 AND SC2.1 FOR ATRIUM SMOKE EXHAUST

- 21 COORDINATE DUCT ROUTING CLOSELY W/ STRUCTURAL. NOTIFY ARCHITECT IF CONFLICTS OCCUR. TYPICAL FOR ALL AREAS OF BUILDING.
- 22 W/ FSD AT TOP OF SHAFT
- 23 DRYER VENT, (4" MIN. MATCH DRYER DISCHARGE) EXHAUST DUCT TO APPROVED ROOF CAP WITH INTEGRAL BACK DRAFT DAMPER.
- 24 MOUNT PTAC UNIT 6" ABOVE OUTSIDE ROOF LINE. PROVIDE REMOTE THERMOSTAT OR REMOTE CONTROLLER WHERE MANUFACTURER EQUIPMENT HAS NO OPTION FOR REMOTE THERMOSTAT.
- 25 WATER HEATER VENTING UP. PROVIDE 3" PVC FOR VENT AND 3" PVC FOR COMBUSTION AIR. SEE DETAILS 11/M2.2 AND 11/M4.0 2 VENTS PER STUD BAY.
- 26 DRYER VENT, 4" EXHAUST DUCT TO IN-O-VA TE DRYER BOX AT WALL PENETRATION. PROVIDE UL LISTED RATED SEAL AT MEMBRANE PENETRATIONS. SEE SHEET M4.0 FOR DRYER DETAILS.
- 27 PROVIDE CONDENSATE LINE FOR FUTURE THRU-WALL PTAC UNITS IN "C" UNIT SPARE BEDROOMS.
- 28 SMOKE CONTROL DUCTS. SEE "SC" SHEETS FOR MORE INFORMATION.
- 29 TRANSFER AIR DUCT. TWO 12X12" PRICE PDDR DIFFUSER CONNECTED WITH A 8X4" DUCT. PROVIDE A FIRE SMOKE DAMPER WHERE DUCT CROSSES CORRIDOR WALL. MOTOR TO BE MOUNTED ON CORRIDOR SIDE OF WALL. SEE DETAIL 5/M4.0.
- 30 LOCATE IN VACANT SPACE ABOVE BUILT-IN FREEZER/REFRIGERATOR
- 31 INTERLOCK MOTORIZED DAMPER TO OPEN WHEN HP IS OPERATING. SEE MECHANICAL SCHEDULE (M4.2) FOR MINIMUM OUTSIDE AIR REQUIREMENT.

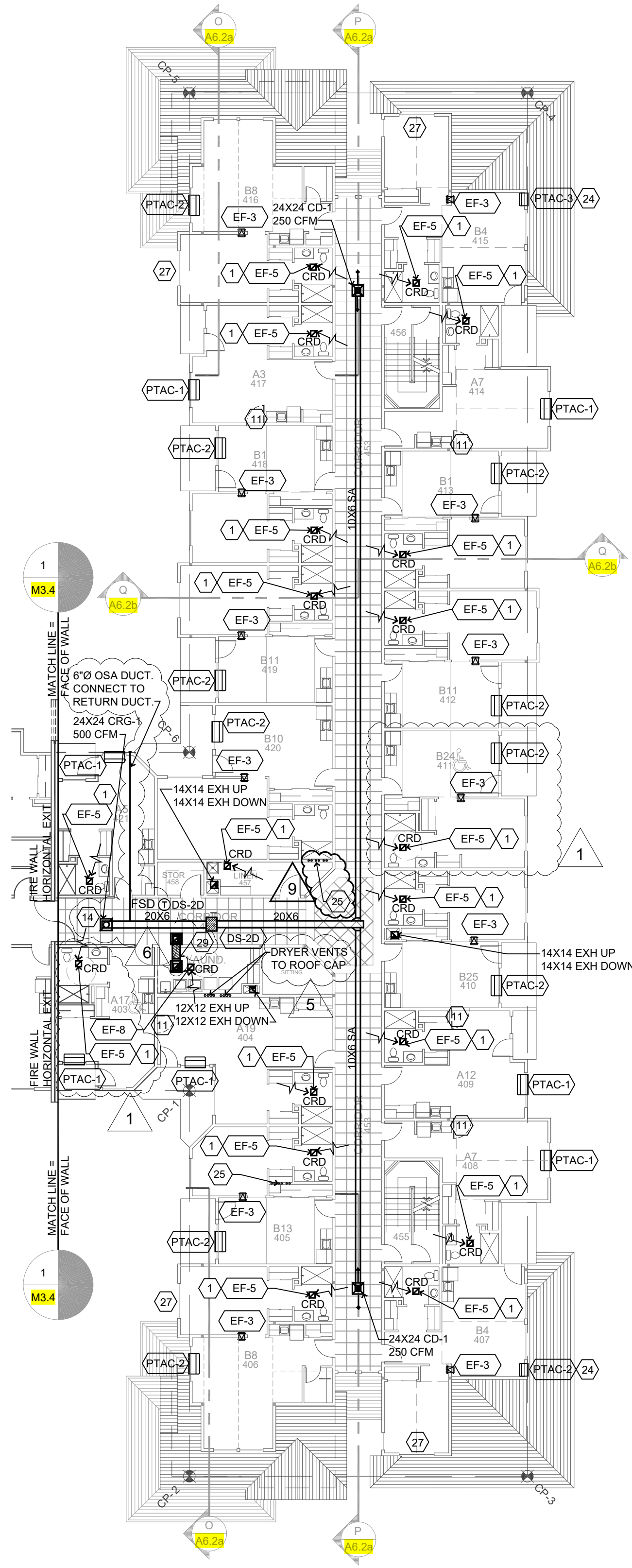
DIFFUSER, REGISTER AND GRILLE SCHEDULE						
SYM	TYPE	FACE	FRAME	DAMPER	FINISH	MODEL NO.
CD-1	CEILING DIFFUSER	LOUVERED	T-BAR	MVD	WHITE	E.H. PRICE SMD
CD-2	CEILING DIFFUSER	LOUVERED	SURFACE	ORD	WHITE	E.H. PRICE SMD
CD-3	CEILING SUPPLY/EXHAUST	LOUVERED	SURFACE	N/A	WHITE	ALDES 'CAR'
CRG-1	CEILING GRILLE	PERFORATED	T-BAR	MVD	WHITE	E.H. PRICE PDR
CRG-2	CEILING GRILLE	PERFORATED	SURFACE	ORD	WHITE	E.H. PRICE PDR
CRG-3	CEILING FILTER GRILLE	PERFORATED	T-BAR	MVD	WHITE	E.H. PRICE 10FF
RS-1	SIDEWALL GRILL	FIXED BAR	ORD	ORD	WHITE	E.H. PRICE 530
RS-1	SIDEWALL SUPPLY GRILL	1" BORDER	ORD	ORD	WHITE	E.H. PRICE 520
TG-1	TRANSFER GRILL	FIXED BAR	1" BORDER	ORD	WHITE	E.H. PRICE 530
CTG-1	CEILING GRILLE	FIXED BAR	SURFACE	ORD	WHITE	E.H. PRICE 530
WL-1	WALL LOUVER	FIXED BAR	6" DEEP	ORD	MLL	RUSKIN ELF6375DX
WL-2	WALL LOUVER	FIXED BAR	2" DEEP	ORD	MLL	GREENHECK EHR-201

ORD = MANUAL BLADE DAMPER  
MVD = MANUAL VOLUME DAMPER

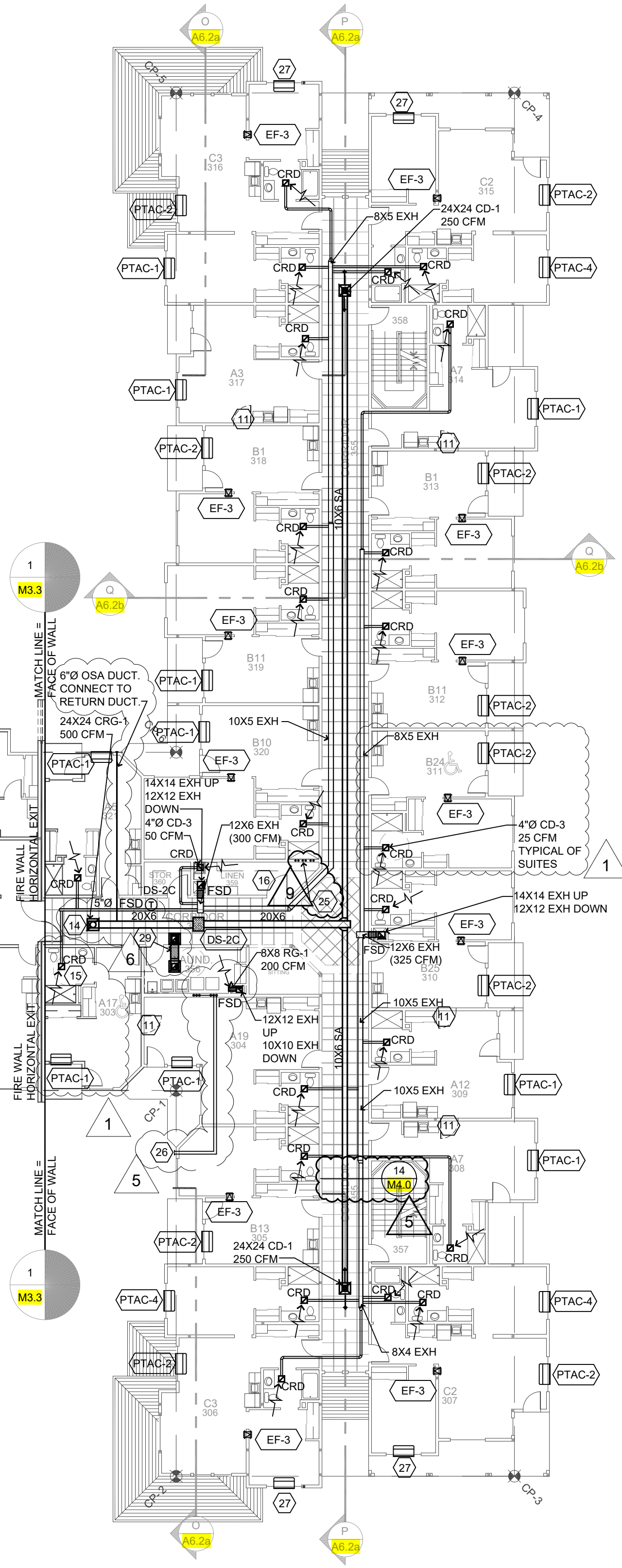
SEE DETAILS 8/M2.1, 9/M2.1, AND 9/M4.0 FOR ALLOWABLE BORING / NOTCHING OF MEMBERS.

PTAC CALLOUTS HAVE BEEN UPDATED

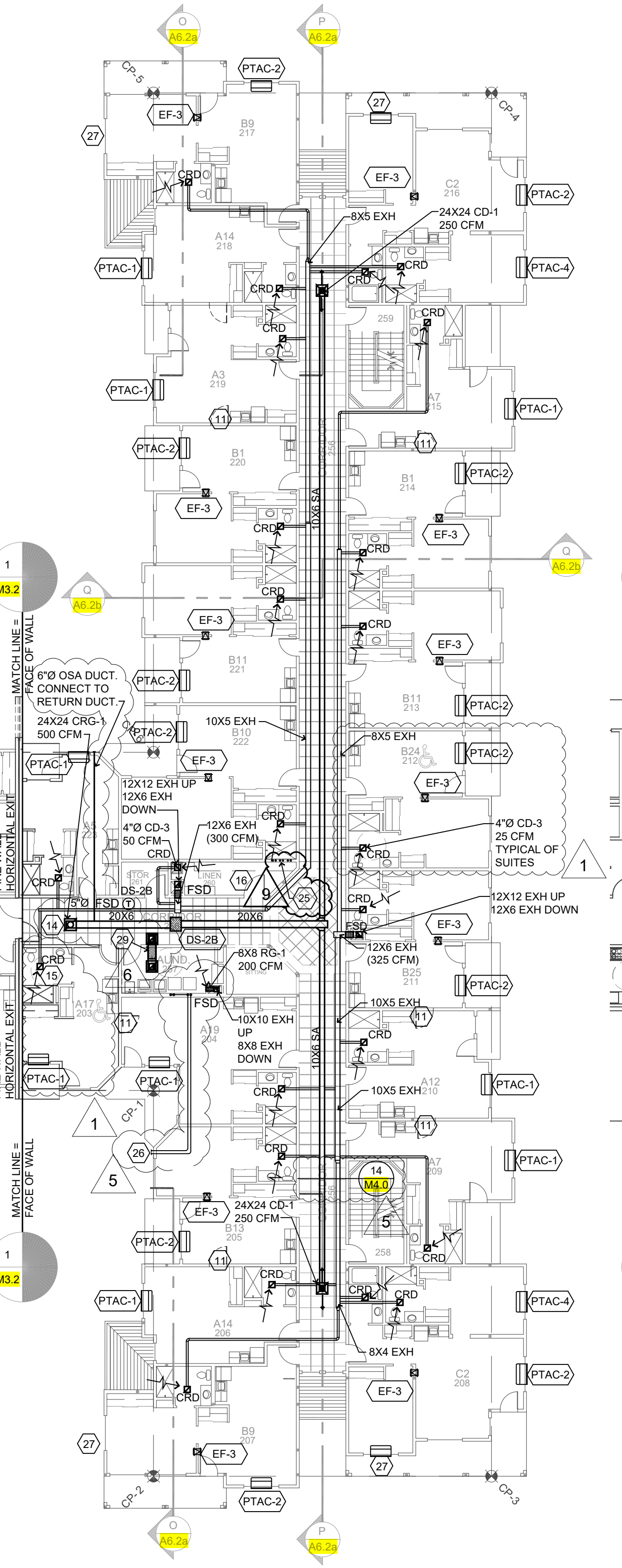
SEE M3.7 FOR KEYED NOTES AND VENTILATION SCHEDULE



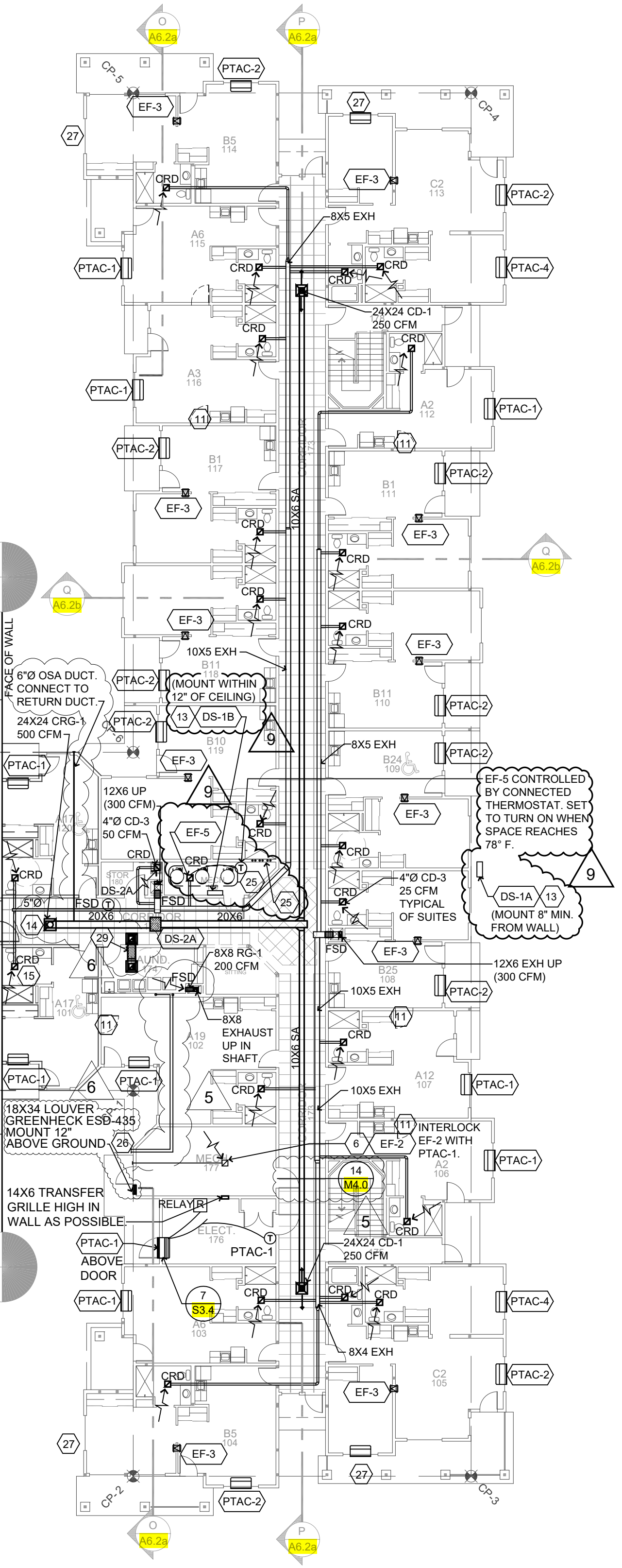
4 FOURTH FLOOR - HVAC  
SCALE: 1/16" = 1'-0"



3 THIRD FLOOR - HVAC  
SCALE: 1/16" = 1'-0"



2 SECOND FLOOR - HVAC  
SCALE: 1/16" = 1'-0"



1 FIRST FLOOR - HVAC  
SCALE: 1/16" = 1'-0"

COLSON AND COLSON  
GENERAL CONTRACTOR, INC.  
2280 MCGILCHRIST STREET SE, SUITE 200  
SALEM, OREGON, 97302  
PHONE (503) 586-7401

PORTLAND  
RETIREMENT RESIDENCE  
802 OCEAN AVE. PORTLAND, MAINE 04103

WING 'B'  
HVAC PLAN

DATE  
8/28/2015  
REVISED DATE  
SHEET  
M3.6

7/18/2016 3/13/2017

WING 'B' HVAC PLAN  
SCALE: 1/8" = 1'-0"

lenity  
architecture  
Portland, Oregon 97201  
360-555-5555  
lenityarchitecture.com

