

SEE SHEET **M2.5** FOR WASTE RISERS AND DOMESTIC RISER UP IN WALL. SEE SHEET **M2.2** FOR INDIVIDUAL DOMESTIC ROUTING IN EACH ROOM.

NOTE: REFER TO SHEETS **M2.1** AND **A7.7** FOR FIRE RATING OF PLUMBING PENETRATIONS.

ALL HORIZONTAL WASTE PIPING SHALL BE RUN AT A SLOPE OF 1/8" PER FT. UNLESS OTHERWISE NOTED. INVERT ELEVATIONS ARE APPROXIMATE. CONTRACTOR TO VERIFY

SEE DETAILS 8/**M2.1**, 9/**M2.1**, AND 9/**M4.0** FOR ALLOWABLE BORING / NOTCHING OF MEMBERS.

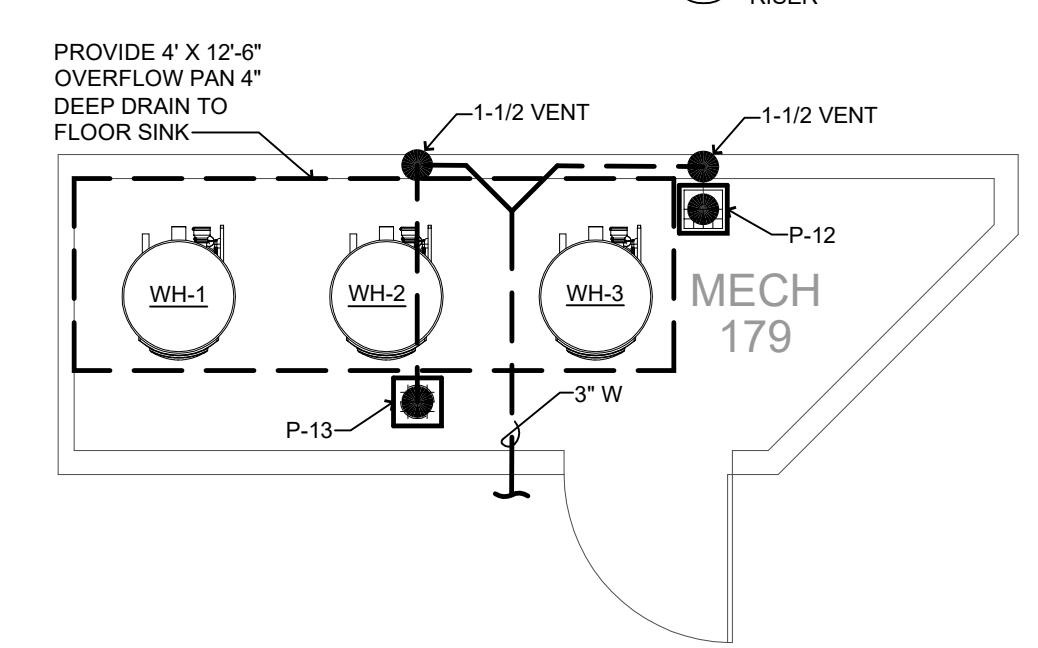
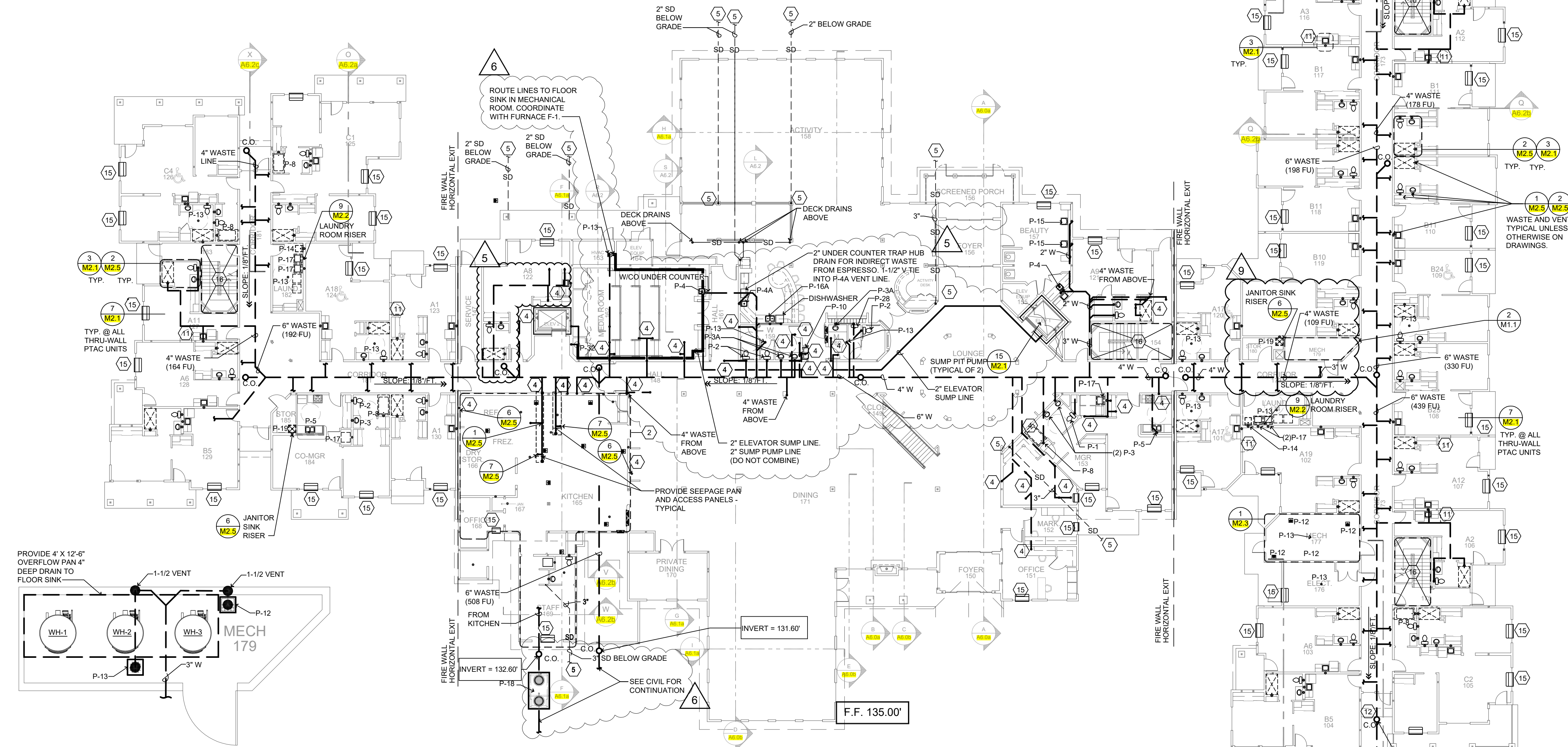
lenity
architecture
3150 Kettle Court SE, Salem, Oregon 97301
P: 503.399.1090 F: 503.399.0565
W: lenityarchitecture.com

COLSON AND COLSON
GENERAL CONTRACTOR, INC.
2280 MACGILCHRIST STREET SE, SUITE 200
SALEM, OREGON, 97302
PHONE (503) 586-7401

PORTLAND
RETIREMENT RESIDENCE
802 OCEAN AVE. PORTLAND, MAINE 04103

FIRST FLOOR
WASTE PIPING

DATE: 8/28/2015
REVISED DATE: 9/22/2015, 2/2/2016
SHEET: M1.1
PLUMBING



9 **2** ENLARGED MECHANICAL PLAN
M1.1 SCALE: 1/4" = 1'-0"

PLUMBING LEGEND	
	COLD WATER PIPING
	120°F DOMESTIC HOT WATER PIPING
	120°F DOMESTIC HOT WATER RECIRC. PIPING
	140°F DOMESTIC HOT WATER PIPING
	140°F DOMESTIC HOT WATER RECIRC. PIPING
	STORM DRAIN ABOVE GRADE
	STORM DRAIN BELOW GRADE
	VENT PIPING
	GREASE LINE PIPING
	NATURAL GAS PIPING
	PIPING BELOW GRADE
	UNION: GATE OR BALL VALVE: CHECK VALVE
	PRESSURE REGULATING VALVE
	BALANCING VALVE
	HOSE BIBB WITH INTEGRAL VACUUM BREAKER
	PIPE WITH END CAP, REFER TO NOTE ON DWG.
	ROOF DRAIN
	OVERFLOW DRAIN
	SANITARY SEWER BELOW SLAB/GRADE
	SANITARY SEWER ABOVE SLAB/GRADE
	CLEANOUTS TO GRADE OR FINISH FLOOR WITH COVER
	FLOOR SINK
	FLOOR DRAIN
	PLUMBING CONNECTION
	FIRE DEPARTMENT CONNECTION

PLUMBING KEY NOTES	
1	GAS MAIN SEE 1/ M2.4
2	SEE 2/ M2.3 FOR THIS AREA
3	TYPICAL RISER, SEE 4/ M2.2
4	ROUTE PIPING TO FIXTURES ON FLOOR ABOVE/BELOW. SEE RISERS DETAIL.
5	CONNECT INTERIOR ROOF DRAIN TO STORM WATER SYSTEM. SEE CIVIL PLANS DISCHARGE 6" ABOVE LOWER ROOF AS SHOWN. MIN. 1/8" PER FT. SLOPE.
6	PROVIDE SHUT-OFF VALVES AND ACCESS. SEE RISER 3/ M2.2
7	ROUTE GAS PIPING UP/DOWN. SEE 1/ M2.4
8	HOSE BIBB (P-23) - (FROST FREE)
9	HOSE BIBB (P-23) IN MECH. WELL - (FROST FREE)
10	CLEAN OUT OR MANHOLE AS REQ'D BY LOCAL CODE.
11	PROVIDE CONDENSATE LINE FOR FUTURE THRU-WALL PTAC UNITS IN "C" UNIT SPARE BEDROOMS.
12	ROUTE WATER MAINS OVERHEAD TO MECH. ROOM
13	3/4" CONDENSATE DRAIN. SEE 7/ M2.1
14	NO PLUMBING ROUTED IN STAIR WALL-UTILIZE 2X6 FUR OUT.
15	3" ROOF DRAIN, UNLESS NOTED OTHERWISE ON DRAWING.
16	SLEEVE WASTE PIPING THROUGH FOUNDATION.
17	PROVIDE 3/4" CONDENSATE DRAIN FOR FUTURE PTAC. SEE 7/ M2.1

FIXTURE SYMBOLS:	
	ROLL-IN SHOWER
	TUB
	ACCESSIBLE SUITE SYMBOL

NOTE:
IF SYMBOL ON A-5 UNIT PLANS DIFFER FROM WHAT IS LABELED CONTACT ARCH. FOR CLARIFICATION

TYPICAL A,B,C UNIT FIXTURES U.O.N.:

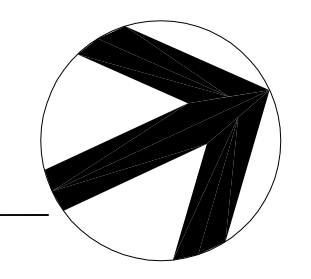
- P-1 WATER CLOSET
- P-3 LAVATORY SINK
- P-4 KITCHENETTE SINK
- P-6 SHOWER

TYPICAL ADA UNIT FIXTURES U.O.N.:

- P-1 WATER CLOSET
- P-3 LAVATORY SINK
- P-4b KITCHENETTE SINK
- P-7 SHOWER
- P-13 FLOOR DRAIN

*ALL C UNITS TO HAVE A P-7 AND P-8 REFER TO UNIT PLANS FOR LOCATIONS.

1 **1** FIRST FLOOR - WASTE PIPING
M1.1 SCALE: 1/16" = 1'-0"



PLUMBING