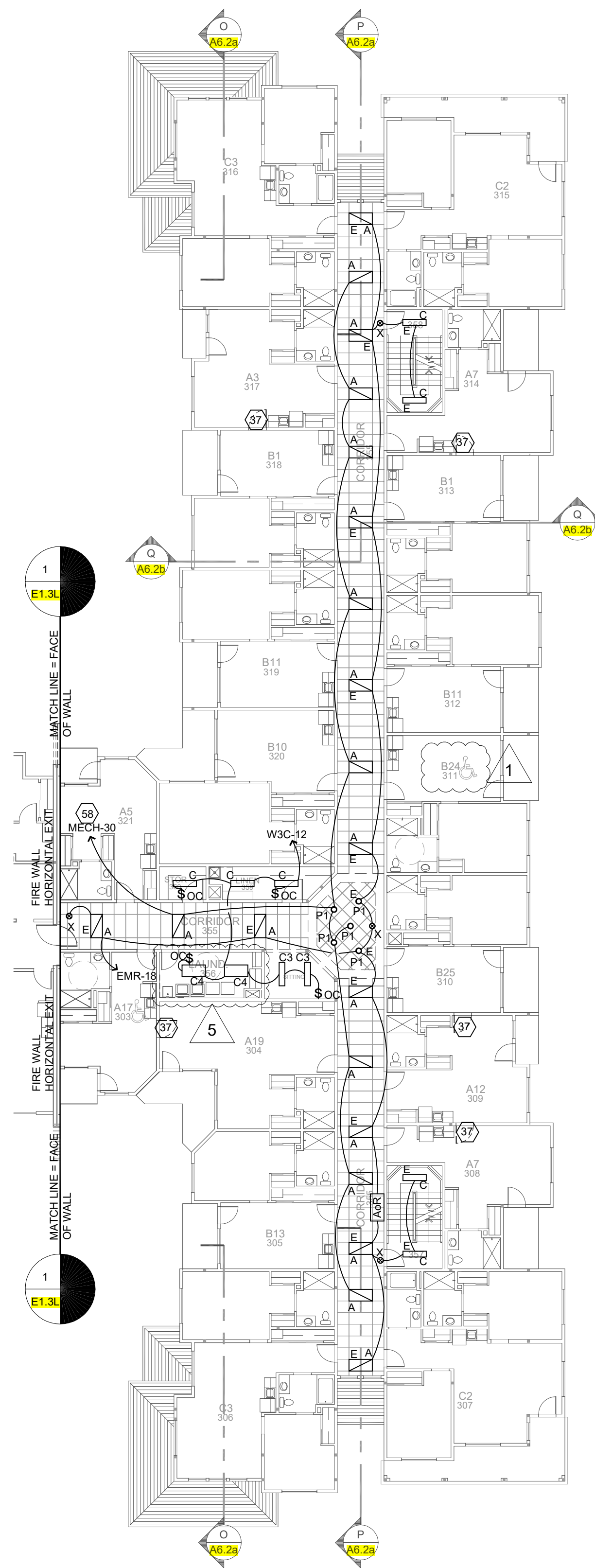
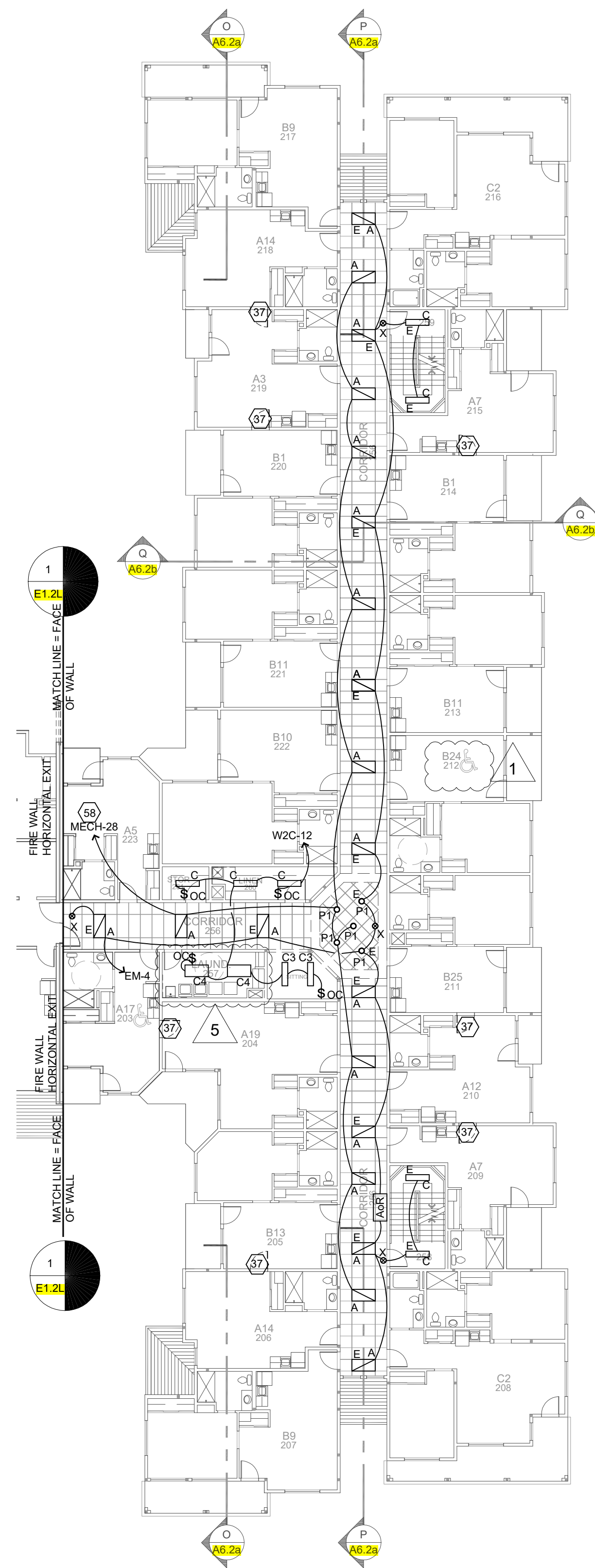


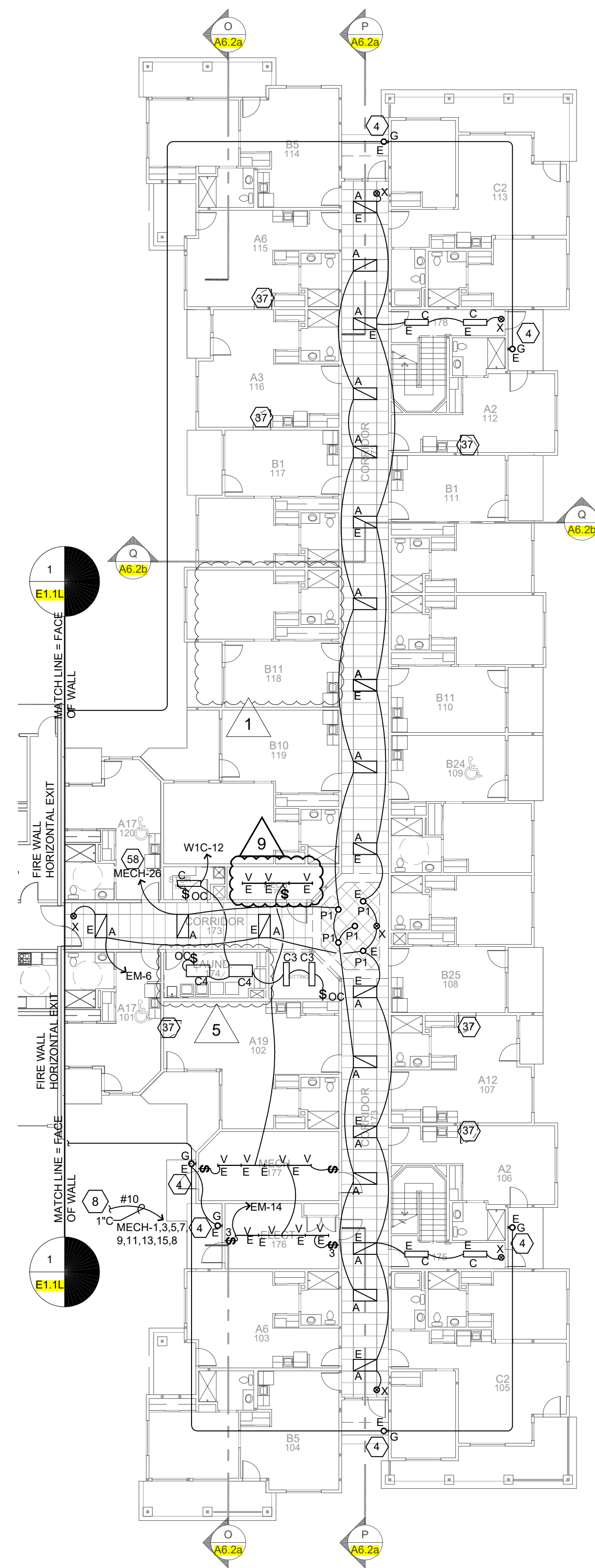
4 FOURTH FLOOR - LIGHTING
E1.5L SCALE: 1/16" = 1'-0"



3 THIRD FLOOR - LIGHTING
E1.5L SCALE: 1/16" = 1'-0"



2 SECOND FLOOR - LIGHTING
E1.5L SCALE: 1/16" = 1'-0"



1 FIRST FLOOR - LIGHTING
E1.5L SCALE: 1/16" = 1'-0"

ELECTRICAL MOUNTING HEIGHTS		ELECTRICAL LEGEND	
ITEM	HEIGHT A.F.F. TO CENTER LINE		RECESSED FLUORESCENT LIGHT FIXTURE
THERMOSTATS	48"		SURFACE MOUNT FLUORESCENT LIGHT FIXTURE
DOOR HOLDERS	75" TO CENTER		OPEN CHANNEL FLUORESCENT, TYPE INDICATED
EMERGENCY CALL	40"		WALL MOUNT FIXTURE, TYPE INDICATED
SPEAKERS & PULL STATIONS	42"		SURFACE MOUNT OR CHAIN HUNG FIXTURE, TYPE INDICATED
WALL LIGHTS IN CORRIDORS	80" TO CENTER LINE		RECESSED FIXTURE, TYPE INDICATED
EXTERIOR WALL LIGHTS	96" TO CENTER LINE (U.N.O.)		AREA OF RESCUE SIGN - SEE LIGHTING SCHEDULE
OUTLETS (COMMON AREAS)	17"		EXIT LIGHT, DIRECTIONAL ARROWS AS INDICATED.
OUTLETS (SUITE AREAS)	24"		WIRE: ALL EXIT LIGHTS TO NEAREST EM LIGHT CIRCUIT.
LIGHT SWITCH	44"		S.P.S.T. SWITCH, DIMMER SWITCH, FAN SPEED CONTROL SWITCH
COUNTER OUTLETS	44" TO BOTTOM		3-WAY SWITCH, PILOT LIGHT SWITCH, KEYSWITCH
STAIR LIGHTS	2" TO BOTTOM, ABOVE TREAD		AUTOMATIC WALL SWITCH
ELECTRICAL PANEL	80" TO TOP OF PANEL		DUPLEX RECEPTACLE, SPLIT WIRED WITH 1/2 SWITCHED, ABOVE COUNTER
BATHROOM WALL VANITY LIGHT	6'-11" TO CENTER (SEE NOTE #1)		DOUBLE DUPLEX (TWO) DUPLEX RECEPTACLE
			FLOOR BOX RECEPTACLE
			208V, 1P RECEPTACLE - 20A EXCEPT WHEN NOTED
			THROUGH WALL PTAC UNIT. SEE MECHANICAL.
			DISCONNECT SWITCH
			FUSED DISCONNECT SWITCH
			TRANSFORMER
			ELECTRICAL PANEL OR ENCLOSURE, DESIGNATION NOTED
			ELECTRICAL MOTOR LOAD
			CONTROL CABLE
			SPECIAL RECEPTACLE
			TELEVISION SIGNAL CONNECTION
			TELEPHONE CONNECTION
			EMERGENCY PULL SWITCH
			THERMOSTAT
			TIMESWITCH
			TRANSFORMER
			CEILING MOUNTED OCCUPANCY SENSOR
			JUNCTION BOX
			"E" INDICATES WIRING TO EMERGENCY POWER. SEE SCHEDULE ON E21.
			WP WEATHER PROOF
			GFI GROUND FAULT CURRENT INTERRUPTING RECEPTACLE
			CVO CONVENIENCE OUTLET

NOTES:
1. CENTER OVER CABINET BASE PROVIDE BACKING IF REQUIRED.
2. INFORMATION SHOWN FOR REFERENCE. CONFORM TO ARCH. ADA, AND CODE REQUIREMENTS.

SEE E1.1L FOR ELECTRICAL KEYED NOTES AND GENERAL NOTES.

