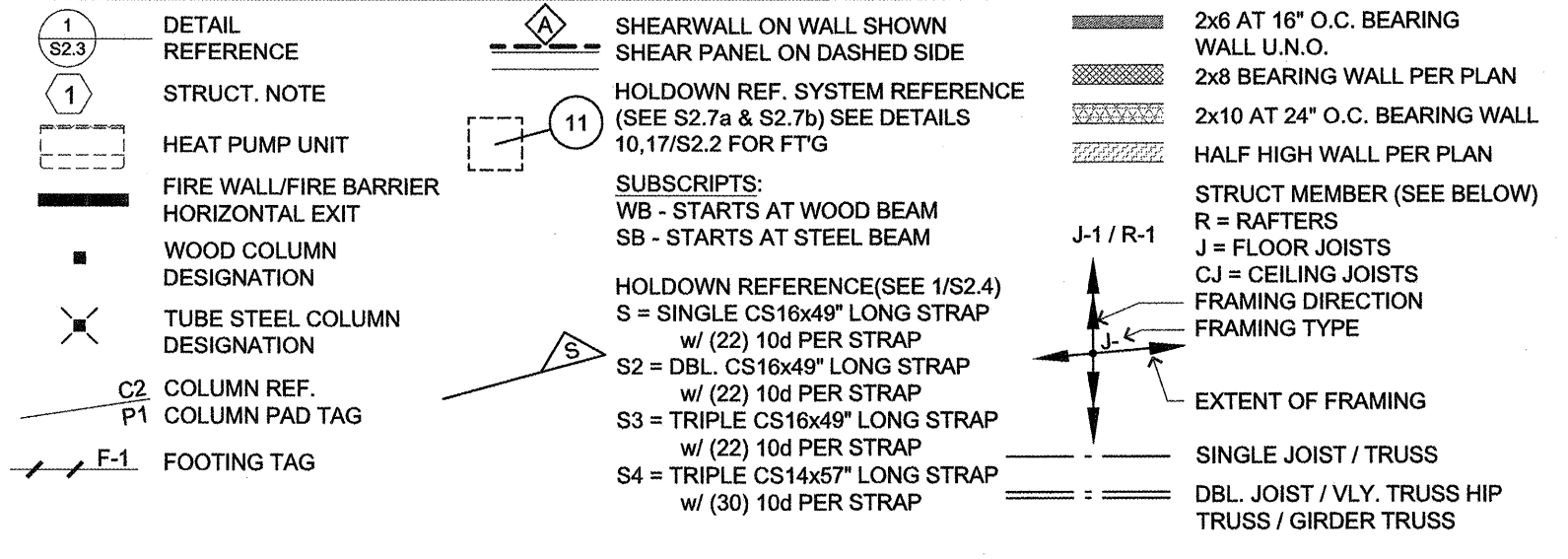


SEE S1.6 FOR STRUCTURAL FRAMING NOTES AND GENERAL STRUCTURAL NOTES.

SEE DETAIL 1 AND 3 ON S2.3 FOR ALLOWABLE BORING / NOTCHING OF MEMBERS.

ALL 1ST FLOOR BEARING WALL STUDS TO BE 2x6 #1/#2 SPF @ 16" o.c. AND SILL AND DBL TOP PLATES TO BE 2x6 DFL GRADE.

STRUCTURAL LEGEND:



COLUMN SCHEDULE

| COL | MATERIAL | SIZE | BASEPLATE |
|-----|----------------------------|------------------|---------------------|
| C1 | SPF #1/#2 OR BETTER DFL #2 | (2) 2x6 4x6 | |
| C2 | SPF #1/#2 OR BETTER DFL #1 | (3) 2x6 6x6 | |
| C3 | ASTM A500 | 3-1/2x3-1/2x1/4" | 9-1/2"x8"-9/12x3/4" |
| C4 | ASTM A500 | 4x4x1/4" | 10"x0"-10"x3/4" |
| C5 | ASTM A500 | 4x4x5/16" | 10"x0"-10"x3/4" |
| C6 | ASTM A500 | 4x4x3/8" | 10"x0"-10"x3/4" |
| C7 | ASTM A500 | 5x5x3/8" | 11"x0"-11"x3/4" |
| C8 | ASTM A500 | 5x5x1/4" | 11"x0"-11"x3/4" |
| C9 | ASTM A500 | 6x6x5/16" | 12"x12"x3/4" |
| C10 | SPF #1/#2 OR BETTER DFL #2 | (4) 2x4 4x4 | |
| C11 | ASTM A500 | 8x8x1/4" | 14"x14"x3/4" |

JOIST SCHEDULE

| JOIST | MATERIAL | SIZE | SPACING |
|-------|-----------------|------------------------|----------|
| J-1 | REBUILT RED-145 | 9-1/2" DEPTH | 24" oc |
| J-2 | REBUILT RED-180 | 18" DEPTH | 24" oc |
| J-3 | REBUILT RED-180 | 18" DEPTH | 16" oc |
| J-4 | REBUILT RED-180 | DBL 18" DEPTH | 19.2" oc |
| J-5 | REBUILT RED-180 | 18" DEPTH (multi-span) | 24" oc |
| J-6 | REBUILT RED-145 | DBL 9-1/2" DEPTH | 16" oc |
| J-7 | REBUILT RED-145 | 9-1/2" DEPTH | 12" oc |
| J-8 | REBUILT RED-180 | DBL 18" DEPTH | 16" oc |
| J-9 | REBUILT RED-180 | DBL 18" DEPTH | 24" oc |
| CJ-1 | SPF #1/#2 | 2x10 | 24" oc |

RAFTER SCHEDULE

| RAFTER | MATERIAL | SIZE/SPAN* | SPACING |
|--------|-----------------|-------------------|----------|
| R-1 | SPF #1/#2 | 2x12, 8'-6" SPAN | 24" oc |
| R-2 | SPF #1/#2 | 2x12, 11'-6" SPAN | 16" oc |
| R-3 | REBUILT RED-180 | 11-7/8" DEPTH | 24" oc |
| R-4 | REBUILT RED-180 | DBL 11-7/8" DEPTH | 19.2" oc |
| R-5 | SPF #1/#2 | 2x6, 7'-6" SPAN | 24" oc |

SHEARWALL SCHEDULE

| SHEARWALL MARK | APA WALL BD. | BOTH SIDES | SHTG. TYPE & THICKNESS | SHTG. NAIL INFO. | FIELD OC. | KEY NOTES | F.L.R. TO F.L.R. CONNECTION | SHEARWALL TO CONC. CONN. | LOAD (k/ft) |
|----------------|--------------|------------|------------------------|------------------|-----------|-----------|-----------------------------|--------------------------|-------------|
| B | 7/16" | YES | 8d | 12" | 12" | 1 | 22" | 6/S2.3 1/2" DIA. @ 36" | 210 |
| C | 7/16" | YES | 8d | 12" | 12" | 1 | 22" | 5/S2.6 5/8" DIA. @ 48" | 320 |
| D | 7/16" | YES | 8d | 12" | 12" | 1 | 14" | 6/S2.3 1/2" DIA. @ 24" | 415 |
| E | 7/16" | YES | 8d | 12" | 12" | 1 | 11" | 6/S2.6 5/8" DIA. @ 36" | 535 |
| F | 7/16" | YES | 8d | 12" | 12" | 1 | 8" | 6/S2.3 1/2" DIA. @ 10" | 640 |
| G | 7/16" | YES | 8d | 12" | 12" | 1 | 7" | 6/S2.6 5/8" DIA. @ 16" | 830 |
| H | 7/16" | YES | 8d | 12" | 12" | 1 | 5" | 6/S2.6 5/8" DIA. @ 12" | 1100 |
| J | 7/16" | YES | 8d | 12" | 12" | 1 | 4" | 6/S2.6 5/8" DIA. @ 15" | 1460 |

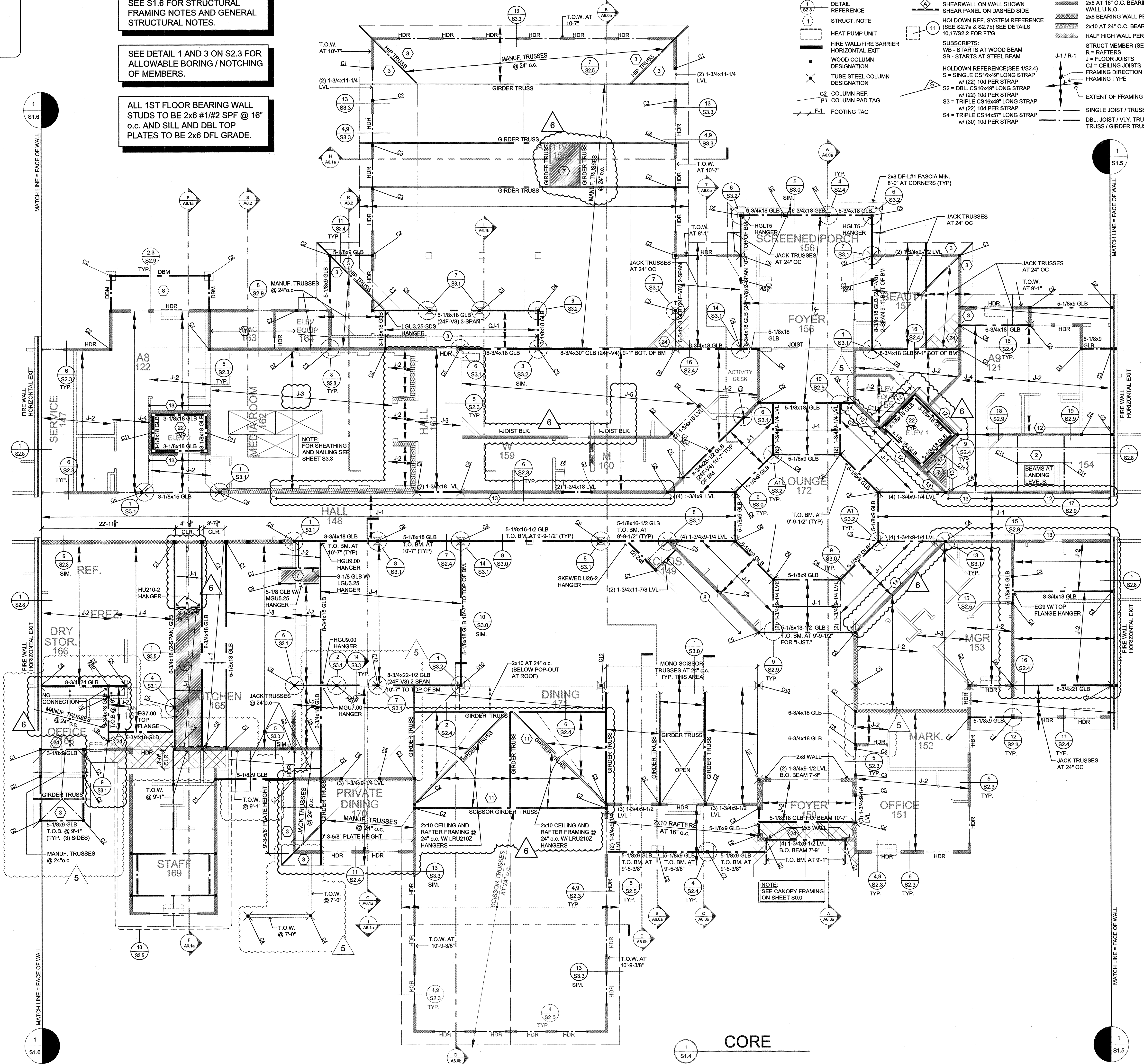
NOTE: SHEARWALL TYPES "P" - "J" ARE ON BOTH SIDES OF WALL.

KEY NOTES:

- 3x STUDS AT ADJOINING PLYWD PANEL EDGES.
- 3x STUDS AND SILL PLATES, STAGGER PLYWD PANEL EDGES.
- 3x DFL STUDS AND SILL PLATES, STAGGER PLYWD PANEL EDGES.
- 5/8" GYPSUM SHEATHING TO BE SECURED WITH 6d COOLER NAILS OR #6-1" TYPE "W" OR "S" SCREWS DIRECTLY TO STUDS.
- PLYWD PANEL EDGES ARE TO BE STAGGERED TO FALL ON DIFFERENT FRAMING MEMBERS.
- NAILS ARE TO BE COMMON OR HOT DIPPED GALVANIZED U.O.N.
- 3x SILL PLATES REQUIRED AT FOUNDATION ONLY.

SHEAR PANEL NOTES:

- * SHEAR VALUES ARE ADJUSTED FOR SPRUCE-PINE-FIR STUDS @ 16" oc U.O.N.
- * ALL APA SHEATHING SHEARWALLS TO BE BACKED WITH 2" NOMINAL OR WIDER FRAMING.
- * WHEN APA RATED PANELS ARE INSTALLED TO BOTH SIDES OF WALL, PANEL JOINTS OFFSET TO FALL ON DIFFERENT FRAMING MEMBERS.
- * NAILING NOT TO PENETRATE THE OUTER VENEER LAYER.
- * WHEN USING A NAIL GUN, CONTRACTOR SHALL ENSURE THAT GUN IS SET TO INSTALL NAIL SLIGHTLY PROUD OF SURFACE BEING NAILED. NAIL SHALL THEN BE SET BY HAMMER, DO NOT ALLOW NAIL TO OVER PENETRATE WOOD SURFACE ESPECIALLY ON SHEARWALLS.
- * ALL EDGES ON APA RATED PANELS TO BE LOCKED TO MAINTAIN STRENGTH.
- * ALL PANELS LISTED MAY NOT BE USED ON ALL PROJECTS. REFER TO THE SHEARWALL LAYOUT PLANS FOR SIZE, TYPE AND LOCATION OF PANELS.
- * GYPSUM WALLBOARD LOAD IS REDUCED IN HIGH SEISMIC LOCATIONS.
- * SEE DETAIL #14/S2.5 FOR STAPLES TO NAIL EQUIVALENT LATION.
- * 7/16 OSB (PS2-92 GRADE) MAY BE USED IF APPLIED DIRECTLY TO FRAMING WHEN STUDS ARE SPACED A MAXIMUM OF 16" o.c. OR PANELS ARE APPLIED WITH LONG DIMENSION ACROSS STUDS. 15/32 OSB SHALL BE USED WHEN STUDS ARE SPACED A MAXIMUM OF 24" o.c.
- * USE EITHER 16d NAILS OR 1" TP4" CLIPS WHEN SHTG IS ATTACHED TO LOWER TOP PLATE.
- * ALL ANCHOR BOLTS AT SHEARWALLS TO HAVE A 3x3x1/4 THICK PLATE WASHER.



2ND FLOOR CORE FRAMING PLAN
SCALE: 1/8"=1'-0"

lenity architecture
3150 Kettle Court SE, Salem, Oregon 97301
P: 503.399.1050 F: 503.399.0655 W: lenityarchitecture.com

COLSON AND COLSON
GENERAL CONTRACTOR, INC.
2280 McGLCHRIST STREET SE, SUITE 200
SALEM, OREGON, 97302
PHONE (503) 586-7401

PORTLAND
RETIREMENT RESIDENCE
802 OCEAN AVE., PORTLAND, MAINE 04103

2ND FLOOR CORE FRAMING CORE PLAN

SHEET S1.4

DATE
8/28/2015

REVISED DATE

7/18/2016