

**STRUCTURAL FRAMING NOTES**

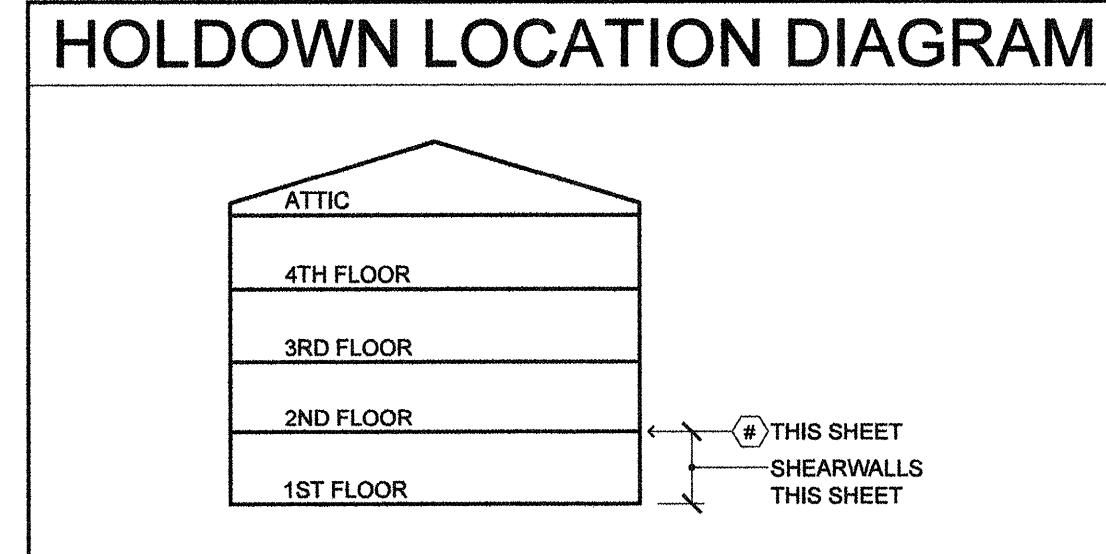
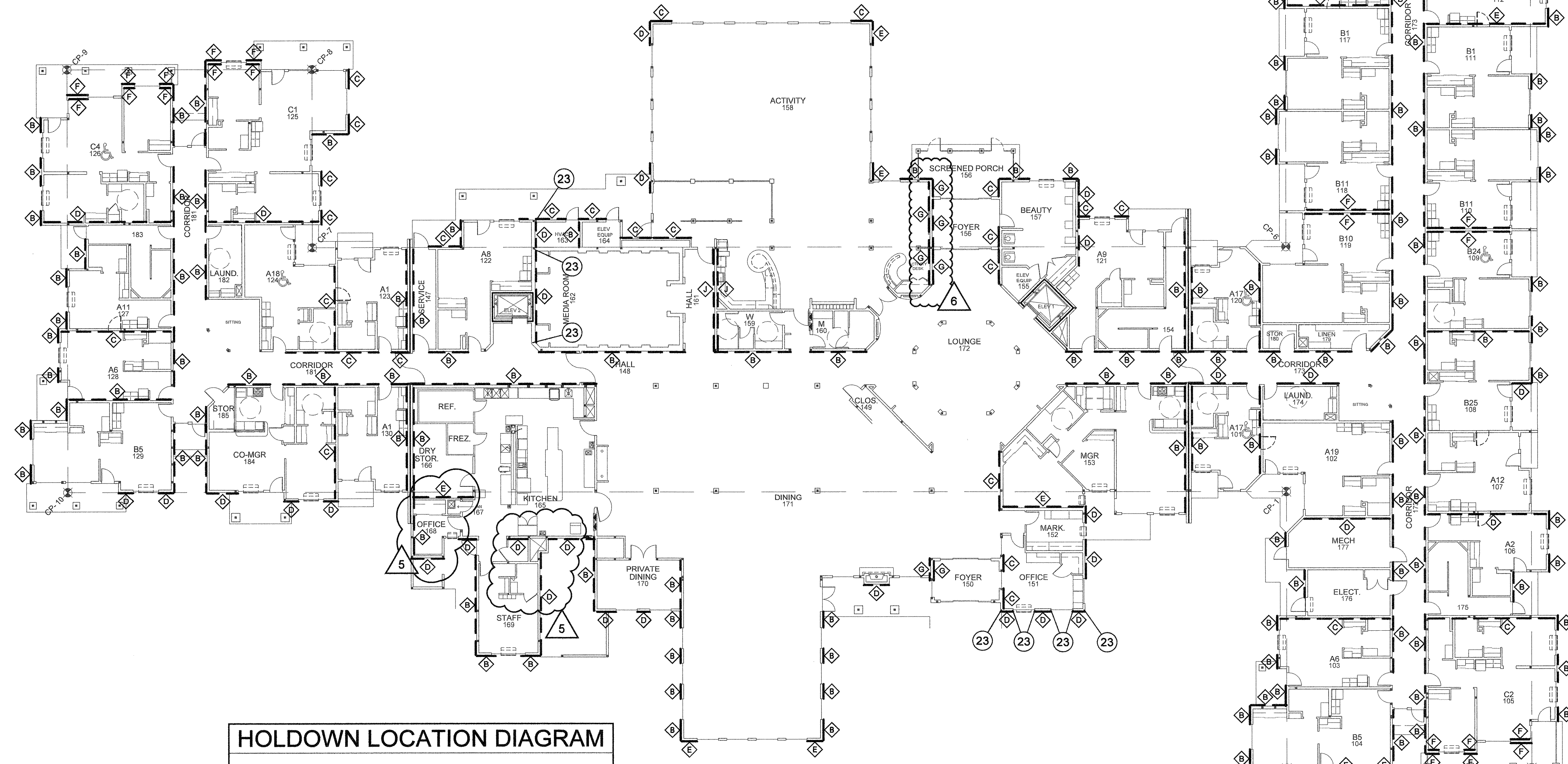
- 1 SIMPSON SSU HANGERS. CONNECT JACK TRUSS TOP AND BOTTOM CHORD, OR RAFTER AND CLG JOISTS (WHERE STICK FRAMING IS USED) TO CARRY TRUSS.
- 2 TYPICAL STAIR CONSTRUCTION: (see architectural details A7.4) MID LANDINGS - 1-3/4x11-7/8 LVL @ 24" oc. HEADERS - (2) 1-3/4x11-7/8. SEE DETAIL 13S2.5 FOR STRINGER SIZE AND SPACING. DETAIL 11/S3.3 FOR ROOF FRAMING & DETAIL 9/S2.4 FOR BEAM SIZE AND LOCATIONS.
- 3 GRADUATED TRUSSES FOR HIP/VALLEY CONSTRUCTION.
- 4 SPACE JOISTS 32" FOR H.V.A.C. SUPPORT FLOOR SHEATHING w/ FLAT 4x12 @ 24" o.c. w/ Z2 CLIPS THIS LOCATION. (TYP.)
- 5 TRUSSES BEAR ON EXTERIOR WALL AND CANTILEVER OVER TOP FLOOR DECKS. SIMPSON H1 EACH TRUSS CANTILEVERED.
- 6 TRUSSES BEAR ON TOP OF WALL, OR COLUMN. SIMPSON H2.5 ANCHOR TIES TRUSS TO FRAMING MEMBER BELOW EACH END OF EACH TRUSS
- 7 SPACE FRAMING MEMBER FOR MECH CHASE, HATCHES AND OPENINGS. SEE DTLS. 2 & 3/S2.5 CONFIRM CLEAR OPENING REQMNTS WITH MECH CONTR.
- 8 2x6 DECK JOISTS @ 16" oc U.O.N. SEE DTL SHEET A7.3 and 10 & 11/S2.3 FOR DECK FRAMING.
- 9 SHEAR WALL NOTES-(PANELS REFER TO DETAIL 2/S2.6)  
 \* SHEAR WALL CONSTRUCTION IN ACCORDANCE WITH REPORT NO NER-272.  
 \* SHEAR WALL PERPENDICULAR TO CORRIDOR CONTINUE THROUGH ATTIC TO UNDER SIDE OF ROOF SHEATHING. USE SAME WALL TYPE AS USED ON THIRD FLOOR. (DETAIL 1/S2.6) OR SHEAR "B" WHICHEVER IS GREATER.
- 10 STICK FRAME OVER ELEVATOR w/ 2x8 RAFTERS @ 16" o.c. ON CRIPPLE WALLS, ON SHIRT AND CORRIDOR.
- 11 GIRDER TOP AND BOTTOM CHORDS TO MATCH STICK FRAMING.
- 12 NOT USED
- 13 FIRE BARRIER WALL SEE DETAIL 15 AND 16 ON S2.9
- 14 DRAG STRUTS - REFER TO STRUC. DETAIL 8/S2.6, DRAG STRUT @ FLOOR.
- 15 DRAG STRUTS - REFER TO STRUC. DETAIL 9/S2.6, DRAG STRUT @ FLOOR.
- 16 DRAG STRUTS - REFER TO STRUC. DETAIL 11/S2.6 DESIGN TRUSS FOR ADDITIONAL 2000# LATERAL LOAD PLACED ON TOP CHORD OF TRUSS. SEE DETAIL 13/S2.6 FOR UPLIFT CONNECTIONS. SEE DETAIL 15/S2.6 FOR WALL CONNECTION.
- 17 DRAG STRUTS - REFER TO STRUC. DETAIL 12/S2.6 DESIGN TRUSS FOR ADDITIONAL 5000# LATERAL LOAD PLACED ON TOP CHORD OF TRUSS. SEE DETAIL 13/S2.6 FOR UPLIFT CONNECTIONS.
- 18 LOCATION OF FUTURE DOOR 12'-4" FROM CORRIDOR SIDE OF WALL HINGE SIDE OR 6" AWAY FROM NEAREST WALL OR KITCHENETTE (PROVIDE DOOR HEADER IN FRAMING SEE DETAIL 10/S3.3).
- 19 SCISSORS TRUSSES TO BARE ON BEAMS. DO NOT HANG TRUSSES FROM BEAM
- 20 (1)-MST72 STRAPS BM TO DBL TOP PLATE/TRUSS OR BEAM TO BEAM
- 21 (2)-MST72 STRAPS BM TO DBL TOP PLATE. W/ (56)-16d NAILS
- 22 MITER BEAMS AT CORNERS OR PROVIDE (2) SIMPSON HGA10 ANGLES TOP AND BOTTOM. (AT ELEVATOR)
- 23 PROVIDE BLK'G FOR KITCHEN HOOD. COORDINATE W/ KITCHEN EQUIP. SUPPLIER FOR LOCATION OF BLK'G.
- 24 GRADUATE TRUSS OVER-FRAMING @ 24" o.c. W/ SIMPSON VTC2 CLIPS AS REQ'D. OVERFRAMING TRUSSES TO BE PLACED ON ROOF SHTG (PER DETAIL 8/S2.4)

**STRUCTURAL LEGEND:**

111 DETAIL REFERENCE  
 1 STRUCT. NOTE  
 HEAT PUMP UNIT  
 FIRE WALL/FIRE BARRIER HORIZONTAL EXIT  
 WOOD COLUMN DESIGNATION  
 TUBE STEEL COLUMN DESIGNATION  
 C2 COLUMN REF.  
 P1 COLUMN PAD TAG  
 F-1 FOOTING TAG

SHEARWALL ON WALL SHOWN SHEAR PANEL ON DASHED SIDE  
 HOLDOWN REF. SYSTEM REFERENCE (SEE S2.7a & S2.7b) SEE DETAILS 10,17/S2.2 FOR FTG  
 SUBSCRIPTS:  
 WB - STARTS AT WOOD BEAM  
 SB - STARTS AT STEEL BEAM  
 HOLDOWN REFERENCE(SEE 1/S2.4)  
 S = SINGLE CS16x49" LONG STRAP w/ (22) 10d PER STRAP  
 S2 = DBL. CS16x49" LONG STRAP w/ (22) 10d PER STRAP  
 S3 = TRIPLE CS16x49" LONG STRAP w/ (22) 10d PER STRAP  
 S4 = TRIPLE CS14x57" LONG STRAP w/ (30) 10d PER STRAP

2x6 AT 16" O.C. BEARING WALL U.O.  
 2x8 BEARING WALL PER PLAN  
 2x10 AT 24" O.C. BEARING WALL  
 HALF HIGH WALL PER PLAN  
 STRUCT MEMBER (SEE BELOW)  
 R = RAFTERS  
 J = FLOOR JOISTS  
 CJ = CEILING JOISTS  
 FRAMING DIRECTION  
 FRAMING TYPE  
 EXTENT OF FRAMING  
 SINGLE JOIST / TRUSS  
 DBL JOIST / VLY. TRUSS HIP TRUSS / GIRDER TRUSS



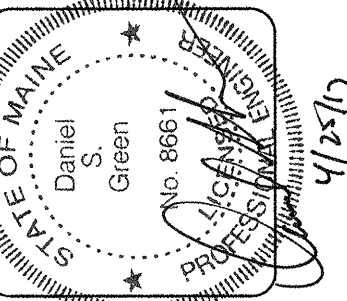
**SHEARWALL SCHEDULE**

SHEARWALL MARK	SHT'G. TYPE & THICKNESS	SHT'G. NAIL INFO.	FLR. TO FLR. CONNECTION	SHEARWALL TO CONC. CONN.	LOAD (KIP)					
						WALL BD.	BOTH SIDES	SEE NOTE	FIELD OC	KEY NOTES
B	7/16"			1/2" DIA. @ 36" or 5/8" DIA. @ 48"	210					
C	7/16"			1/2" DIA. @ 24" or 5/8" DIA. @ 36"	320					
D	7/16"			1/2" DIA. @ 10" or 5/8" DIA. @ 16"	415					
E	7/16"			1/2" DIA. @ 8" or 5/8" DIA. @ 12"	535					
F	7/16"	YES		1/2" DIA. @ 12" or 5/8" DIA. @ 18"	640					
G	7/16"	YES		1/2" DIA. @ 10" or 5/8" DIA. @ 15"	830					
H	7/16"	YES		1/2" DIA. @ 8" or 5/8" DIA. @ 10"	1100					
J	10/16"	YES		1/2" DIA. @ 6" or 5/8" DIA. @ 8"	1460					

- KEY NOTES:**
- 3x STUDS AT ADJOINING PLYWD PANEL EDGES.
  - 3x STUDS AND SILL PLATES. STAGGER PLYWD PANEL EDGES.
  - 3x DF.L STUDS AND SILL PLATES. STAGGER PLYWD PANEL EDGES.
  - 5/8" GYPSUM SHEATHING TO BE SECURED WITH 6d COOLER NAILS OR #6-1" TYPE "W" OR "S" SCREWS DIRECTLY TO STUDS.
  - PLYWD PANEL EDGES ARE TO BE STAGGERED TO FALL ON DIFFERENT FRAMING MEMBERS.
  - NAILS ARE TO BE COMMON or HOT DIPPED GALVANIZED U.O.N.
  - 3x SILL PLATES REQUIRED AT FOUNDATION ONLY.
- SHEAR PANEL NOTES**
- \* SHEAR VALUES ARE ADJUSTED FOR SPRUCE-PINE-FIR STUDS @ 16" oc U.O.N.
  - \* ALL APA SHEATHING SHEARWALLS TO BE BACKED WITH 2" NOMINAL OR WIDER FRAMING.
  - \* WHEN APA RATED PANELS ARE INSTALLED TO BOTH SIDES OF WALL, PANEL JOINTS OFFSET TO FALL ON DIFFERENT FRAMING MEMBERS.
  - \* NAILING NOT TO PENETRATE THE OUTER VENEER LAYER.
  - \* WHEN USING A NAIL GUN, CONTRACTOR SHALL ENSURE THAT GUN IS SET TO INSTALL NAIL SLIGHTLY PROUD OF SURFACE BEING NAILED. NAIL SHALL THEN BE SET BY HAMMER. DO NOT ALLOW NAIL TO OVER PENETRATE WOOD SURFACE ESPECIALLY ON SHEARWALLS.
  - \* ALL EDGES ON APA RATED PANELS TO BE BLOCKED TO MAINTAIN STRENGTH.
  - \* ALL PANELS LISTED MAY NOT BE USED ON ALL PROJECTS. REFER TO THE SHEARWALL LAYOUT PLANS FOR SIZE, TYPE AND LOCATION OF PANELS.
  - \* GYPSUM WALLBOARD LOAD IS REDUCED IN HIGH SEISMIC LOCATIONS.
  - \* SEE DETAIL #14/S2.5 FOR STAPLES TO NAIL EQUIVALENT TABLE.
  - \* 7/16 OSB (PS2-42 GRADE) MAY BE USED IF APPLIED DIRECTLY TO FRAMING WHEN STUDS ARE SPACED A MAXIMUM OF 16" o.c. OR PANELS ARE APPLIED WITH LONG DIMENSION ACROSS STUDS. 15/32 OSB SHALL BE USED WHEN STUDS ARE SPACED A MAXIMUM OF 24" o.c.
  - \* USE EITHER 16d NAILS OR LTP4' CLIPS WHEN SHTG IS ATTACHED TO LOWER TOP PLATE.
  - \* ALL ANCHOR BOLTS AT SHEARWALLS TO HAVE A 3x3x1/4 THICK PLATE WASHER.

SEE S1.1 - S1.3 FOR ADDITIONAL FOUNDATION LOCATION AND INFORMATION. SEE S1.4 - S1.6 FOR ADDITIONAL FRAMING MEMBERS LOCATION AND INFORMATION.

SEE DETAIL 1 AND 3 ON S2.3 FOR ALLOWABLE BORING / NOTCHING OF MEMBERS.



**lenity architecture**

3750 Kenton Court, SE, Salem, Oregon 97302  
 P 503 399 1690 F 503 399 6365

**COLSON AND COLSON**  
 GENERAL CONTRACTOR, INC.  
 2260 MCGILCHRIST STREET, SUITE 200  
 SALEM, OREGON 97302  
 PHONE (503) 566-7401

**PORTLAND**  
 RETIREMENT RESIDENCE  
 802 OCEAN AVE. PORTLAND, MAINE 04103

**1ST FLOOR SHEARWALL PLAN**

DATE: 8/28/2015  
 REVISED DATE:  
 SHEET: S0.2