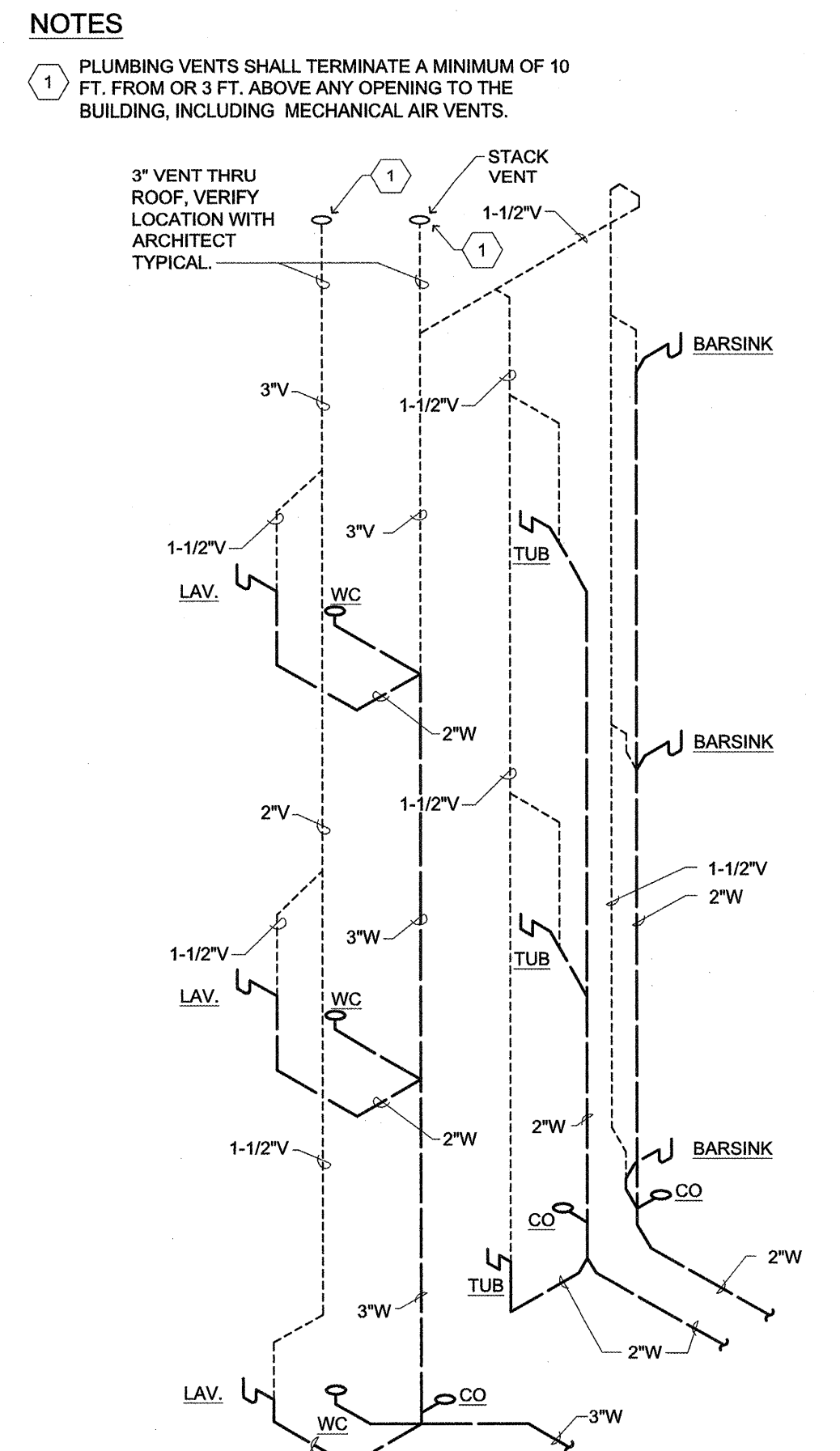
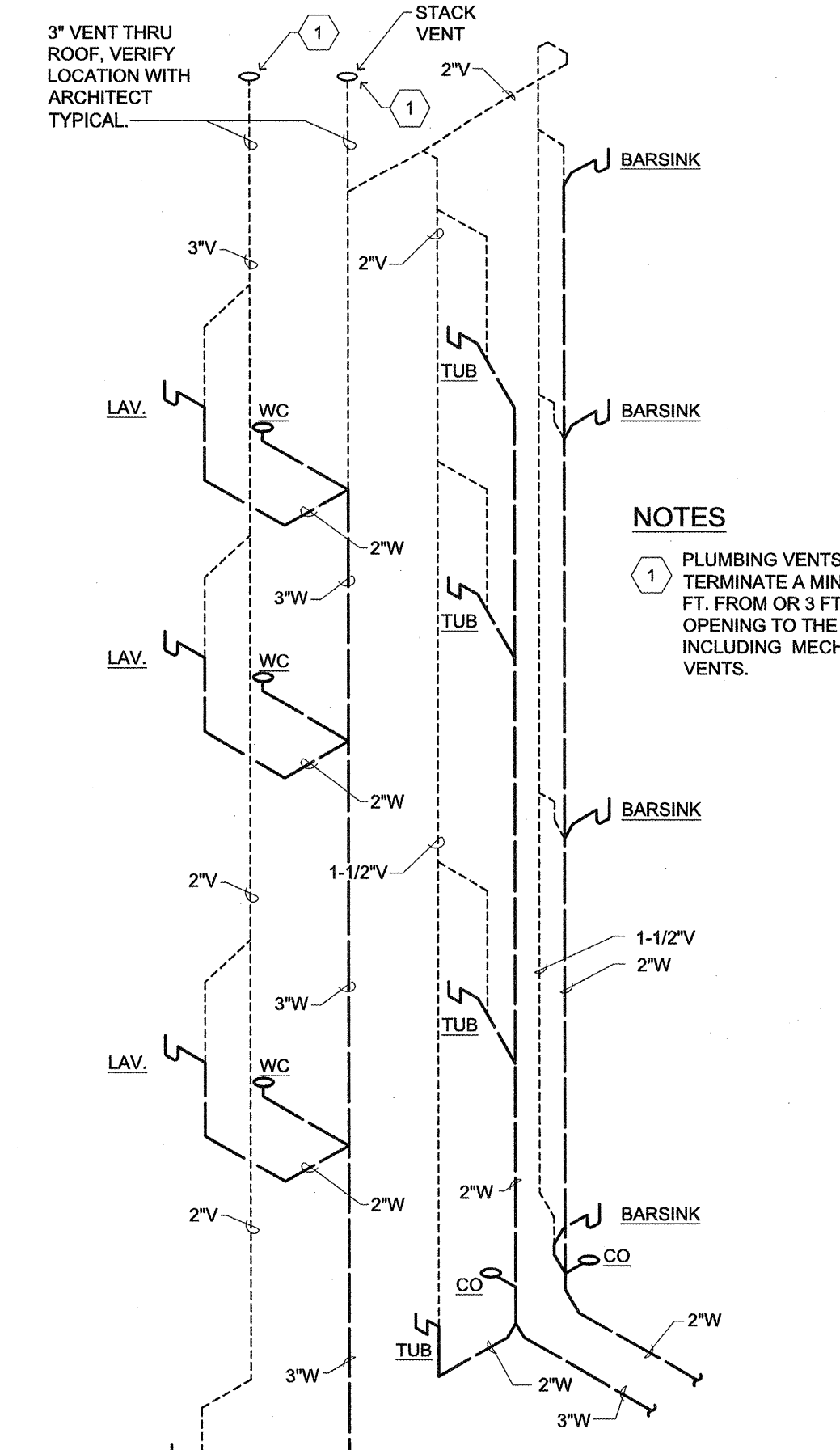


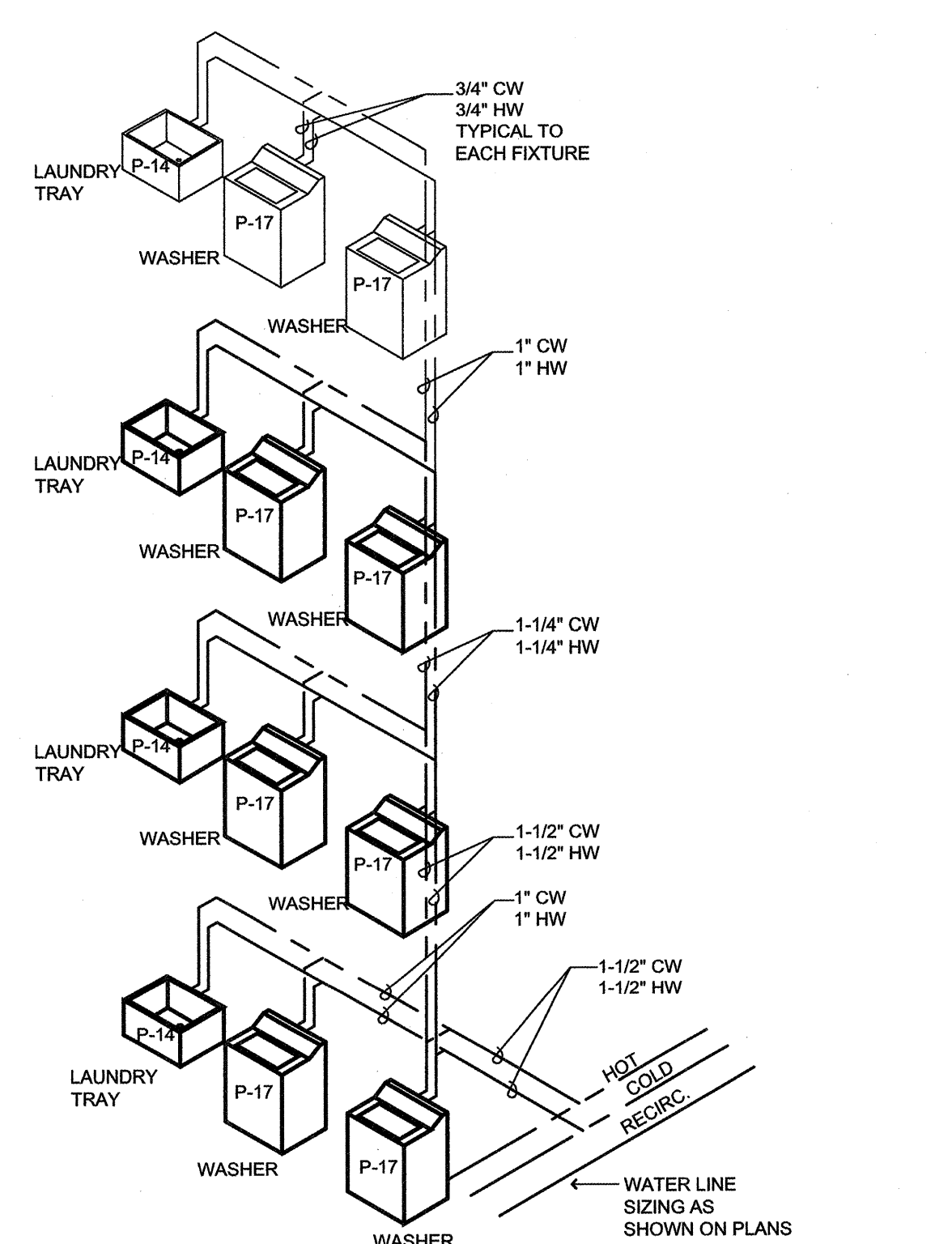
**9 LAUNDRY DRAIN AND VENT RISER (SCHEMATIC)**  
SCALE: N.T.S.



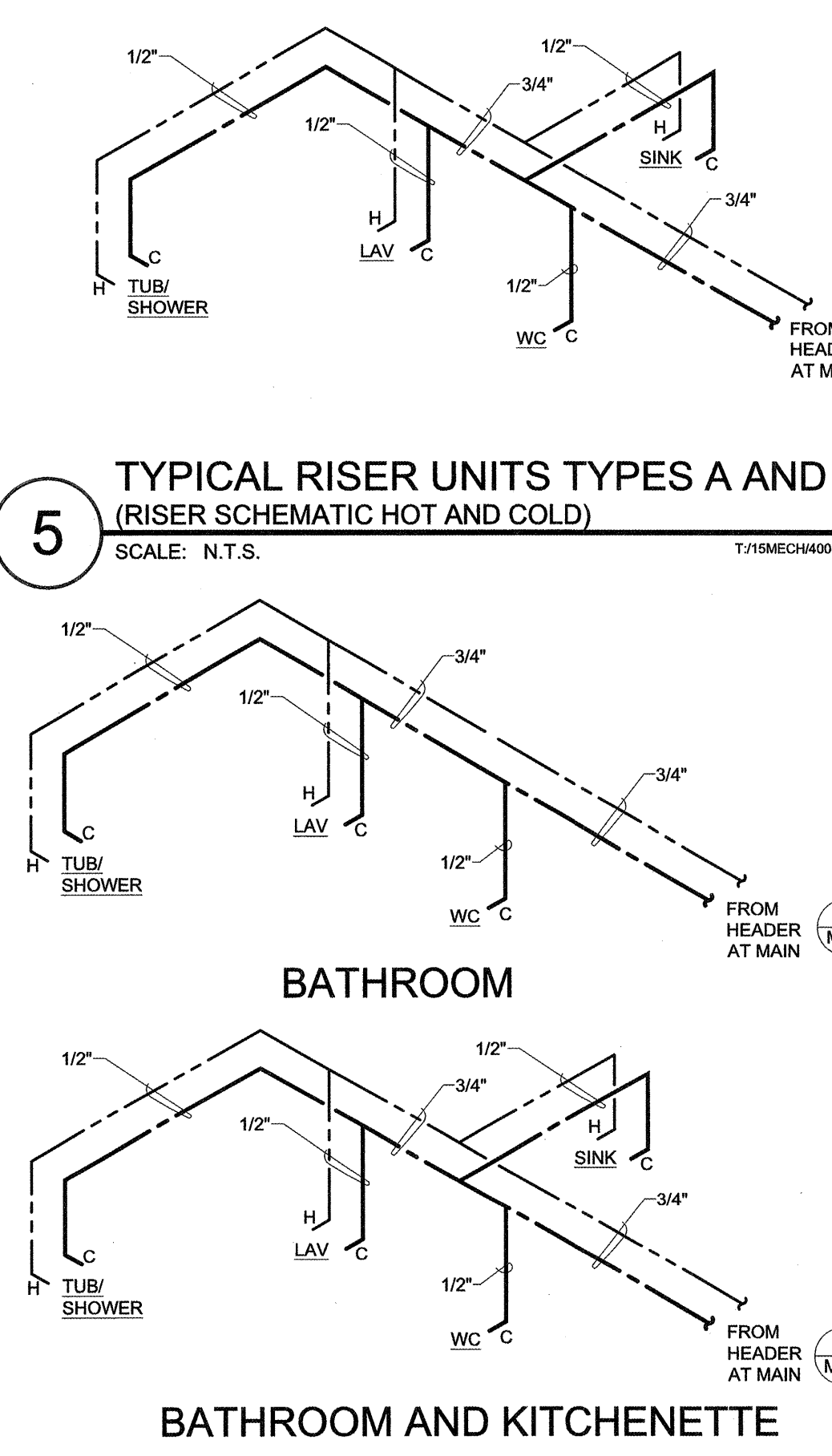
**6 WASTE DETAIL (RISER SCHEMATIC 3-STORY)**  
SCALE: N.T.S.



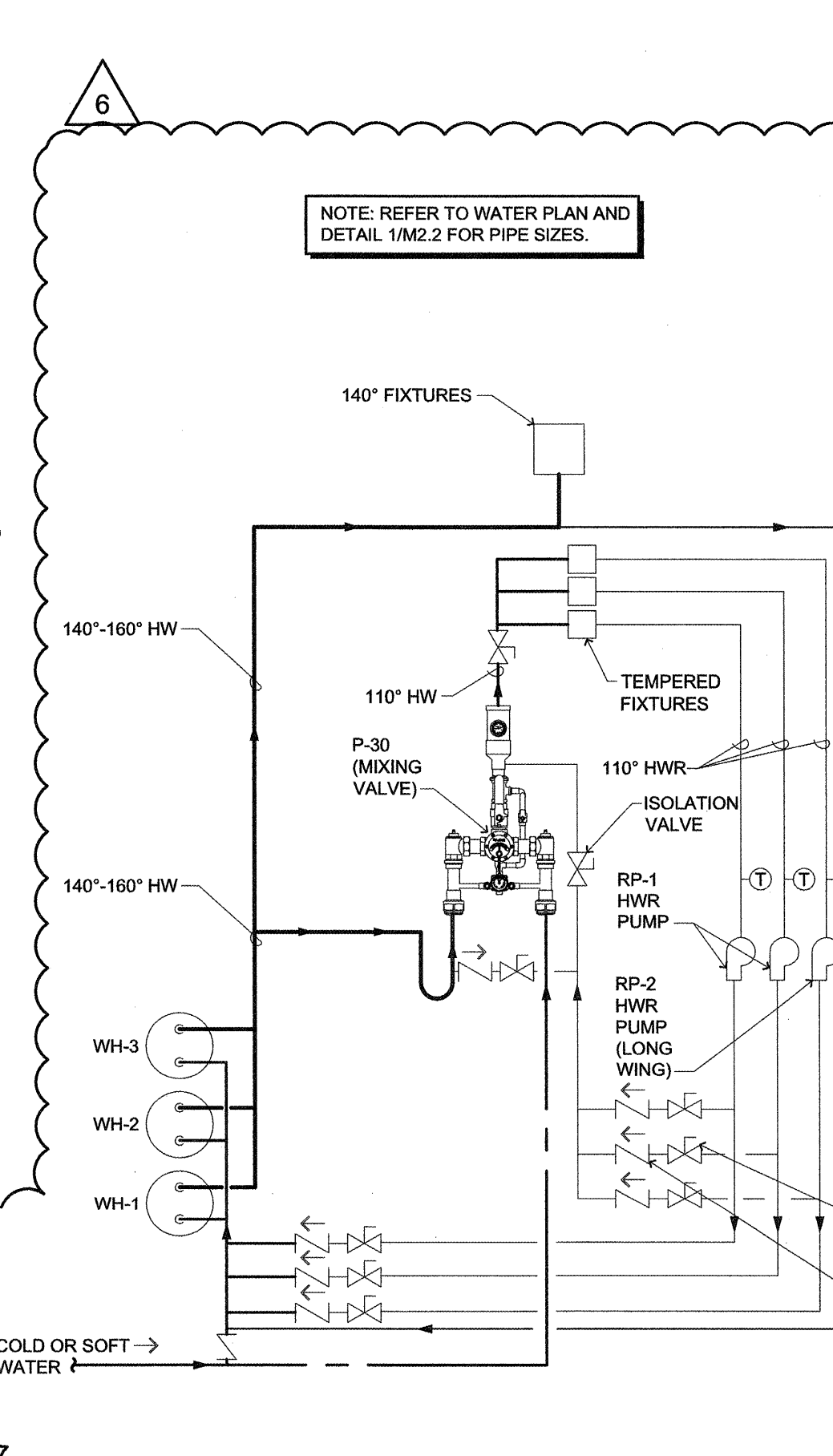
**3 WASTE DETAIL (RISER SCHEMATIC 4-STORY)**  
SCALE: N.T.S.



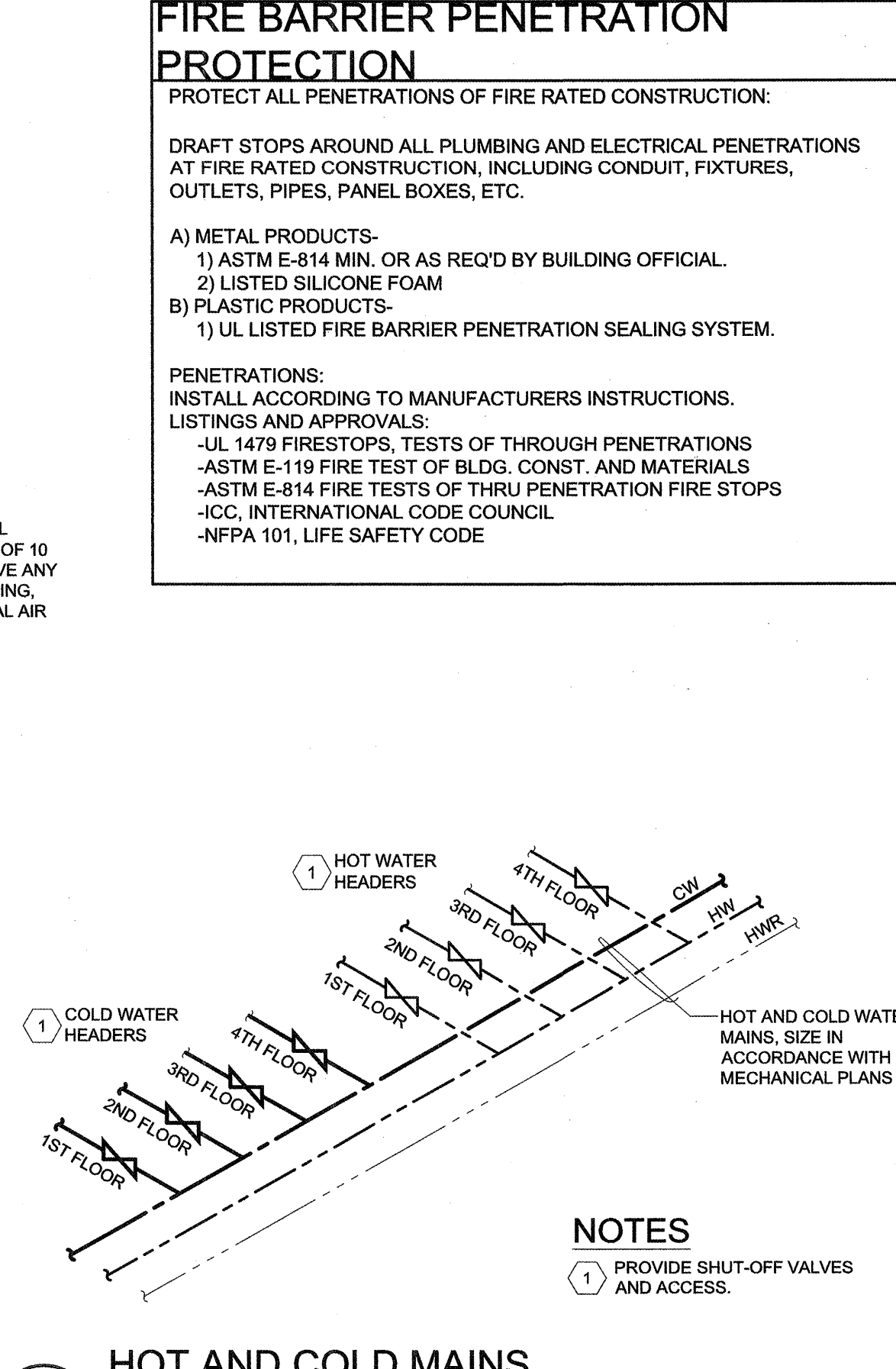
**8 WATER SERVICE (RES. LAUNDRY RM.)**  
SCALE: N.T.S.



**5 TYPICAL RISER UNITS TYPES A AND B (RISER SCHEMATIC HOT AND COLD)**  
SCALE: N.T.S.



**4 TYPICAL RISER UNIT TYPE C (RISER SCHEMATIC HOT AND COLD)**  
SCALE: N.T.S.



**2 WATER HEATER MIXING VALVE (PIPING SCHEMATIC)**  
SCALE: N.T.S.

**FIXTURE LOAD SCHEDULE**  
Portland, ME. Fixture unit count

Based on UPC 2009

BATHROOM GROUP	RETIREMENT FIXTURE LOAD SCHEDULE			TOTAL		
	QTY	SAN. FU	HW FU	QTY	HW FU	HW FU
BATHROOM CLOSET	151	5	755	151	5	755
WATER CLOSET	6	5	30	6	5	30
LAVATORY	8	2	16	8	2	16
SINK STD	133	2	266	133	2	266
SINK HEAVY	3	2	6	3	2	6
SERV. SINK	6	2	12	6	2	12
SHOWERBATH	0	2	0	0	2	0
CLO WASHERS	18	3	54	18	3	54
HOSE BIBB	11	5	55	11	5	55
FOUNTAIN	2	0.5	1	2	0.5	1
FLOOR DRAIN	16	2	32	16	2	32
BEAUTY SINKS	2	2	4	2	2	4
LAUN. SINK	9	2	18	9	2	18
TOTAL	363	22	1186	363	22	1186

**KITCHEN**

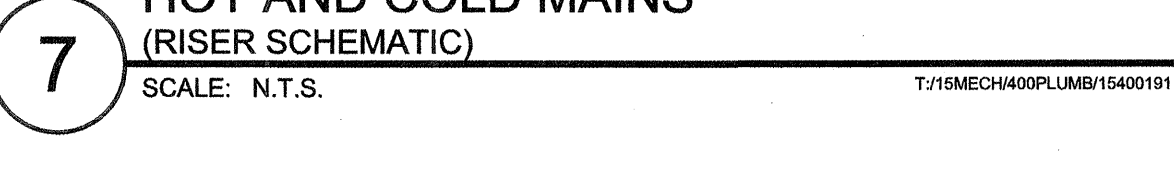
FLOOR SINK	6	3	18	6	3	18
SINK	4	3	12	4	3	12
H&C FAUCET	3	3	12	3	3	12
C ONLY FAUCET	4	4	16	4	4	16
C ONLY FAUCET/3/4	1	1	4	1	1	4
H ONLY FAUCET	2	2	8	2	2	8
DISWASHER	1	1	4	1	1	4
TOTAL	22	30	88	22	30	88

**SYMBOLS LEGEND**

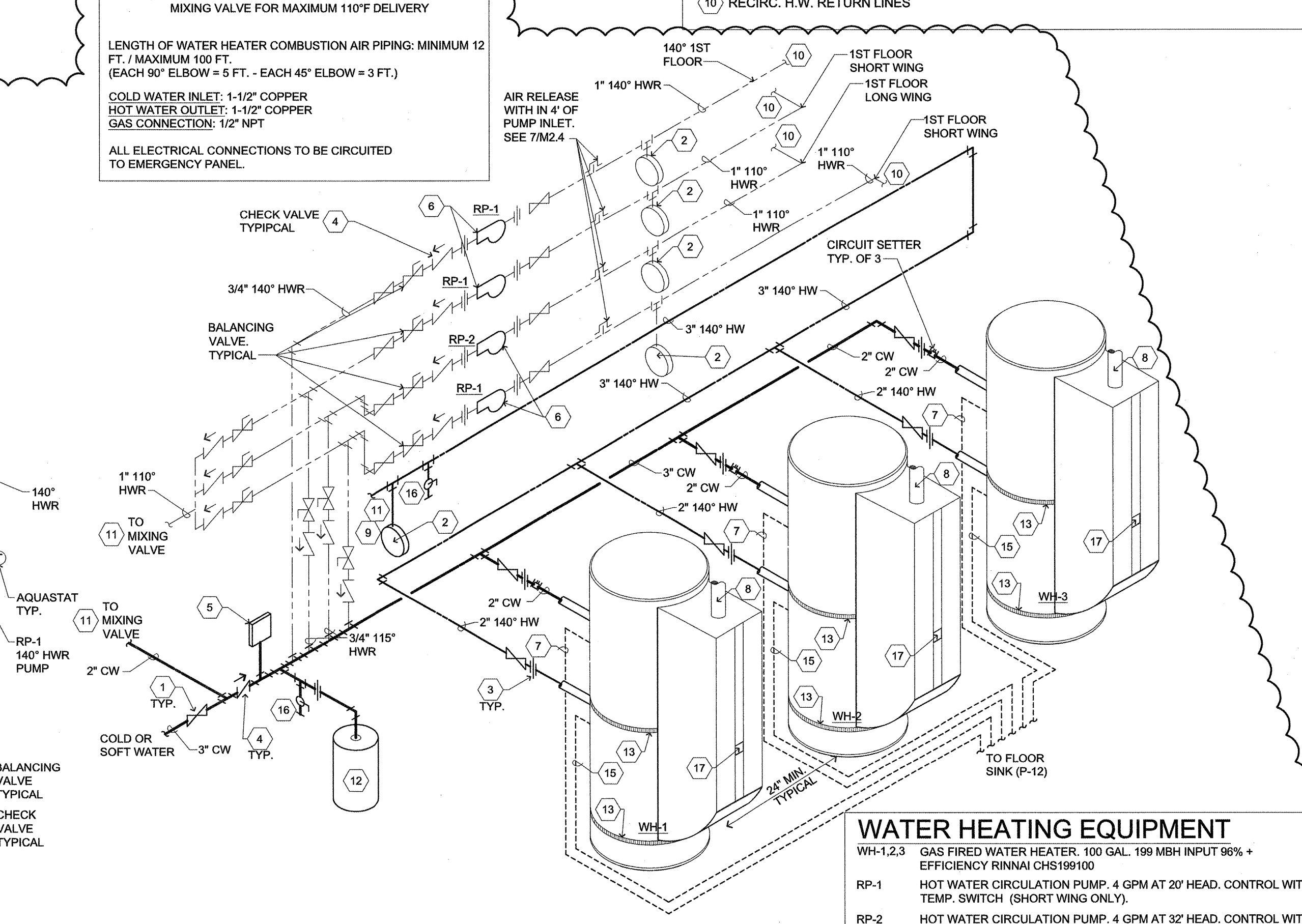
	HW RECIRCULATING PUMP		TEMPERATURE GAUGE
	PIPE UNION		VACUUM BREAKER
	BALANCING VALVE		CHECK VALVE
	GAS PRESSURE REGULATOR		TEMPERATURE / PRESS RELIEF VALVE
	GATE OR BALL VALVE		P-X FIXTURE WITH TRAP
	AGA APPROVED FULL FLOW BALL VALVE, LINE SIZE		CIRCUIT SETTER VALVE

**KEY NOTES WATER HEATER**

- BALL VALVE, LINE SIZE
- SEE DETAIL 2/M2.2 FOR MIXING VALVE.
- THERMOMETER
- EXPANSION TANK - AMTROL ST-42V-ASME 17.5 GAL., 16-1/2" DIAMETER, 24-1/4" HIGH.
- UNIONS - TYPICAL
- PROVIDE EARTHQUAKE STRAPPING FOR WATER HEATERS AT TOP 1/3 OF TANK AND AT BOTTOM 1/3 OF TANK, OR PER LOCAL CODE.
- CHECK VALVE
- VACUUM BREAKER - (IF REQ'D BY LOCAL CODE)
- 3" COMBUSTION AIR. SEE DETAIL 11/M4.0.
- RECIRC. PUMPS
- 1/2" CONDENSATE DRAIN CONNECTION TO FLOOR DRAIN.
- TEMP/PRESS RELIEF VALVE, DRAIN TO FLOOR DRAIN, TYP.
- 3/4" HOSE BIBB CONNECTION FOR DRAINAGE
- HOT WATER SUPPLY 140° MAX.
- 17 WATER HEATER CONTROL PANEL
- RECIRC. H.W. RETURN LINES



**7 HOT AND COLD MAINS (RISER SCHEMATIC)**  
SCALE: N.T.S.



**1 PLUMBING DETAIL (WATER HEATER, VENT MANIFOLD PIPING SCHEMATIC)**  
SCALE: N.T.S.

**WATER HEATING EQUIPMENT**

WH-1,2,3 GAS FIRED WATER HEATER, 100 GAL. 199 MBH INPUT 96% + EFFICIENCY RINNAI CHS199100

RP-1 HOT WATER CIRCULATION PUMP, 4 GPM AT 20' HEAD, CONTROL WITH TEMP. SWITCH (SHORT WING ONLY).

RP-2 HOT WATER CIRCULATION PUMP, 4 GPM AT 32' HEAD, CONTROL WITH TEMP. SWITCH, (CORE & WING).

RP-1, 2 TACO

NOTE: PENETRATIONS OF AREA SEPERATION WALLS SHALL BE PROTECTED WITH THROUGH-PENETRATION FIRE STOPS AND MEMBRANE PENETRATION FIRE STOPS

**lenity architecture**  
3650 Kells Court SE, Salem, Oregon 97302  
P: 503.399.0050 F: 503.399.0585 W: lenityarchitecture.com

**COLSON AND COLSON GENERAL CONTRACTOR, INC.**  
2280 MCGILCHRIST STREET SE, SUITE 200 SALEM, OREGON, 97302  
PHONE (503) 586-7401

**PORTLAND RESIDENCE**  
802 OCEAN AVE. PORTLAND, MAINE 04103

**PLUMBING DETAILS AND SCHEDULES**

DATE: 8/28/2015  
REVISED DATE: 9/22/2015  
2/2/2016

**SHEET M2.2**

PLUMBING