

**lenity**  
architecture  
1850 N. Main Street, Suite 200  
Salem, Oregon 97302  
P: 503.399.1050 F: 503.399.6585  
www.lenityarchitecture.com

**COLSON AND COLSON**  
GENERAL CONTRACTOR, INC.  
2280 MCGILCHRIST STREET SE, SUITE 200  
SALEM, OREGON 97302  
PHONE (503) 596-7401

**PORTLAND**  
**RETIREMENT RESIDENCE**  
802 OCEAN AVE. PORTLAND, MAINE 04103

**FIRST FLOOR**  
**WASTE PIPING**

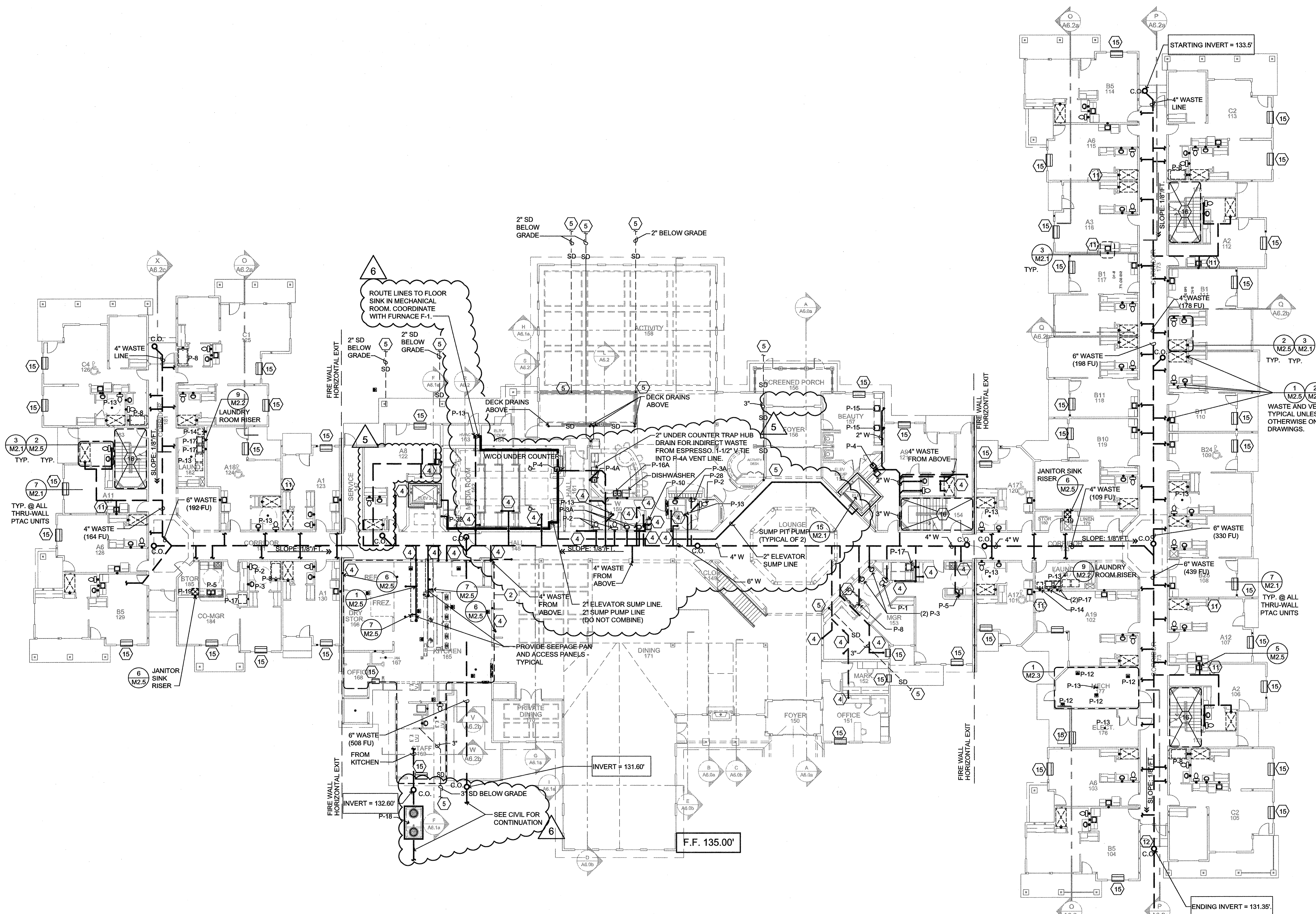
DATE: 8/28/2015  
REVISED DATE: 9/22/2015, 2/2/2016  
SHEET: M1.1  
PLUMBING

SEE SHEET M2.5 FOR WASTE RISERS AND DOMESTIC RISER UP IN WALL. SEE SHEET M2.2 FOR INDIVIDUAL DOMESTIC ROUTING IN EACH ROOM.

NOTE: REFER TO SHEETS M2.1 AND A7.7 FOR FIRE RATING OF PLUMBING PENETRATIONS.

ALL HORIZONTAL WASTE PIPING SHALL BE RUN AT A SLOPE OF 1/8" PER FT. UNLESS OTHERWISE NOTED. INVERT ELEVATIONS ARE APPROXIMATE. CONTRACTOR TO VERIFY

SEE DETAILS 8/M2.1, 9/M2.1, AND 9/M4.0 FOR ALLOWABLE BORING / NOTCHING OF MEMBERS.



PLUMBING LEGEND	
	COLD WATER PIPING
	120°F DOMESTIC HOT WATER PIPING
	120°F DOMESTIC HOT WATER RECIRC. PIPING
	140°F DOMESTIC HOT WATER PIPING
	140°F DOMESTIC HOT WATER RECIRC. PIPING
	STORM DRAIN ABOVE GRADE
	STORM DRAIN BELOW GRADE
	VENT PIPING
	GREASE LINE PIPING
	NATURAL GAS PIPING
	PIPING BELOW GRADE
	UNION: GATE OR BALL VALVE: CHECK VALVE
	PRESSURE REGULATING VALVE
	BALANCING VALVE
	ROOF DRAIN
	OVERFLOW DRAIN
	SANITARY SEWER BELOW SLAB/GRADE
	SANITARY SEWER ABOVE SLAB/GRADE
	CLEANOUTS TO GRADE OR FINISH FLOOR, WITH COVER.
	FLOOR SINK
	FLOOR DRAIN
	PLUMBING CONNECTION
	FIRE DEPARTMENT CONNECTION
	HOSE BIBB WITH INTEGRAL VACUUM BREAKER
	PIPE WITH END CAP, REFER TO NOTE ON DWG.
	ROOF DRAIN
	OVERFLOW DRAIN
	SANITARY SEWER BELOW SLAB/GRADE
	SANITARY SEWER ABOVE SLAB/GRADE
	CLEANOUTS TO GRADE OR FINISH FLOOR, WITH COVER.
	FLOOR SINK
	FLOOR DRAIN
	PLUMBING CONNECTION
	FIRE DEPARTMENT CONNECTION

- PLUMBING KEY NOTES**
- 1 GAS MAIN SEE 1/M2.4
  - 2 SEE M2.3 FOR THIS AREA.
  - 3 TYPICAL RISER, SEE 4/M2.2.
  - 4 ROUTE PIPING TO FIXTURES ON FLOOR ABOVE/BELOW. SEE RISERS DETAIL.
  - 5 CONNECT INTERIOR ROOF DRAIN TO STORM WATER SYSTEM. SEE CIVIL PLANS DISCHARGE 6" ABOVE LOWER ROOF AS SHOWN. MIN. 1/8" PER FT. SLOPE.
  - 6 PROVIDE SHUT-OFF VALVES AND ACCESS. SEE RISER 3/M2.2.
  - 7 ROUTE GAS PIPING UP/DOWN. SEE 1/M2.4
  - 8 HOSE BIBB (P-23) - (FROST FREE)
  - 9 HOSE BIBB (P-23) IN MECH. WELL - (FROST FREE)
  - 10 FUTURE DOOR (DO NOT PLUMB IN THIS LOCATION).
  - 11 CLEAN OUT OR MANHOLE AS REQ'D BY LOCAL CODE.
  - 12 PROVIDE CONDENSATE LINE FOR FUTURE THRU-WALL PTAC UNITS IN "C" UNIT SPARE BEDROOMS.
  - 13 ROUTE WATER MAINS OVERHEAD TO MECH. ROOM
  - 14 3/4" CONDENSATE DRAIN. SEE 7/M2.1.
  - 15 NO PLUMBING ROUTED IN STAIR WALL-UTILIZE 2x6 FUR OUT.
  - 16 3" ROOF DRAIN, UNLESS NOTED OTHERWISE ON DRAWING.
  - 17 SLEEVE WASTE PIPING THROUGH FOUNDATION.
  - 18 PROVIDE 3/4" CONDENSATE DRAIN FOR FUTURE PTAC. SEE 7/M2.1.
  - 19

**FIXTURE SYMBOLS:**

	ROLL-IN SHOWER		ACCESSIBLE SUITE SYMBOL
	TUB		

NOTE: IF SYMBOL ON A-5 UNIT PLANS DIFFER FROM WHAT IS LABELED CONTACT ARCH. FOR CLARIFICATION.

**TYPICAL A,B,C UNIT FIXTURES U.O.N.:**

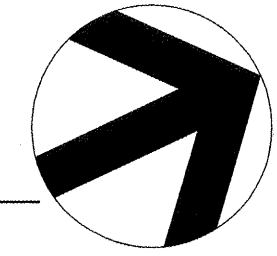
- P-1 WATER CLOSET
- P-3 LAVATORY SINK
- P-4 KITCHENETTE SINK
- P-6 SHOWER

**TYPICAL ADA UNIT FIXTURES U.O.N.:**

- P-1 WATER CLOSET
- P-3 LAVATORY SINK
- P-4b KITCHENETTE SINK
- P-7 SHOWER
- P-13 FLOOR DRAIN

\*ALL C UNITS TO HAVE A P-7 AND P-8 REFER TO UNIT PLANS FOR LOCATIONS.

**FIRST FLOOR - WASTE PIPING**  
SCALE: 1/16" = 1'-0"



8/28/2015 2:50 PM p:\projects\104640017\200\999\plumbing\first floor\waste piping\m1.1.dwg  
 User: rhhazzard  
 Plot: 8/28/2015 2:50 PM  
 Scale: 1/16" = 1'-0"  
 Sheet: M1.1